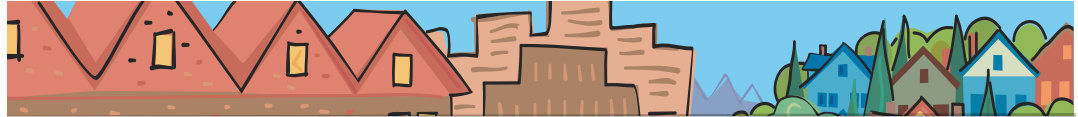


Rod Park

METRO COUNCIL DISTRICT 1 NEWS



METRO

PEOPLE PLACES
OPEN SPACES

Rod Park represents District 1, which includes Fairview, Gresham, Happy Valley, Maywood Park, Troutdale, Wood Village, Damascus and portions of East Portland.



A message from Rod Park

Last week several Metro Councilors and staff took a field trip to the Columbia Ridge Landfill in Arlington, Oregon and witnessed where the Metro region residents' trash is dumped. Seeing the number of containers coming through this facility and the holes being dug to bury our waste reminded me how important it is for the Metro region to increase our recycling rate. Despite the fact that our rate is one of the highest in the country at 59 percent, we can do better. In fact, we send 1.2 million tons of trash all the way to eastern Oregon to be buried. That is a lot of trash!

I recently attended a kick-off event for our new public education campaign, "Together Our Efforts Won't Go to Waste," which is described in this newsletter. Parked in Pioneer Courthouse Square was a flatbed truck full of the "20-ton reminder" of baled recyclables that have to be landfilled every day due to contamination. I was surprised at how much recyclable material is sent to the landfill due to confusion about recycling procedures. Keep your eye out for commercials and brochures coming your way, which will lay out the most effective ways to recycle!

—Rod Park

A New Look at Regional Choices

Our region is admired the world over for its approach to planning for the future. A decade ago, we adopted a groundbreaking plan, the 2040 Growth Concept Plan, to define what we want to be.

But now, with our region expecting to grow by about a million more people in the next 25 years, we need to create stronger investment strategies that will actually fulfill the vision and make it a reality. To do this, the Metro Council launched its "New Look at Regional Choices" project, to find ways to implement our long-range vision.

On June 23, the Metro Council hosted a New Look Regional Forum to introduce the project to nearly 300 citizens, elected officials, business leaders, planners, and environmental advocates. In order to understand the impact of one million more people, attendees were reminded of the many changes in the region during the

last time the region grew by that much—between 1968 and 2006: I-5 was new and never filled to capacity, TriMet did not exist, the suburbs were much smaller and large farms separated outlying cities.

Participants were then challenged to make hard choices about building a great region that lives up to the vision. Look for results of that work in future newsletters.

Unwind at Twilight Tuesdays

Summer offers a variety of outdoor activities for residents of our region, and one of them is watching other residents—meaning our abundant wildlife. Twilight Tuesdays at Smith and Bybee Wetlands Natural Area with Metro Naturalist James Davis offer a relaxing walk, a way to unwind after work, and the opportunity to easily view animals native to our region.

Dusk is one of the best times to see wildlife, and is about the only time you can see most

continued

Twilight Tuesdays

continued from page 1

mammals such as beaver, muskrat, otter, raccoon, deer, and bats. Birds also are more active than during the hot days.

Take advantage of the long summer days and join one of the walks, which take place from 7 to 9:30 p.m. August 8 and 22. All ages are welcome, but participants must be able to be quiet, sneaky, and patient. Bring your binoculars or borrow a pair of ours. Payment of \$5 per adult is required in advance; children are free. Call (503) 797-1715 to register and for more information.

Together our efforts won't go to waste

Metro area residents do a remarkable job of recycling—our recovery rate of 59 percent is one of the highest in the country. The Metro Council's goal of 64 percent by 2009 is attainable, but to help, Metro has recently launched a new public education campaign to remind residents about proper recycling guidelines.

Called "Together Our Efforts Won't Go to Waste," the campaign's message focuses on two frequent practices that render large amounts of otherwise recyclable material useless. These are mixing glass in with other recyclables and placing plastic bags in with curbside plastic recycling.

"Many people assume that the recycling process is the same for all items," said Metro Council President David Bragdon. "We want residents to understand that the recycling process is different for different materials, and that is especially true for glass and plastic."

Plastic bags must be kept out of the recycling bin, as the material from which they are made causes serious problems in the machinery at recycling facilities, resulting in costly equipment repairs and delays. Additionally, glass must be set out in separate rigid containers so it doesn't break and contaminate other reclaimed materials, especially paper.

Bragdon notes that because of these improper recycling procedures, 20 tons of otherwise recyclable materials are going

to the landfill every day. "We know that all diligent recyclers in the region will appreciate learning how to make sure that their efforts don't go to waste," he said.

Events of note in District 1

9 a.m. Saturday, Aug. 12

Powell Butte trail maintenance

Help repair the trails at Powell Butte Nature Park from winter storm damage. Bring water and gloves. Meet at the parking lot at the top of the hill on Southeast 162nd Avenue south of Powell Boulevard. To register, call (503) 823-6131.

Campfire programs at Oxbow Regional Park

Campfire programs are held in the outdoor forest amphitheater across from the campground, but you do not have to camp to enjoy them. Program is free with a \$4 per vehicle entry fee to the park. Park in the designated area near the boat ramp. No registration required. For more information, call Metro at (503) 797-1850.

8:30 p.m. Friday, Aug. 4

Tall Tales and Bluegrass

8:30 p.m. Saturday, Aug. 5

Animal tracks and traces

8 p.m. Friday, Aug. 11

Old-time music with Dave and Will

8 p.m. Saturday, Aug. 12

Yvonne's gumbo of stories

8 p.m. Friday, Aug. 18

Campfire songs and sing-along

8 p.m. Saturday, Aug. 19

The amazing night life of bats

8 p.m. Friday, Aug. 25

Jen and Wendy's eclectic tunes

8:30 p.m. Saturday, Aug. 26

Shadow puppets

Councilor Rod Park contact information

Address 600 NE Grand Ave.
Portland, OR 97232
Phone (503) 797-1547
Fax (503) 797-1793
E-Mail parkr@metro.dst.or.us

Assistant Kathryn Sofich
Phone (503) 797-1941
E-Mail sofichk@metro.dst.or.us

Web www.metro-region.org

About Metro

Clean air and clean water do not stop at city limits or county lines. Neither does the need for jobs, a thriving economy and good transportation choices for people and businesses in our region. Voters have asked Metro to help with the challenges that cross those lines and affect the 25 cities and three counties in the Portland metropolitan area.

A regional approach simply makes sense when it comes to protecting open space, caring for parks, planning for the best use of land, managing garbage disposal and increasing recycling. Metro oversees world-class facilities such as the Oregon Zoo, which contributes to conservation and education, and the Oregon Convention Center, which benefits the region's economy.

Your Metro representatives

Metro Council President
David Bragdon

Metro Councilors
Rod Park, District 1
Brian Newman, District 2
Carl Hosticka, District 3
Susan McLain, District 4
Rex Burkholder, District 5
Robert Liberty, District 6

Auditor
Alexis Dow, CPA

August 2006 dch/final
Printed on recycled paper