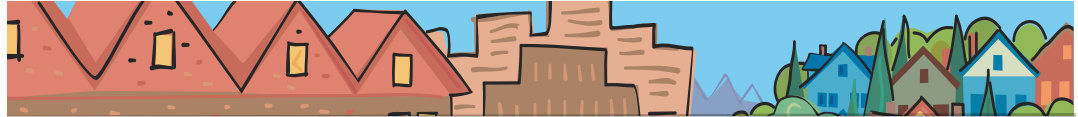


Brian Newman

METRO COUNCIL DISTRICT 2 NEWS



METRO

PEOPLE PLACES
OPEN SPACES

Brian Newman
represents District
2, which includes a
portion of Southwest
Portland and much
of urban Clackamas
County including
Gladstone, Johnson
City, Lake Oswego,
Milwaukie, Oak
Grove, Oregon City,
Rivergrove and
West Linn.



A Message from Brian Newman

Would you like to be more directly involved with Metro? If so, I invite you to apply to be a member of the Metro Committee for Citizen Involvement (MCCI). Two seats are currently vacant for citizens of Metro District 2.

MCCI was established in 1992 to assist with the development, implementation and evaluation of Metro's citizen involvement program and to advise Metro on how best to involve residents in regional planning activities. MCCI members have given input to staff and Council on outreach plans for various Metro initiatives including the Regional Transportation Plan update and the Waste Reduction Plan. As an MCCI member you will learn about many aspects of regional government including how jurisdictions work with each other, outside groups and citizens to make our region a better place to live.

MCCI meetings are open to the public, and you are welcome to attend a meeting before deciding whether you'd like to join. The next meeting is August 2nd, 6 - 8 p.m. in room 270 at the Metro Regional Center. To learn more or to apply, please contact Cheryl Grant at (503) 797-1536 or grantc@metro.dst.or.us.

—*Brian Newman*

Eastside Streetcar extension advances for further study

On July 20, after public testimony, discussion and deliberations, the Metro Council approved a Locally Preferred Alternative for the Eastside Transit Alternatives Analysis. The alternative would extend the Portland Streetcar from NW 10th Avenue and Lovejoy Street in the Pearl District, across the Broadway Bridge and south along the Martin Luther King Jr. Blvd./Grand Avenue couplet. The first construction phase would go to NE Oregon Street, at the Oregon Convention Center. The preference is to ultimately create a loop back across the Willamette River to the Westside near RiverPlace.

The Council was careful to add a workplan consideration requiring that the costs of the proposed Eastside Streetcar not inhibit or endanger the Portland to Milwaukie Light Rail project. Other considerations related to coordinating with ongoing planning

efforts, user benefit measures, capital costs, funding sources, operating revenue sources, traffic and streetcar operations, alignment refinement, and emergency shared light rail and streetcar operations.

The Lloyd District and Central Eastside expressed strong support for the selected alternative, with others from the general public favoring it as well. Community members look forward to a new transit option and the bike and pedestrian improvements that are expected to accompany it.

The Metro Council approval follows a unanimous recommendation by the community-based Project Advisory Committee and unanimous approval from the other project partners: Portland Streetcar Board of Directors, TriMet, Multnomah County and the Portland City Council. In addition, the City of Portland Planning Commission and Portland Development Commission offered support for the project.

continued

Eastside Streetcar

continued from page 1

The next steps in this process include an environmental review and development of a funding strategy. For more information, send e-mail to trans@metro.dst.or.us or call (503) 797-1756.

Unwind at Twilight Tuesdays

Summer offers a variety of outdoor activities for residents of our region, and one of them is watching other residents—meaning our abundant wildlife. Twilight Tuesdays at Smith and Bybee Wetlands Natural Area with Metro Naturalist James Davis offer a relaxing walk, a way to unwind after work, and the opportunity to easily view animals native to our region.

Dusk is one of the best times to see wildlife, and is about the only time you can see most mammals such as beaver, muskrat, otter, raccoon, deer, and bats. Birds also are more active than during the hot days.

Take advantage of the long summer days and join one of the walks, which take place from 7 to 9:30 p.m. August 8 and 22. All ages are welcome, but participants must be able to be quiet, sneaky, and patient. Bring your binoculars or borrow a pair of ours. Payment of \$5 per adult is required in advance; children are free. Call (503) 797-1715 to register and for more information.

Together our efforts won't go to waste

Metro area residents do a remarkable job of recycling—our recovery rate of 59 percent is one of the highest in the country. The Metro Council's goal of 64 percent by 2009 is attainable, but to help, Metro has recently launched a new public education campaign to remind residents about proper recycling guidelines.

Called "Together Our Efforts Won't Go to Waste," the campaign's message focuses on two frequent practices that render large amounts of otherwise recyclable material useless. These are mixing glass in with other recyclables and placing plastic bags in with curbside plastic recycling.

"Many people assume that the recycling process is the same for all items," said Metro Council President David Bragdon. "We want residents to understand that the recycling process is different

for different materials, and that is especially true for glass and plastic."

Plastic bags must be kept out of the recycling bin, as the material from which they are made causes serious problems in the machinery at recycling facilities, resulting in costly equipment repairs and delays. Additionally, glass must be set out in separate rigid containers so it doesn't break and contaminate other reclaimed materials, especially paper.

Bragdon notes that because of these improper recycling procedures, 20 tons of otherwise recyclable materials are going to the landfill every day. "We know that all diligent recyclers in the region will appreciate learning how to make sure that their efforts don't go to waste," he said.

Events of note in District 2

6 p.m. Friday, Aug. 11

Willamette Narrows evening paddle

Meet at Willamette Park in West Linn for this 4-mile paddle around Rock Island. Bring your own boat or become a Willamette Riverkeeper for \$35 and use their canoes and gear. Free. Advance registration required; call (503) 223-6418 or send e-mail to amy@willamette-riverkeeper.org.

9 a.m. Saturdays, Aug. 12 and 26

Ivy removal at Tryon Creek

Help enhance Tryon Creek State Natural Area by removing invasive species that compete with native plants and harm the park's trees. Bring gloves and sturdy shoes. Meet at the nature center. Advance registration not required. For more information, call (503) 636-4398.

9 a.m. Saturday, Aug. 12

Plant center work day

Spend a half or whole day at Metro's native plant materials center near Tualatin transplanting seedlings, planting seeds, weeding, building emergent beds or data entry. Gloves, tools, snacks and water will be provided. Advance registration required; call (503) 797-1715.

About Metro

Clean air and clean water do not stop at city limits or county lines. Neither does the need for jobs, a thriving economy and good transportation choices for people and businesses in our region. Voters have asked Metro to help with the challenges that cross those lines and affect the 25 cities and three counties in the Portland metropolitan area.

A regional approach simply makes sense when it comes to protecting open space, caring for parks, planning for the best use of land, managing garbage disposal and increasing recycling. Metro oversees world-class facilities such as the Oregon Zoo, which contributes to conservation and education, and the Oregon Convention Center, which benefits the region's economy.

Your Metro representatives

Metro Council President
David Bragdon

Metro Councilors
Rod Park, District 1
Brian Newman, District 2
Carl Hosticka, District 3
Susan McLain, District 4
Rex Burkholder, District 5
Robert Liberty, District 6

Auditor
Alexis Dow, CPA

Councilor Brian Newman contact information

Address 600 NE Grand Ave.
Portland, OR 97232
Phone (503) 797-1887
Fax (503) 797-1793
E-mail newmanb@metro.dst.or.us
Assistant Amelia Porterfield
Phone (503) 797-1543
E-mail porterfielda@metro.dst.or.us
Web www.metro-region.org

August 2006 dch/final

Printed on recycled paper