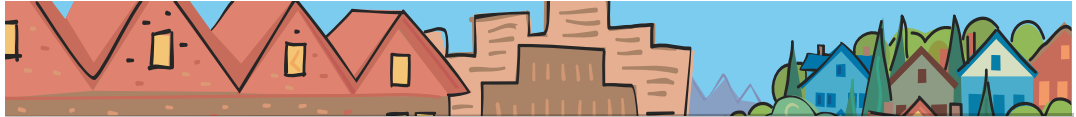


Susan McLain

METRO COUNCIL DISTRICT 4 NEWS



METRO

PEOPLE PLACES
OPEN SPACES

**Susan McLain
represents
District 4, which
includes Northern
Washington
County, Cornelius,
Hillsboro, Forest
Grove, Northwest
Beaverton, Aloha,
Rock Creek, Bonny
Slope, Raleigh Hills,
West Slope, Cedar
Mill and Cedar Hills.**



A message from Susan McLain

Metro strives to factor diversity and cultural competence into all we do. By doing so we improve the livability of the communities we serve and enrich the quality of Metro's workforce.

Metro respects and recognizes the significant benefits received from racial, ethnic, religious, gender, cultural, disability, age, sexual orientation, gender identity and socioeconomic diversities. The value of diversity is achieved through awareness, education and positive recognition of cultural differences within the workplace and is expressed in our cohesive relationships within the workplace and the community.

In 2005, the Metro Council developed a strategic plan and critical success factors for the agency, including Workforce Excellence and "providing leadership in the community through our diversity practices." In response to this objective, Michael Jordan, Chief Operating Officer, convened the Diversity Action Team, on which I have been proud to serve.

The Diversity Action Team recently completed development of a Metro Diversity Plan, which includes measurable objectives within the core areas of procurement, membership on citizen advisory committees, and recruitment and retention of employees. The Metro Council passed the plan on August 17. Over the next five years, Metro will incorporate targeted objectives into our everyday work. I am glad to have been a part of this effort and am excited to see the results as we go forward.

— Susan McLain

Metro and partners increase construction recycling

A year-end survey of contractors, architects and engineers indicates that a Metro program aimed at reducing waste from the construction and demolition industry (C&D) is continuing to have a positive effect on the local industry's recycling operations.

The C&D industry has one of the largest impacts on the region's landfills. Metro estimates that 20 percent of the region's 1.3 million tons of waste brought to regional landfills comes directly from building activity, and of that waste, as much as 60 percent could be recycled, reused or otherwise diverted from the landfills.

The program is a partnership with several organizations representing more than 2,000 area construction professionals. The centerpiece is Metro's "Construction Industry Recycling Toolkit," a comprehensive directory of more than 100 recycling and salvage facilities in the metro region.

The survey reveals that 67 percent of the members of the partner organizations have seen the Toolkit, up from 63 percent in 2005 and 60 percent in 2004. It also shows that overall awareness of sustainable construction techniques is increasing, and that recycling among partnership members is up. Wood, cardboard, metal and glass were all categories that saw increased

continued

Construction recycling

continued from page 1

recycling rates among those surveyed between 2005 and 2006.

The Toolkit is available as a printed guide, on-line at www.metro-region.org/toolkit, and also as a mini CD. In addition to the Toolkit, Metro also offers a "Salvage Planning Guide," which helps architects and developers design and specify construction projects that generate less C&D waste.

New Look regional forum asked, "How do we grow from here?"

In my last newsletter, I wrote about a regional forum hosted by the Metro Council as part of its New Look at Regional Choices. The New Look is divided into three broad policy categories:

1. Investing in our communities—how we steer growth into existing commercial areas and promote vibrant mixed-use centers that use land most efficiently and provide more housing and transportation options for residents.
2. The shape of the region—how we manage expansion of the urban growth boundary in a way that protects valuable agricultural land, but also allows for responsible growth in outlying areas.
3. The Regional Transportation Plan—how we update the plan to make it financially realistic and support the region's growth management values.

At the June 23 forum, nearly 300 citizens, elected officials, business leaders, planners and environmental advocates were asked to think of new, creative ways to implement the 2040 Growth Concept.

Several themes emerged, including suggestions on making strategic investments, especially in centers, corridors and employment areas; adapting and changing policies and legal requirements in order to create greater flexibility; encouraging more development in specific areas while limiting it in others; continuing to protect the natural environment; and providing housing choices for people at all stages in their lives.

A more detailed summary of suggestions will be available soon on the New Look web site: www.metro-region.org/newlook.

As the New Look continues, this input will be used to refine new financial investment strategies and potential changes to state law and local policies that will help this region remain a great place to live and work, even as about a million more people are born or move here in the next 25 years.

Events of note in District 4

Noon Wednesdays, September 6, 13, 20 and 27
Lunch with the birds at Jackson Bottom
Spend your lunch hour learning how to identify birds at Jackson Bottom Wetlands Preserve. Spotting scopes, binoculars and field guides provided. Meet at the north viewing shelter next to the Clean Water Services treatment plant on Highway 219. Free. Registration not required. For more information, call (503) 681-6278.

10:30 a.m. Saturday, September 9
Hiker's wildlife survey orientation
Join instructor Cara Goodwin at Jackson Bottom Wetlands Preserve to become familiar with the preserve trails and learn wildlife identification, observation techniques and data collection. Age 9 and older. Bring binoculars if you have them. Free. Advance registration required; call Karen at (503) 681-6206.

7 p.m. Saturday, September 23
Salamanders to Stars at Jackson Bottom
Bring the whole family to a night full of nature. Learn about owls, amphibians and other wildlife; then open your eyes to the wonder of the stars with the Rose City Astronomers. Facilities and some trails are wheelchair accessible. Free. Advance registration not required. For more information, call (503) 681-6278.

10:30 a.m. Saturday, September 30
Migrating raptors at Jackson Bottom
Join instructor Heidi Lambek at Jackson Bottom Wetlands Preserve to learn about migrating raptors via a classroom presentation and a walk in the preserve. Ages 13 and older. Free. Advance registration required; call Jan at (503) 681-6283.

Councilor Susan McLain contact information

Address 600 NE Grand Ave.
Portland, OR 97232
Phone (503) 797-1553
Fax (503) 797-1793
E-mail mclains@metro.dst.or.us

Assistant Amelia Porterfield
Phone (503) 797-1543
E-mail porterfielda@metro.dst.or.us

Web www.metro-region.org

About Metro

Clean air and clean water do not stop at city limits or county lines. Neither does the need for jobs, a thriving economy and good transportation choices for people and businesses in our region. Voters have asked Metro to help with the challenges that cross those lines and affect the 25 cities and three counties in the Portland metropolitan area.

A regional approach simply makes sense when it comes to protecting open space, caring for parks, planning for the best use of land, managing garbage disposal and increasing recycling. Metro oversees world-class facilities such as the Oregon Zoo, which contributes to conservation and education, and the Oregon Convention Center, which benefits the region's economy.

Your Metro representatives

Metro Council President
David Bragdon

Metro Councilors
Rod Park, District 1
Brian Newman, District 2
Carl Hosticka, District 3
Susan McLain, District 4
Rex Burkholder, District 5
Robert Liberty, District 6

Auditor
Alexis Dow, CPA

September 2006 dch/final
Printed on recycled paper