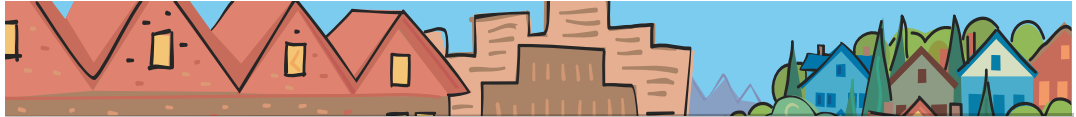


Carl Hosticka

METRO COUNCIL DISTRICT 3 NEWS



METRO

PEOPLE PLACES
OPEN SPACES

Carl Hosticka represents District 3, which includes portions of Washington and Clackamas counties and the cities of Beaverton, Durham, King City, Sherwood, Tigard, Tualatin and Wilsonville.



Access to affordable health care a regional concern

Why is Metro getting involved in health care? You may have heard that question recently. No unit of government has successfully addressed this issue, so who better than the regional government to take it up?

Access to affordable health care is a regional concern. Health care costs consume an ever-greater share of household budgets, business profits and government resources, while access to affordable health care continues to decline.

If health care costs were to continue to rise at the same rate, in less than 20 years, all of our nation's resources would be spent on health care. Individuals would not have any money for food, shelter and clothing. So something has to change eventually. It is not a matter of if, but when. It is better for us to be at the table early working on a solution that will preserve our community and quality of life.

The three issues we are concerned about are: cost, access, and the land use and transportation effects of siting health care facilities. The new construction and placement of health care facilities are important factors in the rising costs of health care -- which employers, consumers and taxpayers all share. The current health care delivery system is shaped mostly by the business decisions of individual hospitals and physician groups, rather than by a coordinated response to community needs.

Because of the lack of statewide leadership in enhancing access to affordable health care, local citizens have asked Metro to play a role. At this stage, Metro has agreed to involve health care consumers, physicians, businesses, hospital representatives and stakeholders in a broader community discussion regarding regional solutions to enhancing access to health care. We are looking at the scope of the issue to determine if this is something Metro may decide to pursue further.

Some people argue that Metro should not get involved because the health care issue is complicated and both the national and state government have not addressed it effectively.

Quite the contrary. It's a question that begs for leadership.

—Carl Hosticka

Metro Council awards \$560,000 in Nature in Neighborhoods grants

The Metro Council awarded grants for 32 projects to protect fish and wildlife throughout the region. Funding is from a \$1 million program for nature-friendly projects, and is part of Metro's Nature in Neighborhoods initiative.

"I am pleased to see these on-the-ground projects that will protect our urban natural areas," said Metro Deputy Council President Carl Hosticka. "We need nature

for our quality of life. With local partners and matching funds, this program is a great example of regional cooperative leadership."

Because larger grants required matching funds, Metro's \$560,000 investment leverages a total of \$3.1 million. Funds were generated from excise taxes collected on solid waste disposal. Remaining dollars will be awarded in 2007.

continued

Nature in Neighborhoods grants

continued from page 1

Grants awarded in District 3:

Tualatin Riverkeepers - \$ 4,900

Tualatin Basin Restoration Collaborative: Knotweed and Invasive Species Control. Convenes organizations to focus on eradication efforts.

SOLV - \$23,720

Team Up for Watershed Health: Tualatin Basin. Restoration and stewardship of Copper Creek, Rosa Park, Beacon Hill Wetlands and Vale Park.

City of Beaverton - \$5,552

Restoration of Camille and Golden ponds.

Raindrops to Refuge - \$20,000

Sherwood Community Natural Resources Outreach and Education. To create awareness of and involvement in the protection and restoration of natural areas in and around Sherwood.

A full list of region-wide grants can be found at www.metro-region.org/nature.

Kids of all ages enjoy summer events at Oregon Zoo

It's time for picnics, music and summer programs at Metro's Oregon Zoo!

The Wells Fargo Summer Concerts at Oregon Zoo presented by Fred Meyer begins June 21. Discover artists from Senegal and Puerto Rico and dance along with crowd favorites such as the Indigo Girls and Pink Martini. The Wednesday "Plus" Concerts feature the best of world music. Admission is \$9.50, or free for zoo members at the "Plus" level or higher. Premium concerts feature world-renowned artists. Tickets (\$18-\$26 each) are available in advance at the zoo or through TicketsWest.

Summer educational programming includes the Winged Wonders butterfly exhibit, Summer Camp at the zoo, and on-grounds programs for all ages.

For more details on these and other events, visit www.oregonzoo.org or call (503) 226-1561. The hearing impaired can call TDD (503) 797-1804.

Forum, tours are focus of Get Centered! events

Get Centered!, a multi-year campaign dedicated to spur investment and build the region's vibrant

downtowns and main streets, offers a forum and tours to close out its 2006 event series. Events are cosponsored by TriMet, the city of Portland and the Oregon Transportation and Growth Management program.

June 8 brownbag Forum: Public Financing Tools for Centers

A panel will discuss proven approaches and new financing tools to create successful mixed-use projects in centers and around transit. Free. Noon to 1:30 p.m. at Metro Regional Center, 600 NE Grand Ave., Portland.

June 27 Hillsboro Regional Center Tour

Join Mayor Tom Hughes and others as they showcase the Gold LEED-rated Hillsboro Civic Center and the first phase of Pacific University's new health professions campus. Registration limited; \$10. Register online at www.metro-region.org/getcentered.

Tualatin River National Wildlife Refuge grand opening

11:30 Saturday, June 3 opening ceremony
1:30 to 4 p.m. Saturday, June 3
7 a.m. to 4 p.m. Sunday, June 4

Check out the new Tualatin River National Wildlife Refuge visitor facilities near Sherwood and celebrate a community dream come true after 15 years. At this free event, take a tour led by Metro naturalists. Enjoy wildlife watching, hands-on activities, exhibits and food. Free parking Saturday at Home Depot in Sherwood with free, continuous shuttle service; Sunday at the refuge. Or take the new #12 TriMet bus service. Visitors needing special assistance will be accommodated. For more information, call (503) 972-7714 or visit www.friendsoftualatinrefuge.org.

Councilor Carl Hosticka contact information

Address 600 NE Grand Ave.
Portland, OR 97232
Phone (503) 797-1549
Fax (503) 797-1793
E-mail hostickac@metro.dst.or.us

Assistant Linnea Nelson
Phone (503) 797-1886
E-mail nelsonl@metro.dst.or.us

Web www.metro-region.org

About Metro

Clean air and clean water do not stop at city limits or county lines. Neither does the need for jobs, a thriving economy and good transportation choices for people and businesses in our region. Voters have asked Metro to help with the challenges that cross those lines and affect the 25 cities and three counties in the Portland metropolitan area.

A regional approach simply makes sense when it comes to protecting open space, caring for parks, planning for the best use of land, managing garbage disposal and increasing recycling. Metro oversees world-class facilities such as the Oregon Zoo, which contributes to conservation and education, and the Oregon Convention Center, which benefits the region's economy.

Your Metro representatives

Metro Council President
David Bragdon

Metro Councilors
Rod Park, District 1
Brian Newman, District 2
Carl Hosticka, District 3
Susan McLain, District 4
Rex Burkholder, District 5
Robert Liberty, District 6

Auditor
Alexis Dow, CPA

June 2006 dch/final

Printed on recycled paper.