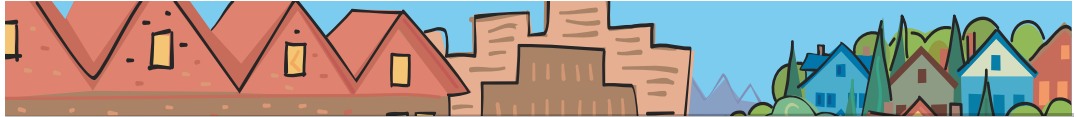


Susan McLain

METRO COUNCIL DISTRICT 4 NEWS



METRO

PEOPLE PLACES
OPEN SPACES

**Susan McLain
represents
District 4, which
includes Northern
Washington
County, Cornelius,
Hillsboro, Forest
Grove, Northwest
Beaverton, Aloha,
Rock Creek, Bonny
Slope, Raleigh Hills,
West Slope, Cedar
Mill and Cedar Hills.**



A message from Susan McLain

Summer is a great time to get out and get involved in some of the many events happening around the region.

The grand opening of the Tualatin River National Wildlife Refuge is going to be an exciting event to take part in. Kids of all ages can find fun things to do at the Oregon Zoo this summer. Look for details about both these opportunities in the accompanying articles.

You can also join me at the Metro booth at either the Washington or Clackamas County Fair this summer. Volunteering for Metro at the county fairs is an excellent opportunity to connect with other citizens and talk about the good work that Metro and others do all across the region. If you're interested in volunteering, contact Amelia Porterfield at (503) 797-1543.

Metro Regional Parks and Greenspaces is always looking for volunteers to support its diverse work. Volunteers monitor wildlife at a variety of open spaces, support our native plant materials center, lead nature walks, and restore lands. Contact Beth Gergick, Coordinator of Volunteer Resources, at (503) 797-1733 or gergickb@metro.dst.or.us to explore how you can take advantage of our unique opportunities.

Whether as a volunteer or visitor, I urge you to get out and explore!

—Susan McLain

Metro offers regional perspective on local health care debate

The Metro Council will examine how Metro might help address the high cost of health care in the region. Earlier this spring, Council passed a resolution that directs the agency to study the issue and report back in the fall.

Metro has been asked by regional constituents to develop a public process for siting health care facilities, claiming that unregulated hospital expansions are causing costs in the Portland area to rise, and are reducing certain needed services.

Councilors think that given Metro's service area, a regional approach to health care might be logical, using tools such as land use-planning and policy experts. Metro has agreed to involve health care consumers, physicians, businesses, hospital representatives and stakeholders in a broad community discussion regarding regional

solutions to enhance access to health care. They will look at the scope of the issue to determine if Metro should pursue it further.

For more information, contact Reed Wagner at (503) 797-1584.

Kids of all ages enjoy summer events at Oregon Zoo

It's time for picnics, music and summer programs at Metro's Oregon Zoo!

The Wells Fargo Summer Concerts at Oregon Zoo presented by Fred Meyer begins June 21. Discover artists from Senegal and Puerto Rico and dance along with crowd favorites like the Indigo Girls and Pink Martini. The Wednesday "Plus" Concerts feature the best of World Music.

continued

Summer at Oregon Zoo

continued from page 1

Admission is \$9.50, or free for zoo members at the "Plus" level or higher. Premium Concerts feature world-renowned artists. Tickets (\$18-\$26 each) are available in advance at the zoo or through TicketsWest.

Forum, tours are focus of Get Centered! events

Get Centered!, a multi-year campaign dedicated to spur investment and build the region's vibrant downtowns and main streets, offers a forum and tours to close out its 2006 event series. Events are co-sponsored by TriMet, the city of Portland's Office of Sustainable Development and the Oregon Transportation and Growth Management program.

June 8 Forum: Public Financing Tools for Centers

A panel will discuss proven approaches as well as new financing tools to create successful mixed-use projects in centers and around transit. Noon to 1:30 p.m. at Metro Regional

Summer educational programming includes the Winged Wonders butterfly exhibit; Summer Camp at the Zoo; and summer on-grounds programs for all ages.

For more details on these and other events, visit www.oregonzoo.org or call the Oregon Zoo at (503) 226-1561. The hearing impaired can call TDD (503) 797-1804.

Center, 600 NE Grand Ave., Portland. Admission is free. Bring your own lunch.

June 27 Tour: Hillsboro Regional Center Join Mayor Tom Hughes and other dignitaries as they showcase the Gold LEED-rated Hillsboro Civic Center and the first phase of Pacific University's new health professions campus. Registration limited; \$10. Register online at www.metro-region.org/getcentered.

For a full list of events, including a July 19 Pearl District and September Vancouver, B.C. tour, call (503) 797-1757 or send e-mail to getcentered@metro.dst.or.us.

Tualatin River National Wildlife Refuge grand opening

11:30 Saturday, June 3 opening ceremony
1:30 to 4 p.m. Saturday, June 3
7 a.m. to 4 p.m. Sunday, June 4

Check out the new Tualatin River National Wildlife Refuge visitor facilities near Sherwood and celebrate a community dream come true after 15 years. At this free event, take a tour led by Metro naturalists. Enjoy wildlife watching, hands-on activities, exhibits and food. Free parking Saturday at Home Depot in Sherwood with free, continuous shuttle service; Sunday at the refuge. Or take the new #12 TriMet bus service. Visitors needing special assistance will be accommodated. For more information, call (503) 972-7714 or visit www.friendsoftualatinrefuge.org.

Events of note in District 4

8 a.m. Monday, June 5

First Monday at Jackson Bottom

Join naturalist Sarah Pinnock and explore wetland soils, water quality, plants, birds, mammals, amphibians, reptiles and more. \$5. To register, call (503) 681-6278.

Noon, Wednesday, June 7, 14, 21 and 28
Lunch with the birds at Jackson Bottom

Learn how to identify birds with a seasoned naturalist. Spotting scopes, binoculars and field guides provided. Meet at north viewing shelter next to Clean Water Services treatment plant on Highway 219 south of Hillsboro. Free. Registration is not required. For more information, call (503) 681-6278.

10 a.m. Saturday, June 17

Watershed tour of Rock and Bronson creeks

Explore the creeks' natural history and stream health. \$5 suggested donation. Registration required. Call (503) 629-6305 ext. 2953.

Councilor Susan McLain contact information

Address 600 NE Grand Ave.
Portland, OR 97232
Phone (503) 797-1553
Fax (503) 797-1793
E-mail mclains@metro.dst.or.us

Assistant Amelia Porterfield
Phone (503) 797-1543
E-mail porterfielda@metro.dst.or.us

Web www.metro-region.org

About Metro

Clean air and clean water do not stop at city limits or county lines. Neither does the need for jobs, a thriving economy and good transportation choices for people and businesses in our region. Voters have asked Metro to help with the challenges that cross those lines and affect the 25 cities and three counties in the Portland metropolitan area.

A regional approach simply makes sense when it comes to protecting open space, caring for parks, planning for the best use of land, managing garbage disposal and increasing recycling. Metro oversees world-class facilities such as the Oregon Zoo, which contributes to conservation and education, and the Oregon Convention Center, which benefits the region's economy.

Your Metro representatives

Metro Council President
David Bragdon

Metro Councilors
Rod Park, District 1
Brian Newman, District 2
Carl Hosticka, District 3
Susan McLain, District 4
Rex Burkholder, District 5
Robert Liberty, District 6

Auditor
Alexis Dow, CPA

June 2006 dch/final

Printed on recycled paper