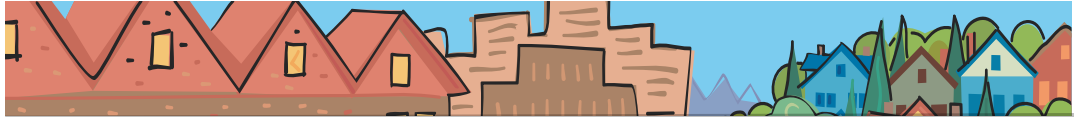


# Carl Hosticka

## METRO COUNCIL DISTRICT 3 NEWS



**METRO**

PEOPLE PLACES  
OPEN SPACES

Carl Hosticka  
represents  
District 3, which  
includes portions  
of Washington and  
Clackamas counties  
and the cities of  
Beaverton, Durham,  
King City, Sherwood,  
Tigard, Tualatin and  
Wilsonville.



### Green building partnerships benefit all

As part of its Nature in Neighborhoods initiative, Metro has hired staff members to work with developers and builders on nature-friendly design practices. Metro's development practices coordinators spend half their working hours at the [Home Builders Association of Metropolitan Portland](#) (HBA) offices helping developers maximize their investments in "green building" and minimize the impacts of development on natural resources.

This includes providing technical assistance through site planning, sustainable landscaping, stormwater planning and construction techniques. A Nature in Neighborhoods planner also serves as liaison to work with local jurisdictions to break down barriers to green building practices.

This month, Metro, HBA and other partners will launch a series of seminars entitled "Green from the Ground Up" (see related article).

These programs represent exciting and progressive partnerships in which government and business work together to help achieve the quality of life we all desire for our region. Development standards provide some habitat protections, but ultimately it will take cooperative effort from all of us to protect our natural environment.

If you are interested in development or building practices, I encourage you to take advantage of the seminars. For information on nature-friendly gardening for your own home, contact Metro at [www.metro-region.org/gardening](http://www.metro-region.org/gardening) or (503) 234-3000.

— Carl Hosticka

### "Green from the Ground Up" seminars begin Nov. 7

Metro invites developers and builders to attend its new "Green from the Ground Up" seminars to learn how to preserve natural features. Part of Metro's Nature in Neighborhoods initiative, the seminar series starts this month and runs through March 2007. Metro and leading experts in building and site planning will show developers how to get more green from their investment.

People move to our region for its natural beauty and quality of life, and are willing to spend money on features that are nature-

friendly. Green development practices can add value to a development and make it easier to market. Added value includes lot premiums, faster sales, increased sales volume, reduced costs and maintenance (in some cases) and improved public image.

The community benefits with reduced impacts on natural resources, especially water. Benefits include cleaner streams, reduced stormwater management costs, smaller detention ponds, improved flow to waterways, increased urban forested area, improved air quality, enhanced appearance and reduced urban-heat-island effect.

*continued*

## "Green from the Ground Up"

*continued from page 1*

The seminars are a partnership with Metro, Environmental Protection Agency, Oregon Department of Environmental Quality, Clackamas River Basin Council, Clackamas Soil and Water Conservation District and the Home Builders Association of Metropolitan Portland.

The first seminar takes place from 7:30 to 9:30 a.m. Tuesday, November 7 in Wilsonville, and highlights flow-through planters, small-lot developments and dealing with building departments on construction changes. Admission is \$10. Continuing education credits are also available.

For a complete list of seminars around the region and to register, go to [www.metro-region.org/nature](http://www.metro-region.org/nature) or call (503) 797-1850.

### I-5 to 99W Connector open houses

The I-5 to 99W Connector Project is a study to address the possibility of connecting these two busy roadways. The need for such a connector has been recognized for more than a decade.

Traffic demand in the southwestern portion of the region has grown substantially, leading to increasingly congested conditions. This increase comes from more people living and working in Tigard, Tualatin, Sherwood and Wilsonville; moving freight into and out of the area; growth throughout the region; and statewide traffic.

Metro's Regional Transportation Plan and transportation plans for Washington County, Sherwood and Tualatin identify the need for a transportation solution in this area to address the growing travel demand. The Oregon Transportation Commission designated this as a project of statewide significance, further confirming its importance.

Washington County, Metro and the Oregon Department of Transportation are jointly leading the project and providing funding for it. They are joined by the cities of Sherwood, Tualatin and Wilsonville; Clackamas County; and the Federal Highway Administration.

To help identify potential solutions, the project team is hosting three open houses

to gather input from the public. Areas to be discussed include:

- potential corridors where new transportation facilities could be located, and where these corridors should connect to I-5 and Highway 99W
- potential upgrades to existing roadways or intersections that could improve regional and intrastate travel
- constraints or areas that should be avoided as corridors are developed.

Open house dates:

**5:30 to 8:30 p.m. Wednesday, Nov. 29**  
Tualatin High School  
22300 SW Boones Ferry Road, Tualatin

**5:30 to 8:30 p.m. Thursday, Nov. 30**  
Middleton Elementary School  
23505 SW Old Highway 99W, Sherwood

**5:30 to 8:30 p.m. Wednesday, Dec. 6**  
Wilsonville City Hall  
29799 SW Town Center Loop E, Wilsonville

The same information will be available at all meetings. For more information, call (503) 595-9915, send e-mail to [info@i5to99w.org](mailto:info@i5to99w.org), or visit [www.i5to99w.org](http://www.i5to99w.org).

### Cooper Mountain open house

**Cooper Mountain Natural Area open house**  
**7 p.m. Thursday, Nov. 16**  
**Tualatin Hills Nature Park Interpretive Center**  
**15655 SW Millikan Way, Beaverton**  
*Join the project working group, consultants and Metro staff to provide input on the site design for planned visitor improvements and habitat restoration. For more information, contact Lora Price at (503) 797-1846 or [pricel@metro.dst.or.us](mailto:pricel@metro.dst.or.us).*

### Councilor Carl Hosticka contact information

Address	600 NE Grand Ave. Portland, OR 97232
Phone	(503) 797-1549
Fax	(503) 797-1793
E-mail	<a href="mailto:hostickac@metro.dst.or.us">hostickac@metro.dst.or.us</a>
Assistant	Linnea Nelson
Phone	(503) 797-1886
E-mail	<a href="mailto:nelsonl@metro.dst.or.us">nelsonl@metro.dst.or.us</a>
Web	<a href="http://www.metro-region.org">www.metro-region.org</a>

## About Metro

Clean air and clean water do not stop at city limits or county lines. Neither does the need for jobs, a thriving economy and good transportation choices for people and businesses in our region. Voters have asked Metro to help with the challenges that cross those lines and affect the 25 cities and three counties in the Portland metropolitan area.

A regional approach simply makes sense when it comes to protecting open space, caring for parks, planning for the best use of land, managing garbage disposal and increasing recycling. Metro oversees world-class facilities such as the Oregon Zoo, which contributes to conservation and education, and the Oregon Convention Center, which benefits the region's economy.

### Your Metro representatives

Metro Council President  
David Bragdon

Metro Councilors  
Rod Park, District 1  
Brian Newman, District 2  
Carl Hosticka, District 3  
Susan McLain, District 4  
Rex Burkholder, District 5  
Robert Liberty, District 6

Auditor  
Alexis Dow, CPA

November 2006 dch/final  
*Printed on recycled paper*