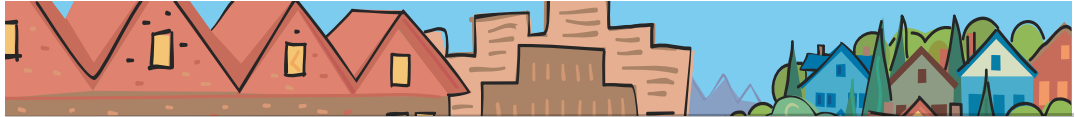


# Susan McLain

## METRO COUNCIL DISTRICT 4 NEWS



**METRO**

PEOPLE PLACES  
OPEN SPACES

**Susan McLain  
represents  
District 4, which  
includes Northern  
Washington  
County, Cornelius,  
Hillsboro, Forest  
Grove, Northwest  
Beaverton, Aloha,  
Rock Creek, Bonny  
Slope, Bethany,  
Raleigh Hills, West  
Slope, Cedar Mill  
and Cedar Hills.**



### A message from Susan McLain

November will be full of several interesting events around the region that I encourage you to explore.

One event I am proud to be a part of is the Stormwater Awards Ten-Year Retrospective. On November 7, Metro will bring people together to discover what lessons were learned from award-winning designs from a decade ago. I was able to be involved in the effort ten years ago to highlight and award exemplary practices in stormwater management, and now am lucky to participate in reflecting back on how far we have come and how much work we have yet to do. See the article below for more information on this and other interesting events sponsored by Metro's Nature in Neighborhoods program.

Also, don't forget to visit ZooLights at the Oregon Zoo this year. From November 25 to December 31, the Zoo will be transformed into a winter wonderland with 200 sparkling animal sculptures formed from more than a half-million lights. The annual celebration features hundreds of musical groups, a ride on the zoo's brightly lit train, model railroad display, a troupe of costumed animal characters, an artist market and seasonal culinary treats. For more information about Zoo Lights, call (503) 220-3687.

— Susan McLain

### Nature in Neighborhoods offers new programs, second round of grants

Metro's Nature in Neighborhoods initiative is offering two new programs of interest to builders, developers and property owners and is accepting pre-applications for its second round of grants.

#### *Seminars*

The "Green from the Ground Up" seminars will provide information on how to preserve natural features and get more "green" from investments. Green development practices can add value to a development and make it easier to market. Added value includes lot premiums, faster sales, increased sales volume, reduced costs and maintenance (in some cases), and improved public image.

The seminars are presented in partnership with Metro, Environmental Protection Agency, Oregon Department of

Environmental Quality, Clackamas River Basin Council, Clackamas Soil and Water Conservation District and the Home Builders Association of Metropolitan Portland. For a complete list and to register, go to [www.metro-region.org/nature](http://www.metro-region.org/nature) or call (503) 797-1850.

#### *Stormwater Awards Ten-Year Retrospective*

Participants of this event will hear about a decade of lessons learned from 12 sites that won the 1996-1997 Stormwater Design Award Competition. The competition was created to select and recognize projects that effectively integrated stormwater management, urban design goals, and natural resource protection and enhancement into the urban environment.

*continued*

## Nature in Neighborhoods

*continued from page 1*

The Retrospective features an appraisal of the projects with site owners, engineers, designers and a group of expert panelists, as well as a discussion on how future planning can be improved to incorporate strategies that foster sustainability in both public-sector and private-sector stormwater management practices and facilities. To register for the free event, which takes place at the Metro Regional Center on Tuesday, November 7 from 1 to 4:30 p.m., call (503) 797-1555 or e-mail [harlanc@metro.dst.or.us](mailto:harlanc@metro.dst.or.us).

### *Nature in Neighborhoods grants*

Following on the heels of an earlier round of grants is another opportunity for private individuals, groups or organizations to apply for funding. In spring of this year, Metro awarded \$560,000 in grants for 32 projects. In the late spring next year, up to \$370,000 will be awarded.

Projects must be within the jurisdictional boundary of Metro and focused on watershed restoration and community building through hands-on restoration, education and outreach. The process includes a pre-application in which successful proposals will be selected to apply for final funding. The pre-application period ends January 18.

Applicants are required to provide a level of match depending on the amount of their request. To obtain a copy of the pre-application, go to [www.metro-region.org](http://www.metro-region.org) and click on the Nature in Neighborhood logo. Interested parties can also contact Janelle Geddes at [geddesj@metro.dst.or.us](mailto:geddesj@metro.dst.or.us) or at (503) 797-1550.

### **I-5 to 99W Connector open houses**

The I-5 to 99W Connector Project is a study to address the possibility of connecting these two busy roadways, which has been recognized as a need for more than a decade.

Traffic demand in the southwestern portion of the region has grown substantially, leading to increasingly congested conditions. Growth comes from more people living and working in Tigard, Tualatin, Sherwood and Wilsonville; moving freight into and out of the area; growth throughout the region; and statewide traffic.

Metro's Regional Transportation Plan, the Oregon Highway Plan and transportation plans for Washington County, Sherwood and Tualatin identify the need for a transportation solution in this area to address the growing travel demand. The Oregon Transportation Commission designated this as a project of statewide significance, further confirming its importance.

To help identify potential solutions, the project team is hosting three open houses to gather input from the public.

Areas to be discussed include:

- potential corridors where new transportation facilities could be located, and where these corridors should connect to I-5 and Highway 99W
- potential upgrades to existing roadways or intersections that could improve regional and intrastate travel
- constraints or areas that should be avoided as corridors are developed.

Open house dates:

**5:30 to 8:30 p.m. Wednesday, Nov. 29**  
Tualatin High School  
22300 SW Boones Ferry Road, Tualatin

**5:30 to 8:30 p.m. Thursday, Nov. 30**  
Middleton Elementary School  
23505 SW Old Highway 99W, Sherwood

**5:30 to 8:30 p.m. Wednesday, Dec. 6**  
Wilsonville City Hall  
29799 SW Town Center Loop E, Wilsonville

The same information will be available at all meetings. For more information, call (503) 595-9915, send e-mail to [info@i5to99w.org](mailto:info@i5to99w.org), or visit [www.i5to99w.org](http://www.i5to99w.org).

## About Metro

Clean air and clean water do not stop at city limits or county lines. Neither does the need for jobs, a thriving economy and good transportation choices for people and businesses in our region. Voters have asked Metro to help with the challenges that cross those lines and affect the 25 cities and three counties in the Portland metropolitan area.

A regional approach simply makes sense when it comes to protecting open space, caring for parks, planning for the best use of land, managing garbage disposal and increasing recycling. Metro oversees world-class facilities such as the Oregon Zoo, which contributes to conservation and education, and the Oregon Convention Center, which benefits the region's economy.

### **Your Metro representatives**

Metro Council President  
David Bragdon

Metro Councilors  
Rod Park, District 1  
Brian Newman, District 2  
Carl Hosticka, District 3  
Susan McLain, District 4  
Rex Burkholder, District 5  
Robert Liberty, District 6

Auditor  
Alexis Dow, CPA

### **Councilor Susan McLain contact information**

Address	600 NE Grand Ave. Portland, OR 97232
Phone	(503) 797-1553
Fax	(503) 797-1793
E-mail	<a href="mailto:mclains@metro.dst.or.us">mclains@metro.dst.or.us</a>
Assistant	Amelia Porterfield
Phone	(503) 797-1543
E-mail	<a href="mailto:porterfielda@metro.dst.or.us">porterfielda@metro.dst.or.us</a>
Web	<a href="http://www.metro-region.org">www.metro-region.org</a>

November 2006 dch/final  
*Printed on recycled paper*