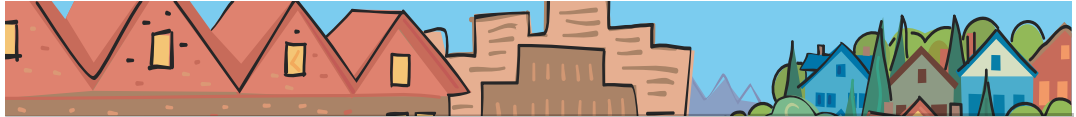


# Rex Burkholder

## METRO COUNCIL DISTRICT 5 NEWS



**METRO**

PEOPLE PLACES  
OPEN SPACES

Rex Burkholder  
represents District  
5, which includes  
Northwest Portland,  
North Portland,  
Northeast Portland,  
downtown Portland,  
a portion of  
Southwest Portland  
and a portion of  
Southeast Portland.



### Metro interns REIN supreme

One of the goals that the Metro Council and I have is to encourage and support the leadership of organizations and governments to serve the interests of regional residents.

For example, the Regional Environmental Information Network (REIN) is a new, on-line mapping database of conservation efforts around the region. It provides a virtual gathering place for information sharing and networking among the people, community groups, government agencies, nonprofit organizations and environmental educators working to protect, restore and monitor the region's natural resources. Information collected via the REIN enables Metro to track the region's ecological health over time and encourages strategic coordination and collaboration across the region. We are still adding a few features, but the tool is live and you can get a preview at [www.REIN.org/index.cfm](http://www.REIN.org/index.cfm), and even enter your own projects.

The REIN.org project also provides a great opportunity for youth interns to gain valuable experience and job training. The first four post-high school graduate interns to participate in this project are Sade Rodgers, Edward Elder, Amber Coats and Nicole Adamski. The interns will collect and enter projects in the REIN database that will document regional grassroots conservation efforts.

This internship program is an exciting new addition here at Metro. We are partnering with Open Meadow and Work Systems, Inc. to bring these interns on board for a twelve-week internship engagement. The youth internship program provides services for young people with or without a high school diploma or GED who lack clear career or college goals or skills to succeed in postsecondary education or the workplace. According to intern Edward Elder, "I will get experience with urban ecology, creating and giving presentations and hopefully references to apply for college grant money." I would like to thank Kevin Dull, Human Resources Manager, for bringing this program to Metro.

If you like the idea of the REIN but don't have time to enter your own environmental projects, here is your chance to get free help from our interns and let the region know about your work, find partners, sites and volunteers. For more information, contact Lori Hennings at (503) 797-1940 or [hennings@metro.dst.or.us](mailto:hennings@metro.dst.or.us).

— Rex Burkholder

### Nature in Neighborhoods offers new programs, second round of grants

Metro's Nature in Neighborhoods initiative is offering two new programs of interest to builders, developers and property owners and is accepting pre-applications for its second round of grants.

*Seminars.* The "Green from the Ground Up" seminars will provide information on how to preserve natural features and get

more "green" from investments. Green development practices can add value to a development and make it easier to market. Added value includes lot premiums, faster sales, increased sales volume, reduced costs and maintenance (in some cases), and improved public image.

*continued*

## Nature in Neighborhoods

*continued from page 1*

The seminars are presented in partnership with Metro, Environmental Protection Agency, Oregon Department of Environmental Quality, Clackamas River Basin Council, Clackamas Soil and Water Conservation District and the Home Builders Association of Metropolitan Portland. For a complete list and to register, go to [www.metro-region.org/nature](http://www.metro-region.org/nature) or call (503) 797-1850.

### *Stormwater Awards Ten-Year Retrospective.*

Participants of this event will hear about a decade of lessons learned from 12 sites that won the 1996-1997 Stormwater Design Award Competition. The competition was created to select and recognize projects that effectively integrated stormwater management, urban design goals, and natural resource protection and enhancement into the urban environment.

The Retrospective features an appraisal of the projects with site owners, engineers, designers and a group of expert panelists, as well as a discussion on how future planning can be improved to incorporate strategies that foster sustainability in both public-sector and private-sector stormwater management practices and facilities. To register for the free event, which takes place at the Metro Regional Center on Tuesday, November 7 from 1 to 4:30 p.m., call (503) 797-1555 or email [harlanc@metro.dst.or.us](mailto:harlanc@metro.dst.or.us).

*Nature in Neighborhoods grants.* Following on the heels of an earlier round of grants is another opportunity for private individuals, groups or organizations to apply for funding. In spring of this year, Metro awarded \$560,000 in grants for 32 projects. In the late spring next year, up to \$370,000 will be awarded.

Projects must be within the jurisdictional boundary of Metro and focused on watershed restoration and community building through hands on restoration, education and outreach. The process includes a pre-application in which successful proposals will be selected to apply for final funding. The pre-application period ends January 18, 2007.

Applicants are required to provide a level of match depending on the amount of their request. To obtain a copy of the pre-application, go to [www.metro-region.org](http://www.metro-region.org) and click on the Nature in Neighborhood logo. Interested parties can also contact Janelle Geddes at [geddesj@metro.dst.or.us](mailto:geddesj@metro.dst.or.us) or (503) 797-1550.

## I-5 to 99W Connector open houses

The I-5 to 99W Connector Project is a study to address the possibility of connecting these two busy roadways, which has been recognized as a need for more than a decade.

Traffic demand in the southwestern portion of the region has grown substantially, leading to increasingly congested conditions. Growth comes from more people living and working in Tigard, Tualatin, Sherwood and Wilsonville; moving freight into and out of the area; growth throughout the region; and statewide traffic.

Metro's Regional Transportation Plan, the Oregon Highway Plan and transportation plans for Washington County, Sherwood and Tualatin identify the need for a transportation solution in this area to address the growing travel demand. The Oregon Transportation Commission designated this as a project of statewide significance, further confirming its importance.

To help identify potential solutions, the project team is hosting three open houses to gather input from the public.

Areas to be discussed include:

- potential corridors where new transportation facilities could be located, and where these corridors should connect to I-5 and Highway 99W
- potential upgrades to existing roadways or intersections that could improve regional and intrastate travel
- constraints or areas that should be avoided as corridors are developed.

Open house dates:

**5:30 to 8:30 p.m. Wednesday, Nov. 29**

Tualatin High School  
22300 SW Boones Ferry Road, Tualatin

**5:30 to 8:30 p.m. Thursday, Nov. 30**

Middleton Elementary School  
23505 SW Old Highway 99W, Sherwood

**5:30 to 8:30 p.m. Wednesday, Dec. 6**

Wilsonville City Hall  
29799 SW Town Center Loop E, Wilsonville

The same information will be available at all meetings.

For more information, call (503) 595-9915, send e-mail to [info@i5to99w.org](mailto:info@i5to99w.org), or visit [www.i5to99w.org](http://www.i5to99w.org).

## Events of note in District 5

For a complete list of events, check out our online calendar at [calendar.metro-region.org](http://calendar.metro-region.org).

**9 a.m. Saturday, Nov. 4**

### Arbor Lodge Park work party

Come to Arbor Lodge Park in North Portland to join in a new effort to replace the use of pesticides in parks by weeding. Snacks, gloves and tools will be provided. Meet at North Bryant Street and Greeley Avenue. For more information, call Megan at (503) 423-7549.

**9:30 a.m. Saturday, Nov. 4**

### Autumn birds at Smith and Bybee Wetlands

By this time of year, wintering waterfowl and raptors as well as resident birds will have arrived at Smith and Bybee Wetlands, and some fall migrants will still be moving through the area. The falling cottonwood leaves sometimes cover the trail giving it that beautiful "yellow brick road" look. Flocks of noisy geese descending through the golden light make the season obvious. Meet naturalist James Davis in the natural area parking lot on North Marine Drive. Bring binoculars or borrow a pair of ours. Spotting scopes will be provided. Suitable for adults and children 10 and older. Free. Advance registration required; call (503) 797-1715.

**1:30 p.m. Saturday, Nov. 4**

### Mushrooms at Smith and Bybee Wetlands

Join naturalist James Davis for an exploration of the fungi at Metro's Smith and Bybee Wetlands Natural Area. James will talk about the basics of mushrooms and other fungi and how to go about identifying this complicated group of strange and fascinating life forms. We will not be able to identify everything we see, but we will do our best and will enjoy the amazing variety of shapes, colors, textures and smells that make these life forms so intriguing. Suitable for adults and children 12 and older. Meet in the natural area parking lot on North Marine Drive. Registration and payment of \$10 per adult required in advance; children are free. Call (503) 797-1715.

**10 a.m. Saturday, Nov. 11**

### Lone Fir Pioneer Cemetery tour

Embark on a unique history lesson while enjoying the beauty and tranquility of Metro's Lone Fir Pioneer Cemetery in Southeast Portland. The tour highlights Portland's founders, early pioneers and nationally recognized figures, as well as interesting headstones and monuments. Explore 30 acres of mature trees and a very special rose garden. Suitable for all ages. Meet at the main entrance at Southeast 21st Avenue and Morrison Street. Advance registration not required. A suggested

donation of \$10 goes to headstone restoration and educational programs. For more information, call (503) 775-6278.

**2 p.m. Sunday, Nov. 12**

### Veteran's Day at Lone Fir Pioneer Cemetery

Gather at the Soldier's Monument at Metro's Lone Fir Pioneer Cemetery for an event in honor of war veterans and the dedication of a new flagpole erected on the site. Activities will include music and historical presentations with period flags and costumes. Lone Fir, founded in 1855, is located between Southeast 20th and 26th avenues and Morrison and Stark streets in Portland. Free. For more information, call (503) 797-1709.

**9:30 a.m. Saturday, Nov. 18**

### Attracting wildlife to your yard

Go beyond the basics to discover the details of attracting wildlife to your own backyard. What plants will appeal to cedar waxwings? What does it take to create a home for amphibians? Discover how to make your yard wildlife friendly all year round. Explore how your yard can become part of a larger habitat. Learn about wildlife corridors and greenspaces and how you and your neighbors can get connected. Resource materials included. \$40 for zoo members; \$50 for non-members. Advance registration required; call for meeting location and directions. For more information, visit [www.oregonzoo.org](http://www.oregonzoo.org) or call (503) 220-2781.

**Noon Sunday, Nov. 26**

### Smith and Bybee Wetlands paddle trip

Traveling by canoe or kayak is the best way to explore this area in North Portland. Meet at the parking lot on North Marine Drive. Bring a kayak or canoe and personal flotation device. The new water control structure is helping to restore the natural area to a seasonal wetland. The changes are great for wildlife but they make paddle conditions difficult to predict. The trip leader will contact participants if it is necessary to cancel due to low water levels. Advance registration required; call Troy Clark at (503) 249-0482.

## Councilor Rex Burkholder contact information

Address	600 NE Grand Ave. Portland, OR 97232
Phone	(503) 797-1546
Fax	(503) 797-1793
E-Mail	<a href="mailto:burkholderr@metro.dst.or.us">burkholderr@metro.dst.or.us</a>
Assistant	Kathryn Sofich
Phone	(503) 797-1941
E-Mail	<a href="mailto:sofichk@metro.dst.or.us">sofichk@metro.dst.or.us</a>
Web	<a href="http://www.metro-region.org">www.metro-region.org</a>

## About Metro

Clean air and clean water do not stop at city limits or county lines. Neither does the need for jobs, a thriving economy and good transportation choices for people and businesses in our region. Voters have asked Metro to help with the challenges that cross those lines and affect the 25 cities and three counties in the Portland metropolitan area.

A regional approach simply makes sense when it comes to protecting open space, caring for parks, planning for the best use of land, managing garbage disposal and increasing recycling. Metro oversees world-class facilities such as the Oregon Zoo, which contributes to conservation and education, and the Oregon Convention Center, which benefits the region's economy.

### Your Metro representatives

Metro Council President  
David Bragdon

Metro Councilors  
Rod Park, District 1  
Brian Newman, District 2  
Carl Hosticka, District 3  
Susan McLain, District 4  
Rex Burkholder, District 5  
Robert Liberty, District 6

Auditor  
Alexis Dow, CPA

November 2006 dch/final  
Printed on recycled paper