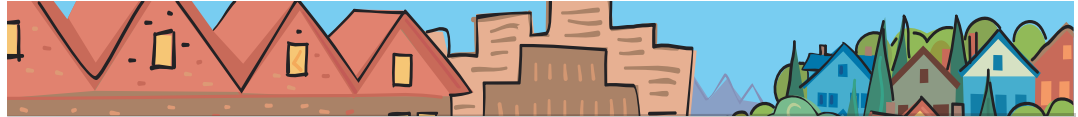


Rod Park

METRO COUNCIL DISTRICT 1 NEWS



METRO

PEOPLE PLACES
OPEN SPACES

Rod Park represents District 1, which includes Fairview, Gresham, Happy Valley, Maywood Park, Troutdale, Wood Village, Damascus and portions of East Portland.



A message from Rod Park

More than 50 citizens came to an open house in November to learn about a proposed nature and golf learning center at Blue Lake Regional Park. The proposed center aims to enhance natural resources and provide an affordable golf learning experience to players of all ages and abilities. If feasible, the learning center would be the next in a series of improvements outlined in a Blue Lake master plan update adopted in 2001. This center would significantly improve a wetland on the site, increase access to the game of golf, and provide the neighboring community with a great place to walk and enjoy nature. It also has the potential to generate new revenue that would support overall operations at Blue Lake Regional Park. Funding for the project would potentially come from several sources including fund balance reserves (transferred to Metro from Multnomah County in 1994), loans, grants and investments from private sector partners.

Planned for an 85-acre underutilized Metro property on the east side of Blue Lake Road, the learning center would offer new players a chance to build their skills while still challenging more experienced players. Plans also include a fitness trail, wildlife watching opportunities and connections to the nearby 40-Mile Loop Trail. Next steps include finding answers to environmental, financial and operational questions that have been identified by the Metro Council, citizens and staff before the project can move forward. Stay tuned for more details.

— Rod Park

Metro Council updates Regional Transportation Plan

Among its many roles, the Metro Council is elected to set the region's transportation policy. In doing so, it's a paramount priority of the Metro Council to invest your limited public dollars where they can produce the best return through an efficient, reliable and safe transportation system for this region's businesses and residents.

Metro does this through the [Regional Transportation Plan](#) (RTP), a report we update every four years with prioritized programs and projects. The RTP also allows us to compete for state and federal funding to invest in transportation projects and maintenance.

Shortly after the new year, Metro will identify how much the public is willing to invest, then strategically prioritize and balance

capital projects with ongoing operations and maintenance needs.

Because money is limited, the Council hopes to pursue transportation investments that take advantage of existing – or encourage new – urbanized areas with efficient housing and commercial development, and provide people with more choices of how to get around. This discourages sprawl that requires vastly more expensive transportation needs.

The Metro Council will develop the RTP along with the Joint Policy Advisory Committee on Transportation (JPACT), a 17-member committee of elected officials and representatives of agencies involved in transportation. The final RTP will be adopted jointly by JPACT and the Metro Council in early 2008, and then must be approved by the federal government.

Second round of Nature in Neighborhoods grants closing soon

The pre-application phase for grants through the second round of Metro's [Nature in Neighborhoods](#) program is coming to a close. Interested citizen groups, businesses, non-profit organizations, school groups, neighborhoods, government agencies and service organizations must submit their applications by January 18.

Projects must be within the jurisdictional boundary of Metro and focused on watershed restoration and community building through hands-on restoration, education and outreach.

Applicants are required to provide a level of match depending on the amount of their request. To obtain a copy of the pre-application, go to www.metro-region.org and click on the Nature in Neighborhood logo. Interested parties can also contact Janelle Geddes at geddesj@metro.dst.or.us or at (503) 797-1550.

600 attend I-5 to 99W Connector open houses

More than 600 people recently attended one of three I-5 to Highway 99W Connector project open houses. Metro, Washington County and the Oregon Department of Transportation are leading the project in cooperation with the cities of Sherwood, Wilsonville and Tualatin; Clackamas County; and the Federal Highway Administration.

Each meeting included a PowerPoint presentation and displays about the connector process, schedule, physical and environmental constraints, cultural resources, existing traffic and year 2030 baseline traffic. Information from the open houses may be seen at the project web site located at www.i5to99w.org. For a copy of the PowerPoint, please call (503) 595-9915 or send e-mail to info@i5to99w.org.

At the open houses, participants shared their ideas regarding possible solutions to the transportation challenges in the project area. Ideas gathered from the Stakeholder Working Group (comprised of citizens) and the Executive Management Team (senior project staff) were displayed and the public's comments about these ideas were also solicited.

Next steps will include review of the many citizen maps and comments as well as

creation of a summary report. The complete list of alternatives will be reduced – during a public process – to a workable number that should represent a reasonable range of transportation choices. Additional public participation opportunities will be provided before the number of alternatives is reduced. Future project and public participation updates will be provided in this newsletter.

Events of note in District 1

Fundamentals of tracking at Oxbow Park 9 a.m.-12 p.m. Saturday, Jan. 6

Learn the basics of human, pet and wildlife tracking with Metro naturalist John Halsell. Suitable for adults and teens. Registration and \$8 fee required in advance. \$4 per vehicle entry fee payable at the gate. Call (503) 797-1715.

8-10 a.m. Thursday, Jan. 11 Green From the Ground Up seminar series for land-savvy developers and builders Gresham City Hall council chamber 1333 NW Eastman Parkway

Professional engineer Tom Puttman will discuss low-impact practices feasible for your site, such as green streets, eco-roofs, and stormwater planters. Marketing experts Steve Kokes and Leslie Carlson will discuss strategies for marketing green developments, and Gail Shaloum, Metro landscape architect, will provide an overview of habitat-friendly practices and the latest information on permits and codes. \$10. Advance registration required; register online at www.metro-region.org or call Sandy at (503) 797-1850.

9 a.m.-12 p.m. Sunday Jan. 28

Dirt time at Oxbow Park
"Dirt time" means time spent practicing animal tracking. Join regional expert trackers and gain experience identifying and interpreting the subtle and complex clues left by wildlife. Please note, this is not a class, but an informal practice session. Meet at the floodplain parking lot at Oxbow Regional Park. All ages and skill levels are welcome. Free with \$4 per vehicle entry fee to the park. Advance registration not required.

Councilor Rod Park contact information

Address	600 NE Grand Ave. Portland, OR 97232
Phone	(503) 797-1547
Fax	(503) 797-1793
E-Mail	parkr@metro.dst.or.us
Assistant	Kathryn Sofich
Phone	(503) 797-1941
E-Mail	sofichk@metro.dst.or.us
Web	www.metro-region.org

About Metro

Clean air and clean water do not stop at city limits or county lines. Neither does the need for jobs, a thriving economy and good transportation choices for people and businesses in our region. Voters have asked Metro to help with the challenges that cross those lines and affect the 25 cities and three counties in the Portland metropolitan area.

A regional approach simply makes sense when it comes to protecting open space, caring for parks, planning for the best use of land, managing garbage disposal and increasing recycling. Metro oversees world-class facilities such as the Oregon Zoo, which contributes to conservation and education, and the Oregon Convention Center, which benefits the region's economy.

Your Metro representatives

Metro Council President
David Bragdon

Metro Councilors
Rod Park, District 1
Brian Newman, District 2
Carl Hosticka, District 3
Kathryn Harrington, District 4
Rex Burkholder, District 5
Robert Liberty, District 6

Auditor
Suzanne Flynn

January 2007 dch/final
Printed on recycled paper