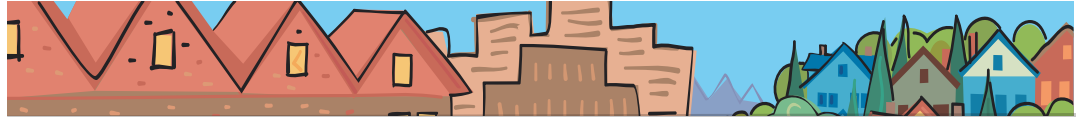


Kathryn Harrington

METRO COUNCIL DISTRICT 4 NEWS



METRO

PEOPLE PLACES
OPEN SPACES

Kathryn Harrington represents District 4, which includes Northern Washington County, Cornelius, Hillsboro, Forest Grove, Northwest Beaverton, Aloha, Rock Creek, Bonny Slope, Bethany, Raleigh Hills, West Slope, Cedar Mill and Cedar Hills.



A balanced transportation system includes road improvements

As our region grows we are all experiencing increased traffic congestion. This affects our personal lives, our commutes to work, the movement of freight, and the financial success of our businesses. Metro recognizes this problem, and as the lead agency responsible for regional transportation planning, is working to address it.

Transportation planning is perhaps one of the most important components of a vital, successful working region. Our regional economy, as well as our quality of life, depends on the improvements we make to our transportation system.

Funding transportation improvements, however, is a challenge. Federal and state agencies are telling us that the money we have been used to getting over the years no longer exists. City, county and state experts say that they don't have enough funding for maintenance. This means that we must be smarter and more efficient with the money we do have, making fiscally responsible and targeted investments in roads, highways, and public transit. We will not be able to build the future with past spending models and yesterday's solutions. Instead, we will need to exercise leadership for developing new funding sources, while still working hard to get our share of existing funding streams.

Metro is currently updating the Regional Transportation Plan to shape planning that serves the livability of our communities. We are focusing our planning and advocacy work on achieving a safe and environmentally sound transportation system that supports economic prosperity. As part of the plan update and in an effort to be responsive to the needs of residents, we recently conducted a public opinion survey on transportation planning (see related article). The new version of our plan incorporates the findings of this survey and provides a more balanced approach to transportation planning – planning that serves everyone.

As part of that balanced approach, we support improvements to and expansions of the road network. We understand that driving will continue to be a necessary mode of transportation for many Washington County residents.

The decisions we make now on our Regional Transportation Plan will affect our region for years to come, and we especially encourage you to provide feedback. That will help us as we plan for a safe, environmentally responsible transportation system that includes roads, supports economic success and – most importantly – supports you.

— Kathryn Harrington, together with Councilor Carl Hosticka

Tune into the Regional Transportation Plan Update Top 10

Transportation. What does that mean to you? More important, why should you care about it?

Transportation is more than just getting around in your car, fighting traffic and searching for parking spaces. Transportation affects

us all. Without an adequate transportation system, our region and economy suffer.

Our region is growing. As more families are formed, and more people move into the region, we face a need to take a new look at our land use and transportation planning. Metro is currently updating the Regional

continued

RTP Update

continued from page 1

Transportation Plan (RTP) and wants you to understand the challenges we all face.

To help in that process, Metro has developed a list titled “Ten things you need to know about the region’s transportation system.”

Metro is currently working closely with regional partners to refine the policies that will guide the RTP toward the economic, environmental and livability goals that stakeholders and the people of the region have said they want. To stay abreast of developments, and to find the list of the “Ten things you need to know about the region’s transportation system,” visit the RTP section of the Metro website at www.metro-region.org/rtp and click on “2035 Regional Transportation Plan update.”

Public opinion survey helps shape Regional Transportation Plan

As part of the development of the Regional Transportation Plan (RTP) Metro conducted a survey, speaking with 600 people living within the Metro boundary.

We found that respondents clearly recognize that a good transportation system is important in maintaining a strong local economy. With regard to transportation planning, residents place significant importance on protecting air quality, increasing safety, protecting fish habitat, meeting the needs of people of all ages, abilities and income levels, and making sure the system is balanced.

When asked to describe how balance should occur, better/more roads, improved public transit, extended light rail, improved highways/freeways and improved traffic were mentioned most often. When combining responses into broader categories, 43 percent of respondents mention alternative transportation, compared to 27 percent who mention improvements to roads and highways.

A wide majority favors maintaining existing roads before spending additional money on new ones – 72 percent agreed that “before we spend any money on building new roads and highways, our existing ones must be adequately

maintained,” while just 21 percent agreed that “our population is growing so fast that we must build new roads and highways, even if that means we can’t adequately maintain our existing ones.”

The research also shows that people are making decisions on where to work and send kids to school based on commute time. They also recognize the value of investing in alternative transportation modes that help encourage more complete communities.

There is also strong evidence that residents are making a direct connection between air pollution and driving vehicles, as more than four in ten respondents offered a solution to air quality problems that pertains to fuel, emissions and reduced traffic.

Metro has listened to residents’ concerns and has carefully considered them in the RTP. For more information about the survey or the RTP, visit the Metro website at www.metro-region.org/rtp and click on “2035 Regional Transportation Plan update.”

Hazardous waste collection Saturday, March 10

9 a.m. to 2 p.m. Saturday, March 10
Hazardous waste collection event
Forest Grove Transfer Station, 1525 B Street
(other events weekly through November 2007)

Dispose of your household’s toxic trash and learn about safer alternatives at Metro’s free household hazardous waste collection events. The roundups take place from 9 a.m. to 2 p.m. every week (except Memorial Day, Fourth of July and Labor Day weekends) through mid-November across the Portland tri-county area. A complete listing is available on Metro’s online calendar at www.metro-region.org.

Councilor Kathryn Harrington contact information

| | |
|-----------|--|
| Address | 600 NE Grand Ave. Portland, OR 97232 |
| Phone | (503) 797-1553 |
| Fax | (503) 797-1793 |
| E-mail | harringtonk@metro.dst.or.us |
| Assistant | Linnea Nelson |
| Phone | (503) 797-1886 |
| E-mail | nelsonl@metro.dst.or.us |
| Web | www.metro-region.org |

About Metro

Clean air and clean water do not stop at city limits or county lines. Neither does the need for jobs, a thriving economy and good transportation choices for people and businesses in our region. Voters have asked Metro to help with the challenges that cross those lines and affect the 25 cities and three counties in the Portland metropolitan area.

A regional approach simply makes sense when it comes to protecting open space, caring for parks, planning for the best use of land, managing garbage disposal and increasing recycling. Metro oversees world-class facilities such as the Oregon Zoo, which contributes to conservation and education, and the Oregon Convention Center, which benefits the region’s economy.

Your Metro representatives

Metro Council President
David Bragdon

Metro Councilors
Rod Park, District 1
Brian Newman, District 2
Carl Hosticka, District 3
Kathryn Harrington, District 4
Rex Burkholder, District 5
Robert Liberty, District 6

Auditor
Suzanne Flynn

March 2007 dch/final
Printed on recycled paper