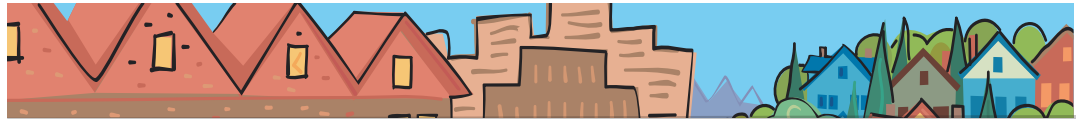


# Rod Park

## METRO COUNCIL DISTRICT 1 NEWS



**METRO**

PEOPLE PLACES  
OPEN SPACES

Rod Park represents District 1, which includes Fairview, Gresham, Happy Valley, Maywood Park, Troutdale, Wood Village, Damascus and portions of East Portland.



### A message from Rod Park

With the weather getting nicer, it's time to get out and enjoy the trails in the metro region. I'm excited to announce that next month, on June 2nd, which happens to be National Trails Day, I will be part of a community event dedicating a portion of the Gresham to Fairview Trail. The preliminary engineering and construction were funded through Metro.

This event will dedicate the portion connecting the Springwater Trail at Linneman Junction with the eastside MAX light-rail line at Ruby Junction. Planned expansion of the trail will continue north to Blue Lake Regional Park, ending at the Columbia River and connecting to the existing Lewis and Clark Discovery Greenway Trail (part of the 40-Mile Loop) along Marine Drive. For more info, go to [www.ci.gresham.or.us/departments/des/parksandrec/GF\\_masterplan/toc1.htm](http://www.ci.gresham.or.us/departments/des/parksandrec/GF_masterplan/toc1.htm).

This fully accessible trail provides opportunities to walk and bike. You could even be ambitious and go all the way to downtown Portland. A section of the Springwater Trail was just completed last fall and includes three bridges constructed over busy intersections and heavy rail lines, connecting the communities of Sellwood and Milwaukie. The completion of the Three Bridges project is being celebrated on May 19th. For information on Three Bridges, see [www.portlandonline.com/parks/index.cfm?c=43304](http://www.portlandonline.com/parks/index.cfm?c=43304). I encourage you to get out on these trails and enjoy the spring weather.

— Rod Park

### Metro to host open house meetings on natural areas

In June, residents of the region are invited to attend any of eight open houses and a virtual (online) open house to learn more about the 27 target areas Metro plans to purchase with funds from its 2006 natural areas bond measure. Residents will have an opportunity learn about the areas targeted for purchase, ask questions and provide their input on what they feel the highest priorities for Metro's land acquisition plans should be in each area.

Staff and consultants have been working since January to gather information, commission studies, review plans and interview stakeholders knowledgeable about the natural resources the bond measure is designed to protect. They are currently narrowing each target area and will present information to Council at work sessions through May.

In addition to the June open houses, a "virtual" open house will also be offered on Metro's website beginning June 12 for those not able to attend a meeting. Readers can view maps, review information, and complete a questionnaire ranking priorities and tradeoffs for each target area.

In July the Council will deliberate and review public input, and in August and September will be adopted by resolution refinement plans for each of the target areas including tax lot specific maps that will guide negotiators about which land owners to contact and in what priority order.

To confirm meeting information (or to see a full list), visit [www.metro-region.org/naturalareas](http://www.metro-region.org/naturalareas).

*continued*

## Natural areas open houses

*continued from page 1*

**June 21, 6-8 p.m., Gresham City Hall**

**Host: Metro Councilor Rod Park**

Regional target areas featured:

- Sandy River Gorge
- Johnson Creek
- Gresham to Fairview Trail

**June 25, 6-8 p.m. Boring Grange Hall,**

**Hosts: Metro Councilors Rod Park and Brian Newman**

Regional target areas featured:

- East Buttes (includes Damascus buttes, Scouter Mountain and Mt. Talbert)
- Clackamas River Bluffs and Greenway
- Deep Creek and Tributaries
- Clear Creek
- Cazadero Trail

**June 26, 6 to 8 p.m., Forest Grove**

**Community Auditorium, 1915 Main St.**

**Hosts: Metro Councilors Rod Park and Kathryn Harrington**

Regional target areas featured:

- Killin Wetland
- Dairy and McKay Creeks
- Gales Creek
- Chehalem Ridgetop to Refuge
- Wapato Lake
- Council Creek

## Oregon Zoo hosts fun, family-oriented events in May

Spring has sprung, and it's time to get outside to enjoy some of the fun events at our Oregon Zoo. Enjoy a brunch on Mother's Day, a day-long event called Celebrating Wildflowers, Bear Fair and even a visit from Spider-Man!

Treat mom to the Zoo's Mother's Day Brunch Sunday, May 13 at the Cascade Crest Banquet Center. The event is so popular that we recommend reservations. Call (503) 525-4299 to reserve a spot from 9 a.m. to 1 p.m.

If you've already got plans for Mother's Day, then consider visiting the zoo on Saturday, May 12, when Marvel Comic's Spider-Man swings by for autographs and photos to help kick off the zoo's summer of Backyard Habitat activities. One of those activities is "Celebrating Wildflowers," which takes place on the same day. Both events are free with zoo admission.

At Bear Fair on Saturday, May 19, everyone is invited to bring their teddy bear or other stuffed buddies to visit the zoo's bear exhibits and activity stations. Activities

include a Repair-A-Bear vet station, games, storytelling and a Teddy Bear Picnic. Free with zoo admission.

For more information on these and other events, call the zoo at (503) 226-1561.

## Metro co-hosts 2007 economic development speaker series

The Metro Economic Development Speaker Series brings to the region some of the leading economic development thinkers in the United States. Speakers offer their insights into the national and global forces affecting regional competitiveness and provide counsel for business and government leaders and the residents of the Portland metropolitan region. This year's series is presented in partnership with Portland State University's School of Business Administration and the Oregon Environmental Council.

The series includes a diversity of viewpoints and expertise designed to challenge the region's residents and leaders to rise to new levels of thinking about the region's economy, the market dynamics affecting our global competitiveness and the strategies required to position us for success.

**7:45 a.m. Thursday, May 31**  
**Multnomah Athletic Club, 1849 SW**  
**Salmon, Portland**

**"Quality of Life: Creating a Globally**  
**Competitive Regional Economy"**

Bob Yaro, Regional Planning Association, will speak on the role that quality of life plays in creating a globally competitive regional economy and the potential to work with other Northwest cities as a "mega-region" to capitalize on the quality of life niche. Continental breakfast begins at 7:15 a.m., presentation takes place from 7:45-9 a.m. Free; register at [www.foundation.pdx.edu/busbriefings](http://www.foundation.pdx.edu/busbriefings) or call (503) 725-4763.

## Councilor Rod Park contact information

Address	600 NE Grand Ave. Portland, OR 97232
Phone	(503) 797-1547
Fax	(503) 797-1793
E-Mail	<a href="mailto:parkr@metro.dst.or.us">parkr@metro.dst.or.us</a>
Assistant	Kathryn Sofich
Phone	(503) 797-1941
E-Mail	<a href="mailto:sofich@metro.dst.or.us">sofich@metro.dst.or.us</a>
Web	<a href="http://www.metro-region.org">www.metro-region.org</a>

## About Metro

Clean air and clean water do not stop at city limits or county lines. Neither does the need for jobs, a thriving economy and good transportation choices for people and businesses in our region. Voters have asked Metro to help with the challenges that cross those lines and affect the 25 cities and three counties in the Portland metropolitan area.

A regional approach simply makes sense when it comes to protecting open space, caring for parks, planning for the best use of land, managing garbage disposal and increasing recycling. Metro oversees world-class facilities such as the Oregon Zoo, which contributes to conservation and education, and the Oregon Convention Center, which benefits the region's economy.

## Your Metro representatives

Metro Council President  
David Bragdon

Metro Councilors  
Rod Park, District 1  
Brian Newman, District 2  
Carl Hosticka, District 3  
Kathryn Harrington, District 4  
Rex Burkholder, District 5  
Robert Liberty, District 6

Auditor  
Suzanne Flynn

May 2007 dch/final  
*Printed on recycled paper*