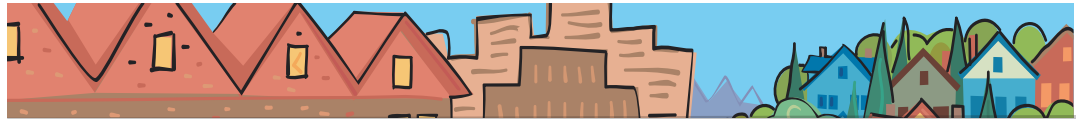


Brian Newman

METRO COUNCIL DISTRICT 2 NEWS



METRO

PEOPLE PLACES
OPEN SPACES

Brian Newman represents District 2, which includes a portion of Southwest Portland and much of urban Clackamas County including Gladstone, Johnson City, Lake Oswego, Milwaukie, Oak Grove, Oregon City, Rivergrove and West Linn.

Three Bridges opens on Springwater Trail

Join us Saturday, May 19 from 9 a.m. to 1 p.m. for the grand opening of the Three Bridges section of the Springwater Trail. The new section connects Portland to Milwaukie via bridges over McLoughlin Boulevard, the Union Pacific Railroad and Johnson Creek.

Opening day festivities will offer a variety of fun activities, including bike demos, hands-on environmental education, bike helmet decorating and learning from design team members how the bridges were built. The 1.5-mile celebration route is an easy bike ride or walk, with little or no elevation gain. Activities and demonstrations will be held at four designated points along the trail—SE 19th Avenue and Ochoco in Sellwood, the Three Bridges area at SE 28th Avenue and Sherrette, the Tideman Johnson Natural Area, and the Johnson Creek Trailhead at SE 45th and Johnson Creek Boulevard.

Thanks to the City of Portland's Parks & Recreation Department, Office of Transportation and Bureau of Environmental Services, the City of Milwaukie, SMILE and the Ardenwald Johnson Creek Neighborhood Association for co-hosting the celebration with Metro.

Oregon Zoo hosts fun, family-oriented events in May

Spring has sprung, and it's time to get outside to enjoy some of the fun events at our Oregon Zoo.

Treat mom to the Zoo's Mother's Day Brunch Sunday, May 13 at the Cascade Crest Banquet Center. The event is so popular that we recommend reservations. Call (503) 525-4299 to reserve a spot from 9 a.m. to 1 p.m.

If you already have plans for Mother's Day, consider visiting the zoo on Saturday, May 12, when Marvel Comic's Spider-Man swings by for autographs and photos to help kick off the zoo's summer of Backyard Habitat activities. One of those activities, "Celebrating Wildflowers," takes place on the same day. Learn how plants in your own backyard are beneficial for animals and help the zoo plant some habitat for the birds, insects, squirrels and other animals that live there. Both events are free with zoo admission.

At Bear Fair on Saturday, May 19, everyone is invited to bring their teddy bear or other stuffed buddies to visit the zoo's bear



exhibits and activity stations. Activities include a Repair-A-Bear vet station, games, storytelling and a Teddy Bear Picnic. Free with zoo admission.

For more information on these and other events, call the zoo at (503) 226-1561.

Boat trips now offered at Smith and Bybee Wetlands

For the first time, Metro is offering boat trips at Smith and Bybee Wetlands for those who do not own a boat. The first of these outings is Sunday, May 6, 1 to 4 p.m.

Experiencing Smith and Bybee Wetlands from the water makes a unique excursion.

continued

Smith and Bybee boat trips

continued from page 1

Chances are good that you will see wildlife that is not easily seen walking on the trail. Metro naturalist James Davis and volunteers guide these small group trips, which are suitable for adults and families (children must be accompanied by an adult).

Some experience being in a canoe or kayak is helpful but not essential. If you own a boat and are interested in a guided paddle trip only, check out the trips offered by the Friends of Smith and Bybee Lakes. Because of the impact on wildlife, pets are not allowed in Metro's natural areas and parks.

The program fee ranges from \$25 to \$50, depending on the type of boat and the number of adults and children. The fee includes the boat, paddles and personal flotation devices. For more information, call (503) 797-1715; registration and payment are required in advance. For other trip dates, check Metro's calendar at calendar.metro-region.org.

Metro to host open house meetings on natural areas

In June, residents of the region are invited to attend any of eight open houses and a virtual (online) open house to learn more about the 27 target areas Metro plans to purchase with funds from its 2006 natural areas bond measure. Residents will have an opportunity learn about the areas targeted for purchase, ask questions and provide their input on what they feel the highest priorities for Metro's land acquisition plans should be in each area.

Staff and consultants have been working since January to gather information, commission studies, review plans and interview stakeholders knowledgeable about the natural resources the bond measure is designed to protect. They are currently narrowing each target area and will present information to the Council through May.

In addition to the June open houses, a "virtual" open house will also be offered on Metro's website beginning June 12 for those not able to attend a meeting. Readers can view maps, review information, and complete a questionnaire ranking priorities and tradeoffs for each target area.

In July the Council will deliberate and review public input, and in August and September will adopt refinement plans for each of the target areas including tax lot specific maps that will guide negotiators about which land owners to contact and in what priority order.

At press time, the June open house meetings are planned, but may be subject to change. To confirm meeting information (or to see a full list) visit www.metro-region.org/naturalareas.

June 13, 6:30-8:30 p.m.

Metro Regional Center

Host: Metro Councilor Robert Liberty

Regional target areas featured:

- Johnson Creek and Watershed
- Tryon Creek Linkages
- Springwater Corridor
- Willamette River Greenway
- Fanno Creek Linkages

June 18, 6-8 p.m.

Athey Creek Middle School

2900 SW Borland Rd., West Linn

Host: Metro Councilor Brian Newman

Regional target areas featured:

- Tryon Creek Linkages
- Stafford Basin
- Willamette Narrows
- Canemah Bluff
- Abernethy and Newell Creeks

June 25, 6-8 p.m.

Boring Grange Hall

Host: Metro Councilor Brian Newman

Regional target areas featured:

- East Buttes (includes Damascus buttes, Scouter Mountain and Mt. Talbert)
- Clackamas River Bluffs and Greenway
- Deep Creek and Tributaries
- Clear Creek
- Cazadero Trail

Councilor Brian Newman contact information

Address	600 NE Grand Ave. Portland, OR 97232
Phone	(503) 797-1887
Fax	(503) 797-1793
E-mail	newmanb@metro.dst.or.us
Assistant	Amelia Porterfield
Phone	(503) 797-1543
E-mail	porterfielda@metro.dst.or.us
Web	www.metro-region.org

About Metro

Clean air and clean water do not stop at city limits or county lines. Neither does the need for jobs, a thriving economy and good transportation choices for people and businesses in our region. Voters have asked Metro to help with the challenges that cross those lines and affect the 25 cities and three counties in the Portland metropolitan area.

A regional approach simply makes sense when it comes to protecting open space, caring for parks, planning for the best use of land, managing garbage disposal and increasing recycling. Metro oversees world-class facilities such as the Oregon Zoo, which contributes to conservation and education, and the Oregon Convention Center, which benefits the region's economy.

Your Metro representatives

Metro Council President
David Bragdon

Metro Councilors
Rod Park, District 1
Brian Newman, District 2
Carl Hosticka, District 3
Kathryn Harrington, District 4
Rex Burkholder, District 5
Robert Liberty, District 6

Auditor
Suzanne Flynn

May 2007 dch/final

Printed on recycled paper