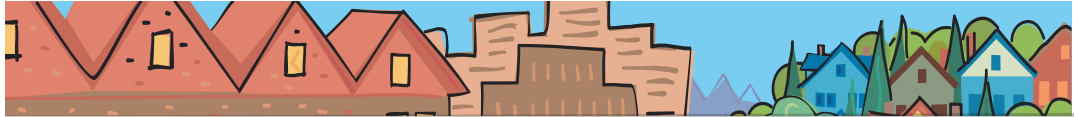


Rex Burkholder

METRO COUNCIL DISTRICT 5 NEWS



METRO

PEOPLE PLACES
OPEN SPACES

Rex Burkholder represents District 5, which includes Northwest Portland, North Portland, Northeast Portland, downtown Portland, a portion of Southwest Portland and a portion of Southeast Portland.

A message from Rex Burkholder

The balmy days of Spring are here and the thoughts of young (and old) men (and women) turn to... Bicycles! While there are many who brave the rain and murk to bike to work year round, a lot of us need sun and warmer days to pull out the bike. May is [National Bike Month](#) and there are a number of activities happening around town. Bike to Work week is May 15-18 and two events are happening in District 5. On Wednesday May 17 the [City of Portland's Transportation Options Office](#) is offering free breakfast to all cyclists at Pioneer Courthouse Square downtown. On May 18 [Lloyd TMA](#) is celebrating [Bike Commute Day](#) at Oregon Square in the Lloyd District. Grab a coffee and muffin and chat with your fellow bike commuters.

Bike events of many kinds and levels of adventure are listed on these websites. Nature oriented rides can be found in Metro's [GreenScene](#). [SHIFT](#) offers the fun and unique, with [PedalPalooza's](#) participatory planning going on right now. The City of Portland is offering regular rides from the geeky ([Bicycle Master Plan](#) ride) to the sisterly ([Women's rides](#)). If you are the athletic kind, check out the [Bike Gallery](#) and [Portland Wheelmen](#) rides. Remember, just bike it!

Other events this month include the [Grand Opening of the Springwater Bridges](#) on May 19th. Getting funding for these bridges was one of my first sweet successes when I came on the Council six years ago. There is only about one mile of trail left to construct and then people will be able to ride or walk from downtown Portland to downtown Gresham and beyond without ever going on a road. For more details about this event, read the story below.

I'm thinking about bikes a lot for two other reasons. The first is that I bought my first new road bike in 30 years, a [Trek Portland](#). My son had left his road bike at home when he went back to university last fall and after a couple of rides I was hooked on the beauty and ease of gliding along the Marine Drive and Springwater bike paths. What fun!



In April, I was invited to Guadalajara, Mexico to speak to representatives from over 20 cities in Latin America who were promoting bicycles as transportation and recreation in their communities (www.ciudadhumana.org/cicloviasunidas). Like here in the US, high oil prices, air pollution and climate change are big problems in Latin America and many cities and countries see the bicycle as an elegant solution—one that is affordable, convenient and clean. I spoke to them about the work we have done here to make bicycling more attractive by providing space on the roads, parking at destinations, promotion programs *continued*

A message from Rex

continued from page 1

and pathways. Our growing numbers of commuting cyclists impressed them a lot but I was blown away by Guadalajara's Via RecreActiva. Every Sunday, about 12 miles of major arterials are closed to traffic. Over 100,000 people bike, stroll, rollerblade and skateboard from one end of the city to the other. The daily newspaper, El Informador, provides 500 bikes as loaners. We had quite a time (as you can see from the picture!).

For more pictures and to hear me interviewed about my experience, check out bikeportland.org/2007/05/04/ciclovias-and-lowriders-an-interview-with-rex-burkholder/. And thanks to Jonathan for interviewing me.

See you on the bikeway!

— Rex Burkholder

Metro to host open house meetings on natural areas

In June, residents of the region are invited to attend any of eight open houses and a virtual (online) open house to learn more about the 27 target areas Metro plans to purchase with funds from its 2006 natural areas bond measure. Residents will have an opportunity learn about the areas targeted for purchase, ask questions and provide their input on what they feel the highest priorities for Metro's land acquisition plans should be in each area.

Staff and consultants have been working since January to gather information, commission studies, review plans and interview stakeholders knowledgeable about the natural resources the bond measure is designed to protect. They are currently narrowing each target area and will present information to Council at work sessions through May.

In addition to the June open houses, a "virtual" open house will be offered on Metro's website beginning June 12 for those not able to attend a meeting. Readers can view maps, review information, and complete a questionnaire ranking priorities and tradeoffs for each target area.

In July the Council will deliberate and review public input, and in August and September will adopt by resolution refinement plans for each of the target areas including tax lot specific maps that will guide negotiators about which land owners to contact and in what priority order.

To confirm meeting information, visit . The full list and details are below. Please note the open houses for District 5 areas are taking place on June 12 and June 20.

**June 12, 6-8 p.m., PCC Rock Creek
17705 NW Springville Rd., Portland**

Hosts: Metro Councilors Rex Burkholder and Kathryn Harrington

Regional target areas featured:

- Forest Park
- Rock Creek Headwaters and Greenway
- Westside Trail

June 13, 6:30-8:30 p.m., Metro Regional Center

Host: Metro Councilor Robert Liberty

Regional target areas featured:

- Johnson Creek and Watershed
- Tryon Creek Linkages
- Springwater Corridor
- Willamette River Greenway
- Fanno Creek Linkages

June 14, 6 to 8 p.m., Tualatin Hills Park and Recreation District Nature Park

15655 SW Millikan Blvd., Beaverton

Host: Metro Councilor Carl Hosticka

Regional target areas featured:

- Cooper Mountain
- Tualatin River Greenway
- Lower Tualatin Headwaters
- Tonquin Geologic Area and Trail
- Fanno Creek Linkages
- Westside Trail

**June 18, 6 to 8 p.m., Athey Creek Middle School
2900 SW Borland Rd., West Linn**

Regional target areas featured:

- Tryon Creek Linkages
- Stafford Basin
- Willamette Narrows
- Canemah Bluff
- Abernethy and Newell Creeks

June 25, 6-8 p.m., Boring Grange Hall

Hosts: Metro Councilors Rod Park and Brian Newman

Regional target areas featured:

- East Buttes (includes Damascus buttes, Scouter Mountain and Mt. Talbert)
- Clackamas River Bluffs and Greenway
- Deep Creek and Tributaries
- Clear Creek
- Cazadero Trail

**June 20, 6-8 p.m., St. John's Community Center
8427 N. Central St., Portland**

Host: Metro Councilor Rex Burkholder

Regional target areas featured:

- Columbia Slough
- Willamette River Greenway
- Forest Park Connections

continued

Natural area open houses

continued from page 2

June 21, 6-8 p.m., Gresham City Hall

Host: Metro Councilor Rod Park

Regional target areas featured:

- Sandy River Gorge
- Johnson Creek
- Gresham to Fairview Trail

June 26, 6 to 8 p.m., Forest Grove Community

Auditorium, 1915 Main St.

Hosts: Metro Councilors Kathryn Harrington and Rod Park

Regional target areas featured:

- Killin Wetland
- Dairy and McKay Creeks
- Gales Creek
- Chehalem Ridgetop to Refuge
- Wapato Lake
- Council Creek



Oregon Zoo hosts fun, family-oriented events in May

Spring has sprung, and it's time to get outside to enjoy some of the [fun events](#) at our [Oregon Zoo](#). Enjoy a brunch on Mother's Day, a day-long event called Celebrating Wildflowers, Bear Fair and even a visit from Spider-Man!

Treat mom to the Zoo's Mother's Day Brunch Sunday, May 13 at the Cascade Crest Banquet Center. The event is so popular that we recommend reservations. Call (503) 525-4299 to reserve a spot from 9 a.m. to 1 p.m.

If you've already got plans for Mother's Day, then consider visiting the zoo on Saturday, May 12, when Marvel Comic's Spider-Man swings by for autographs and photos to help kick off the zoo's summer of Backyard Habitat activities. One of those activities is "Celebrating Wildflowers," which takes place on the same day. Learn how plants in your own backyard are

beneficial for animals, and help the zoo plant some habitat for all of the birds, insects, squirrels and other animals that live there. Both events are free with zoo admission.

At Bear Fair on Saturday, May 19, everyone is invited to bring their teddy bear or other stuffed buddies to visit the zoo's bear exhibits and activity stations. Activities include a Repair-A-Bear vet station, games, storytelling and a Teddy Bear Picnic. Free with zoo admission.

For more information on these and other events, call the zoo at (503) 226-1561.

Three Bridges open on Springwater Trail

Join us on Saturday, May 19 from 9 a.m. to 1 p.m. for the grand opening of the [Three Bridges](#) section of the [Springwater Trail](#). The new section connects Portland to Milwaukie via bridges over McLoughlin Boulevard, the Union Pacific Railroad and Johnson Creek.

The bridge over McLoughlin Blvd., referred to as the "signature" or "gateway" bridge, is a relatively rare type of bridge, referred to as an inclined arch. The bright orange structure welcomes users to the city of Milwaukie, and connects the city to Sellwood and neighboring communities.

The 1.5 mile celebration route is an easy bike ride or walk, with little or no elevation gain. Activities and demonstrations will be held at four designated points along the trail--SE 19th Avenue and Ochoco in Sellwood, the Three Bridges area at SE 28th Avenue and Sherrette, the Tideman Johnson Natural Area and at the Johnson Creek Trailhead at SE 45th and Johnson Creek Boulevard.

Opening day festivities will offer a variety of fun, including bike demos, hands-on environmental education, bike helmet decorating and learning from design team members how the bridges were built. In addition, performers, including the popular Sprockettes cycling team and the 15-piece Encore Brass band will entertain at the 45th and Johnson Creek Trailhead location.

The Springwater Corridor Trail, nearly 20 years in the making, extends 17 miles from SW 4th & Ivon St. (near the Oregon Museum of Science and Industry) east to the city of Boring. The paved trail is built along a former rail line, which was first used in the early 1900s for logging operations in Estacada and later as a commuter trolley.

Hosting the celebration are Metro, the city of Portland's Parks & Recreation Department, Office of Transportation and Bureau of Environmental Services, the city of Milwaukie, SMILE and the Ardenwald Johnson Creek Neighborhood Association.

Events of note in District 5

For a complete list of events, check out our online calendar at calendar.metro-region.org.

Saturday, May 12, 2007, 9:30 a.m.

Animal tracking practice, Smith and Bybee Wetlands

Metro volunteer naturalist and experienced tracker John Halsell is starting a new, monthly tracking program at Smith and Bybee Wetlands in North Portland on the second Saturday of each month. Metro's 2,000-acre Smith and Bybee Wetlands offers tracking on sand, mud, trees and the forest floor. It is an outstanding place to find evidence of a variety of urban wildlife including beaver, deer, coyote, raccoon and rabbits. At each program John will focus on what is happening that week and cover different topics in the ancient art of using tracks and sign to know who has been around and what they have been doing. Most of the time will be spent walking on sand or paved trail to find and discuss tracks and sign "in the wild." All skill levels are welcome; suitable for adults and teens. Meet in the parking area on North Marine Drive. Free. Advance registration required; call (503) 797-1715.

Saturday, May 12, 2007, 10:00 a.m.

Lone Fir Pioneer Cemetery tour

Embark on a unique history lesson while enjoying the beauty and tranquility of Metro's Lone Fir Pioneer Cemetery in Southeast Portland. The tour highlights Portland's founders, early pioneers and nationally-recognized figures, as well as interesting headstones and monuments. Explore 30 acres of mature trees and a very special rose garden. Suitable for all ages. Meet at the main entrance at Southeast 21st Avenue and Morrison Street. Advance registration not required. A suggested donation of \$10 goes to headstone restoration and educational programs. For more information, call (503) 775-6278.

Friday, May 18, 2007, 11:30 a.m.

Soup on the Slough, Whitaker Ponds Natural Area

You are invited for an informal soup lunch at Whitaker Ponds, a thriving natural area and environmental education center on the Columbia Slough that was once a junkyard. Enjoy a tour, meet slough neighbors and businesses and learn about watershed activities and events. Wear shoes for wet weather. Free. Advance registration required; call (503) 281-1132.

Saturday, May 19, 2007, 9:00 a.m.

Spring bird walk, Smith and Bybee Wetlands

Spring brings more than 25 different songbirds to join the resident birds nesting at Smith and Bybee. Linger in winter waterfowl and birds of prey add to the hot birding action at the

wetlands in spring. Meet Metro naturalist and expert birder James Davis in the parking lot on North Marine Drive. Learn to identify birds by sight and songs. Bring binoculars or borrow a pair of ours. Suitable for adults and children 10 and older. Free. Advance registration required; call (503) 797-1715.

Saturday, May 19, 2007, 1:00 p.m.

Painted turtle walk, Smith and Bybee Wetlands

Oregon's turtles are rare, shy and hard to find, but Smith and Bybee Wetlands Natural Area is home to one of the largest populations of Western painted turtles in the Northwest. See these beautiful reptiles with the help of Metro naturalist James Davis, who will have small telescopes for a close look. Learn about the natural history of painted turtles and why they are so rare. Suitable for adults and children 5 and older. Meet in the parking area on North Marine Drive. Free. Advance registration required; call (503) 797-1715.

Sunday, May 20, 2007, 12:00 p.m.

Smith and Bybee Wetlands paddle trip

Traveling by canoe or kayak is the best way to explore Smith and Bybee Wetlands Natural Area in North Portland. Meet at the parking lot on North Marine Drive. Bring your own kayak or canoe and personal flotation device. The new water control structure is helping to restore the natural area to a seasonal wetland. The changes are great for wildlife but they make paddle conditions difficult to predict. The trip leader will contact participants if it is necessary to cancel the trip due to low water levels. Advance registration required; call Troy Clark at (503) 249-0482 or send e-mail to brillobrain@ureach.com.

Wednesday, May 30, 2007, 6:00 p.m.

Canoe the Slough

Enjoy a calm evening paddle on the Columbia Slough in search of beaver, heron, osprey, red-tailed hawks and numerous songbirds. Experts will guide participants in canoe bimarans (two canoes lashed together) on two 40-minute trips. This is a great introductory paddle for the whole family. Free. Advance registration required; call (503) 281-1132.

About Metro

Clean air and clean water do not stop at city limits or county lines. Neither does the need for jobs, a thriving economy and good transportation choices for people and businesses in our region. Voters have asked Metro to help with the challenges that cross those lines and affect the 25 cities and three counties in the Portland metropolitan area.

A regional approach simply makes sense when it comes to protecting open space, caring for parks, planning for the best use of land, managing garbage disposal and increasing recycling. Metro oversees world-class facilities such as the Oregon Zoo, which contributes to conservation and education, and the Oregon Convention Center, which benefits the region's economy.

Your Metro representatives

Metro Council President
David Bragdon

Metro Councilors
Rod Park, District 1
Brian Newman, District 2
Carl Hosticka, District 3
Kathryn Harrington, District 4
Rex Burkholder, District 5
Robert Liberty, District 6

Auditor
Suzanne Flynn

Councilor Rex Burkholder contact information

Address	600 NE Grand Ave. Portland, OR 97232
Phone	(503) 797-1546
Fax	(503) 797-1793
E-Mail	burkholderr@metro.dst.or.us
Assistant	Kathryn Sofich
Phone	(503) 797-1941
E-Mail	sofichk@metro.dst.or.us
Web	www.metro-region.org

May 2007 dch/final

Printed on recycled paper