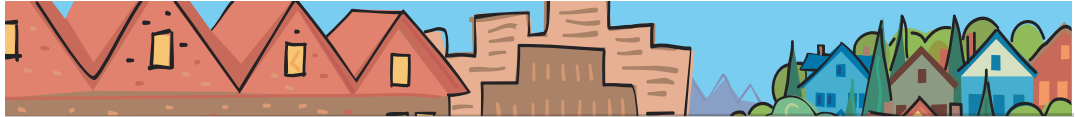


Rex Burkholder

METRO COUNCIL DISTRICT 5 NEWS



METRO

PEOPLE PLACES
OPEN SPACES

Rex Burkholder
represents District
5, which includes
Northwest Portland,
North Portland,
Northeast Portland,
downtown Portland,
a portion of
Southwest Portland
and a portion of
Southeast Portland.



A message from Rex Burkholder

Summer means fresh veggies. One of my favorite summertime activities is to visit the various farmers' markets in District 5. From the South Park Blocks to Hollywood to Overlook Park to Alberta Street, residents of District 5 have a large number of markets to choose from. The newest addition is the Lloyd Farmers Market, which will take place on Tuesdays from 2-6 at NE Holladay Street between 7th and 9th Avenues. A perfect stop as I ride my bike home from work!

The number of farmers' markets in the metro region is growing. Did you know there are new markets in Fairview and Oregon City? According to the [Oregon Farmers' Markets Association](#), in 2004, 64 communities within the state enjoyed the benefits of a farmers' market. Recent estimates indicate that more than 1,000 Oregon farmers participate in farmers' markets each year, and farmers' markets attract more than 90,000 people each week during the peak summer months. Many benefits result from a thriving farmers' markets community. For example, farmers' markets represent an opportunity to promote economic development by replacing out-of-state agricultural products with in-state products, transferring wealth from urban to rural communities in Oregon, and promoting increased commercial activity in central business districts.

The proliferation of these markets is possible as a result of Oregon's land use policies that place high importance on protecting farmland. Oregon's policy makers at the federal, state, and local level support preserving agricultural land. National data has confirmed that Oregon has converted much less farmland to development than other states. However, with the projected growth over the next 20 years, preserving this farmland will be a challenge.

At the federal level, [Congressman Earl Blumenauer](#) has introduced the "Local Food and Farm Act," which will strengthen the local farm economy, provide all Americans with better access to fresh, local food, and improve the quality of food served in our public schools. This bill will help Oregon's farmers, environment and economy by encouraging local farm production, supporting farmers' markets, and advancing programs to get local produce to families and seniors of modest means.

The [Oregon State legislature](#) recently passed Senate Bill 1011, which enables the creation of urban and rural reserve areas. This bill will allow Metro and local governments to set aside regions most suitable for growth over the next 40 to 50 years while protecting valuable farmland and natural areas from expansion and development for the same period of time. Metro worked hard with other regional partners to get this bill passed. You can read more about this bill in a story below.

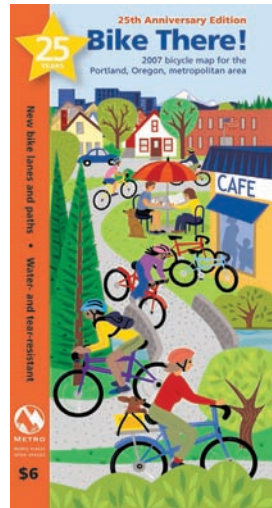
Working together, we can continue to preserve the valuable farmland throughout our region. And what better way to support local farmers than to visit one of the many farmers' markets around the region and state. A list of farmers' markets in Portland and the rest of the state can be found on the Oregon Farmers' Markets Association [webpage](#). Maybe I'll see you there!

— Rex Burkholder

Celebrating 25 years of Metro's Bike There! Map

A popular resource for cyclists in the region has recently been updated. Metro's [2007 Bike There! map](#) outlines bike lanes and bike paths throughout the entire metropolitan region.

Bike There! has guided cyclists through the region's streets, paths and bike lanes for 25 years. In recent years, the region has seen a large increase in bicycle use as both the availability of safe places to bike and the number of people biking have grown considerably. With each edition, the map gets better, thanks to the hundreds of cycling enthusiasts who have contributed route ratings and expert advice.



The 25th Anniversary Edition of Bike There!, updated in 2007, is a colorful, waterproof, easy-to-use guide to bicycle-friendly streets and bike paths around the Portland metropolitan region. The map rates specific through-streets where bicyclists share the road with motorists and color-codes those streets to show bicycle suitability. In addition, the map features large insets of downtown Portland and seven other cities in the region and uses shaded relief to illustrate hills, transit stations, parks, and other important destinations.

The map is available at several local retail outlets. Check Metro's website at www.metro-region.org/bikethere. For questions about bike routes and other map information, call Mary Ann Aschenbrenner at (503) 813-7566 or send e-mail to aschenbrenner@metro.dst.or.us.

Metro and partners succeed with land-use law reforms

Recently Metro, working closely with local governments, business leaders, agricultural interests and others, achieved passage of important legislation that will enable us to better plan for growth in the years ahead.

Metro is the only jurisdiction in the state that is required to review its urban growth boundary (UGB) every five years to make certain that it contains a 20-year supply of land to accommodate growth. Oregon HB 2051 provides Metro with a two-year delay—to 2009—to review and consider its current expansion.

Oregon SB 1011 enables the creation of urban and rural reserve areas, allowing Metro and local governments to set aside regions that may be suitable for growth over the next 40 to 50 years while protecting valuable farmland and natural areas from expansion and development for the same period of time.

The two bills provide greater flexibility for the development of vibrant communities within the existing urban growth boundary, while protecting resource land and natural areas outside the boundary. Rather than focusing on an arbitrary 20-year land supply requirement, Metro will make growth management decisions based on how efficiently land within the existing UGB is used. In addition, the ability to create reserve areas now provides greater predictability over how and where population and employment growth will or will not occur.

Once both bills are signed into law, Metro will work with its regional partners to develop a more flexible and comprehensive growth management process, with the goal of more effectively implementing the [2040 Growth Concept](#), the region's long-range growth management plan.

Metro Council appoints citizen committee to review Natural Areas Program

To ensure efficient administration of its [Natural Areas Program](#), the Metro Council has appointed an oversight committee of citizens from the region. Chaired by Peter Krainock, the 15-member Performance Oversight Committee will serve as an outside review to help Metro protect water, fish and wildlife in the region. The committee will meet twice annually with its first meeting planned for June.

"The composition of this committee demonstrates that we have successful business leaders in our region who care passionately about making the most of our natural settings and are willing to volunteer their time to constructively advise our government," said Metro Council President David Bragdon. "In forming this important committee, the Metro Council is keeping its promise to voters who passed the 2006 bond measure and providing accountability to all of our residents."

Committee members from a range of professional fields will work to ensure that expenditures from the bond measure are effective and efficient. The committee will review program performance and progress in implementing the strategies and objectives for natural area acquisition and protection.

The Metro Council's 2006 Natural Areas Program funds land acquisition and improvements that protect

continued

Natural areas oversight committee

continued from page 2

water quality and wildlife habitat, enhance trails and wildlife corridors, and provide greater connections to nature in neighborhoods throughout the metropolitan region. For more information call (503) 797-1741 or visit www.metro-region.org/naturalareas.

PSU graduate students riding across Oregon

Two graduate students in PSU's Masters in Urban and Regional Planning are embarking on a journey across Oregon. George Zaninovich and Mathew Berkow's goal is to engage in conversation with citizens about community, land use and Measure 37, documenting what they hear along the way. They are partnering with Oregon Public Broadcasting, which will run several segments throughout their trip. They have a website, www.landusestories.org, where you can read more about their project, see their route, and offer them support.

Let's Talk Trash

Are you concerned about protecting our environment? Is conserving natural resources important to you? Do you want to ensure we leave our children a healthy community?

Metro wants to hear your thoughts on a new ten-year plan for managing solid waste in the region. The [Regional Solid Waste Management Plan](#) (RSWMP) will ensure continued progress in reducing the amount and toxicity of the trash we generate, and will blaze new trails in advancing sustainable operations for the solid waste system.

Protecting our environment now and for future generations is a valued shared by residents of our region. During the past 20 years, Metro and its partners have established a comprehensive solid waste management system that includes disposal and recovery facilities, curbside services, household hazardous waste collection, a paint recycling operation, and reaching a regional recycling rate of 58.6 percent (one of the highest in the nation).

Despite these achievements, we continue to send more than 1.2 million tons of garbage to the landfill each year, half of which could be recycled.

Recycling is but one strategy to protect the environment. Making less garbage in the first place, avoiding the use of toxic products, and implementing sustainable business practices into solid waste operations are other strategies to be considered.

The new plan will set the direction for the solid waste system for the next decade, and will guide

continued progress in reducing the amount and toxicity of waste generated and disposed in the Metro region. It also outlines new initiatives to advance sustainable practices in operations of the solid waste system.

To read the plan and learn how to comment on the plan, go to www.metro-region.org/letstalktrash. If you would rather have a paper copy of the plan, please contact the Metro Solid Waste and Recycling Department at (503) 797-1650. This final stage of public involvement ends August 3; the Metro Council will hold a public hearing and will consider the plan for adoption in fall of this year.

Events of note in District 5

For a complete list of events, check out our online calendar at calendar.metro-region.org.

Saturday, July 7, 9:00 a.m.

Arbor Lodge Park work party

Help replace the use of pesticides with people power by weeding at this North Portland park. Snacks, gloves and tools will be provided. Please meet at North Bryant Street and Greeley Avenue. For more information, call Megan at (503) 423-7549.

Tuesday, July 10, 7:00 p.m.

Twilight Tuesday at Smith and Bybee Wetlands

This relaxing walk at Smith and Bybee Wetlands Natural Area takes advantage of long summer days and gives you a chance to unwind after work and see mammals such as beaver, muskrat, otter, raccoon, deer and bats. Metro naturalist James Davis teaches the basic techniques of wildlife watching and identification. Bring your binoculars or borrow a pair of ours. Suitable for adults and children age 10 and older; participants must be able to be quiet, sneaky and patient. Registration and payment of \$5 per adult are required in advance; call (503) 797-1715.

Saturday, July 14, 9:30 a.m.

Intermediate animal tracking practice at Smith and Bybee Wetlands

Metro volunteer naturalist and experienced tracker John Halsell leads a monthly tracking program on the second Saturday of each month at Smith and Bybee Wetlands. Practice the ancient art of tracking on sand, mud and the forest floor and find evidence of a variety of urban wildlife including beaver, deer, coyote, raccoon and rabbits. Participants will get the most from the class if they have previous tracking experience. This program is suitable for adults and teens. Please meet in the parking area on North Marine Drive. Free. Advance registration required; call (503) 797-1715.

Saturday, July 14, 10:00 a.m.

Aquatic ecology for kids

Explore the ins and outs of Balch Creek and find out why it is so important to the ecology of Forest Park. This program is suitable for age 6 and older. Wear good walking shoes and bring water and snacks. Free. Advance registration is required; call (503) 223-5449.

Saturday, July 14, 10:00 a.m.

Lone Fir Pioneer Cemetery tour

Embark on a unique history lesson while enjoying the beauty and tranquility of Metro's Lone Fir Pioneer Cemetery in Southeast Portland. The tour highlights Portland's founders, early pioneers and nationally recognized figures, as well as interesting headstones and monuments. This program is suitable for all ages. Meet at the main entrance at Southeast 21st Avenue and Morrison Street. A suggested donation of \$10 goes to headstone restoration and educational programs. For more information, call (503) 775-6278.

Sunday, July 15, 8:00 a.m.

Smith and Bybee Wetlands paddle trip

Traveling by canoe or kayak is the best way to explore Smith and Bybee Wetlands Natural Area in North Portland. Meet at the parking lot on North Marine Drive. Bring your own kayak or canoe and personal flotation device. The new water control structure is helping to restore the natural area to a seasonal wetland. The changes are great for wildlife but they make paddle conditions difficult to predict. The trip leader will contact participants if it is necessary to cancel the trip due to low water levels. Advance registration required; call Troy Clark at (503) 249-0482 or send e-mail to brillobrain@ureach.com.

Saturday, July 21, 9:00 a.m.

Summer bird watching at Smith and Bybee Wetlands

Join James Davis and other Metro naturalists for some great birding as the nesting season winds down at Smith and Bybee Wetlands Natural Area. See young birds that have left the nest and family activities such as feeding and flocking. Learn to identify the most common birds by their songs as well as their appearance. This program is suitable for adults and children 10 and older. Bring your binoculars or borrow a pair of ours. Meet in the parking area on North Marine Drive. Free. Advance registration required; call (503) 797-1715.

Saturday, July 21, 1:00 p.m.

Painted turtle walk at Smith and Bybee Wetlands

Oregon's turtles are rare, shy and hard to find, but Smith and Bybee Wetlands Natural Area is home to one of the largest populations of Western painted turtles in the Northwest. See these beautiful reptiles with the help of Metro naturalist James Davis, who will have small telescopes for a close look. Learn about the natural history of painted turtles and why they are so rare. This program is suitable for adults and children 5 and older. Meet in the parking area on North Marine Drive. Free. Advance registration required; call (503) 797-1715.

Tuesday, July 24, 7:00 p.m.

Twilight Tuesday at Smith and Bybee Wetlands

This relaxing walk at Smith and Bybee Wetlands Natural Area takes advantage of long summer days and gives you a chance to unwind after work and to see mammals such as beaver, muskrat, otter, raccoon, deer and bats. Metro naturalist James Davis teaches the basic techniques of wildlife watching and identification. Bring your binoculars or borrow a pair of ours. This program is suitable for adults and children age 10 and older; participants must be able to be quiet, sneaky and patient. Registration and payment of \$5 per adult are required in advance; call (503) 797-1715.

Saturday, July 28, 5:00 p.m.

Midsummer night at Lone Fir Pioneer Cemetery

Watch Portland history come to life as you relax on a blanket, enjoying live music and performances that tell the stories of some of the more interesting individuals buried at Lone Fir Pioneer Cemetery. Bring a picnic and lawn chairs. This program is great for all ages. Enter at Southeast 21st Avenue and Morrison Street. Suggested donation is \$5 per person or \$10 per family or group. For more information, call (503) 775-6278.

Sunday, July 29, 9:00 a.m.

Columbia Slough Regatta

Come to the largest one-day paddling event in Oregon. The Columbia Slough is home to more than 175 species of birds, 25 species of fish and a wide variety of mammals. Bring your own watercraft or make a reservation for a free canoe or kayak rental. Enjoy educational booths, t-shirts, snacks and beverages. Free. Advance registration required; call Katie at (503) 459-7674.

Tuesday, July 31, 9:00 a.m.

Schoolyard rain garden tour and work party

Tour three Portland area schoolyard rain gardens designed to reduce the amount of storm water entering local rivers. Each site visit will include a tour of the student created gardens followed by maintenance of the grounds and plants. Refreshments provided. Advance registration required; visit www.lcrep.org or call McKenzie at (503) 226-1565 ext. 229.

About Metro

Clean air and clean water do not stop at city limits or county lines. Neither does the need for jobs, a thriving economy and good transportation choices for people and businesses in our region. Voters have asked Metro to help with the challenges that cross those lines and affect the 25 cities and three counties in the Portland metropolitan area.

A regional approach simply makes sense when it comes to protecting open space, caring for parks, planning for the best use of land, managing garbage disposal and increasing recycling. Metro oversees world-class facilities such as the Oregon Zoo, which contributes to conservation and education, and the Oregon Convention Center, which benefits the region's economy.

Your Metro representatives

Metro Council President
David Bragdon

Metro Councilors
Rod Park, District 1
Brian Newman, District 2
Carl Hosticka, District 3
Kathryn Harrington, District 4
Rex Burkholder, District 5
Robert Liberty, District 6

Auditor
Suzanne Flynn

Councilor Rex Burkholder contact information

Address	600 NE Grand Ave. Portland, OR 97232
Phone	(503) 797-1546
Fax	(503) 797-1793
E-Mail	burkholderr@metro.dst.or.us
Assistant	Kathryn Sofich
Phone	(503) 797-1941
E-Mail	sofichk@metro.dst.or.us
Web	www.metro-region.org

July 2007 dch/final

Printed on recycled paper