

Lake Oswego Portland

**T R A N S I T A N D
T R A I L S T U D Y**

June 28, 2007

BRT Alternative



- **Faster and more reliable bus service through the use of transit priority treatments**
- **Signal priority and queue jumps at critical signalized intersections to minimize delay**
- **High-level station amenities such as enhanced shelters, lighting and benches**
- **Operation on Highway 43, generally in mixed-use traffic**

Streetcar Alternative



- Improves travel time significantly between Lake Oswego and Portland by extending the existing Portland Streetcar from SW Lowell Street (currently under construction) to downtown Lake Oswego
- High-level station amenities such as enhanced shelters, lighting and benches
- Operates on the Willamette Shore Line right of way, SW Macadam Avenue or parts of both
- Mostly single-track design with short double-track sections to improve reliability and travel time

No-Build Alternative

The No-Build alternative provides a basis for comparison of the build alternatives and only includes highway, pedestrian, bicycle, and transit improvements in the corridor that would be built as identified in the Regional Transportation Plan (RTP) Financially Constrained network for which funding has been identified.

BRT Station



SW Lowell St.

Streetcar Station



SW Hamilton Ct.

Existing



Willamette Shore Line near SW Richardson St.

Streetcar Without Trail



Willamette Shore Line near SW Richardson St.

Streetcar With Trail



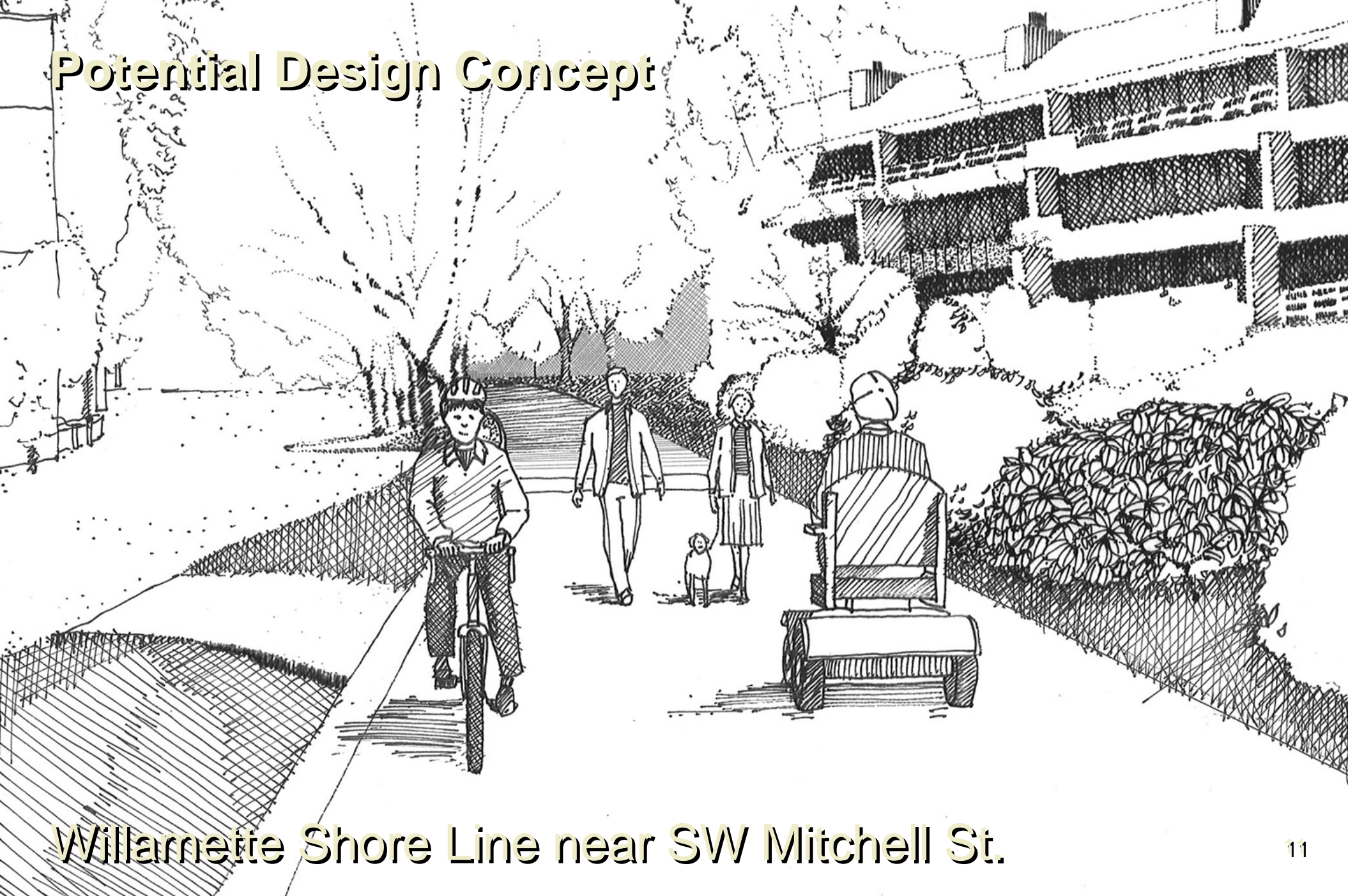
Willamette Shore Line near SW Richardson St.

Streetcar With Trail



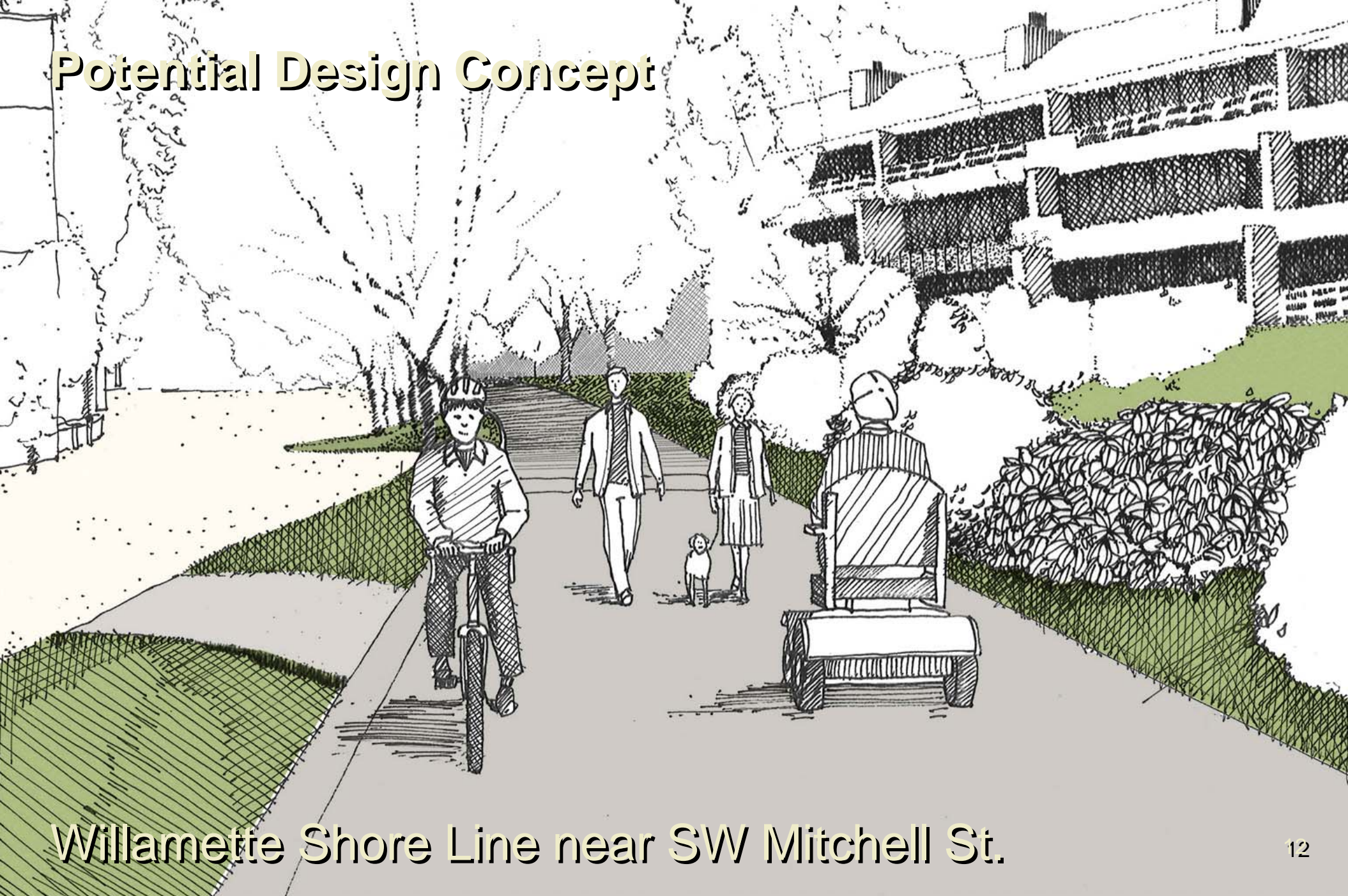
Willamette Shore Line near SW Richardson St.

Potential Design Concept



Willamette Shore Line near SW Mitchell St.

Potential Design Concept



Willamette Shore Line near SW Mitchell St.

Potential Design Concept



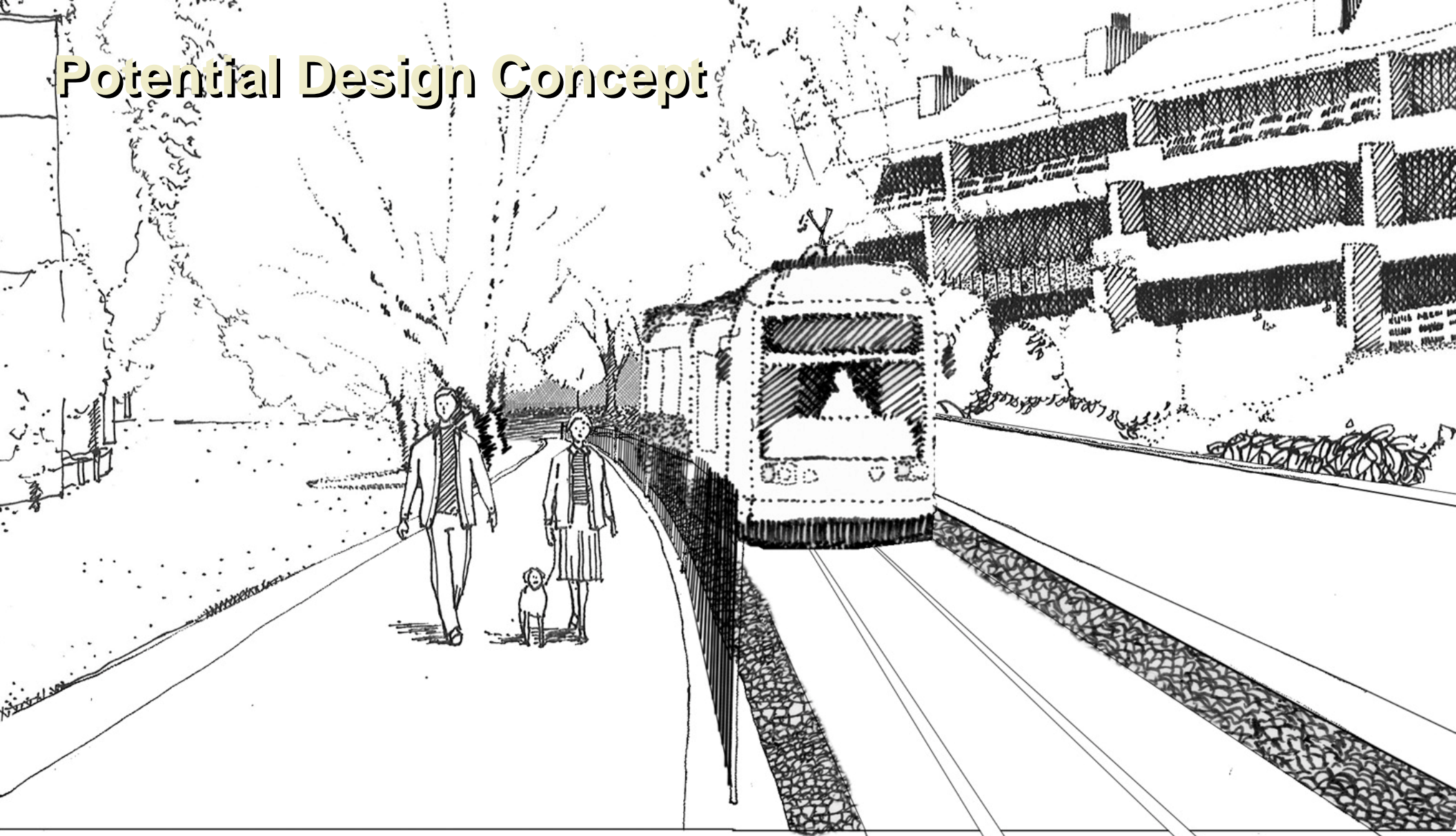
Willamette Shore Line near SW Mitchell St.

Potential Design Concept



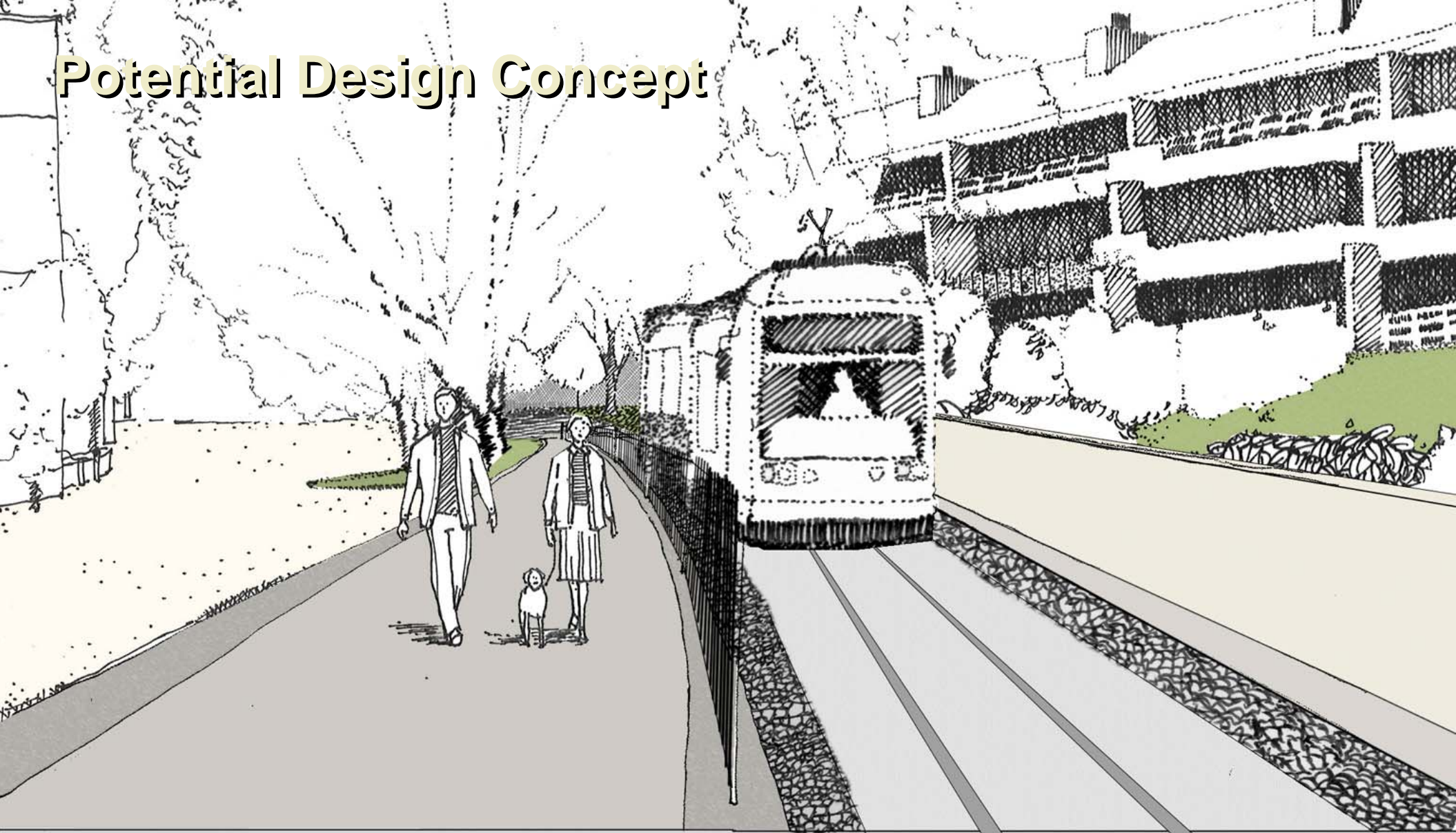
Willamette Shore Line near SW Mitchell St.

Potential Design Concept



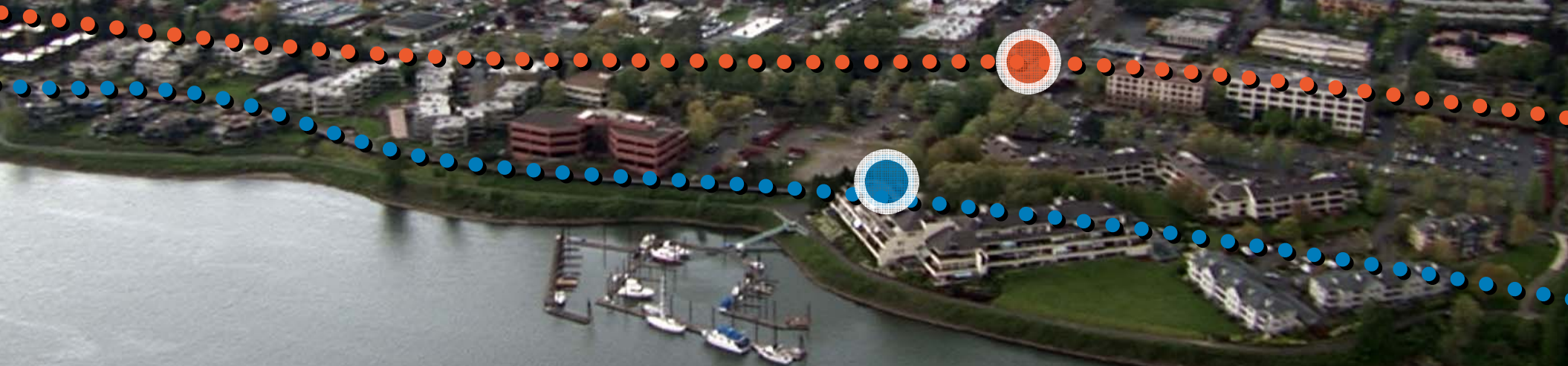
Willamette Shore Line near SW Mitchell St.

Potential Design Concept



Willamette Shore Line near SW Mitchell St.

Streetcar and BRT Stations



SW Boundary St.

Existing



SW Macadam Ave. and SW Boundary St.

BRT Station



SW Macadam Ave. and SW Boundary St.

Streetcar Station



SW Macadam Ave. and SW Boundary St.

Potential Redevelopment Opportunity



SW Macadam Ave. and SW Iowa St.

OR 43

Potential Redevelopment Opportunity



SW Macadam Ave. and SW Iowa St.



Potential Redevelopment Opportunity



SW IOWA

OR 43 (MACADAM)

SW Macadam Ave. and SW Iowa St.



Potential Redevelopment Opportunity

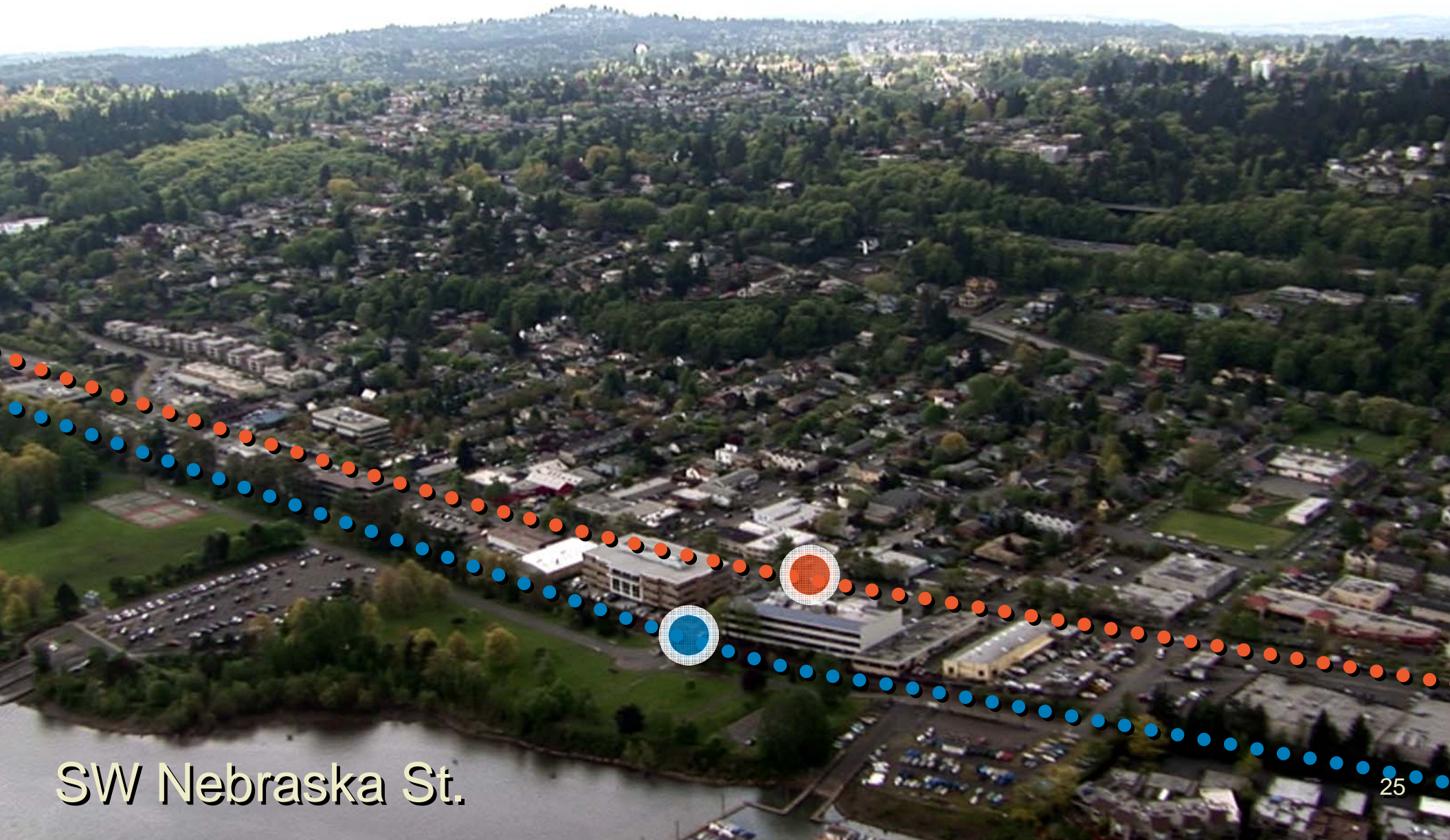


OR 43 (MACADAM)

SW Macadam Ave. and SW Iowa St.

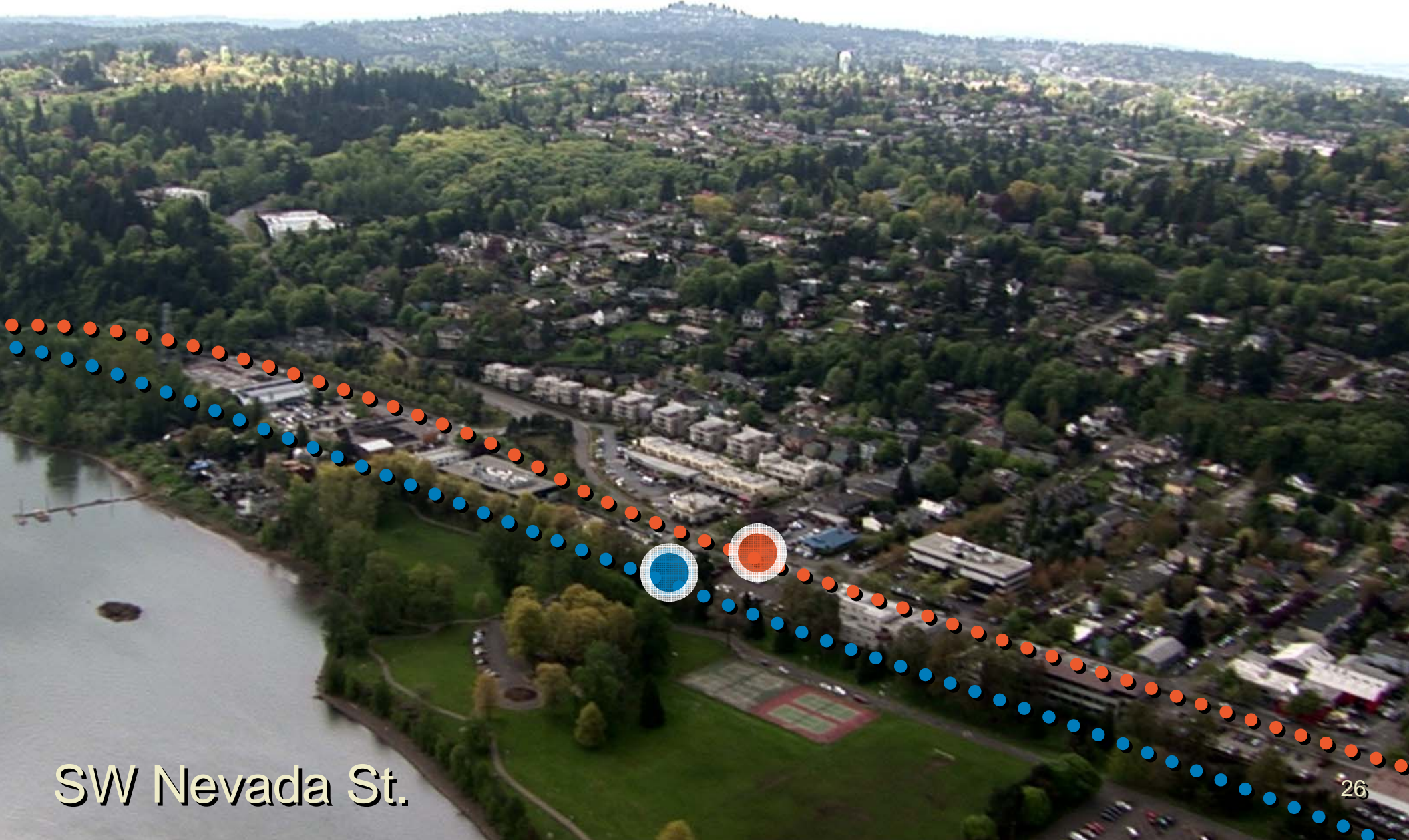


Streetcar and BRT Stations



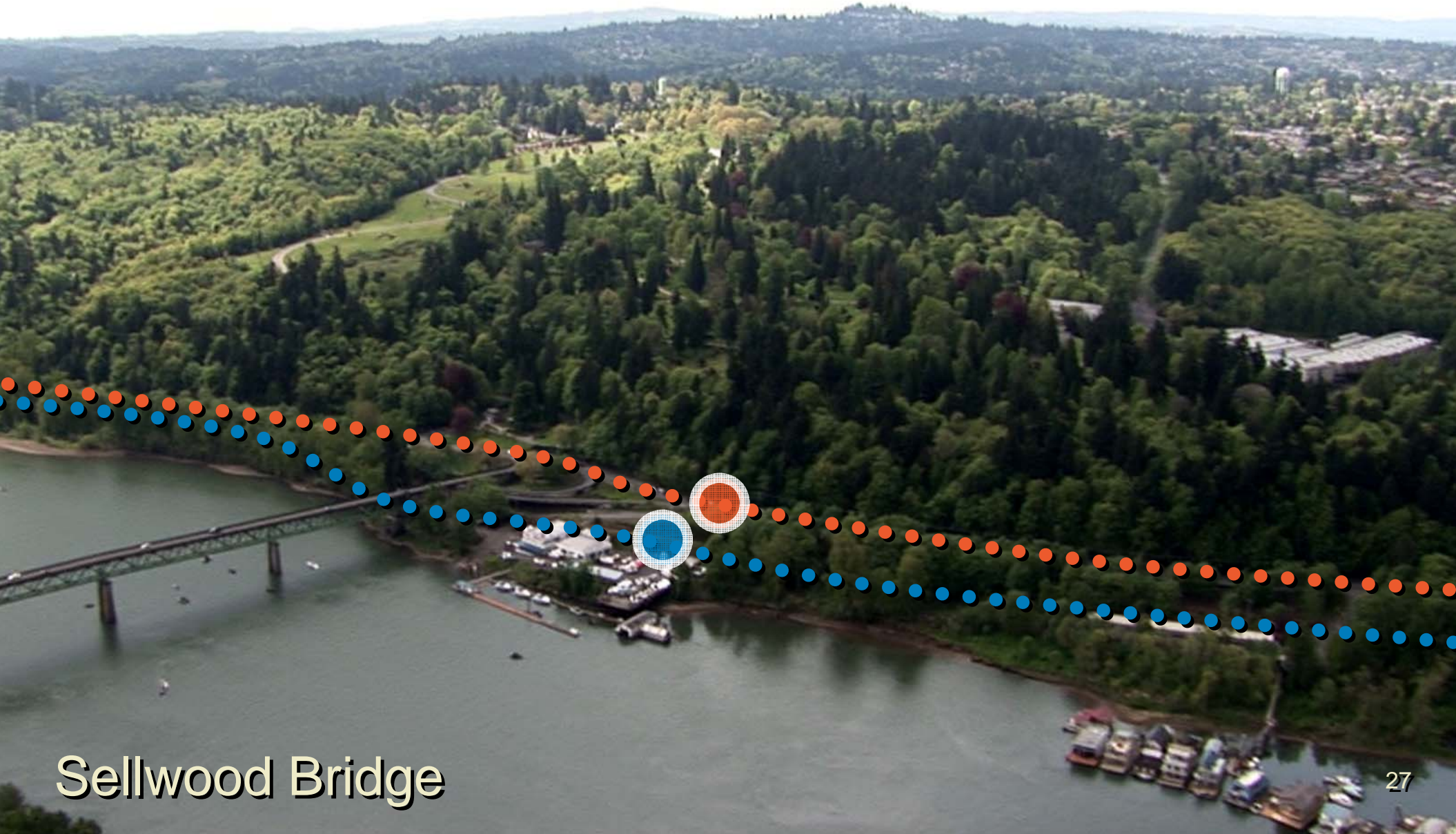
SW Nebraska St.

Streetcar and BRT Stations



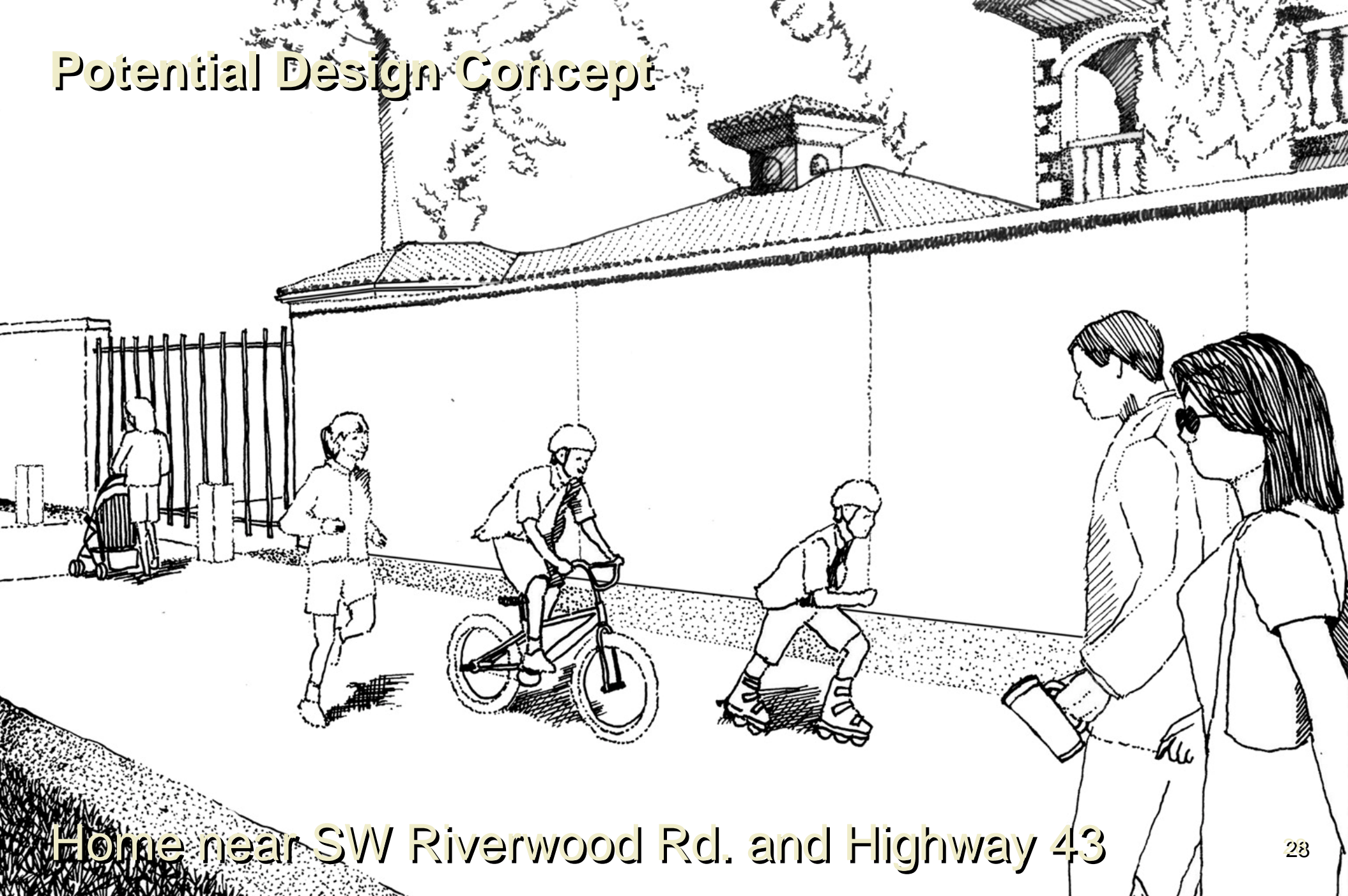
SW Nevada St.

Streetcar and BRT Stations



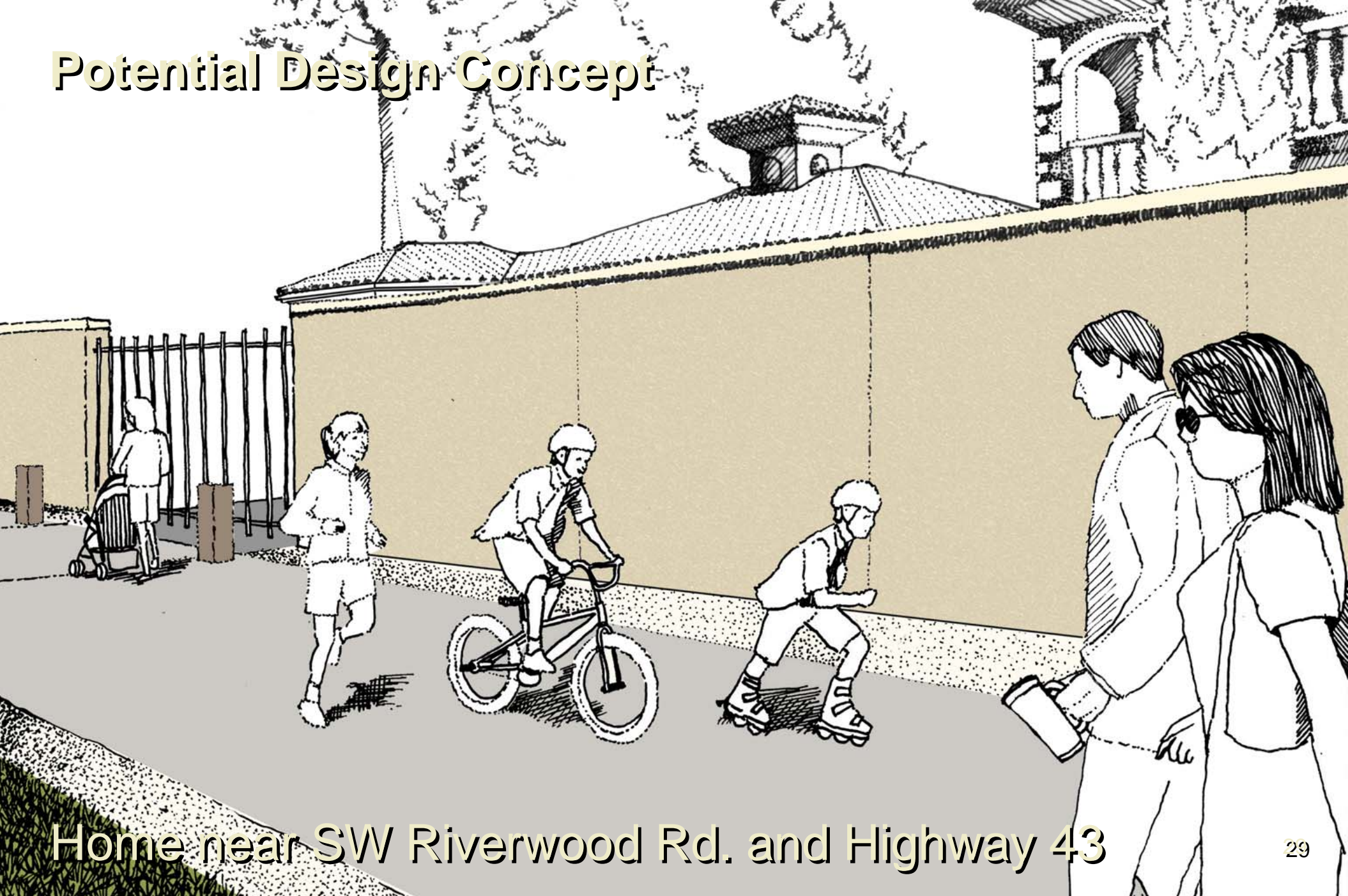
Sellwood Bridge

Potential Design Concept



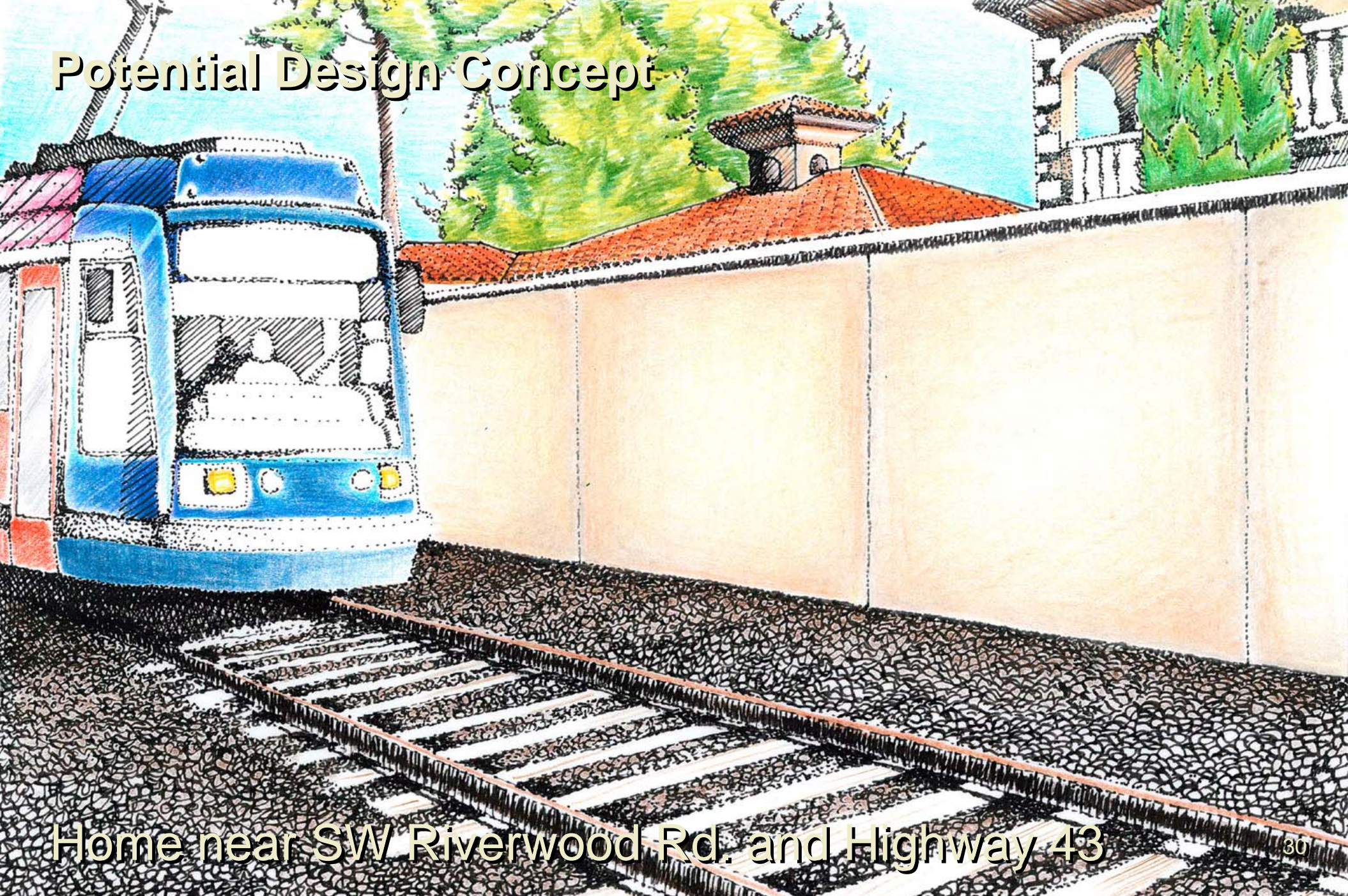
Home near SW Riverwood Rd. and Highway 43

Potential Design Concept



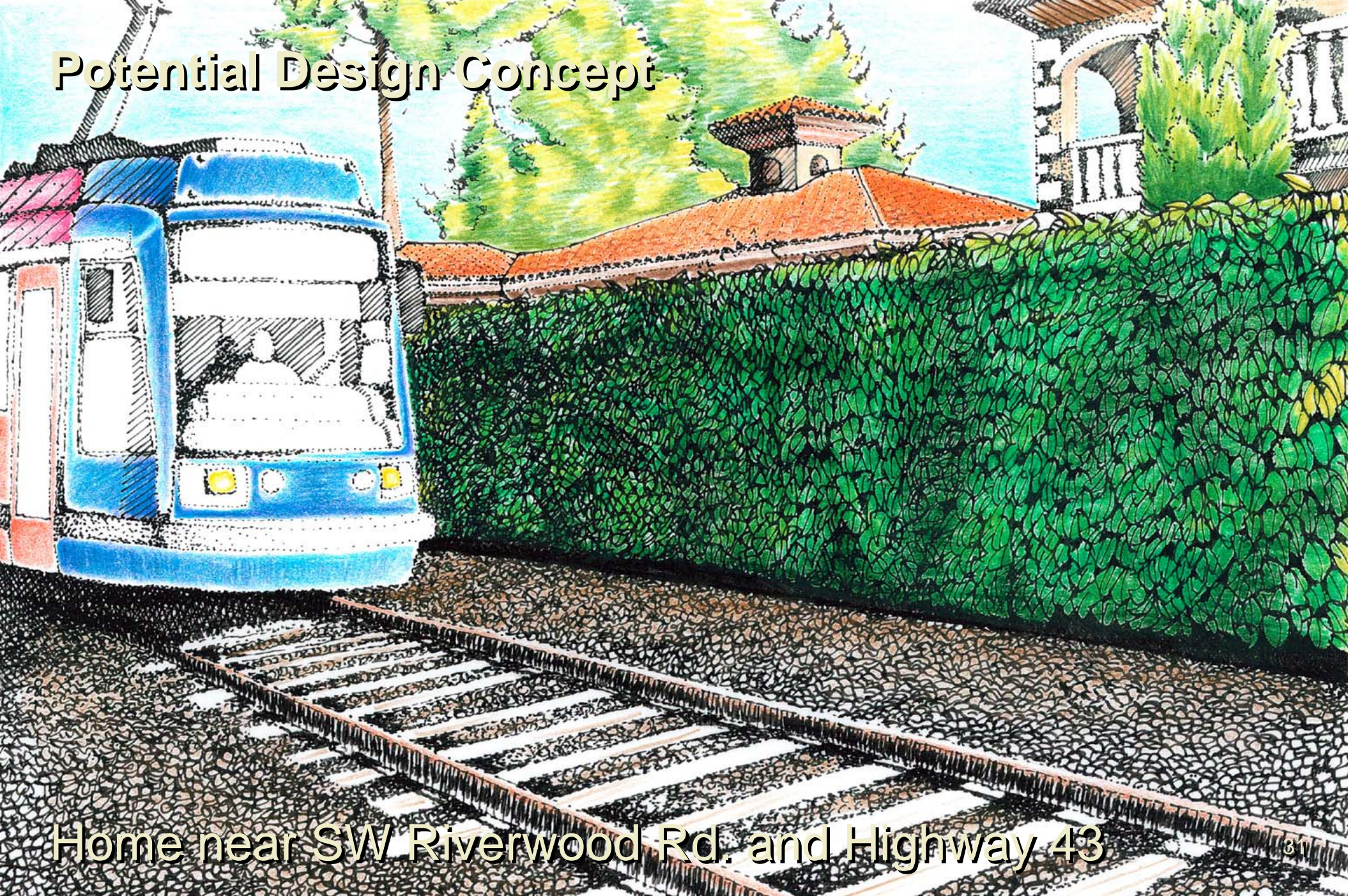
Home near SW Riverwood Rd. and Highway 43

Potential Design Concept



Home near SW Riverwood Rd. and Highway 43.

Potential Design Concept



Home near SW Riverwood Rd. and Highway 43.

Streetcar Station



SW Riverwood Rd.

Existing

SW Riverwood Rd.



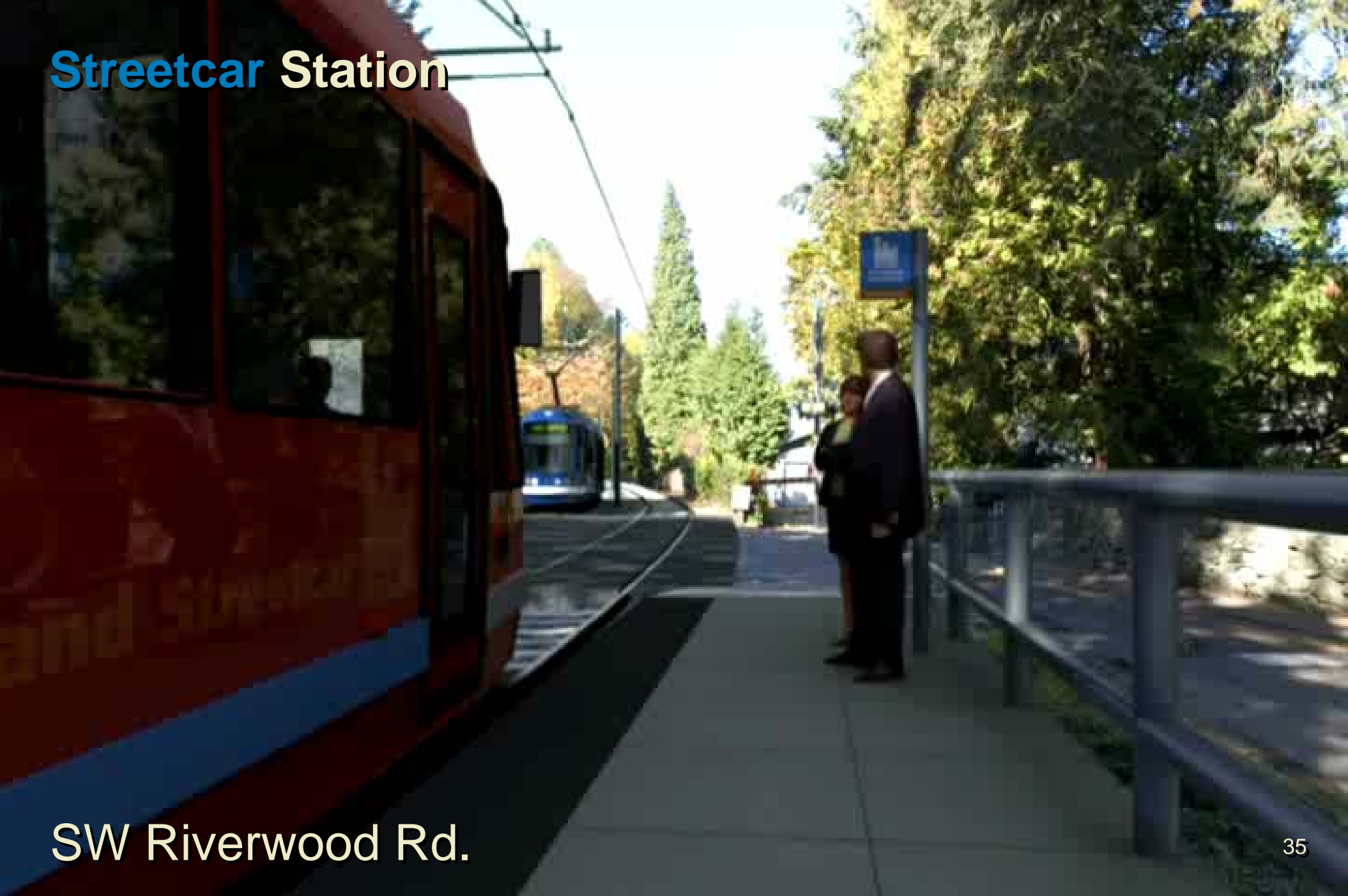
Streetcar Station



SW Riverwood Rd.

Streetcar Station

SW Riverwood Rd.



An aerial photograph of a suburban area with a dense forest of green trees. A blue dotted line curves along the left side of the image, starting from a body of water and heading towards the bottom left. An orange dotted line runs diagonally from the top left towards the bottom right. A red circular marker with a white grid pattern is located on the orange line in the middle-right portion of the image. The text "BRT Station" is in the top left, and "Highway 43 and SW Military Rd." is in the bottom left.

BRT Station

Highway 43 and SW Military Rd.

Existing

Highway 43 and SW Military Rd.



BRT Station



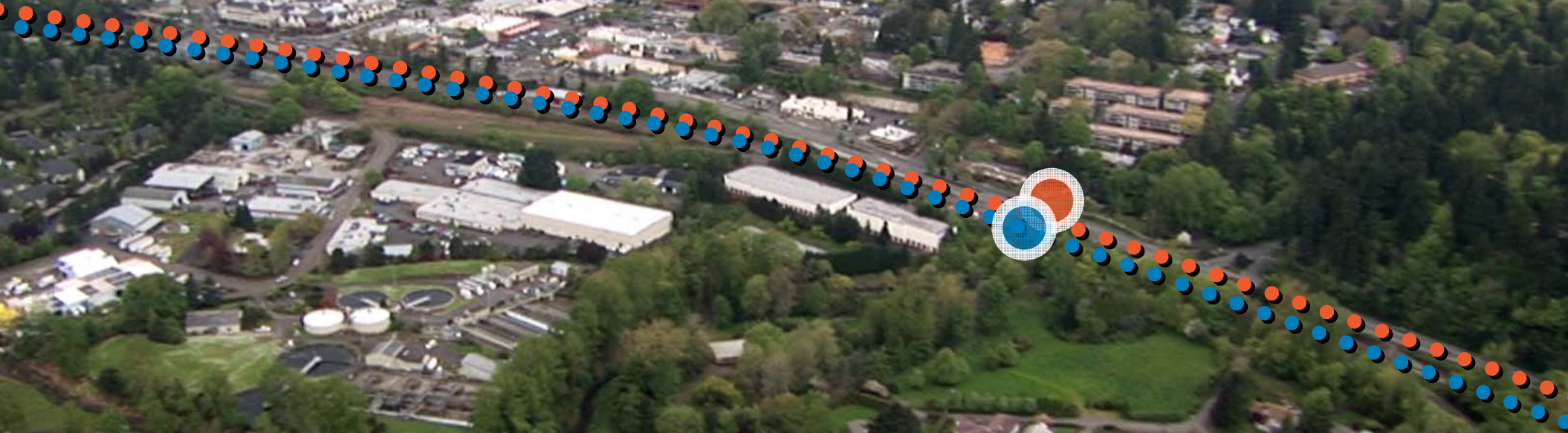
Highway 43 and SW Military Rd.

Streetcar and BRT Stations



Highway 43 and SW Briarwood Rd.

Streetcar and BRT Stations

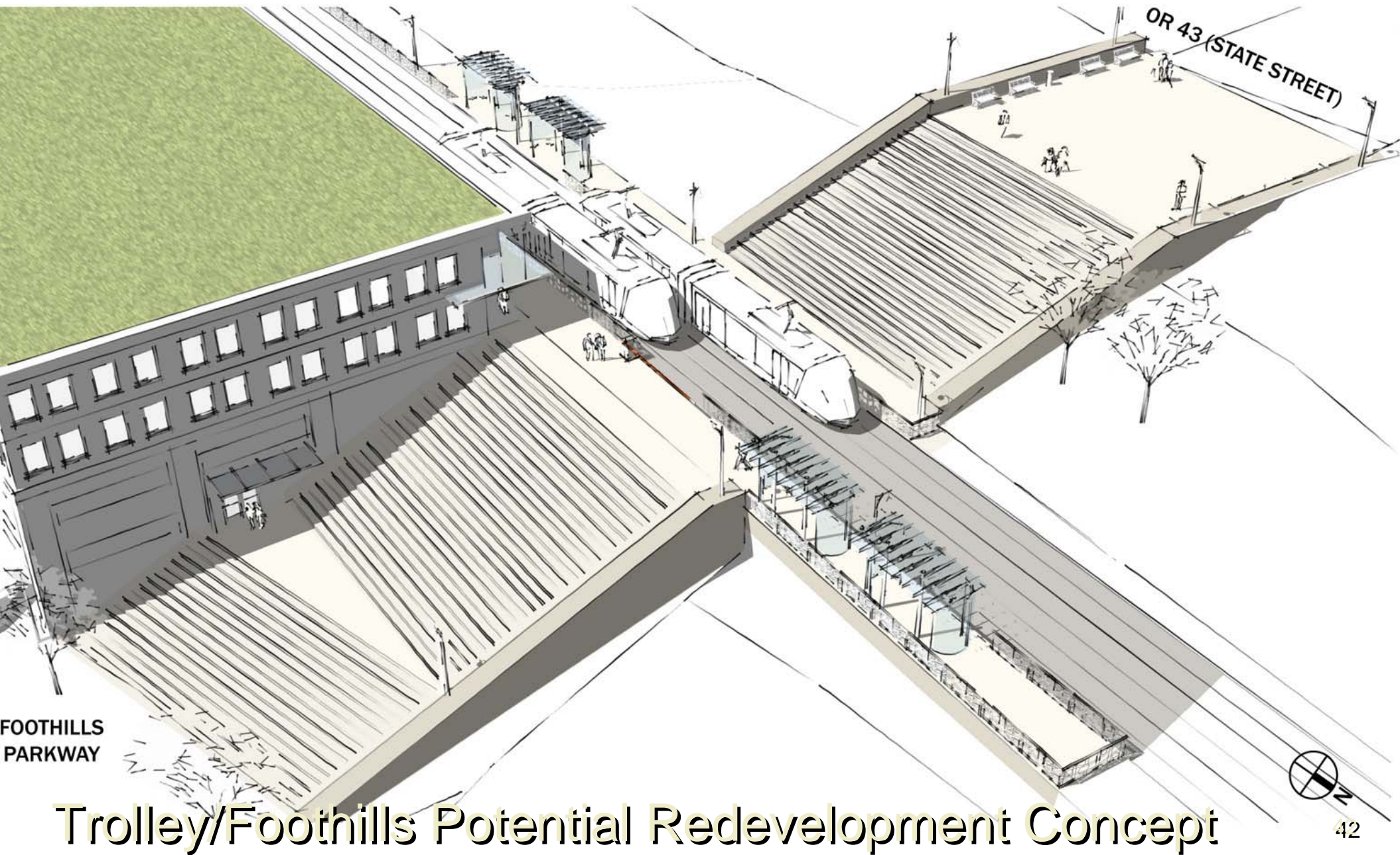


E Ave.

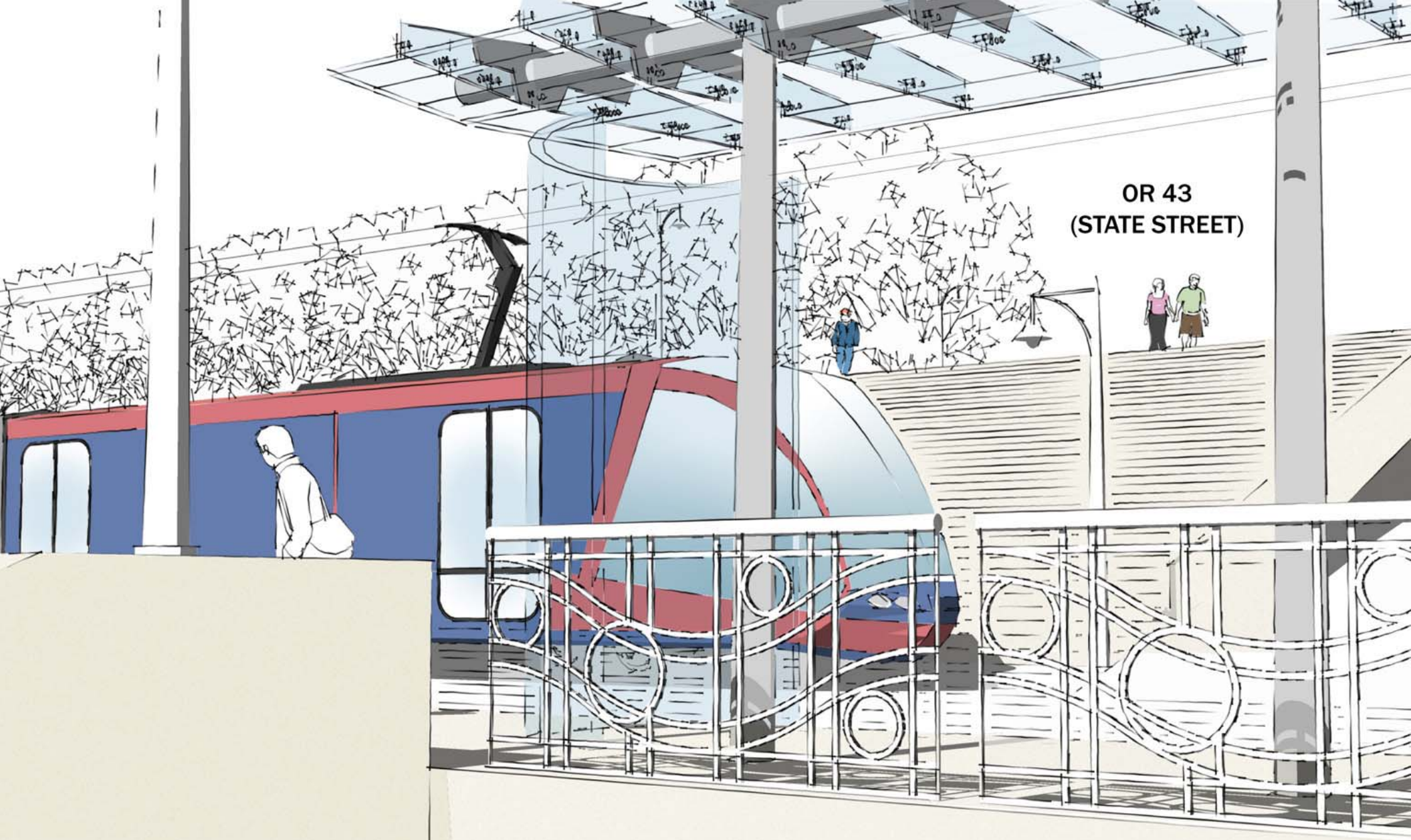
Streetcar and BRT Stations



Trolley Terminus



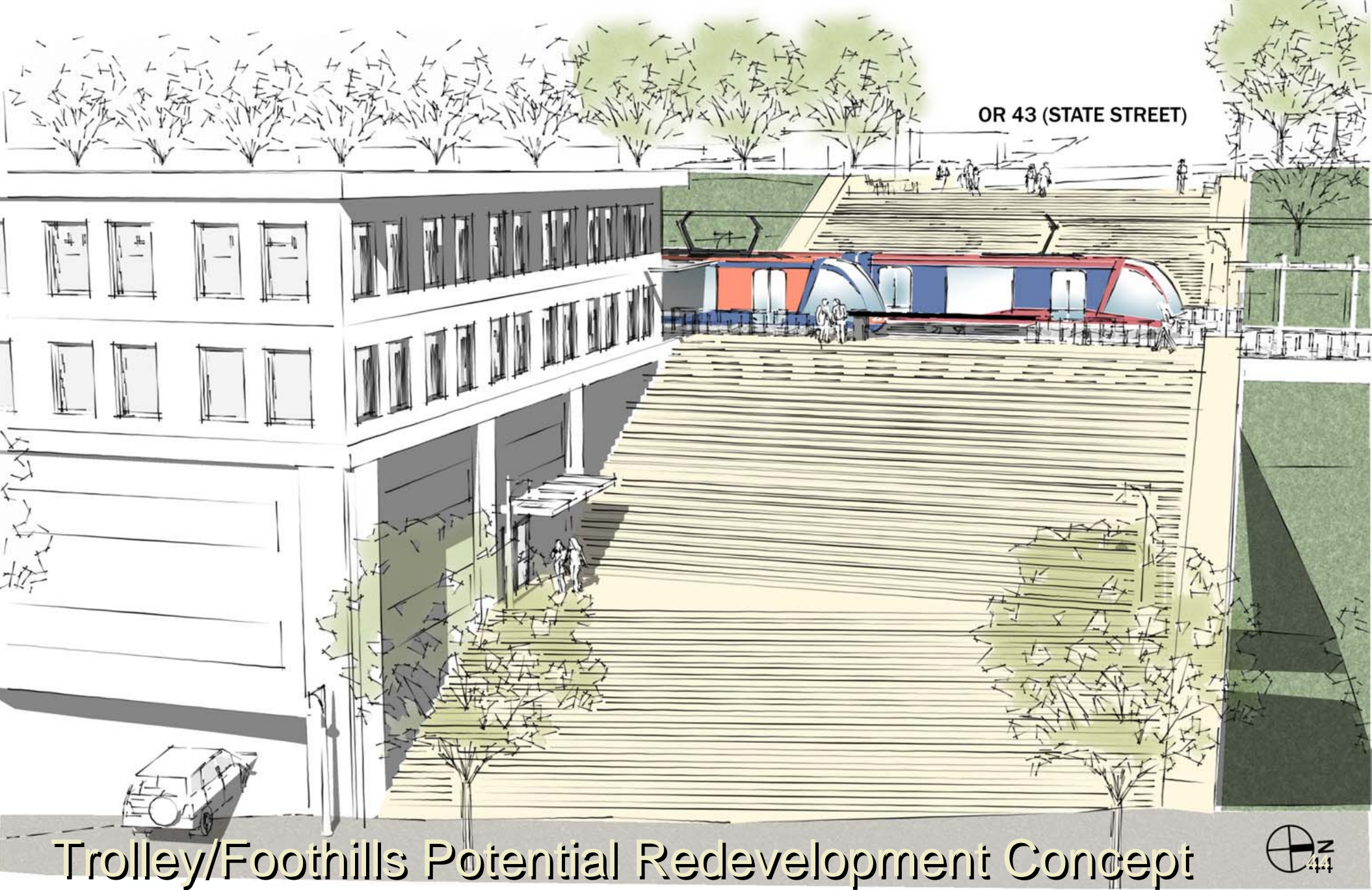
Trolley/Foothills Potential Redevelopment Concept



OR 43
(STATE STREET)

Trolley/Foothills Potential Redevelopment Concept





OR 43 (STATE STREET)

Trolley/Foothills Potential Redevelopment Concept

FOOTHILLS PARKWAY



Streetcar and BRT Stations



Albertson's Terminus

Existing

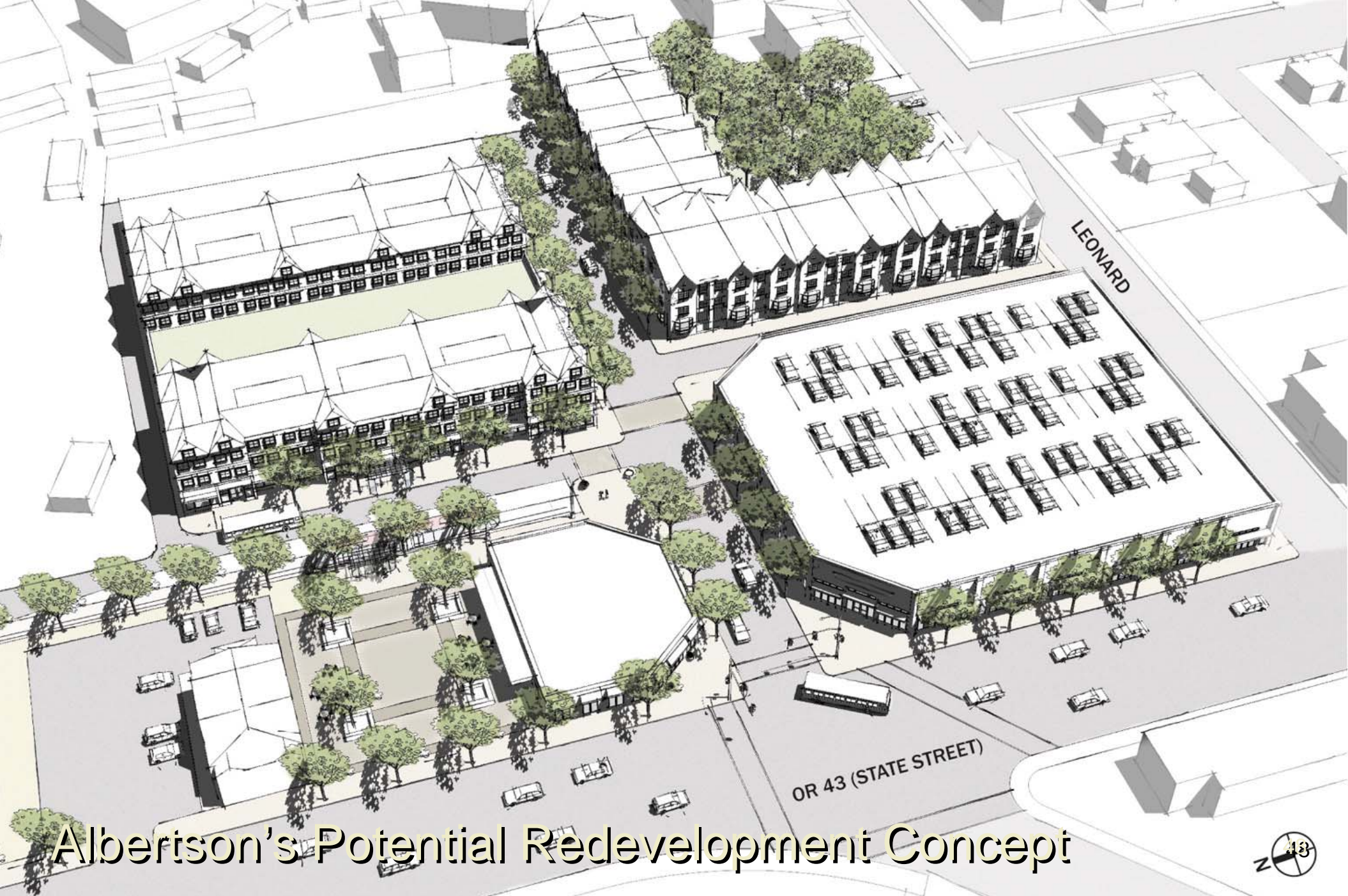


Albertson's Terminus

Streetcar Station



Albertson's Terminus



LEONARD

OR 43 (STATE STREET)

Albertson's Potential Redevelopment Concept





Albertson's Potential Redevelopment Concept



Albertson's Potential Redevelopment Concept

Streetcar Safeway Loop Option



A Ave. & 1st St.

Existing



A Ave. & 1st St.

Streetcar



A Ave. & 1st St.



Safeway Terminus Potential Redevelopment Concept



5TH STREET

Safeway Terminus Potential Redevelopment Concept





Safeway Terminus Potential Redevelopment Concept

