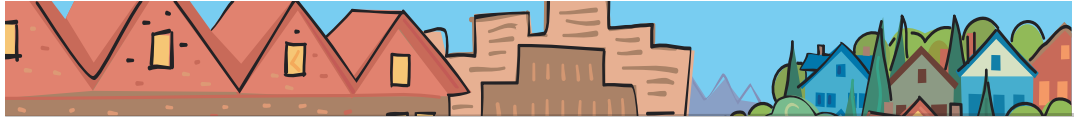


Rod Park

METRO COUNCIL DISTRICT 1 NEWS



METRO

PEOPLE PLACES
OPEN SPACES

Rod Park represents District 1, which includes Fairview, Gresham, Happy Valley, Maywood Park, Troutdale, Wood Village, Damascus and portions of East Portland.



A message from Rod Park

Last month, the Wilkes Community Group and local partner Russell Neighborhood Association celebrated the completion of the Wilkes Creek bridge and path project, which will provide pedestrian access to Wilkes Creek. This project is a one of many shining examples of the success of community involvement that has resulted from Metro's Nature in Neighborhood grant program.

The Wilkes Creek Natural Area is a 2.2 acres parcel important for protecting water quality and fish habitat. The creek, Northeast Portland's last remaining fresh water stream from the Columbia River Watershed, begins south of Fremont Street at 145th Avenue and runs north to Wilkes Park. With the help of two successive Metro Nature in Neighborhoods grants, the Wilkes Community Group cleaned up illegal dumps, constructed a trail, cleared non-native vegetation, planted native plants, constructed a small footbridge, and provided community outreach around these activities at Wilkes Park.

Wilkes Community Group has leveraged nearly \$16,000 in community support through volunteerism and in-kind donations to implement this project, including partnerships with SOLV and B-K Sheetmetal as well as numerous community volunteer support and in-kind donations.

This project demonstrates the kinds of outcomes the Nature in Neighborhood grant program was aiming for – providing improved access to natural areas in the neighborhoods around the region. Kids in the Wilkes neighborhood can now learn about the habitat living in Wilkes Creek and explore the surrounding area.

— Rod Park

Celebrate salmon return at Oxbow Park's Salmon Festival

Join us at Oxbow Park Saturday and Sunday, October 13 and 14 for the annual Salmon Festival, commemorating the journey of the Chinook salmon to the Sandy River Gorge and celebrating the historic connection shared between people and wild salmon. Along with Metro, the hosts of this unique festival include the City of Portland Water Bureau, Columbia River Inter-Tribal Fish Commission, Mt. Hood National Forest, and Western Rivers Conservancy.

The Salmon Festival offers a wide range of indoor and outdoor attractions including cultural exhibits, nature walks, music, and

a salmon barbeque. In addition children will be sure to enjoy activities such as arts and crafts, storytelling, wagon rides, and ancient forest hikes. Visitors are also welcome to learn about the life cycle and habitat of salmon through hands-on activities at the School of Fish and salmon walks.

Wind your way through the festival on wooded trails or hop on a horse-drawn wagon or a shuttle van to get from place to place. Feel free to enjoy a guided walk into the ancient forest with a naturalist, or take a self-guided stroll to the banks of the river to see salmon spawning. Fish biologists will be at the river's edge to help point what can be seen in the water and answer your questions.

continued

Salmon Festival

continued from page 1

Entry fee is \$8 per vehicle or \$12 per bus. No pets allowed. Oxbow Regional Park is located within the Sandy River Gorge. For more information, visit www.metro-region.org/salmonfestival or call Metro at (503) 797-1850.

Community members needed for Metro's advisory committees

Two of Metro's transportation advisory committees have openings for community representatives beginning January 2008. The Transportation Policy Alternatives Committee (TPAC) and Regional Transportation Options (RTO) sub-committee both have two-year terms available.

TPAC is a technical advisory committee to the Joint Policy Advisory Committee on Transportation (JPACT), a forum for individuals in the transportation industry to recommend transportation options to the Metro Council based on the region's needs. TPAC is composed of 15 professional transportation staff and six at-large community representatives. Currently, three new community representatives are needed to fill open slots for the upcoming year. Applicants for these positions should have expertise or a strong interest in transportation issues.

The RTO, a subcommittee of TPAC, works within the larger policy advisory committee to develop policy that increases the frequency of carpooling, public transit, walking and cycling in the region. The RTO is composed of 20 professional transportation staff and four community representatives. The community seats expire at the end of 2007. Applicants for these positions should live in Multnomah, Clackamas, Washington or Clark County, and have an interest in promoting transportation choices that help reduce the number of drive-alone trips. The applicant from Clark County should commute to the Portland metro area for work or business.

Visit www.metro-region.org to submit an application online, or download the form and mail it completed to TPAC/RTO Recruitment, Metro Planning Department, 600 NE Grand Avenue, Portland, OR 97232. Applications are due at Metro by 5:00 pm on Friday, Oct. 12, 2007.

For more information on the TPAC seats, call Kelsey Newell, (503) 797-1916. For more information on the RTO seats, call Pam Peck, (503) 797-1866. Hearing impaired may call TDD (503) 797-1804.

Events of note in District 1

9 a.m. Saturday, Oct. 6

Tree planting at Osborn Creek

Take part in a restoration project by planting trees at this site in Fairview. Tools and trees will be provided. All ages are welcome. Advance registration required; visit www.solv.org or call Brett at (503) 844-9571 ext. 332.

9 a.m. Saturday, Oct. 13

Tree planting at Fairview Creek

Take part in a restoration project by planting trees at this site in Fairview. Tools and trees will be provided. All ages are welcome. Advance registration required; visit www.solv.org or call Brett at (503) 844-9571 ext. 332.

2 p.m. Sunday, Oct. 21

Ancient forest mushroom class at Oxbow Regional Park

Join mycologist Gary Slone for a two-hour class that ends with a walk on an easy trail in the old growth forest. This program is suitable for ages 12 and older. Dress warmly. Meet at Alder Shelter (picnic area "A"). Registration and a fee of \$10 per person are required in advance. There is a \$4 per vehicle entry fee payable at the park. Call (503) 797-1715 to register.

10 a.m. Saturday, Oct. 27

Animal tracking workshop at Oxbow Regional Park

Local tracker Terry Kem will introduce you to the basics of track identification and interpretation and the awareness and stealth skills needed to watch wildlife at close range. This program is suitable for adults and families. Bring a snack and meet at the floodplain parking area. Registration and a \$10 fee are required in advance. There is a \$4 per vehicle entry fee, payable at the gate. To register, call (503) 797-1715.

Councilor Rod Park contact information

Address	600 NE Grand Ave. Portland, OR 97232
Phone	(503) 797-1547
Fax	(503) 797-1793
E-Mail	parkr@metro.dst.or.us
Assistant	Kathryn Sofich
Phone	(503) 797-1941
E-Mail	sofichk@metro.dst.or.us
Web	www.metro-region.org

About Metro

Clean air and clean water do not stop at city limits or county lines. Neither does the need for jobs, a thriving economy and good transportation choices for people and businesses in our region. Voters have asked Metro to help with the challenges that cross those lines and affect the 25 cities and three counties in the Portland metropolitan area.

A regional approach simply makes sense when it comes to protecting open space, caring for parks, planning for the best use of land, managing garbage disposal and increasing recycling. Metro oversees world-class facilities such as the Oregon Zoo, which contributes to conservation and education, and the Oregon Convention Center, which benefits the region's economy.

Your Metro representatives

Metro Council President
David Bragdon

Metro Councilors
Rod Park, District 1
Brian Newman, District 2
Carl Hosticka, District 3
Kathryn Harrington, District 4
Rex Burkholder, District 5
Robert Liberty, District 6

Auditor
Suzanne Flynn

October 2007 dch/final
Printed on recycled paper