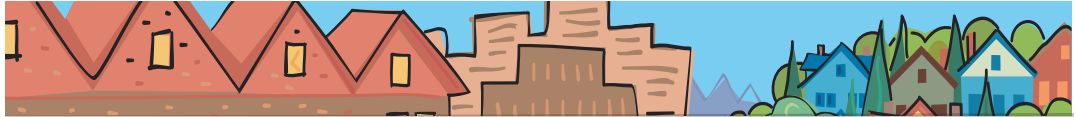


Brian Newman

METRO COUNCIL DISTRICT 2 NEWS



METRO

PEOPLE PLACES
OPEN SPACES

Brian Newman
represents District
2, which includes a
portion of Southwest
Portland and much
of urban Clackamas
County including
Gladstone, Johnson
City, Lake Oswego,
Milwaukie, Oak
Grove, Oregon City,
Rivergrove and
West Linn.



Thank You!

It has been a privilege for me to represent the residents of District 2 on the Metro Council since 2003. I am deeply grateful to the voters for putting their trust in me and giving me the opportunity to serve them for the past five years.

As you may have already heard, I am vacating my seat on the Metro Council, effective October 6th, to become Director of Campus Planning and Development at Oregon Health and Science University (OHSU). Resigning from the Metro Council is not something that I considered lightly and was certainly not something that I anticipated when I was reelected 16 months ago.

Significant life changes, such as this, are often unpredictable and rarely come along at convenient times. I would have preferred to make the transition at the end of my current council term, but that was not possible. Fortunately, I am departing at a time when several of my priority projects are completed or well on their way to implementation.

- Last year I worked closely with local government officials and representatives of the development industry to identify a funding source to pay for the land use planning of the areas added to the urban growth boundary. Through this effort the Metro Council adopted a nominal fee on new construction to fund planning, the first program of its type in the country.
- When I was first running for the Metro Council, I pledged to better connect Clackamas County to the rest of the region with high-capacity public transit. Five years later we have light rail under construction along I-205 to the Clackamas Town Center, the State Legislature just dedicated \$250 million to extend light rail from Portland to downtown Milwaukie, and we are well under way with the planning for a streetcar extension to Lake Oswego in the Highway 43 corridor. Within a decade all three of these lines should be operating.
- 18 months ago I asked the Metro Council to fund a master plan update for the Oregon Zoo. They supported this request and appointed me to lead the effort on behalf of the council. In October I will present a plan that will place the Oregon Zoo at the national forefront of wildlife conservation efforts and will provide a financial and management strategy to ensure the zoo's success for years to come.
- Finally, for the past two years I have led the council's efforts to support nature-friendly development practices in order to protect critical habitat areas and water quality. One major project is "Integrating Habitats," an international design competition to solicit the best ideas for nature-friendly site planning and development. I personally raised over \$115,000 from sponsors to fund this program. Registration for the competition just opened and we have over 85 students and professionals signed up to participate in the competition.

These are just the highlights of some projects that I have had the opportunity to work on during my tenure on the Metro Council. Certainly, many challenges remain, but I have a great degree of confidence in the leadership of Council President Bragdon and my council colleagues to continue this good work on behalf of the residents of the region.

Because of the timing of my vacancy, the Metro Council will make an interim appointment to fill the seat. The application process for anyone seeking the appointment will run from mid-September to mid-October, and the Metro Council plans to have a successor in place by late October or early November.

The District 2 appointee will begin service immediately upon appointment and serve until January 2009. The appointee would be eligible to run in the May 2008 primary and November 2008 general elections to serve out the remainder of the four-year term until January 2011. For more information about the appointment process, please contact Ruth Scott, the Director of Metro's Human Resources Department, at (503) 797-1572. Until this appointment takes place, if you have any constituent needs, please contact Emma Stocker, Council Policy Coordinator, at (503) 797-1543.

As for me, I will continue my efforts to manage growth and create great places. However, my professional role and the scope of my work will be different. Instead of shaping regional policies, I will be working to implement change on the ground and to shape the future of one large institution, OHSU, on Marquam Hill, the new Schnitzer Campus in South Waterfront, and the West Campus in Hillsboro.

Thank you again for the opportunity to serve you on the Metro Council. It has been the best job I have ever had and I will miss it very much.

Sincerely,

— *Brian Newman*

P.S. Beginning October 1, you can reach me at (503) 346-0005 or newmanb@ohsu.edu.

About Metro

Clean air and clean water do not stop at city limits or county lines. Neither does the need for jobs, a thriving economy and good transportation choices for people and businesses in our region. Voters have asked Metro to help with the challenges that cross those lines and affect the 25 cities and three counties in the Portland metropolitan area.

A regional approach simply makes sense when it comes to protecting open space, caring for parks, planning for the best use of land, managing garbage disposal and increasing recycling. Metro oversees world-class facilities such as the Oregon Zoo, which contributes to conservation and education, and the Oregon Convention Center, which benefits the region's economy.

Your Metro representatives

Metro Council President David Bragdon

Metro Councilors

Rod Park, District 1

Brian Newman, District 2

Carl Hosticka, District 3

Kathryn Harrington, District 4

Rex Burkholder, District 5

Robert Liberty, District 6

Auditor

Suzanne Flynn

Celebrate Councilor Brian Newman's
years of service on the Metro Council
and wish him well in his new
endeavors at OHSU and beyond.

Reception

4:30 p.m. Thursday, September 27

Following the Metro Council meeting

Metro Council Chamber

600 NE Grand Avenue

District 2 contact information

Address 600 NE Grand Ave.
Portland, OR 97232

Phone (503) 797-1887

Fax (503) 797-1793

E-mail metro council@metro.dst.or.us

Assistant Emma Stocker

Phone (503) 797-1543

E-mail stockere@metro.dst.or.us

Web www.metro-region.org