

BEFORE THE METRO COUNCIL

APPROVING THE NATURAL AREAS ACQUISITION
REFINEMENT PLAN FOR THE DAIRY AND MCKAY
CREEKS CONFLUENCE TARGET AREA

RESOLUTION NO. 07-3855

Introduced by Chief Operating Officer
Michael J. Jordan, with the
concurrence of Council President
David Bragdon

WHEREAS, on March 9, 2006, the Metro Council adopted Resolution No. 06-3672B “For the Purpose of Submitting to the Voters of the Metro Area a General Obligation Bond Indebtedness in the Amount of \$227.4 Million to Fund Natural Area Acquisition and Water Quality Protection,” recommending submission for voter approval a general obligation bond to preserve and protect natural areas, clean water, and fish and wildlife (the “2006 Natural Areas Bond Measure” or “Measure”); and

WHEREAS, at the election held on November 7, 2006, the voters approved Ballot Measure 26-80, the 2006 Natural Areas Bond Measure; and

WHEREAS, the Dairy and McKay Creeks Confluence Target Area was identified in the Measure as one of 27 regional target areas for land acquisition, building on the success of land acquisitions pursuant to Metro’s 1995 Open Spaces Bond Measure Program; and

WHEREAS, as provided in the 2006 Natural Areas Bond Measure, Metro has undertaken a public refinement process to establish specific acquisition strategies, goals, objectives, and a confidential tax-lot specific acquisition target area map for each of the 27 target areas; and

WHEREAS, Metro’s refinement process included the compilation of available information about each target area; biological field visits and expert analysis of maps; interviews with key stakeholders including natural resource experts, property owners, representatives from state and local government agencies, and advocates from water quality, fish, and wildlife preservation interest groups; and eight public open houses at sites throughout the region and a “virtual” open house available via the internet, at which draft refinement plans were made available for public review and participants could share their target area priorities either in-person or electronically; and

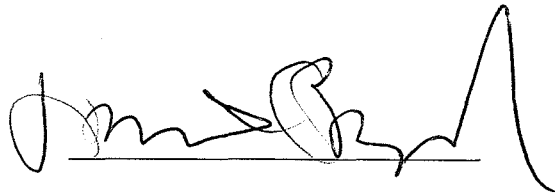
WHEREAS, Metro’s acquisition of properties within the Dairy and McKay Creeks Confluence Target Area will be in accordance with Metro Resolution 06-3727, “For the Purpose of Establishing Metro Council Policy Regarding the Acquisition of Rural Agricultural Land Pursuant to the 2006 Natural Areas Acquisition and Water Quality Protection Bond Measure,” adopted September 7, 2006; and

WHEREAS, on March 1, 2007, the Council approved Resolution No. 07-3766A, “Authorizing the Chief Operating Officer to Purchase Property with Accepted Acquisition Guidelines as Outlined in the Natural Areas Implementation Work Plan,” authorizing the Metro Chief Operating Officer to acquire properties identified on a Council-approved target area “confidential refinement map;” and

WHEREAS, the Council has reviewed the draft refinement plans and considered information it has received from citizens, scientists, advocates, and state and local governments; now, therefore

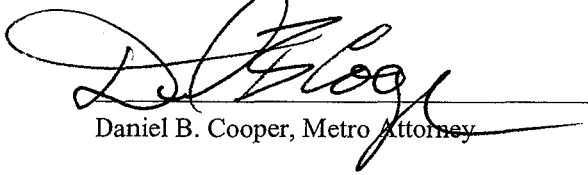
BE IT RESOLVED that the Metro Council adopts the Dairy and McKay Creeks Confluence Refinement Plan attached hereto as Exhibit A, including the confidential tax-lot specific map reviewed by the Council in Executive Session on September 4, 2007, and signed by Council President David Bragdon, and hereby authorizes the Chief Operating Officer to acquire properties in the Dairy and McKay Creeks Confluence Target Area consistent with the Council-approved Acquisition Parameters and Due Diligence Guidelines of the Natural Areas Implementation Work Plan.

ADOPTED by the Metro Council this 20th day of September 2007.



David Bragdon, Council President

Approved as to Form:



Daniel B. Cooper, Metro Attorney



**2006 NATURAL AREAS ACQUISITION PROGRAM
DAIRY AND MCKAY CREEKS CONFLUENCE TARGET AREA REFINEMENT PLAN**

Background

The 1995 Greenspaces bond acquisition goal for the Jackson Bottoms/Dairy/McKay Creeks target area focused on expanding the Jackson Bottom Wetlands complex on the north side of the confluence of Dairy Creek and the Tualatin River. Other objectives included protection of a linear greenway along Dairy and McKay Creeks for multiple values including wildlife habitat, water quality and quantity, education and stewardship opportunities, greenway corridor, permanent open space separation between Cornelius and Hillsboro, and passive recreation. Over 490 acres have been acquired to date, primarily an extensive portion of Jackson Bottom and segment of stream corridor along the Council Creek on the northern boundary of the City of Cornelius.

The 2006 Natural Areas bond measure stated:

The creeks converge at the interface of farmland and the urban growth boundary, forming broad wetlands accessible to a rapidly urbanizing area. Protecting the riparian areas and associated wetlands in the confluence area will contribute significantly to improved water quality in these major tributaries of the Tualatin River.

On September 7, 2006, the Metro Council passed Resolution 06-3727 “For the Purpose of Establishing Metro Council Policy Regarding the Acquisition of Rural Agricultural Land Pursuant to the 2006 Natural Areas Acquisition and Water Quality Protection Bond Measure.” This resolution provides direction to staff for land acquisition in target areas with rural agricultural land. The Dairy and McKay Creeks Confluence target area is one such area. During the refinement process representatives from various agricultural interests were consulted. Within this target area, land acquisition will be pursued in accordance with both the letter and the spirit of this resolution. Water quality and habitat protection are the primary focus for land acquisition. When contact is made with landowners, Metro staff will offer to purchase a conservation easement to protect the natural resources identified in this Refinement Plan. If the landowner prefers a fee title sale, Metro will purchase the land and will identify areas which are essential to achieve water quality and habitat protection goals and which are viable for agricultural use without conflict. Metro will offer this agricultural land for sale subject to a conservation easement. At the time habitat restoration commences, potential impacts to adjacent agricultural properties will be addressed.

The science report indicates that upper portions of McKay Creek support diverse habitat and plant communities. The areas around the Dairy Creek confluence with McKay and Council Creeks have great potential for restoration of wildlife habitats, wetlands and floodplain functions.

Target Area Description

Dairy and McKay creeks are located west of Hillsboro and east of Cornelius and drain a largely agricultural watershed within Washington County. Farm uses and growers have helped maintain the rural character of the area and provided stewardship of this land for decades. McKay Creek forms the western boundary of the city of Hillsboro and flows into Dairy Creek north of Tualatin Valley Highway. The combined creeks flow south converging with the Tualatin River at Jackson Bottom. Broad wetlands at the confluence of Dairy with Council and McKay creeks, and upstream riparian areas provide excellent opportunities for restoration of riparian and wetlands habitats, as well as flood storage and water quality protection.

Refinement Process

During the refinement process, Metro staff compiled available information about the Dairy and McKay Creeks Confluence target area, analyzed maps and conducted biological field visits. Individuals were interviewed representing various government agencies, property owners, interested groups and natural resource experts. The key concerns expressed during the interviews are summarized in Attachment 1.

A public open house to discuss the proposed Refinement Plan was held on June 26, 2007 at the Forest Grove Community Auditorium, one of eight such open houses held throughout the region. Notices of the open houses were mailed to area residents and other interested citizens. Metro also conducted a “virtual” open house by making target area informational materials, including maps, available “online” via the internet and allowing participants to share their target area priorities electronically. A total of 527 people attended the regional open houses, and the online open house had 6,363 visits from 3,419 unique visitors. More than 700 target surveys were submitted either in person or online. Five people completed the Dairy and McKay Creeks Confluence survey. A copy of the survey questionnaire is included as Attachment 2. The map associated with the questionnaire for this target area is included as Attachment 3, and complete survey results are included as Attachment 4.

Findings

- The flood plain associated with the Dairy and McKay Creeks watershed north of its confluence with the Tualatin River provides a natural buffer between Hillsboro on the western edge of the Regional Urban Growth Boundary to the east and the cities of Cornelius/Forest Grove to the west. This area also is characterized as having fertile agricultural soils and a long history of productive agricultural use.
- The southern end of the Dairy and McKay Creeks watershed is anchored by Jackson Bottom, a regionally significant wetland noted for its fish and wildlife habitat and water quality values and potential for wildlife and recreational corridor connectivity. Between 1980 and 1995, a number of public agencies, including the City of Hillsboro, Clean Water Services, Oregon Department of Fish and Wildlife, U.S. Soil Conservation District and Portland Audubon Society, worked individually and collectively to acquire, preserve and enhance the natural resource values of Jackson Bottom. By 1995, about 500 acres of the wetlands were in public ownership.
- With passage of the 1995 Open Spaces Bond Measure, Metro began acquiring property in Jackson Bottom to round out this public ownership and to date has acquired over 490 acres including an extensive portion of Jackson Bottom and segment of stream corridor along Council Creek on the northern boundary of the City of Cornelius.
- With a majority of Jackson Bottom now in public ownership, the emphasis has shifted northward into the main portion of the Dairy and McKay Creeks watershed. For different reasons, there is broad consensus among stakeholders that acquisition of riparian corridors is a higher priority than acquisition of lowlands for wetland restoration and/or flood management. Agricultural interests see such acquisitions as helping to provide buffers between urban and rural uses while minimizing incursions into productive agricultural acreage; natural resource stakeholders in helping to provide river access, protect wildlife habitat and improve water quality; and local cities in helping to create public trail connectivity.
- The biological assessment conducted for this target area indicates that riparian corridors and associated wetlands within Dairy, McKay, and Council Creeks have higher natural resource, habitat and water quality values than surrounding uplands.
- Based on aerial photographs, on-ground reconnaissance and review of the scientific literature, there are a number of rare plants (Kincaid’s Lupine, Shaggy horkelia and Nelson’s sedalcea) and rare animals (Northern Pacific pond turtle, bald eagle, Aleutian Canadian goose and winter-run

Steelhead) potentially present in the target area. These species have various Federal and state designations such as “listed as threatened” or “species of concern”.

- Five people completed the Dairy and McKay Creeks Confluence survey. Additional commentary was provided orally at the open house, most of which was consistent with the written responses. In rank order, the public priorities were:
 1. *Map area C* – Protect potential trail and habitat corridors along Council Creek from its confluence with Dairy Creek west to other protected public lands.
 2. *Map area A* – Protect lands and associated wetlands along Dairy Creek from its confluence with McKay Creek and extending northward to NW Susbauer Road.
 3. *Map area D* – Secure lands along the west side of Council Creek to Martin Road to provide habitat corridors, a potential trail corridor and a buffer to urban development.
 4. *Map area E* – Protect the lands along McKay Creek from its confluence with Dairy Creek northward towards the Camp Ireland Scout Camp primarily to buffer the area from urban development.
 5. *Map area B* – Protect the creekside, wetlands and upland forested areas in and around the Camp Ireland Scout Camp to provide benefits to wildlife.
 6. *Map area F* – Protect the lands along Dairy Creek north of Jackson Bottom to the confluence of Dairy and McKay creeks, with a focus on protecting the natural corridors along the creek.

Goal

Protect the riparian areas and associated wetlands in the Dairy and McKay Creeks confluence area to contribute significantly to improved water quality in these major tributaries of the Tualatin River.

Objectives

A target area map showing the tiered objectives described below is included as Attachment 5.

Tier I Objectives

- Protect important riparian and lowland areas around the confluence of Dairy and Council Creeks and Dairy and McKay Creeks including linkages to existing public lands.
- Acquire lands along Council Creek to extend protection of the riparian area and to create a linkage between existing public lands.

Tier II Objectives

- Protect riparian and wetland areas along portions of Council, Dairy and McKay Creeks.

STAFF REPORT

IN CONSIDERATION OF RESOLUTION NO. 07-3855, APPROVING THE NATURAL AREAS ACQUISITION REFINEMENT PLAN FOR THE DAIRY AND MCKAY CREEKS CONFLUENCE TARGET AREA

Date: September 20, 2007

Prepared by: Jim Desmond
Kathleen Brennan-Hunter

BACKGROUND—REFINEMENT PROCESS

The Natural Areas Bond Measure (Resolution No. 06-3672B, “For the Purpose of Submitting to the Voters of the Metro Area a General Obligation Bond Indebtedness in the Amount of \$227.4 Million to Fund Natural Area Acquisition and Water Quality Protection,” adopted by the Metro Council March 9, 2006) provided that Metro would undertake a “Refinement Process” to “gather additional information about each individual target area and begin zeroing in on particular parcels that would be valuable to acquire” (Exhibit A to Resolution No. 06-3672B). In addition, the Natural Areas Implementation Work Plan (Resolution No. 07-3766A, “Authorizing the Chief Operating Officer to Purchase Property with Accepted Acquisition Guidelines as Outlined in the Natural Areas Implementation Work Plan,” adopted by the Metro Council on March 1, 2007) authorized the Metro Chief Operating Officer to acquire properties without further Council approval if they have been identified on a Council-approved target area “confidential refinement map.” To implement those directives, the Refinement Plans for each target area contain overall target area objectives and confidential tax-lot specific target area maps identifying priority properties for acquisition, enabling Metro staff to begin the acquisition of property and property rights as detailed in the Natural Areas Implementation Work Plan.

On September 7, 2006, the Metro Council passed Resolution 06-3727 “For the Purpose of Establishing Metro Council Policy Regarding the Acquisition of Rural Agricultural Land Pursuant to the 2006 Natural Areas Acquisition and Water Quality Protection Bond Measure.” This resolution provides direction to staff for land acquisition in target areas with rural agricultural land. The Dairy and McKay Creeks Confluence target area is one such area. During the refinement process representatives from various agricultural interests were consulted. Within this target area, land acquisition will be pursued in accordance with both the letter and the spirit of this resolution. Water quality and habitat protection are the primary focus for land acquisition. When contact is made with landowners, Metro staff will offer to purchase a conservation easement to protect the natural resources identified in this Refinement Plan. If the landowner prefers a fee title sale, Metro will purchase the land and will identify areas which are essential to achieve water quality and habitat protection goals and which are viable for agricultural use without conflict. Metro will offer this agricultural land for sale subject to a conservation easement. At the time habitat restoration commences, potential impacts to adjacent agricultural properties will be addressed.

Additional background information, target area information, a description of the specifics of the refinement process regarding this target area, and the refinement plan’s findings, goals, and objectives are described in further detail in Exhibit A to this resolution, the Dairy and McKay Creeks Confluence Target Area Refinement Plan.

ANALYSIS/INFORMATION

1. Known Opposition

None.

2. Legal Antecedents

Resolution No. 06-3672B, “For the Purpose of Submitting to the Voters of the Metro Area a General Obligation Bond Indebtedness in the Amount of \$227.4 Million to Fund Natural Area Acquisition and Water Quality Protection,” adopted on March 9, 2006.

The voters’ approval of Metro’s 2006 Natural Areas Bond Measure at the general election held on November 7, 2006.

Resolution No. 07-3766A “Authorizing the Chief Operating Officer to Purchase Property With Accepted Acquisition Guidelines as Outlined in the Natural Areas Implementation Work Plan,” adopted by the Metro Council on March 1, 2007, established the Acquisition Parameters and Due Diligence Guidelines for the purchase of properties as part of the 2006 Natural Areas Bond Program.

3. Anticipated Effects

Acquisition of natural area properties in the Dairy and McKay Creeks Confluence target area to achieve the goals and purposes of the 2006 Natural Areas Bond Measure.

4. Budget Impacts

The FY 2007-08 budget includes budgetary authority to purchase \$35 million in natural area lands, with an additional \$15.4 million in contingency, if necessary. It is estimated, based on historical spending patterns, that this authority will be sufficient to cover the anticipated acquisition activity for this fiscal year. Additional unappropriated fund balance (\$64 million) exists for land acquisition in future years, along with the authority to issue up to an additional \$102 million in General Obligation bonds in support of this program.

RECOMMENDED ACTION

Staff recommends adoption of Resolution No. 07-3855.

Summary of Comments from Stakeholder Interviews for Dairy and McKay Creeks Confluence Target Area

Stakeholder(s) Interviewed

April Allison, Tualatin Riverkeepers
Ron Garst, Tualatin Riverkeepers
Richard Meyer, City of Cornelius
Kendra Smith, Clean Water Services
Robert VanderZanden and Dave Vanasche, Washington County Farm Bureau
Brian Wegener, Tualatin Riverkeepers Board Meeting
Sue Marshall, Tualatin Riverkeepers Board Meeting
Sue Beilke, Tualatin Riverkeepers Board Meeting
Ramsay Weit, Tualatin Riverkeepers Board Meeting
Segeni Meingae, Tualatin Riverkeepers Board Meeting
Sue McCloud, Tualatin Riverkeepers Board Meeting
John Driscoll, Tualatin Riverkeepers Board Meeting
Ginger Steele, New Leaf Nursery

Key Themes Discussed

Water Quality

- Environmental interests as a whole favor riparian corridor acquisitions over wetland, flood plain and upland parcels, although the latter are important for water quality in the streams that eventually flow into the Tualatin River.
- General agreement that riparian buffers are a greater benefit for water quality, wildlife habitat and passive recreation than “spot” acquisition of larger parcels for wetland and flood plain mitigation.

Wildlife Habitat

- Some recommend that consultant should look at Goal 5 habitat screen to identify key areas that did not get included in the Regional Goal 5 regulations as these have a high priority for protection. Because Metro went one mile out beyond its UGB, this will cover some of the Target Area, including McKay and Council Creeks, but will not cover the outlying portions of Dairy Creek.
- Some contend that a study of Council Creek west of existing public ownership towards Forest Grove was a “very unique habitat” including that for threatened pond turtles. In addition, the eastern portion of Council Creek towards its confluence with Dairy Creek contains “Old Camus Prairie”, of which only 1% left in the whole Willamette Valley.
- Potential partnerships for habitat protection include Three Rivers Conservancy and the Oregon Department of Fish and Wildlife (ODFW) (via the Oregon Conservation Strategy).

Land Use / Urban / Rural Form

- The overarching theme of representatives of the Washington County Farm Bureau is “to save the agricultural base”. This includes not only the inroads of urbanization into the arable land supply but into the infrastructure – e.g., farm implements, fertilizer sales – that supports agriculture. Even in the best of situations, urban encroachment causes problems – complaints about spraying, farm “odors” and noisy harvesting equipment; competing traffic on farm roads making it difficult to maneuver large farm equipment from field to field.
- The Farm Bureau, supported by 1,000 Friends and the Oregon Department of Agriculture, only supported the Greenspace bond initiative if it would not be at the expense of farmland; the bureau struck a deal with Metro Council to adopt Resolution 06-3727 requiring Metro to:
 - Negotiate conservation easements for stream corridors, leaving uplands in agricultural production. If easements not acceptable, parcel off the corridor and sell, leaving uplands intact.
 - If purchase only option, lease back uplands for farm production.
- Metro should partner with farmers as agricultural properties do abut streams in several instances. When combined with other stakeholders – Clean Water Services (CWS), Port of Portland, Three Rivers Conservancy – this makes for powerful partners. This includes engaging owners even if only seeking riparian corridor easements. Using money in this way, i.e., easements only, would provide a great “bang for the buck”.
- Agricultural interests note that acquisitions along Council and McKay Creeks would help to create natural boundaries for the Regional Urban Growth Boundary for the expansion of Cornelius northward and Hillsboro westward, respectively.
- Some discussion about acquisitions along Council Creek. Farm advocates want to see Council Creek as northern boundary of Cornelius to protect agricultural lands to north. Representative of Cornelius note that city’s boundaries already extend beyond creek and that it is interested in continued acquisitions along the creek to west, to connect up with trails in Forest Grove to Fernhill Wetlands, and to the east to Dairy Creek and beyond.

Relationship to 1995 Bond Measure

- Some note that it was a “lost opportunity” that the Target Area does not extend into the head waters, which lie significantly to the north, of the two creeks as real water quality/habitat preservation needs to start there.
- There is a single parcel on the south side of the Jackson Bottom complex that was not acquired in the mid-90s; CWS and others are interested in this parcel to extend trails and protect the flood plain. This acquisition doesn’t mean automatically that farming could not continue there.

Miscellaneous Comments

- One stakeholder identified a Port of Portland mitigation site at the confluence of Dairy and Council Creeks; the latter is working with CWS to develop restoration opportunities. The Port also looking for additional sites in Washington County for further mitigation related to expansion plans at Hillsboro Airport.
- There are several properties on either side of Dairy Creek in the vicinity of the Port mitigation site that may be an opportunity for obtaining conservation easements along the creek corridors to provide connectivity.

- One participant supports the creation of a hiking trail along Dairy Creek ideally from its confluence with McKay Creek all the way to Vernonia. However, she recognizes that if there are limited funds to spend on acquisitions in this target area, it is best to extend northward and westward of the confluence of the two creeks, to create continuous wildlife and hiking trails.
- Others supported acquisitions up the west side of McKay Creek along its boundary with the City of Hillsboro with connections northward across Highway 26, noting that the creek system in this part of Washington County is a “a regional jewel”.

QUESTIONNAIRE

TARGET AREA: DAIRY AND MCKAY CREEKS CONFLUENCE

In November 2006 voters directed the Metro Council to extend a regionwide program and acquire between 3,500 and 4,500 acres of additional natural areas to protect water quality and fish and wildlife habitat and to provide future generations opportunities for greater access to nature. Now it's time for the Metro Council to refine priorities in the 27 regional natural areas and trail corridors targeted for acquisition. The 1995 acreage goal for this target area was 335 and Metro has acquired 493 acres to date. The 2006 program will provide additional funding for protection goals in this target area.

The Metro Council wants your ideas and input. We've been talking with scientists, land-use experts, groups and individuals who have special knowledge about the natural resource values and community visions for these areas. With this information Metro has begun to identify the potential strategies and opportunities that will achieve the best results. Now we need to know: Do we have it right? What have we missed? What is most important to you?

2006 NATURAL AREAS BOND DESCRIPTION FOR THIS TARGET AREA

The creeks converge at the interface of farmland and the urban growth boundary, forming broad wetlands accessible to a rapidly urbanizing area. Protecting the riparian areas and associated wetlands in the confluence area will contribute significantly to improved water quality in these major tributaries of the Tualatin River.

QUESTIONS

1. **The following priorities were identified in the Dairy and McKay Creeks Confluence target area based on scientific information about benefits to water quality, habitat diversity, wildlife connectivity and/or restoration potential and from information provided by key stakeholders in the area. Rank in order of importance to you from 1 to 6, with 1 being the most important and 6 being the least important.**

- _____ Protecting lands and associated wetlands along Dairy Creek from its confluence with McKay Creek and extending northward to NW Susbauer Road. **(Map area A)**
- _____ Protecting the creekside, wetlands and upland forested areas in and around the Camp Ireland Scout Camp to provide benefits to wildlife. **(Map area B)**
- _____ Protecting potential trail and habitat corridors along Council Creek from its confluence with Dairy Creek west to other protected public lands. **(Map area C)**
- _____ Securing lands along the west side of Council Creek to Martin Road to provide habitat corridors, a potential trail corridor and a buffer to urban development. **(Map area D)**
- _____ Protecting the lands along McKay Creek from its confluence with Dairy Creek northward towards the Camp Ireland Scout Camp primarily to buffer the area from urban development. **(Map area E)**
- _____ Protecting the lands along Dairy Creek north of Jackson Bottom to the confluence of Dairy and McKay creeks, with a focus on protecting the natural corridors along the creeks. **(Map area F)**

2. In general, what should be emphasized in the Dairy and McKay Creeks Confluence target area? Rank in order of importance to you from 1 to 4, with 1 being the most important and 4 being the least important.

- _____ Preserving lands along creeks and associated wetlands to protect water quality and wildlife habitat.
- _____ Protecting floodplains and wetlands for water quality and wildlife benefits.
- _____ Providing a natural buffer between urban development and farmland in the area.
- _____ Providing access to nature for people along greenway trail corridors.

3. Are there other priorities that the Metro Council should consider in the Dairy and McKay Creeks Confluence target area? Please be specific.

4. In what ways can Metro's Natural Areas Program be compatible with agricultural uses in the Dairy and McKay Creeks Confluence target area?

5. Do you have suggestions about partnerships Metro should pursue or other innovative ways to leverage regional funding and enhance this natural area?

6. Are you interested in participating in Metro's Natural Areas program by selling or donating your property or selling or donating a conservation easement on your property?

- Yes No If yes, please be sure to provide your contact information below.

7. Do you have any other comments about this target area?

Please add my name to the Dairy and McKay Creeks Confluence target area mailing list for future information, public meetings and events.

Name _____

Address _____

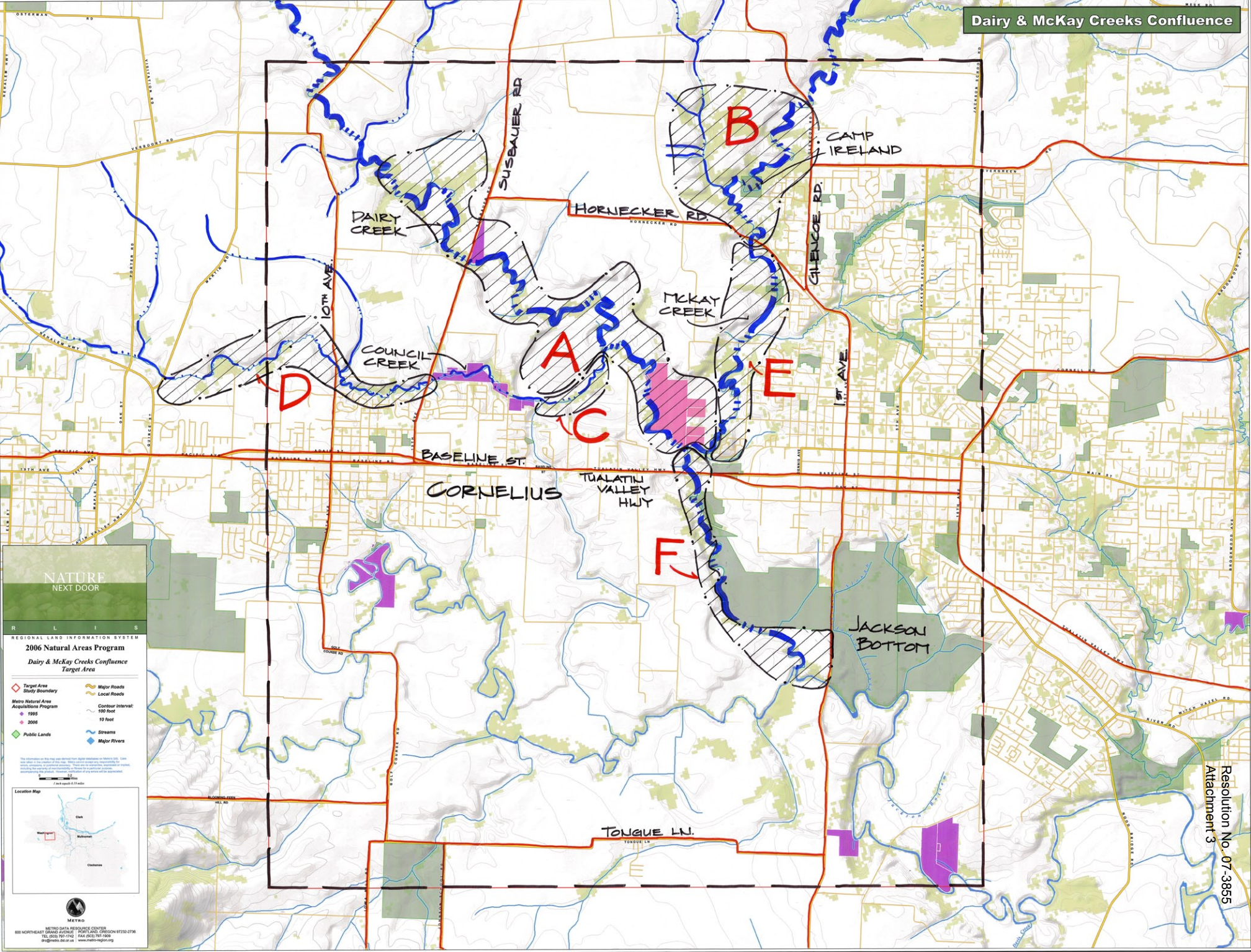
City/State/Zip _____

Phone _____

E-mail _____

**You may complete this questionnaire online at
www.metro-region.org/naturalareas**

or mail it to Metro at
600 NE Grand Avenue, Portland, OR 97232
(503) 797-1741



NATURE NEXT DOOR

REGIONAL LAND INFORMATION SYSTEM
2006 Natural Areas Program
Dairy & McKay Creeks Confluence
Target Area

- Target Area Study Boundary
- Metro Natural Area Acquisitions Program
 - 1995
 - 2006
- Public Lands
- Major Roads
- Local Roads
- Contour Interval:
 - 100 foot
 - 10 foot
- Streams
- Major Rivers

The information on this map was derived from digital data from the Metro GIS. Land use data was derived from the Metro GIS. Metro GIS is not responsible for any errors or omissions in this map. Metro GIS is not responsible for any errors or omissions in this map.



Dairy and McKay Creeks Confluence Survey Results

1. The following priorities were identified in the Dairy and McKay Creeks Confluence target area based on scientific information about benefits to water quality, habitat diversity, wildlife connectivity and/or restoration potential and from information provided by key stakeholders in the area. Rank in order of importance to you.

	most important					least important	Rating Average	Response Count
Protecting lands and associated wetlands along Dairy Creek from its confluence with McKay Creek and extending northward to NW Susbauer Road. (Map area A)	15.4% (2)	46.2% (6)	7.7% (1)	7.7% (1)	15.4% (2)	7.7% (1)	2.85	13
Protecting the creekside, wetlands and upland forested areas in and around the Camp Ireland Scout Camp to provide benefits to wildlife. (Map area B)	23.1% (3)	7.7% (1)	0.0% (0)	30.8% (4)	15.4% (2)	23.1% (3)	3.77	13
Protecting potential trail and habitat corridors along Council Creek from its confluence with Dairy Creek west to other protected public lands. (Map area C)	26.7% (4)	26.7% (4)	13.3% (2)	20.0% (3)	13.3% (2)	0.0% (0)	2.67	15
Securing lands along the west side of Council Creek to Martin Road to provide habitat corridors, a potential trail corridor and a buffer to urban development. (Map area D)	26.7% (4)	20.0% (3)	0.0% (0)	13.3% (2)	26.7% (4)	13.3% (2)	3.33	15
Protecting the lands along McKay Creek from its confluence with Dairy Creek northward towards the Camp Ireland Scout Camp primarily to buffer the area from urban development. (Map area E)	7.7% (1)	7.7% (1)	53.8% (7)	7.7% (1)	15.4% (2)	7.7% (1)	3.38	13
Protecting the lands along Dairy Creek north of Jackson Bottom to the confluence of Dairy and McKay creeks, with a focus on protecting the natural corridors along the creek. (Map area F)	6.7% (1)	0.0% (0)	26.7% (4)	20.0% (3)	6.7% (1)	40.0% (6)	4.40	15
	<i>answered question</i>							15
	<i>skipped question</i>							0

2. In general, what should be emphasized in the Dairy and McKay Creeks Confluence target area? Rank in order of importance to you.

	most important			least important	Rating Average	Response Count
Preserving lands along creeks and associated wetlands to protect water quality and wildlife habitat.	58.3% (7)	8.3% (1)	8.3% (1)	25.0% (3)	2.00	12
Protecting floodplains and wetlands for water quality and wildlife benefits.	0.0% (0)	33.3% (4)	58.3% (7)	8.3% (1)	2.75	12
Providing a natural buffer between urban development and farmland in the area.	25.0% (3)	8.3% (1)	16.7% (2)	50.0% (6)	2.92	12
Providing access to nature for people along greenway trail corridors.	16.7% (2)	50.0% (6)	16.7% (2)	16.7% (2)	2.33	12
	<i>answered question</i>					12
	<i>skipped question</i>					3

3. Are there other priorities that the Metro Council should consider in Dairy and McKay Creek target area? Please be specific.

Signs to direct use of public.
 Education in regard to the benefits of natural areas to farmers. How do these natural areas provide more/better water for them, more opportunity for pollinators.

4. Are there other priorities that the Metro Council should consider in Dairy and McKay Creek target area? Please be specific.

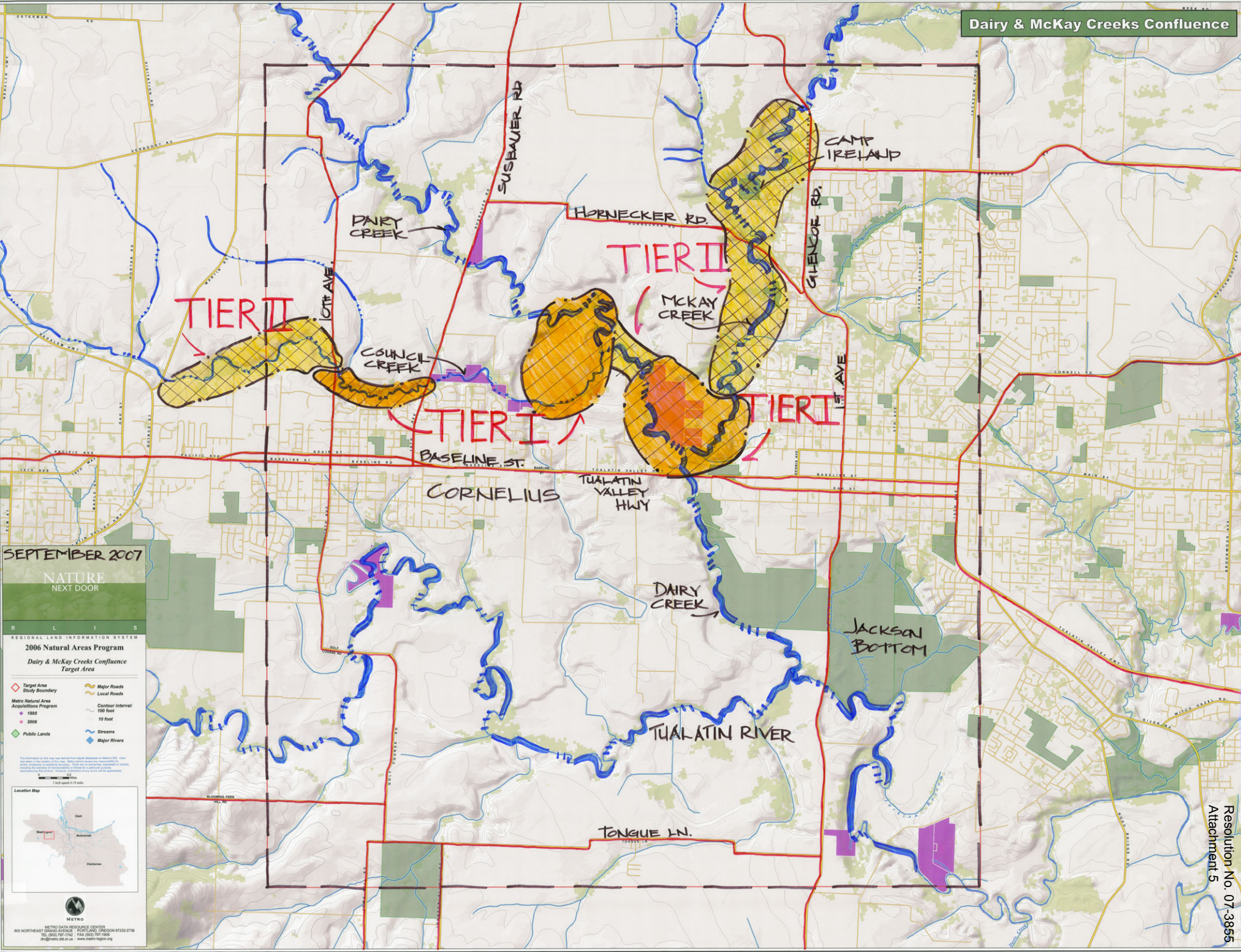
Make sure that the old cemetery at beginning of Speisschaert Rd be protected.
 Keeping public off adjacent private property. Safety for public use.
 All of these areas are vital for watershed health and wildlife habitat. Save this system - connect the whole. There isn't much time.

5. Do you have suggestions about partnerships Metro should pursue or other innovative ways to leverage regional funding and enhance this natural area? If so, please specify.

Provide assistance to prospective sellers.
 Some acreage owners might be willing to donate land or money to help, but don't send fast talking folks with suits and ties to talk with them. Respect their knowledge of land as you try to enhance it.

6. Do you have any other comments about this target area? If so, please specify.

Areas A and B are not threatened by development - not helpful to regional trail system of land use trails.
 Regions B & E have increasing development, roads, main avenue into Hillsboro from HWY 26. It is susceptible to impact from all this.



SEPTEMBER 2007
NATURE
NEXT DOOR

REGIONAL LAND INFORMATION SYSTEM
2006 Natural Areas Program
Dairy & McKay Creeks Confluence
Target Area

- Target Area Study Boundary
- Metro Natural Area Acquisitions Program
 - 1996
 - 2006
- Public Lands
- Major Roads
- Local Roads
- Contour Interval:
 - 100 foot
 - 10 foot
- Streams
- Major Rivers



METRO
METRO DATA RESOURCE CENTER
600 NORTHEAST GRAND AVENUE PORTLAND, OREGON 97232-2736
TEL: 503 787-1142 FAX: 503 787-1500
dr@metro.or.us www.metro-region.org