

BEFORE THE METRO COUNCIL

APPROVING THE NATURAL AREAS ACQUISITION
REFINEMENT PLAN FOR THE STAFFORD BASIN
TARGET AREA

RESOLUTION NO. 07-3839

Introduced by Chief Operating Officer
Michael J. Jordan, with the
concurrence of Council President
David Bragdon

WHEREAS, on March 9, 2006, the Metro Council adopted Resolution No. 06-3672B “For the Purpose of Submitting to the Voters of the Metro Area a General Obligation Bond Indebtedness in the Amount of \$227.4 Million to Fund Natural Area Acquisition and Water Quality Protection,” recommending submission for voter approval a general obligation bond to preserve and protect natural areas, clean water, and fish and wildlife (the “2006 Natural Areas Bond Measure” or “Measure”); and

WHEREAS, at the election held on November 7, 2006, the voters approved Ballot Measure 26-80, the 2006 Natural Areas Bond Measure; and

WHEREAS, the Stafford Basin Target Area was identified in the Measure as one of 27 regional target areas for land acquisition; and

WHEREAS, as provided in the 2006 Natural Areas Bond Measure, Metro has undertaken a public refinement process to establish specific acquisition strategies, goals, objectives, and a confidential tax-lot specific acquisition target area map for each of the 27 target areas; and

WHEREAS, Metro’s refinement process included the compilation of available information about each target area; biological field visits and expert analysis of maps; interviews with key stakeholders including natural resource experts, property owners, representatives from state and local government agencies, and advocates from water quality, fish, and wildlife preservation interest groups; and eight public open houses at sites throughout the region and a “virtual” open house available via the internet, at which draft refinement plans were made available for public review and participants could share their target area priorities either in-person or electronically; and

WHEREAS, on March 1, 2007, the Council approved Resolution No. 07-3766A, “Authorizing the Chief Operating Officer to Purchase Property with Accepted Acquisition Guidelines as Outlined in the Natural Areas Implementation Work Plan,” authorizing the Metro Chief Operating Officer to acquire properties identified on a Council-approved target area “confidential refinement map;” and

WHEREAS, the Council has reviewed the draft refinement plans and considered information it has received from citizens, scientists, advocates, and state and local governments; now, therefore

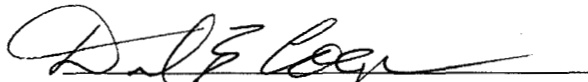
BE IT RESOLVED that the Metro Council adopts the Stafford Basin Refinement Plan attached hereto as Exhibit A, including the confidential tax-lot specific map reviewed by the Council in Executive Session on September 4, 2007, and signed by Council President David Bragdon, and hereby authorizes the Chief Operating Officer to acquire properties in the Stafford Basin Target Area consistent with the Council-approved Acquisition Parameters and Due Diligence Guidelines of the Natural Areas Implementation Work Plan.

ADOPTED by the Metro Council this 27 day of September 2007.



David Bragdon, Council President

Approved as to Form:


Daniel B. Cooper, Metro Attorney

**2006 NATURAL AREAS ACQUISITION PROGRAM
STAFFORD BASIN TARGET AREA REFINEMENT PLAN**

Background

The 2006 Natural Areas bond measure stated:

Connecting existing public lands in the Lake Oswego/West Linn/ Tualatin area along tributary creeks to the Tualatin River will enhance water quality protection and secure diverse natural areas for local residents.

Target Area Description

The Stafford Basin is a triangular shaped area located south of Lake Oswego, west of West Linn and east of Tualatin. Much of the Stafford Basin includes working farms and housing developments. The area is bisected by the Tualatin River and contains tributaries, riparian areas and floodplains.

A biological assessment conducted for this target area states that lands along the creeks, floodplains and associated wetlands of the Tualatin River are important for protecting water quality, providing flood storage, and supporting large numbers of waterfowl and migrating neo-tropical birds.

Wilson Creek, Pecan Creek and Athey Creeks are important waterways in the area. In particular, Pecan and Wilson Creeks have excellent habitat restoration potential.

Refinement Process

During the refinement process, Metro staff compiled available information about the Stafford Basin target area, analyzed maps and conducted biological field visits. Individuals were interviewed representing various government agencies, property owners, interested friends groups and natural resource experts. The key concerns expressed during the interviews are summarized in Attachment 1.

A public open house to discuss the proposed Refinement Plan was held on June 18, 2007 at Athey Creek Middle School, one of eight such open houses held throughout the region. Notices of the open houses were mailed to area residents and other interested citizens. Metro also conducted a “virtual” open house by making target area informational materials, including maps, available “online” via the internet and allowing participants to share their target area priorities electronically. A total of 527 people attended the regional open houses, and the online open house had 6,363 visits from 3,419 unique visitors. More than 700 target area surveys were submitted either in person or online. Thirty-eight people completed the Stafford Basin survey. A copy of the survey questionnaire is included as Attachment 2. The map associated with the questionnaire for this target area is included as Attachment 3, and complete survey results are included as Attachment 4.

Findings

- The Stafford Basin target area is a regionally significant natural area due to its fish, wildlife, recreation opportunities and water quality values.
- The biological assessment performed for this target area confirms lands along the creeks, floodplains and associated wetlands of the Tualatin River are important to protecting water quality, providing flood storage and supporting large numbers of waterfowl and migrating birds.
- Wilson Creek has excellent wildlife corridor connectivity with large areas of intact habitat supporting diverse plants and animals. Pecan Creek has good connectivity but has more road crossings and encroaching development.

- Protecting water quality in the tributaries and maintaining a contiguous open space corridor that connects publicly-owned properties along Wilson Creek has support among a large number of stakeholders.
- The south bank of the Tualatin River from Fields Creek to Willamette Park has excellent connectivity potential due to large, diverse habitat areas.
- Fields Creek has unique high quality forested habitat supporting diverse wildlife and connectivity.
- The City of Lake Oswego, Three Rivers Land Conservancy and other partners have developed a Stafford Basin Path and Trail Plan that identifies at least 15 miles of new trails connecting parks and natural areas in Lake Oswego, Tualatin and West Linn.
- The Stafford Basin Path and Trail Plan identifies a “Rivers to Rivers” trail that connects the Tualatin River with the Willamette River as part of the regional trails network.
- Plans are also underway to develop an additional mile of trail between Luscher Farms and West Linn along the north side of Rosemont Blvd.
- Thirty-eight people completed questionnaires about the Stafford Basin. In rank order, the public priorities were:
 1. *Map area D* – Protect lands along the south bank of the Tualatin River from Fields Creek to Willamette Park for wildlife connectivity.
 2. *Green dash line E* – Protect lands for a future trail connecting the Tualatin River to existing or potential parks, natural areas and greenways.
 3. *Map area C* – Protect lands along Wilson Creek to support a diversity of plants and animals to enhance wildlife connectivity.
 4. *Map area A* – Protect lands along Fields Creek to support a diversity of plants and animals and enhance wildlife connectivity.
 5. *Map area B* – Protect lands along Pecan Creek to support a diversity of plants and animals to enhance wildlife connectivity.

Goal

Protect lands in the Stafford basin along tributary creeks to the Tualatin River to enhance water quality protection, provide floodplain storage, secure diverse natural areas for local residents and provide regional trail connections.

Objectives

A target area map showing the tiered objectives described below is included as Attachment 5.

Tier I Objectives

- Preserve lands along Wilson Creek to link existing protected lands and to create corridors for wildlife habitat and future trail use.
- Protect lands along Pecan Creek to link existing protected lands and to create corridors for wildlife habitat and future trail use.

Tier II Objective

- Protect lands along the south bank of the Tualatin River from Fields Creek to Willamette Park for wildlife connectivity.

Partnership Objective

- Work with Three Rivers Conservancy, City of Lake Oswego, City of West Linn, City of Tualatin, and other partners to leverage regional bond funds.

STAFF REPORT

IN CONSIDERATION OF RESOLUTION NO. 07-3839, APPROVING THE NATURAL AREAS ACQUISITION REFINEMENT PLAN FOR THE STAFFORD BASIN TARGET AREA

Date: September 27, 2007

Prepared by: Jim Desmond
Kathleen Brennan-Hunter

BACKGROUND—REFINEMENT PROCESS

The Natural Areas Bond Measure (Resolution No. 06-3672B, “For the Purpose of Submitting to the Voters of the Metro Area a General Obligation Bond Indebtedness in the Amount of \$227.4 Million to Fund Natural Area Acquisition and Water Quality Protection,” adopted by the Metro Council March 9, 2006) provided that Metro would undertake a “Refinement Process” to “gather additional information about each individual target area and begin zeroing in on particular parcels that would be valuable to acquire” (Exhibit A to Resolution No. 06-3672B). In addition, the Natural Areas Implementation Work Plan (Resolution No. 07-3766A, “Authorizing the Chief Operating Officer to Purchase Property with Accepted Acquisition Guidelines as Outlined in the Natural Areas Implementation Work Plan,” adopted by the Metro Council on March 1, 2007) authorized the Metro Chief Operating Officer to acquire properties without further Council approval if they have been identified on a Council-approved target area “confidential refinement map.” To implement those directives, the Refinement Plans for each target area contain overall target area objectives and confidential tax-lot specific target area maps identifying priority properties for acquisition, enabling Metro staff to begin the acquisition of property and property rights as detailed in the Natural Areas Implementation Work Plan.

Additional background information, target area information, a description of the specifics of the refinement process regarding this target area, and the refinement plan’s findings, goals, and objectives are described in further detail in Exhibit A to this resolution, the Stafford Basin Target Area Refinement Plan.

ANALYSIS/INFORMATION

1. **Known Opposition**

None.

2. **Legal Antecedents**

Resolution No. 06-3672B, “For the Purpose of Submitting to the Voters of the Metro Area a General Obligation Bond Indebtedness in the Amount of \$227.4 Million to Fund Natural Area Acquisition and Water Quality Protection,” adopted on March 9, 2006.

The voters’ approval of Metro’s 2006 Natural Areas Bond Measure at the general election held on November 7, 2006.

Resolution No. 07-3766A “Authorizing the Chief Operating Officer to Purchase Property With Accepted Acquisition Guidelines as Outlined in the Natural Areas Implementation Work Plan,” adopted by the Metro Council on March 1, 2007, established the Acquisition Parameters and Due Diligence Guidelines for the purchase of properties as part of the 2006 Natural Areas Bond Program.

3. **Anticipated Effects**

Acquisition of natural area properties in the Stafford Basin target area to achieve the goals and purposes of the 2006 Natural Areas Bond Measure.

4. **Budget Impacts**

The FY 2007-08 budget includes budgetary authority to purchase \$35 million in natural area lands, with an additional \$15.4 million in contingency, if necessary. It is estimated, based on historical spending patterns, that this authority will be sufficient to cover the anticipated acquisition activity for this fiscal year. Additional unappropriated fund balance (\$64 million) exists for land acquisition in future years, along with the authority to issue up to an additional \$102 million in General Obligation bonds in support of this program.

RECOMMENDED ACTION

Staff recommends adoption of Resolution No. 07-3839.

Summary of Comments from Stakeholder Interviews for Stafford Basin Target Area

Stakeholder(s) Interviewed

Kim Gilmer, City of Lake Oswego Parks Director
Doug Rux, Tualatin Economic Development director
Kendra Smith, Water Resources Program Manager, Clean Water Services
Paul Hennon, City of Tualatin Parks and Recreation Director
Ken Worcester, City of West Linn Parks and Recreation Director
Jayne Cronlund, Three Rivers Land Conservancy
Michelle Healy, North Clackamas Parks District
Dan Zinzer, Clackamas County Parks
Scott Premble, Clackamas County Planning
Carol Yamada, Stafford Hamlet
Molly Ellis, Stafford Hamlet
John English, Stafford Hamlet
Dave Adams, Stafford Hamlet

Key Themes Discussed

Water Quality

- Tualatin River is water quality limited for multiple parameters
- Protect and restore riparian habitat and forested bluffs along Tualatin River to protect water quality.
- Preserve other forested basins along Tualatin River

Wildlife Habitat

- Wilson Creek basin has relatively- intact forested habitat
- Significant riparian habitat exists along Tualatin River and adjacent uplands
- Lower Tualatin River corridor provides salmon habitat.

Scenic Resources

- Views are important in Stafford Basin.
- Views looking west across the Stafford Basin from Salamo and Rosemont roads.
- Great views from inside the basin looking south over the Tualatin River to Pete's Mountain.

Connections to existing parks, trails, public open space

- Three Rivers is working with local jurisdictions to develop acquisition and protection strategy
- River to River Trail through Wilson Creek basin
- Fill in the gaps on the Tualatin River Regional Trail from the confluence with the Willamette River to the Tualatin River National Wildlife Refuge.

Miscellaneous Comments

- The group held some discussion about Measure 37 claims and development plans/pressure on parcels south of Cooper Mountain Nature Park.
- Acquisition of in-holding was mentioned as an obvious top priority by most stakeholders.
- Quarry site to west was noted by several stakeholders as having open space potential.
- Several stakeholders expressed the opinion that money will go farther for creation of linkages/corridors rather than large parcels.

Key Partners

- The cities of Tualatin, Lake Oswego and West Linn
- Three Rivers Land Conservancy

Key Priorities

- Protect Wilson Creek and other intact watersheds
- Tualatin River Regional Trail and habitat system
- River to River trail through Wilson Creek corridor
- Protect forested hillsides on south side of lower Tualatin River

Miscellaneous Comments

- Numerous Measure 37 claims in the Stafford basin, especially north of I-205
- Oak Savanna off Salamo Road has a strong constituency for preservation.
- Stafford Basin should be protected from overdevelopment.

QUESTIONNAIRE

TARGET AREA: STAFFORD BASIN

In November 2006 voters directed the Metro Council to extend a regionwide program and acquire between 3,500 and 4,500 acres of additional natural areas to protect water quality and fish and wildlife habitat and to provide future generations opportunities for greater access to nature. Now it's time for the Metro Council to refine priorities in the 27 regional natural areas and trail corridors targeted for acquisition. Initial estimates are that a minimum of 200 acres of land would be protected within this target area.

The Metro Council wants your ideas and input. We've been talking with scientists, land-use experts, groups and individuals who have special knowledge about the natural resource values and community visions for these areas. With this information Metro has begun to identify the potential strategies and opportunities that will achieve the best results. Now we need to know: Do we have it right? What have we missed? What is most important to you?

2006 NATURAL AREAS BOND DESCRIPTION FOR THIS TARGET AREA

Connecting existing public lands in the Lake Oswego/West Linn/Tualatin area along tributary creeks to the Tualatin River will enhance water quality protection and secure diverse natural areas for local residents.

QUESTIONS

1. **The following priorities were identified in the Stafford Basin target area based on scientific information about benefits to water quality, habitat diversity, wildlife connectivity and/or restoration potential and from information provided by key stakeholders in the area. Rank in order of importance to you from 1 to 5, with 1 being the most important and 5 being the least important.**

- _____ Protecting lands along Fields Creek to support a diversity of plants and animals and enhance wildlife connectivity. **(Map area A)**
- _____ Protecting lands along Pecan Creek to support a diversity of plants and animals to enhance wildlife connectivity. **(Map area B)**
- _____ Protecting lands along Wilson Creek to support a diversity of plants and animals to enhance wildlife connectivity. **(Map area C)**
- _____ Protecting lands along the south bank of the Tualatin River from Fields Creek to Willamette Park for wildlife connectivity. **(Map area D)**
- _____ Protecting lands for a future trail connecting the Tualatin River to existing or potential parks, natural areas and greenways. **(Green dash line E)**

2. **In general, what should be emphasized in the Stafford Basin target area? Rank in order of importance to you from 1 to 6, with 1 being the most important and 6 being the least important.**

- _____ Preserving and restoring riparian corridors for water quality and habitat protection.
- _____ Protecting wetlands, riparian corridors and floodplains.
- _____ Protecting smaller creeks and streams and their tributaries for water quality.
- _____ Creating trails and pathways for walking, hiking and biking.
- _____ Providing public access and wildlife watching opportunities.
- _____ Connecting publicly-owned lands along the Tualatin River.

**3. Are there other priorities that the Metro Council should consider in the Stafford Basin target area?
Please be specific.**

4. Do you have suggestions about partnerships Metro should pursue or other innovative ways to leverage regional funding and enhance this natural area?

5. Are you interested in participating in Metro's Natural Areas program by selling or donating your property or selling or donating a conservation easement on your property?

Yes No If yes, please be sure to provide your contact information below.

6. Do you have any other comments about this target area?

Please add my name to the Stafford Basin target area mailing list for future information, public meetings and events.

Name _____

Address _____

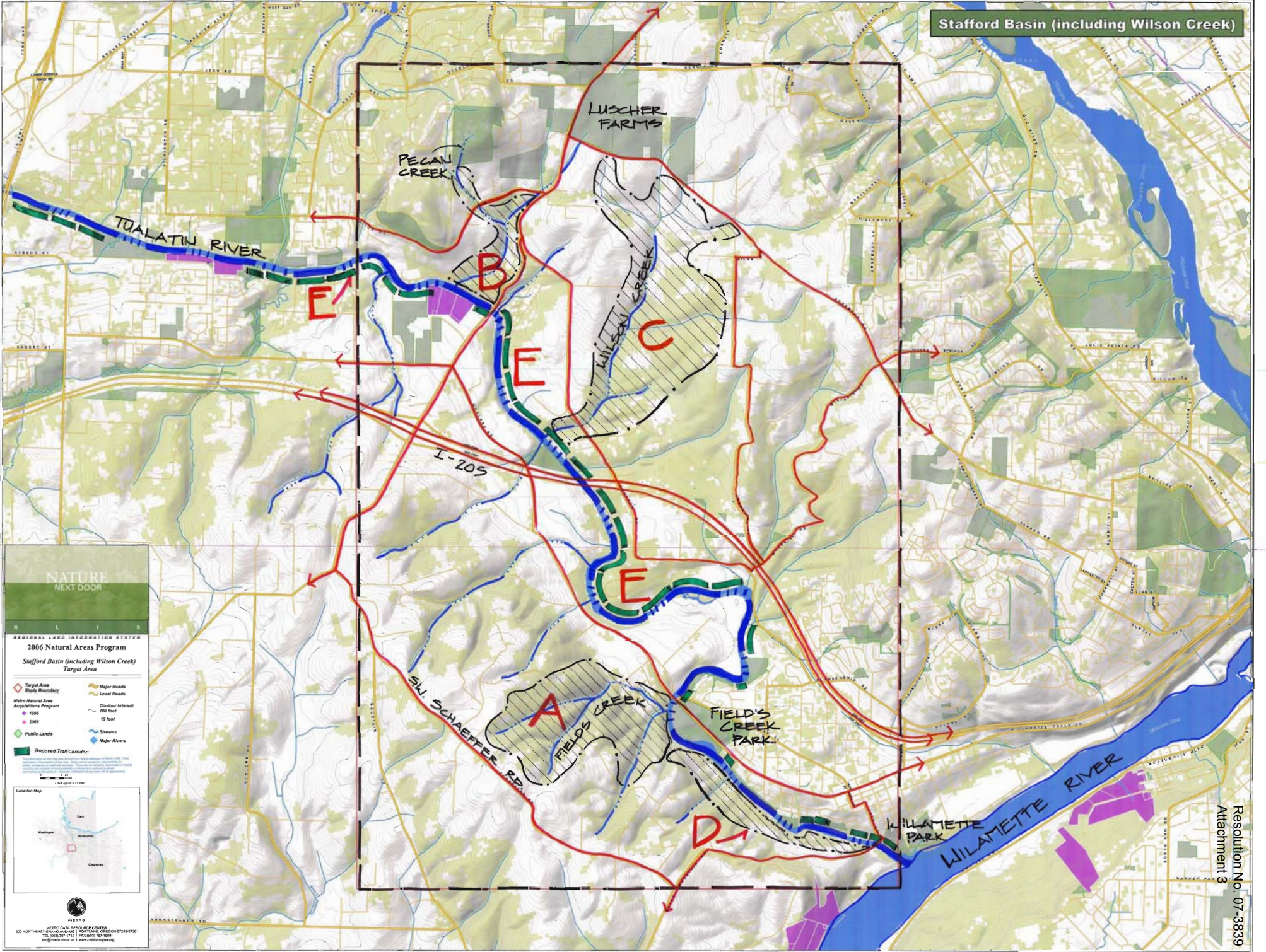
City/State/Zip _____

Phone _____

E-mail _____

**You may complete this questionnaire online at
www.metro-region.org/naturalareas**

or mail it to Metro at
600 NE Grand Avenue, Portland, OR 97232
(503) 797-1741



NATURE NEXT DOOR

REGIONAL LAND INFORMATION SYSTEM

2006 Natural Areas Program
Stafford Basin (including Wilson Creek)
Target Area

- Target Area Study Boundary
- Major Roads
- Local Roads
- Metro Natural Area Acquisitions Program
- 1990
- 2006
- Public Lands
- Proposed Trail Corridor
- Contour Interval: 100 foot
- 10 foot
- Streams
- Major Rivers

Scale: 0 100 200 Feet

Location Map

METRO METRO DATA RESOURCE CENTER
800 NORTHWEST GRAND AVENUE PORTLAND, OREGON 97208-0736
TEL: 503.787.7141 FAX: 503.787.1050
www.metro-oregon.org

Stafford Basin Survey Results

1. The following priorities were identified in the Stafford Basin target area based on scientific information about benefits to water quality, habitat diversity, wildlife connectivity and/or restoration potential and from information provided by key stakeholders in the areas. Rank in order of importance to you.

	most important				least important	Rating Average	Response Count
Protecting lands along Fields Creek to support a diversity of plants and animals and enhance wildlife connectivity. (Map area A)	14.7% (5)	17.6% (6)	20.6% (7)	26.5% (9)	20.6% (7)	3.21	34
Protecting lands along Pecan Creek to support a diversity of plants and animals to enhance wildlife connectivity. (Map area B)	3.1% (1)	18.8% (6)	21.9% (7)	31.3% (10)	25.0% (8)	3.56	32
Protecting lands along Wilson Creek to support a diversity of plants and animals to enhance wildlife connectivity. (Map area C)	22.9% (8)	2.9% (1)	34.3% (12)	22.9% (8)	17.1% (6)	3.09	35
Protecting lands along the south bank of the Tualatin River from Fields Creek to Willamette Park for wildlife connectivity. (Map area D)	34.3% (12)	37.1% (13)	8.6% (3)	8.6% (3)	11.4% (4)	2.26	35
Protecting lands for a future trail connecting the Tualatin River to existing or potential parks, natural areas and greenways. (Green dash line E)	35.3% (12)	26.5% (9)	11.8% (4)	5.9% (2)	20.6% (7)	2.50	34
	<i>answered question</i>						38
	<i>skipped question</i>						5

2. In general, what should be emphasized in the Stafford Basin target area? Rank in order of importance to you.

	most important					least important	Rating Average	Response Count
Preserving and restoring riparian corridors for water quality and habitat protection.	28.9% (11)	28.9% (11)	10.5% (4)	18.4% (7)	5.3% (2)	7.9% (3)	2.66	38
Protecting wetlands, riparian corridors and floodplains.	15.8% (6)	26.3% (10)	15.8% (6)	5.3% (2)	28.9% (11)	7.9% (3)	3.29	38
Protecting smaller creeks and streams and their tributaries for water quality.	18.4% (7)	10.5% (4)	31.6% (12)	18.4% (7)	5.3% (2)	15.8% (6)	3.29	38
Creating trails and pathways for walking, hiking and biking.	26.3% (10)	18.4% (7)	10.5% (4)	21.1% (8)	13.2% (5)	10.5% (4)	3.08	38
Providing public access and wildlife watching opportunities.	2.6% (1)	12.8% (5)	17.9% (7)	30.8% (12)	23.1% (9)	12.8% (5)	3.97	39
Connecting publicly-owned lands along the Tualatin River.	12.8% (5)	7.7% (3)	17.9% (7)	5.1% (2)	20.5% (8)	35.9% (14)	4.21	39
	<i>answered question</i>							40
	<i>skipped question</i>							3

3. Are there other priorities that the Metro Council should consider in the Stafford Basin target area? Please be specific.

Future development.
Make "open" corridors!
Water usage.
Corridors and reserves between cities. Also I-205 is a designated scenic highway in this segment.
None at this time.
Zoning is a big issue--need to keep population density down for many reasons.
Stafford Basin should be protected from overdevelopment. It provides a large area that can still be kept in a largely natural state. The steep slopes make it less than ideal for farming or residential development. Its best use is a natural green space.
Save Portland's ONLY oak savanna!!! Oak savanna only one north of Silverton. No other savanna in Metro Portland. 1. Willing Seller 2. Wildlife Corridor 3. Only one percent of Oregon oak savanna still exist 4. Educational 5. Easy 1-205 access.
The Stafford Basin is a true asset for Oregonians. Small farms such as horses, cattle and nurseries are the backbone of Stafford Basin. Save the small farms from developers, who don't care about preserving good land and only want to make \$.
Save riparian areas and farm areas.
When looking at connectivity along waterways, one needs to be careful to not disturb prime wildlife habitat. For example, especially on Johnson Rd along the Tualatin, this is prime migration habitat.
Trail connecting Luscher to West Linn. Get Wilson Creek (River to river) trail marked on map.

Fund local projects #91-Rosemont Road trail and projects #101 (Stafford Basin Natural Area) and 102 (Stafford Trail). An improved or new pedestrian bicycle bridge is needed near Stafford Rd (or on existing bridge) at the Tualatin River.

Stay north of 1-205. Focus on land that will likely be brought into the UGB soon, making that land more valuable in the short run.

Focus on land north of 205--this area will be coming into the UGB but can still be purchased reasonably--once brought into the UGB the value will go up.

No overnight camping areas---day use only.

Protecting South Bank Tualatin River north of 205 should be a focus.

20 acre parcel known as Tonley East; old growth oak savanna in West Linn on Salamo Rd.

Lake Oswego-West Linn Path connection along Rosemont.

Twenty acres in West Linn off the 10th Street corridor and on Salamo Rd. Contains old savannah oaks (200+ year old) full of wildlife and several rare plants.

Oak Savannah at Tannler Rd and Blankenship in West Linn.

Oak Savannah at Tamler and Blankenship, West Linn.

Property on Tamler St. at the 10th St. area in West Linn contains some of the last oak savannah in the entire metro area. West Linn is low on funds but wants this area preserved as a park.

Provide linkage to existing or proposed regional trail networks.

Trail connections are important for people and wildlife. Mount information kiosks along the way for public education and understanding as those factors lead to future bonds and more protection.

4. Do you have suggestions about partnerships Metro should pursue or other innovative ways to leverage regional funding and enhance this natural area? If so, please specify.

It should prioritize it.

Nature conserving.

None at this time.

Work closely with Lake Oswego, West Linn, and Three Rivers Land Conservancy.

Partnerships: Nature Conservancy of Oregon, Trust for Public Land. What about using the land for the new environmental friendly movement, that is, carbon ranch/farms. Get the state or county to back/pay individuals to grow trees on their property. This would help reduce the "carbon impact" in the Stafford Basin/Metro area. Carbon ranch/farms - next great movement in U.S.? Oregon? I would say Oregon could lead the way in this movement.

Work with local non-profits.

Work with private non-profits. Often people are "leery" of government but may work with non-profit.

Designated jogging park---no bicycles, horses or motorized vehicles.

Trust for Public Land.

20 acre parcels like Tanler East could be used to board goats which would be used to control vegetation in county parks and serve as petting zoo.

Connect with Stafford Hamlet to open dialog.

Work with county and cities and willing owners, local activists.

Does Bob Pamplin have any interest in donating? Obviously Ross Island is an issue, but maybe he would be willing to look at another area to fund. Clackamas Co. Commissioners are interested.

Joint venture with private-sector funding (Three Rivers Land Conservancy, Nature Conservancy, etc) to maximize

spending and attract tax deductibility for some generous owners willing to accept less than market value.

Have Metro, West Linn, Tualatin and L.O. work together to connect through Stafford Basin from the river north to the parks and trails there and also to the south of the Tualatin to the Pete's Mountain area - maybe a footbridge over the Tualatin River near the Willamette confluence. Also do fundraising/matching grants with the local residents able to donate by check or Visa to the specific projects to augment what the public in the region and the cities have funded.

Tax incentives or conservation easements are important methods to help partner with private individuals. Pattern the incentives similar to farmland tax incentives.

5. Do you have any other comments about this target area? If so, please specify.

Very important wildlife area.

The prospect of a connected trail here is very exciting.

My name is Dawn Adams. I live at 2310 Century Lane, West Linn, OR. Citizens of the Metro area are to be congratulated on their recent passage of the Natural Areas Bond Measure. And I thank Metro for this Open House, giving us an opportunity to offer suggestions for the use of bond proceeds to acquire and thus preserve important natural areas in our neighborhoods. I am here tonight to advocate for the inclusion of the Savannah Oaks parcel located at the intersection of Blankenship and Tannler Drive in West Linn as part of the proposed purchases using the bond funds. Many devoted citizens have worked diligently to collect signatures, raise money and work with county groups and other interested parties for the purposes of acquiring and preserving this beautiful and rare example of urban woodland. It is estimated that some of the lovely old oak trees in the unique stand are over 500 years old. Our children and grandchildren into the proverbial seventh generation will be grateful for our foresight in protecting this oak grove. I have composed a haiku for us all to consider as we ponder the path our region is traveling. Population grows- Without a thought to limits Fewer birds will fly away.

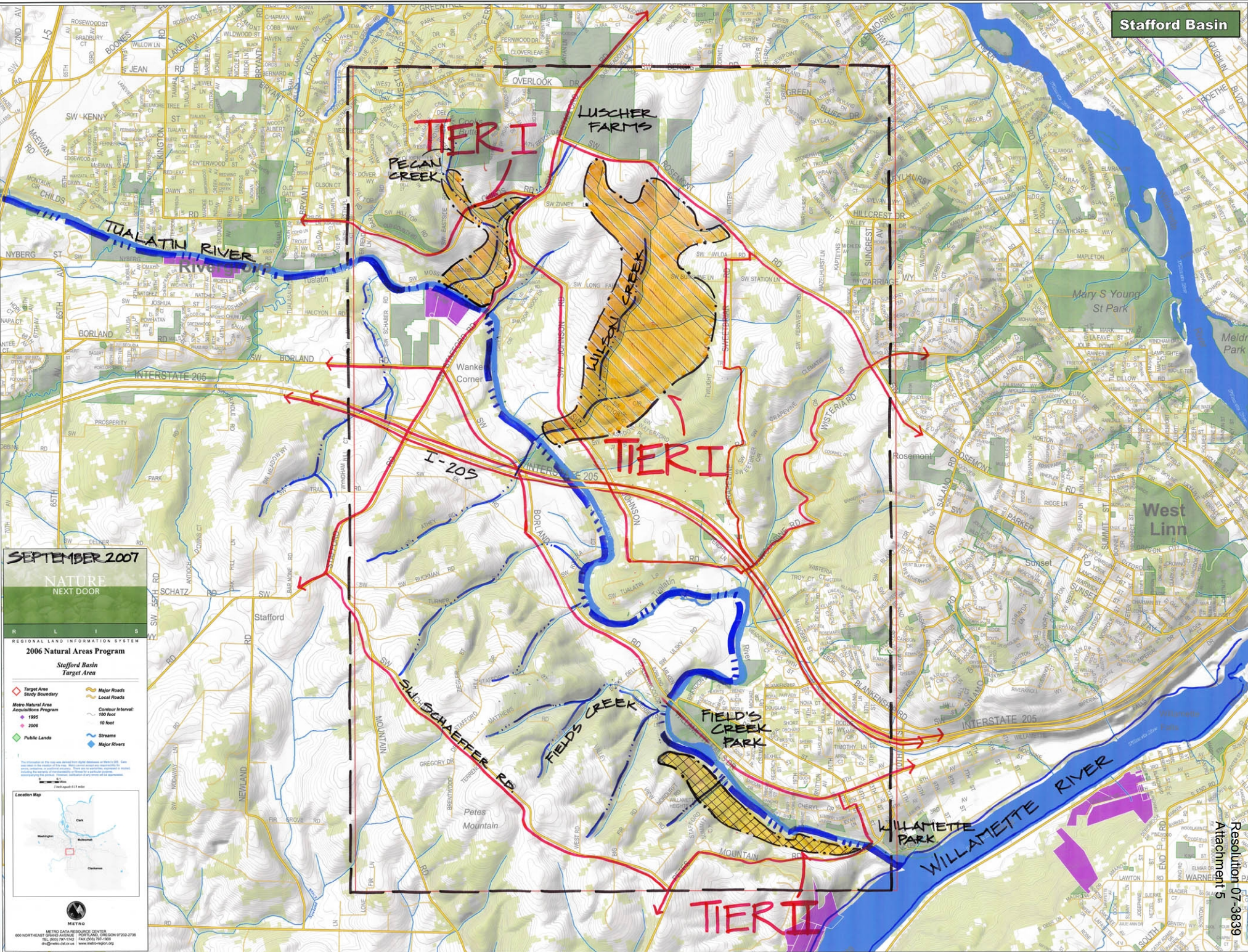
Close to the Stafford Basin and in Wilsonville there is a good piece of land that would be a great buy for Metro. The property has a walking trail open to public to use and there is so much environmental goods there. Wetlands; one old growth pine tree that is about 150 feet tall and can be seen around the trail. The property could be used for greenspace plus add trees and more trails.

SAVE FARMLAND AND WATERWAYS.

Bed and Breakfast and country dining would be desirable.

This area is hard to access for biking and walking trails and yet has some land that could be used for that. Acquisition and access go together to strengthen the support for future money measures.

All the areas need to have upland connection to other stream corridors. This is important for genetic diversity and population dynamics.



SEPTEMBER 2007
NATURE
NEXT DOOR

- REGIONAL LAND INFORMATION SYSTEM
2006 Natural Areas Program
Stafford Basin
Target Area
- Target Area Study Boundary
 - Major Roads
 - Local Roads
 - Metropolitan Area Acquisitions Program
 - Contour Interval: 100 foot
 - 10 foot
 - Streams
 - Major Rivers
 - Public Lands



METRO
METRO DATA RESOURCE CENTER
600 NORTHEAST GRAND AVENUE PORTLAND, OREGON 97232-3796
TEL: 503.797.1142 FAX: 503.797.1500
drc@metro-data.org www.metro-region.org