

BEFORE THE METRO COUNCIL

APPROVING THE NATURAL AREAS ACQUISITION
REFINEMENT PLAN FOR THE TONQUIN
GEOLOGIC AREA TARGET AREA

RESOLUTION NO. 07-3850

Introduced by Chief Operating Officer
Michael J. Jordan, with the
concurrence of Council President
David Bragdon

WHEREAS, on March 9, 2006, the Metro Council adopted Resolution No. 06-3672B “For the Purpose of Submitting to the Voters of the Metro Area a General Obligation Bond Indebtedness in the Amount of \$227.4 Million to Fund Natural Area Acquisition and Water Quality Protection,” recommending submission for voter approval a general obligation bond to preserve and protect natural areas, clean water, and fish and wildlife (the “2006 Natural Areas Bond Measure” or “Measure”); and

WHEREAS, at the election held on November 7, 2006, the voters approved Ballot Measure 26-80, the 2006 Natural Areas Bond Measure; and

WHEREAS, the Tonquin Geologic Area Target Area was identified in the Measure as one of 27 regional target areas for land acquisition, building on the success of land acquisitions in the Tonquin Geologic Area Target Area pursuant to Metro’s 1995 Open Spaces Bond Measure Program; and

WHEREAS, as provided in the 2006 Natural Areas Bond Measure, Metro has undertaken a public refinement process to establish specific acquisition strategies, goals, objectives, and a confidential tax-lot specific acquisition target area map for each of the 27 target areas; and

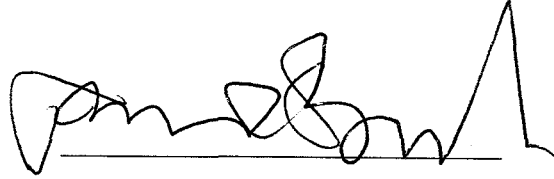
WHEREAS, Metro’s refinement process included the compilation of available information about each target area; biological field visits and expert analysis of maps; interviews with key stakeholders including natural resource experts, property owners, representatives from state and local government agencies, and advocates from water quality, fish, and wildlife preservation interest groups; and eight public open houses at sites throughout the region and a “virtual” open house available via the internet, at which draft refinement plans were made available for public review and participants could share their target area priorities either in-person or electronically; and

WHEREAS, on March 1, 2007, the Council approved Resolution No. 07-3766A, “Authorizing the Chief Operating Officer to Purchase Property with Accepted Acquisition Guidelines as Outlined in the Natural Areas Implementation Work Plan,” authorizing the Metro Chief Operating Officer to acquire properties identified on a Council-approved target area “confidential refinement map;” and

WHEREAS, the Council has reviewed the draft refinement plans and considered information it has received from citizens, scientists, advocates, and state and local governments; now, therefore

BE IT RESOLVED that the Metro Council adopts the Tonquin Geologic Area Refinement Plan attached hereto as Exhibit A, including the confidential tax-lot specific map reviewed by the Council in Executive Session on September 4, 2007, and signed by Council President David Bragdon, and hereby authorizes the Chief Operating Officer to acquire properties in the Tonquin Geologic Area Target Area consistent with the Council-approved Acquisition Parameters and Due Diligence Guidelines of the Natural Areas Implementation Work Plan.

ADOPTED by the Metro Council this 27th day of September 2007.

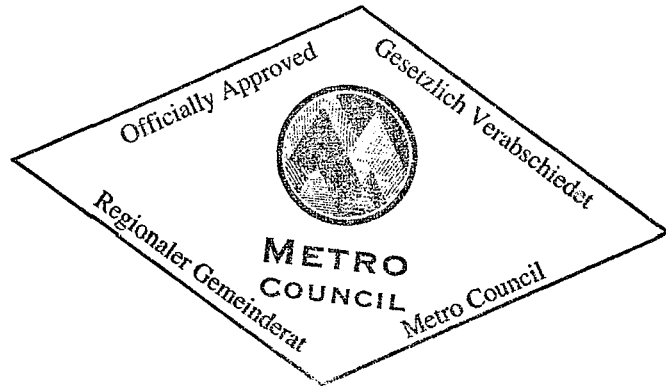


David Bragdon, Council President

Approved as to Form:



Daniel B. Cooper, Metro Attorney



**2006 NATURAL AREAS ACQUISITION PROGRAM
TONQUIN GEOLOGIC AREA TARGET AREA REFINEMENT PLAN**

Background

The 1995 refinement goals focused on preserving the remaining unique natural features (such as kolk ponds) in the Tonquin Geological Area, preserving riparian buffers and wetland areas in the Rock, Coffee Lake and Mill Creek floodplains, creating a Tonquin Greenway connecting the Tualatin River National Wildlife Refuge to the Willamette River, and acquiring the state-owned “Wilsonville Tract” for a future natural area. The acquisition goal for this target area was 277 acres, and 487 acres were purchased.

Substantial progress was made during the first acquisition program by acquiring the 250-acre Wilsonville Tract and 165 acres of floodplain in the Coffee Lake Bottomlands. However, only a few acres of the target area’s unique basalt hummock/kolk pond geologic formations were protected, leaving this goal largely unmet. Also, additional acquisition of key floodplain parcels in the Coffee Lake Bottomlands would substantially improve restoration potential of the lands purchased with the 1995 measure. The first acquisition program established a foundation for the Tonquin Greenway and Tonquin Trail, but many gaps remain.

The 2006 Natural Areas bond measure stated:

Bearing visible marks left by the ancient floods that shaped our region, the area from Wilsonville to Sherwood and Tualatin is unique. Protection of the rocky outcrops that frame these former lake bottoms will provide wildlife habitat of considerable complexity and richness and preserve the area's rare geologic features. Within this area, a 12-mile trail corridor will connect nearby cities and the new town center of Villebois to regionally significant natural areas (e.g., Graham Oaks Natural Area, Tualatin River National Wildlife Refuge, Kolk Ponds, the Cedar Creek Greenway in Sherwood and the Willamette River Greenway). The corridor will also provide an important recreation and commuter connector from Wilsonville north to Tualatin.

Target Area Description

The Tonquin Geologic Area comprises approximately 17 square miles of land in Washington and Clackamas counties. The natural area extends from the communities of Tualatin and Sherwood south to Wilsonville.

This area has a unique landscape with extensive evidence of the Bretz Floods (or Missoula Floods) that scoured the Columbia River Gorge and extended into the Willamette Valley multiple times between approximately 13,000 and 15,000 years ago. Receding floodwaters from these events left behind unique geologic formations such as kolk ponds and channels, basalt hummocks and knolls, which are still present throughout the area today. This landscape contains considerable and diverse plant, fish and wildlife habitat.

Coffee Lake Creek originates in the Tualatin-Sherwood area and flows south through Wilsonville to the Willamette River. The wetland habitat along the creek supports many important species of migratory and residential wildlife and wetland plants.

The Tonquin Trail is a regional trail envisioned to connect the Tualatin River Wildlife Refuge in Sherwood to the Willamette River and the Willamette River Greenway in Wilsonville. A second “Y” in the northern half of the trail would connect the Tonquin Trail up to the city of Tualatin and join up with the Fanno Creek Greenway. A trail bridge has been constructed across the Tualatin River at this location, linking Tualatin to Tigard and Durham and eventually connecting Portland all the way to Wilsonville.

A feasibility study for a trail alignment has been completed by regional and local government partners. Federal transportation funding will provide for the development of a master plan for the Tonquin Trail beginning in 2007.

A section of the trail running through the new “Villebois” neighborhood in Wilsonville will be built by the area’s developers. Other landowners or developers in the area could also follow this example.

Refinement Process

During the refinement process, Metro staff compiled available information about the Tonquin Geologic target area, analyzed maps and conducted biological field visits. In addition, an independent biological assessment was performed for this target area by Vigil Agrimis Design Professional in May 2007. Individuals were interviewed representing various government agencies, property owners, interested friends groups and natural resource experts. The key concerns expressed during the interviews are summarized in Attachment 1.

A public open house to discuss the proposed Refinement Plan was held on June 14, 2007 at the Tualatin Hills Nature Park Interpretive Center, one of eight such open houses held throughout the region. Notices of the open houses were mailed to area residents and other interested citizens. Metro also conducted a “virtual” open house by making target area informational materials, including maps, available “online” via the internet and allowing participants to share their target area priorities electronically. A total of 527 people attended the regional open houses, and the online open house had 6,363 visits from 3,419 unique visitors. More than 700 target surveys were submitted either in person or online. Nine people completed the Tonquin Geologic Area survey. A copy of the survey questionnaire is included as Attachment 2. The map associated with the questionnaire for this target area is included as Attachment 3, and complete survey results are included as Attachment 4.

Findings

Natural Area Findings

- The Tonquin Geologic Area (also known as Scablands) was heavily shaped by the Bretz Floods (also known as Missoula Floods) 8,000-11,000 years ago.
- The Tonquin Scablands were scoured to bedrock in many places by the Bretz floods, leaving behind a geologic landscape unique to this region and found nowhere else in the Lower Willamette Valley.
- The two most characteristic geologic features in the Tonquin Scabland are ponds known as “kolks,” which formed when floodwaters eroded depressions in the bedrock itself, and numerous basal hummocks and knolls, often situated alongside kolk ponds.
- These features support regionally rare plants and wildlife, including Oregon oak, madrone, western pond turtle, and northern red-legged frog.
- Metro has acquired 487 acres to date in the Tonquin Geologic Area, including the 250-acre Graham Oaks Natural Area and the 165-acre Coffee Lake Bottomlands.
- Effective floodplain restoration within the 165-acre Coffee Lake Bottomland is currently impeded by incomplete public ownership.
- Only a few acres of the unique scabland geologic characteristics of the Tonquin Geologic Area exist within the 487 acres acquired.
- Portions of the Tualatin River National Wildlife Refuge are located within the Tonquin Geologic Area, providing opportunities to establish greenway connections and corridors between Metro natural areas and the Refuge.

- Several large development projects have affected the Tonquin Geologic Area in the last 10 years.
- The proposed I-5/99W Connector Project could affect this target area substantially. Among the proposed alignments for this road project are those that pass through proposed Tier 1 acquisition areas.

Trail-Related Findings

- The Tonquin Trail corridor is well defined from Wilsonville at the Willamette River north to the northern boundary of the Coffee Creek Wetlands Area at SW Grahams Ferry Road. From this point, the potential trail splits into three alignments as the trail travels north to connect to Sherwood, King City and Tualatin.
- Significant constraints exist along the proposed trail routes including segments along Tonquin Road and Grahams Ferry Road. Alternatives need to be explored along Basalt Creek and Hedges Creek.
- The proposed I-5/99W connector has several alignments that cut through the target area, which may ultimately effect the trail alignment.
- Multiple trail options are possible with planned infrastructure improvements. This includes the Cipole Trunk Sewer, Wilsonville to Sherwood water line, and the I-5/99W connector project (e.g. trail with bike lanes).
- A Nature Center is planned within the private development east of Villebois that could serve as a trailhead/interpretive center for the trail and community events.
- The opportunity exists to acquire lands that preserve the unique geologic features of the area while also providing a potential corridor for the regional trail.
- Private property developers will implement portions of the regional trail.
- A trail bridge has been built across the Tualatin River at Cook Park, linking Tualatin to Tigard and Durham and the regional Fanno Creek Greenway.
- Though the USFWS owns significant tracts of land within the study area, they currently do not allow multi-use trails on their property.

Survey Results

- Nine people completed the Tonquin Geologic Area survey. Additional commentary was provided verbally at the open house, most of which was consistent with the written responses. In rank order, the public priorities were:
 1. *Map area 1B* – Protect additional portions of the Coffee Lake floodplain area to support effective wetland restoration.
 2. *Map area 1C* – Protect lands along Coffee Lake Creek and Rock Creek linking together public lands and improving connections for wildlife between the Willamette and Tualatin rivers.
 3. *Map area 1A* – Protect the kolk ponds and basalt geologic features west and northwest of the Coffee Lake Creek drainage and north of Graham’s Ferry Road.

Goal

Protect unique geologic features that provide valuable wildlife habitat. Acquire additional lands needed for a future regional trail corridor connecting Wilsonville to Tualatin.

Objectives

A target area map showing the tiered objectives described below is included as Attachment 5.

Tier I Objectives

- Acquire lands within the Coffee Lake Creek and Rock Creek for completing restoration on Coffee Creek and on permanent protection of the unique geologic features.
- Acquire lands within the Coffee Lake Creek and Rock Creek areas for regional trail connections.

Tier II Objectives

- Acquire lands to protect unique geologic features within the Basalt Creek area.
- Acquire land for the trail corridor, particularly along Hedges Creek, Basalt Creek and adjacent to Tonquin Road.

STAFF REPORT

IN CONSIDERATION OF RESOLUTION NO. 07-3850, APPROVING THE NATURAL AREAS ACQUISITION REFINEMENT PLAN FOR THE TONQUIN GEOLOGIC AREA TARGET AREA

Date: September 27, 2007

Prepared by: Jim Desmond
Kathleen Brennan-Hunter

BACKGROUND—REFINEMENT PROCESS

The Natural Areas Bond Measure (Resolution No. 06-3672B, “For the Purpose of Submitting to the Voters of the Metro Area a General Obligation Bond Indebtedness in the Amount of \$227.4 Million to Fund Natural Area Acquisition and Water Quality Protection,” adopted by the Metro Council March 9, 2006) provided that Metro would undertake a “Refinement Process” to “gather additional information about each individual target area and begin zeroing in on particular parcels that would be valuable to acquire” (Exhibit A to Resolution No. 06-3672B). In addition, the Natural Areas Implementation Work Plan (Resolution No. 07-3766A, “Authorizing the Chief Operating Officer to Purchase Property with Accepted Acquisition Guidelines as Outlined in the Natural Areas Implementation Work Plan,” adopted by the Metro Council on March 1, 2007) authorized the Metro Chief Operating Officer to acquire properties without further Council approval if they have been identified on a Council-approved target area “confidential refinement map.” To implement those directives, the Refinement Plans for each target area contain overall target area objectives and confidential tax-lot specific target area maps identifying priority properties for acquisition, enabling Metro staff to begin the acquisition of property and property rights as detailed in the Natural Areas Implementation Work Plan.

Additional background information, target area information, a description of the specifics of the refinement process regarding this target area, and the refinement plan’s findings, goals, and objectives are described in further detail in Exhibit A to this resolution, the Tonquin Geologic Area Target Area Refinement Plan.

ANALYSIS/INFORMATION

1. **Known Opposition**

None.

2. **Legal Antecedents**

Resolution No. 06-3672B, “For the Purpose of Submitting to the Voters of the Metro Area a General Obligation Bond Indebtedness in the Amount of \$227.4 Million to Fund Natural Area Acquisition and Water Quality Protection,” adopted on March 9, 2006.

The voters’ approval of Metro’s 2006 Natural Areas Bond Measure at the general election held on November 7, 2006.

Resolution No. 07-3766A “Authorizing the Chief Operating Officer to Purchase Property With Accepted Acquisition Guidelines as Outlined in the Natural Areas Implementation Work Plan,” adopted by the Metro Council on March 1, 2007, established the Acquisition Parameters and Due Diligence Guidelines for the purchase of properties as part of the 2006 Natural Areas Bond Program.

3. **Anticipated Effects**

Acquisition of natural area properties in the Tonquin Geologic Area target area to achieve the goals and purposes of the 2006 Natural Areas Bond Measure.

4. **Budget Impacts**

The FY 2007-08 budget includes budgetary authority to purchase \$35 million in natural area lands, with an additional \$15.4 million in contingency, if necessary. It is estimated, based on historical spending patterns, that this authority will be sufficient to cover the anticipated acquisition activity for this fiscal year. Additional unappropriated fund balance (\$64 million) exists for land acquisition in future years, along with the authority to issue up to an additional \$102 million in General Obligation bonds in support of this program.

RECOMMENDED ACTION

Staff recommends adoption of Resolution No. 07-3850.

Summary of Comments from Stakeholder Interviews for Tonquin Geologic Area Target Area

Stakeholder(s) Interviewed

Chris Neamtzu, City of Wilsonville
Mel Huie, Metro
Ben Harrison, US Fish & Wildlife Service
George Hudson, Alta Planning + Design
Carl Switzer, City of Tualatin
John Mermin, Metro
Astrid Dragoy, Clean Water Services
Aisha Willits, Washington County
Adam Stellmacher, Metro

Key Themes Discussed

Tonquin Trail Corridor(s)

- A great opportunity to connect up islands of open space/green space with trail from Coffee Creek area to Tualatin National Wildlife Refuge
- Proposed Cipole Trunk Sewer Line (along Hedges Creek) presents a potential trail opportunity to connect into Tualatin from the south.
- Basalt Creek drainage is good trail corridor candidate for connecting north to Tualatin
- The BPA has a powerline corridor that could serve as a trail corridor running from Coffee Creek northeast towards Sherwood.
- Look to expand right-of-way of existing streets for bicycle and pedestrian connections.
- North of Grahams Ferry Road/Ridder Road, it becomes more difficult to identify connections, potential trail corridors heading into Sherwood and Tualatin.
- Tualatin National Wildlife Refuge (TNWR) owns several acres adjacent to Tonquin Road – although TWR currently does not allow paved trails on land.
- Grahams Ferry Road in Wilsonville is collector status (bike lanes w/ sidewalks), this cross-section needs to continue into Tualatin for an on-road alignment.
- Trail use is compatible with preservation of the natural resource features

Natural Resources / Water Quality / Wildlife Habitat

- Significant upland resource area exists along Coffee Creek.
- Several kolk ponds in target area are regionally unique and a significant natural resource
- Clean Water Services (CWS) advocates a wide buffer area along the Tualatin River – 125 feet from the top of bank. Trail development is not prohibited. Can build within outer 40% of buffer, or within 50 feet of top of bank with justification. Smaller creeks have a 50-foot buffer (can be within 35 feet) for 10-foot wide trails, 12 feet wide with low impact development of trail. Building within CWS buffers requires mitigation.
- Wetlands Conservancy starting conservation effort on city owned land in Tualatin this summer.
- Cipole Trunk Line provides opportunity for invasive vegetation removal along Hedges Creek.

- Several rock pit sites are within the target area. Recommend reviewing the life of their permits to determine potential long-term use of these sites. One pond area is currently being filled.
- Additional land is desired along Sealy Creek.

Existing and Proposed Projects Impacting Target Area

- There is a proposed bridge over the Willamette River in Wilsonville at the former ferry crossing - the French Prairie Bridge. Could serve dual use for emergency services access.
- Villebois is building portions of the trail. An “Environmental Building” is proposed as part of the eastern development area. Site has views over Coffee Creek.
- Highway 99/I-5 Connector with multiple options remains open for discussion, will most likely impact target area. The connector could serve as a potential trail corridor.
- Significant public process has been conducted in Wilsonville through numerous projects – Bicycle/Pedestrian/Trail Master Plan, Parks Master Plan, and Transportation System Plan.
- Wilsonville Trail Plan includes a water trail component.
- Boeckman Creek Trail will provide a spur connection to the regional Stafford Trail.
- Trails are planned within the Graham Oaks Natural Area.
- USFWS Visitor’s Center is planned to open this summer in the Tualatin National Wildlife Refuge. Public access into the refuge is by foot only (no bikes allowed).
- The City of Tualatin would like to acquire lands along the south bank of the Tualatin River to complete the Tualatin River Greenway Trail.
- A major water transmission line is planned to run between Wilsonville (Water Treatment Plant) and Sherwood.
- Several Measure 37 Claims in front of Washington County are in the target area.
- Connect into the existing bicycle/pedestrian bridge that crosses Tualatin River and connects Durham Park with Cook Park and continues as Fanno Creek Trail.
- Tualatin Bikeway Plan needs to integrate with Tonquin Trail.
- Tualatin needs a bikeway (1991) and parks (1983) master plan update.

QUESTIONNAIRE

TARGET AREA: TONQUIN GEOLOGIC AREA

In November 2006 voters directed the Metro Council to extend a regionwide program and acquire between 3,500 and 4,500 acres of additional natural areas to protect water quality and fish and wildlife habitat and to provide future generations opportunities for greater access to nature. Now it's time for the Metro Council to refine priorities in the 27 regional natural areas and trail corridors targeted for acquisition. The 1995 acreage goal for this target area was 277 and Metro has acquired 487 acres to date. The 2006 program will provide additional funding for protection goals in this target area.

The Metro Council wants your ideas and input. We've been talking with scientists, land-use experts, groups and individuals who have special knowledge about the natural resource values and community visions for these areas. With this information Metro has begun to identify the potential strategies and opportunities that will achieve the best results. Now we need to know: Do we have it right? What have we missed? What is most important to you?

2006 NATURAL AREAS BOND DESCRIPTION FOR THIS TARGET AREA

Bearing visible marks left by the ancient floods that shaped our region, the area from Wilsonville to Sherwood and Tualatin is unique. Protection of the rocky outcrops that frame these former lake bottoms will provide wildlife habitat of considerable complexity and richness and preserve the area's rare geologic features. Within this area, a 12-mile trail corridor will connect nearby cities and the new town center of Villebois to regionally significant natural areas (e.g., Graham Oaks Natural Area, Tualatin River National Wildlife Refuge, Kolk Ponds, the Cedar Creek Greenway in Sherwood and the Willamette River Greenway). The corridor will also provide an important recreation and commuter connector from Wilsonville north to Tualatin.

QUESTIONS

- The following priorities were identified in the Tonquin Geologic target area based on scientific information about benefits to water quality, habitat diversity, wildlife connectivity and/or restoration potential and from information provided by key stakeholders in the area. Rank in order of importance to you from 1 to 3, with 1 being the most important and 3 being the least important.**
 - _____ Protecting the kolk ponds and basalt geologic features west and northwest of the Coffee Lake Creek drainage and north of Graham's Ferry Road. **(Map area 1A)**
 - _____ Protecting additional portions of the Coffee Lake floodplain area to support effective wetland restoration. **(Map area 1B)**
 - _____ Protecting lands along Coffee Lake Creek and Rock Creek linking together public lands and improving connections for wildlife between the Willamette and Tualatin rivers. **(Map area 1C)**

2. A regional trail has been planned that would connect the Tualatin River to the Willamette River following various trail alignments in the Tonquin Geologic target area. Rank these trail priorities in order of importance to you from 1 to 4, with 1 being the most important and 4 being the least important.

- _____ Protecting a potential trail corridor along Basalt Creek in unincorporated Washington County. **(Map area 2A)**
- _____ Acquiring a trail easement along Hedges Creek connecting to the City of Tualatin. **(Map area 2B)**
- _____ Acquiring lands along Tonquin Road to connect the trail north to the Tualatin River National Wildlife Refuge and the Tualatin River. **(Map area 2C)**
- _____ Acquiring a trail easement underneath existing power lines. **(Map area 2D)**

3. Are there other priorities that the Metro Council should consider in the Tonquin Geologic target area? Please be specific.

4. Do you have suggestions about partnerships Metro should pursue or other innovative ways to leverage regional funding and enhance this natural area?

5. Are you interested in participating in Metro’s Natural Areas program by selling or donating your property or selling or donating a trail or conservation easement on your property?

Yes No If yes, please be sure to provide your contact information below.

6. Do you have any other comments about this target area?

Please add my name to the Tonquin Geologic target area mailing list for future information, public meetings and events.

Name _____

Address _____

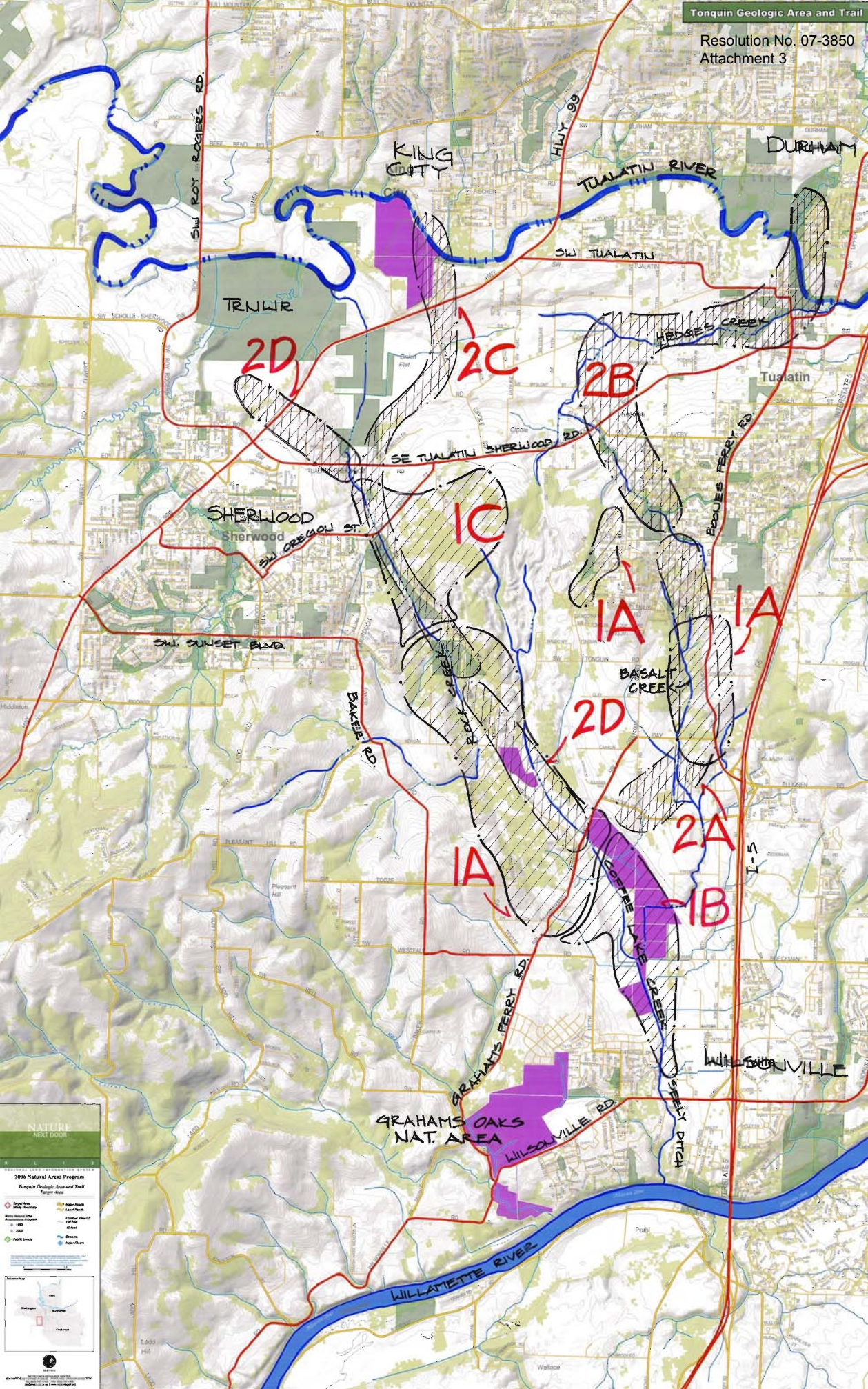
City/State/Zip _____

Phone _____

E-mail _____

**You may complete this questionnaire online at
www.metro-region.org/naturalareas**

or mail it to Metro at
600 NE Grand Avenue, Portland, OR 97232
(503) 797-1741



NATURE
NEXT DOOR

2006 Natural Areas Program
Tongue Geologic Area and Trail
Target Area

| | |
|--|---|
| <ul style="list-style-type: none"> Boundary Public Land Water Public Lands | <ul style="list-style-type: none"> Major Road Local Road County Road Trail Stream Water |
|--|---|

Map of Oregon showing the location of the Tongue Geologic Area and Trail in the northwestern part of the state.

Tonquin Geologic Area Survey Results

1. The following priorities were identified in the Tonquin Geologic target area based on scientific information about benefits to water quality, habitat diversity, wildlife connectivity and/or restoration potential and from information provided by key stakeholders in the area. Rank in order of importance to you.

| | most important | | | least important | Rating Average | Response Count |
|--|--------------------------|-----------|-----------|-----------------|----------------|----------------|
| Protecting a potential trail corridor along Basalt Creek in unincorporated Washington County. (Map area 2A) | 37.5% (3) | 12.5% (1) | 37.5% (3) | 12.5% (1) | 2.25 | 8 |
| Acquiring a trail easement along Hedges Creek connecting to the City of Tualatin. (Map area 2B) | 0.0% (0) | 50.0% (4) | 37.5% (3) | 12.5% (1) | 2.63 | 8 |
| Acquiring lands along Tonquin Road to connect the trail north to the Tualatin River National Wildlife Refuge and the Tualatin River. (Map area 2C) | 37.5% (3) | 37.5% (3) | 25.0% (2) | 0.0% (0) | 1.88 | 8 |
| Acquiring a trail easement underneath existing power lines. (Map area 2D) | 25.0% (2) | 0.0% (0) | 0.0% (0) | 75.0% (6) | 3.25 | 8 |
| | <i>answered question</i> | | | | | 8 |
| | <i>skipped question</i> | | | | | 2 |

2. A regional trail has been planned that would connect the Tualatin River to the Willamette River following various trial alignments in the Tonquin Geologic target area. Rank these trail priorities in order of importance to you.

| | most important | | least important | Rating Average | Response Count |
|--|--------------------------|-----------|-----------------|----------------|----------------|
| Protecting the kolk ponds and basalt geologic features west and northwest of the Coffee Lake Creek drainage and north of Graham's Ferry Road. (Map area 1A) | 33.3% (3) | 22.2% (2) | 44.4% (4) | 2.11 | 9 |
| Protecting additional portions of the Coffee Lake floodplain area to support effective wetland restoration. (Map area 1B) | 44.4% (4) | 33.3% (3) | 22.2% (2) | 1.78 | 9 |
| Protecting lands along Coffee Lake Creek and Rock Creek linking together public lands and improving connections for wildlife between the Willamette and Tualatin rivers. (Map area 1C) | 22.2% (2) | 44.4% (4) | 33.3% (3) | 2.11 | 9 |
| | <i>answered question</i> | | | | 9 |
| | <i>skipped question</i> | | | | 1 |

3. Are there other priorities that the Metro Council should consider in this target area? If so, please specify.

Question 1 - item ranked #4 (acquiring a trail easement along Hedges Creek...) "CITY SHOULD DO THIS" Wildlife crossings/protections at Grahams Ferry Rd./Coffee Creek crossing.

Work new acquisitions to tie into acquisitions and emphasize large scale wetland restoration.

FEWER TRAILS!! Please acquire more lands, especially wetlands and uplands for turtles and red legged frogs.

4. Do you have suggestions about partnerships Metro should pursue or other innovative ways to leverage regional funding and enhance this natural area? If so, please specify.

Cities of Wilsonville/Tualatin and Sherwood - ODOT and WaCoDT re: transportation corridors and new road locations, Tualatin River National Wildlife Refuge, Raindrops to Refuge, OWEB &DU & NFWF re: wetlands restoration.

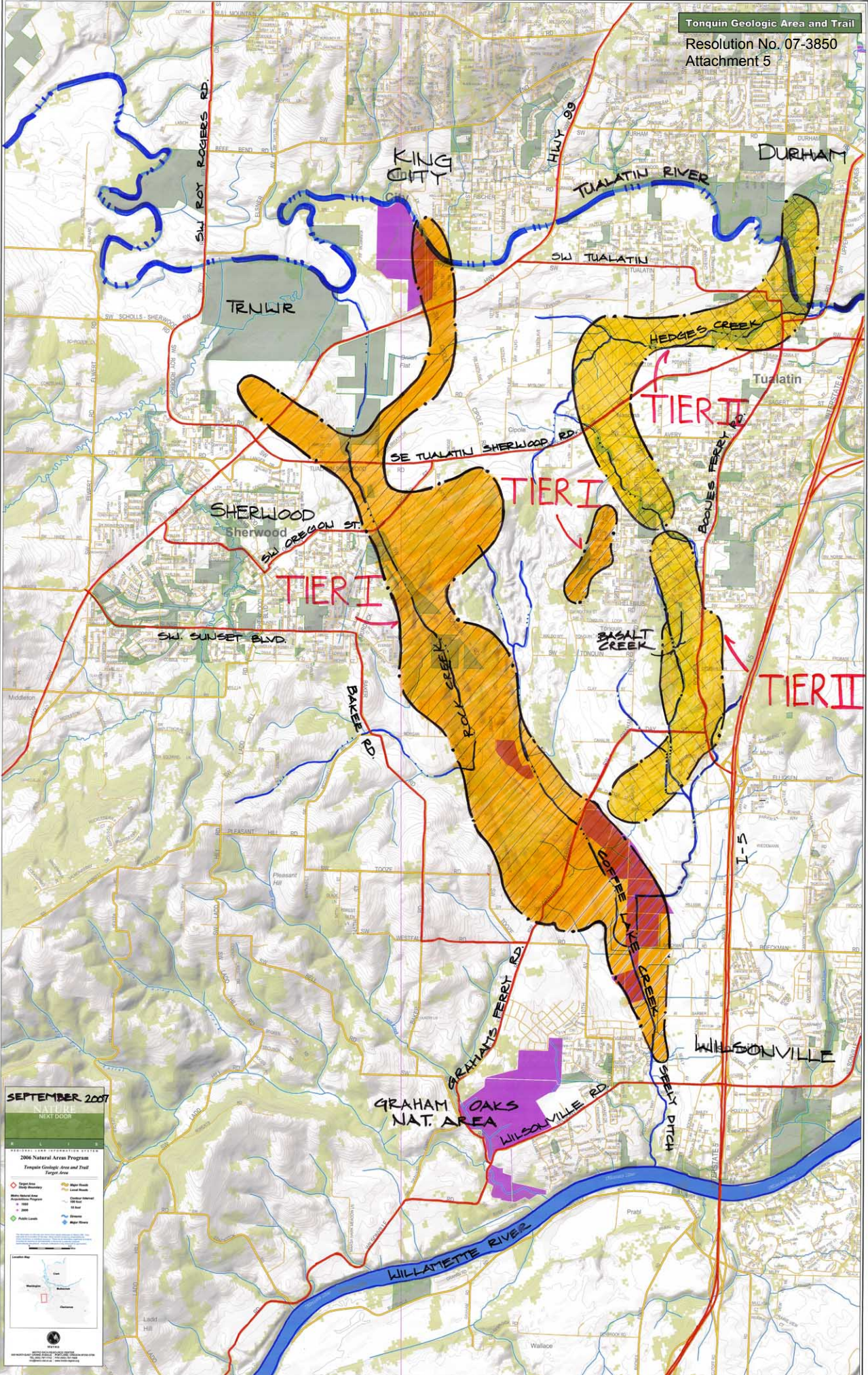
5. Do you have any other comments about this target area? If so, please specify.

Tie the natural areas acquisitions into the trails planning to resume access with local communities and local trails connecting to regional trails.

Restore this great wetland area!

Please keep trails out of sensitive wildlife habitats. Thanks!

I don't know enough to prioritize. Please protect as much as you can. I would prefer less paved trails - more mountain bike and hiking trails.



SEPTEMBER 2007
NEXT DRAFT

2006 Natural Area Program
Tonquin Geologic Area and Trail
Target Area

- City Limits
- County Boundary
- Major Road
- Water
- Public Lands
- Algebra
- Local Road
- Contour Interval
- 100 feet
- 2000
- 50 feet
- Algebra
- Algebra

Scale: 1 inch = 1 mile

North Arrow

Map of Oregon showing the location of the Tonquin Geologic Area and Trail.

**2006 NATURAL AREAS ACQUISITION PROGRAM
TONQUIN GEOLOGIC AREA TARGET AREA REFINEMENT PLAN**

Background

The 1995 refinement goals focused on preserving the remaining unique natural features (such as kolk ponds) in the Tonquin Geological Area, preserving riparian buffers and wetland areas in the Rock, Coffee Lake and Mill Creek floodplains, creating a Tonquin Greenway connecting the Tualatin River National Wildlife Refuge to the Willamette River, and acquiring the state-owned "Wilsonville Tract" for a future natural area. The acquisition goal for this target area was 277 acres, and 487 acres were purchased.

Substantial progress was made during the first acquisition program by acquiring the 250-acre Wilsonville Tract and 165 acres of floodplain in the Coffee Lake Bottomlands. However, only a few acres of the target area's unique basalt hummock/kolk pond geologic formations were protected, leaving this goal largely unmet. Also, additional acquisition of key floodplain parcels in the Coffee Lake Bottomlands would substantially improve restoration potential of the lands purchased with the 1995 measure. The first acquisition program established a foundation for the Tonquin Greenway and Tonquin Trail, but many gaps remain.

The 2006 Natural Areas bond measure stated:

Bearing visible marks left by the ancient floods that shaped our region, the area from Wilsonville to Sherwood and Tualatin is unique. Protection of the rocky outcrops that frame these former lake bottoms will provide wildlife habitat of considerable complexity and richness and preserve the area's rare geologic features. Within this area, a 12-mile trail corridor will connect nearby cities and the new town center of Villebois to regionally significant natural areas (e.g., Graham Oaks Natural Area, Tualatin River National Wildlife Refuge, Kolk Ponds, the Cedar Creek Greenway in Sherwood and the Willamette River Greenway). The corridor will also provide an important recreation and commuter connector from Wilsonville north to Tualatin.

Target Area Description

The Tonquin Geologic Area comprises approximately 17 square miles of land in Washington and Clackamas counties. The natural area extends from the communities of Tualatin and Sherwood south to Wilsonville.

This area has a unique landscape with extensive evidence of the Bretz Floods (or Missoula Floods) that scoured the Columbia River Gorge and extended into the Willamette Valley multiple times between approximately 13,000 and 15,000 years ago. Receding floodwaters from these events left behind unique geologic formations such as kolk ponds and channels, basalt hummocks and knolls, which are still present throughout the area today. This landscape contains considerable and diverse plant, fish and wildlife habitat.

Coffee Lake Creek originates in the Tualatin-Sherwood area and flows south through Wilsonville to the Willamette River. The wetland habitat along the creek supports many important species of migratory and residential wildlife and wetland plants.

The Tonquin Trail is a regional trail envisioned to connect the Tualatin River Wildlife Refuge in Sherwood to the Willamette River and the Willamette River Greenway in Wilsonville. A second "Y" in the northern half of the trail would connect the Tonquin Trail up to the city of Tualatin and join up with the Fanno Creek Greenway. A trail bridge has been constructed across the Tualatin River at this location, linking Tualatin to Tigard and Durham and eventually connecting Portland all the way to Wilsonville.

EXHIBIT A TO RESOLUTION NO. 07-3850

A feasibility study for a trail alignment has been completed by regional and local government partners. Federal transportation funding will provide for the development of a master plan for the Tonquin Trail beginning in 2007.

A section of the trail running through the new "Villebois" neighborhood in Wilsonville will be built by the area's developers. Other landowners or developers in the area could also follow this example.

Refinement Process

During the refinement process, Metro staff compiled available information about the Tonquin Geologic target area, analyzed maps and conducted biological field visits. In addition, an independent biological assessment was performed for this target area by Vigil Agrimis Design Professional in May 2007. Individuals were interviewed representing various government agencies, property owners, interested friends groups and natural resource experts. The key concerns expressed during the interviews are summarized in Attachment 1.

A public open house to discuss the proposed Refinement Plan was held on June 14, 2007 at the Tualatin Hills Nature Park Interpretive Center, one of eight such open houses held throughout the region. Notices of the open houses were mailed to area residents and other interested citizens. Metro also conducted a "virtual" open house by making target area informational materials, including maps, available "online" via the internet and allowing participants to share their target area priorities electronically. A total of 527 people attended the regional open houses, and the online open house had 6,363 visits from 3,419 unique visitors. More than 700 target surveys were submitted either in person or online. Nine people completed the Tonquin Geologic Area survey. A copy of the survey questionnaire is included as Attachment 2. The map associated with the questionnaire for this target area is included as Attachment 3, and complete survey results are included as Attachment 4.

Findings

Natural Area Findings

- The Tonquin Geologic Area (also known as Scablands) was heavily shaped by the Bretz Floods (also known as Missoula Floods) 13,000-15,000 years ago.
- The Tonquin Scablands were scoured to bedrock in many places by the Bretz floods, leaving behind a geologic landscape unique to this region and found nowhere else in the Lower Willamette Valley.
- The two most characteristic geologic features in the Tonquin Scabland are ponds known as "kolks," which formed when floodwaters eroded depressions in the bedrock itself, and numerous basal hummocks and knolls, often situated alongside kolk ponds.
- These features support regionally rare plants and wildlife, including Oregon oak, madrone, western pond turtle, and northern red-legged frog.
- Metro has acquired 487 acres to date in the Tonquin Geologic Area, including the 250-acre *Graham Oaks Natural Area* and the 165-acre *Coffee Lake Bottomlands*.
- Effective floodplain restoration within the 165-acre Coffee Lake Bottomland is currently impeded by incomplete public ownership.
- Only a few acres of the unique scabland geologic characteristics of the Tonquin Geologic Area exist within the 487 acres acquired.
- Portions of the Tualatin River National Wildlife Refuge are located within the Tonquin Geologic Area, providing opportunities to establish greenway connections and corridors between Metro natural areas and the Refuge.

EXHIBIT A TO RESOLUTION NO. 07-3850

- Several large development projects have affected the Tonquin Geologic Area in the last 10 years.
- The proposed I-5/99W Connector Project could affect this target area substantially. Among the proposed alignments for this road project are those that pass through proposed Tier 1 acquisition areas.

Trail-Related Findings

- The Tonquin Trail corridor is well defined from Wilsonville at the Willamette River north to the northern boundary of the Coffee Creek Wetlands Area at SW Grahams Ferry Road. From this point, the potential trail splits into three alignments as the trail travels north to connect to Sherwood, King City and Tualatin.
- Significant constraints exist along the proposed trail routes including segments along Tonquin Road and Grahams Ferry Road. Alternatives need to be explored along Basalt Creek and Hedges Creek.
- The proposed I-5/99W connector has several alignments that cut through the target area, which may ultimately effect the trail alignment.
- Multiple trail options are possible with planned infrastructure improvements. This includes the Cipole Trunk Sewer, Wilsonville to Sherwood water line, and the I-5/99W connector project (e.g. trail with bike lanes).
- A Nature Center is planned within the private development east of Villebois that could serve as a trailhead/interpretive center for the trail and community events.
- The opportunity exists to acquire lands that preserve the unique geologic features of the area while also providing a potential corridor for the regional trail.
- Private property developers will implement portions of the regional trail.
- A trail bridge has been built across the Tualatin River at Cook Park, linking Tualatin to Tigard and Durham and the regional Fanno Creek Greenway.
- Though the USFWS owns significant tracts of land within the study area, they currently do not allow multi-use trails on their property.

Survey Results

- Nine people completed the Tonquin Geologic Area survey. Additional commentary was provided verbally at the open house, most of which was consistent with the written responses. In rank order, the public priorities were:
 1. *Map area 1B* – Protect additional portions of the Coffee Lake floodplain area to support effective wetland restoration.
 2. *Map area 1C* – Protect lands along Coffee Lake Creek and Rock Creek linking together public lands and improving connections for wildlife between the Willamette and Tualatin rivers.
 3. *Map area 1A* – Protect the kolk ponds and basalt geologic features west and northwest of the Coffee Lake Creek drainage and north of Graham's Ferry Road.

Goal

Protect unique geologic features that provide valuable wildlife habitat. Acquire additional lands needed for a future regional trail corridor connecting Wilsonville to Tualatin.

Objectives

A target area map showing the tiered objectives described below is included as Attachment 5.

Tier I Objectives

- Acquire lands within the Coffee Lake Creek and Rock Creek for completing restoration on Coffee Creek and on permanent protection of the unique geologic features.
- Acquire lands within the Coffee Lake Creek and Rock Creek areas for regional trail connections.

Tier II Objectives

- Acquire lands to protect unique geologic features within the Basalt Creek area.
- Acquire land for the trail corridor, particularly along Hedges Creek, Basalt Creek and adjacent to Tonquin Road.

STAFF REPORT

IN CONSIDERATION OF RESOLUTION NO. 07-3850, APPROVING THE NATURAL AREAS ACQUISITION REFINEMENT PLAN FOR THE TONQUIN GEOLOGIC AREA TARGET AREA

Date: September 27, 2007

Prepared by: Jim Desmond
Kathleen Brennan-Hunter

BACKGROUND—REFINEMENT PROCESS

The Natural Areas Bond Measure (Resolution No. 06-3672B, "For the Purpose of Submitting to the Voters of the Metro Area a General Obligation Bond Indebtedness in the Amount of \$227.4 Million to Fund Natural Area Acquisition and Water Quality Protection," adopted by the Metro Council March 9, 2006) provided that Metro would undertake a "Refinement Process" to "gather additional information about each individual target area and begin zeroing in on particular parcels that would be valuable to acquire" (Exhibit A to Resolution No. 06-3672B). In addition, the Natural Areas Implementation Work Plan (Resolution No. 07-3766A, "Authorizing the Chief Operating Officer to Purchase Property with Accepted Acquisition Guidelines as Outlined in the Natural Areas Implementation Work Plan," adopted by the Metro Council on March 1, 2007) authorized the Metro Chief Operating Officer to acquire properties without further Council approval if they have been identified on a Council-approved target area "confidential refinement map." To implement those directives, the Refinement Plans for each target area contain overall target area objectives and confidential tax-lot specific target area maps identifying priority properties for acquisition, enabling Metro staff to begin the acquisition of property and property rights as detailed in the Natural Areas Implementation Work Plan.

Additional background information, target area information, a description of the specifics of the refinement process regarding this target area, and the refinement plan's findings, goals, and objectives are described in further detail in Exhibit A to this resolution, the Tonquin Geologic Area Target Area Refinement Plan.

ANALYSIS/INFORMATION

1. **Known Opposition**

None.

2. **Legal Antecedents**

Resolution No. 06-3672B, "For the Purpose of Submitting to the Voters of the Metro Area a General Obligation Bond Indebtedness in the Amount of \$227.4 Million to Fund Natural Area Acquisition and Water Quality Protection," adopted on March 9, 2006.

The voters' approval of Metro's 2006 Natural Areas Bond Measure at the general election held on November 7, 2006.

Resolution No. 07-3766A "Authorizing the Chief Operating Officer to Purchase Property With Accepted Acquisition Guidelines as Outlined in the Natural Areas Implementation Work Plan," adopted by the Metro Council on March 1, 2007, established the Acquisition Parameters and Due Diligence Guidelines for the purchase of properties as part of the 2006 Natural Areas Bond Program.

3. **Anticipated Effects**

Acquisition of natural area properties in the Tonquin Geologic Area target area to achieve the goals and purposes of the 2006 Natural Areas Bond Measure.

4. **Budget Impacts**

The FY 2007-08 budget includes budgetary authority to purchase \$35 million in natural area lands, with an additional \$15.4 million in contingency, if necessary. It is estimated, based on historical spending patterns, that this authority will be sufficient to cover the anticipated acquisition activity for this fiscal year. Additional unappropriated fund balance (\$64 million) exists for land acquisition in future years, along with the authority to issue up to an additional \$102 million in General Obligation bonds in support of this program.

RECOMMENDED ACTION

Staff recommends adoption of Resolution No. 07-3850.

Summary of Comments from Stakeholder Interviews for Tonquin Geologic Area Target Area

Stakeholder(s) Interviewed

Chris Neamtzu, City of Wilsonville
Mel Huie, Metro
Ben Harrison, US Fish & Wildlife Service
George Hudson, Alta Planning + Design
Carl Switzer, City of Tualatin
John Mermin, Metro
Astrid Dragoy, Clean Water Services
Aisha Willits, Washington County
Adam Stellmacher, Metro

Key Themes Discussed

Tonquin Trail Corridor(s)

- A great opportunity to connect up islands of open space/green space with trail from Coffee Creek area to Tualatin National Wildlife Refuge
- Proposed Cipole Trunk Sewer Line (along Hedges Creek) presents a potential trail opportunity to connect into Tualatin from the south.
- Basalt Creek drainage is good trail corridor candidate for connecting north to Tualatin
- The BPA has a powerline corridor that could serve as a trail corridor running from Coffee Creek northeast towards Sherwood.
- Look to expand right-of-way of existing streets for bicycle and pedestrian connections.
- North of Grahams Ferry Road/Ridder Road, it becomes more difficult to identify connections, potential trail corridors heading into Sherwood and Tualatin.
- Tualatin National Wildlife Refuge (TNWR) owns several acres adjacent to Tonquin Road – although TWR currently does not allow paved trails on land.
- Grahams Ferry Road in Wilsonville is collector status (bike lanes w/ sidewalks), this cross-section needs to continue into Tualatin for an on-road alignment.
- Trail use is compatible with preservation of the natural resource features

Natural Resources / Water Quality / Wildlife Habitat

- Significant upland resource area exists along Coffee Creek.
- Several kolk ponds in target area are regionally unique and a significant natural resource
- Clean Water Services (CWS) advocates a wide buffer area along the Tualatin River – 125 feet from the top of bank. Trail development is not prohibited. Can build within outer 40% of buffer, or within 50 feet of top of bank with justification. Smaller creeks have a 50-foot buffer (can be within 35 feet) for 10-foot wide trails, 12 feet wide with low impact development of trail. Building within CWS buffers requires mitigation.
- Wetlands Conservancy starting conservation effort on city owned land in Tualatin this summer.
- Cipole Trunk Line provides opportunity for invasive vegetation removal along Hedges Creek.

- Several rock pit sites are within the target area. Recommend reviewing the life of their permits to determine potential long-term use of these sites. One pond area is currently being filled.
- Additional land is desired along Sealy Creek.

Existing and Proposed Projects Impacting Target Area

- There is a proposed bridge over the Willamette River in Wilsonville at the former ferry crossing - the French Prairie Bridge. Could serve dual use for emergency services access.
- Villebois is building portions of the trail. An “Environmental Building” is proposed as part of the eastern development area. Site has views over Coffee Creek.
- Highway 99/I-5 Connector with multiple options remains open for discussion, will most likely impact target area. The connector could serve as a potential trail corridor.
- Significant public process has been conducted in Wilsonville through numerous projects – Bicycle/Pedestrian/Trail Master Plan, Parks Master Plan, and Transportation System Plan.
- Wilsonville Trail Plan includes a water trail component.
- Boeckman Creek Trail will provide a spur connection to the regional Stafford Trail.
- Trails are planned within the Graham Oaks Natural Area.
- USFWS Visitor’s Center is planned to open this summer in the Tualatin National Wildlife Refuge. Public access into the refuge is by foot only (no bikes allowed).
- The City of Tualatin would like to acquire lands along the south bank of the Tualatin River to complete the Tualatin River Greenway Trail.
- A major water transmission line is planned to run between Wilsonville (Water Treatment Plant) and Sherwood.
- Several Measure 37 Claims in front of Washington County are in the target area.
- Connect into the existing bicycle/pedestrian bridge that crosses Tualatin River and connects Durham Park with Cook Park and continues as Fanno Creek Trail.
- Tualatin Bikeway Plan needs to integrate with Tonquin Trail.
- Tualatin needs a bikeway (1991) and parks (1983) master plan update.

QUESTIONNAIRE

TARGET AREA: TONQUIN GEOLOGIC AREA

In November 2006 voters directed the Metro Council to extend a regionwide program and acquire between 3,500 and 4,500 acres of additional natural areas to protect water quality and fish and wildlife habitat and to provide future generations opportunities for greater access to nature. Now it's time for the Metro Council to refine priorities in the 27 regional natural areas and trail corridors targeted for acquisition. The 1995 acreage goal for this target area was 277 and Metro has acquired 487 acres to date. The 2006 program will provide additional funding for protection goals in this target area.

The Metro Council wants your ideas and input. We've been talking with scientists, land-use experts, groups and individuals who have special knowledge about the natural resource values and community visions for these areas. With this information Metro has begun to identify the potential strategies and opportunities that will achieve the best results. Now we need to know: Do we have it right? What have we missed? What is most important to you?

2006 NATURAL AREAS BOND DESCRIPTION FOR THIS TARGET AREA

Bearing visible marks left by the ancient floods that shaped our region, the area from Wilsonville to Sherwood and Tualatin is unique. Protection of the rocky outcrops that frame these former lake bottoms will provide wildlife habitat of considerable complexity and richness and preserve the area's rare geologic features. Within this area, a 12-mile trail corridor will connect nearby cities and the new town center of Villebois to regionally significant natural areas (e.g., Graham Oaks Natural Area, Tualatin River National Wildlife Refuge, Kolk Ponds, the Cedar Creek Greenway in Sherwood and the Willamette River Greenway). The corridor will also provide an important recreation and commuter connector from Wilsonville north to Tualatin.

QUESTIONS

- 1. The following priorities were identified in the Tonquin Geologic target area based on scientific information about benefits to water quality, habitat diversity, wildlife connectivity and/or restoration potential and from information provided by key stakeholders in the area. Rank in order of importance to you from 1 to 3, with 1 being the most important and 3 being the least important.**

_____ Protecting the kolk ponds and basalt geologic features west and northwest of the Coffee Lake Creek drainage and north of Graham's Ferry Road. **(Map area 1A)**

_____ Protecting additional portions of the Coffee Lake floodplain area to support effective wetland restoration. **(Map area 1B)**

_____ Protecting lands along Coffee Lake Creek and Rock Creek linking together public lands and improving connections for wildlife between the Willamette and Tualatin rivers. **(Map area 1C)**

2. **A regional trail has been planned that would connect the Tualatin River to the Willamette River following various trail alignments in the Tonquin Geologic target area. Rank these trail priorities in order of importance to you from 1 to 4, with 1 being the most important and 4 being the least important.**

_____ Protecting a potential trail corridor along Basalt Creek in unincorporated Washington County. **(Map area 2A)**

_____ Acquiring a trail easement along Hedges Creek connecting to the City of Tualatin. **(Map area 2B)**

_____ Acquiring lands along Tonquin Road to connect the trail north to the Tualatin River National Wildlife Refuge and the Tualatin River. **(Map area 2C)**

_____ Acquiring a trail easement underneath existing power lines. **(Map area 2D)**

3. **Are there other priorities that the Metro Council should consider in the Tonquin Geologic target area? Please be specific.**

4. **Do you have suggestions about partnerships Metro should pursue or other innovative ways to leverage regional funding and enhance this natural area?**

5. **Are you interested in participating in Metro's Natural Areas program by selling or donating your property or selling or donating a trail or conservation easement on your property?**

Yes No If yes, please be sure to provide your contact information below.

6. **Do you have any other comments about this target area?**

- Please add my name to the Tonquin Geologic target area mailing list for future information, public meetings and events.**

Name _____

Address _____

City/State/Zip _____

Phone _____

E-mail _____

**You may complete this questionnaire online at
www.metro-region.org/naturalareas**

or mail it to Metro at
600 NE Grand Avenue, Portland, OR 97232
(503) 797-1741



2004 National Areas Program
Geologic Geologic Area
Trail

| | |
|---|---------------|
| ○ | Trail |
| ○ | Geologic Area |
| ○ | Other |
| ○ | Water |
| ○ | Other |

Scale: 1:50,000

Tonquin Geologic Area Survey Results

1. The following priorities were identified in the Tonquin Geologic target area based on scientific information about benefits to water quality, habitat diversity, wildlife connectivity and/or restoration potential and from information provided by key stakeholders in the area. Rank in order of importance to you.

| | most important | | least important | | Rating Average | Response Count |
|--|----------------|-----------|-----------------|-----------|--------------------------|----------------|
| Protecting a potential trail corridor along Basalt Creek in unincorporated Washington County. (Map area 2A) | 37.5% (3) | 12.5% (1) | 37.5% (3) | 12.5% (1) | 2.25 | 8 |
| Acquiring a trail easement along Hedges Creek connecting to the City of Tualatin. (Map area 2B) | 0.0% (0) | 50.0% (4) | 37.5% (3) | 12.5% (1) | 2.63 | 8 |
| Acquiring lands along Tonquin Road to connect the trail north to the Tualatin River National Wildlife Refuge and the Tualatin River. (Map area 2C) | 37.5% (3) | 37.5% (3) | 25.0% (2) | 0.0% (0) | 1.88 | 8 |
| Acquiring a trail easement underneath existing power lines. (Map area 2D) | 25.0% (2) | 0.0% (0) | 0.0% (0) | 75.0% (6) | 3.25 | 8 |
| | | | | | <i>answered question</i> | 8 |
| | | | | | <i>skipped question</i> | 2 |

2. A regional trail has been planned that would connect the Tualatin River to the Willamette River following various trail alignments in the Tonquin Geologic target area. Rank these trail priorities in order of importance to you.

| | most important | | least important | Rating Average | Response Count |
|--|----------------|-----------|-----------------|--------------------------|----------------|
| Protecting the kolk ponds and basalt geologic features west and northwest of the Coffee Lake Creek drainage and north of Graham's Ferry Road. (Map area 1A) | 33.3% (3) | 22.2% (2) | 44.4% (4) | 2.11 | 9 |
| Protecting additional portions of the Coffee Lake floodplain area to support effective wetland restoration. (Map area 1B) | 44.4% (4) | 33.3% (3) | 22.2% (2) | 1.78 | 9 |
| Protecting lands along Coffee Lake Creek and Rock Creek linking together public lands and improving connections for wildlife between the Willamette and Tualatin rivers. (Map area 1C) | 22.2% (2) | 44.4% (4) | 33.3% (3) | 2.11 | 9 |
| | | | | <i>answered question</i> | 9 |
| | | | | <i>skipped question</i> | 1 |

3. Are there other priorities that the Metro Council should consider in this target area? If so, please specify.

Question 1 - item ranked #4 (acquiring a trail easement along Hedges Creek...) "CITY SHOULD DO THIS" Wildlife crossings/protections at Grahams Ferry Rd./Coffee Creek crossing.
 Work new acquisitions to tie into acquisitions and emphasize large scale wetland restoration.
 FEWER TRAILS!! Please acquire more lands, especially wetlands and uplands for turtles and red legged frogs.

4. Do you have suggestions about partnerships Metro should pursue or other innovative ways to leverage regional funding and enhance this natural area? If so, please specify.

Cities of Wilsonville/Tualatin and Sherwood - ODOT and WaCoDT re: transportation corridors and new road locations, Tualatin River National Wildlife Refuge, Raindrops to Refuge, OWEB &DU & NFWF re: wetlands restoration.

5. Do you have any other comments about this target area? If so, please specify.

Tie the natural areas acquisitions into the trails planning to resume access with local communities and local trails connecting to regional trails.
 Restore this great wetland area!
 Please keep trails out of sensitive wildlife habitats. Thanks!
 I don't know enough to prioritize. Please protect as much as you can. I would prefer less paved trails - more mountain bike and hiking trails.

