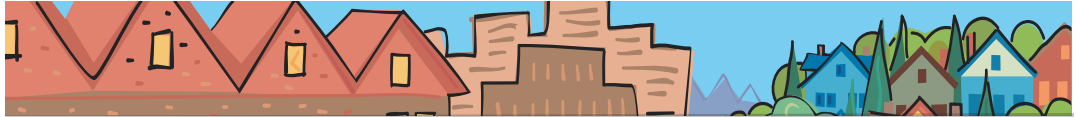


Carl Hosticka

METRO COUNCIL DISTRICT 3 NEWS



METRO

PEOPLE PLACES
OPEN SPACES

Carl Hosticka
represents
District 3, which
includes portions
of Washington and
Clackamas counties
and the cities of
Beaverton, Durham,
King City, Sherwood,
Tigard, Tualatin and
Wilsonville.



A long walk along the Tualatin River

You're at the Tualatin National Wildlife Refuge near Sherwood or at Cook Park in Tigard, and you want to go for a walk along the Tualatin River. Wouldn't it be nice if you could literally walk for miles along the river—to Brown's Ferry Park in Tualatin, and then all the way to Lake Oswego?

Creating such a regional trail along the south bank of the Tualatin River is the main reason Metro recently acquired a half acre of land on the river east of Brown's Ferry Park. The property was purchased in October as part of Metro's Natural Areas Program approved by the voters in 2006. The new natural area includes 110 feet of river frontage along the Tualatin River and the confluence with Saum Creek. It is located in Clackamas County off of Southwest Tualasaum Drive.

Assembling such a regional trail along the Tualatin River will take years, and mostly patience. We work with willing sellers, and sometimes we have to wait a long time for opportunities to arise. But this new purchase represents a piece of the future trail system, and we hope to build up connections over time.

This property is in the Tualatin River Greenway target area, one of 27 areas identified for acquisition in the \$227.4 million Natural Areas bond measure. In September, the Metro Council finished its process of defining the acquisition goals for each target area and approved a "refinement plan" for each. With that, the staff can proceed to work with willing sellers and purchase land. Already, 13 properties across the region have been acquired, totaling 530 acres and two miles of stream frontage. We expect to protect 3,500 to 4,500 acres over the course of the program.

And all that is possible thanks to you, the voters, who approved our Natural Areas bond measure. We would not be able to do this important work without your support. You are making it possible for us to preserve the region's water quality and fish and wildlife habitat, while facilitating greater access to nature close to home. I look forward to seeing more properties acquired, so I can take that long walk along the river someday.

—Carl Hosticka

Metro opens first new nature park with 1995 bond measure funds

Along with partner North Clackamas Parks and Recreation District, Metro and the region's neighbors, hikers and nature lovers celebrated Mount Talbert Nature Park's official opening to the public on Oct. 6.

Designed as a refuge for green spaces and wildlife in a primarily urban area, Mount Talbert is the largest of the undeveloped buttes in northern Clackamas County, rising as a forested green sentinel overlooking the busy I-205 and Sunnyside Road interchange. The nature

continued

Mount Talbert park

continued from page 1

park boasts a revitalized oak savanna and a wet prairie meadow, two increasingly rare habitats in the Northern Willamette Valley. In addition, a variety of wildlife makes its home at Mount Talbert, including deer, coyotes, raccoons, rubber boas, pileated and hairy woodpeckers, white-breasted nuthatch, Western tanager and many more.

Offering much more than a home to wildlife, the new nature park will also give people from around the region miles of new hiking trails, information about the cultural and natural resources found there and greater access to nature close to home.

Metro and North Clackamas Parks and Recreation District purchased nearly 200 acres at Mount Talbert with funds from Metro's 1995 bond measure. The protected area includes the top of the former lava dome as well as the west facing slopes visible to the tens of thousands of people that travel I-205 every day or shop at the Clackamas Town Center.

The main access to Mount Talbert Nature Park is off of Southeast Sunnybrook Boulevard on Mather Road. The area includes parking, restrooms, a picnic shelter and paved trails, as well as 4.2 miles of hiking trails that loop around the natural area and lead to the summit.

For more information, call North Clackamas Parks and Recreation District at (503) 794-8041.

Integrating Habitats design competition closes Dec. 17

Ever wondered how our region could work to better protect its natural areas alongside development? If so, make sure to submit your ideas on designing the built environment with nature in mind to Metro's international design competition, Integrating Habitats. But hurry – the deadline to enter the competition is Dec. 17.

Along with co-hosts Portland Bureau of Environmental Services, Clean Water Services, and Clackamas County's Water Environment Services department, Metro announced the innovative competition in June, which challenges participants to balance development in the region with

conservation of our much-loved wildlife areas.

The competition is open to individuals from a variety of relevant disciplines that range from architecture and engineering to wildlife biology. Participants work in teams to devise site plans that successfully incorporate surrounding natural areas in site design, development and construction.

A world-renowned jury will select the best designs. In addition, citizens and communities will select their favorite designs through the People's Choice Awards, a web-based gallery voting system.

Interested parties should complete the online registration form and send a \$125 nonrefundable registration fee by Dec. 17. For information, call (503) 797-1555, e-mail integratinghabitats@metro-region.org, or visit www.metro-region.org/integratinghabitats.

Community member needed for Metro advisory committee

Metro's Committee for Citizen Involvement (MCCI) has an opening for a citizen representative who lives in Metro Councilor Hosticka's District 3, which includes portions of Washington and Clackamas counties and the cities of Beaverton, Durham, King City, Sherwood, Tigard, Tualatin and Wilsonville. MCCI works to aid communication between citizens and the Metro Council, and provides advice and feedback on public outreach issues to the Council and staff. Members attend meetings the first Wednesday of each month. For information and an application, call (503) 797-1539, visit www.metro-region.org and search for "MCCI," or send e-mail to mcci@metro.dst.or.us. On the web site, use the "Who is my councilor?" tool to find your council district.

Councilor Carl Hosticka contact information

Address	600 NE Grand Ave. Portland, OR 97232
Phone	(503) 797-1549
Fax	(503) 797-1793
E-mail	hostickac@metro.dst.or.us
Assistant	Linnea Nelson
Phone	(503) 797-1886
E-mail	nelsonl@metro.dst.or.us
Web	www.metro-region.org

About Metro

Clean air and clean water do not stop at city limits or county lines. Neither does the need for jobs, a thriving economy and good transportation choices for people and businesses in our region. Voters have asked Metro to help with the challenges that cross those lines and affect the 25 cities and three counties in the Portland metropolitan area.

A regional approach simply makes sense when it comes to protecting open space, caring for parks, planning for the best use of land, managing garbage disposal and increasing recycling. Metro oversees world-class facilities such as the Oregon Zoo, which contributes to conservation and education, and the Oregon Convention Center, which benefits the region's economy.

Your Metro representatives

Metro Council President
David Bragdon

Metro Councilors
Rod Park, District 1
Brian Newman, District 2
Carl Hosticka, District 3
Kathryn Harrington, District 4
Rex Burkholder, District 5
Robert Liberty, District 6

Auditor
Suzanne Flynn

November 2007 bc/final
Printed on recycled paper