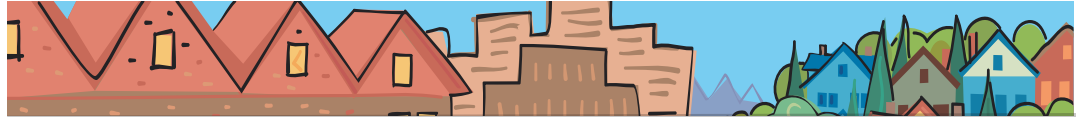


# Rod Park

## METRO COUNCIL DISTRICT 1 NEWS



**METRO**

PEOPLE PLACES  
OPEN SPACES

**Rod Park represents District 1, which includes Fairview, Gresham, Happy Valley, Maywood Park, Troutdale, Wood Village, Damascus and portions of East Portland.**



### A message from Rod Park

October turned out to be a “school” of salmon in the Sandy this month! Several important events happened last month celebrating the presence of salmon in the Sandy River. First was the Salmon Festival at Oxbow Park, which celebrated the historic connection, shared between people, nature and wild salmon.

The second event was a gala and auction celebrating Western River Conservancy’s (WRC) Salmon in the Sandy project with support from Portland General Electric. Over the summer and into this fall, beautiful signature salmon sculptures could be seen around different parts of the region. If you missed checking them out, go to WRC’s website (<http://www.westernrivers.org>) and click on the “Salmon for the Sandy” to view the 32 sculptures.

I had the opportunity to attend this gala and view the sculptures and was amazed at the work of the various artists. As a result of the hard work of various organizations, Sandy River salmon and steelhead now have a path from the slopes of Mount Hood to the Columbia Gorge and onward to the Pacific Ocean. The Sandy is the only free running river this close to a metropolitan region and it is right in our back yards! And soon, residents in East County will be able to access areas along the Sandy and Little Sandy Rivers. Check out WRC’s website for more information.

— Rod Park

### Council votes to continue studying building headquarters hotel

On September 27, the Metro Council voted to authorize the creation of a funding plan for the potential development of a 600-room publicly owned, privately operated headquarters hotel near the Oregon Convention Center (OCC).

Council did not make a final decision on the actual development of a hotel, instead it requested a comprehensive financing plan for the project including details of sufficient funding to minimize risk to Metro’s general resources. Without this, the hotel will not be developed.

This newest decision allows another seven-month period to identify additional funding before a final decision to occur in spring 2008.

Metro staff will negotiate with other public entities and potential beneficiaries of OCC to secure additional funding for the hotel project. Metro staff has been in contact with potential public and private partners to discuss their involvement in the discussion regarding the funding plan. Metro’s chief operating officer will report to council by Nov. 1 regarding the progress of these partnership discussions. Council could take action based on the staff report, if necessary, as early as Nov. 8. More information on the Convention Center hotel project, including the studies and analyses commissioned by Metro, can be found online at [www.metro-region.org/hotel](http://www.metro-region.org/hotel).

## Regional Transportation Plan open for public review

One of Metro's key regional roles is to lead the discussion on transportation planning and allocating limited funding for transportation projects. The long-range blueprint for this effort is called the Regional Transportation Plan (RTP), which is currently in a four-year update. From Oct. 15 through Nov. 15, the public will have the opportunity to weigh in on the part of the plan that must fulfill federal requirements.

Metro asks that residents and businesses either provide feedback on the information posted at [www.metro-region.org/rtp](http://www.metro-region.org/rtp), or attend one of four public open houses to have questions answered or to submit testimony. Public input will help the Metro Council make major decisions about transportation investments that will have a profound impact on our region's economy and quality of life.

Comments may be submitted via a comment form on the project web page, by e-mail to [rtp@metro-region.org](mailto:rtp@metro-region.org), or by US mail to RTP Comments, Metro Planning Department, 600 NE Grand Avenue, Portland, OR 97232. Hard copies of the draft plan are also available from the Planning Department.

Three public open houses/hearings are scheduled:

Nov. 8 - Hillsboro Civic Center Auditorium  
150 E. Main Street, Hillsboro  
Open house starts at 4 p.m.; hearing starts at 5 p.m.

Nov. 15 - Metro Regional Center  
600 NE Grand Avenue, Portland  
Open house starts at 1 p.m.; hearing starts at 2 .m.

For technical questions about the transportation priorities process, programs or projects, contact Kim Ellis, RTP project manager, at [ellisk@metro.dst.or.us](mailto:ellisk@metro.dst.or.us) or (503) 797-1617. For questions about public involvement, contact Pat Emmerson at [emmersonp@metro.dst.or.us](mailto:emmersonp@metro.dst.or.us) or (503) 797-1551.

## Metro issues draft request for proposal to transport waste

Metro has issued a draft request for proposals (RFP) to transport waste from the region 150 miles east to the Columbia Ridge landfill in Gilliam County, Oregon. The process is open to the public, government officials, community groups and transportation industry representatives to comment on the draft until Nov. 7 2007. After comments are received, the draft will be revised and a final RFP will be issued by early 2008.

In addition to the opportunity to review and comment on the draft RFP, citizens are invited to learn more about the waste transport contract process and provide input at a final public meeting on Nov. 7 from 6 to 7:30 p.m. in the Council Chamber, 600 NE Grand Ave., in Portland.

The Metro region generates 2.6 million tons of waste each year. Approximately 532,000 tons comes through Metro's Oregon City and Northwest Portland transfer stations and is trucked to the Columbia Ridge landfill. The current contract expires Dec. 31, 2009. This gives the Metro Council and the region's citizens an opportunity to evaluate different options - including truck, rail and barge or a combination of these modes - for moving waste to Gilliam County.

After the Metro Council, along with outside experts, examines and evaluates proposals based on elements such as cost effectiveness, reliability and community and environmental impacts, Metro will then enter into contract negotiations with one or more firms. Following a public hearing process, the Metro Council will award the contract(s).

### Councilor Rod Park contact information

Address	600 NE Grand Ave. Portland, OR 97232
Phone	(503) 797-1547
Fax	(503) 797-1793
E-Mail	<a href="mailto:parkr@metro.dst.or.us">parkr@metro.dst.or.us</a>
Assistant	Kathryn Sofich
Phone	(503) 797-1941
E-Mail	<a href="mailto:sofichk@metro.dst.or.us">sofichk@metro.dst.or.us</a>
Web	<a href="http://www.metro-region.org">www.metro-region.org</a>

## About Metro

Clean air and clean water do not stop at city limits or county lines. Neither does the need for jobs, a thriving economy and good transportation choices for people and businesses in our region. Voters have asked Metro to help with the challenges that cross those lines and affect the 25 cities and three counties in the Portland metropolitan area.

A regional approach simply makes sense when it comes to protecting open space, caring for parks, planning for the best use of land, managing garbage disposal and increasing recycling. Metro oversees world-class facilities such as the Oregon Zoo, which contributes to conservation and education, and the Oregon Convention Center, which benefits the region's economy.

### Your Metro representatives

Metro Council President  
David Bragdon

Metro Councilors  
Rod Park, District 1  
Brian Newman, District 2  
Carl Hosticka, District 3  
Kathryn Harrington, District 4  
Rex Burkholder, District 5  
Robert Liberty, District 6

Auditor  
Suzanne Flynn

November 2007 bc/final  
Printed on recycled paper