

A G E N D A

600 NORTHEAST GRAND AVENUE | PORTLAND, OREGON 97232 2736
TEL 503 797 1542 | FAX 503 797 1793



METRO

Agenda

MEETING: METRO COUNCIL/EXECUTIVE OFFICER INFORMAL MEETING
DATE: January 22, 2002
DAY: Tuesday
TIME: 2:00 PM
PLACE: Council Annex

CALL TO ORDER AND ROLL CALL

- I. UPCOMING LEGISLATION**
- II. OCC EXPANSION UPDATE** Moss
- III. ART PROPOSED FOR OCC** Moss
- IV. CONFERENCE UPDATE** Peck/Hoglund
- V. EXECUTIVE OFFICER COMMUNICATION**
- VI. COUNCILOR COMMUNICATIONS**

ADJOURN

012202cc-01

OCC EXPANSION

Oregon Convention Center

EXPANSION



Jeffrey A. Blosser, Facility Director Oregon Convention Center
 Karl Schulz, Senior Project Manager
 800.791.2250 • www.oregoncc.org



OCC EXPANSION

Oregon Convention Center

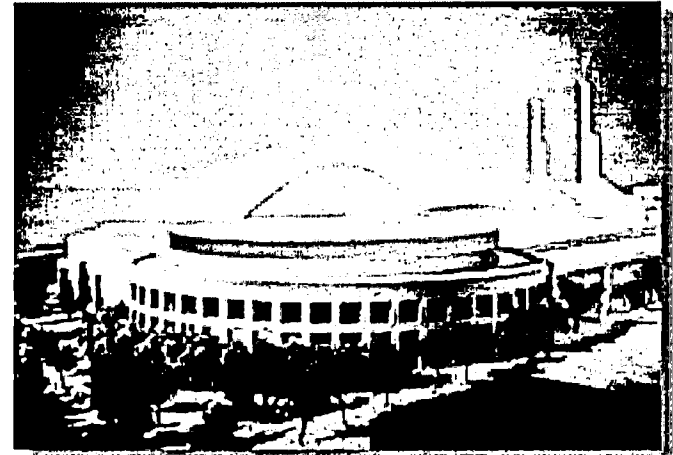
EXPANSION

Construction

- Over 209,429 labor hours worked on site to date.
- Installed over 25,000 cubic yards of concrete out of 31,500.
- Removed over 200,000 cubic yards of dirt from site.
- Started installation of 4,200 tons of steel.
- Started installation of over 75,000 linear feet of piping and 250,000 linear feet of wiring.
- Completed the temporary shoring of C Hall and demolition of the south wall.
- Installed new emergency generator, HVAC controls, and fire alarm system for OCC.

Project Schedule

- Excavation completed ahead of schedule.
- Parking Garage concrete work completed on schedule.
- Completed shear walls ahead of schedule.
- Started steel erection ahead of schedule.
- Next Milestones
 - Complete steel erection by April 1, 2002
 - Exterior skin construction to start in March
 - Occupancy of Parking Garage by April 15, 2002
 - Completion scheduled for April, 2003



OCC EXPANSION

Oregon Convention Center

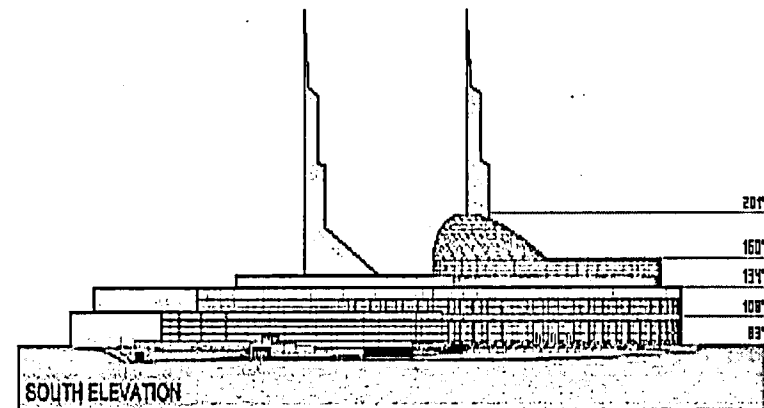
EXPANSION

Project Scope

- Added GMP Alternates via savings from bidding
 - Construction of Tenant Improvements for Admin.
 - Replace existing controls systems to match Expansion.
 - Replace existing Fire and Life Safety System
 - Provide Hall E air wall
 - \$2.2 Million of added scope.
- Future Scope Additions funded by CIP
 - Existing Carpet Replacement
 - Kitchen and OPS area remodel
 - Signage Upgrade and Enhancement

Workforce Program

- Hoffman exceeding goals for apprentice program.
- In 2001, average 26.14% labor force apprentice, 6.14% over goal.
- Over 75 subcontractors in the program.
- 19.8% MBE/WBE participation to date.



OCC EXPANSION

Oregon Convention Center

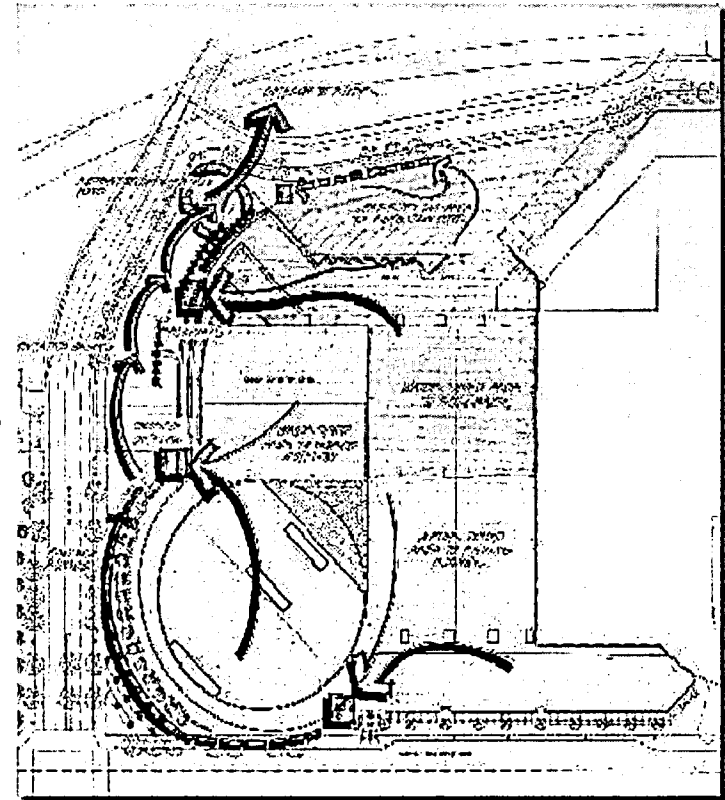
EXPANSION

Sustainability Program

- Rain Garden construction for storm water management.
- Recycled over 2,000 tons of materials.
- Using recycled paint.
- ZGF incorporated sustainability features into design.
- Enrolled in Earth Advantage program with PGE.

Art Program

- Completed relocation of “The Dream” and “Host Analog”
- Art Committee and MERC has recommended the contracting of seven Artists
Art Projects are:
 - Tile Art at Restroom
 - Plaques at Lobby
 - Light Fixture Scones for Plaques
 - VIP Area Paintings
- Pending contract authorization by Metro
- Major Artist for new linear lobby is pending approval by Art Committee



RAIN GARDEN CONCEPT

OCC EXPANSION

Oregon Convention Center

EXPANSION

Current Specs:

- 150,000-sq. ft. exhibit space
- 25,200-sq. ft. of ballroom space (one ballroom)
- 30,000-sq. ft. of meeting space (28 meeting rooms)
- 10 loading docks
- 750 total parking spaces (surface parking lot)

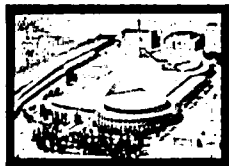
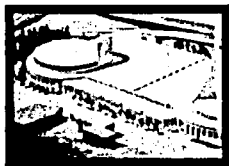
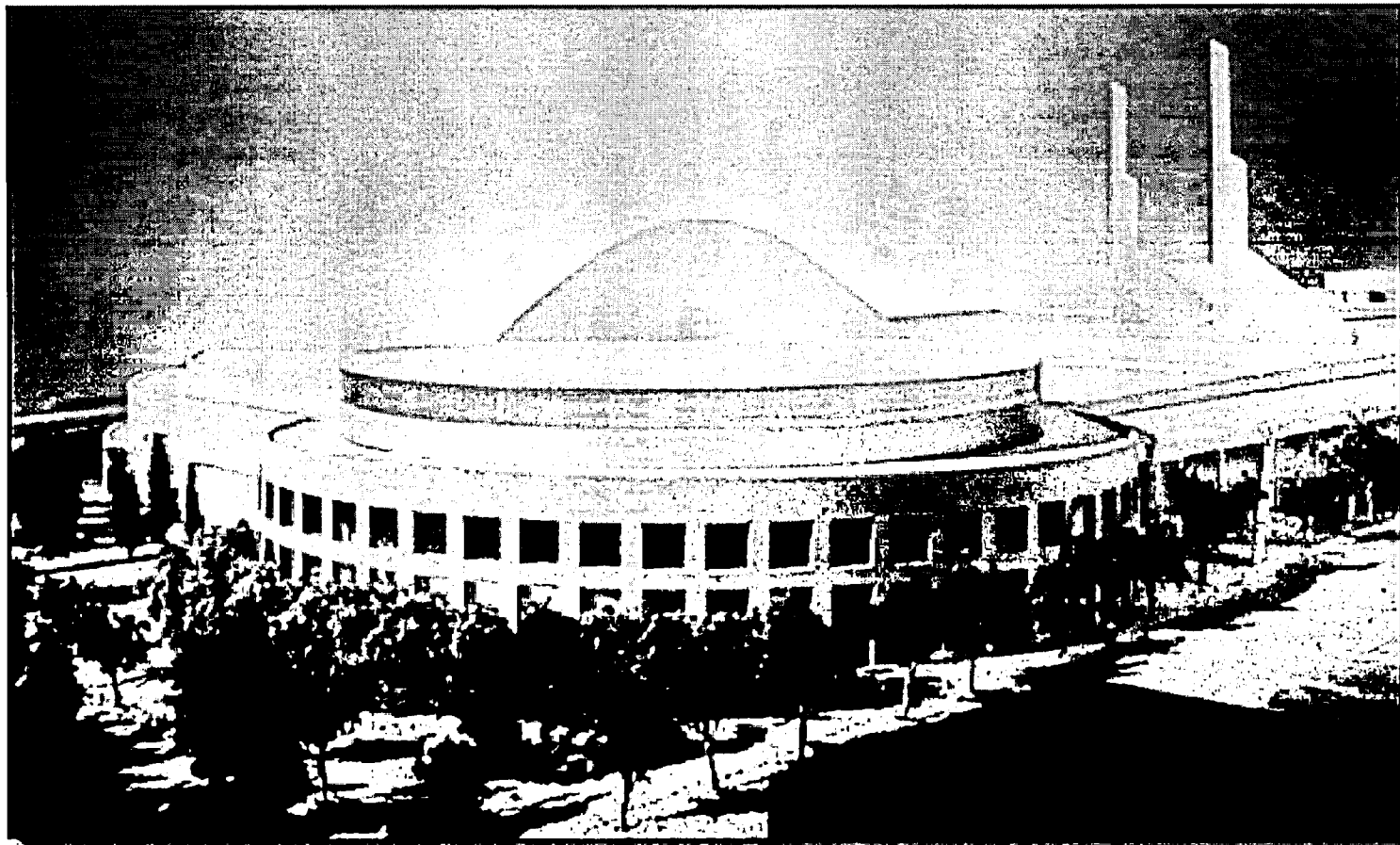
Expanded Specs: (estimated)

- 255,000-sq. ft. exhibit space
- 59,600-sq. ft. of ballroom space (2 ballrooms)
- 58,000-sq. ft. of meeting space (50+ meeting rooms)
- 21 loading docks
- 800 total spaces (covered garage)

OCC EXPANSION

Oregon Convention Center

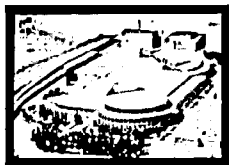
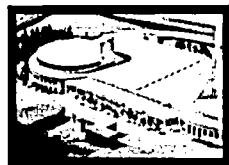
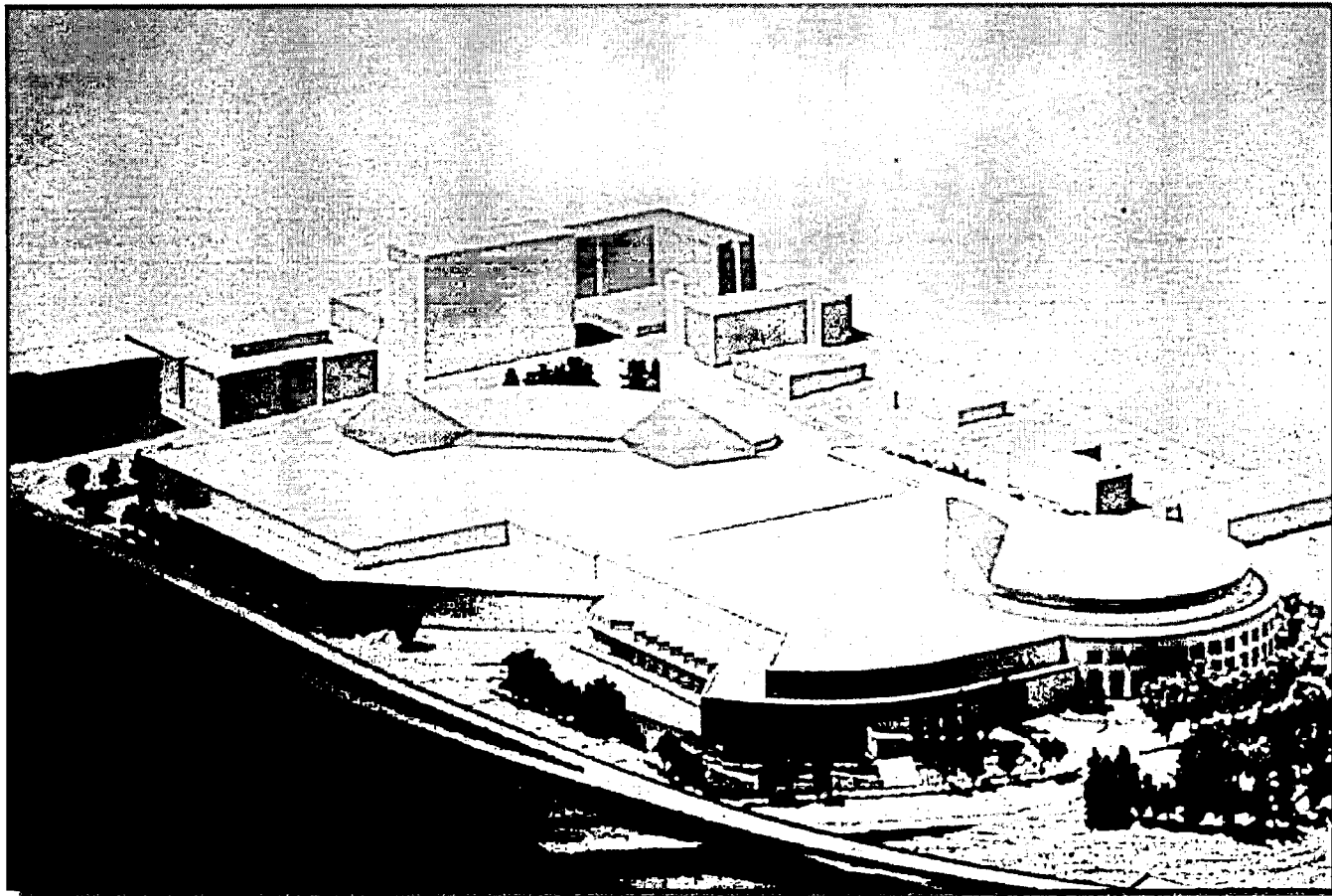
EXPANSION



OCC EXPANSION

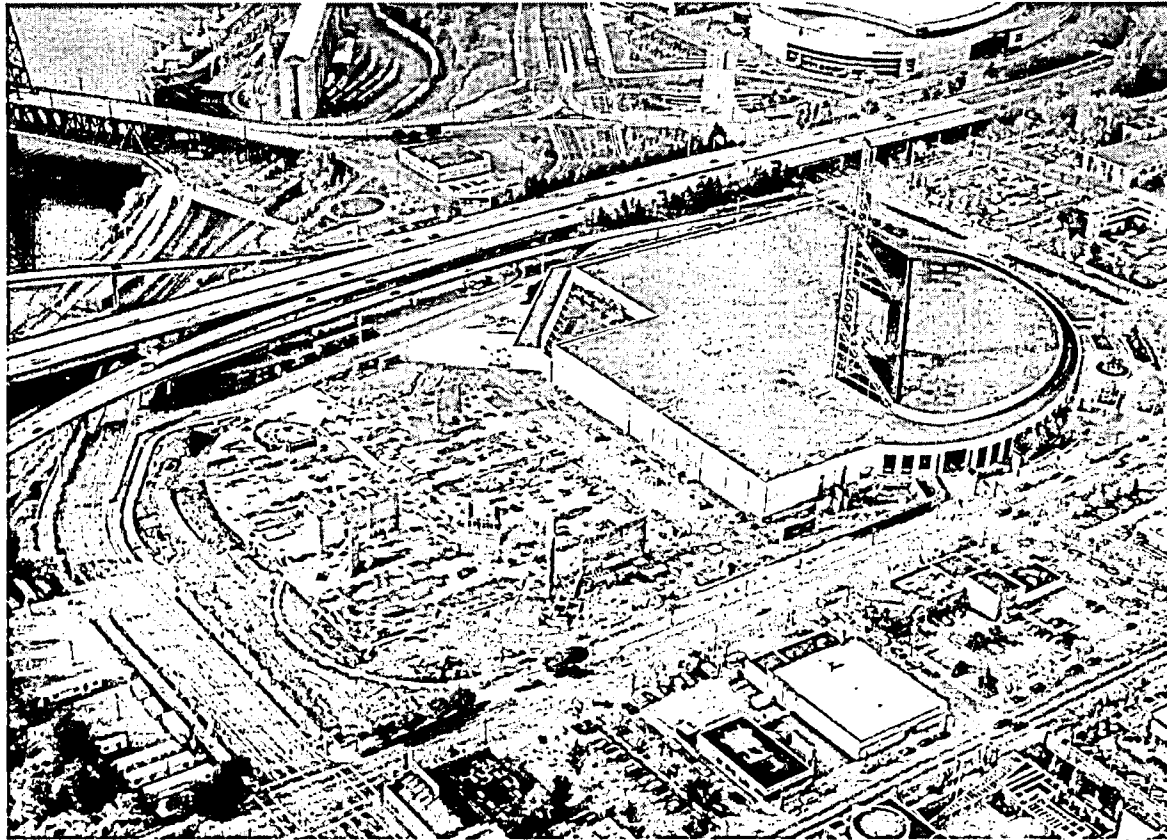
Oregon Convention Center

EXPANSION



OCC EXPANSION

November Aerial



March

April

May

June

July

August

September

October

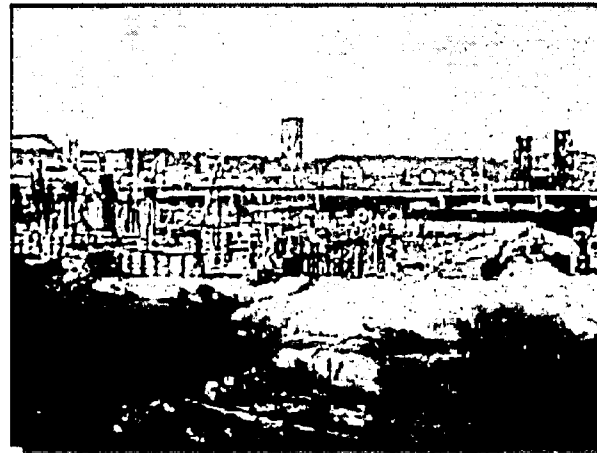
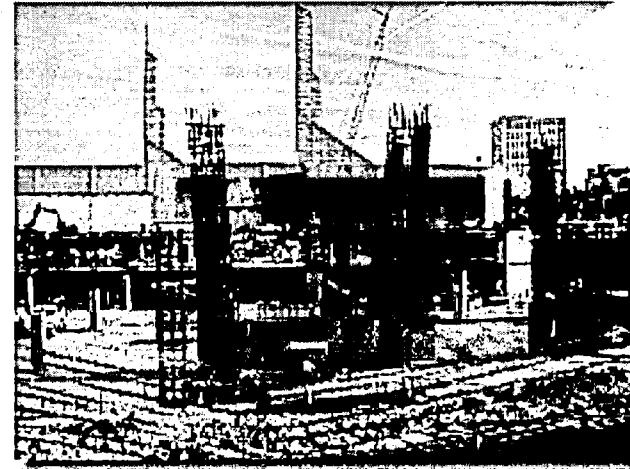
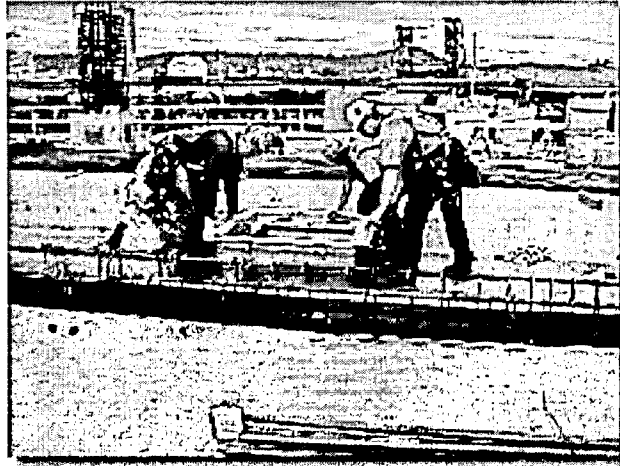
November

Oregon Convention Center

EXPANSION

OCC EXPANSION

CONSTRUCTION

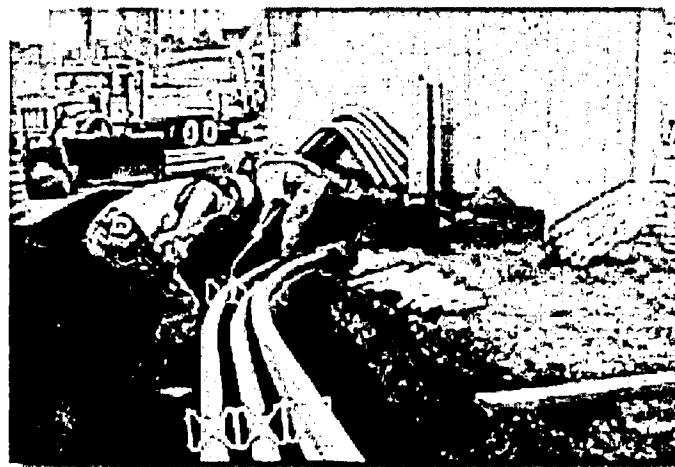
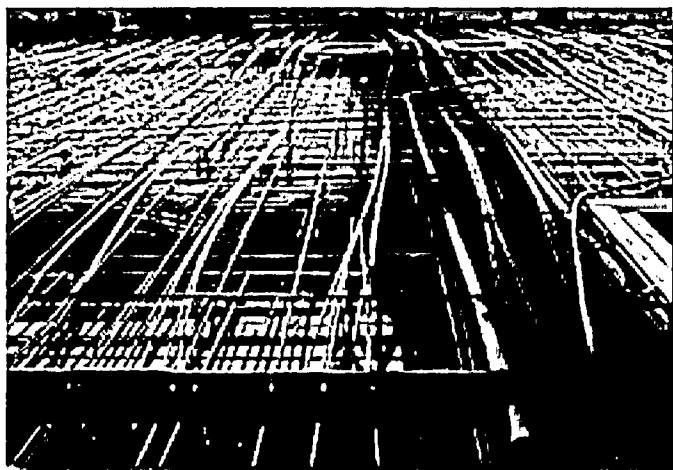
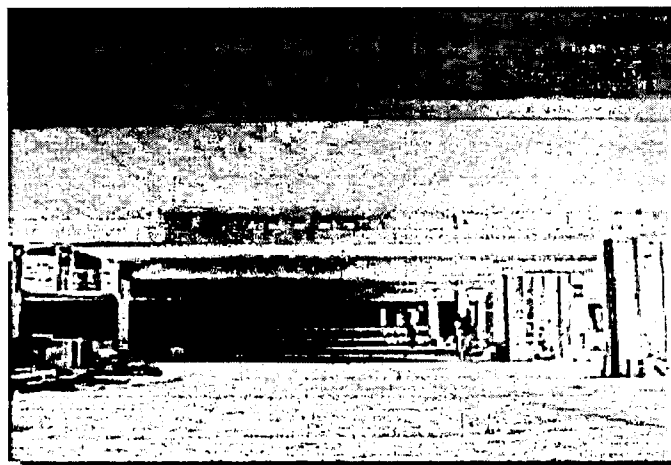
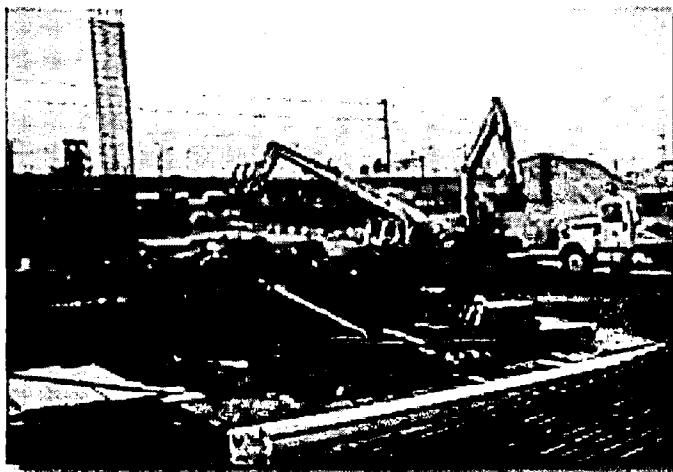


Oregon Convention Center

EXPANSION

OCC EXPANSION

Oregon Convention Center

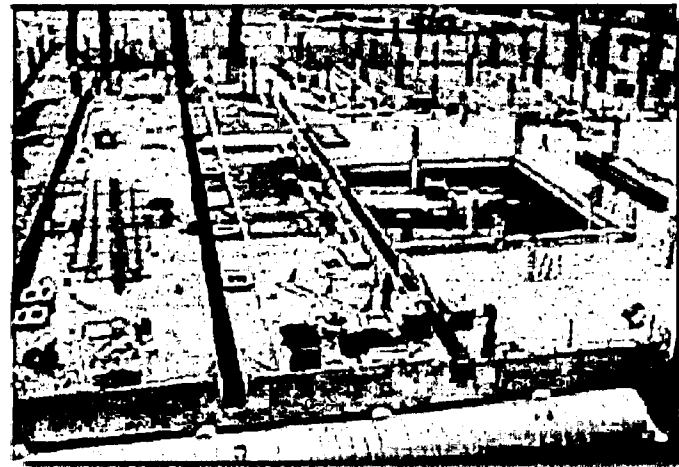
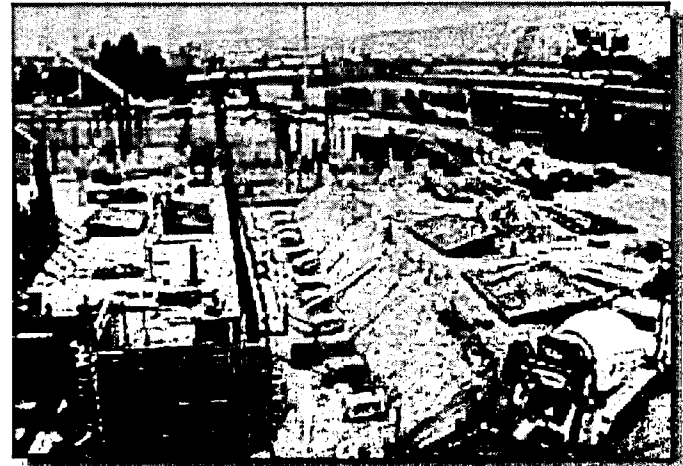


CONSTRUCTION

EXPANSION

OCC EXPANSION

Oregon Convention Center

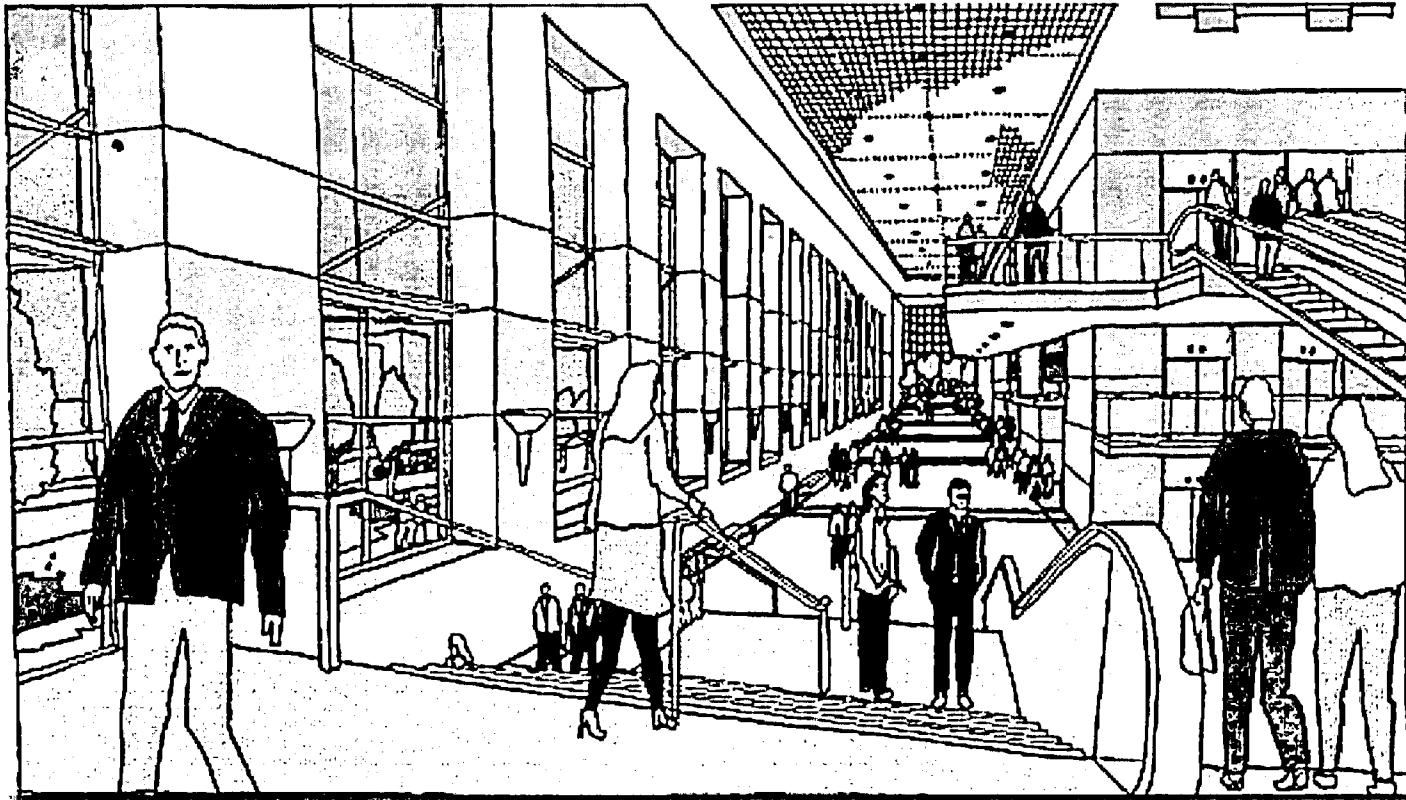


CONSTRUCTION

EXPANSION

OCC EXPANSION

Groundbreaking for Expansion April 2001



**Completion of OCC Expansion
is estimated to be in April 2003**

Oregon Convention Center

EXPANSION



Regional Arts &
Culture Council

OREGON CONVENTION CENTER EXPANSION

PUBLIC ART PROGRAM

11/27/01

620 SW Main St., Suite 420
Portland, OR 97205-3037
Tel: 503.823.5111
Fax: 503.823.5432
Email: info@racc.org
TDD# 503.823.6868
www.racc.org

VIP Lounge:

Rick Bartow (South Beach, OR)
3 paintings depicting animal heads-
hallway wall \$10,000

Rae Mahaffey (Portland)
3 abstract paintings – inside wall 10,000

Ballroom Level Plaques:

Lillian Pitt, Gail Tremblay
Ken Macintosh (Portland)
26 cast bronze plaques
Native American images and texts 50,000

Ballroom Level Sconces:

Brent Markee (Seattle)
33 glass and bronze sconces 49,500

Restrooms:

Ronna Neuenschwander (Portland)
1 men's, 1 women's, meeting room level
ceramic mosaics- nostalgic, 50's style 22,500

Dana Louis (Portland)
1 men's, 1 women's, ballroom level
Painted tile murals, cast glass bottles
Cast glass tiles 22,500

Connie Kiener & Sherrie Wolf (Portland)
1 set ballroom level, 1 set meeting room level
framed ceramic paintings, hung as in a gallery 45,000

Estimated Total \$209,500

Interior Street - in progress

Donation from Multnomah County

Isaka Shamsud-Din

Painting commissioned for Justice Center : *Bilalian Odyssey*

OCC EXPANSION ART COMMITTEE

George Bell	MERC
David Bragdon, Chair	Metro
Carol Edelman	Interiors architect, original art committee
Bob Frasca	ZGF, original art committee
Terri Hopkins	Curator, Marylhurst Art Gym
Larry Kirkland	Artist, original art committee
Harold Lasley	Multnomah Co., OCC Expansion A
Elizabeth Mead	Artist, Assoc. Professor PSU
Barbara Steinfeld	Cultural Tourism Director, POVA
Mark Williams	OCC

Staff:

Eloise Damrosch	RACC Public Art Director
Karl Schulz	OCC Project Manager
John Thompson	ZGF



METRO
PEOPLE PLACES
OPEN SPACES

WHERE DO WE GROW FROM HERE?

LET'S TALK

MARCH 15-16

2002 REGIONAL CONFERENCE AND COMMUNITY WORKSHOPS

YOUR NEIGHBORHOOD. YOUR FUTURE.

Be sure to watch live Northwest NewsChannel 8 town hall at 7 p.m. Friday, March 15



www.metro-region.org

About Metro

Metro serves 1.3 million people who live in Clackamas, Multnomah and Washington counties and the 24 cities in the Portland metropolitan area.

Metro provides transportation and land-use planning services and oversees regional garbage disposal and recycling and waste reduction programs.

Metro manages regional parks and greenspaces and owns the Oregon Zoo. It also oversees operation of the Oregon Convention Center, the Portland Center for the Performing Arts and the Portland Metropolitan Exposition (Expo) Center, all managed by the Metropolitan Exposition-Recreation Commission.

For more information about Metro or to schedule a speaker for a community group, call (503) 797-1510 (public affairs) or (503) 797-1540 (council).

Metro is governed by an executive officer, elected regionwide, and a seven-member council elected by districts. An auditor, also elected regionwide, reviews Metro's operations.

Executive Officer – Mike Burton; Auditor – Alexis Dow, CPA; Metro Council – Presiding Officer Carl Hosticka, District 3; Deputy Presiding Officer Susan McLain, District 4; Rod Park, District 1; Bill Atherton, District 2; Rex Burkholder, District 5; Rod Monroe, District 6; David Bragdon, District 7

Regional livability sponsors



Oregon Department of Land Conservation and Development



NW Natural

Business and community supporters

- American Planning Association, Oregon Chapter
- Centennial Bank
- Costa Pacific Homes
- Fregonese Calthorpe Associates
- InFocus Corporation
- Kaiser Permanente
- Lindberg/Kirk/Millar
- Metro Portland Housing Industry Foundation
- PG&E National Energy Group
- Port of Portland
- Russell Development
- Standard Insurance
- URS Corporation

Let's Talk

This region we call home is a special place of natural beauty, unique neighborhoods, a vibrant downtown and diverse communities. The challenge facing all of us who live, work, go to school or do business here is how to keep this region a great place to live in the years ahead. Where do we grow from here?

In 2002, your elected Metro Council will decide whether to expand the urban growth boundary and will make related decisions about protecting fish and wildlife habitat, providing parks, greenspaces and trails and serving our communities with transportation. Many people from across the region already have shared their thoughts and ideas about these issues with Metro at a series of small group discussions called Let's Talk coffee talks.

On March 15-16, 2002, Metro invites you to join the conversation at a regional conference and a series of community workshops, tours and hands-on activities. The events provide a number of ways to participate, whether you have a day or a few hours.

All conference and workshop sites are ADA and transit accessible.

For up-to-date information, visit our web site at

www.metro-region.org



FRIDAY, MARCH 15

REGIONAL CONFERENCE

Metro's regional conference, 8 a.m. to 4:45 p.m. at the Oregon Convention Center, will bring residents, business and community leaders, interest groups, elected officials and public agency staff together for a lively discussion that will provide feedback to the Metro Council about options, tradeoffs and costs.

Oregon Convention Center
777 NE Martin Luther King Jr. Blvd.
Portland; bus lines 6, 8 and 10;
convention center MAX station

Conference schedule at a glance

7 a.m. Registration
7:30-8:30 a.m. Breakfast
Sponsored by Spirit Mountain Casino
8:30 a.m. Plenary and keynote speech

9:45-11:45 a.m.
Let's talk viewpoints

Choice of panel sessions

- 1 Where do we grow from here?
- 2 Can we keep it green?
- 3 How can transportation serve our communities?

Noon-1:30 p.m.

Let's talk next generation
Lunch will be served in the ballroom
Presentation featuring student projects tied to Metro's livability curriculum.

1:45-4:45 p.m.

Let's talk issues
Tradeoffs and choices

An interactive opportunity to weigh options and set priorities for managing growth. Your vote will count with electronic polling.

SATURDAY, MARCH 16

COMMUNITY WORKSHOPS

Join your neighbors in a lively discussion about regional issues with a local focus at one of the Let's Talk community workshops sponsored by Metro in cooperation with our local government partners. The workshops, which begin at 8 a.m., are free and will include a choice of in-depth sessions about the issues.

Let's Talk East Metro
Gresham, Troutdale, Fairview, Wood Village and Maywood Park
St. Henry Catholic Church
346 NW First, Gresham
Bus line 9
Sponsored by Center Oaks Development

Let's Talk Southeast Metro
Oregon City, Milwaukie, Rivergrove, Johnson City, Gladstone, Happy Valley and Damascus
LaSalle High School
11999 SE Fuller Rd., Milwaukie
Bus lines 79 and 31

Let's Talk Southwest Metro
Wilsonville, West Linn, Lake Oswego, Sherwood, Tualatin, Tigard, Beaverton, King City and Durham
Fowler Middle School
10865 SW Walnut, Tigard
Bus line 45



Let's Talk West Metro
Hillsboro, Forest Grove and Cornelius
Washington County Public Services Building
155 N. First Ave., Hillsboro
Bus lines 46 and 57
Hatfield Government MAX station

Let's Talk Portland
3rd annual Neighborhood Association Summit 2002. Continuing a vision and increasing participation for Portland's neighborhood association system. Metro workshops for Portland residents will be offered at the summit sponsored by the city of Portland Office of Neighborhood Involvement.
Cleveland High School
3400 SE 26th Ave., Portland
Bus lines 9 and 10

TALK ABOUT THE FUTURE TOURS

Saturday afternoon, step on board and take a look into the future. Participants will have a first-hand look at the building blocks of Metro's 2040 plan. The tours will visit innovative redevelopment projects, regional parks and green-spaces, transit-oriented development projects, fish-friendly "green" streets and the urban growth boundary.

Tours depart from each community workshop location at 1:30 p.m. (the Portland tour departs at 2:30). Tours are \$5 for adults, free for children 8 to 18 (not recommended for younger children).

Additional information about the tours and hands-on activities will be featured in Metro's spring 2002 GreenScene. Metro GreenScene is available online at www.metro-region.org. Call (503) 797-1850 for a copy.

FEATURED SPEAKERS AT THE REGIONAL CONFERENCE

Keynote

JACK OHMAN
REFLECTIONS OF GROWTH
Illustrative commentary at its best

Author and internationally syndicated political cartoonist Jack Ohman will draw from two decades of "uncompromising, pointed and sharp-witted" pictorial satire.



Fred Bruning, president, Center Oaks Properties

Mike Houck, urban naturalist, Audubon Society of Portland

Don Hamilton, politics and transportation reporter, Portland Tribune

Fred Hansen, general manager, Tri-Met

Rudy Kadlub, chief executive officer, Costa Pacific Homes

Gerrit Knaap, director of research, National Center for Smart Growth, University of Maryland

Gussie McRobert, commissioner, Oregon Land Conservation and Development Commission

Don Morissette, president, Don Morissette Homes

John W. Russell, president, Russell Development Company, Inc.; Oregon Transportation Commission

Sarah Sameh, director, Alternatives to Growth Oregon

Bruce Starr, state representative, co-chair, House Transportation Committee

Ellen Vanderslice, architect, AIA; president, America Walks

Sara Vickerman, director, Defenders of Wildlife West Coast office

Max Williams, state representative, co-chair, House Land Use and Regulatory Fairness Committee (invited)

Bill Wyatt, executive director, Port of Portland

James A. Zehren, attorney, Stoel Rives

REGISTRATION

Friday conference – Register online at Metro's web site www.metro-region.org or send your payment with the registration form. See registration form for fees. Questions about conference registration? Call **(503) 259-0739**.

Friday scholarships – A limited number of scholarships are available for the conference. To request a scholarship packet, call **(503) 259-0739**.

Saturday workshops and tours – To register for the workshops and tours, call **(503) 797-1850**. Tour space is limited, so call early. Workshops are free; tours are \$5 for adults, free for children 8 to 18 (not recommended for younger children).



MARCH 15-16, 2002

Regional Conference and Community Workshops
LET'S TALK

WHERE DO WE GROW FROM HERE?



RESORTED STANDARD
U.S. POSTAGE PAID
PORTLAND, OR
PERMIT NO. 2025

REGIONAL CONFERENCE

FRIDAY, MARCH 15, 2002

8 a.m. to 4:45 p.m.

Oregon Convention Center

Register online at www.metro-region.org

Register by mail – Send completed registration form along with check or credit card information to:
2002 Metro Regional Conference
Plans & Actions
PO Box 6807
Aloha, OR 97007

Phone: (503) 259-0739
Fax: (503) 259-0838

Please keep a copy of this form for your records.

REGISTRATION FORM PLEASE PRINT

LAST NAME _____	FIRST NAME _____	
ORGANIZATION _____	TITLE _____	
TELEPHONE _____	FAX _____	E-MAIL _____
ADDRESS _____		
CITY _____	STATE _____	ZIP _____
MEAL RESTRICTIONS _____		

Choose one conference track

- Where do we grow from here?
 Can we keep it green?
 How can transportation serve our communities?

Register early to save money

For reduced rate, your registration form must be postmarked by or received online on or before Feb. 28, 2002.

Cancellation – There is a \$20 non-refundable fee if you cancel your registration on or before March 1; refunds are not available after March 1.

REGISTRATION FEES

- Register by Feb. 28 – \$75
 Register on or after March 1 – \$100
 Lunch only (reserve by March 8) – \$25

Seniors, students, public agency staff

- Register by Feb. 28 – \$50
 Register on or after March 1 – \$55

Payment information

- Check enclosed – make payable to: 2002 Metro Regional Conference
 Credit card (circle one)
MASTERCARD VISA AMERICAN EXPRESS

CARD NUMBER _____

EXPIRATION DATE _____

CARDHOLDER NAME _____

SIGNATURE _____

THIS YEAR'S NOMINEES JASON AGAR, EUGENE • HAL BALLARD, BEAVERTON • JOE BLOWERS, PORTLAND • DANIEL BOHN, PORTLAND • DAVID M. BROOK, PORTLAND • JENNIFER CAMPOS, VANCOUVER • CITY OF BEAVERTON ENGINEERING DEPARTMENT, BEAVERTON • TROY E. COSTALES, SALEM • SHERMAN COVENTRY, PORTLAND • AYLEEN CROTTY, PORTLAND • RETA EARHART, LAKE OSWEGO • TOM GAINER, PORTLAND • LINDA GINENTHAL, PORTLAND • HAMILTON EVENTS, WEST LINN • DEBORAH HOGAN, BEND • KEIZER BIKEWAYS COMMITTEE, KEIZER • DAVE KELLEY, PORTLAND • LEUKEMIA AND LYMPHOMA SOCIETY, OREGON CHAPTER, PORTLAND • KEITH LIDEN, PORTLAND • MAC MACDONALD, ST. HELENS • CONNIE MCAYEAL, NORTH PLAINS • JANE MOORE, PORTLAND • MIKE AND CANDI MURRAY, GRESHAM • JACK NEWLEVANT, PORTLAND • BRIAN NEWMAN, MILWAUKIE • BRIAN NEWMAN AND MAYOR EUGENE GRANT, MILWAUKIE AND HAPPY VALLEY • JIM O'HORO, VANCOUVER • MAYOR ROYCE POLLARD, VANCOUVER • CAROL LEE ROGERS, ASHLAND • DIANE ROSVALL, GRESHAM • MUFFY ROY, BEND • DICK RUDISILE, MEDFORD • JOEL SHAPIRO, PORTLAND • JOEL SHAPIRO AND REPRESENTATIVE CHRIS BECK, PORTLAND • MIKE STANLEY, CANNON BEACH • THE UNKNOWN BICYCLIST, EVERYWHERE • LORI VON DER HEYDT, PORTLAND • BRENT WARD, PORTLAND • SUE WOLLING, EUGENE

Alice B. Toeclips
AWARDS PARTY

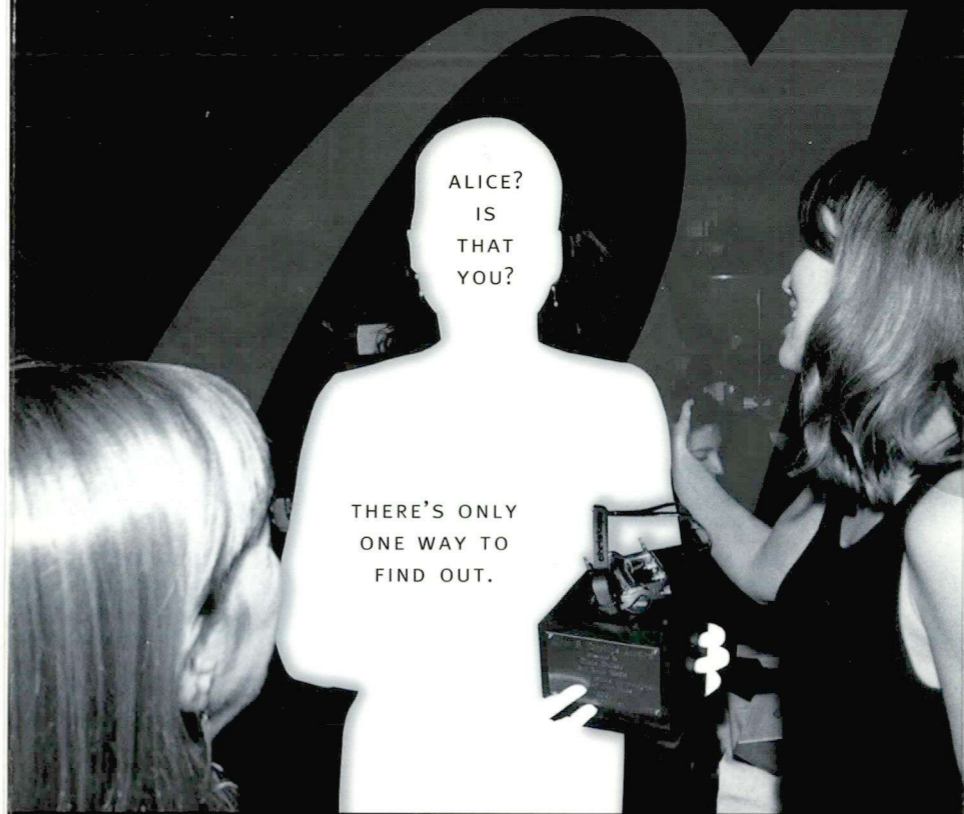


P.O. BOX 9072
PORTLAND OR
97207-9072

012202ce-04

NON-PROFIT
ORG.
U.S. POSTAGE
PAID
PORTLAND, OR
#5168

THE BICYCLE TRANSPORTATION ALLIANCE PRESENTS



ALICE?
IS
THAT
YOU?

THERE'S ONLY
ONE WAY TO
FIND OUT.

THE ALICE B. TOECLIPS AWARDS PARTY
SATURDAY, FEBRUARY 16TH, 2002, 5 PM

Alice Toklas

WAS BORN ON
APRIL 30, 1877.

AS A PROPER YOUNG LADY, TIGHTLY CORSETED AND WEIGHTED WITH SIX LAYERS OF PETTICOATS, SHE COULD INDULGE IN SUCH TEMPERATE DIVERSIONS AS A STROLL THROUGH GOLDEN GATE PARK...

BY HER LATE TEENS, THE BICYCLE WOULD OFFER SOME MEASURE OF LIBERATION: SHE COULD, AFTER ALL, GO

farther,
faster

FROM
THE BIOGRAPHY OF ALICE B. TOKLAS
BY LINDA SIMON

ON FEBRUARY 16TH, THE BTA AND OREGON STATE SENATOR KATE BROWN WILL PRESENT THE ALICE B. TOECLIPS AWARD TO THOSE AMONG OUR ILLUSTRIOUS NOMINEES WHOSE WORK IN 2001 MOST EPITOMIZES OREGON'S PROGRESSIVE SPIRIT. COME AND CHEER ON THE NOMINEES AS THEY PUT THEIR FEET TO THE PEDALS TO CYCLE TOWARD STRONGER COMMUNITIES.



CREATING SAFE, SANE AND SUSTAINABLE COMMUNITIES (ONE BIKE AT A TIME)

THE BTA IS A NON-PROFIT ORGANIZATION WORKING TO PROMOTE BICYCLE USE AND IMPROVE BICYCLING CONDITIONS THROUGHOUT OREGON.

503.226.0676

WWW.BTA4BIKES.ORG



COME AND CELEBRATE THE INDIVIDUALS, BUSINESSES AND AGENCIES WHOSE EFFORTS BRING THEIR COMMUNITIES TOGETHER AND MAKE THEM SAFER, BETTER PLACES TO RIDE A BIKE. WIN A FOLDING BIKE FRIDAY FROM GREEN GEAR, INC. IN ALICE'S ANNUAL RAFFLE CONTEST. BID ON FABULOUS AUCTION ITEMS AT ALICE'S GALA SILENT AUCTION. **NEW FOR THIS YEAR, ALICE'S AUCTION WILL RAISE FUNDS TO HELP THE BTA** MAKE BICYCLING EVEN MORE OF AN INTEGRAL PART OF LIFE IN OREGON. BID EARLY AND BID OFTEN ON AUCTION ITEMS SUCH AS:

- A TICKET TO CYCLE OREGON 2002 WITH THE COVETED #1 WRISTBAND
- A CATERED SAILBOAT CRUISE FOR FOUR WITH PORTLAND CITY COMMISSIONER CHARLIE HALES AND RESTAURATEUR-TURNED-POLITICO RON PAUL
- A STAY AT BREITENBUSH HOT SPRINGS OR THE SYLVIA BEACH HOTEL
- COOL BIKE GEAR FROM LOCAL SHOPS AND NATIONAL COMPANIES
- A GUIDED DAY-HIKE AND LUNCH IN HELLS CANYON
- A SLEEK, HIGH-TECH DUTCH COMMUTER BIKE FROM BATAVAS
- LIMITED-LABEL BTA PINOT NOIR, BOTTLED BY A BTA BOARD MEMBER
- TOURS OF PORTLAND'S HIDDEN GEMS WITH LOCAL CELEBRITIES
- SPA AND SALON SERVICES
- AND MUCH MORE...

JOIN US ON FEBRUARY 16TH! DOORS OPEN AT 5 FOR COMPLEMENTARY WINE, HORS-D'OEUVRES AND SILENT AUCTION. SILENT AUCTION CLOSSES AT 6:45, FOLLOWED BY A GOURMET BUFFET, NO-HOST BAR AND THEN...THE ALICE AWARDS PRESENTATION.

DESIGN: GRAPHEON DESIGN • PHOTOS ©2001 CHRIS HO

INDIVIDUALS

\$50 PER PERSON / \$20 PER CHILD UP TO 12 YEARS OLD
\$35 PER PERSON IF YOU'RE "LIVING LIGHTLY"

EACH \$50 TICKET INCLUDES \$10 IN "ALICE MAD MONEY" TO GET YOU STARTED AT THE SILENT AUCTION.

RESERVE A TABLE

\$500 PER TABLE OF TEN. EACH SEAT WILL RECEIVE \$10 IN ALICE MAD MONEY. A SIGN AT THE TABLE WILL DISPLAY YOUR GROUP'S NAME.

MELODY BALLROOM, 615 SE ALDER, PORTLAND

INDOOR BIKE PARKING AVAILABLE

ACCESSIBLE FROM TRI-MET BUS LINES 6, 14, 15, 70

CALL THE BTA FOR LODGING SUGGESTIONS

PRESENTED BY THE BICYCLE TRANSPORTATION ALLIANCE WITH SPECIAL THANKS TO: CITY OF PORTLAND • RUSSELL DEVELOPMENT AND MARY FELLOWS • MELVIN MARK COMPANIES • PORTLAND GENERAL ELECTRIC • BIKE FRIDAY • FLEXCAR • PRENDERGAST AND ASSOCIATES • KPFF ENGINEERING • THE BARDY TROPHY COMPANY AND GRAPHEON DESIGN



PLEASE JOIN US

COUNT ME IN! ENCLOSED IS PAYMENT FOR

___ CHILDREN'S TICKETS AT \$20 = _____

___ TICKETS AT \$50 (\$20 TAX DEDUCTIBLE) = _____

___ LIVING LIGHTLY TICKETS AT \$35 (\$5 TAX DEDUCTIBLE) = _____

___ TABLE(S) OF 10 AT \$500 = _____

PLEASE PUT THIS NAME ON OUR TABLE: _____

I WOULD LIKE TO TAKE ADVANTAGE OF THE PROVIDED CHILD-CARE.

I CAN'T MAKE THE PARTY, BUT WANT TO HELP THE BTA MAKE ALL OF OREGON'S COMMUNITIES "BICYCLE FRIENDLY." MY GIFT IS \$_____ (100% TAX DEDUCTIBLE)

TOTAL ENCLOSED = _____

TICKETS WILL NOT BE MAILED—ALL TICKETS WILL BE HELD AT THE DOOR.

NAME _____

ADDRESS _____

CITY _____ STATE _____ ZIP _____

HOME PHONE (____) _____ WORK PHONE (____) _____

VISA/MC # _____ EXP DATE _____

SIGNATURE _____

PLEASE RETURN THIS FORM AND PAYMENT TO

BICYCLE TRANSPORTATION ALLIANCE
PO BOX 9072
PORTLAND, OR 97207
PHONE 503.226.0676 / FAX 503.226.0498
E-MAIL: INFO@BTA4BIKES.ORG