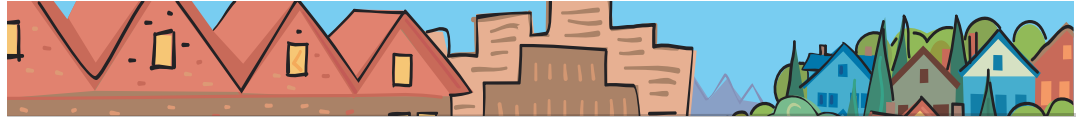


Rod Park

METRO COUNCIL DISTRICT 1 NEWS



METRO

PEOPLE PLACES
OPEN SPACES

Rod Park represents District 1, which includes Fairview, Gresham, Happy Valley, Maywood Park, Troutdale, Wood Village, Damascus and portions of East Portland.



A message from Rod Park

The Metro Council passed legislation providing disabled veterans with free admission and camping at Metro Regional Parks including Blue Lake Park, Oxbow Park, Chinook Landing, and M. James Gleason Boat Ramp. In the past, disabled veterans were offered a discounted admission fee to Metro Regional Parks. This change provides U.S. Veterans with service-connected disabilities with free admission and camping at Metro Regional Parks, using the same identification as the State's Special Access Pass for Veterans with Disabilities & Active Military On Leave program. This policy will

go into effect the first of the year.

I would like to thank Ken Piper, a veteran and resident of District 1 for bringing this to my attention. As a result of my conversation with him, I worked with the Metro Council to pass this legislation. The Council realizes how important it is to honor the dedication and service veterans have demonstrated. With the State of Oregon already providing free admission we realized it's only right to extend these same benefits to allow our disabled veterans free access to Metro Regional Parks.

On another note I would like to offer my congratulations to The Crossings at Gresham Station and our Transit Oriented Development staff for receiving the 2007 Annual Design Excellence winner for Transit-Oriented Design. You can read more about the award in the story below.

Have a safe and festive holiday season.

— Rod Park

Carlotta Collette appointed to Metro Council

The Metro Council unanimously voted to appoint Carlotta Collette as Councilor for District 2 at its Nov. 6th meeting. Collette replaces Brian Newman who resigned in October. Eleven residents of District 2 applied for the open position.

Following the vote, Collette formally resigned her position on the Milwaukie City Council to which she was elected in 2004. She was also appointed in 2005 and elected in 2006 to the Clackamas Community College Board of Education, of which she currently serves as vice-chair. Collette has managed her own communications

consulting business and worked for 14 years on the staff of the Northwest Power Planning Council.

District 2 covers most of urban Clackamas County, including the cities of Gladstone, Johnson City, Lake Oswego, Milwaukie, Oregon City, Rivergrove and West Linn. It also includes a portion of Southwest Portland in Multnomah County.

Collette's appointment will run through Jan. 5, 2009.

Restoration and enhancement grants open for pre-application

Metro's Nature in Neighborhoods program is now accepting pre-applications for restoration and enhancement grants to protect fish and wildlife throughout the region. A total \$250,000 is available.

The grants are open to a variety of groups. Projects must be within the metro region and applicants must match their request with outside funding, in-kind services or volunteer hours.

Pre-applications are due Jan. 16. After a panel of reviewers evaluates the submissions, selected pre-applicants will submit a final application due in March. Projects to receive funding will be announced in May.

Free grant writing workshops are being offered for new grant-writers and interested individuals. To reserve a spot at an upcoming session, call Janelle Geddes at 503-797-1550 or email geddesj@metro.dst.or.us.

For more information, visit the Metro website at www.metro-region.org/nature.

Metro-supported projects receive awards

Two of Metro's projects recently received recognition.

Multi-Housing, a national publication focusing on news and analysis of events related to the multi-housing industry, chose The Crossings at Gresham Station as the 2007 Annual Design Excellence winner for Transit-Oriented Design. The Crossings combines retail, residential and office activities to create a high-density and mixed-use community. Located near the Gresham Civic Station light rail station, the development encourages the use of transit and promotes urban living.

The Oregon Downtown Development Association selected Milwaukie's North Main Village as the 2007 Pioneering Award winner in its Physical Improvements category. The project, supported by Metro's Centers program, features a rain garden and landscape features to manage storm water.

Metro Council invests in revolving fund for housing

In response to the region's growing need for moderately priced housing, the Metro Council voted to invest \$1 million in seed money to create a permanent regional resource for affordable housing. The Regional Housing Choice Revolving Fund (RHCRF) would provide the incentive for a variety of public, private and charitable partners to invest in a \$10-\$20 million partnership to help protect affordable housing in the region.

Metro's contribution is contingent upon the fund having at least \$10 million in capital, Metro representation on the governing board, and Council confidence that the funds will satisfy professional standards. Council has set aside a period of two years during which these conditions must be met.

The funds could extend low-interest loans to jump-start the development and preservation of affordable housing in the Metro area.

The Housing Choice Fund would help implement Metro's 2040 Growth Concept by promoting mixed-use, mixed-income patterns of development in regional centers, town centers and transit corridors. In keeping with the Concept, the RHCRF would also promote best practices in green and sustainable design. It is the Metro Council's hope that this proposed fund will be a powerful tool to help realize region-wide goals of protecting and increasing the affordable housing stock.

About Metro

Clean air and clean water do not stop at city limits or county lines. Neither does the need for jobs, a thriving economy and good transportation choices for people and businesses in our region. Voters have asked Metro to help with the challenges that cross those lines and affect the 25 cities and three counties in the Portland metropolitan area.

A regional approach simply makes sense when it comes to protecting open space, caring for parks, planning for the best use of land, managing garbage disposal and increasing recycling. Metro oversees world-class facilities such as the Oregon Zoo, which contributes to conservation and education, and the Oregon Convention Center, which benefits the region's economy.

Your Metro representatives

Metro Council President
David Bragdon

Metro Councilors
Rod Park, District 1
Carlotta Collette, District 2
Carl Hosticka, District 3
Kathryn Harrington, District 4
Rex Burkholder, District 5
Robert Liberty, District 6

Auditor
Suzanne Flynn

Councilor Rod Park contact information

Address	600 NE Grand Ave. Portland, OR 97232
Phone	(503) 797-1547
Fax	(503) 797-1793
E-Mail	parkr@metro.dst.or.us
Assistant	Kathryn Sofich
Phone	(503) 797-1941
E-Mail	sofichk@metro.dst.or.us
Web	www.metro-region.org

December 2007 eka/final
Printed on recycled paper