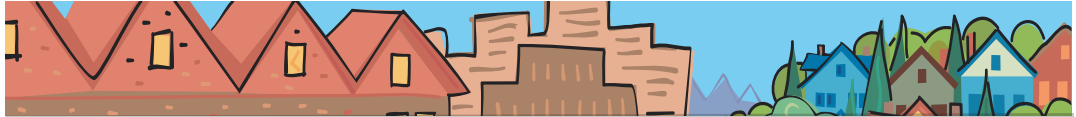


# Metro District 2

## METRO COUNCIL DISTRICT 2 NEWS



**METRO**

PEOPLE PLACES  
OPEN SPACES

**Metro Council  
District 2 includes the  
cities of Gladstone,  
Johnson City, Lake  
Oswego, Milwaukie,  
Oregon City,  
Rivergrove and West  
Linn and a portion of  
Southwest Portland.**

### **Lake Oswego to Portland Transit Alternative Study moves forward**

The Lake Oswego to Portland corridor went under review on Dec. 13 by the Metro Council, when it approved advancing further study of an environmental impact statement for various transportation options. Enhanced bus services and streetcar implementation, as well as a bicycle and pedestrian trail, work tasks related to refining streetcar alignments, and steps in securing funding for the environmental impact statement are all included.

The environmental analysis will be led by Metro beginning in late 2008, to conclude in 2010 with the selection of a single preferred alternative to be advanced into Preliminary Engineering and a Final Environmental Impact Statement.

As part of starting the environmental impact statement, Metro will schedule a scoping meeting this spring to inform interested parties about the plan to prepare a Draft Environmental Impact Statement, provide information on the nature of the proposed transit project and invite public participation in the process, including comments on the proposed options.

For more information, visit Metro's web site at [www.metro-region.org](http://www.metro-region.org) and search for "Lake Oswego to Portland."

### **Metro Council approves Request for Proposals for 10-year waste transport contract**

The Metro Council has approved issuing a Request for Proposals (RFP) for transporting waste from the metropolitan region 150 miles east to the Columbia Ridge landfill in Gilliam County, Oregon. Proposals for the 10-year contract, which are due March 12, will be reviewed by an interagency evaluation team.

Proposals may include a variety of transportation modes – truck, rail, barge or a combination of modes. The criteria by which proposals will be evaluated include cost, environmental impacts, socioeconomic impacts and operational considerations/reduction of risk.

The RFP and evaluation criteria incorporated results from a transportation study of possible modes and from suggestions made by the public, government officials, community groups and transportation industry representatives.

Despite a regional recovery rate of 56 percent in the Metro area, the region still disposes of 1.2 million tons of waste per year. The new contract will provide for as much as 700,000 tons per year to be sent to the Columbia Ridge landfill. The current contract to haul the waste expires on Dec. 31, 2009. The new contract will begin Jan. 1, 2010.

## Metro councilors help "Fork it Over!"

In a state rich in natural resources, the dichotomy of rising hunger rates among individuals and families and increased waste entering our regional transfer stations seems improbable. However, of all trash deposited in the Metro region each year, 180,000 tons (approximately 14 percent of total trash) is usable food.

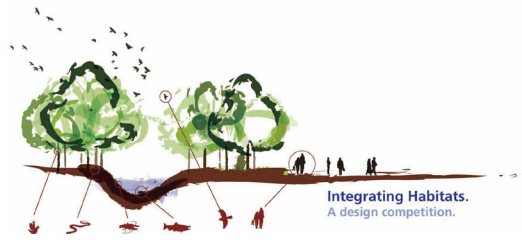
Identifying the discrepancy between number of hungry people and the amount of usable food wasted in the Metro region each year, Metro's "Fork It Over!" program, the Oregon Food Bank (OFB), and its Fresh Alliance program have developed strategies to alleviate regional hunger.

OFB dedicates itself to fighting hunger throughout Oregon and southwest Washington. Fork it Over! is Metro's umbrella food donation program to reduce hunger and waste in the Portland metropolitan area by working with businesses and individuals to collect food before it hits the trash can. Fresh Alliance is an OFB program that works with grocery chains to recover meat and dairy products that otherwise would be thrown away.

Since 1996, Metro has disbursed approximately \$700,000 in grants to the OFB and the Fresh Alliance program. The grants have supplied freezer and refrigerated trucks, other vehicles, and carts to store food materials, among other resources involved in the food reuse packaging and transport process.

Metro Councilors and senior staff were able to see firsthand how these grants helped achieve both the mission of Metro's Fork it Over! program and the OFB's goal of eliminating food insecurity. On Jan. 3, Councilors and staff volunteered at the OFB, where they sorted and repackaged more than 4,400 pounds of frozen meat for distribution to food reuse agencies throughout the region and state.

For more information about Metro's Fork it Over! program, visit [www.forkitover.org](http://www.forkitover.org) or call 503-797-1647.



## Integrating Habitats design competition awards Feb. 26

In February, a group of prestigious professionals in the architecture and design industries will gather to judge an innovative competition focusing on maintaining or enhancing our region's exceptional natural landscape. Metro's Nature in Neighborhoods program launched "Integrating Habitats. A Design Competition." as a way to develop innovative, visionary building designs that keep nature in mind.

The competition called for proposals that combine design excellence, ecological stewardship and economic enterprise. To date, approximately 100 submissions from around the world have been received. Contributors include multidisciplinary design professionals and students.

Winners will be announced at an award event on Tuesday, Feb. 26 from 6 to 8:30 p.m. at the Portland Art Museum, 1219 SW Park, Portland. The event, which is open to the public, will also serve as the kick-off for the People's Choice category, an online voting system open to the public.

For more information, visit [www.metro-region.org/integratinghabitats](http://www.metro-region.org/integratinghabitats), call 503-797-1764 or e-mail [harlanc@metro.dst.or.us](mailto:harlanc@metro.dst.or.us).

### Metro Council office contact information

Address 600 NE Grand Ave.  
Portland, OR 97232  
Phone 503-797-1887  
Fax 503-797-1793  
E-mail [collettec@metro.dst.or.us](mailto:collettec@metro.dst.or.us)  
Assistant Ina Zucker  
Phone 503-797-1543  
E-mail [zuckeri@metro.dst.or.us](mailto:zuckeri@metro.dst.or.us)  
Web [www.metro-region.org](http://www.metro-region.org)

## About Metro

Clean air and clean water do not stop at city limits or county lines. Neither does the need for jobs, a thriving economy and good transportation choices for people and businesses in our region. Voters have asked Metro to help with the challenges that cross those lines and affect the 25 cities and three counties in the Portland metropolitan area.

A regional approach simply makes sense when it comes to protecting open space, caring for parks, planning for the best use of land, managing garbage disposal and increasing recycling. Metro oversees world-class facilities such as the Oregon Zoo, which contributes to conservation and education, and the Oregon Convention Center, which benefits the region's economy.

### Your Metro representatives

Metro Council President  
David Bragdon

Metro Councilors  
Rod Park, District 1  
Carlotta Collette, District 2  
Carl Hosticka, District 3  
Kathryn Harrington, District 4  
Rex Burkholder, District 5  
Robert Liberty, District 6

Auditor  
Suzanne Flynn

February 2008 eka/v2  
Printed on recycled paper