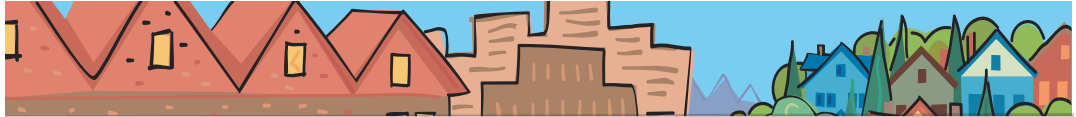


Rod Park

METRO COUNCIL DISTRICT 1 NEWS



METRO

PEOPLE PLACES
OPEN SPACES

Rod Park represents District 1, which includes Fairview, Gresham, Happy Valley, Maywood Park, Troutdale, Wood Village, Damascus and portions of East Portland.



The opportunities of Spring

Spring is here and so are opportunities to enjoy the abundance of the region's riches.

Shortly, across the region fresh, locally grown food and plants will be available in abundance at farmers' markets. You can benefit yourself and family by buying healthy, locally grown food, while at the same time supporting your neighboring farmers. You'll also help with reduced fuel usage, since locally grown food requires only 1/27 as many transportation inputs as imported food does. For more

information and a list of Oregon Farmer's Markets visit www.oregonfarmersmarkets.org.

Farmers Markets in District 1 and the region:

Boring Farmer's Market

9 a.m. to 2 p.m. Sundays, June to early September
Special Mothers Day Market, 10 a.m. to 3 p.m. Sunday, May 11
Boring Station Trailhead Park, Highway 212 and Southeast Wally Road
boringfm@gmail.com • www.boringfarmersmarket.com

Clackamas Sunnyside Grange Farmers' & Artists' Market

11:30 a.m. to 3:30 p.m. Sundays, April to October
13100 SE Sunnyside Rd at 132nd Avenue
windancefarms@comcast.net • www.windancefarmsandart.com

Fairview Farmers' & Artist Market

4 to 8 p.m. Thursdays, April to October
Fairview City Hall, 1300 NE Village St.
windancefarms@comcast.net • www.windancefarmsandart.com

Gresham Farmers Market

8:30 a.m. to 2 p.m. Saturdays, May to October
Northwest Miller Avenue between Second and Third streets
gfmmanager@yahoo.com • www.greshamfarmersmarket.com

Parkrose Farmers Market

8 a.m. to 2 p.m. Saturdays, May to October
Northeast 122nd Avenue and Shaver Street
steve_voorhees@q.com • www.parkrosefarmersmarket.org

Portland Farmers Market

10 a.m. to 2 p.m. Wednesdays, May to October
Southwest Salmon Street and Park Avenue
jaret@portlandfarmersmarket.org • www.portlandfarmersmarket.org

Troutdale Farmers' and Artists' Market

10 a.m. to 3 p.m. Saturdays, April to October
551 E. Columbia River Highway
windancefarms@comcast.net • www.windancefarmsandart.com

continued

The Zoo is also a great place to visit this time of year. The animals are a lot more active in the spring as they shake off the winter doldrums.

— Rod Park

The Metro Council adopts sustainability resolution

As Oregonians, we take great pride in the beauty of our environment and the health of our region. We have been at the forefront of innovative ideas to preserve and enhance our quality of life both now and for future generations, long before the word “sustainability” entered our everyday vocabulary. That term has gained momentum as an increased awareness of the effects of global warming, green house gases and increased resource consumption have become more apparent.

The Metro Council has always taken a leadership role in fostering a region-wide approach to policies that integrate sustainable practices and goals, from transportation and land-use planning to recycling and waste reduction programs. In order to strengthen Metro’s commitment to a consistent, collaborative approach to sustainability, the Council recently passed a resolution that formally adopted the State of Oregon’s definition of sustainability to direct Metro’s internal operations, planning efforts and role as a regional convener:

“‘Sustainability’ means using, developing and protecting resources in a manner that enables people to meet current needs and provides that future generations can also meet future needs, from the joint perspective of environmental, economic and community objectives.”

The adoption of this sustainability resolution allows Metro to continue to develop a comprehensive practice of evaluating all programs and planning efforts through the sustainability lens. It also strengthens Metro’s role as a convener in sustainability discussions and a leader in the regional coordination of sustainable policies and planning. The Metro Council has made it a priority to engage in sustainable practices and the passage of this resolution ensures that Metro will continue to find sustainable ways to serve the region.

Headquarters hotel update

With potential to catalyze significant economic development and generate thousands of jobs, the proposed headquarters hotel is a rare and timely opportunity for the region to build upon the convention business, which is a significant economic driver. Since December 2007, Metro has collaborated with regional partners to assess the feasibility of the project and identify avenues to maximize the benefits for citizens.

In order to determine if Metro should proceed with the headquarters hotel project, it was necessary to hire a development team to determine accurate cost estimates of construction and operations. That development team has been busy planning a building that could stand as an icon to the Portland Regional Experience, emphasizing both sustainability and innovation. Exploratory designs include a living green roof and a large public square adjoining the hotel’s lobby and oriented towards the Oregon Convention Center.

In addition, Councilors Rod Park and Rex Burkholder have been exploring opportunities to expand programs that include economically disadvantaged residents and local emerging businesses to maximize Metro’s ability to promote equity and positively impact the region through hiring and purchasing policies.

The Metro Council hopes that with our partner organizations, a decision will be made by the end of summer on whether the headquarters hotel project will become a reality.

Councilor Rod Park contact information

Address 600 NE Grand Ave.
Portland, OR 97232
Phone 503-797-1547
Fax 503-797-1793
E-Mail parkr@metro.dst.or.us
Assistant Kathryn Sofich
Phone 503-797-1941
E-Mail sofichk@metro.dst.or.us
Web www.metro-region.org

About Metro

Clean air and clean water do not stop at city limits or county lines. Neither does the need for jobs, a thriving economy and good transportation choices for people and businesses in our region. Voters have asked Metro to help with the challenges that cross those lines and affect the 25 cities and three counties in the Portland metropolitan area.

A regional approach simply makes sense when it comes to protecting open space, caring for parks, planning for the best use of land, managing garbage disposal and increasing recycling. Metro oversees world-class facilities such as the Oregon Zoo, which contributes to conservation and education, and the Oregon Convention Center, which benefits the region’s economy.

Your Metro representatives

Metro Council President
David Bragdon

Metro Councilors
Rod Park, District 1
Carlotta Collette, District 2
Carl Hosticka, District 3
Kathryn Harrington, District 4
Rex Burkholder, District 5
Robert Liberty, District 6

Auditor
Suzanne Flynn