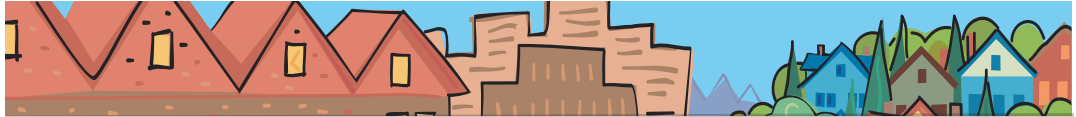


Metro District 6

METRO COUNCIL DISTRICT 6 NEWS



METRO

PEOPLE PLACES
OPEN SPACES

Metro Council

**District 6 includes
portions of
Northeast, Southeast
and Southwest
Portland.**

The Metro Council adopts sustainability resolution

As Oregonians, we take great pride in the beauty of our environment and the health of our region. We have been at the forefront of innovative ideas to preserve and enhance our quality of life both now and for future generations, long before the word “sustainability” entered our everyday vocabulary. That term has gained momentum as an increased awareness of the effects of global warming, green house gases and increased resource consumption have become more apparent.

The Metro Council has always taken a leadership role in fostering a region-wide approach to policies that integrate sustainable practices and goals, from transportation and land-use planning to recycling and waste reduction programs. In order to strengthen Metro’s commitment to a consistent, collaborative approach to sustainability, the Council recently passed a resolution that formally adopted the State of Oregon’s definition of sustainability to direct Metro’s internal operations, planning efforts and role as a regional convener:

“‘Sustainability’ means using, developing and protecting resources in a manner that enables people to meet current needs and provides that future generations can also meet future needs, from the joint perspective of environmental, economic and community objectives.”

The adoption of this sustainability resolution allows Metro to continue to develop a comprehensive practice of evaluating all programs and planning efforts through the sustainability lens. It also strengthens Metro’s role as a convener in sustainability discussions and a leader in the regional coordination of sustainable policies and planning. The Metro Council has made it a priority to engage in sustainable practices and the passage of this resolution ensures that Metro will continue to find sustainable ways to serve the region.

Portland-Milwaukie Light Rail Project open houses in May

The Portland-Milwaukie Light Rail Project’s 45-day public comment period is fast approaching and Metro is looking for your input. The public comment period will begin after the publication of the Supplemental Draft Environmental Impact Statement.

This month, the project team will host three open houses to share information about the costs, impacts and benefits of the project’s alternatives. The open houses will give participants the opportunity to review information, ask questions, talk with project staff and offer comments. The project’s steering committee will hold a public hearing before the end of the public comment period.

The steering committee will consider public comments, a recommendation from the project’s citizen advisory committee, and technical findings as it develops a Locally Preferred Alternative for the project. Steering committee members include elected officials from Metro, the cities of Milwaukie, Portland and Oregon City, and Clackamas and Multnomah counties, and appointed officials from TriMet and the Oregon Department of Transportation.

continued

The six and one-half mile alignment between Milwaukie and Portland would provide additional transportation options for fast-growing communities in north Clackamas County and Southeast Portland. The line would connect an estimated 20,000 daily riders to the existing MAX system, creating access to central eastside, South Waterfront, downtown Portland, Hillsboro, Gresham and the Portland airport.

For more information on the project and a schedule for the upcoming open houses, visit www.metro-region.org/southcorridor.

Celebrating Earth Day billboard artwork

On Saturday, April 5, the four winning and nine honorable-mention designs were revealed during a ceremony and art show at the Metro Regional Center. One winner from each grade-level category, K-2, 3-5, 6-8 and 9-12, was selected to have his or her artwork, name and the name of his or her teacher and school displayed on billboards posted throughout the metro region for Earth Day.

The four winners are:

- Zach Wright, grade 1, Harold Oliver Primary
- Elaine Wan, grade 5, St. Mary of the Valley School
- Kate Kobielsky, grade 7, Colton Middle School
- Matthew Humphrey, grade 11, Tigard High School

To see the winning and honorable mention designs, visit www.metro-region.org/schoolrecycling or watch for the billboards at different locations throughout the region from April to June 2008.

Hotline helps homeowners build green

The Portland metro region continues to make headlines around the world for innovation in the field of green building. As enthusiasm for sustainable building practices grows, more homeowners want to go green with their new construction and home improvement projects.

Inspired by the fast growing trend in green building, Metro, the City of Portland Office of Sustainable Development and

Clackamas, Washington and Multnomah counties are collaborating to increase access to information on green materials, comprehensive design and professional services.

The new Regional Green Building Hotline is a part of the Green Development Resource Center. The hotline provides information about green building strategies and resources, as well as financial incentives for new and existing commercial and residential projects.

The hotline is equipped to address your questions, large or small. Call with how-to questions or for guidance on the process of green building from start to finish.

Residents, non-profits, businesses, developers, builders, contractors and government agencies are welcome to call and ask staff about material procurement, remodeling and product certification, sustainable site planning, green contractors, design or salvaged and recycled materials.

The Green Development Resource Center also plans to offer a library, a mobile workshop and an expanded website with solutions and strategies to help inform current practitioners and inspire those who have ever contemplated green building.

The hotline is open to calls Monday through Friday during regular business hours. Call 503-823-5431 to speak with the green building specialist or submit a question by sending e-mail anytime via the Green Development Resource Center web site at www.buildgreen411.com.

About Metro

Clean air and clean water do not stop at city limits or county lines. Neither does the need for jobs, a thriving economy and good transportation choices for people and businesses in our region. Voters have asked Metro to help with the challenges that cross those lines and affect the 25 cities and three counties in the Portland metropolitan area.

A regional approach simply makes sense when it comes to protecting open space, caring for parks, planning for the best use of land, managing garbage disposal and increasing recycling. Metro oversees world-class facilities such as the Oregon Zoo, which contributes to conservation and education, and the Oregon Convention Center, which benefits the region's economy.

Your Metro representatives

Metro Council President
David Bragdon

Metro Councilors
Rod Park, District 1
Carlotta Collette, District 2
Carl Hosticka, District 3
Kathryn Harrington, District 4
Rex Burkholder, District 5
Robert Liberty, District 6

Auditor
Suzanne Flynn

Metro Council office contact information

Address	600 NE Grand Ave. Portland, OR 97232
Phone	503-797-1552
Fax	503-797-1793
E-mail	libertyr@metro.dst.or.us
Assistant	Ina Zucker
Phone	503-797-1543
E-mail	zuckeri@metro.dst.or.us
Web	www.metro-region.org

cth / v.2

Printed on recycled paper