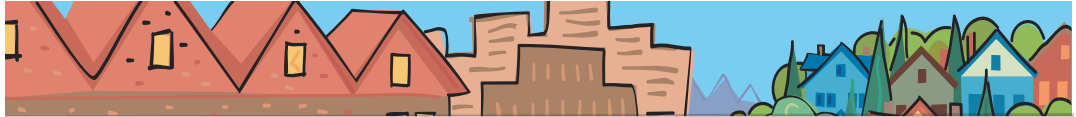


Rex Burkholder

METRO COUNCIL DISTRICT 5 NEWS



METRO

PEOPLE PLACES
OPEN SPACES

**Rex Burkholder
represents District
5, which includes
Northwest Portland,
North Portland,
Northeast Portland,
downtown Portland,
a portion of
Southwest Portland
and a portion of
Southeast Portland.**



A message from Rex Burkholder

Summer is here and it arrived with a bang!

Wasn't it just a couple of days ago we were heard complaining about the rain and the cold? I rode out to the Gresham Farmers' Market on Saturday, June 28 to check out the Drive Less Save More booth and it was 87 degrees by 9 a.m.! It was a great ride out the Springwater Corridor with lots of other people enjoying the day. Along the way I checked out the stream restoration projects along Johnson Creek and Beggars Tick Marsh Natural Area. I remembered the rainy day in

February, pulling out invasive species and planting cedars and ferns in the Gresham Woods with the Gresham Kiwanis Club and lots of Cub Scouts. After a well-earned chocolate milkshake with my fellow Councilor, Rod Park, I rode north on the Gresham Fairview Trail, through Blue Lake Park and along Marine Drive Bikeway. All part of the 40-mile Loop. The only hard part was when the morning's east wind decided to become westerly. Great for the sailboats on the Columbia but tough to bike into!

Speaking of the broad, blue Columbia River – on June 24th, the Columbia River Crossing Task Force made its recommendation to the departments of transportation of Washington and Oregon. After three years of study and deliberation, the 39-member task force approved a Locally Preferred Alternative that includes a new bridge to replace the existing, aging bridges and light rail extended to Vancouver. The task force recommended a long list of issues needing more analysis including the total number of lanes on the new bridge, establishing a “community enhancement” fund, and the design of the bridge including how to make cycling, walking and use of low speed vehicles (like electric cars) attractive and safe.

The other big issue is how to pay for the work. Like other large bridges, tolls will be necessary and, done right, can actually help reduce congestion by encouraging people to carpool, use transit and reschedule trips. The next step is to actually design the project and answer all the outstanding questions. This will take about one year, so keep tuned!

This is very big step but one that I feel is the right action at the right time. You can find the Task Force's full recommendation at www.columbiarivercrossing.org.

Summer has just begun and I look forward to taking advantage of upcoming events around the region. Here are a few of my picks:

Music on Main Street: Portland Center for the Performing Arts presents Music on Main Street. This vibrant outdoor concert series features local bands that play in the heart of Portland's cultural district free. This summer series runs through August at Portland Center for the Performing Arts, 1111 SW Broadway Portland, 5 to 7 p.m. Wednesdays. Free of charge.

Oregon Zoo Summer Concerts: A range of music choices are offered in this concert series. Remember, Wednesday night concerts are the price of Zoo admission.

continued

Summer GreenScene: Metro's GreenScene features nature notes about local plants and animals, tips for sustainable living, stories about outstanding people and places, and news from the front lines of the regionwide effort to protect water quality, fish and wildlife habitat and access to nature for future generations. In addition, GreenScene provides a comprehensive calendar of nature activities, gardening workshops and volunteer ventures offered by Metro and more than 100 other organizations. Events include the Blue Lake 4th of July celebration, work parties at Tualatin Hills Nature Park and campfire programs at Oxbow Park.

Have a great summer.

— Rex Burkholder

Metro Council awards \$60,000 in grants to benefit residents, make improvements

The Metro Council has announced \$60,000 in new grants that will result in first aid, CPR and conflict resolution training as well as summer jobs for teens. Additionally, the grants will provide opportunities for safe and accessible home repairs for low-income seniors and the disabled, and educational paddle trips for area youth to learn and explore the Willamette River, among other programs and opportunities.

Funds for Metro's grants were generated from a 50-cent surcharge collected on each ton of garbage brought to the now-closed St. Johns landfill. Today, interest generated on the fund supports the grant program.

The 2008-09 grant cycle marks the 21st year Metro has invested funds in the community through the program. In that time, more than \$2.1 million has been awarded to help fund 441 neighborhood improvement projects. Metro partners with local nonprofit organizations, schools, community groups and others in closely linked goals.

To see the complete slate of 2008-09 grant awards in North Portland, visit Metro's web site (www.oregonmetro.gov/grants).

For more information about Metro's community enhancement projects receiving funds this year, or to be added to the program notification list, visit Metro's web site at www.oregonmetro.gov/grants or call Karen Blauer at 503-797-1506.

Stop illegal dumping in your neighborhood – Call Metro's RID Patrol

Did you know that Metro cleans up more than 1,500 illegal dumpsites throughout the region each year? Illegal dumping of household garbage, old tires, hazardous waste and other refuse threatens human



health, wildlife and the environment. Metro's Report Illegal Dumping (RID) Patrol partners with local government agencies, law enforcement and community members to ensure that illegal dumpsites on public land are quickly cleaned up and investigated.

RID Patrol operates two trucks, staffed by correctional officers and inmate cleanup crews, to pick up garbage dumped on public lands. Investigating officers will try to locate the owner of the trash and track down the illegal hauler. Depending on the situation, the owners of the trash may be fined or cited along with the hauler who dumped illegally.

Fines are issued to cover the cost of cleaning up and properly managing waste from dumpsites.

Metro's RID Patrol can provide tools to prevent illegal dumping and help keep your neighborhood clean and green. For more information, call Metro Recycling at 503-234-3000, send e-mail to ridpatrol@oregonmetro.gov or visit www.oregonmetro.gov/ridpatrol. In un-incorporated Washington County, please call 503-846-8609. If you would like more information about how the RID Patrol can work with your community organization to prevent illegal dumping, call Tiffany Gates at 503-797-1867.

Counties, Metro ask residents to help shape region for next half century

To build a foundation for responsible growth over the next 40-50 years, Clackamas, Multnomah and Washington counties and Metro are collaborating to protect valuable agricultural and natural areas and enable great communities to develop by designating reserves – areas that may or may not be used for urban growth in the next 40 to 50 years.

A Regional Reserves Steering Committee represents stakeholders from throughout the region and also includes one commissioner from each of the three counties and one Metro councilor. It will assess which areas are most suitable for future urban development

continued

plus areas where natural features and working farms and forests should be preserved. The result will be the designation of urban and rural reserves.

The committee approved an initial broad study area – approximately five miles outside the current Metro urban growth boundary – for considering areas to be designated as reserves. At open houses throughout June and July, residents can learn more about the project and the reserves designation process, weigh in on whether the study areas are appropriate and share their values and ideas on the development of reserves.

The current open house schedule follows. Local elected officials and project representatives and staff from across the region will be available to discuss issues and answer questions. Additional events may be added.

5 to 8 p.m. Monday, July 7
Multnomah County East Building
600 NE Eighth St., Gresham

5 to 8 p.m. Thursday, July 10
Tualatin High School Commons
22300 SW Boones Ferry Road, Tualatin

9 a.m. to noon Saturday, July 12
Metro Regional Center Lobby
600 NE Grand Ave., Portland

5 to 8 p.m. Wednesday, July 16
Clackamas County Public Services Building,
rooms 369 A and B
2051 Kaen Road, Oregon City

The Metro Council continues to protect water quality and natural areas



Two important land acquisitions have been made using funds from Metro's 2006 voter-approved natural areas bond measure continuing the Metro Council's goal of protecting water quality, improving fish habitat and providing new recreation opportunities in the region. In May, Metro and Clackamas County partnered to protect 17 acres along the Clackamas River. Located on a stretch of the river known as Fisherman's Bend,

most of the site is within the 100-year floodplain. The property contains nearly ½-mile of river frontage, a perennial creek and a wetland system that could be improved to benefit threatened and endangered salmon species. Habitat restoration, including removal of common invasive weeds such as English ivy and blackberry, will be needed in order for the site to fulfill its potential and provide high-quality fish habitat. Metro purchased the land and immediately transferred ownership to Clackamas County, who will manage it for river access.

In June, Metro purchased 11 acres in Clatsop Butte, one of the largest remaining intact habitats in Portland. The property is directly adjacent to more than 100 acres acquired by Metro in the area since 2007. The property is primarily forested land crisscrossed by small tributary streams that drain to Johnson Creek. Older big-leaf maple, red alder and cedar trees are scattered throughout the site along with a healthy variety of native plants including Oregon grape, huckleberry and sword fern. Signs and sounds of wildlife such as deer, flicker, pileated woodpecker and other local and migratory birds are abundant throughout.

Both of these land acquisitions highlight the important work Metro is doing to protect the region's water quality, wildlife habitat and build a legacy of natural areas for future generations.

Lake Oswego to Portland Transit Project Comment Period



Metro anticipates beginning the next stage of study on the Lake Oswego to Portland corridor in 2009: a Draft Environmental Impact Statement (DEIS). The DEIS is a requirement of the National Environmental Policy Act. The effort will be led by Metro in cooperation with the cities of Lake Oswego and Portland, Clackamas and Multnomah counties, TriMet and the Oregon Department of Transportation. Work is expected to conclude in 2010 with the selection of a single preferred alternative to be advanced into Preliminary Engineering and a Final Environmental Impact Statement.

Metro's efforts reflect continuing discussion about ways to improve transit service between Lake Oswego and

continued

Portland. Alternatives to be studied in the DEIS include an extension of streetcar from South Waterfront on the Willamette Shoreline right of way, Macadam Avenue or parts of both, or enhanced bus service. The DEIS will also evaluate a no-build option.

A comment period is currently open to allow interested parties to comment on the proposed transit options and/or provide suggestions as to what will be studied in the DEIS. Comments will be accepted until Friday, July 18.

Send comments via e-mail to trans@oregonmetro.gov or mail comments to Lake Oswego to Portland transit project, Metro, 600 NE Grand Ave., Portland, OR 97232.

Metro and Gresham officials offer tours of newly protected natural area



Come visit Gabbert Hill, one of the new areas protected through Gresham and Metro's partnership. Until last year, this 37-acre natural area was one of only a few key, privately-owned parcels that interrupted Metro and the City of Gresham's ownership in the East Buttes. Its protection helps permanently secure a connected habitat corridor very critical for wildlife movement in our growing region.

Metro President David Bragdon, Metro Councilor Rod Park and Gresham Mayor Shane Bemis will co-host a short site visit to highlight the great partnership between the two agencies. Metro and Gresham staff will be on hand to answer questions. Community partners from Johnson Creek Watershed Council and The Audubon Society of Portland will offer their perspective about what the new land acquisition means to recovery efforts in the Johnson Creek watershed and the future of the region's wildlife.

6:30 to 7:30 p.m. Thursday, July 24
East Buttes natural area – Gresham
Suitable for adults and children 10 and older. Free. Advance registration required; call Carrie Belding at 503-797-1545 or send e-mail to carrie.belding@oregonmetro.gov.

Events of note in the district

For a complete list of events, check out our online calendar, www.oregonmetro.gov/calendar.

Tuesdays, July 1, 15, 29

7 to 9:30 p.m.

Twilight Tuesday

This relaxing walk at Smith and Bybee Wetlands Natural Area gives you the opportunity to learn the basic techniques of wildlife watching and identification. Registration required. Cost is \$10 per adult (in advance). For more information call, 503-797-1850 opt. 4.

Saturday, July 5

9 a.m. to noon

Arbor Lodge Park work party

Help replace the use of pesticides with people power by weeding and mulching at this North Portland park. Snacks, gloves and tools will be provided. Meet at North Bryant Street and Greeley Avenue at Arbor Lodge Park. For more information, call Megan at 503-423-7549.

Thursday, July 10

3:30 to 7:30 p.m.

Drive Less/Save More booth at Eastbank Farmers Market

Drop by the Drive Less/Save More booth at and spin the wheel to win a prize. Receive information about travel options in your area and learn about the many benefits of reducing single occupancy car trips. For more information, call Carrie or Gehron at 503-813-7574 or send e-mail to carrie.treadwell@oregonmetro.gov or gehron.burkholder@oregonmetro.gov.

Saturday, July 12

9 to 11:30 a.m.

Summer bird watching at Smith and Bybee Wetlands

Join James Davis and other Metro naturalists for some great birding as the nesting season winds down at Smith and Bybee Wetlands Natural Area. Cost is free. Registration required. For more information, call 503-797-1850 opt. 4.

Saturday, July 12

9:00am - 1:00 pm

Swan Island Greenway clean-up and beach party

Help gather trash and debris on Swan Island beaches, enjoy the newly landscaped Swan Island segment of the North Portland Willamette Greenway, tour the Swan Island Pump Station and maybe watch a barge launch or catch sight of a bald eagle. For more information, call Lenny at 503-745-6563.

continued

Saturday, July 12

9 a.m. to 1 p.m.

Winter vegetable gardening

Winter gardening means summer planting. Join Portland Community Gardens for a free winter gardening class at Rigler Community Garden. Registration required. For more information, call 503-823-1612.

Saturday, July 12

9 a.m. to 1 p.m.

Lone Fir historical tour



Enjoy the beauty and tranquility of Metro’s Lone Fir Pioneer Cemetery. The tour highlights Portland’s founders, early pioneers and nationally renowned figures as well as some beautiful and unusual monument art. Suggested donation of \$10. For more information, call 503-775-6278.

Saturday, July 12

10 a.m. to noon

Painted turtle walk

See these beautiful reptiles with the help of Metro naturalist James Davis, who will have small telescopes for a close look. Located at Smith and Bybee Wetlands Natural Area. Registration required. Call 503-797-1850 opt 4.

Sunday, July 13

10 a.m. to 4 p.m.

Gardens of Natural Delights tour

Peek into the beautiful back yards of chemical-free gardeners and learn their secrets to success. Open to Multnomah, Clackamas and Washington County residents only. Registration required. Free. Call 503-234-3000.

Sunday, July 13

noon to 4 p.m.

Mid-summer paddle at Smith & Bybee Wetlands

Bring your own kayak or canoe and personal flotation device and enjoy wildlife observation. Registration required. Contact Troy at 503-249-0482.

Saturday, July 19

5 p.m. to 8 p.m.

Midsummer night at Lone Fir

Watch Portland history come to life as you relax on a blanket, enjoying live music and performances that tell the stories of some of the more interesting individuals buried at Lone Fir Pioneer Cemetery. Suggested donation of \$10 or \$15 per family. Registration required. For more information, call 503-224-9200.

Sunday, July 27

9 a.m. to 1 p.m.

14th annual Columbia Slough Regatta

Join the largest one-day paddling event in Oregon at the Columbia Slough Watershed. Bring your own watercraft or make a reservation for a free canoe or kayak rental. Free. For more information, call Katie at 503-281-1132.

Sunday, July 27

1 to 5 p.m.

Marshmallows, meringue and s’mores from wild plants

Learn how to find, gather and process wild plants to prepare luxurious meringues, marshmallows and s’mores. Anyone with a sweet tooth will love this wild adventure. For more information, call 503-775-3828.

About Metro

Clean air and clean water do not stop at city limits or county lines. Neither does the need for jobs, a thriving economy and good transportation choices for people and businesses in our region. Voters have asked Metro to help with the challenges that cross those lines and affect the 25 cities and three counties in the Portland metropolitan area.

A regional approach simply makes sense when it comes to protecting open space, caring for parks, planning for the best use of land, managing garbage disposal and increasing recycling. Metro oversees world-class facilities such as the Oregon Zoo, which contributes to conservation and education, and the Oregon Convention Center, which benefits the region’s economy.

Your Metro representatives

Metro Council President
David Bragdon

Metro Councilors
Rod Park, District 1
Carlotta Collette, District 2
Carl Hosticka, District 3
Kathryn Harrington, District 4
Rex Burkholder, District 5
Robert Liberty, District 6

Auditor
Suzanne Flynn

Councilor Rex Burkholder contact information

600 NE Grand Ave.
Portland, OR 97232
503-797-1546 | 503-797-1793 fax
rex.burkholder@oregonmetro.gov

Kathryn Sofich, policy coordinator
503-797-1941
kathryn.sofich@oregonmetro.gov

www.oregonmetro.gov