



METRO

Agenda

MEETING: METRO COUNCIL GREATEST PLACE WORK SESSION
DATE: July 16, 2008
DAY: Wednesday
TIME: 2:00 PM
PLACE: Arlene Schnitzer Concert Hall - Stage

CALL TO ORDER AND ROLL CALL

Objectives:

- Final Council review of “Regional Choices Engagement Architecture” in preparation for public release
- Initial Council review of Region 2040 assessment products
- Council input on Urban and Rural Reserves work program issues
- Share final “Regional Infrastructure Analysis” report and Council direction on engagement strategy/next steps

2:00 PM I. Engagement/Communications Strategy

- Final Council review of engagement architecture in preparation for public release (attachment)
- Initial Council review of Region 2040 visual and metric assessment products (hand-outs)
- Upcoming events: Design code toolkit (second installment of “Financial Incentives Toolkit”) – Miranda Bateschell (event brief attached)

3:00 PM II. Urban and Rural Reserves – Councilor Harrington, John Williams

- Update on reserve open houses
- Council direction on reserve study areas (attachment)
- Council direction on reserves work program and Phase 3 analytical approach (attachment)
- Status of DLCD technical assistance grant request (attachment)

4:00 PM III. Regional Infrastructure Analysis – Malu Wilkinson

- Final review of Comparative Infrastructure Cost Case Studies (sent under separate cover) – Ted Reid, Todd Chase
- Infrastructure Advisory Committee presents final report (sent under separate cover)
- Council direction on engagement strategy/next steps (sent under separate cover)

August 20 Council Work Session Topics:

- Engagement/Communications Strategy: fall roll-out strategy to frame choices
- Updates on Urban and Rural Reserves, Regional Transportation Plan, Infrastructure, Employment and Economic Development, Centers and Corridors

ADJOURN

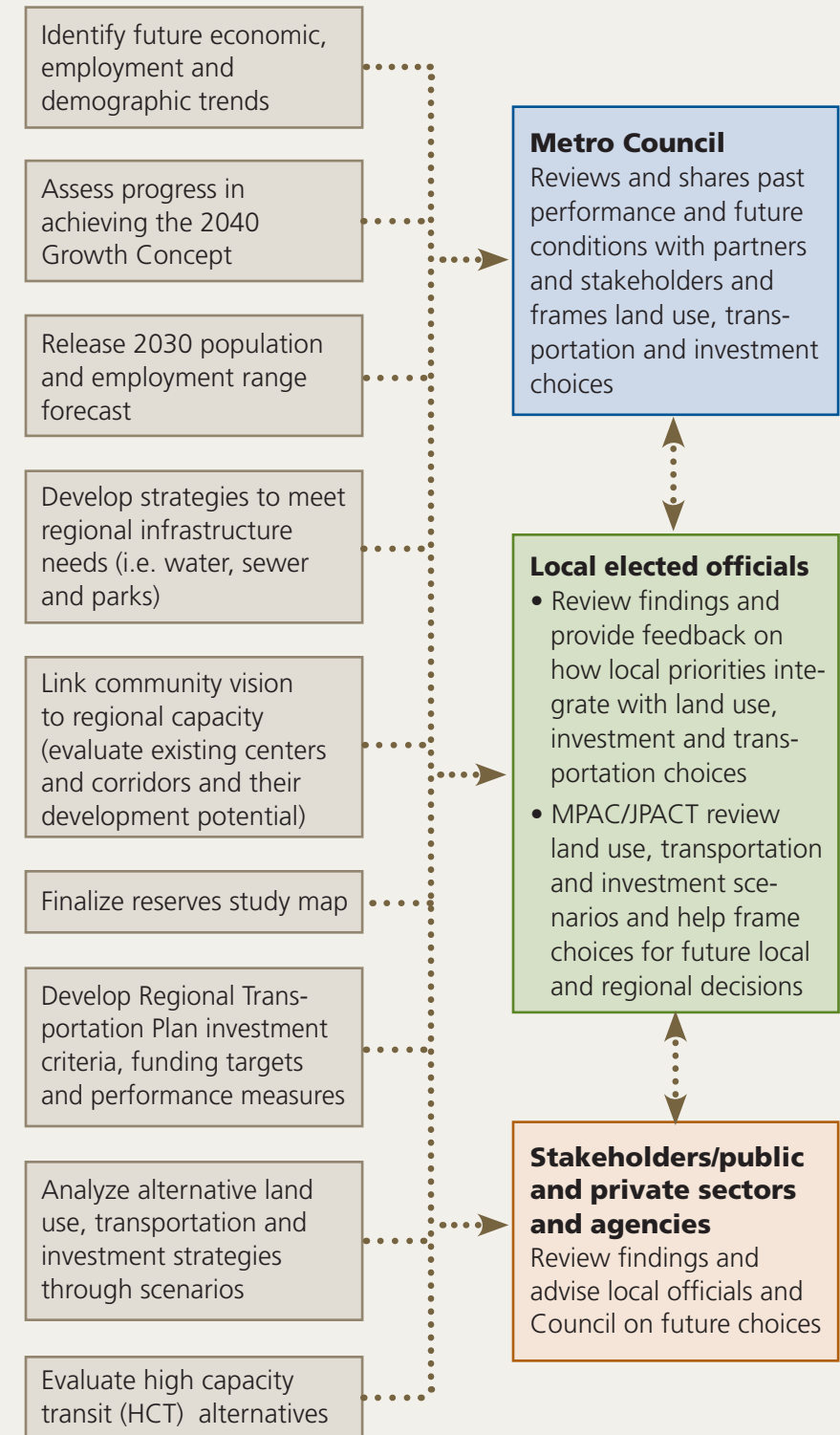
Regional Choices Engagement Architecture (2008 – 2011)



Phase 1: Frame Choices

Use scenarios and other tools to identify and illustrate trends

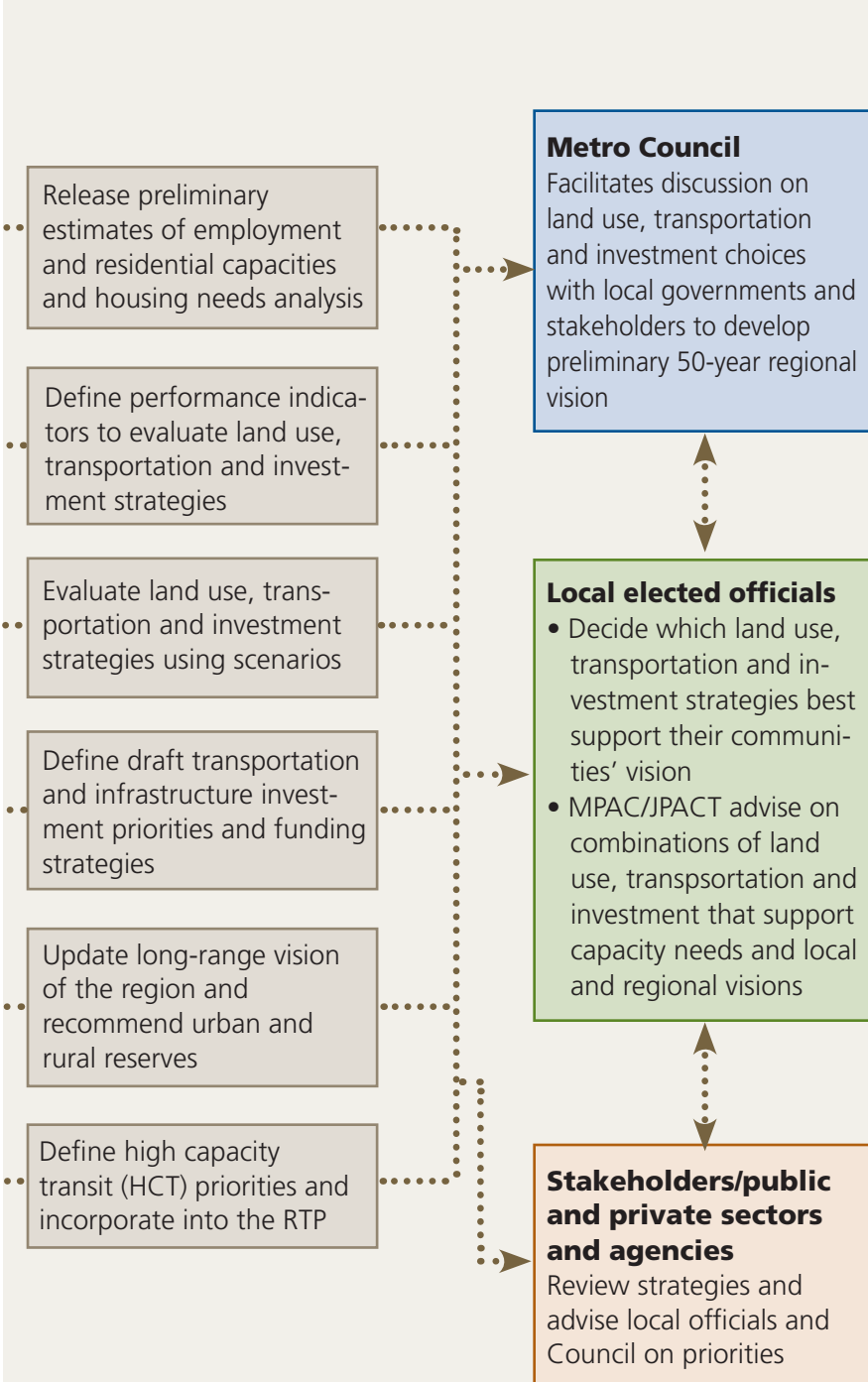
July 2008 – December 2008



Phase 2: Refine Choices

Debate strategies to achieve the region's long-range vision

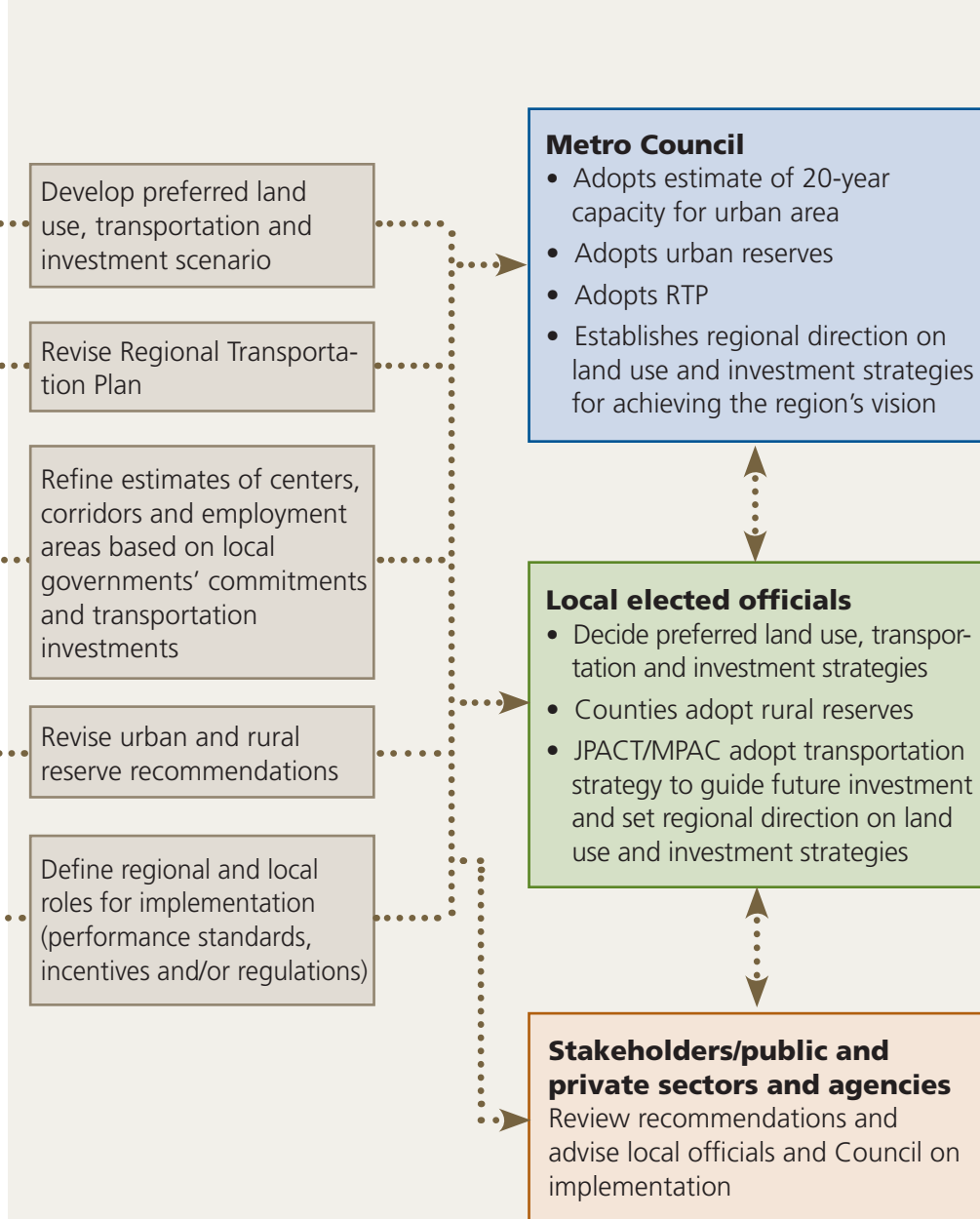
January 2009 – June 2009



Phase 3: Make Choices

Select recommended future vision and investment priorities

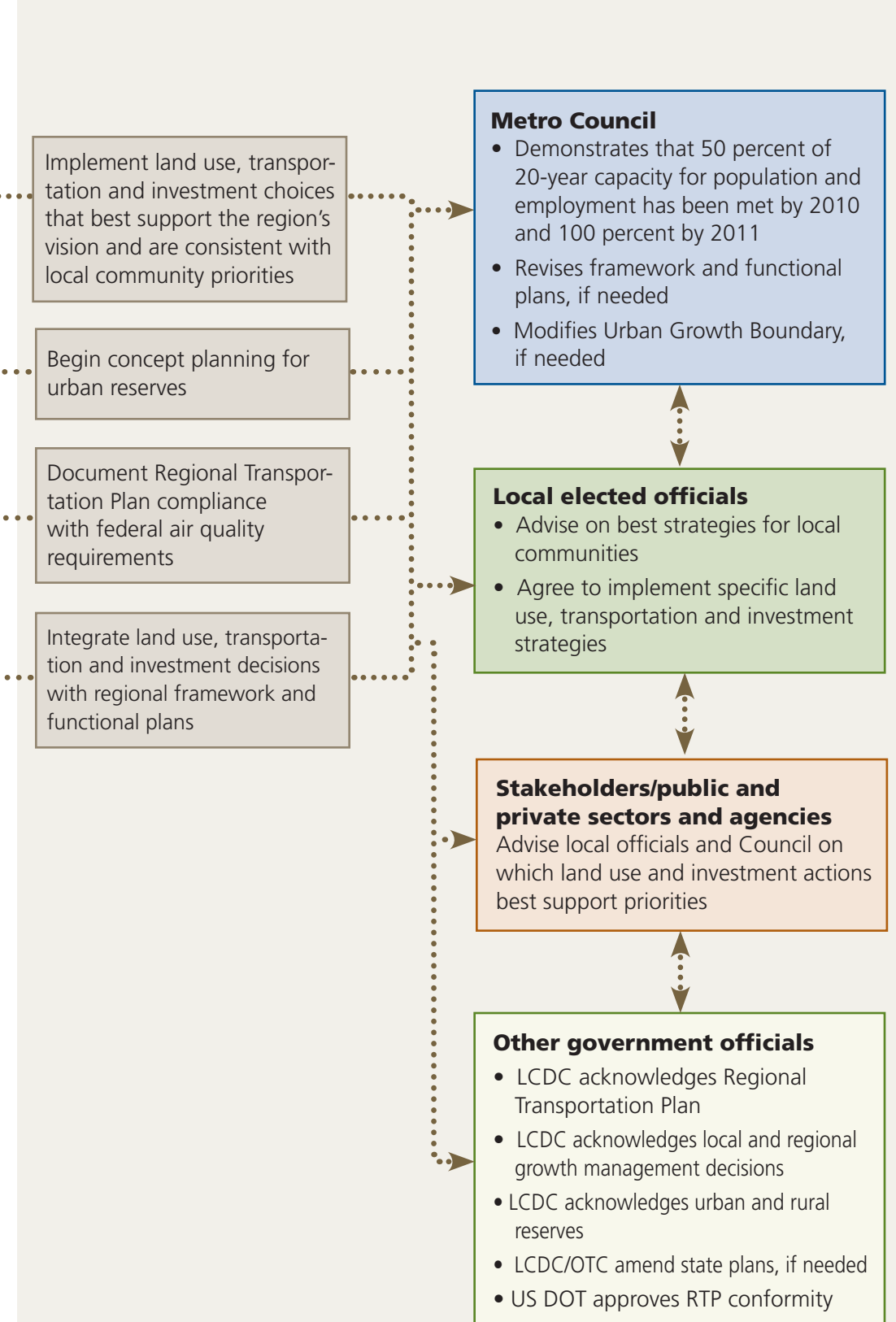
July 2009 – December 2009



Phase 4: Implement Choices

Implement integrated state, regional and local land use, transportation and investment strategies

2010 – 2011



Making the Greatest Place Workshop Series
Innovative Design and Development Toolkit Release
July 8, 2008

Event title: Promoting Vibrant Communities with Design/Code Toolkit Release

Date: July 30th, 2008

Time: 7:30 a.m. – 10:00 a.m.

Location: The Governor Hotel – 614 SW 11th Ave.

Event Positioning

As part of Metro's efforts to enable communities in the region to achieve efficient use of land, low-impact development, and vibrant communities, Metro is organizing a workshop to release the second in a series of toolkits. This event will mark the release of the Design/Code Toolkit, an informational guide of innovative design and development codes. The workshop will be used to engage, inspire, and involve a wide range of stakeholders and continue the efforts of the Making the Greatest Place Initiative. It also highlights the ongoing resources that Metro is providing to local governments.

Objectives

- To present and introduce the Design/Code Toolkit
- To highlight how communities in the Pacific Northwest and locally are using innovative design tools creatively to achieve their visions
- To highlight opportunities for implementing innovative approaches in the Metro region
- To educate developers on new approaches
- To inspire local governments to adopt new approaches
- To facilitate connections between developers and local governments officials
- To engage and inspire local governments to implement regional goals contained in the 2040 Growth Concept and to achieve higher levels of performance
- To increase Metro's role as regional problem solver by offering technical assistance in the form of the tool kit and follow on problem-solving workshops

Participants and primary audiences

Presenters: TBA

Participants and primary audiences

- Local elected officials
- Local planning directors and staff
- Developers
- Lenders
- Neighborhood Associations and other local stakeholders

Frame

- The rollout of the Innovative Design and Development Codes Toolkit is one of a series of technical workshops aimed to assist in achieving regional development goals at the local level.
- Metro will provide further tools and assistance through future workshops. These are currently envisioned to allow Metro staff to meet with local planners, planning commissions and others upon request to explain the tools more; help match up locals who have used the tools to those who have current problems; and bring additional technical assistance to bear to address design code barriers in a small workshop setting
- This event is a follow up on the successful workshop held in winter of 2008 that identified design and code issues that present barriers to development. The focus of this event is to offer a combination of tools to problem solve these issues.

Actions Desired

- Have regional planners begin to be aware and use the Design/Code Toolkit
- Inspire to reach Making the Greatest Place aspirations
- Highlight successful examples of design related solutions to urban issues in the Pacific Northwest to demonstrate how they might work locally
- Get local planners and others thinking about the types of problems they face and how more assistance could help

Promotion

- Save the date
- Invitations mailed to participants

Draft Event Outline

7:30 a.m. - 8:00 a.m.	Arrival. Pastries and Coffee served. (Toolkits to be picked up at entrance)
8:00 a.m. - 8:15 a.m.	Introduction and Welcome. Preview of Toolkit
8:15 a.m. – 9:35 a.m.	Four – Twenty Minute Presentations by invited speakers. Q and A.
9:35 a.m. – 10:00 a.m.	Closing, Thank you and reminder of fall workshop schedule, further available resources.

MEMORANDUM



DATE: May 30, 2008

TO: Councilor Kathryn Harrington, Metro
Commissioner Martha Schrader, Clackamas County
Commissioner Jeff Cogen, Multnomah County
Chair Tom Brian, Washington County
Reserve Steering Committee Members

FROM: Core Four Technical Team

RE: *Proposed Reserves Study Area Map*

Introduction

This memo provides a summary of the process by which the draft urban and rural reserves study area map has been developed and refined and seeks direction and consent from the Core Four and Reserves Steering Committee (RSC) to send the draft study area map out for public comment prior to its formal adoption by the Core Four at the September 10 RSC meeting.

Background

The Key Milestones for Designating Urban and Rural Reserves chart calls for the identification of a broad urban and rural reserve study area to take out for public input. At the April 9 RSC meeting, Metro staff outlined a proposal, developed with staff from Clackamas, Multnomah and Washington counties, for identifying a broad urban and rural reserve study area using a starting point of five-miles from the current urban growth boundary (UGB). This five-mile area included approximately 400,000 acres of land, or 2.5 times the amount of land within the current UGB. The area extended from Sandy in the east to Marion and Yamhill counties in the south, out to Hagg Lake in the west and most of Sauvie Island in the north (see attachment A). Staff also proposed adjustments to this five-mile study area as outlined below.

- Remove the study area from the Columbia River Gorge National Scenic Area
- Adjust the study area to exclude the Sandy urban reserve areas
- Extend the study area to include the area between the five-mile edge and Estacada and Molalla
- Remove the study area from Marion and Yamhill Counties
- Extend the study area to the Washington County line in the Chehalem ridge location
- Extend the study area to include the junctions of Highway 26 with Highway 6 and Highway 47 in the Banks area
- Extend the study area to include all of Sauvie Island in Multnomah County and the forested area extending from Forest Park to the Columbia and Washington county lines.

Also on April 9, the RSC discussed the proposed five-mile broad study area and amendments, generally agreeing with them with the exception of removing Marion and Yamhill counties from the study area. Furthermore, it was suggested that additional land to the south in Marion County should be included in the study area. The Core Four decided that they would contact commissioners from Marion and Yamhill counties to determine their willingness to be involved in the process. In addition, Metro staff would look into the legal issues involved in including these two counties in the reserves process.

At the May 14 RSC meeting, Dick Benner of the Office of Metro Attorney summarized three legal issues surrounding the extension of the study area into Yamhill and Marion counties. Although not mentioned in the discussion, the same legal issues relate to Columbia County.

- Metro cannot designate urban reserves in Yamhill, Marion and Columbia counties. The statute providing authority for Metro limits its potential jurisdiction to Clackamas, Multnomah and Washington counties and Metro cannot have a UGB that extends beyond the limits of that jurisdiction.
- Other counties can designate urban and rural reserves, however they would not be designating reserves under Senate Bill 1011 but under other statutes that allow them to do so.
- Metro could enter into an agreement with Yamhill, Marion and Columbia counties to designate reserves in those counties. The counties could designate rural reserves, however there is the limitation that their rural designation does not trump the UGB process under Goal 14.

On May 14, Commissioner Cogen reported that Core Four members have had conversations with their colleagues in Marion and Yamhill counties to inform them of the process and to let them know that their participation in the process was discussed by the RSC. Marion and Yamhill counties both declined to join the process, although they will track the progress of the RSC. Commissioner Cogen noted that the Core Four is determined to continue to communicate with the neighboring counties regarding the designation of urban and rural reserves. The RSC agreed that land beyond the three county areas should not be represented on the broad urban and rural reserve study area map.

The Metro Council, the Clackamas, Multnomah and Washington county commissions, and the three local urban and rural reserve advisory committees set up by counties, have also reviewed the proposed five-mile study area map.

Proposed Study Area Map

Based on the discussion at the April 9 and May 14 RSC meetings, staff revised the proposed five-mile area to include additional areas and remove some areas from consideration as can be seen in Attachment B. In general, the proposed study area map is defined by the original five-mile edge, county and watershed boundaries, and in a few instances roads. The proposed study area contains approximately 404,482 acres.

Based on a review of the reserve factors contained in the LCDC rules, staff felt that watershed boundaries were a logical tool to define the edge in those areas where extensions of the five-mile edge were identified. Watershed boundaries relate to both urban and rural reserves by defining the natural landscape and the more efficient ability to provide some urban services such as water and sewer services. After identifying the proposed boundary, staff evaluated it against the following data sets to determine if any

changes should occur: Oregon Dept. of Agriculture's Agricultural Land Hierarchy (foundation important, conflicted), Metro's Natural Landscape Features Inventory, Oregon Dept. of Forestry's Forestlands Development Zones, topography, floodplains, zoning, aerial photography, and major roadways, streams and railroad tracks.

The following amendments were made:

- The Columbia River Gorge National Scenic Area was removed
- The area between the scenic area and the City of Sandy is defined by the five-mile edge and the Sandy River
- The City of Sandy urban reserve areas are removed
- The area between Sandy, Estacada and Molalla is defined by watershed boundaries with the exception of three locations defined by Highway 211 near Sandy, S Hayden Road near Estacada and S Beaver Creek Road near Molalla
- The area between Molalla and the Clackamas County line is defined by the watershed boundary
- County boundaries define the area between the Pudding River and the City of Gaston
- The area between Gaston and Highway 6 is defined by the 5-mile edge
- As there is no defining edge or landmark in the area around the City of Banks and the junctions of Highway 26 with Highway 6 and Highway 47, staff extended the area a reasonable distance from the highway intersections and continued the area east to the five-mile boundary north of North Plains
- Include all of Multnomah County in the Sauvie Island area and the forested area extending from Forest Park.

In addition, the Clackamas County Reserves Policy Advisory Committee reviewed the proposed study area at their May 27 meeting and suggested extending the area to Highway 211 between Estacada and Molalla and between Molalla and the Clackamas County line.

Recommendation

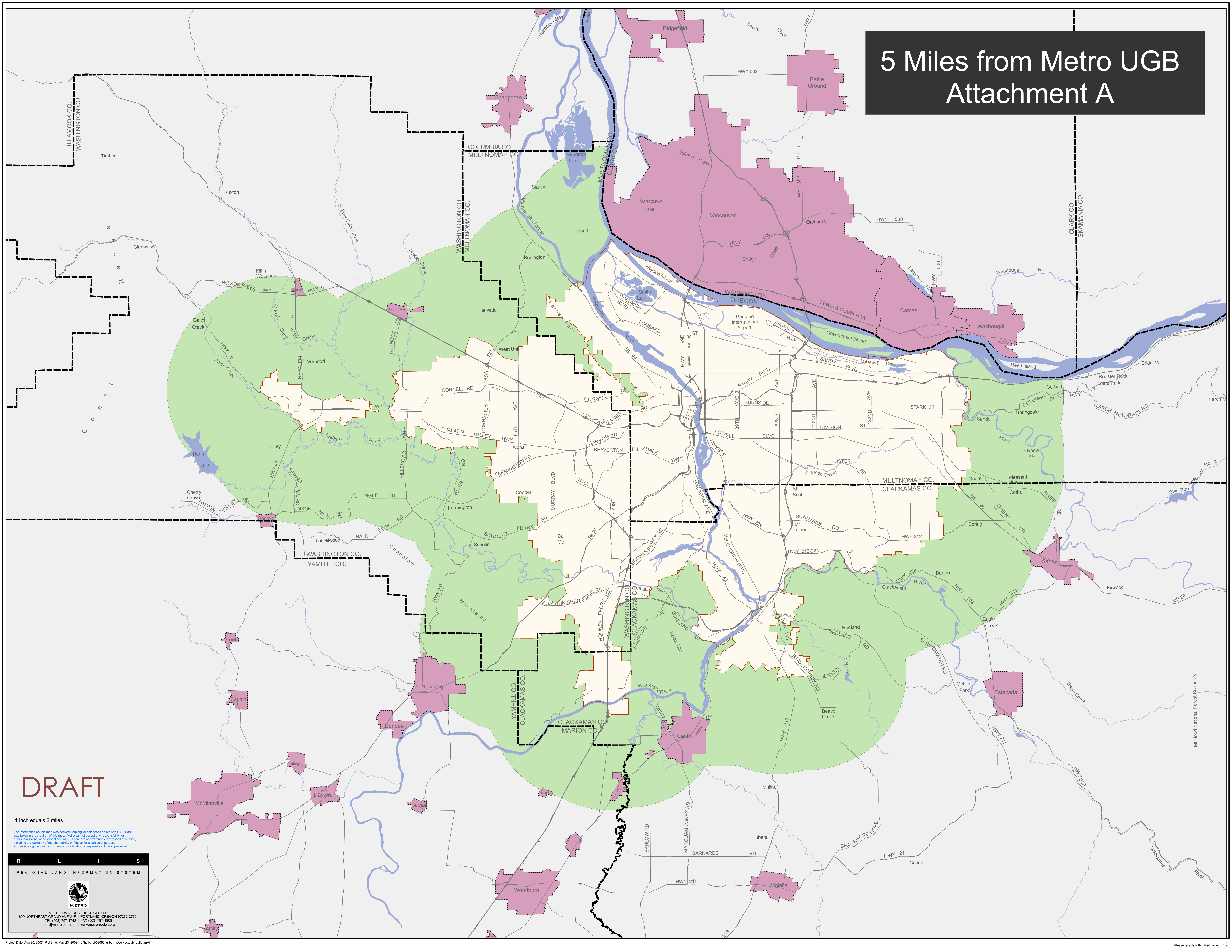
The Core Four technical staff recommends that the Core Four release the proposed urban and rural reserves study area map for public comment.

Next Steps

A series of six public forum events are scheduled throughout the region in June and July to raise public understanding of the urban and rural reserves process and receive public comment on the proposed broad urban and rural reserves study area. These public forums are being developed by the Core Four public involvement team and will be staffed by representatives from all four jurisdictions.

This outreach effort is intended to inform a Steering Committee discussion on September 9, at which time a final study reserves area map is scheduled to be endorsed. To facilitate the September decision, results of the public outreach effort will be summarized and made available to each county's coordinating committee, county commissions, Metro Council, and stakeholder groups in August.

5 Miles from Metro UGB Attachment A



DRAFT

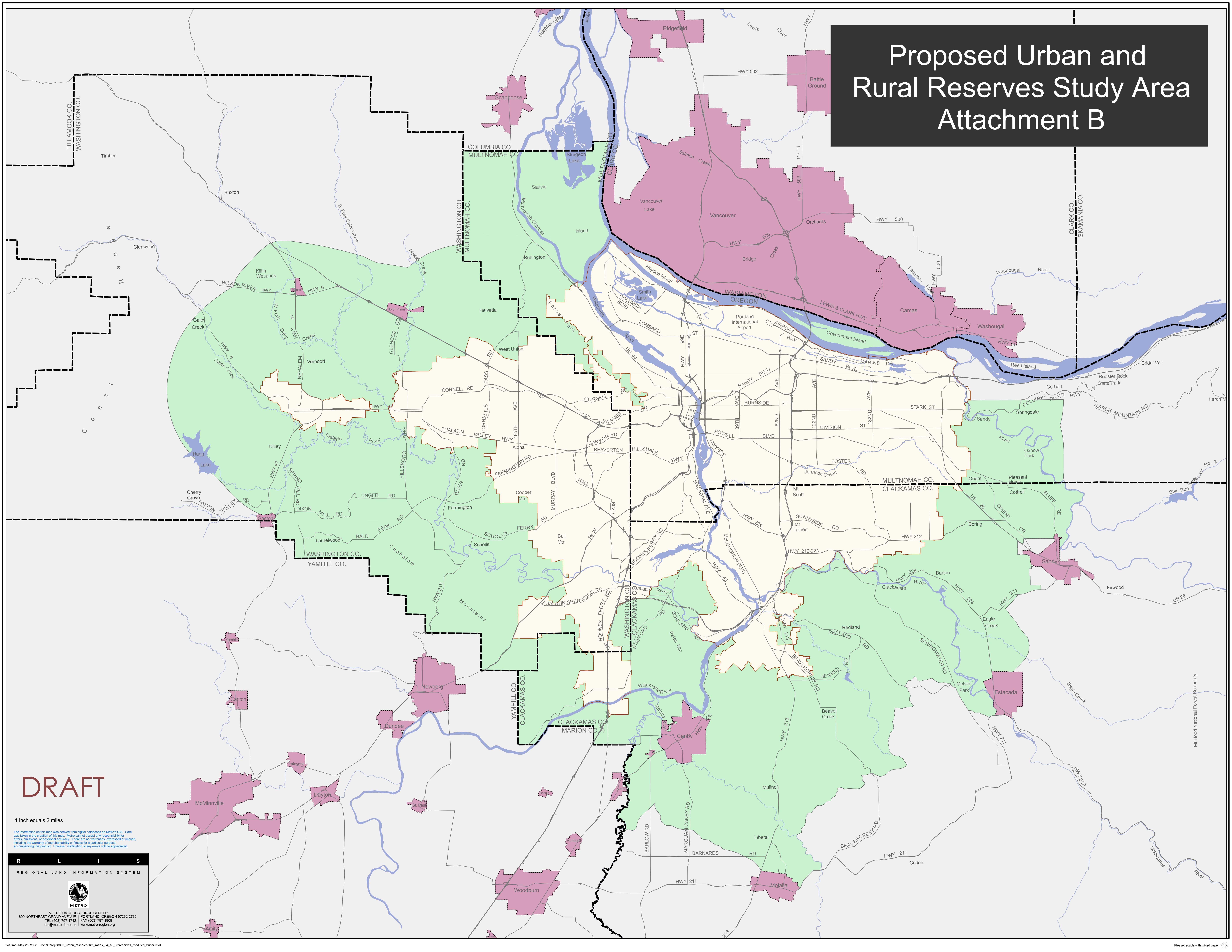
1 inch equals 2 miles

The information on this map was derived from digital databases on Metro's GIS. Care was taken in the creation of this map. Metro cannot accept any responsibility for errors, omissions, or positional accuracy. There are no warranties, expressed or implied, including the warranty of merchantability or fitness for a particular purpose, accompanying this product. However, notification of any errors will be appreciated.

R L I S
REGIONAL LAND INFORMATION SYSTEM

METRO DATA RESOURCE CENTER
600 NORTHEAST GRAND AVENUE | PORTLAND, OREGON 97232-2736
TEL (503) 797-1742 FAX (503) 797-1809
drc@metro-dist.org www.metro-region.org

Proposed Urban and Rural Reserves Study Area Attachment B



DRAFT

1 inch equals 2 miles

The information on this map was derived from digital databases on Metro's GIS. Care was taken in the creation of this map. Metro cannot accept any responsibility for errors, omissions, or positional accuracy. There are no warranties, expressed or implied, including the warranty of merchantability or fitness for a particular purpose, accompanying this product. However, notification of any errors will be appreciated.

R L I S
REGIONAL LAND INFORMATION SYSTEM

METRO
METRO DATA RESOURCE CENTER
600 NORTHEAST GRAND AVENUE | PORTLAND, OREGON 97232-2736
TEL (503) 797-1742 FAX (503) 797-1909
drc@metro.dst.or.us www.metro-region.org

DRAFT

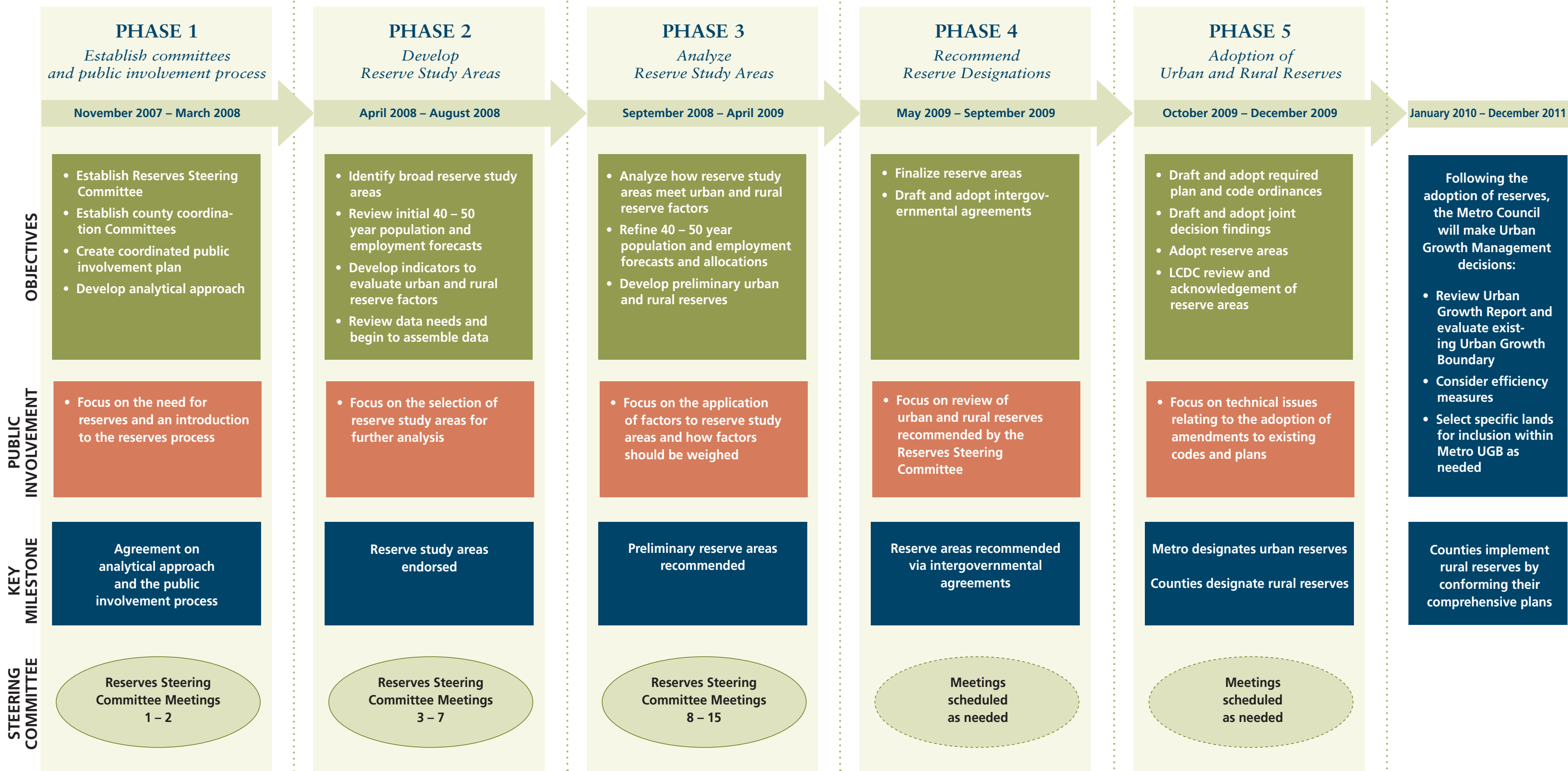
Coordinated Reserves Work Program Overview

2007

2008

2009

2010 – 11





Key Milestones for Designating Urban and Rural Reserves

work in progress

2008

Identifying and analyzing options for urban and rural reserves study areas

2009

Final analysis and decisions on urban and rural reserves

2010

Future decisions

WINTER

SPRING

SUMMER

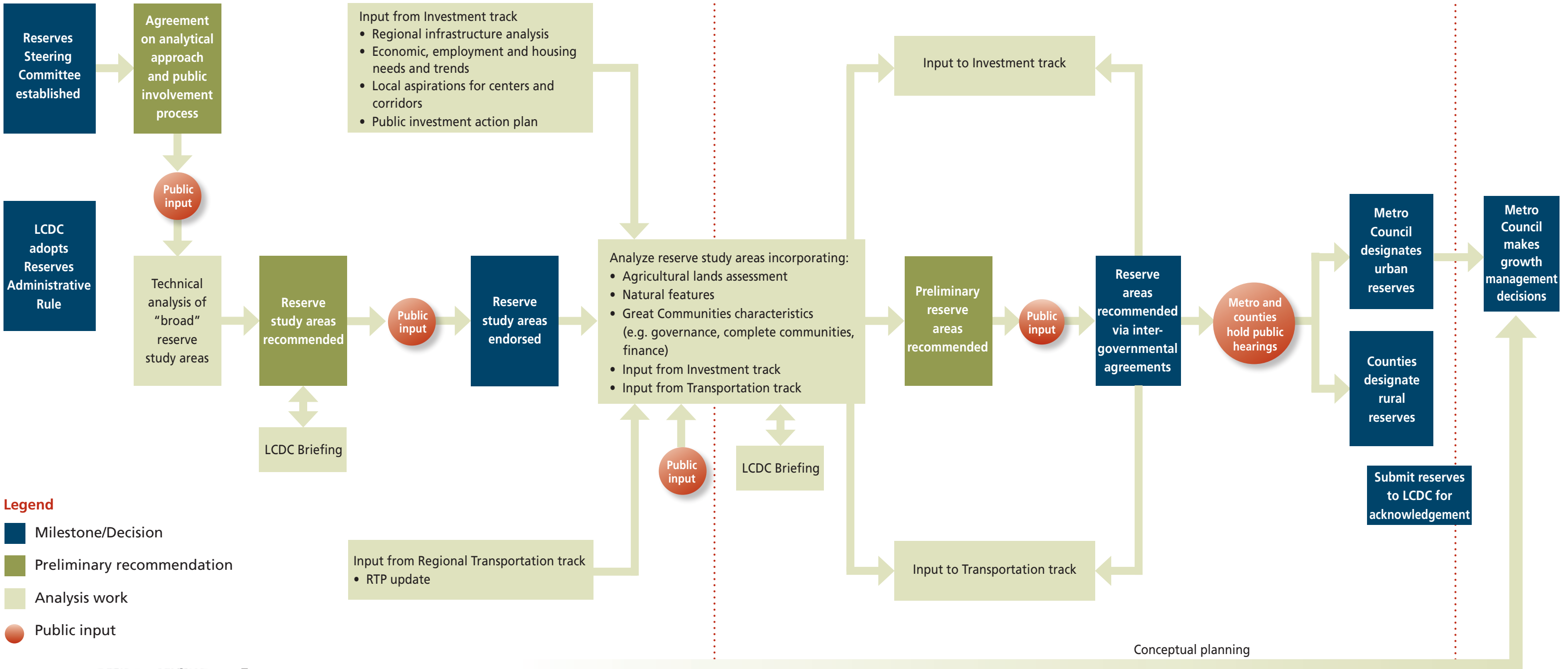
FALL

WINTER

SPRING

SUMMER

FALL





DATE: July 9, 2008

TO: Clackamas County Board of County Commissioners
Multnomah County Board of County Commissioners
Washington County Board of County Commissioners
Metro Council

FROM: Core Four Project Management Team

RE: *Status of DLCD grant request and urban/rural reserves budget*

Summary

This memorandum summarizes the status of the Technical Assistance Grant request submitted to the Department of Land Conservation and Development (DLCD) by the “Core 4” Reserves project partners – Clackamas, Multnomah, and Washington Counties and Metro – and outlines projected project costs for the Urban and Rural Reserves program. It is intended for use by the Core 4 jurisdictions in discussions of sharing project costs.

Background

In April 2008 the Core 4 Project Management Team submitted a Technical Assistance Grant request to DLCD, requesting a grant of \$467,775 to cover a portion of the estimated \$2,380,000 budget for the project (see attachments). Funding was requested for a facilitator/mediator to support the Reserves Steering Committee, implementation of the Coordinated Public Involvement Plan, and analysis/rating of Urban and Rural Reserves study areas.

The Reserves Project Management Team met with DLCD Director Richard Whitman on May 28, 2008 to discuss the application. While the agency understands the importance of the Reserves project and supports the effort, Director Whitman indicated that there are no funds available at this time. He stated that the agency has committed available funds to grant requests submitted by cities to support Periodic Review, consistent with DLCD funding priorities. We discussed other sources/approaches which the region could pursue including:

- Continue to use local funds while anticipating that unused grant dollars may become available at the end of August.
- Ask cities in the region to allocate money they requested for economic development to the Reserves project work associated with Goal 9, Economic Development.
- Request funding from the Emergency Board, the Economic Revitalization Team, and the Governor’s office.

Director Whitman agreed to assist with exploring funding options with the Emergency Board, Economic Revitalization Team, and the Governor's office, but there was a consensus at the meeting that the likelihood of success with these sources is not high.

The Core 4 group has discussed project funding several times. On November 16, 2007 the Core 4 agreed to submit a Technical Assistance Grant request to DLCDC and to split the cost for any portion of the work not funded. At the March 31, 2008 meeting, the Core 4 recognized that costs payable with local funds were being incurred, and agreed that they would be shared among the partners pending Technical Assistance Grant approval. Now that a greater level of uncertainty as to potential funding sources is apparent, the Core 4 requested this summary memo to facilitate funding discussions at each board.

Recommendations

Of immediate concern is the fact that the Reserves project is underway, and costs are being incurred. A highly skilled meeting facilitator/mediator (Deb Nudelman of Kearns & West) has been hired by the Core 4 to assure that meetings are well organized, kept on schedule and that the project goals are met within stipulated time limits. A key task for Kearns & West is to liaison with Core 4 and committee members to help develop consensus. The activities and actions of the Core 4 and the 31-member Reserves Steering Committee are essential to the success of this project, and therefore funding for the services of this consultant is critical.

Metro has been providing up-front payments for the Reserves Steering Committee facilitator on a monthly basis, and those costs have so far totaled approximately \$60,200 at the end of June 2008. Monthly billings are averaging around \$11,700 per month, and the total two-year project budget for the facilitator is \$280,000. Additional costs for meeting spaces and incidentals may add an additional \$20,000 over the two years, resulting in an estimated total budget of \$300,000 for meeting facilitation and process – or \$75,000 per jurisdiction. For each jurisdiction this break into fiscal years approximately as follows: FY 2007-2008: \$18,750; FY 2008-2009: \$37,500; FY 2009-2010: \$18,750.

Because of the importance the Core 4 has placed on the successful facilitation of the Reserves Steering Committee and Core 4 groups, staff recommends that the Core 4 jurisdictions split all the costs for the facilitation contract as previously agreed, while continuing to pursue other funding options as outlined above.

As shown in the attachments, total project costs including staffing, materials, and services are anticipated to total over \$2,380,000. This estimate includes only currently budgeted staff and does not include additional staff or consultants that might be desired in order to complete the Reserves project on time.

Attachments

Reserves products/costs summary table

DLCD Technical Assistance Grant request summary

DLCD Technical Assistance Grant request summary of products/costs

Oregon Department of Land Conservation and Development
TECHNICAL ASSISTANCE GRANT
Regional Reserves Project - Tasks & Related Cost Estimates

TASK #	DESCRIPTION	PRODUCTS	COST ESTIMATES:
1	Project Management		\$238,000.00
		Project Records	
2	Project Coordination / Final Products Approved		\$414,350.00
2a.		Regional Steering Committee	\$352,197.50
2b.		Washington County Coordinating Committee	\$20,717.50
2c.		Clackamas County Coordinating Committee	\$20,717.50
2d.		Multnomah County Coordinating Committee	\$20,717.50
3	Public Involvement		\$357,000.00
3a.		Coordinated Public Involvement Plan (Region)	\$107,100.00
3b.		Local Public Involvement Plans	\$60,540.00
3c.		Web Site(s) Management	\$49,980.00
3d.		Public Notices	\$30,345.00
3e.		Maps & Publications	\$56,260.00
3f.		Open Houses & Stakeholder Meetings	\$52,775.00
4	Manage & Coordinate Consultant tasks		\$0.00
5	Population & Employment Forecast(s)		\$160,650.00
5a.		Long-term Population and Employment Growth Forecast	\$35,343.00
5b.		Forecast Peer Review	\$28,917.00
5c.		Local Growth Aspirations	\$44,982.00
5d.		Development of Preliminary and Final Regional Growth Allocations	\$51,408.00
6	Develop 'Broad' Study Areas		\$140,000.00
6a.		Develop Urban Reserve Factors	\$14,000.00
6b.		Develop Rural Reserve Factors	\$14,000.00
6c.		Develop Natural Landscape Features Factors	\$14,000.00
6d.		Technical Analysis and Mapping of Factors	\$42,000.00
6e.		Analysis Findings and Summary Report	\$28,000.00
6f.		Broad Study Areas Endorsed	\$28,000.00
7	Develop and Rate 'FINAL' Study Areas		\$325,000.00
7a.		Establish Technical Review Process	\$45,500.00
7b.		Develop Final Review Factors / Criteria	\$50,375.00
7c.		Develop Final Review Methodology	\$39,000.00
7d.		Pilot for Technical Analysis	\$43,875.00
7e.		Pilot area results	\$32,500.00
8	Develop Preliminary Urban Reserves Recommendations		\$220,000.00
		Analysis and Rating	\$72,000.00
		Recommendations Matrix, Reports & Maps	\$148,000.00
9	Develop Preliminary Rural Reserves Recommendations		\$185,000.00
		Analysis and Rating	\$62,000.00
		Recommendations Matrix, Reports & Maps	\$94,500.00
- closure of Grant -			
10	Final Reserves Recommendations		\$63,920.00
11	Intergovernmental Agreements		\$63,920.00
12	Local Implementing Ordinances		\$65,280.00
13	Project documentation, Findings, Summary Report		\$146,880.00
Post Grant Subtotal:			\$340,000.00
TOTAL ESTIMATED PROJECT COSTS:			\$2,380,000.00
TOTAL PROJECT COSTS DURING GRANT BIENNIUM:			\$2,040,000.00

Grant Budget Summary			
	Grant Request	Local Contribution	Total Budget
Personal Services	\$222,829.00	\$1,556,383.00	\$1,779,212.00
Supplies	\$4,000.00	\$8,000.00	\$12,000.00
Contract services	\$180,000.00	\$165,880.00	\$345,880.00
Other	\$60,946.00	\$181,962.00	\$242,908.00
TOTAL	\$467,775.00	\$1,912,225.00	\$2,380,000.00

**Oregon Department of Land Conservation and Development
TECHNICAL ASSISTANCE GRANT
Regional Reserves Project**

GRANT PRODUCT COST SUMMARY

PRODUCT *		GRANT REQUEST	Local Contribution	Total Budget
2	Project Coordination / Final Products Approved	\$180,000.00	\$234,350.00	\$414,350.00
2a.	Regional Steering Committee	\$180,000.00	\$172,197.50	\$352,197.50
2b.	Washington County Coordinating Committee	\$0.00	\$20,717.50	\$20,717.50
2c.	Clackamas County Coordinating Committee	\$0.00	\$20,717.50	\$20,717.50
2d.	Multnomah County Coordinating Committee	\$0.00	\$20,717.50	\$20,717.50
3	Public Involvement	\$96,775.00	\$260,225.00	\$357,000.00
3a.	Coordinated Public Involvement Plan (Region)	\$0.00	\$107,100.00	\$107,100.00
3b.	Local Public Involvement Plans	\$0.00	\$60,540.00	\$60,540.00
3c.	Web Site(s) Management	\$25,000.00	\$24,980.00	\$49,980.00
3d.	Public Notices & Related Materials	\$0.00	\$30,345.00	\$30,345.00
3e.	Maps & Publications	\$25,000.00	\$31,260.00	\$56,260.00
3f.	Open Houses & Stakeholder Meetings	\$46,775.00	\$6,000.00	\$52,775.00
8	Develop Preliminary Urban Reserves Recommendations	\$108,000.00	\$112,000.00	\$220,000.00
	Analysis and Rating	\$0.00	\$72,000.00	\$72,000.00
	Recommendations Matrix, Reports & Maps	\$108,000.00	\$40,000.00	\$148,000.00
9	Develop Preliminary Rural Reserves Recommendations	\$83,000.00	\$102,000.00	\$185,000.00
	Analysis and Rating	\$0.00	\$62,000.00	\$62,000.00
	Recommendations Matrix, Reports & Maps	\$54,500.00	\$40,000.00	\$94,500.00
TOTALS:		\$467,775.00	\$708,575.00	\$1,176,350.00

* See attached table showing overall project tasks and related cost estimates.