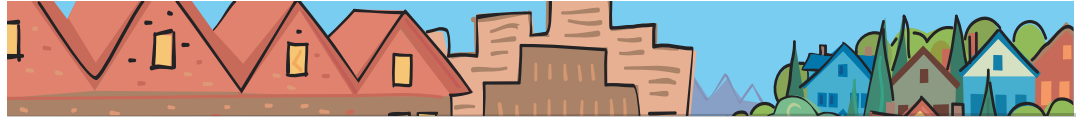


Rod Park

METRO COUNCIL DISTRICT 1 NEWS



METRO

PEOPLE PLACES
OPEN SPACES

Rod Park represents District 1, which includes Fairview, Gresham, Happy Valley, Maywood Park, Troutdale, Wood Village, Damascus and portions of East Portland.

Improving our transportation system



Growth and traffic congestion seem to go together, affecting our lives in many ways, from our travel to work and play, to freight delivery to our homes and businesses. Transportation along with land-use planning is perhaps one of the most important components of a thriving and functioning area. Our regional economy and our quality of life are dependent on the enhancements we make to our transportation system and it's connection to our land use decisions.

Funding transportation projects is a growing challenge without a solution in sight. State and federal funding sources no longer exist as they once did as inflation has taken its toll. In order to maintain what has already been built, funding has been shifted away from new projects to pay for basic maintenance. The future cannot be built with tools from the past. We need new solutions to reflect the changing world we find ourselves in, and we need to exercise leadership for developing new ways to fund our needs while working to get our share of existing funding sources.

Metro is currently updating the state portion of the Regional Transportation Plan, which takes into account the connection between land-use and transportation. Specifically, this update is considering how our land-use decisions affect the livability of our communities. We are focusing our planning on achieving a safe and environmentally sound transportation system that supports trade, industry and our personal needs.

We will soon be seeking input on your thoughts on how our transportation should operate and be funded. I would urge you to stay involved on this important aspect of our region's quality of life. More information can be found at www.oregonmetro.gov/rtp.

—Rod Park

Stop Illegal Dumping in your Neighborhood – Call Metro's RID Patrol

Did you know that Metro cleans up more than 1,500 illegal dumpsites throughout the region each year? Illegal dumping of household garbage, old tires, hazardous waste and other refuse threatens human health, wildlife and the environment. Metro's Report Illegal Dumping (RID) Patrol partners with local government agencies, law enforcement and community members to ensure that illegal dumpsites on public land are quickly cleaned up and investigated.

RID Patrol operates two trucks, staffed by correctional officers and inmate cleanup crews, to pick up garbage dumped on public lands. Investigating officers will try to locate the owner of the trash and track down the illegal hauler. Depending on the situation, the owners of the trash may be fined or cited along with the hauler who dumped illegally.

Fines are issued to cover the cost of cleaning up and properly managing waste from dumpsites.

continued

Metro's RID Patrol can provide tools to prevent illegal dumping and help keep your neighborhood clean and green. For more information, call Metro Recycling at 503-234-3000, send e-mail to ridpatrol@oregonmetro.gov or visit www.oregonmetro.gov/ridpatrol. In unincorporated Washington County, please call 503-846-8609. If you would like more information about how the RID Patrol can work with your community organization to prevent illegal dumping, call Tiffany Gates at 503-797-1867.

Metro and Gresham officials offer tours of newly protected natural areas



Come visit Gabbert Hill, one of the new areas protected through Gresham and Metro's partnership. Until last year, this 37-acre natural area was one of only a few key, privately owned parcels that interrupted Metro and the City of Gresham's ownership in the East Buttes. Its protection helps permanently secure a connected habitat corridor very critical for wildlife movement in our growing region.

Metro President David Bragdon, Metro Councilor Rod Park and Gresham Mayor Shane Bemis will co-host a short site visit to highlight the great partnership between the two agencies. Metro and Gresham staff will be on hand to answer questions. Community partners from Johnson Creek Watershed Council and The Audubon Society of Portland will offer their perspective about what the new land acquisition means to recovery efforts in the Johnson Creek watershed and the future of the region's wildlife.

6:30 to 7:30 p.m. Thursday, July 24
East Buttes natural area – Gresham

Suitable for adults and children 10 and older. Free. Advance registration required; call Carrie Belding at 503-797-1545 or send e-mail to carrie.belding@oregonmetro.gov.

District 1 events

Oxbow Adventures

10:30 a.m. to noon
Wednesdays, July 16th and 30th

Find out all about big birds, participate in a scavenger hunt, and discover creatures in the Sandy River as part of a series of nature programs for children ages 5-10 at Oxbow Regional Park. Registration required. The cost is \$2 per participating child; there is a park entry fee of \$4 per car or \$7 per bus. For more information, call 503-797-1850 ext 4.

Oxbow campfire program

6:30 p.m. to 9:30 p.m.
Fridays and Saturdays, July 18, 19, 25, 26

A series of campfire events held in the outdoor forest amphitheater across from the campground. Cost is \$4 per vehicle entry into the park. For more information, call 503-797-1850.

- No Time 2 Lose Band (July 18)
- Salmon Stories & Bear Tales (July 19)
- Campfire Tunes (July 25)
- Yvonne's Gumbo of Stories (July 26)

Sandy River Gorge Work Party

9:00 a.m. to 4:00 p.m.
Saturday, July 19

Help maintain trails, roads and culverts and remove invasive species along the Sandy River Gorge. Registration required. For more information, call Susan at 503-802-8100.

Councilor Rod Park contact information

600 NE Grand Ave.
Portland, OR 97232
503-797-1547 | 503-797-1793 fax
rod.park@oregonmetro.gov

Kathryn Sofich, policy coordinator
503-797-1941
kathryn.sofich@oregonmetro.gov

www.oregonmetro.gov

About Metro

Clean air and clean water do not stop at city limits or county lines. Neither does the need for jobs, a thriving economy and good transportation choices for people and businesses in our region. Voters have asked Metro to help with the challenges that cross those lines and affect the 25 cities and three counties in the Portland metropolitan area.

A regional approach simply makes sense when it comes to protecting open space, caring for parks, planning for the best use of land, managing garbage disposal and increasing recycling. Metro oversees world-class facilities such as the Oregon Zoo, which contributes to conservation and education, and the Oregon Convention Center, which benefits the region's economy.

Your Metro representatives

Metro Council President
David Bragdon

Metro Councilors
Rod Park, District 1
Carlotta Collette, District 2
Carl Hosticka, District 3
Kathryn Harrington, District 4
Rex Burkholder, District 5
Robert Liberty, District 6

Auditor
Suzanne Flynn

cth / v.2

Printed on recycled paper