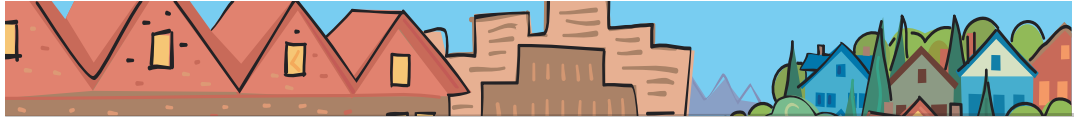


# Carl Hosticka

## METRO COUNCIL DISTRICT 3 NEWS



**METRO**

PEOPLE PLACES  
OPEN SPACES

Carl Hosticka represents District 3, which includes portions of Washington and Clackamas counties and the cities of Beaverton, Durham, King City, Sherwood, Tigard, Tualatin and Wilsonville.



### Metro presents region's first walking guide

In July, Metro unveiled a new regional walking guide designed to connect residents with newly protected natural areas, scenic parks, historical sites, main streets and commercial districts throughout the Portland-Vancouver area. The 240-page Walk There! guidebook, indexed by city, offers 50 detailed routes organized by walk type and color-coded regional sections.

Thanks to support from Kaiser Permanente, local governments and community groups, Metro developed this comprehensive walking guide with every level of walker in mind – with routes that vary from easy strolls to longer distance walks with elevated terrains. A number of routes in the guide are suitable for individuals with mobility assistance devices or strollers. An informational bar on the first page of each route lists the difficulty rating, GPS coordinates for the start location, and distance. Each section offers a detailed map and description that explores the location's rich history and landscape.

Pocket-sized copies of Walk There! can be picked up at Metro at no charge. The guidebook will be distributed through multiple venues, including Kaiser health education classes and other programs, community walking events and DriveLess/Save More booths. The guide can also be ordered online for a \$5 shipping fee at [www.oregonmetro.gov/walk](http://www.oregonmetro.gov/walk). Visitors to the web site can find pick-up locations or download all 50 featured walks.



### Metro begins process to identify next 30 years of high capacity transit projects

The Portland metropolitan region is home to a pioneering transit system. Over 30 years ago, the region decided to grow differently than other cities when elected leaders and citizens rallied against construction of freeways through developed neighborhoods and instead directed resources to a light rail project along I-84. Since then, the region has constructed 44 miles of light rail, with an additional 6.5 miles of light rail and 14.7 miles of commuter rail currently under construction.

Metro is launching a study to consider where the next 30 years of high capacity transit investments should go. High capacity transit is characterized by routes with fewer stops and some separation from regular traffic and could mean light rail, commuter rail, streetcar or buses on a dedicated right of way.

In planning for future high capacity transit routes, Metro is not starting from scratch but building on a legacy of planning work that is captured in the 2040 Growth Concept

*continued*

and the Regional Transportation Plan. The 2040 Growth Concept calls for high capacity transit service to regional centers like Oregon City and town centers such as Tualatin. The plan will be adopted by the Metro Council in spring 2009 after review by community members, elected officials and technical staff from around the region.

### Get involved!

Attend a workshop to learn more about the project and provide input about what areas should be served with high capacity transit in the future.

5 to 8 p.m. Tuesday, Aug. 12  
Walters Cultural Arts Center  
527 E. Main St., Hillsboro

5 to 8 p.m. Wednesday, Aug. 13  
Oregon City Pioneer Center  
615 Fifth St., Oregon City

5 to 8 p.m. Thursday, Aug. 14  
East Portland Community Center  
740 SE 106th Ave., Portland

To learn more about the project or get on the mailing list, call 503-797-1755, send an e-mail to [trans@oregonmetro.gov](mailto:trans@oregonmetro.gov), or visit the project web site at [www.oregonmetro.gov/goingplaces](http://www.oregonmetro.gov/goingplaces).

## Cooper Mountain Nature Park construction begins in August



Construction at the nature park includes a parking area, nature center and trail system that will help visitors enjoy Cooper Mountain's unique landscape and learn about the plants and animals found there. The nature center will include space for environmental education programs, a base for volunteers and restrooms for everyone. Gardens will showcase native and drought-tolerant plants suited to Cooper Mountain's dry climate and south-facing slopes. Funding for construction comes from Metro's natural areas bond measure

and a grant from the Oregon Parks and Recreation Department.

Three miles of trails will traverse the site; including a wheelchair accessible loop. The trails pass through each of Cooper Mountain's distinct habitats - from forest to prairie to oak woodlands. Hikers will have grand views of the Chehalem Mountains and Tualatin Valley, close-up looks at Oregon white oaks and spring blooms, and glimpses of rare animal species like the Northern red-legged frog and Western gray squirrel.

Together with volunteers, Metro's science and stewardship team has spent the past decade restoring the oak woodlands, native prairies, Douglas-fir forests and perched wetlands at Cooper Mountain. Oak woodland and prairie habitats are rare in the Willamette Valley and their preservation offers an important link to the area's natural history. When the park opens to the public in 2009, visitors will be able to learn about Cooper Mountain's past while enjoying scenic beauty protected for the future.

## Council chamber A/V equipment upgrades survey

In July 2008, upgraded cable production equipment with broader recording and production capabilities was installed in the council chamber. Metro is interested in hearing about your experiences viewing council meetings and requesting records. Following the Aug. 6 Metro Council meeting, you can take a survey about your experiences. Visit [www.oregonmetro.gov/council](http://www.oregonmetro.gov/council) after Aug. 7 to take the survey.

## Councilor Carl Hosticka contact information

600 NE Grand Ave.  
Portland, OR 97232  
503-797-1549 | 503-797-1793 fax  
[carl.hosticka@oregonmetro.gov](mailto:carl.hosticka@oregonmetro.gov)

Maria Ellis, policy coordinator  
503-797-1939  
[maria.ellis@oregonmetro.gov](mailto:maria.ellis@oregonmetro.gov)

[www.oregonmetro.gov](http://www.oregonmetro.gov)

## About Metro

Clean air and clean water do not stop at city limits or county lines. Neither does the need for jobs, a thriving economy and good transportation choices for people and businesses in our region. Voters have asked Metro to help with the challenges that cross those lines and affect the 25 cities and three counties in the Portland metropolitan area.

A regional approach simply makes sense when it comes to protecting open space, caring for parks, planning for the best use of land, managing garbage disposal and increasing recycling. Metro oversees world-class facilities such as the Oregon Zoo, which contributes to conservation and education, and the Oregon Convention Center, which benefits the region's economy.

### Your Metro representatives

Metro Council President  
David Bragdon

Metro Councilors  
Rod Park, District 1  
Carlotta Collette, District 2  
Carl Hosticka, District 3  
Kathryn Harrington, District 4  
Rex Burkholder, District 5  
Robert Liberty, District 6

Auditor  
Suzanne Flynn