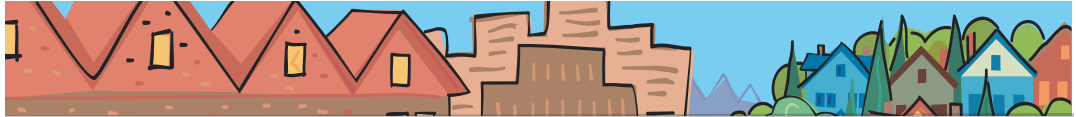


# Rod Park

METRO COUNCIL DISTRICT 1 NEWS



**METRO**

PEOPLE PLACES  
OPEN SPACES

**Rod Park represents  
District 1, which  
includes Fairview,  
Gresham, Happy  
Valley, Maywood  
Park, Troutdale,  
Wood Village,  
Damascus and  
portions of  
East Portland.**



## A message from Councilor Park

Changes may be ahead for Blue Lake Regional Park. In July, the Metro Council directed staff to proceed to the next phase of this exciting project to analyze the feasibility of funding, designing and constructing a proposed nature and golf learning center.

If feasible, the nature and golf learning center will be the next in a series of improvements outlined in a Blue Lake Regional Park master plan update adopted in 2001. The proposed center would be developed on the east and west sides of Blue Lake Road and include a nine hole golf course that would offer new players a chance to build their skills while also challenging more experienced players. Special programs would invite young players and families to try golf in an affordable and comfortable environment. Plans also include a fitness trail, wildlife watching opportunities and connections to the nearby 40-Mile Loop Trail.

The Blue Lake nature and golf learning center design will go above and beyond simply complying with applicable regulations and strive to maximize the wildlife habitat and water quality benefits. The small wetland located within the property is currently in need of restoration efforts. Planned restoration would significantly improve habitat value for songbirds, small mammals, amphibians, dragonflies and other wildlife. Enhancing the natural features of the site would also add visual appeal to the proposed golf course design, a beautiful setting for trail users and opportunities for learning. Plans include interpretive signs identifying the plants and animals found in the area. In addition we are attempting to enhance the water quality of Blue Lake through various techniques of introducing "live flow" and nutrient removal from the lake.

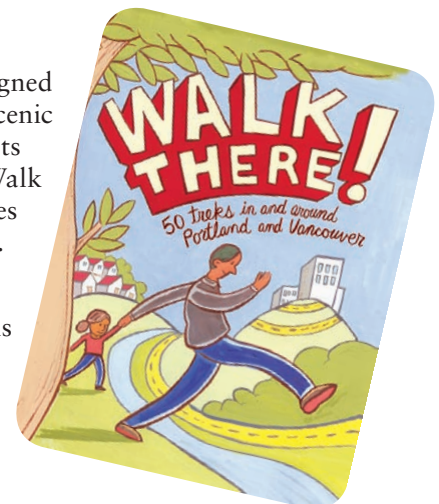
This proposed center has the ability to be something very special and can serve as a model for other areas of the region.

—Rod Park

## Metro presents region's first walking guide

In July, Metro unveiled a new regional walking guide designed to connect residents with newly protected natural areas, scenic parks, historical sites, main streets and commercial districts throughout the Portland-Vancouver area. The 240-page Walk There! guidebook, indexed by city, offers 50 detailed routes organized by walk type and color-coded regional sections.

Thanks to support from Kaiser Permanente, local governments and community groups, Metro developed this comprehensive walking guide with every level of walker in mind - with routes that vary from easy strolls to longer distance walks with elevated terrains. A number of routes



in the guide are suitable for individuals with mobility assistance devices or strollers. An informational bar on the first page of each route lists the difficulty rating, GPS coordinates for the start location, and length. Each section offers a detailed map and description that explores the location's rich history and landscape.

Pocket-sized copies of Walk There! can be picked up at Metro at no charge. The guidebook will be distributed through Kaiser health education classes, as well as community walking events and other Kaiser programs. The guide can also be ordered online for \$5 shipping fee at [www.oregonmetro.gov/walk](http://www.oregonmetro.gov/walk). Visitors to the web site can also download all 50-featured walks.

## **Metro begins process to identify next 30 years of high capacity transit projects**

The Portland metropolitan region is home to a pioneering transit system. Over 30 years ago, the region decided to grow differently than other cities when elected leaders and citizens rallied against construction of freeways through developed neighborhoods and instead directed resources to a light rail project along I-84. Since then, the region has constructed 44 miles of light rail (the Blue, Red and Yellow lines). An additional 6.5 miles of light rail (Green line) and 14.7 miles of commuter rail (WES) are currently under construction. These lines connect the far reaches of the urban area from Hillsboro to Gresham and from north Portland to Clackamas, and to many neighborhoods in between.

Metro is launching a study to consider where the next 30 years of high capacity transit investments should go. High capacity transit is characterized by routes with fewer stops and some separation from regular traffic and could mean light rail, commuter rail, streetcar or buses on a dedicated right of way. Metro, the agency responsible for regional planning, will complete the Regional High Capacity Transit Plan along with TriMet, the Oregon Department of Transportation and the 25 cities and three counties in the region. The plan will be closely coordinated with the City of Portland's Streetcar System Plan.

In planning for future high capacity transit routes, we're not starting from scratch but building on a legacy of planning work that is captured in the 2040 Growth Concept and the Regional Transportation Plan. The 2040 Growth Concept, adopted in 1995 after an extensive public engagement process, calls for high capacity transit service to regional centers like Oregon City and town centers such as Tualatin.

The High Capacity Transit System Plan will provide the region with a prioritized set of corridors based on planned land uses, community values and potential ridership. The plan will be adopted by the Metro Council in spring 2009 after review by community members, elected officials and technical staff from around the region.

## **Get involved!**

Attend a workshop to learn more about the project and provide input about what areas should be served with high capacity transit in the future.

5 to 8 p.m. Tuesday, Aug. 12  
Walters Cultural Arts Center  
527 E. Main St., Hillsboro

5 to 8 p.m. Wednesday, Aug. 13  
Oregon City Pioneer Center  
615 Fifth St., Oregon City

5 to 8 p.m. Thursday, Aug. 14  
East Portland Community Center  
740 SE 106th Ave., Portland

To learn more about the project or to get on the mailing list, call 503 -797-1755, send an e-mail to [trans@oregonmetro.gov](mailto:trans@oregonmetro.gov), or visit the project web site at [www.oregonmetro.gov/goingplaces](http://www.oregonmetro.gov/goingplaces).

## **About Metro**

Clean air and clean water do not stop at city limits or county lines. Neither does the need for jobs, a thriving economy and good transportation choices for people and businesses in our region. Voters have asked Metro to help with the challenges that cross those lines and affect the 25 cities and three counties in the Portland metropolitan area.

A regional approach simply makes sense when it comes to protecting open space, caring for parks, planning for the best use of land, managing garbage disposal and increasing recycling. Metro oversees world-class facilities such as the Oregon Zoo, which contributes to conservation and education, and the Oregon Convention Center, which benefits the region's economy.

## **Your Metro representatives**

Metro Council President  
David Bragdon

Metro Councilors  
Rod Park, District 1  
Carlotta Collette, District 2  
Carl Hosticka, District 3  
Kathryn Harrington, District 4  
Rex Burkholder, District 5  
Robert Liberty, District 6

Auditor  
Suzanne Flynn

## **Councilor Rod Park contact information**

600 NE Grand Ave.  
Portland, OR 97232  
503-797-1547 | 503-797-1793 fax  
[rod.park@oregonmetro.gov](mailto:rod.park@oregonmetro.gov)

Kathryn Sofich, policy coordinator  
503-797-1941  
[kathryn.sofich@oregonmetro.gov](mailto:kathryn.sofich@oregonmetro.gov)  
[www.oregonmetro.gov](http://www.oregonmetro.gov)