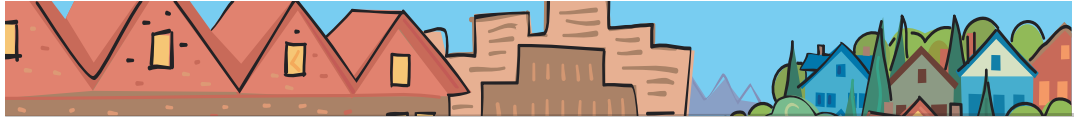


# Carl Hosticka

## METRO COUNCIL DISTRICT 3 NEWS



**METRO**

PEOPLE PLACES  
OPEN SPACES

**Carl Hosticka**  
represents  
**District 3, which**  
includes portions  
of Washington and  
Clackamas counties  
and the cities of  
Beaverton, Durham,  
King City, Sherwood,  
Tigard, Tualatin and  
Wilsonville.



### **Metro Council approves Locally Preferred Alternative for Portland-Milwaukie Light Rail Project**

In July, the Metro Council unanimously approved the Locally Preferred Alternative (LPA) for the 7.4-mile Portland-Milwaukie Light Rail Project. The line will provide new transportation options for communities in North Clackamas County, Southeast Portland and the South Waterfront area.

The new line will run from Portland State University to Park Avenue in Oak Grove, following the Tillamook Branch railroad in the North Milwaukie industrial area through downtown Milwaukie. The project includes a Willamette River crossing beginning at Southwest Porter Street, ending near Southeast Sherman Street. The bridge will carry light rail, buses and any future Portland Streetcar routes, and will include 12-foot-wide pathways for cyclists and pedestrians.

The LPA was originally recommended by a steering committee comprised of elected officials from the corridor, based on technical work, a similar recommendation from the Citizen Advisory Committee and responses from a 45-day public comment period.

The line is slated to begin construction in 2011 and is projected by 2030 to service 25,000 light rail riders per day. The project is expected to cost between \$1.25 and \$1.4 billion. Funding will come from the Federal Transit Administration, lottery-backed bonds approved by the Oregon Legislature and local shares with contributions from Metro, TriMet, Clackamas County and the cities of Portland and Milwaukie.

Metro and TriMet are leading the Portland-Milwaukie Project in partnership with the Oregon Department of Transportation, the cities of Milwaukie, Portland and Oregon City, and Clackamas and Multnomah counties.

### **Metro Council awards grants to three neighborhood enhancement projects**

The Metro Council has dedicated \$389,500 in matching grant funds to improve water quality, support local wildlife and increase access to nature for residents. The Nature in Neighborhoods Capital Grants Program is designed to fund projects that preserve or enhance natural features and their ecological functions on public lands in urban neighborhoods. The grant program strives to help ensure that every community enjoys clean water and nature as an element of its character and livability.

A committee, comprised of citizens, local government officials and natural resource experts from across the region, was appointed by the Metro Council to review grant applications and make recommendations for funding. The projects selected for funding include the creation of a new park designed with native plantings next to a mixed-income housing development in Northern Clackamas County, a nature discovery and demonstration garden called "Conservation Corner" at the new offices of the East Multnomah County Soil and Water Conservation District and restoration of Crystal Springs Creek, a tributary of Johnson Creek, at Westmoreland Park.

*continued*

For more information on the Nature in Neighborhoods Capital Grants Program, please visit [www.oregonmetro.gov/nature](http://www.oregonmetro.gov/nature).

## **Metro proposal seeks to increase business recycling**

Nearly 300,000 tons of paper and containers are recycled by local businesses annually; yet, opportunities for improvement still remain as commercial sources account for almost half of the annual waste disposal in the region.

Every year, more than 100,000 tons of recyclable paper and containers (aluminum/tin cans, plastic bottles, glass bottles and jars) are improperly disposed. In an effort to increase local business recycling, Metro, in conjunction with other local government organizations, created a free education and technical assistance program called Recycle at Work. Although the program has been successful, there are still a number of businesses that opt not to recycle.

After a lengthy public outreach process that included meetings between local business groups and elected officials, community surveys, and public discussion, a proposal that would require local governments to adopt a mandatory business recycling ordinance was recommended.

Since most businesses already recycle, this requirement would simply formalize what most businesses are already doing. For those businesses that do not recycle, the requirement asks that they recycle the same items residents already recycle at home.

The goal of the proposed ordinance is to recover 80,000 tons of recyclable paper and containers currently sent to landfills, yielding a reduction in greenhouse gases and energy consumption while increasing natural-resource savings.

Metro would collaborate with local governments to identify challenges and opportunities for improvement in complying with the business recycling requirements ordinance, rather than adopting a penalty approach.

The Metro Council is scheduled to review the proposed business recycling requirements at its weekly council meetings on Sept. 11 and Sept. 18. To learn more about the proposal, visit [www.oregonmetro.gov](http://www.oregonmetro.gov).

gov/businessrequirements. For free recycling assistance and resources for your workplace, visit [www.RecycleAtWork.com](http://www.RecycleAtWork.com) or call Metro at 503-234-3000.

## **The 36th Annual Special Park Districts Forum comes to Portland**

It's an exciting time to be thinking about parks in the Portland metropolitan area. The launch of the Connecting Green Alliance has brought state and local agencies, businesses, non-profits and citizens from across the region together to create the greatest system of parks, natural areas and trails in the world. On the heels of such an exciting adventure comes the 36th Annual Special Park Districts Forum, a gathering of professionals from park, recreation and natural area special districts from across the United States and Canada, co-hosted by Metro Regional Parks and Greenspaces, Portland Parks and Recreation and Tualatin Hills Park and Recreation district. Building on our region's experience in urban planning and sustainability, the 2008 forum is titled Connecting Green: Growing Sustainable Parks.

Beginning Monday, Sept. 8, participants will be immersed in three days of tours, networking and partnership building while exploring the region's abundant natural beauty. Forum attendees will have an opportunity to explore some of the region's greatest natural spaces, including Metro's Oxbow Regional Park, banks of the Willamette River and the Tualatin Hills Nature Park, while learning how to create parks systems that are sustainable now and in the future. Metro is proud to co-host this year's forum and exchange ideas about growing sustainable parks, resource management, planning, education, recreation programs and much more.

### **Councilor Carl Hosticka contact information**

600 NE Grand Ave.  
Portland, OR 97232  
503-797-1549 | 503-797-1793 fax  
[carl.hosticka@oregonmetro.gov](mailto:carl.hosticka@oregonmetro.gov)

Veronica Valenzuela, policy coordinator  
503-797-1939  
[veronica.valenzuela@oregonmetro.gov](mailto:veronica.valenzuela@oregonmetro.gov)  
[www.oregonmetro.gov](http://www.oregonmetro.gov)

## **About Metro**

Clean air and clean water do not stop at city limits or county lines. Neither does the need for jobs, a thriving economy and good transportation choices for people and businesses in our region. Voters have asked Metro to help with the challenges that cross those lines and affect the 25 cities and three counties in the Portland metropolitan area.

A regional approach simply makes sense when it comes to protecting open space, caring for parks, planning for the best use of land, managing garbage disposal and increasing recycling. Metro oversees world-class facilities such as the Oregon Zoo, which contributes to conservation and education, and the Oregon Convention Center, which benefits the region's economy.

### **Your Metro representatives**

Metro Council President  
David Bragdon

Metro Councilors  
Rod Park, District 1  
Carlotta Collette, District 2  
Carl Hosticka, District 3  
Kathryn Harrington, District 4  
Rex Burkholder, District 5  
Robert Liberty, District 6

Auditor  
Suzanne Flynn