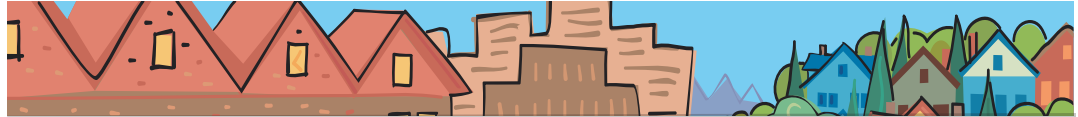


# Kathryn Harrington

## METRO COUNCIL DISTRICT 4 NEWS



**METRO**

PEOPLE PLACES  
OPEN SPACES

**Kathryn Harrington  
represents**

**District 4, which  
includes Northern  
Washington  
County, Cornelius,  
Hillsboro, Forest  
Grove, Northwest  
Beaverton, Aloha,  
Rock Creek, Bonny  
Slope, Bethany,  
Raleigh Hills, West  
Slope, Cedar Mill  
and Cedar Hills.**



### **We live in a time of transformation**

Every day we each hear and read news of current events highlighting economic, climate and infrastructure challenges. In response to such events, this summer I have had the opportunity to attend some focused seminars dealing with transportation, water and energy needs. These are all critical infrastructure systems that together work to enable our individual and community quality of life.

The message in current events and reinforced in the seminars is that the principles on which infrastructure systems used to be built are undergoing change, sometimes dramatic change. Transportation systems are more complex and expensive, and harder to build. Water supplies for the long-term future must be identified and planned today. Energy supplies are being challenged by many world factors, and the sources we have long relied on won't sustain our long-term growth by themselves. Our overall thinking about critical infrastructure has to adjust.

While it is clear that individuals, businesses and all levels of government are making many changes to adapt, it's easy to wonder: Are we changing fast enough to make an appreciable difference? It is also clear that government does not have the resources that it used to have to confront the wide range of challenges we're facing today. It will take concerted effort and energy to accommodate the need for transformation, to step up the rate and breadth of change.

As each of us spends more time enjoying the amenities of the neighborhoods within our reach – neighborhood parks, playgrounds, meeting spots, farmers markets, plazas, water features – we are reminded of the important role that our local community plays in our everyday life. Our local communities are great places, and the more we take advantage of them, the better they get. That fact, along with the clear challenges of today, reinforces for me how important it is that Metro and your local government work together on the wisest possible use of resources to invest in our local communities. With strong support for local options, we can concentrate infrastructure investment (your dollars) for maximum and best use while supporting the different nature of each of the 25 cities and 3 counties that make up our metropolitan region.

Every few months, I meet with each city council in my district, Forest Grove, Cornelius, Beaverton and Hillsboro as well as with many community and neighborhood groups. For many of you, that might include a Citizen Participation Organization (CPO). We talk about many things, but increasingly we will be talking about the changes that we all are making and will make in the future as the world continues to change around us. I hope that you will join me in these discussions as we talk about planning and problem-solving issues of transportation, land use, sustainability, your community – our future together.

*continued*

For more information on events in District 4, see the Metro calendar: [www.oregonmetro.gov/calendar](http://www.oregonmetro.gov/calendar). For more information on regional transportation, visit [www.oregonmetro.gov/rtp](http://www.oregonmetro.gov/rtp). For more information on community planning efforts, visit [www.oregonmetro.gov/letstalk](http://www.oregonmetro.gov/letstalk).

—*Kathryn Harrington*

## Metro Council awards grants to three neighborhood enhancement projects

The Metro Council has dedicated \$389,500 in matching grant funds to improve water quality, support local wildlife and increase access to nature for residents. The Nature in Neighborhoods Capital Grants Program is designed to fund projects that preserve or enhance natural features and their ecological functions on public lands in urban neighborhoods. The grant program strives to help ensure that every community enjoys clean water and nature as an element of its character and livability.

A committee, comprised of citizens, local government officials and natural resource experts from across the region, was appointed by the Metro Council to review grant applications and make recommendations for funding. The projects selected for funding include the creation of a new park designed with native plantings next to a mixed-income housing development in Northern Clackamas County, a nature discovery and demonstration garden called “Conservation Corner” at the new offices of the East Multnomah County Soil and Water Conservation District and restoration of Crystal Springs Creek, a tributary of Johnson Creek, at Westmoreland Park.

For more information on the Nature in Neighborhoods Capital Grants Program, visit [www.oregonmetro.gov/nature](http://www.oregonmetro.gov/nature).

## Metro proposal seeks to increase business recycling

Nearly 300,000 tons of paper and containers are recycled by local businesses annually; yet, opportunities for improvement still remain as commercial sources account for almost half of the annual waste disposal in the region.

In an effort to increase local business recycling, Metro, in conjunction with other local government organizations, created a free education and technical assistance program called Recycle at Work. Although the program has been successful, there are still a number of businesses that opt not to recycle.

After a lengthy public outreach process that included meetings between local business groups and elected officials, community surveys, and public discussion, a proposal that would require local governments to adopt a mandatory business recycling ordinance was recommended.

Since most businesses already recycle, this requirement would simply formalize what most businesses are already doing. For those businesses that do not recycle, the requirement asks that they recycle the same items residents already recycle at home.

The goal of the proposed ordinance is to recover 80,000 tons of recyclable paper and containers currently sent to landfills, yielding a reduction in greenhouse gases and energy consumption while increasing natural-resource savings.

Metro would collaborate with local governments to identify challenges and opportunities for improvement in complying with the business recycling requirements ordinance, rather than adopting a penalty approach.

The Metro Council is scheduled to review the proposed business recycling requirements at its weekly council meetings on September 11th and September 18th. To learn more about the proposal, visit [www.oregonmetro.gov/businessrequirements](http://www.oregonmetro.gov/businessrequirements). For free recycling assistance and resources for your workplace, visit [www.RecycleAtWork.com](http://www.RecycleAtWork.com) or call Metro at 503-234-3000.

## Councilor Kathryn Harrington contact information

600 NE Grand Ave.  
Portland, OR 97232  
503-797-1553 | 503-797-1793 fax  
[kathryn.harrington@oregonmetro.gov](mailto:kathryn.harrington@oregonmetro.gov)

Veronica Valenzuela, policy coordinator  
503-797-1939  
[veronica.valenzuela@oregonmetro.gov](mailto:veronica.valenzuela@oregonmetro.gov)  
[www.oregonmetro.gov](http://www.oregonmetro.gov)

## About Metro

Clean air and clean water do not stop at city limits or county lines. Neither does the need for jobs, a thriving economy and good transportation choices for people and businesses in our region. Voters have asked Metro to help with the challenges that cross those lines and affect the 25 cities and three counties in the Portland metropolitan area.

A regional approach simply makes sense when it comes to protecting open space, caring for parks, planning for the best use of land, managing garbage disposal and increasing recycling. Metro oversees world-class facilities such as the Oregon Zoo, which contributes to conservation and education, and the Oregon Convention Center, which benefits the region's economy.

### Your Metro representatives

Metro Council President  
David Bragdon

Metro Councilors  
Rod Park, District 1  
Carlotta Collette, District 2  
Carl Hosticka, District 3  
Kathryn Harrington, District 4  
Rex Burkholder, District 5  
Robert Liberty, District 6

Auditor  
Suzanne Flynn