

Metro | Agenda

Meeting: Metro Policy Advisory Committee (MPAC)
Date: Wednesday, March 10, 2010
Time: 5 to 7 p.m.
Place: Council Chambers

5 PM	1.	<u>CALL TO ORDER</u>	Shane Bemis Chair
5:02 PM	2.	<u>SELF INTRODUCTIONS & COMMUNICATIONS</u>	Shane Bemis, Chair
5:05 PM	3.	<u>CITIZEN COMMUNICATIONS ON NON-AGENDA ITEMS</u>	
5:10 PM	4.	* Consideration of the MPAC Minutes for February 24, 2010	Shane Bemis, Chair
5:15 PM	5.	<u>COUNCIL UPDATE</u>	
	6.	<u>INFORMATION / DISCUSSION</u>	
5:20 PM	6.1	* Regional Transportation Plan Proposed Mobility Standards Action Plan – <u>DISCUSSION</u>	Kim Ellis
5:50 PM	6.2	* Performance Measures and the Greater Portland Indicators – <u>DISCUSSION</u>	Christina Deffebach Sheila Martin, PSU
6:20 PM	6.3	Climate Action Plan – <u>DISCUSSION</u>	Mike Hoglund
	*	• Overview of Metro Climate Activities	
	#	• Metro Area Greenhouse Gas Inventory	
	*	• State Greenhouse Gas Scenarios Mandates	
	*	• Metro Scenario Planning and Climate Change Toolbox	
	*	• Joint MPAC/JPACT Retreat Preparation	
6:50 PM	7.	<u>MPAC MEMBER COMMUNICATION</u>	
7 PM	8.	<u>ADJOURN</u>	Shane Bemis, Chair

Upcoming meetings and events:

1. Joint MPAC/JPACT retreat on climate change scheduled for Friday, April 2, 2010 from 8 a.m. to 12:30 p.m. at the Oregon Convention Center, Rm. F150-151.
2. Regular MPAC meeting scheduled for Wednesday, April 14, 2010 from 5 to 7 p.m. at the Metro Regional Center, Council Chamber.
3. Regular MPAC meeting scheduled for Wednesday, April 28, 2010 from 5 to 7 p.m. at the Metro Regional Center, Council Chamber.

* Material available electronically.

** Materials will be distributed electronically prior to the meeting.

Material provided at meeting.

All material will be available at the meeting.

For agenda and schedule information, call Kelsey Newell at 503-797-1916, e-mail: kelsey.newell@oregonmetro.gov.

To check on closure or cancellations during inclement weather please call 503-797-1700x.



2010 MPAC Tentative Agendas

Tentative as of March 3, 2010

<p><u>MPAC Meeting</u> March 10 (JPACT trip)</p> <ul style="list-style-type: none"> • Proposed Mobility Standards Action Plan (discussion) • Performance Measures and the Greater Portland Indicators (discussion) • Climate Action Plan (discussion) <ul style="list-style-type: none"> • Overview of Metro Climate Activities • Metro Area Greenhouse Gas Inventory • State Greenhouse Gas Scenarios Mandates • Metro Scenario Planning and Climate Change Toolbox • Joint MPAC/JPACT Retreat Preparation 	<p><u>MPAC Meeting - Canceled</u> March 24</p>
<p><u>April 2, 2010 – Joint MPAC/JPACT Retreat</u> <i>Location:</i> Oregon Convention Center, F150-151 <i>Time:</i> 8 a.m. to noon</p> <ul style="list-style-type: none"> • Climate Prosperity Project review • Greenhouse gas, University of Oregon climate change study, etc. • MTIP/STIP policy direction- Discussion <p><u>MPAC Meeting</u> April 14</p> <ul style="list-style-type: none"> • Performance Assessment Framework 	<p><u>MPAC Meeting</u> April 28</p> <ul style="list-style-type: none"> • Ordinance 10-xxxx, Adopting Urban Reserves (discussion)
<p><u>MPAC Meeting</u> May 12</p> <ul style="list-style-type: none"> • Ordinance 10-xxxx, Adopting Urban Reserves (recommendation to council) • Investment Strategy Update • Performance measures (placeholder) 	<p><u>MPAC Meeting</u> May 26</p> <ul style="list-style-type: none"> • 2035 RTP (discussion) • MPAC Employment Subcommittee Report (discussion) • Regional Framework Plan/Urban Growth Management Functional Plan Amendments (discussion) • Performance measures (placeholder)

<p><u>MPAC Meeting</u> June 9</p> <ul style="list-style-type: none"> • 2035 RTP (recommendation to council) • Performance Assessment (introduction) • If needed, Regional Framework Plan/Urban Growth Management Functional Plan Amendments 	<p><u>MPAC Meeting</u> June 23</p> <ul style="list-style-type: none"> • Performance Assessment (discussion) • Investment Strategy • If needed, Regional Framework Plan/Urban Growth Management Functional Plan Amendments
<p><u>MPAC Meeting</u> July 14</p>	<p><u>MPAC Meeting</u> July 28</p> <ul style="list-style-type: none"> • Draft Investment Strategy and Capacity Ordinance
<p><u>MPAC Meeting</u> August 11</p>	<p><u>MPAC Meeting</u> August 25</p>
<p><u>MPAC Meeting</u> September 8</p> <ul style="list-style-type: none"> • Draft Ordinance to meet 20-year forecasted growth (discussion) <ul style="list-style-type: none"> • Investment Strategy • Actions to meet forecasted growth • Regional Framework Plan/Urban Growth Management Functional Plan amendments 	<p><u>MPAC Meeting</u> September 22</p> <ul style="list-style-type: none"> • Draft Ordinance to meet 20-year forecasted growth (discussion) <ul style="list-style-type: none"> • Investment Strategy • Actions to meet forecasted growth • Regional Framework Plan/Urban Growth Management Functional Plan amendments
<p><u>MPAC Meeting</u> October 13</p> <ul style="list-style-type: none"> • Draft Ordinance to meet 20-year forecasted growth (discussion) <ul style="list-style-type: none"> • Investment Strategy • Actions to meet forecasted growth • Regional Framework Plan/Urban Growth Management Functional Plan amendments 	<p><u>MPAC Meeting</u> October 27</p> <ul style="list-style-type: none"> • Draft Ordinance to meet 20-year forecasted growth (discussion) <ul style="list-style-type: none"> • Investment Strategy • Actions to meet forecasted growth • Regional Framework Plan/Urban Growth Management Functional Plan amendments
<p><u>MPAC Meeting</u> November 10</p> <ul style="list-style-type: none"> • Draft Ordinance to meet 20-year forecasted growth (discussion) <ul style="list-style-type: none"> • Investment Strategy • Actions to meet forecasted growth • Regional Framework Plan/Urban Growth Management Functional Plan amendments 	<p><u>MPAC Meeting</u> November 17</p> <ul style="list-style-type: none"> • Draft Ordinance to meet 20-year forecasted growth (recommendation to council) <ul style="list-style-type: none"> • Investment Strategy • Actions to meet forecasted growth • Regional Framework Plan/Urban Growth Management Functional Plan amendments
<p><u>MPAC Meeting</u> December 15</p>	



METRO POLICY ADVISORY COMMITTEE
February 24, 2010
Metro Regional Center, Council Chambers

MEMBERS PRESENT

Matt Berkow
Jody Carson
Nathalie Darcy
Dennis Doyle
Carl Hosticka
Dick Jones
Charlotte Lehan, Vice Chair
Robert Liberty
Keith Mays
Charlynn Newton
Rod Park
Wilda Parks
Judy Shiprack

AFFILIATION

Multnomah Co. Citizen
City of West Linn, representing Clackamas Co. Other Cities
Washington Co. Citizen
City of Beaverton, representing Washington Co. 2nd Largest City
Metro Council
Clackamas Co. Special Districts
Clackamas Co. Commission
Metro Council
City of Sherwood, representing Washington Co. Other Cities
City of North Plains, City in Washington Co. outside UGB
Metro Council
Clackamas Co. Citizen
Multnomah Co. Commission

MEMBERS EXCUSED

Sam Adams
Ken Allen
Shane Bemis, Vice Chair
Tom Brian
Richard Burke
Pat Campbell
Amanda Fritz
Jack Hoffman
Alice Norris
Steve Stuart
Rick VanBeveren
Mike Weatherby
Jerry Willey
Dilafroz Williams
Richard Whitman

AFFILIATION

City of Portland
Port of Portland
City of Gresham, representing Multnomah Co. 2nd Largest City
Washington Co. Commission
Washington Co. Special Districts
City of Vancouver
City of Portland
City of Lake Oswego, representing Clackamas Co. Largest City
City of Oregon City, representing Clackamas Co. 2nd Largest City
Clark Co., Washington Commission
TriMet Board of Directors
City of Fairview, representing Multnomah Co. Other Cities
City of Hillsboro, representing Washington Co. Other Cities
Governing Body of School Districts
Oregon Dept. of Land Conservation & Development

ALTERNATES PRESENT

Shirley Craddick
Andy Duyck
Mary Olson
Marc Sans Soucie
Jennifer Donnelly

AFFILIATION

City of Gresham, representing Multnomah Co. 2nd Largest City
Washington Co. Commission
City of Lake Oswego, representing Clackamas Co. Largest City
City of Beaverton, representing Washington Co. 2nd Largest City
Representing Oregon Dept. of Land Conservation & Development

STAFF: Dick Benner, President David Bragdon, Alison Kean-Campbell, Beth Cohen, Andy Cotugno, Robin McArthur, Kelsey Newell, Sherry Oeser, Ken Ray, Andy Shaw, Randy Tucker, Sheena VanLeuven.

1. CALL TO ORDER AND DECLARATION OF A QUORUM

Vice Chair Charlotte Lehan declared a quorum and called the meeting to order at 5:12 pm.

2. SELF INTRODUCTIONS AND COMMUNICATIONS

All attendees introduced themselves.

3. CITIZEN COMMUNICATIONS ON NON-AGENDA ITEMS

There were none.

4. CONSENT AGENDA

Consideration of the MPAC minutes for February 10, 2010

MOTION: Ms. Nathalie Darcy moved, and Councilor Jody Carson seconded, to approve the MPAC minutes for February 10, 2010

ACTION TAKEN: With all in favor, the motion passed.

5. COUNCIL UPDATE

Councilor Robert Liberty updated the committee on:

- Metro recently acquired 5.6 acres along Johnson Creek with funds from the 2006 voter-approved Natural Areas Bond Measure Program;
- A response to a letter co-authored by Metro Council President David Bragdon, Mayor of Portland Sam Adams, Mayor of Vancouver Tim Leavitt, and Clark County Commissioner Steve Stuart on the Columbia River Crossing project was received from the Governors of Washington and Oregon, and there is more information on this in the Oregonian; and
- There will be a Council of Development Finance Agencies meeting on May 13, and Council President Bragdon will be on a panel discussing smart growth solutions.

6. INFORMATION/ DISCUSSION ITEMS

6.1 Integrated Investment Strategy

Ms. Robin McArthur of Metro briefed the committee on the Making the Greatest Place (MGP) key decisions, milestones, and actions for 2010, and clarified MPAC's role in these decisions and actions. In 2010, the MGP initiative will focus on targeting investments to accomplish shared local and regional

goals. Ms. McArthur presented a timeline of these major decisions and actions as well as a timeline of major milestones for the Integrated Investment Strategy.

6.2 Presentation of Report “New Tools and Approaches for Developing Centers and Corridors”

Mr. Andy Shaw of Metro briefed the committee on the “New Tools and Approaches for Developing Centers and Corridors” report drafted by Portland State University’s Institute of Metropolitan Studies on the findings of the Metro-lead Expert Advisory Group (EAG) on Developing Centers and Corridors.

Three members of the EAG, Dennis Wilde of Gerding Edlen Development Company, Steve Burdick of Killian Pacific, and Jerry Johnson of Johnson Reid, presented key findings of the report:

- The value of public-private collaboration on centers and corridors development, building trust between the two parties, and aligning risks and expectations
- The importance of creating a diagnostic tool that can help identify communities’ readiness for development.
- The importance of educating the public and private development communities to ensure that both parties understand the language of development, real estate, and public policy issues and goals.

Councilor Shirley Craddick of Gresham, Mayor Craig Dirksen of Tigard, and Mr. Bob Clay of Portland discussed the barriers and challenges their communities have faced in encouraging centers and corridor development. Barriers identified included difficulty in working effectively with developers, need for infrastructure improvements, funding challenges, and difficulty establishing ownership of development projects by citizens in their communities.

Additional committee discussion included:

- Effectively engaging public and private sectors in center and corridor development
- How to educate the public about development
- Long-term viability of center and corridor developments
- The importance of “storytelling” as way for developers to connect with the public on development.

Project next steps include determining how best to use the report information and continued discussions with PSU and local and regional partners.

7. MPAC MEMBER COMMUNICATIONS

There were none.

8. ADJOURN

Vice Chair Lehan adjourned the meeting at 6:41 pm.

Respectfully submitted,



Sheena VanLeuven
Recording Secretary

ATTACHMENTS TO THE PUBLIC RECORD FOR FEBRUARY 24, 2010:

The following have been included as part of the official public record:

ITEM	DOCUMENT TYPE	DOC DATE	DOCUMENT DESCRIPTION	DOCUMENT No.
	Document	02/24/2010	Revised MPAC 2/24/10 Agenda	022410j-01
6.1	Chart	02/23/2010	MGP 2010 Decisions	022410j-02
6.2	PowerPoint	02/2010	Achieving Sustainable, Compact Development in the Portland Metropolitan Area	022410j-03
6.2	Document	11/2009	Executive Summary: Achieving Sustainable, Compact Development in the Portland Metropolitan Area	022410j-04

MPAC Worksheet

Agenda Item Title: Regional Transportation Plan Proposed Mobility Standards Action Plan

Presenter: Kim Ellis

Contact for this worksheet/presentation: Kim Ellis (x1617)

Council Liaison Sponsor: Rex Burkholder and Rod Park

Purpose of this item (check no more than 2):

Information _____
Update _____
Discussion X
Action _____

MPAC Target Meeting Date: March 10, 2010

Amount of time needed for:

Presentation 10
Discussion 20

Purpose/Objective:

The purpose of this item is to provide direction to staff for moving forward on the proposed approach for addressing state mobility standards.

Action Requested/Outcome:

MPAC support for the proposed action plan is requested. With MPAC and JPACT support, staff will develop revisions to the Regional Transportation Functional Plan with Metro’s technical advisory committees in March and April. Revisions to the Urban Growth Management Functional Plan will be developed by a subcommittee of MTAC as part of the Land Use Capacity Ordinance work that MPAC will discuss later in 2010.

Background and context:

The region is in the final adoption phase for the Regional Transportation Plan (RTP). The new RTP establishes a new outcomes-based framework and includes new policies, tools and actions to guide future planning and investment decisions.

To successfully implement this new approach and support the region’s efforts to create jobs, sustain economic prosperity, use land efficiently and address climate change, the region needs new tools to evaluate and diagnose our transportation system. Existing mobility standards have limited applicability and flexibility under the new outcomes-based RTP:

- **The 2040 Growth Concept vision for land use and transportation must be accelerated to achieve desired outcomes; yet institutional and fiscal barriers exist.** For example, the City of Tigard proposed mixed-use zoning and doubling the height limit in downtown to 8 stories to create more jobs and housing and support a future high capacity transit connection. Due to potential traffic impacts to OR 99W and Hall Boulevard, the City adopted the mixed-use zoning but had to retain the current 4-story height limit to meet state mobility standards.
- **Existing volume-to-capacity-focused mobility standards only tell part of the story.** A more comprehensive framework of measures is needed to define success and guide investments and actions needed to support local implementation of the 2040 Growth Concept vision.

- **Benefits and impacts of different actions are not always fully understood or accounted for.** Current analysis tools are limited in their ability to fully quantify the benefits of individual actions (e.g., timing traffic signals, providing financial incentives and civic infrastructure in downtowns, building sidewalks and bike facilities, etc.). All of these actions will help improve mobility in the region.

The proposed action plan recommends implementation of a more robust set of actions to implement the new RTP and make progress toward the RTP performance targets. The actions being considered will also help communities achieve their 2040 growth aspirations. The transportation actions would be adopted as part of the RTP in June 2010. The land use actions would be adopted as part of the Land Use Capacity Ordinance in December 2010.

The memo also recommends actions for Metro, ODOT and other regional partners to take over the next few years to support the outcomes identified through the *Making the Greatest Place* effort. These actions will result in a more comprehensive approach for implementing the 2040 Growth Concept and meet statewide goals for compact development patterns, mobility and greenhouse gas emissions.

What has changed since MPAC last considered this issue/item?

Two RTP work group meetings were held in February to help develop the proposed action plan. The Transportation Policy Alternatives Committee (TPAC) and Metro Technical Advisory Committee (MTAC) discussed and considered the proposed action plan on February 26 and March 3, 2010, respectively. JPACT discussed and provided direction on the action plan on March 4, 2010. TPAC supported the proposed action plan as presented. Staff will present a summary of MTAC feedback and JPACT’s direction at the meeting.

What packet material do you plan to include?

- **Memo:** Proposed RTP Mobility Standards Action Plan and Link to 2040 Growth Concept Implementation and Efforts to Address Climate Change (dated March 1, 2010).
- **Attachment 1 to Memo:** Best Practices for a Sustainable and Prosperous Metropolitan Region: A Menu of Actions to Achieve the Region’s Desired Outcomes (dated March 1, 2010).

What is the schedule for future consideration of item?

March 15	RTP work group discussion on proposed new transportation actions
March 16	Metro Council discussion on proposed approach and actions
March 22 – May 6, 2010	Final RTP public comment period on final draft RTP and proposed transportation actions
March 26	TPAC discussion to identify refinements to transportation actions
April 7	MTAC discussion to identify refinements to transportation actions
April 30	TPAC discussion to identify refinements to transportation actions
May 2010	MPAC, JPACT and the Metro Council discuss proposed RTP amendments, including regional transportation functional plan revisions
May 12, 2010	Oregon Transportation Commission briefing on action plan
June 9, 2010	MPAC makes recommendation on RTP
June 10, 2010	JPACT and the Metro Council take action on RTP
June 15, 2010	RTP submitted to the Land Conservation and Development Commission in the manner of periodic review
July – December 2010	MPAC and the Metro Council discuss the proposed Land Use Capacity Ordinance and related Urban Growth Management Functional Plan revisions



Date: March 1, 2010
To: MPAC and interested parties
From: Kim Ellis, Principal Transportation Planner
Re: Proposed RTP Mobility Standards Action Plan and Link to 2040 Growth Concept Implementation and Efforts to Address Climate Change

Background and Purpose

The region is in the final adoption phase for the Regional Transportation Plan (RTP). The new RTP establishes a new outcomes-based framework and includes new policies, tools and actions to guide future planning and investment decisions.

To successfully implement this new approach and support the region's efforts to create jobs, sustain economic prosperity, use land efficiently and address climate change, the region needs new tools to evaluate and diagnose our transportation system. Existing volume-to-capacity-focused mobility standards have limited applicability and flexibility under the new outcomes-based RTP:

- **The 2040 Growth Concept vision for land use and transportation must be accelerated to achieve desired outcomes; yet institutional and fiscal barriers exist.** For example, the City of Tigard proposed mixed-use zoning and doubling the height limit in downtown to 8 stories to create more jobs and housing and support a future high capacity transit connection. Due to potential traffic impacts to OR 99W and Hall Boulevard, the City adopted the mixed-use zoning but had to retain the current 4-story height limit to meet state requirements.
- **Existing volume-to-capacity-focused mobility standards only tell part of the story.** A more comprehensive framework of measures is needed to define success and guide investments and actions needed to support local implementation of the 2040 Growth Concept vision.
- **Benefits and impacts of different actions are not always fully understood or accounted for.** Current analysis tools are limited in their ability to fully quantify the benefits of individual actions (e.g., timing traffic signals, providing financial incentives and civic infrastructure in downtowns, building sidewalks and bike facilities, etc.). All of these actions will help improve mobility in the region and support other desired outcomes.

This memo recommends implementation of a more robust set of actions to implement the new RTP and make progress toward the RTP performance targets. The actions being considered will also help communities achieve their 2040 growth aspirations. The transportation actions would be adopted as part of the RTP in June 2010. The land use actions would be adopted as part of the Land Use Capacity Ordinance in December 2010. See **Attachment 1** for a summary of existing required actions and other possible actions to be considered.

The memo also recommends actions for Metro, ODOT and other regional partners to take over the next few years to support the outcomes identified through the *Making the Greatest Place* effort. These actions will result in a more comprehensive approach for implementing the 2040 Growth Concept and meet statewide goals for compact development patterns, mobility and greenhouse gas emissions.

Proposed Action Plan

2010 Recommended Actions

- **Retain current mobility standards**, subject to future refinement. **(June 2010)**
- **Adopt revisions to the Regional Transportation Functional Plan (June 2010) and Urban Growth Management Functional Plan (December 2010)**
Metro's functional plans direct how local governments implement regional policies, recognizing that "one size does not fit all." Any new functional plan actions should allow for flexibility and varying local aspirations, circumstances, and readiness, but ensure regional policies are being implemented consistently through local transportation system plans (TSPs), comprehensive plans and codes. The following revisions are recommended:
 - **Proposed Transportation Functional Plan revisions (June 2010)**
 - Require TSPs, mobility corridor strategies and corridor refinement plans to implement the new RTP policies for system management and operations, bike, pedestrian, transit, safety, freight, and connectivity, consistent with state and federal policies (e.g., Congestion Management Process and Oregon Highway Plan (OHP), Major Improvements Policy 1G).
 - Require TSPs, mobility corridor strategies and corridor refinement plans to include transportation system management and operations (TSMO) strategies and projects, consistent with the regional TSMO plan.
 - Allow local governments to identify alternative approaches to meet mobility standards, as set forth in OHP Policy 1F6, in collaboration with ODOT and Metro, through TSP updates, corridor refinement planning, concept planning or other planning efforts.
 - Allow an automatic 30 percent trip reduction credit for plan amendments in areas that have adopted a minimum level of "best practices" actions.
 - Provide a list of "best practice" actions that will automatically qualify for 30 percent trip reduction credit and other actions that could allow for additional credit if implemented.
 - Clarify RTP amendment process and procedures, including public involvement and notification requirements.
 - **Proposed Urban Growth Management Functional Plan revisions (December 2010)**
 - Require adoption of parking management plans in centers and along high capacity transit corridors.
 - Require adoption of property-line boundaries for 2040 designated land uses through a public process.
 - Require that a mix of land uses be allowed in 2040 centers, mainstreets and along transit corridors.
 - Require limitations on new auto-oriented uses in centers.
 - Require limitations on large-format retail near interchanges, unless allowed by an adopted Interchange Area Management Plan.
- **Adopt multi-modal mobility corridor strategies (June 2010)**
The strategies will define the vision and planned system for each of the region's 24 mobility corridors. The strategies will be tailored for each corridor to support adopted land use plans and corridor function(s) and include management, operations and capital investments to support all modes of travel.
- **Adopt findings (June 2010)**
 - Document the extent of congestion in the region.
 - Demonstrate that the region has "done the best we can" to improve highway performance as much as feasible for purposes of meeting state requirements and OHP Policy 1F5.
 - Allow the RTP State System to serve as the "reasonably likely" system of improvements and "baseline condition" for local governments to use to assess the traffic impacts of plan amendments to determine if a plan amendment has a "significant effect" on state facilities. This requires local government and TriMet concurrence.
 - Document evidence for automatic 30 percent credit for plan amendments.

- **Develop best practices checklist** for determining consistency of local plans with the RTP. **(June 2010)**
- **Request amendments to the Transportation Planning Rule** to define an automatic 30 percent credit for plan amendments in areas that have adopted certain “best practices” actions. **(June 2010)**
- **Request ODOT to engage Metro region** and other MPOs, cities, counties and interested stakeholders in the **mobility standards research** Project #716 that is underway. **(June 2010)**

2011-12 Recommended Actions

- **Metro and regional partners consider development of alternative mobility standards for individual corridors through refinement plans, concept planning and TSP updates.**
- **Metro updates Best Practices in Transportation System Design Toolkits/Livable Streets Handbooks** in collaboration with ODOT and other regional partners.
- **Metro and regional partners continue model enhancements and develop data collection and performance monitoring system**, to better understand the relationship between compact urban form and trip generation and greenhouse gas emissions.
- **Metro and regional partners complete greenhouse gas scenarios planning as required by House Bills 2001 and 2186 (2009 Session) and Senate Bill 1059 (2010 Session)**, and identify implementation recommendations for Metro region.
- **The Oregon Transportation Commission (OTC) works with Metro and other stakeholders to develop and implement a jurisdictional transfer strategy** for regional and district highways, and provide funding to upgrade facilities prior to, or in conjunction with, the transfer of ownership to local governments.
- **The OTC and the Land Conservation and Development Commission (LCDC) work with Metro and other stakeholders conduct a comprehensive and coordinated review and update to the Transportation Planning Rule, Oregon Highway Plan and mobility standards**, and state procedures manuals and guidelines to more fully integrate the Oregon Transportation Plan policies and state greenhouse gas goals.
- **The OTC and LCDC work with Metro and other stakeholders to develop State Greenhouse Reduction Strategy and Toolkit** for local governments.

Next Steps

Successful completion of this work is essential to further the region's efforts to implement the 2040 Growth Concept and achieve local communities' aspirations for focusing more housing and jobs in centers and corridors and supporting jobs and access to the region's industrial and employment areas. These actions will also improve safety and freight reliability, expand the travel choices available in communities throughout the region and support current and future efforts to reduce greenhouse gas emissions.

March 15	RTP work group discussion on proposed new transportation actions
March 16	Metro Council discussion on proposed approach and actions
March 22 – May 6, 2010	Final RTP public comment period
March 26	TPAC discussion to identify refinements to transportation actions
April 7	MTAC discussion to identify refinements to transportation actions
April 30	TPAC discussion to identify refinements to transportation actions
May 2010	MPAC, JPACT and Metro Council discuss proposed RTP amendments and functional plan revisions
May 12, 2010	Oregon Transportation Commission briefing on action plan
June 9, 2010	MPAC makes recommendation on RTP
June 10, 2010	JPACT and the Metro Council take action on RTP
June 15, 2010	RTP and new transportation actions submitted to the Land Conservation and Development Commission in the manner of periodic review for approval
July – December 2010	MPAC and the Metro Council discuss the proposed Land Use Capacity Ordinance and related Urban Growth Management Functional Plan revisions

BEST PRACTICES FOR A SUSTAINABLE AND PROSPEROUS METROPOLITAN REGION

A Menu of Actions to Achieve the Region's Desired Outcomes

EXISTING REQUIRED ACTIONS

VEHICLE

- | | |
|----------------------------------------------------------------------------------------------------------------------------------------------------------------------------|---------------|
| • Housing and job targets for centers | Title 1 |
| • Adopt and map boundaries of 2040 designations in local comp plan/code | Title 1 |
| • Progress reports on center strategy | Title 6 |
| • Limit new large-format retail ¹ in employment areas | Title 4 |
| • Local street connectivity standards in new residential and mixed-use areas | RTFP |
| • Minimum/maximum parking ratios | Title 2 |
| • Pedestrian accessways in parking lots | Title 6; RTFP |
| • Consider transportation demand management (TDM) and transportation system management (TSMO) programs | RTFP |
| • Adopt Non-Single occupancy vehicle (SOV) modal targets and actions to demonstrate progress | RTFP |
| • Allow for implementation of street design guidelines/green streets | RTFP |
| • Building/pedestrian orientation along transit corridors and within pedestrian districts | RTFP |
| • Consider transportation system management and operations (TSMO), bike, pedestrian, transit, safety, and connectivity prior to adding capacity during project development | RTFP |

PROPOSED NEW TRANSPORTATION ACTIONS

- | | |
|---------------------------------------------------------------------------------------------------------------------------------------------------------------------------------------------------------------------------------------------------------------------------------------------------------------------------|---------------|
| • Implement new RTP policies to follow steps in federally-required congestion management process and Oregon Highway Plan Major Improvements Policy 1G during planning (e.g., implement TSMO, bike, pedestrian, transit, safety, and connectivity prior to adding capacity) | RTFP |
| • Adopt parking management strategy in Centers that may include: <ul style="list-style-type: none"> ○ Inventory of usage ○ Timed parking ○ Real-time parking information ○ Priced parking | Title 6; RTFP |
| • Implement TSMO strategies in Centers and Corridors, consistent with regional TSMO plan, that may include: <ul style="list-style-type: none"> ○ Signal timing ○ Transit priority treatments at intersections ○ Limit parking near intersections ○ Arterial corridor management | RTFP; Title 6 |

¹ Greater than 60,000 square feet in size.

PROPOSED NEW LAND USE ACTIONS

VEHICLE

- | | |
|------------------------------------------------------------------------------------------|----------------|
| • Adopt parcel-based 2040 design type boundaries in local plans through a public process | Title 1 |
| • Allow for mix of land uses in Centers, Corridors | Title 6 |
| • Limit new auto-oriented uses in Centers ² | Title 6 |
| • Limit new large-format retail development near freeway interchanges | Titles 4 and 6 |

OTHER POSSIBLE ACTIONS

- | | |
|------------------------------------------------------------------------------------------------------------------------------------------------------------------------------------------------------------------------------------------------------------------------------------------|------------------------|
| • Implement new RTP policies to follow steps in federally-required congestion management process and Oregon Highway Plan Major Improvements Policy 1G during project prioritization (e.g., implement TSMO, bike, pedestrian, transit, safety, and connectivity prior to adding capacity) | RTFP |
| • Complete streets | RTFP |
| • Arterial connectivity | RTFP |
| • Sidewalk and bicycle connectivity in Centers, Corridors and to transit stops | Title 6; RTFP |
| • Bicycle/pedestrian orientation in Centers | RTFP |
| • Freight access in centers/delivery areas | Title 6 |
| • Adopt plan and zoning consistent with 2040 designation | Title 4, Title 6 |
| • Financial and other incentives to support revitalization/redevelopment/infill in Centers and Corridors | Title 6 |
| • Minimum development thresholds within specified distance of high capacity transit (HCT) stations, streetcar stops and frequent-service bus stops | Title 6 |
| • Civic infrastructure ³ in Centers | Title 6 |
| • Bike parking at transit stops in Centers, Corridors, Station Communities | RTFP |
| • Expanded TDM programs in Centers, and in areas within certain proximity to station areas, HCT, Frequent Bus and Streetcar | RTFP; Title 6 |
| • Employer-administered TDM programs | RTFP; Title 6; Title 4 |
| • Higher non-SOV modal targets in Centers | RTFP |
| • Include other RTP targets | RTFP |

² Limit scale (drive-ins; service stations; auto dealerships; etc.)

³ Includes schools, hospitals, universities, government buildings

MPAC Worksheet

Agenda Item Title: Performance Measures and the Greater Portland Indicators

Presenters:

- Sheila Martin, Director, Institute for Metropolitan Studies, PSU
- Chris Deffebach, Long Range Planning Manager, Metro
- Rita Conrad, Project Director, Greater Portland Indicators, Metro

Contact for this worksheet/presentation: Rita Conrad, x7572, rita.conrad@oregonmetro.gov

Council Liaison Sponsor: Mike Hoglund

Purpose of this item (check no more than 2):

Information	x
Update	_____
Discussion	x
Action	_____

MPAC Target Meeting Date: 3-10-10

Amount of time needed for:

Presentation	15
Discussion	15

Purpose/Objective:

Offer information to and receive feedback from MPAC members on the relationship between *Making the Greatest Place (MGP)* performance measures and how they fit into the Greater Portland Indicators project. The Greater Portland Indicators project is a collaborative effort with PSU's Institute of Metropolitan Studies, United Way, the City of Portland, Multnomah, Clackamas, Washington and Clark Counties, Portland Development Commission, Greenlight Greater Portland, Portland + Oregon Sustainability Institute and a growing list of other partners.

Action Requested/Outcome:

- MPAC members see how *MGP* performance measures fit into the Greater Portland Indicators project.
- MPAC members offer leadership and support for the broader Greater Portland Indicators project, encouraging their communities and staff to engage.

Background and context:

On October 14, MPAC expressed a desire to expand the scope of *MGP* performance measures, requesting additional measures for *environmental, social and economic* well-being. The Greater Portland Indicators project, by definition, will embrace that expanded scope. This can allow Metro staff to concentrate its scarce resources on growth management (land use and transportation) performance measures.

What has changed since MPAC last considered this issue/item?

- *Making the Greatest Place* staff has coordinated performance measures efforts with the Greater Portland Indicators project to reduce duplication of effort and maximize leverage.
- *The Greater Portland Indicators* project now has an 80%-time project manager (Metro Council Ordinance 09-1228). A Kick-off event occurred on January 14th, co-hosted by PSU President Wim Wiewel and United Way Director Marc Levy. Mayor Adams, Chair Ted Wheeler and President David Bragdon offered remarks. Over 60 attended including leaders from eight cities, four counties and two states. At the present time a high-level Advisory Committee of local elected, business and community leaders is being formed to guide the development of this project through the summer of 2011.

What packet material do you plan to include?

- Brochure, attached.

(There will be a short slide presentation and one 11x17 color handout. We will bring those hard copies on March 10.)

What is the schedule for future consideration of item:

A presentation on the Greater Portland Indicators project was made to Metro Council on January 26. Similar presentations are scheduled for:

- MPAC: 3/10
- MTAC: 3/17
- TPAC: 3/26
- JPACT: 4/8

Greater Portland Indicators

Transforming Regional Data into Action

Why Greater Portland Indicators?

Cities and counties in Greater Portland are bound together by the air we breathe; the land we build and play on; the water we drink; the roads we travel; businesses, goods and services that drive prosperity; and most importantly, by people who live, work and play throughout the region. Because of this connectedness, when something good or bad happens in one part of the region, it almost always impacts the wellbeing of other parts and the region as a whole.

We believe that Greater Portland Indicators can provide a shared lens to track these ups and downs of the whole region - socially, economically and environmentally - and a common language to help communities collaborate across boundaries to conserve and expand their strengths, diagnose and overcome their challenges and as a result, build a stronger and more vital metropolitan area overall.

This project is about more than creating a collection of cool indicators, great data and a slick, interactive website. It is about:

- **Choosing indicators**, a political and strategic process. What are the goals of communities and organizations across the region? How are they measuring progress? How can we leverage these efforts to form a collective vision, goals and regional indicators of progress?
- **Measuring indicators**, a technical process. How can we gather and report the data with clarity, accuracy, reliability and validity - without having to spend a lot of extra money?
- **Using indicators**, a communications and results management process. How can we best share the data, learn from each other the meaning *behind* the data and co-create the most effective paths forward? How can we use the data to drive better results and accountability?

Co-create this project with us!

We want this 12-18 month project to yield products and services that leaders, partners and communities will use *every day* for public dialogue, planning, continuous learning and policy making at all levels. This means that the design process will require the input and active participation of partners and potential users from throughout the region. We invite you to join us.

PROJECT PARTNERS

We welcome additional partners!

- Clark County
- Clackamas County
- Greenlight Greater Portland
- Metro
- Multnomah County
- The City of Portland
- Portland State University
- United Way of the Columbia-Willamette
- POSI (Portland + Oregon Sustainability Institute)
- Portland Development Commission

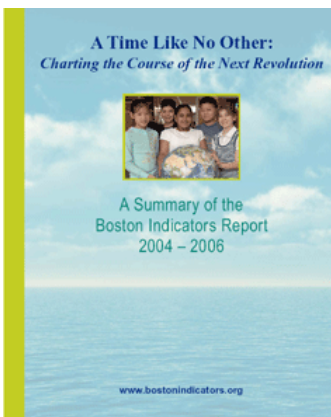
CONTACT US

Rita Conrad
Regional Indicators Project Director
503-813-7572
rita.conrad@oregonmetro.gov

Sheila Martin
Director, Institute of Portland
Metropolitan Studies, PSU
503-725-5170
sheilam@pdx.edu

Mike Hogleund
Director, Metro Research Center
503-797-1743
mike.hogleund@oregonmetro.gov

Four Examples of Regional Indicator Projects



The Boston Indicators Project reports on indicators for **civic vitality, cultural life and the arts, economy, education, environment and energy, health, housing, public safety, technology and transportation**. Supported by the Boston Community Foundation, it includes sector crosscuts for neighborhoods, children and youth, competitive edge, fiscal health, race and ethnicity and sustainable development. <http://www.bostonindicators.org/IndicatorsProject/>

Cascadia Scorecard offers basic scorecard trends for **health, population, economy, sprawl, wildlife and energy and pollution**. The scorecard is a product of Sightline Institute with support from the Boeing Company. <http://scorecard.sightline.org/summary.html>



Silicon Valley Index is the principal analytical tool of the Joint Venture Silicon Valley Network. Supported by the Silicon Valley Community Foundation, this project holds an annual State of the Valley Conference where they release the *Index* every February. The index is a composite of 40 indicators for **people, economy, society, place and governance**. <http://www.jointventure.org/publicatons/siliconvalleyindex.html>



Twin Cities Compass promotes the region's well-being by measuring progress, reporting findings and providing strategies for action. It is led by Wilder Research in partnership with community-serving organizations, funders and volunteers. The project reports data for indicators in **civic engagement, early childhood, economy and workforce, education, environment, health, housing, public safety and transportation**. <http://www.tccompass.org/>

Possible Indicator Categories for the Project

Education,

learning that leads to opportunities and benefits for both individuals and the broader community

Quality Housing and Communities,

the home foundation from which we thrive

Economic Opportunity,

assets and opportunities that foster economic well-being

Healthy People,

our physical, mental, emotional and spiritual well-being

Healthy, Natural Environment,

care of the resource base upon which all life depends

Arts, Culture and Creativity,

enjoying and interpreting the human experience

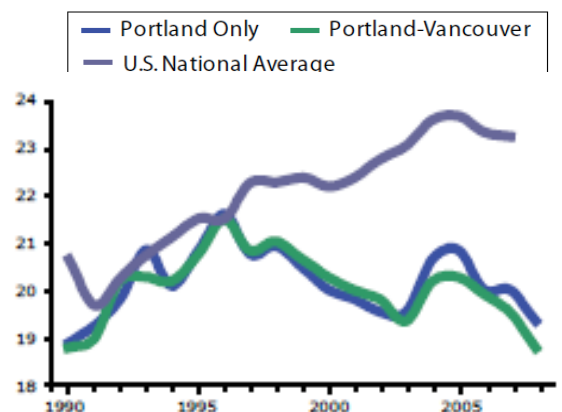
Access and Mobility,

real and virtual connections that help us succeed

Civic Engagement and Connections,

the social infrastructure that makes a community work and residents feel safe

Daily VMT Per Capita, Portland MSA



Source: Metro

MPAC Worksheet

Agenda Item Title: Regional Climate Action Plan

Presenter: Mike Hoglund, Research Director

Contact for this worksheet/presentation: Kim Ellis (x1617)

Council Liaison Sponsor: n/a

Purpose of this item (check no more than 2):

Information	<u> X </u>
Update	<u> </u>
Discussion	<u> X </u>
Action	<u> </u>

MPAC Target Meeting Date: March 10, 2010

Amount of time needed for:

Presentation	<u> 15 </u>
Discussion	<u> 15 </u>

Purpose/Objective:

The purpose of this item is to prepare MPAC for an April 2 climate change retreat with the Joint Policy Advisory Committee on Transportation (JPACT). Staff will provide an overview of Metro’s climate change activities, share data from the regional greenhouse gas emissions inventory and present an overview of state greenhouse gas emissions mandates.

Action Requested/Outcome:

Shared awareness of the region’s primary sources of greenhouse emissions and state mandates that will direct the upcoming greenhouse gas scenarios planning effort.

Background and context:

In 2007, the Legislature established statewide targets for greenhouse gas emissions (GHGs).

In 2009, the Legislature passed House Bill 2001, directing Metro to “develop two or more alternative land use and transportation scenarios” by January 2012 that are designed to reduce greenhouse gas emissions from light-duty vehicles.

The 2009 Legislature also established the Metropolitan Planning Organization Greenhouse Gas Emissions Task Force through House Bill 2186. The task force’s recommendations were approved by the 2010 Legislature as part of Senate Bill 1059. Senate Bill 1059 provides further direction to greenhouse gas scenario planning in the other Oregon MPOs and the Metro region.¹ It also calls for a statewide GHG emission reduction strategy for the light-duty vehicle emissions sector; and calls for the state to develop a toolkit of emission reductions actions.

In 2008, the region examined a number of scenarios during the Making the Greatest Place process intended to best meet six regional outcomes, including minimizing contributions to global warming. Those scenarios provide a baseline for further work but did not demonstrate the necessary emission reductions to meet the long-term state and regional targets.

¹ For more information on House Bill 2186 and the Task Force recommendations, go to <http://www.oregon.gov/ODOT/TD/TP/HB2186.shtml>.

In 2009, the region approved an updated RTP that establishes appropriate and timely policy direction by putting GHG reduction directly into the plan rather than waiting for a federal mandate, and it allows the region to begin work to address requirements set out in House Bill 2001 by the 2009 Legislature.

There is no silver bullet, but the region can build on past successes. In general, the Portland region is leading the United States in reducing transportation-related GHGs. Vehicle miles traveled (VMT) per capita have been declining, transit and bike mode shares are increasing, and shorter trips have resulted due to compact, mixed-use urban form. National studies, research in California and the Puget Sound region and other scenario planning efforts have shown that compact urban form coupled with expanded travel choices, user fees, and technology will reduce transportation-related carbon emissions. These strategies are recommended by the 2035 Regional Transportation Plan (RTP), and will be further tested through the scenarios.

What has changed since MPAC last considered this issue/item?

This is a new informational item.

What packet material do you plan to include?

- **Memo:** House Bills 2001 and 2186 Greenhouse Gas Scenario Mandates (dated March 1, 2010).

What is the schedule for future consideration of item?

April 2	Joint MPAC/JPACT retreat on climate change
April/May	Greenhouse Gas Procedures Manual presented to JPACT and MPAC
April 2010	Metro technical advisory committees provide input on draft work program
May 2010	MPAC, JPACT and the Metro Council discuss proposed greenhouse gas scenarios work program
June 2010	MPAC, JPACT and the Metro Council take action on proposed greenhouse gas scenarios work program



Date: March 1, 2010
To: MPAC and interested parties
From: Mike Hogle, Research Director
Kim Ellis, Principal Transportation Planner
Re: House Bills 2001 and 2186 Greenhouse Gas Scenario Mandates

BACKGROUND

This memo provides an overview of the state, federal and regional context guiding future scenario planning work in the Portland region. A detailed work program is being developed for input in the coming months.

State and Federal context

In 2007, the Legislature established statewide targets for greenhouse gas emissions (GHGs) – calling for stopping increases in emissions by 2010; 10 percent reduction below 1990 levels by 2020 and a 75 percent reduction below 1990 levels by 2050. The targets apply to all emission sectors, including energy production, buildings, solid waste and transportation.

In 2009, the Legislature passed House Bill 2001, directing Metro to “develop two or more alternative land use and transportation scenarios” by January 2012 that are designed to reduce greenhouse gas emissions from light-duty vehicles. Sections 37 and 38 of House Bill 2001 are intended to ensure statewide targets for GHG emissions are being addressed in metropolitan transportation plans and regional and local land use plans. House Bill 2001 also calls for LCDC rulemaking in 2011 to establish a specific Metro-area target for the transportation-related emissions sector. The region’s LCDC established target will take into account all sectors of CO₂ emissions for all parts of the state. A report on the Metro-region scenarios is due to the Oregon Legislature by February, 2012. House Bill 2001 also requires Metro to adopt one scenario that meets the state targets after public review and comment. Finally, it requires local governments to adopt comprehensive plan and land use regulations consistent with the adopted scenario.¹

The 2009 Legislature also established the Metropolitan Planning Organization Greenhouse Gas Emissions Task Force through House Bill 2186. The task force’s recommendations were approved by 2010 Legislature as part of Senate Bill 1059. Senate Bill 1059 provides further direction to greenhouse gas scenario planning in the other Oregon MPOs and the Metro region.² It also calls for a statewide GHG emission reduction strategy for the light-duty vehicle emissions sector; and calls for the state to develop a toolkit of emission reductions actions.

Federal climate legislation, with targets and commensurate planning requirements to mitigate GHG emissions remain pending in Congress.

¹ For more information on House Bill 2001, go to http://www.oregon.gov/ODOT/JTA_overview.shtml.

² For more information on House Bill 2186 and the Task Force recommendations, go to <http://www.oregon.gov/ODOT/TD/TP/HB2186.shtml>.

Regional context

In 2008, the region examined a number of scenarios during the Making the Greatest Place process intended to best meet six regional outcomes, including minimizing contributions to global warming. Those scenarios provide a baseline for further work but did not demonstrate the necessary emission reductions to meet the long-term state and regional targets.

In 2009, the region approved an updated RTP that establishes appropriate and timely policy direction by putting GHG reduction directly into the plan rather than waiting for a federal mandate, and it allows the region to begin work to address requirements set out in House Bill 2001 by the 2009 Legislature.

There is no silver bullet, but the region can build on past successes. In general, the Portland region is leading the United States in reducing transportation-related GHGs. Vehicle miles traveled (VMT) per capita have been declining, transit and bike mode shares are increasing, and shorter trips have resulted due to compact, mixed-use urban form. National studies, research in California and the Puget Sound region and other scenario planning efforts have shown that compact urban form coupled with expanded travel choices, user fees, and technology will reduce transportation-related carbon emissions. These strategies are recommended by the 2035 Regional Transportation Plan (RTP), and will be further tested through the scenarios.

In order to meet state goals and the region's broader set of desired outcomes, Metro's greenhouse gas scenario planning work will be guided by the following principles:

- **Regional collaboration and partnerships.** Addressing the climate change challenge will take a regional approach and partnerships in the public and private sectors, requiring meaningful policy and investment discussions with elected leaders, stakeholders and the public. It is only by working together and combining resources that we can hope to make real progress and be successful.
- **Healthy environment and healthy economy.** Environmental health and economic vitality are not mutually exclusive -- with strategic planning, innovation and investment, the region can achieve both desired outcomes.
- **Continued leadership on the integration of land use and transportation.** National studies continue to show that a compact urban form coupled with expanded travel choices as key to reducing greenhouse gas emissions. Land-use and transportation policy-makers must work together to provide leadership and commit to strategies that will enhance this integration at the local, regional and state levels.
- **Build on past successes and innovation.** The scenarios analysis will build on the innovative policy and technical work from the *Making the Greatest Place* initiative, the Regional Transportation Plan update and local efforts to implement the 2040 Growth Concept. Scenarios will be based on agreed-upon assumptions for land use and development patterns, transportation, user fees and technological advancements related to vehicle fleets and fuels.
- **Better tools for complex decisions.** Appropriate baseline data and enhanced analysis tools will be developed to better understand which strategies are most effective and the benefits and impacts of different strategies on reducing carbon emissions and achieving other desired outcomes.

A general timeline and work program that identify major deliverables and decision points for this effort are provided for reference. A more detailed work program is being developed for further input in the coming months.

OVERVIEW OF DRAFT METRO REGION GAS SCENARIO PLANNING WORK PROGRAM

Phase I – Scoping January – June 2010

Develop an overall scope of work and budget, refined timeline, project management and oversight processes, outreach and communication structures, governance structure, and inter-governmental agreements to complete the work.

Phase II – Research January – December 2010

Develop and enhance transportation, land use, and GHG forecasting models. Finalize baseline GHG inventory. Publish climate change background report(s). Establish policy basis for new tools, such as parking pricing, tolling and other strategies. Initiate public/stakeholder outreach.

Phase III – Scenario Development May – December 2010

Work with stakeholders to develop evaluation criteria and two scenarios intended to meet transportation-sector GHG targets. Continue public/stakeholder outreach.

Phase IV – Scenario Evaluation January – September 2011

Work with DLCD staff and other stakeholders to develop a recommended transportation-related GHG emissions reduction target. LCDC will adopt target in June 2011. Evaluate a baseline and two scenarios against criteria and refine scenarios, if necessary, to meet LCDC-adopted GHG targets.

Phase V - Public Review Process October – December 2011

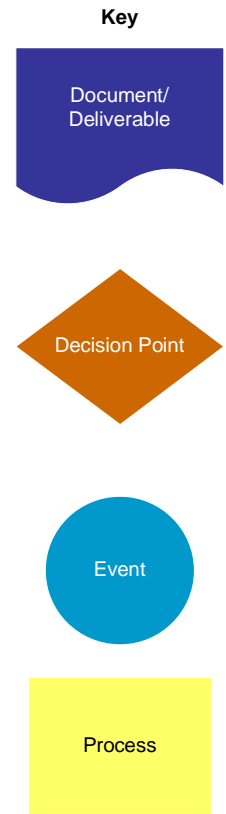
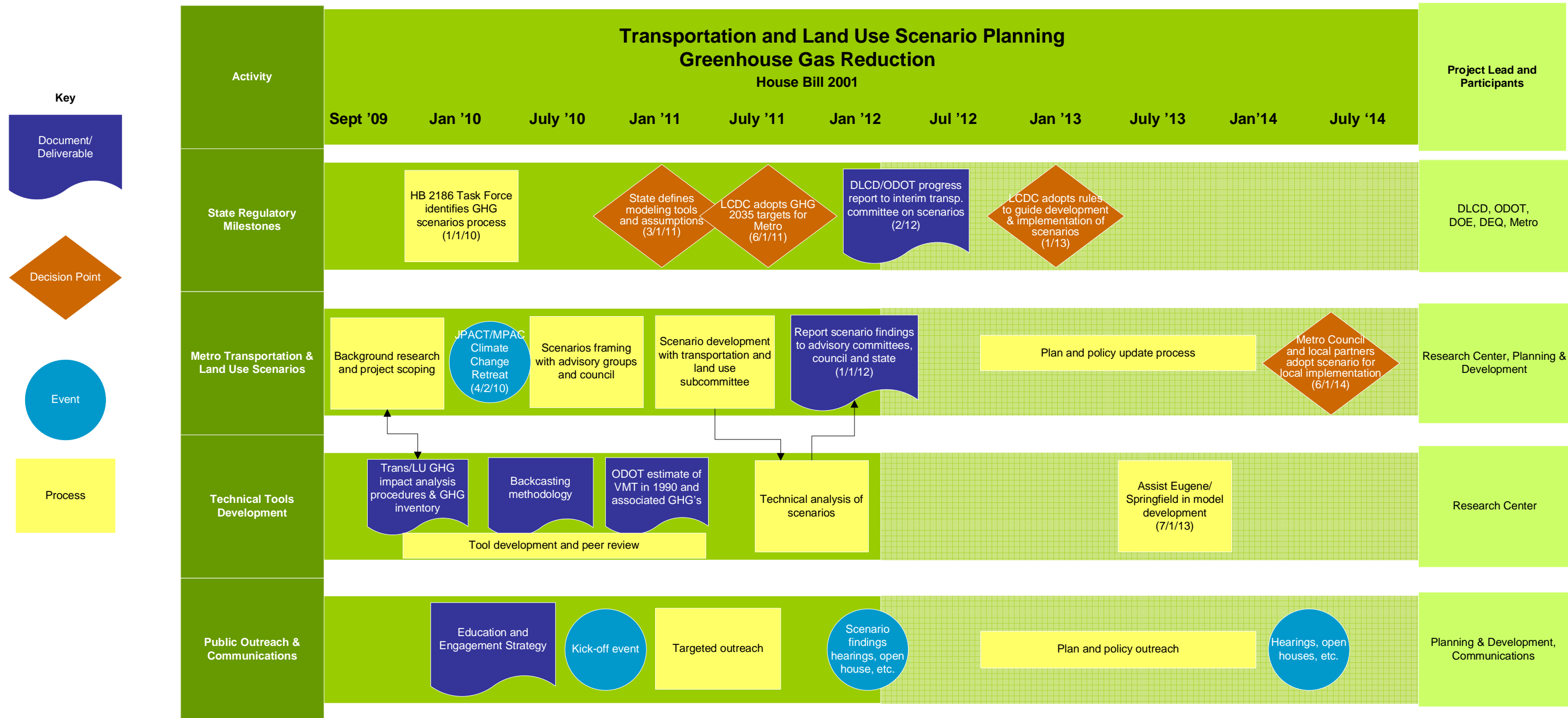
Report on scenarios as defined in public/stakeholder outreach plan. Public review process results in a public comment report and accompanying transmittal to forward to the Oregon Legislature.

Phase VI – Scenario Selection January – September 2012

Provide a report to the 2012 Legislature on scenarios results and policy implications. Consider public comments and select preferred scenario to forward to next RTP. Initiate next RTP update in June 2012.

Phase VII – Regional and Local Implementation September 2012 - 2014

Incorporate preferred scenario into Regional Transportation Plan as part of RTP update. Identify local and regional actions needed to implement preferred scenario. Begin local plan updates and regional implementation.



Project Objective: House Bill 2001 Sec. 37 requires metropolitan service districts to develop land use and transportation scenarios designed to reduce greenhouse gas emissions from certain vehicles.

Materials following this page were distributed at the meeting.

Metro | Agenda

Meeting: Metro Policy Advisory Committee (MPAC)
Date: Wednesday, March 10, 2010
Time: 5 to 7 p.m.
Place: Council Chambers

REVISED

5 PM	1.	<u>CALL TO ORDER</u>	Shane Bemis Chair
5:02 PM	2.	<u>SELF INTRODUCTIONS & COMMUNICATIONS</u>	Shane Bemis, Chair
5:05 PM	3.	<u>CITIZEN COMMUNICATIONS ON NON-AGENDA ITEMS</u>	
5:10 PM	4.	* Consideration of the MPAC Minutes for February 24, 2010 # MTAC Member Nominations	Shane Bemis, Chair
5:15 PM	5.	<u>COUNCIL UPDATE</u>	
	6.	<u>INFORMATION / DISCUSSION</u>	
5:20 PM	6.1	* Regional Transportation Plan Proposed Mobility Standards Action Plan – <u>DISCUSSION</u>	Kim Ellis
5:50 PM	6.2	* Performance Measures and the Greater Portland Indicators – <u>DISCUSSION</u>	Christina Deffebach Sheila Martin, PSU
6:20 PM	6.3	Climate Action Plan – <u>DISCUSSION</u> * • Overview of Metro Climate Activities # • Metro Area Greenhouse Gas Inventory * • State Greenhouse Gas Scenarios Mandates * • Metro Scenario Planning and Climate Change Toolbox * • Joint MPAC/JPACT Retreat Preparation	Mike Hoglund
6:50 PM	7.	<u>MPAC MEMBER COMMUNICATION</u>	
7 PM	8.	<u>ADJOURN</u>	Shane Bemis, Chair

Upcoming meetings and events:

1. Joint MPAC/JPACT retreat on climate change scheduled for Friday, April 2, 2010 from 8 a.m. to 12:30 p.m. at the Oregon Convention Center, Rm. F150-151.
2. Regular MPAC meeting scheduled for Wednesday, April 14, 2010 from 5 to 7 p.m. at the Metro Regional Center, Council Chamber.
3. Regular MPAC meeting scheduled for Wednesday, April 28, 2010 from 5 to 7 p.m. at the Metro Regional Center, Council Chamber.

* Material available electronically.

** Materials will be distributed electronically prior to the meeting.

Material provided at meeting.

All material will be available at the meeting.

For agenda and schedule information, call Kelsey Newell at 503-797-1916, e-mail: kelsey.newell@oregonmetro.gov.
To check on closure or cancellations during inclement weather please call 503-797-1700x.



Date: March 3, 2010

To: Metro Policy Advisory Committee

From: Robin McArthur, AICP
Planning & Development Director

Re: *MTAC Nominees for MPAC Approval*

Per MPAC bylaws Article IV, Section C, applicable to the Metro Technical Advisory Committee, “each jurisdiction or organization named shall annually notify MPAC of their nomination. MPAC may approve or reject any nomination. Revision of the membership of MTAC may occur consistent with MPAC bylaw amendment procedures...”

The Washington County CPO has nominated Terri Wilson to be their representative and Bruce Bartlett to be their alternate.

The Coalition for a Livable Future has nominated Ramsay Weit, Community Housing Fund, to be the Affordable Housing Advocacy Organization representative.

Please consider these nominations for your approval.

If you have any questions or comments, please do not hesitate to contact me.

Thank you.



Date: March 10, 2010

To: Metro Policy Advisory Committee

From: Robin McArthur, AICP
Planning & Development Director

Re: *MTAC Nominees for MPAC Approval*

Per MPAC bylaws Article IV, Section C, applicable to the Metro Technical Advisory Committee, "each jurisdiction or organization named shall annually notify MPAC of their nomination. MPAC may approve or reject any nomination. Revision of the membership of MTAC may occur consistent with MPAC bylaw amendment procedures..."

TriMet has nominated Jessica Tump to be their new primary member and Alan Lehto as the alternate for TriMet's seat on the Metro Technical Advisory Committee.

Please consider this nomination for your approval.

If you have any questions or comments, do not hesitate to contact me.

Thank you.

Regional Transportation Plan



Proposed Action Plan

Moving from policy to implementation

presented by Kim Ellis, RTP project manager

www.oregonmetro.gov/rtp

 Metro | *People places. Open spaces.*

1

Case for Change



- Outcomes-based RTP provides a new framework
- Current mobility standards focus on vehicles, not moving people and goods
- Broader set of measures needed to define success
- New challenges and policies call for new actions and collaboration

2

Proposed New Transportation Actions

To be adopted in local plans and codes, mobility strategies and corridor refinement plans

- Implement **management and operations** and **multi-modal policies**
- Implement **system management strategies**, consistent with regional plan
- Adopt **parking management plans** in centers and along high capacity transit corridors

3

Proposed New Land Use Actions

To be adopted in local plans and codes, mobility strategies and corridor refinement plans

- **Adopt boundaries** for 2040 design types
- **Allow a mix of uses** in centers, main streets and along transit corridors
- **Limit new auto-oriented uses** in centers
- **Limit new large-format retail** near interchanges, unless allowed by a management plan

4

Proposed State Actions

- ODOT engages Metro region and stakeholders in mobility research
- Develop jurisdictional transfer strategy and provide funding
- Revamp state plans, standards, criteria, procedures and guidelines
- Develop State greenhouse gas reduction strategy and toolkit



5

MTAC and TPAC Comments



- Support overall approach
- More refinement of actions needed
- Document trip reduction benefits of actions
- Provide guidance and technical assistance for TSP updates
- Pursue updates to state policy with OTC and LCDC; maintain focus after 2010 actions

6

Direction needed



- Do you support the approach?
- Do you have other direction you would like to provide staff?

**Greater Portland Indicators and
*Making the Greatest Place***

MPAC Presentation
March 10, 2010
by
Sheila Martin, Director, Institute for Metropolitan Studies,
PSU
Rita Conrad, Project Manager, Greater Portland Indicators,
Metro
Chris Deffebach, Planning Manager, Metro

1 *Robin*

Overview


Greater Portland Indicators - Sheila Martin & Rita
Conrad
Making the Greatest Place - Chris Deffebach

2 *Robin*

GOALS

Greater Portland Indicators

1. **Deeper collective understanding** of the Metro area's *environmental, social and economic* progress
2. **Improved *environmental, social and economic well-being*** through partner collaboration and the use of sound data
3. **User-friendly, efficient, and effective measurement system** adaptable for many purposes and multiple audiences.
4. **Alignment and linkage**, where appropriate, among partners' measurement systems

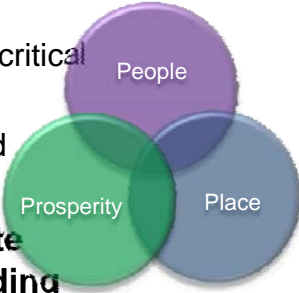


3 Greater Portland Indicators Sheila

PSU Partnership

Greater Portland Indicators

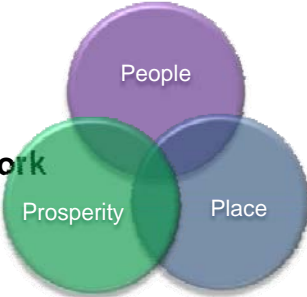
- **Regional indicators are mission critical**
 - Gathering and disseminating information
 - Convening regional partners in a neutral setting
 - Stimulating dialogue and action on critical issues
 - Promoting regional approaches and partnerships
- **Regional indicators can stimulate deeper research and understanding**



4 Greater Portland Indicators Sheila

HISTORY




Greater Portland Indicators



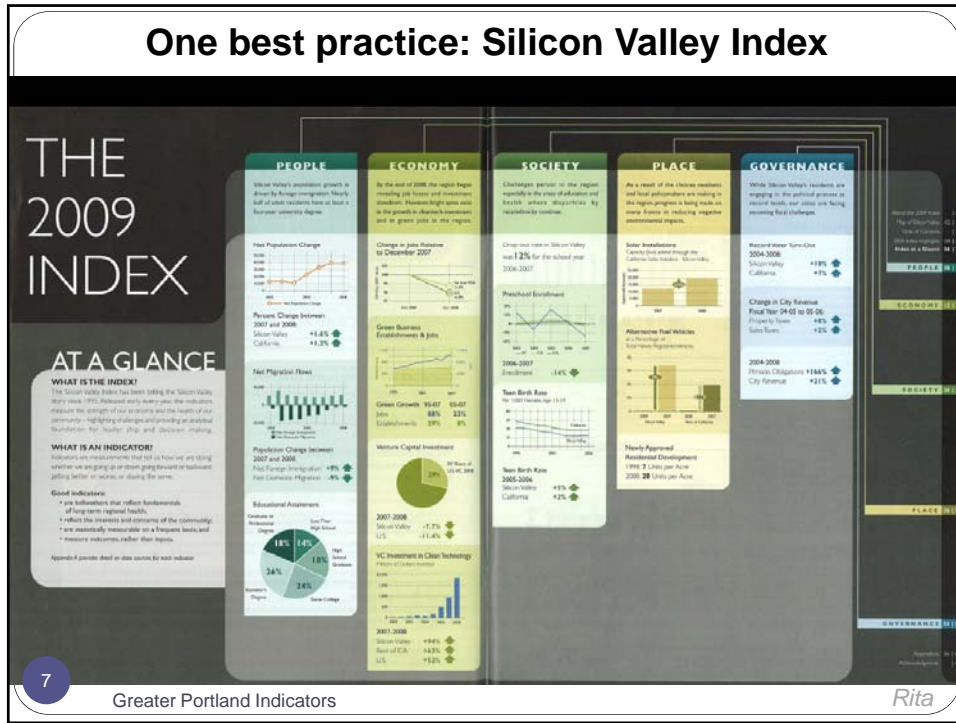
- **2009: Regional Indicators ad hoc work group**
 - Formed by PSU & Metro
 - Reviewed best practices
 - Developed prototype framework & indicators
- **November 2009: Metro Council passed Ordinance 09-1228**
 - Committing resources for a project manager
- **January 2010: Regional Indicators Kick-off**
 - Hosts: PSU President Wim Wiewel and United Way Director Marc Levy
 - Speakers: Sam Adams, Ted Wheeler, David Bragdon
 - Attendees: Over 60, including elected, business and other community leaders from 8 cities, 4 counties, 2 states,

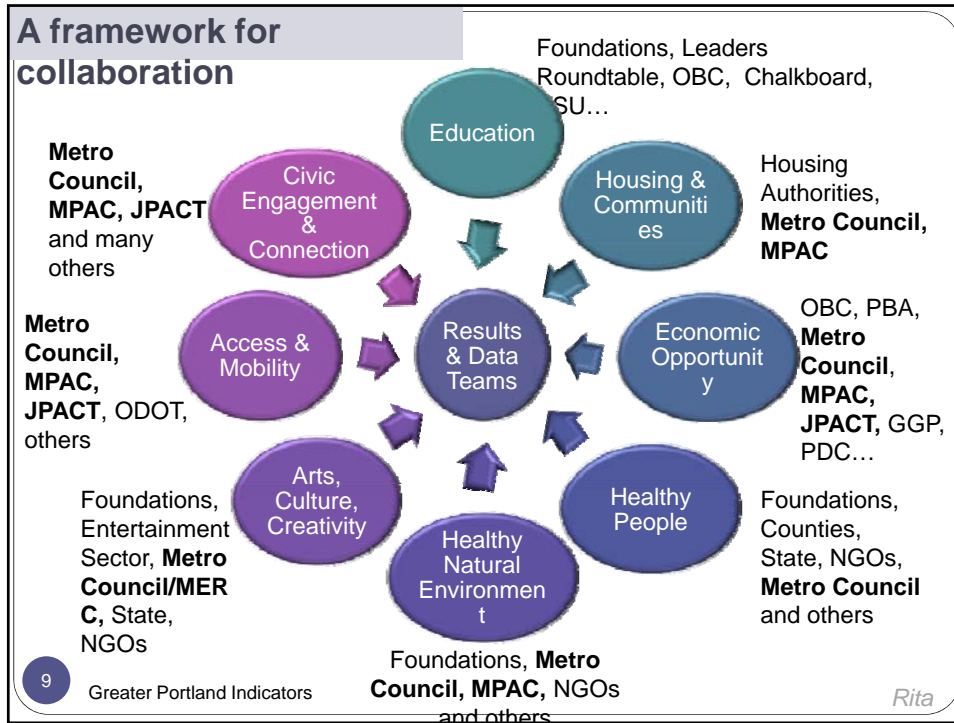
5
Greater Portland Indicators
Sheila

What Kick-off participants said

1. **Shared Vision**
 - “It’s great to have data, but if there is not a goal or shared vision for it, why study it?”
2. **Shared Data**
 - “Let’s not reinvent the wheel. We need to coordinate and consolidate instead of recreate.”
3. **Collaboration**
 - “Use indicators to promote collaboration. It blows me away that Twin Cities does revenue sharing.”

6
Greater Portland Indicators
Sheila

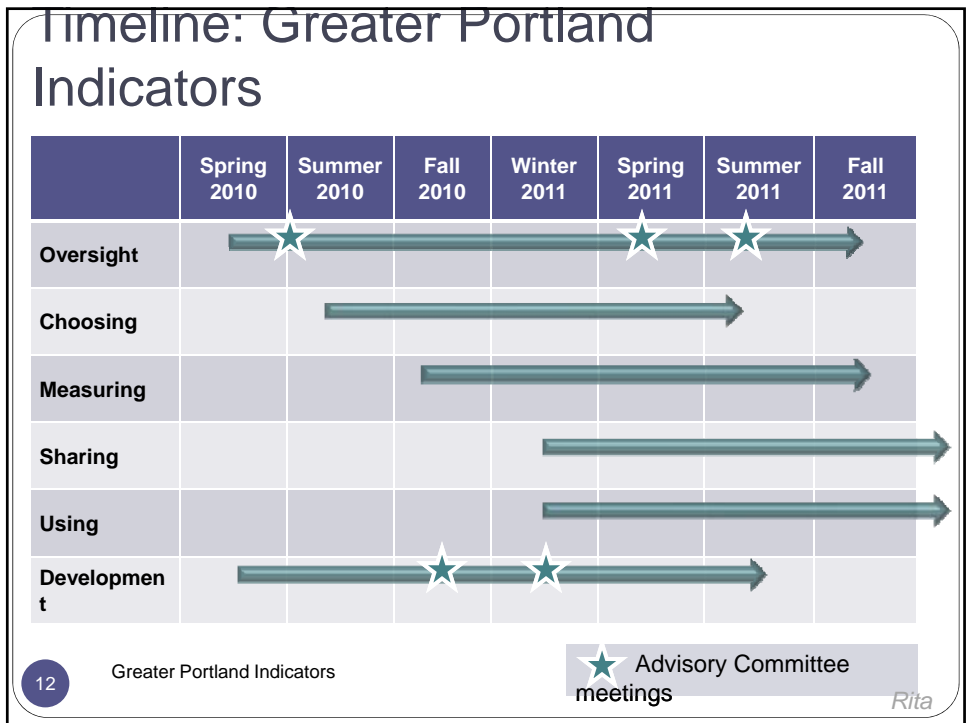
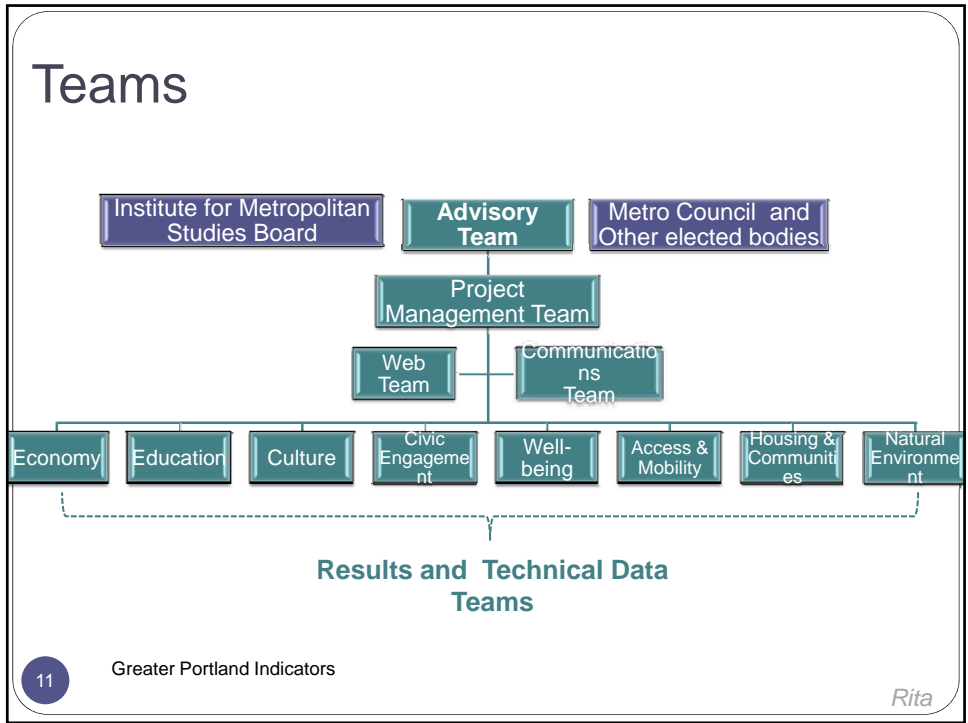




Phases

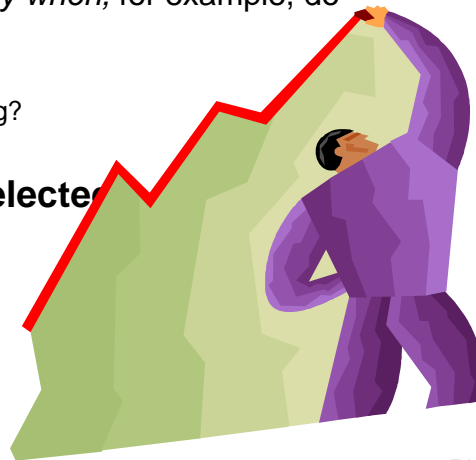
- **Choosing Indicators** –a political process
- **Measuring Indicators** – a technical process
- **Using Indicators** – a communications and results management process

10 Greater Portland Indicators Rita



Setting Targets = Setting Policy

- **Target: a line in the sand**
 - *Exactly how much and by when, for example, do we want to*
 - reduce emissions?
 - improve third grade reading?
 - expand green space?
- **Targets: best set by elected officials**



13

Greater Portland Indicators

Rita

MPAC Roles

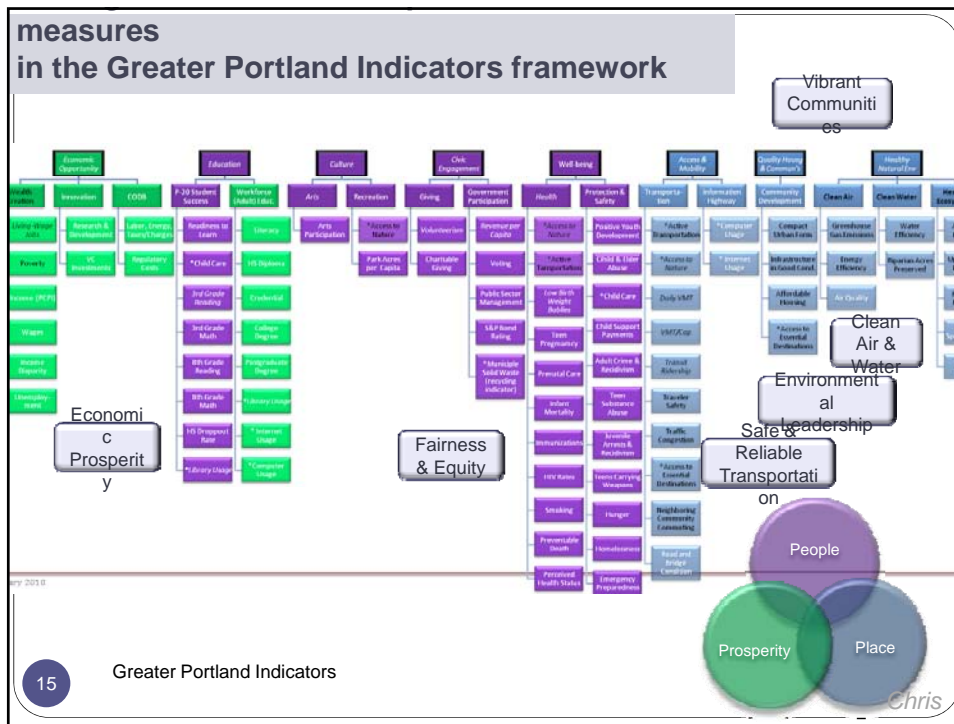
- **As MPAC members**
 - *Advise Metro Council for Making the Greatest Place indicator*
- **As local elected officials**
 - *Help set targets for Greater Portland Indicators (including those for health, education and public safety).*
 - *Consult with partners on the broader framework*
 - *Ensure effective participation by all partners in each of the major sectors (economy, education, health)*



14


Greater Portland Indicators

Rita



Discussion

- Do you agree with integrating *Making the Greatest Place* performance measures with the Greater Portland Indicators project?
- What role would MPAC like in the Greater Portland Indicators effort- as a committee and as individual elected officials?



16 Greater Portland Indicators

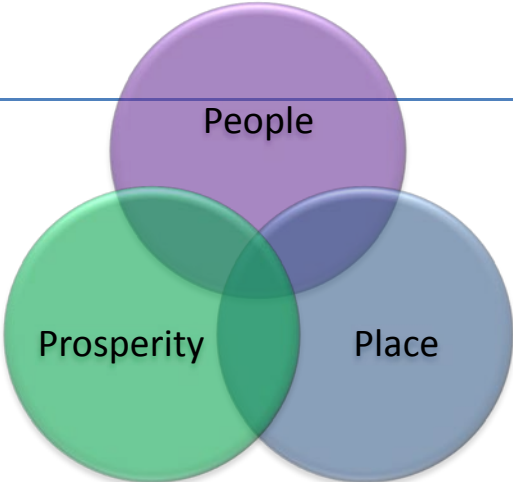
Regional Indicators – MOCKUP of a Conceptual Framework

Black Font = from a Metro indicator set: Making the Greatest Place, Nature in Neighborhoods or Transportation System Monitoring indicators

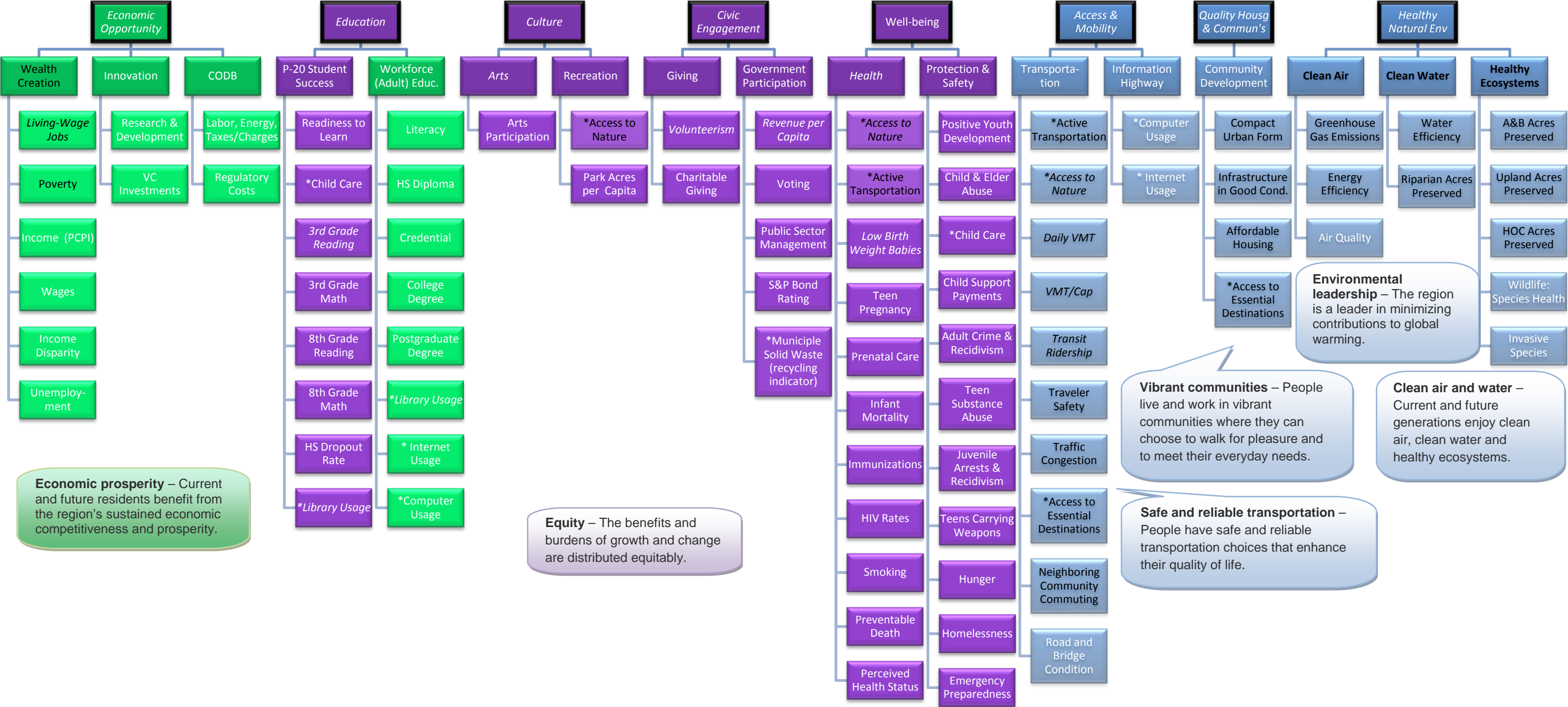
Italicized Font = from prototype categories/indicators developed for the Regional Indicators Project

***Asterisks** = some of the indicators that fall into more than one category (would fall into overlapping areas of Venn diagram)

White Font = include ideas from the Oregon Benchmark framework



Top level – Regional Report Card



MPAC/JPACT Climate Retreat



DATE: Friday, April 2, 2010
TIME: 8 a.m. to 12:30 p.m.
LOCATION: Oregon Convention Ctr
ROOMS: F-150/151

Addressing the Regional Climate Change Challenge



Mike Hoglund, Research Center Director

MPAC
March 10, 2010

Presentation overview

- Metro/Regional Climate Activities
- Regional Greenhouse Gas Emissions Inventory
- State Legislative Mandates
 - 2007: Greenhouse Gas (GHG) Goals
 - 2009: House Bills 2001 and 2186
 - 2010: Senate Bill 1059
- HB 2001 Scenario Planning: Metro Requirements
- Q&A/Discussion

3

Metro Climate Activities

Metro Resolutions 08-3931 & 08-3971

- Making the Greatest Place
- **Regional GHG Inventory**
- Regional Indicators Project
- Climate Calculator (Procedures Manual)
- Climate Prosperity (Economic Strategy)
- Climate Adaptation (Planning Framework)
- **Regional Scenario Planning (HB 2001)**

4

Metro Objectives

Metro Resolutions 08-3931 & 08-3971

- Strong technical foundation to inform decision-making
- GHG emissions considered in policy and program decisions
- Successful collaboration around climate change



5



Regional Greenhouse Gas Emissions Inventory

 Metro | *People places. Open spaces.*

6

Inventory Objectives

- Identify and manage greenhouse gas risks and opportunities with regional systems
- Baseline for regulatory and legislative developments
- Provide foundation to collaborate with local governments, ODOT, TriMet and others
- Set stage for integrated suite of tools for Metro program analysis

7

Community GHG Inventories

Type I: Traditional Sector Inventory

- Explains what is happening, not why
- Limited to “tailpipe” emissions
 - Energy, transport, waste
- Excludes production cycles (e.g., material flows)
- Excludes intra-US trade & Inter-national trade

8

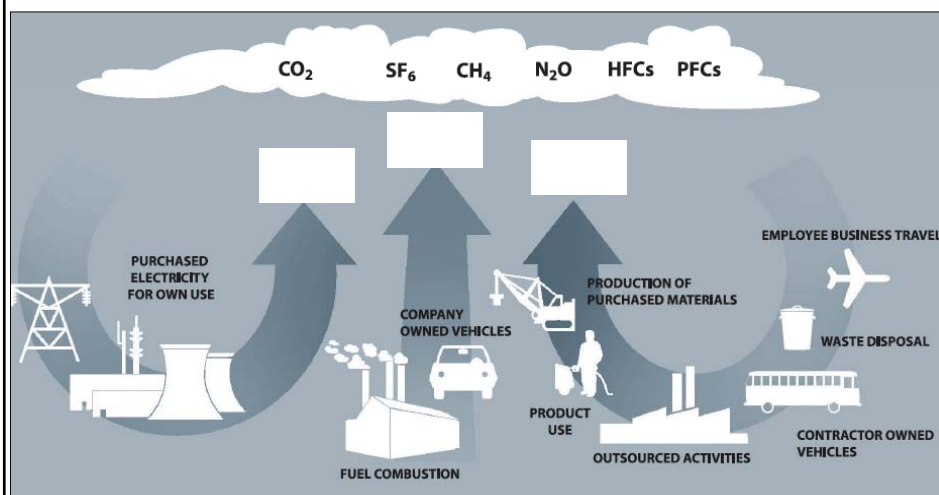
Community GHG Inventories

Type II: System Inventory

- Explains what is happening, **and** why
- Includes “tailpipe” emissions
 - Energy, transport, waste
- Includes production cycles (e.g., material flows)
- Includes intra-US trade
- Excludes international trade
 - No Data

9

Sources/Systems



Source: World Resources Institute

10

Methodology



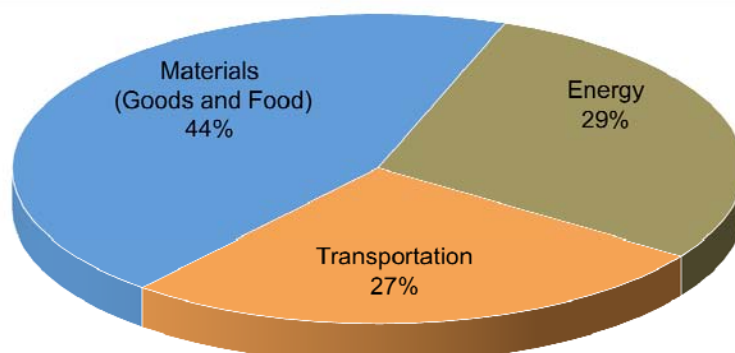
- Systems-based view (EPA)
- Represents entire economy
- Adjusted U.S. per capita GHG values to local/regional data when available
- Results provide sense of scale
- Informs policy discussions
- Build capacity / awareness related to state mandates

11

Metro Area 2006 GHG Inventory

Metro Area Greenhouse Gas Emissions

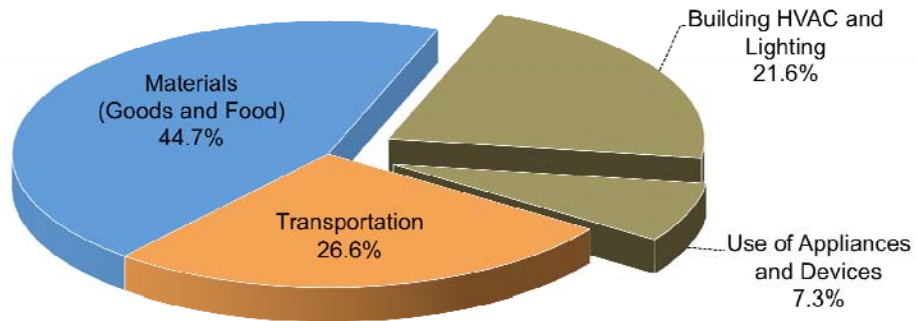
29.3 Million Metric Tons Carbon Dioxide Equivalent (MMT CO₂e)



Subject to further refinement

12

Results: Energy

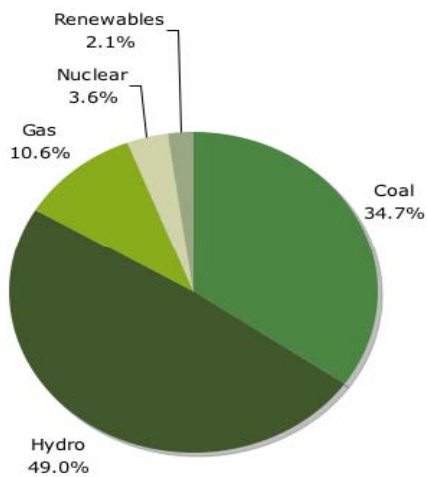


Subject to further refinement

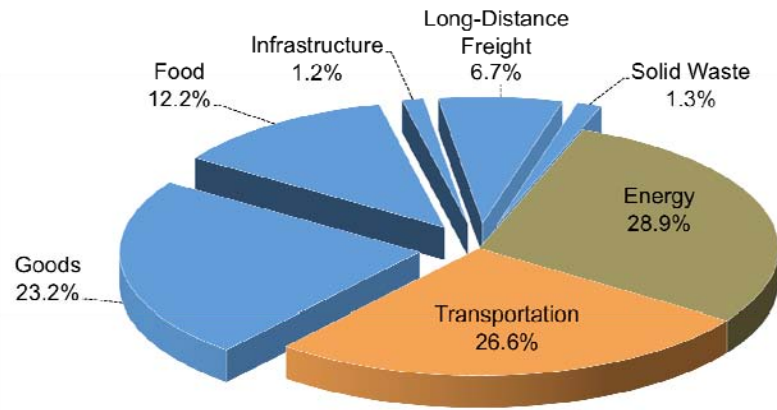
Results: Energy

Regional Sources of Electricity Northwest Power Pool (NWPP)

**NW Grid = 30 %
Lower
Emissions than
US Average**



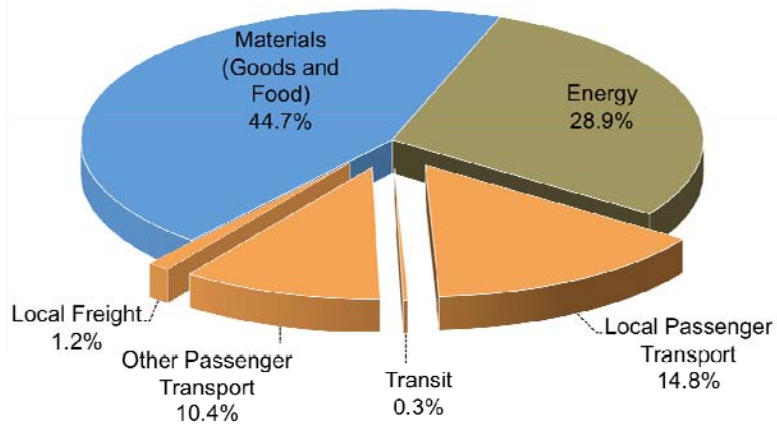
Results: Materials



Subject to further refinement

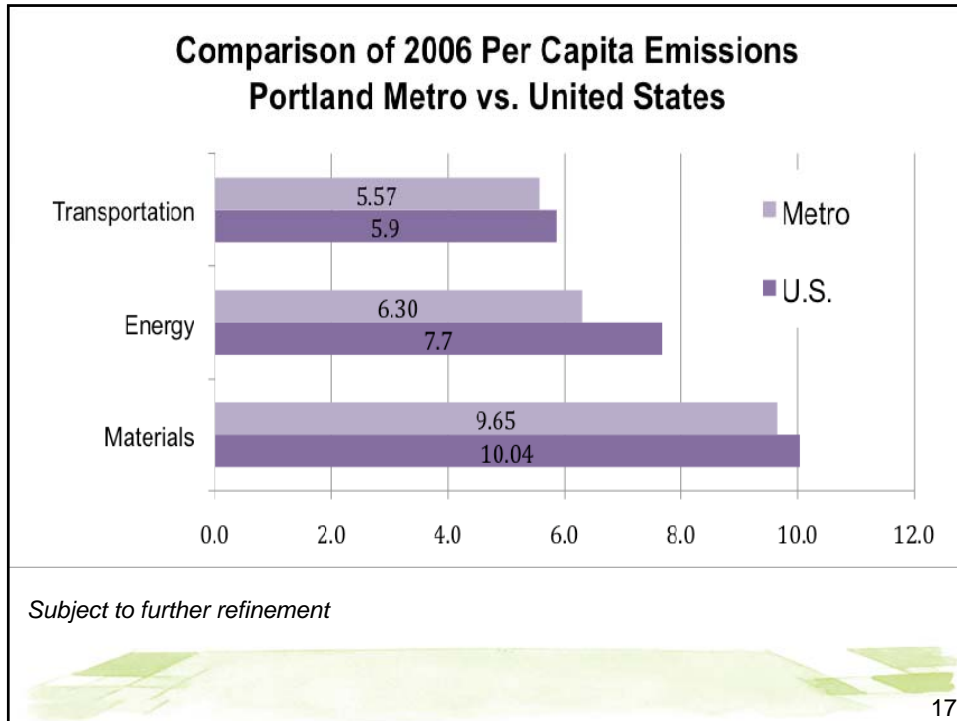
15

Results: Transportation



Subject to further refinement

16



Questions?

18



State Climate Legislation


- 2007: GHG Goals
- 2009: House Bills 2001/2186
- 2010: Senate Bill 1059

 Metro | *People places. Open spaces.*

19

Oregon Greenhouse Gas Goals

- Stop emissions increases by 2010
- 10% reduction below 1990 levels by 2020
- 75% reduction below 1990 levels by 2050



20

HB 2001

- 2009 Legislature
- Comprehensive transportation package
- Gas tax and fee increases
- Directs majority of new revenue to earmarked projects
- Includes Metro-area greenhouse gas (GHG) requirements

21

HB 2001 –

Metro Area GHG Requirements

- Scenario Planning
 - Light duty vehicles (<10,000 lbs.)
 - Develop and analyze minimum of two scenarios
 - Report to Legislature early 2012
 - Adopt a scenario next RTP Update (2014)
 - Local Governments adopt appropriate planning revisions (Comp Plan, TSPs, land use regs.)
 - Requires State financial assistance

22

HB 2001 – *Metro Area GHG Requirements*

– State Activities

- Provide financial assistance for scenario planning
- Set target for emission reduction in the light duty transportation emission sector
- Account for fleet technology and turnover
- Recommend modeling/analysis tools & methods
- DLCDC rules for implementation, as necessary

23

HB 2001 – *Metro Area GHG Requirements*

– Building Scenarios

- Provide realistic choices
- Test diverse transportation/land use elements
- Focus on VMT, vehicles, fuels, system management
- Process
 - Public
 - Stakeholders
 - Government Partners

24

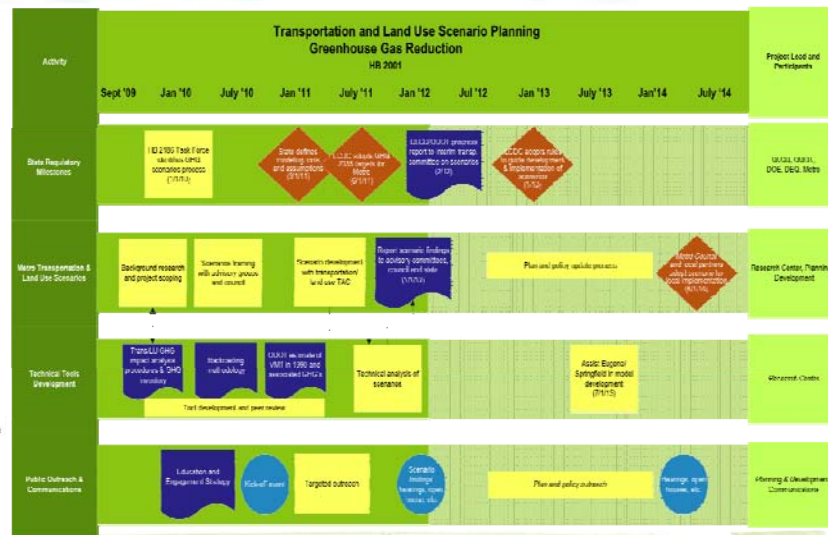
Desired Regional Outcomes

- Sustained economic competitiveness and prosperity
- Safe and reliable transportation choices
- Vibrant, walkable communities
- Leadership on climate change
- Clean air, clean water and healthy ecosystems
- Benefits and burdens shared throughout the region



25

HB 2001 Scenarios Planning



26

GHG Scenario Planning Timeline

March	Release Inventory Coordinate w/ state agencies
April 2	MPAC/JPACT climate change retreat with Dr. Bill Moomaw
April	Metro/ODOT IGA
May	Continue work plan development
June	MPAC, JPACT and Council approval of Scenario Planning work plan
July	Formal project kick-off:

27

Discussion



For more information, contact:
Mike Hoglund, Research Center Director
Mike.Hoglund@oregonmetro.gov

Kim Ellis, Principal Transportation Planner
Kim.Ellis@oregonmetro.gov

28



SB 1059

1. 2010 Legislature
2. Non-Metro MPOs
3. Requires:
 - a) state strategy for reducing transportation greenhouse gases
 - b) scenario planning guidelines
 - c) GHG reduction targets for all Metro areas
 - d) State sponsored GHG reduction toolkit
 - e) GHG scenario planning for non-Metro
 - f) Coordinated public outreach/education process

JPACT and MPAC workshop

FRIDAY, APRIL 2, 2010 8 A.M. TO 12:30 P.M.

Oregon Convention Center, Rooms F150-151

Climate and community prosperity

Addressing climate change by investing in great communities

Addressing the climate change challenge will require visionary leadership on the part of land use and transportation policy-makers. To develop a strategy to create good jobs, make the most of our existing transportation system and reduce greenhouse gas (GHG) pollution while continuing to develop great communities, JPACT and MPAC members will come together to:

- develop a common understanding of the science of climate change and the impacts of land use and transportation strategies on GHG pollution;
- identify shared goals, expectations and policy options;
- commit to the development of a strategy to achieve a healthy climate and great communities.



Metro | *People places. Open spaces.*

Participants

MPAC and JPACT members and alternates

Audience

Public agency staff, Oregon Metropolitan Planning Organization Consortium members, other interested stakeholders

Draft agenda

- 8 a.m. Welcome – Gresham Mayor Shane Bemis (MPAC Chair) and Metro Councilor Carlotta Collette (JPACT Chair)
- 8:05 a.m. State context – Oregon Transportation Commission Chair Gail Achterman and Land Conservation and Development Commission Chair John VanLandingham
- 8:20 a.m. Regional and local context – Mayor Bemis and Councilor Collette
- 8:35 a.m. Making the Case for Climate Action: The Science and Implications – Dr. William Moomaw
- 9:20 a.m. Q & A and group discussion – Metro Chief Operating Officer Michael Jordan, facilitator
- 10 a.m. Break
- 10:15 a.m. Getting There From Here – Dr. William Moomaw
- 10:45 a.m. Q & A – Michael Jordan, facilitator
- 11 a.m. Small group activity/structured report out
- Noon Next steps/adjourn – Mayor Bemis and Councilor Collette
- Lunch

Note: JPACT members will reconvene from 1 to 3 p.m. to discuss MTIP policy development.

About William Moomaw

William Moomaw is a professor and founding director of the Center for International Environment and Resource Policy at Tufts University and a lead member of the Nobel Prize-winning Intergovernmental Panel on Climate Change (IPCC), a UN-sponsored group of scientists. He has worked on mitigation and adaptation aspects of climate change for more than 20 years. He was the first director of the Climate, Energy and Pollution program at the World Resources Institute. He has been a lead author on five IPCC reports, recognized with the 2007 Nobel Peace Prize, and has written extensively on greenhouse gas emission reductions, renewable energy and other strategies for addressing climate change.

Registration required

Lunch provided to JPACT and MPAC members, alternates and speakers. Audience members may purchase lunch – see registration form for details.

For registration information, contact Kelsey Newell at 503-797-1916 or e-mail kelsey.newell@oregonmetro.gov.

SPRING 2010

GreenScene



Your spring guide
to great places and
green living

www.oregonmetro.gov



quiver
warble
thaw
delight
unfold
scout
erupt

Taking a vacation in your own backyard



Salmon Creek Greenway, Vancouver

places you haven't visited since you first moved here or find a hidden gem you never thought to try. The adventure will remind you why you choose to live in the Pacific Northwest.

Consider Metro your tour guide. After all, as your regional government, Metro aims to make the region a fantastic place to play. Whether you want to explore the Oregon Zoo or paddle the Willamette River, take in a musical or take on an afternoon of natural gardening, Metro can help. Read on for hometown excursions to suit four profiles.

The family clan

Your kids have the week off school or simply have cabin fever on a drizzly weekend. Time to bundle up for an adventure that will satisfy the entire family.

Head to Cooper Mountain Nature Park at the southern edge of Beaverton, overlooking the Tualatin River Valley. Three-and-a-half miles of trails traverse forest, prairie and oak woodlands at this 231-acre park, a legacy of Metro's first natural areas bond measure. Cooper Mountain is managed by Tualatin Hills Park & Recreation District, whose staff offers everything from nature play groups to guided walks. www.thprd.org/parks/coopermountain.cfm

If you didn't get your fill of wildlife, stop at Metro's Oregon Zoo. As the state's most popular paid tourist attraction, the zoo hosts a steady stream of events including daily keeper talks and an annual spring break extravaganza. The new Predators of the Serengeti exhibit features lions, wild dogs and other African carnivores. And your little ones will love the zoo's most famous "little one," the hulking baby elephant Samudra. www.oregonzoo.org

Friends or co-workers spending spring break on a tropical beach, slathering on sunscreen and sipping piña coladas? No need to be jealous. The Portland metropolitan area provides everything you could want for a fabulous getaway – with a lower price tag and zero time at the airport.

Plus, there's something magical about ditching your day-to-day routine to rediscover your hometown. Return to

Got energy left? Catch "The True Story of the 3 Little Pigs," playing through March 21 at Metro's Portland Center for the Performing Arts in downtown Portland. This rollicking musical, presented by Oregon Children's Theatre, invites the audience to get involved. www.pcpa.com

The urbanites

Let's say you love the Portland metropolitan area for its vibrant neighborhoods, close-to-home outdoor activities and artsy vibe. You're in luck!

Download an expedition from Metro's Walk There! guide, which provides photos, maps and trivia to ponder while you stroll. You could start your journey in Portland's chic Pearl District and climb to the Pittock Mansion. Maybe the Kenton neighborhood and the Columbia River Slough are more your style. Or acquaint yourself with historic downtown Vancouver. Whatever your route, you'll find sustenance at neighborhood coffee shops and restaurants. www.oregonmetro.gov/walkthere

Time for a history lesson. You've probably biked or bused past Lone Fir Cemetery at Southeast 20th Avenue and Morrison Street

without stopping to explore. One of Metro's 14 pioneer cemeteries, Lone Fir is the resting place of some famous Portland families (Do the names Hawthorne and Lovejoy ring a bell?) along with some less upstanding folks. If your visit sparks your imagination, check out Friends of Lone Fir. The group offers guided tours, a ghoulish Halloween event and a CD of songs composed by local musicians in homage to some of Lone Fir's colorful residents. www.friendsoflonefircemetery.org

Finish the day with a show at the Portland Center for the Performing Arts – perhaps Andrew Lloyd Webber's "Cats" the week of March 23 or "Dreamgirls" the week of April 13. This Metro-owned arts venue hosts more than 900 performances per year so you'll have plenty of choices. www.pcpa.com

The green beings

Sometimes it's nice to spend a vacation sprucing up your home, your community and your spirits. If you have a green streak, this itinerary is for you.

Visit the natural discovery garden at Metro's Blue Lake Regional Park, 20 minutes east of downtown Portland. You'll return home fired up about transforming your own backyard into an eco-wonderland. For more tips, turn to Metro's natural gardening web site. www.oregonmetro.gov/garden

Mark your calendar for two upcoming events at the Portland Expo Center, another Metro facility. At the Better Living Show March 26-28, check out vegan cooking demonstrations, eco-friendly fashion and dozens of sustainable living exhibits, including a Metro booth. On April 17, the People Helping People Garage Sale encourages you to reuse rather than buy new and donates half the proceeds to the Portland Rescue Mission. www.betterlivingshow.org www.portlandgsale.com

Good thing the Expo Center is reachable by MAX because this is the week you try going car-free. You'll find inspiration, tips and news on the Drive Less/Save More web site. You'll also want a copy of Metro's popular Bike There! map. www.drivelessavemore.com www.oregonmetro.gov/bikethere

Spring cleaning? Visit Metro's web site to find out how to save money and protect your family and the environment by using safe, simple ingredients to clean your home.
www.oregonmetro.gov/greencleaners

If your new healthy lifestyle inspires you to give back, sign up to volunteer at Metro's parks and natural areas. You can pull weeds, nurture native plants or lead nature walks.
www.oregonmetro.gov/volunteer

The consummate hosts

Company's coming and it's your job to show off the Portland metropolitan area. Take a break from the typical tourist attractions and give your visitors an insider's look at our region.

When you ask Oregonians why they choose to live here, many rave about having nature so close to home. That's why Metro is part of a new movement called The Intertwine, meant to stitch the region's parks, trails and natural areas into the best outdoor recreation system in the world. Log on to the web site to zero in on a special expedition, from kayaking the Columbia River to taking a peaceful hike in Forest Park.
www.theintertwine.org

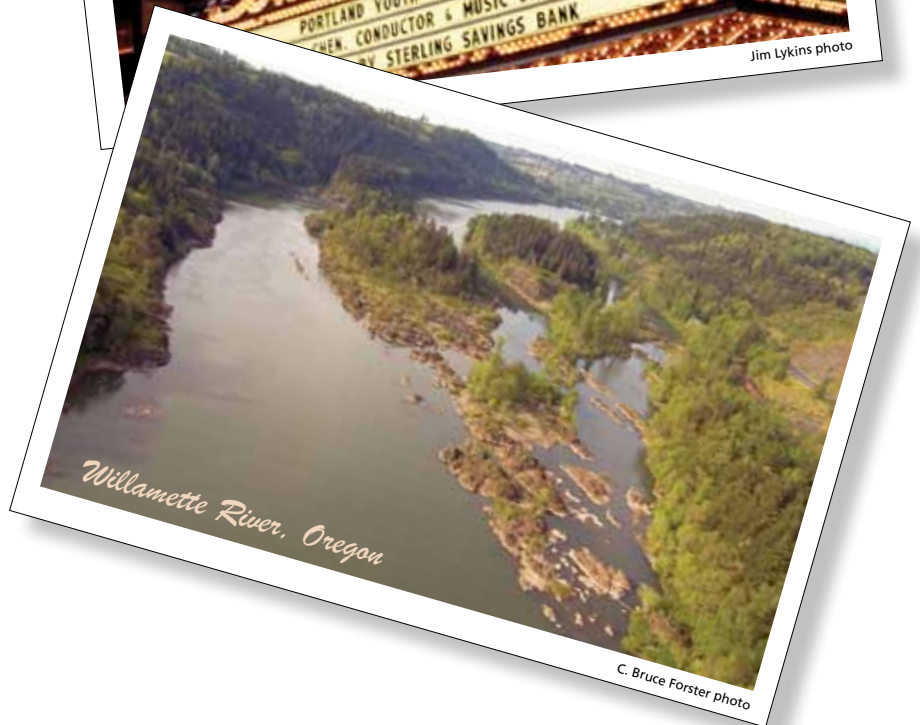
Who says your guests won't work for dinner? Enlist them to help with that painting project you've been putting off and use low-cost, high-quality MetroPaint. Metro's recycled latex paint line, which is making a splash at Miller Paint stores, shows off Portland's green ethic.
www.oregonmetro.gov/metropaint

The region prides itself on lively neighborhoods studded with parks and bike parking, historic homes and innovative new architecture, local restaurants and shops. But many people have no idea how these places come to be. So before your guests arrive, read up on the Metro's Making the Greatest Place initiative. At the risk of sounding slightly geeky, offer some perspective when you lead a tour of your favorite neighborhood – complete with great exercise, great food and great souvenirs.
www.oregonmetro.gov/greatestplace

Having fun...



Jim Lykins photo



Willamette River, Oregon

C. Bruce Forster photo

Wish you were here!

SPRING
2010

Desperately seeking spring

A naturalist's guide to spring in the region

by former Metro naturalist Elisabeth Neely and Metro naturalist James Davis

Cabin fever got you down? Grab some boots, a sandwich, a water bottle and your raincoat (just in case) and head out the door to one of the region's parks and natural areas to experience the signs of spring. Although nature does not always follow a calendar, this naturalist's list should provide some good bets for your very own spring treasure hunt. Remember to always keep a good distance from nesting birds and other animals with young and leave wildflowers growing for everyone to enjoy.



Western trillium

C. Bruce Forster photo

March

Spring officially begins on March 20 with the vernal equinox, but in our mild climate there are earlier signs of its arrival at these parks and natural areas.

The first flowers you'll see blooming are the greenish-yellow catkins of the California hazelnut (also known as the wild filbert) hanging down from the otherwise bare branches of this tree-like shrub. Soon after, if you look at the tops of the red alders you can see their catkins give a fuzzy, reddish look to the tops of the trees. Catkins (the male flowers) are not what most people think of when you say "wildflower" so the first big, colorful flowers many people notice are the flamboyant yellow flowers of skunk cabbage in wet fields and swampy spots. *Oxbow Regional Park*

Scan the skies over wetlands and you will see some of the first returning swallows catching

the early flying insects. *Smith and Bybee Wetlands Natural Area, Jackson Bottom Wetlands Preserve*

Starting on St. Patrick's Day, look for osprey returning from their wintering grounds in Mexico. Turkey vultures arrive at the same time, soaring with their wings held up in their distinctive manner. The classic "ribbit, ribbit" of tiny Pacific chorus frogs seems much too loud for their small size, but they gather in large groups to call for their mates. *Oxbow and Blue Lake regional parks, Smith and Bybee Wetlands Natural Area, Hagg Lake, Barton Park*

The usually wet and warmer weather of March not only brings out the frogs but also slugs and snails. The banana slug, the world's largest land slug, is an icon of the Pacific Northwest. In forests, look for the beautiful banded forest snail with its multicolored shell that varies from snail to snail. In the spring you can sometimes see them about

head-height in trees. *Smith and Bybee Wetlands Natural Area, Tryon Creek State Park and Oxbow Regional Park*

By the end of this month the trilliums, often considered the ultimate sign of spring, are in bloom along forest trails. Tryon Creek State Natural Area holds its annual Trillium Festival in early April. *Tryon Creek, Oxbow Regional Park, Audubon Sanctuaries, Forest Park*

April

By now the Western painted turtles are out of hibernation and trying to warm up as much as they can. On any clear, sunny morning you can find them basking on the logs at "Turtle Turnout" at Smith and Bybee Wetlands. Approach the fence at the turnout quietly and don't point at them and you should be able to get a good look with binoculars or a spotting scope.

Don't miss the heavenly sweet scent of the buds of the black cottonwood trees. You can catch this fragrance in the air as early as March but it's best on a still April day when the sun warms the trees. Cottonwoods are the tallest deciduous trees in the Pacific Northwest and are found along waterways all over the region. *Smith and Bybee Wetlands Natural Area, Oxbow Regional Park, Chinook Landing Marine Park, and any park along the rivers*

In the conifer forest, the tiny brown winter wrens are singing their loud, many-trilled song from perches among the sword ferns. They sound like they are singing on fast forward. *Oxbow Regional Park, Tryon Creek State Park, Forest Park*

May

This month everything seems to be buzzing with new life. Singing, courting birds and blooming wildflowers are abundant and obvious. This is the peak month of bird song so be sure to stop and listen. The American robin leads the dawn chorus with his "cheer up, cheerily" starting in the wee hours. *All locations, including right outside your bedroom window*

A multitude of migrating songbirds, especially warblers, come through the area in waves. Each week brings new ones. *Smith and Bybee Wetlands Natural Area, Tualatin Hills Nature Park, Mount Tabor, Cooper Mountain Nature Park*

The abundant cyanide millipede – flat and dark with light spots along its sides – can sometimes be seen in large numbers as they crawl through the forest looking for mates. Where they cross trails, you may see dozens at a time. Carefully pick one up and smell it. You can smell the cyanide gas they emit to deter predators. Don't worry; it's not enough to hurt a big mammal like you. *Tryon Creek State Park, Smith and Bybee Wetlands Natural Area*

In the garden: Get your green on!



Springtime in the garden. Ready to dig in? From clearing out the chemicals to picking native plants, growing green brings big benefits to people, pets and the planet. Get started today with these five tips from Metro.

Shake out the shed

Got pesticides? Round them up from the shed and drop them off at one of Metro's household hazardous waste facilities or periodic collection events. Replacing toxic chemicals with compost, organic fertilizers, hand tools and other nonhazardous garden helpers makes for a safer yard and healthier waterways.

Prep the soil with compost

Time to harvest that soil-like stuff from the bottom of your compost bin. It's compost indeed so scoop or shovel it out, spread it and fork it into your planting beds. Only work the soil when it's a bit moist, however, (not dripping wet) to protect its structure and ensure drainage. If growing typical edibles, roses or annual flowers consider adding a little organic fertilizer to the soil. Avoid over-fertilizing which can increase pest or disease problems.

Plant a few native plants

Brilliant red-flowering currants, gorgeous Oregon grapes and delicate trilliums hint at the amazing array of great garden natives. Match them with the sun, soil and moisture conditions they like and you'll gain a low-maintenance oasis that brings birds, bees and butterflies to the yard. Many nonnative plants get a thumbs up too, but steer clear of invasive species such as ivy and butterfly bush.

Grow some organic food

Don't miss the simple satisfaction of picking tomatoes, strawberries or lettuce from your own yard. A wood-edged raised bed in a sunny spot can pump out the produce – with just a little love and care. Add a few Mediterranean herbs, berry bushes and bean plants to your border beds and enjoy the colorful, edible bounty.



Jim Cruce photo

Add just a little water

Don't let stray sprinklers, damaged drip lines and forgotten timers blast your water bill. Check for leaks, adjust your timers to the weather and avoid overwatering to conserve water, save money and protect the health of your plants. Butterflies, bees and birds need water, too. Make a bug bath by filling a tray with pebbles or sand and water.

Want more green gardening ideas? Metro now offers more than 60 public seminars at home gardens, retail nurseries and demonstration gardens across the region. For the complete schedule, call Metro Recycling Information at 503-234-3000 or visit Metro's web site.

More help for the garden

Pesky slugs? Leaf blight? Weeds? Time to take 'em on without toxic chemicals. Metro's newly updated "Grow Smart, Grow Safe" consumer guide ranks 600 pesticides, fertilizers and soil amendments, helping home gardeners and landscape professionals find products least hazardous to people, pets, wildlife and waterways. Call Metro Recycling Information at 503-234-3000 for a free copy or download the PDF on Metro's web site.



www.oregonmetro.gov/garden



Time to spring back on your bike!

Gray skies are now giving way to periwinkle blue and temperatures are warming up. It's time to dust off that bike in the garage and hop back on for another season of warm-weather biking. Follow these tips for a safe, smooth ride:

- Bike tires** Squeeze the tire's sidewalls (side edges) toward each other as hard as you can. If the sidewalls squeeze together easily, the air pressure is low and the tires definitely need to be inflated. You may need to replace your tire if you notice cracks in the sides or worn spots that bulge.
- Brakes** Squeeze the brakes and rock your bike forward. Both brakes should grip the rims smoothly and evenly. When braking, the levers should be at least one finger's width from the handlebars.
- Bike chain** Grab the pedal and rotate the wheel backwards to ensure your bike is running smoothly. Lube it up with bike-specific lubricant and clean off the excess with a rag.
- Gears and bolts** Tighten all the bolts on the bike where needed – nothing should be loose.

Visit the Drive Less/Save More web site for how-to tips, videos and more.

www.drivelessavemore.com



Introducing Chehalem Ridge Natural Area

Imagine standing on top of Chehalem Ridge, looking out over Tualatin Valley farmland and five Cascade Mountain peaks: Rainier, St. Helens, Adams, Hood and Jefferson.

You might spot deer tracks, beaver carvings or an uncommon oak-madrone woodland. Or discover the starting point for a network of streams flowing to the Tualatin River, nestled in a landscape of young Douglas fir trees. With generations of careful management, they'll mature into old-growth forests that support diverse wildlife and clean water.

Now you have an inkling of what it's like to experience Metro's newest natural area: a 1,143-acre expanse of forestland south of Forest Grove. Metro began the new year by purchasing Chehalem Ridge Natural Area, the largest acquisition in the history of the Portland metropolitan area's two voter-approved bond measures.

Approximately the size of Oxbow Regional Park, the new natural area is one of the region's largest remaining swaths of undeveloped forest. The land will help protect water quality and provide wildlife habitat in the Tualatin River Basin and serve as a scenic and recreational resource for the region.

"This acquisition nearly doubles the amount of land the Metro Council has protected with the latest bond measure, but Chehalem Ridge is much more than a number," Metro Council President David Bragdon said. "It's also a milestone in terms of scenery, restoration potential and partnerships."



Protecting Chehalem Ridge was a team effort. The Trust for Public Land negotiated a \$6.1 million purchase from Stimson Lumber Company and immediately sold the property to Metro for the same price.

Because of its scale, Chehalem Ridge Natural Area can have a big impact on the Metro Council's goals for land acquisition in this area: enhancing wildlife habitat and water quality. Restoration work on the property has the potential to improve the health of the Tualatin River.

"It's home to my drinking water and that of 200,000 of my friends here in western Washington County," Metro Councilor Kathryn Harrington told the Hillsboro Argus, one of many media outlets that featured news about Chehalem Ridge.

The acquisition could also provide greater public access to nature. An existing gravel and dirt road network at Chehalem Ridge Natural Area has the potential to serve as the basis for a future trail system.

Metro's science staff will spend a year or so getting to know the property before making long-term decisions about public access. They'll develop a plan to guide forest management and habitat restoration while organizing guided hikes and other short-term opportunities for the public to see and experience Chehalem Ridge.

Follow the evolution of this regional gem through photos, videos, maps and tour announcements on Metro's web site.



Metro Council President David Bragdon tours Chehalem Ridge Natural Area.

[www.oregonmetro.gov/
chehalemridge](http://www.oregonmetro.gov/chehalemridge)



Quick facts about Chehalem Ridge

- At 1,143 acres – roughly two square miles – Chehalem Ridge is four times the size of the next largest property acquired by Metro's Natural Areas Program.
- To picture Chehalem Ridge, imagine more than 1,000 football fields (each a bit larger than an acre) or 9,000 urban home lots.
- Chehalem Ridge is approximately the same size as Oxbow Regional Park or the Tualatin River National Wildlife Refuge.
- The property was formerly owned by Stimson Lumber Company. Before that, substantial areas were farms or orchards.
- Chehalem Ridge contains 28 mapped drainages and three year-round streams that flow to the Tualatin River – the source of drinking water for 200,000 people.
- Though dominated by young Douglas fir plantations, the site has significant wildlife values: white oak, madrone, Pacific yew and Western red cedar trees; native shrubs that provide excellent foraging habitat for migratory birds; and several riparian areas and seasonal wetlands with beaver activity.
- Metro's partner in the acquisition, The Trust for Public Land, is contributing \$90,000 toward land management and stewardship.

Volunteer opportunities bloom at the Native Plant Center

Indian plum blossoms in Douglas fir forests and Western saxifrage blooms dotting the rocky meadows of an oak prairie are sure signs of spring's arrival. Interested in enhancing your knowledge about the diversity of local native plants in the Portland metropolitan area while exploring less traveled places on Metro's properties? Consider becoming a volunteer Native Plant Center seed scout, seed collector and steward.

Seed scout

Fieldwork starts with training followed by scouting sites to gain familiarity with the area. Volunteers collect phenology (the relation of climate to plant flowering) data for the plant center's Bloomtime Project and participate in targeted seed collection. Trained seed scouts are expected to visit their assigned sites for a minimum of six visits throughout the season. Seed collection sites focus on wet prairie, upland prairie, oak woodland and coniferous forest habitats. This year's comprehensive training will take place over two Saturdays on April 3 and June 5. To apply, download and submit a completed application to marsha.holt-kingsley@oregonmetro.gov. For an application, visit www.oregonmetro.gov/nativeplantcenter.

Seed collector

Volunteers interested in less of a time commitment are encouraged to participate in group seed collection events led

by experienced seed collectors or in seed harvest days at the Native Plant Center scheduled throughout the season. For more information, send e-mail with your name, e-mail address and phone number to nativeplantcenter.volunteer@oregonmetro.gov.

Steward

The life of a seed from its collection in the wild through its stages of development and growth at the plant center is a compelling story. This spring seventh graders from Athey Creek School will visit the plant center to get their hands dirty and experience growing native plants from seed, planting out seedlings and connecting to the natural world through a series of field trips. To learn more about exciting ways to get involved with the budding conservation education program at the plant center, send e-mail to nativeplantcenter.volunteer@oregonmetro.gov.

Native Plant Center volunteer ventures

9 a.m. to 1 p.m.
Saturdays, March 13 and 27, April 10 and 17, May 1 and 15

Come celebrate spring at Metro's Native Plant Center in Tualatin and discover the joy of propagating sensitive native species to support regional restoration projects. Volunteers help plant bulbs into pots and field beds, plant seedlings from seed collected at Metro's natural areas or maintain native seed grow-out beds. Learn propagation and composting skills and work with local herbaceous species found in wetland, forest and prairie habitats. Enjoy a special SOLV IT work day at the plant center on April 17. This is a family-friendly venture; prior gardening experience not required. Gloves, tools, water and a snack provided. Advance registration required; call 503-638-7240 or send e-mail to nativeplantcenter.volunteer@oregonmetro.gov. *Metro* by arrangement



.....
www.oregonmetro.gov/naturalareas
.....



With the addition of Chehalem Ridge, Metro brought its total to 2,400 acres of protected natural areas for approximately \$53 million. The \$227.4 million bond measure, approved by voters in 2006, funds land acquisition and capital improvements that protect water quality and fish and wildlife habitat, enhance trails and wildlife corridors, and provide greater connections to nature in urban areas throughout the Portland metropolitan area. Visit Metro's web site for acquisition updates, information about grant opportunities and new projects near you.

Spring calendar

Cooper Mountain nature play time

10 a.m. to noon Mondays, March 1, 15 and 29, April 5, 12, 19 and 26, May 3 and 17
Make new friends while playing in nature at Cooper Mountain. During this time the nature house and patio are transformed into a safe environment just right for games, learning and exploration. Parent participation required. Suitable for ages 1 1/2 to 4. Registration and payment of \$4 per child required in advance; call 503-629-6350. *Tualatin Hills Park & Recreation District*

Tadpole tales

10 to 11:30 a.m. Wednesdays, March 3 through May 26
Children ages 3 to 5 and their parents are invited to explore nature at natural areas along the Columbia Slough. Enjoy a story and nature walk with different themes each week such as frogs, birds or bugs. Registration and payment of \$3 per child required in advance; call 503-281-1132. *Columbia Slough Watershed Council*

Wild about Cooper Mountain

1 to 3 p.m. Wednesdays, March 3, 10 and 31, April 14 and 28, May 5 and 12
Preschoolers and kindergartners learn about Cooper Mountain by exploring a new topic each week through walks, stories, hands-on activities, games and crafts. Suitable for ages 4 to 6. Registration and payment of \$13 required in advance; call 503-629-6350. *Tualatin Hills Park & Recreation District*

Comprehensive organic gardener program

6:30 to 8:30 p.m. Thursdays and Saturdays, March 4 through 25
This multi-session organic vegetable gardening program blends scientific and functional approaches while emphasizing hands-on practice. Students learn the basic concepts involved in organic food gardening and by the end of class, should be ready to install and plant a veggie garden. Classes are held on Thursdays from 6:30 to 8:30 p.m. and Saturdays from 10 a.m. to 3 p.m. from March 4 through March 25. Registration and payment of \$260 or \$234 for Oregon Tilth members and Lake Oswego residents required in advance; call 503-675-2549. *Oregon Tilth*

Green space planting: Interstate 205 corridor

9 a.m. to 1 p.m. Saturdays, March 6 and 20
Join the Friends of Trees and help plant trees to beautify the Interstate 205 multi-use path as part of a three-year project in partnership with ODOT and Metro. Tools, work gloves, coffee and snacks provided. On March 6, meet at Southeast 92nd Avenue and Flavel Street; on March 20, meet at Southeast Hawthorne Boulevard and 95th Avenue. For more information, call 503-282-8846 ext. 24. *Friends of Trees*

Johnson Creek watershed wide event

9 a.m. to 1 p.m. Saturday, March 6
Help remove invasive species and plant native trees and shrubs at one of 12 priority restoration sites in the Johnson

Creek watershed at this 12th annual event. Bring families, coworkers, scout troops, clubs or friends together for a morning of rewarding work along Johnson Creek. A volunteer appreciation lunch follows work parties. Location provided with registration. Advance registration required; call 503-652-7477. *Johnson Creek Watershed Council*

Owl fest

4 to 7 p.m. Saturday, March 6
Portland is teeming with owl activity in the springtime months. If you love owls, come out to Tryon Creek State Natural Area for an evening of owl celebration. Activities for the entire family include owl pellet dissection, book reading and signing by local authors, snacks, guided hikes and up close encounters with the Audubon education owls – Hazel and Julio. Appropriate for all ages. Free. Advance registration not required but guided hikes are on a first come, first served basis. Sign up when you check in. *Friends of Tryon Creek State Park*

Saturday guided nature hikes

10 to 11:30 a.m. Saturdays, March 6 through May 29
Join a park naturalist for a free guided nature hike to explore the forest and stream ecosystems and natural history at Tryon Creek State Natural Area. Topics vary but are appropriate for all ages. Parents must accompany children on all hikes. Free. For more information or if attending in a group of more than 10 people, call 503-636-9886 ext. 222. *Friends of Tryon Creek State Park*

Wildlife refuge tree planting

9 a.m. to noon Saturdays, March 6 and 13
Help plant trees and shrubs along Gibbons Creek at the Steigerwald Lake National Wildlife Refuge. Afterwards, enjoy a hike on the friendly and accessible trails. The refuge is located at the mouth of the Columbia River Gorge in Washougal, Wash., and is easily accessible from Portland and Vancouver. Advance registration required; call 503-226-1565 ext. 221. *Lower Columbia River Estuary Partnership*

Rain gardens 101

1 to 5 p.m. Sunday, March 7
Be a partner for clean rivers by learning about rain gardens and how to build one. Rain gardens are a great way to add beautiful landscaping to yards while protecting rivers and streams. Free. Advance registration required; call 503-935-5383. *East Multnomah Soil & Water Conservation District and Portland Bureau of Environmental Services*

Mammals of Portland

7 to 9:30 p.m. Thursday, March 11
Did you know you can see mink, beaver and river otter at Oxbow Regional Park and Smith and Bybee Wetlands? What kind of squirrels are those running around your neighborhood? Are there really mountain lions and bears in Forest Park? Metro naturalist James Davis shows you how to identify the mammals that live in your neighborhood and in Metro's parks and natural areas. There will be pelts, skulls, slides, stuffed specimens and even some scat to help you become familiar with local furry critters. You'll be surprised at who some of the wilder residents



wildlife watching



sustainable living



volunteering



nature discoveries



paddling



natural gardening



wheelchair accessible



Wildflowers at Gotter Prairie


C. Bruce Forster photo

are. Suitable for adults and teens. Meet in room 370 at Metro Regional Center. Registration and payment of \$10 per person required in advance; call 503-797-1650 option 2. *Metro* ♿

 **Spring bird walks at Smith and Bybee Wetlands**

9 to 11:30 a.m. Saturdays, March 13, April 3 and 17, May 22

Spring brings more than 25 different songbirds to join the resident birds at Smith and Bybee Wetlands Natural Area. April and May are the peak of migration with nesting in high gear during May and June. The birding action will be lively and noisy with singing birds everywhere. Learn to identify birds by sight and song. Walks are led by Metro naturalist James Davis or Patty Newland, volunteer naturalist and Audubon master birder. Meet in the Smith and Bybee parking lot on North Marine Drive. Bring binoculars or borrow a pair on site. Suitable for adults and children age 10 and older. Free. Advance registration required; call 503-797-1650 option 2. *Metro* ♿

 **Slough 101**
8:45 a.m. to 1 p.m. Saturday, March 13

Join experts for a hands-on workshop all about the Columbia Slough, a slow-moving channel of water that flows through Fairview, Gresham and

North Portland. Learn about local hydrology, history and geology that affects your neighborhood. Suitable for adults and teens. Free. Advance registration required; call 503-281-1132. *Columbia Slough Watershed Council*

 **Women in science day**

9 a.m. to 1:30 p.m. Saturday, March 13

Girls ages 12 to 18 team up with women working in science fields to plant native trees as part of a river restoration project along a Beaverton Creek tributary in Aloha. Students have the opportunity to learn from women mentors about their careers in science both during the planting event and over lunch. Event takes place rain or shine; appropriate clothing and shoes recommended. Tools and lunch provided. Free. For more information, call 503-844-9571 ext. 329. *SOLV*

 **Lone Fir Pioneer Cemetery historical tours**

10 a.m. to noon Saturdays, March 13 and April 10

Enjoy the beauty and tranquility of Metro's Lone Fir Pioneer Cemetery. The tour highlights Portland's founders, early pioneers and nationally renowned figures as well as some beautiful and unusual monument art. Explore 30 acres of mature trees and a very special rose garden. Suitable for all ages.

Enter at Southeast 21st Avenue and Morrison Street. Suggested donation of \$10. Registration not required. For more information, call 503-775-6278. *Friends of Lone Fir Cemetery* ♿ by arrangement

 **Refuge volunteer training**

5:30 to 8 p.m. Tuesday, March 16

Come discover the hidden treasure in Ridgefield, Wash., just 30 minutes north of Portland off Interstate 5. Ridgefield National Wildlife Refuge, a 5,300-acre refuge nestled in a small community, caters to volunteers of all interests, skills and abilities. Learn about the refuge and volunteer opportunities in cultural education, environmental education, habitat restoration and visitor's services. Take an optional refuge tour starting at 5:30 p.m.; orientation from 7 to 8 p.m. *Friends of the Ridgefield National Wildlife Refuge*

 **Forest Park Day of Stewardship**


9 a.m. to 1 p.m. Saturday, March 20

Help remove non-native invasive species and plant native trees and shrubs at four different sites in Forest Park. No experience required; all tools and instruction provided. A volunteer appreciation party will follow the event. Advance registration required; call 503-223-5449. *Forest Park Conservancy*

 **TogetherGreen volunteer days**

10 a.m. to 4 p.m. Saturdays, March 20 and April 24

Help spruce up Audubon's 150-acre nature sanctuary. Your day begins with a continental breakfast and short program followed by trail maintenance projects that restore and maintain the beautiful Audubon sanctuary. Tools and lunch provided. Suitable for age 15 and older with a volunteering adult. For more information, call 503-292-6855 ext. 108. *Audubon Society of Portland*

 **Green cleaning**
6 to 7:30 p.m. Tuesday, March 23

10 a.m. to noon Saturday, March 27

Detoxify your home and save money by making non-toxic cleaners for kitchen and bath. Participants will leave with tips and techniques and their own laundry detergent, all-purpose cleaner and creamy soft scrub. Meet at Oregon Center for Environmental Health, 4819 NE Fremont St. Free for members and \$5 for the public. For more information, call 503-233-1510 ext. 201. *Oregon Center for Environmental Health*

 **Spring break day camps**

8 a.m. to 5 p.m. Wednesday and Friday, March 24 and 26

Be there when spring breaks at Cooper Mountain Nature Park. On March 24, learn about Western gray squirrels and their habitat. On March 26, explore the park for signs of spring. Suitable for ages 6 to 10. Registration and payment of \$49 required in advance; call 503-629-6350. *Tualatin Hills Park & Recreation District*

 **Smith and Bybee Wetlands paddles**

Traveling by canoe or kayak is the best way to explore Smith and Bybee Wetlands. Watch for bald eagles, great blue herons and beaver lodges. Bring a canoe or kayak, binoculars, water bottle and snacks. All boats over 10 feet in length must be registered with the State of Oregon. Personal flotation devices required. Meet at the canoe/kayak launch at the natural area off North Marine Drive. Free. Advance registration required. *Friends of Smith and Bybee Wetlands*

noon to 4 p.m. Saturday, March 27

To register, call Dale Svart at 503-285-3084.

1 to 4 p.m. Sunday, April 18

To register, call Emily Roth at 503-235-6272.

10 a.m. to 2 p.m. Saturday, May 29

To register, call Troy Clark at 503-249-0482.


Dirt cheap gardening 10 a.m. to noon

Saturday, March 27

Learn how to start a vegetable garden for less money than you might think. Master gardeners will talk about organic soils and compost and other speakers discuss what to grow for your space. Free. Advance registration required; call 503-238-4775 ext. 103. *West Multnomah Soil & Water Conservation District*

Green roofs and living walls for wildlife

7 to 8:30 p.m. Tuesday, March 30

Join Dusty Gedge, world-renowned expert on creating urban rooftop habitats, and learn how to convert rooftops of any size into living landscapes. Lecture offered as part of the Wildlife Conservation Lecture Series. Meet at Oregon Zoo's banquet center. Registration and payment of \$10 or \$8 for members required in advance; call 503-226-1561. *Oregon Zoo, Audubon Society of Portland and World Forestry Center* 

Native trees of Forest Park

9:30 a.m. to noon Thursday, April 1

Join the Forest Park Conservancy's stewardship director for a springtime hike through the remote northern end of Forest Park. In honor of Oregon's Arbor Week, learn about the native trees of Forest Park and how to identify them. Suitable for age 10 and older. Free. Advance registration required; call 503-223-5449. *Forest Park Conservancy*

Clackamas River salmon refuge project

12:30 to 2:30 p.m. Saturday, April 3

Where do young salmon rest, feed, grow and hide from predators? Come see for yourself! Completed in 2005, this project is one of the largest side channel restorations in Oregon's history. The side channels were built on Metro land purchased with funds from the natural areas bond measure approved

by voters in 1995. Because this area is closed to the public, Metro offers tours so interested people can see this project in action. Join Metro parks naturalist Dan Daly to learn more about this exciting win for salmon in the region. Suitable for adults and children age 10 and older able to walk on rocky, uneven terrain. Registration and payment of \$5 required in advance; call 503-797-1650 option 2. *Metro*

Spring bird walks at Cooper Mountain

8:30 to 11 a.m. Saturdays, April 3 and May 8

Spring is the easiest time to see and identify the birds of Cooper Mountain since they are in their best breeding plumage and singing up a storm. Join Metro naturalist and expert birder James Davis for this bird walk for beginner and intermediate birdwatchers. Bring your binoculars or borrow a pair on site and be sure to dress for standing outside in the cold wind. Meet at the nature house. Registration and payment of \$8 required in advance; call 503-629-6350. *Metro and Tualatin Hills Parks & Recreation District*

Blue Lake Bunny Bonanza Egg Hunt


10 a.m. to noon Saturday, April 3

Bring the family to Blue Lake Regional Park for a fun-filled candy egg hunt rain or shine. Children age 4 years and younger will begin their search at 10:30 a.m. Children ages 5 to 10 years will seek their treats beginning at 11 a.m. Enjoy a hoppin' good time with free face painting and coloring activities under covered shelters. Free with your annual pass or park entry fee of \$5 per car or \$7 per bus. Registration not required. For more information, call Sue at 503-665-4995. *Metro*

Bird watching basics for beginners

7 to 9:30 p.m. Thursday, April 8

Metro naturalist James Davis has been getting beginning bird watchers off to a good start for 25 years. Discuss the basics of

bird identification, talk about the best field guides and binoculars and watch a slide show of the top 20 birds of the Portland metropolitan area. This class is excellent preparation for the Saturday bird watching trips and other bird classes. Suitable for adults and teens. Meet in room 370 at Metro Regional Center. Registration and payment of \$10 required in advance; call 503-797-1650 option 2. *Metro* 

Introduction to Sauvie Island Center

10:30 a.m. to noon Friday, April 9

Join the Sauvie Island Center staff for an introduction to the center's educational programs. The SIC serves elementary school youth of Portland by providing hands-on field trips at the Sauvie Island Organics Farm located in Howell Territorial Park. The center seeks to increase the food, farm and environmental literacy of the next generation. Meet in the grassy parking lot of Howell Territorial Park; Sauvie Island Center located in the barn. Free. Advance registration required; call 503-341-8627. *Sauvie Island Center*

Smith and Bybee Wetlands kayak tour

8:30 to 11:30 a.m. Saturdays, April 10 and June 5

Have you always wanted to go paddling on Smith and Bybee wetlands but don't have a boat? Let NW Discoveries provide the boat, paddle and personal flotation device for this three-hour kayak adventure. Learn about local wildlife and the

natural history of the wetlands from Metro naturalist James Davis. Some kayaking experience recommended. Suitable for adults and youth age 14 and older. Participants ages 14 to 17 must be accompanied by an adult. All participants will have a solo kayak. A couple of tandem kayaks are available if requested by a pair of paddlers. Meet at the Smith and Bybee canoe launch. Registration and payment of \$25 per person required two weeks in advance; call 503-797-1650 option 2. *Metro*

Green gardening fair and native plant sale

10 a.m. to 2 p.m. Saturday, April 10

Attention all gardeners, this event is for you. Find out how you can go green by learning sustainable gardening techniques at workshops and information booths demonstrating composting, watering, low pesticide use, growing native plants and more. Choose from a wide variety of native trees, shrubs and perennials at the 10th annual plant sale. For more information, call 503-629-6350. *Tualatin Hills Park & Recreation District*

Cooper Mountain wildflower walks

11:30 a.m. to 1:30 p.m.

Sundays, April 11 and 18


Cooper Mountain is a great place to explore with Metro naturalist Deb Scrivens. Controlled burns have encouraged a proliferation of native wildflowers, including a rare larkspur. If we are very lucky, we will spot the elusive



lazuli bunting or perhaps a Western bluebird. Bring a snack and plenty of water for this stroll. Terrain is steep in some places. Registration and payment of \$8 required in advance; call 503-629-6350. *Metro and Tualatin Hills Park & Recreation District*

Returning condors to Arizona

7 to 8:30 p.m. Tuesday, April 13

Learn about condor reintroduction efforts in Arizona as well as challenges faced by the condor population as a result of poisoning from lead ammunition. Lecture offered as part of the Wildlife Conservation Lecture Series. Meet at Oregon Zoo's banquet center. Registration and payment of \$10 or \$8 for members required in advance; call 503-226-1561. *Oregon Zoo, Audubon Society of Portland and World Forestry Center* 

Celebrate Earth Day with the StreamTeam

9 a.m. to 2 p.m. Saturday, April 17

Since 1999, the StreamTeam has coordinated a large-scale community celebration for Earth Day. Each year hundreds of volunteers join the team to plant native trees along waterways, protecting local water quality and quantity. Join the team to save salmon! For more information, call 360-992-8585. *Clark Public Utilities*

Painted turtle walks


1 to 2:30 p.m. Saturdays, April 17 and May 22

Oregon's turtles are rare, shy and hard to find but Smith and Bybee Wetlands Natural Area is home to one of the largest populations of Western painted turtles in Oregon. See these beautiful reptiles with the help of Metro naturalist James Davis, who will have small telescopes for a close look. Learn about the natural history of painted turtles and why they are so rare. Suitable for adults and children age 5 and



Experience wildlife from the water – boats provided

Ready to explore the natural wonders of the Smith and Bybee Wetlands but don't have a boat? We've got you covered! Let NW Discoveries provide the boat, paddle and personal flotation device while Metro naturalist James Davis provides a guided tour highlighting the local wildlife and natural history of the wetlands. Choose from three paddle options – canoe, canoe and kayak, or bimarān (two canoes lashed together with 2 x 6 boards) – and tour lengths from 2 to 3 hours. Ideal for families, couples or the solo paddler. For more information, see calendar listings for April 10, May 23 and June 5.

older. Meet in the parking area on North Marine Drive. Free. Advance registration required; call 503-797-1650 option 2. *Metro* 

Gresham bird survey training

9 a.m. to noon Saturday, April 17 or 5 to 9 p.m. Wednesday, April 21

Help with Gresham's annual bird survey. Birders with experience identifying birds by sight and sound are needed. Volunteers adopt a site and survey it four to seven times between May 15 and June 30. Protocol training is required; choose either the Saturday or Wednesday session. Advance registration required; call 503-618-2608. *City of Gresham*

Naturescaping basics: site planning

9 a.m. to 1 p.m. Saturday, April 17

Be a partner for clean rivers by learning about native gardening. Site planning is an extension of naturescaping basics program. This workshop gives participants experience with the steps involved in planning a landscape or project. Learn how to map property, assess garden style and needs, do some garden dreaming and work on a group design scenario. Participants required to attend naturescaping basics workshop prior to attending site planning class. Free. Advance registration required; call 503-935-5383. *East Multnomah Soil and Water Conservation District and Portland Bureau of Environmental Services*

SOLV IT

9 a.m. to 1 p.m.

Saturday, April 17

Celebrate the 40th anniversary of Earth Day by joining your fellow community members at one of more than 100 Portland metropolitan area volunteer projects, including a special work day at Metro's Native Plant Center. Clean up litter and illegal dumpsites, remove non-native invasive plants, plant native trees and shrubs, or maintain watershed restoration sites. Advance registration required; call 503-844-9571 ext. 332. *SOLV*

Wildflower tour at Madrone Wall

10 a.m. to 1 p.m. Saturday, April 17

Spring is here and native wildflowers are in bloom at the Madrone Wall. Join the tour and explore the treasures of this spectacular geologic site in the lower Clackamas River Basin. Learn about the effort to preserve the site and establish a future public park. Bring your wildflower identification book if you have one. One and a half miles of rugged, steep and brushy trails. Suitable for age 10 and older. Meet at Still Meadow Conference and Retreat Center, 16561 SE Marna Road, Damascus, for an introductory presentation and then carpool to nearby site for tour. Free. Registration not required. For more information, visit www.savemadrone.org. *Madrone Wall Preservation Committee*

Introduction to the language of birds

10 a.m. to 2:30 p.m. Sunday, April 18

Would you like to understand what the birds are saying? Join naturalists Dan Daly, Elisabeth Neely and Patty Newland at Oxbow Regional Park for this introduction to the fascinating art of interpreting the meaning of bird songs and calls. Using methods learned from renowned tracker Jon Young, this popular class combines modern birding

continued

To register for Metro nature activities online, visit www.oregonmetro.gov/calendar

tools and techniques with ancient awareness skills known to native people worldwide. Class is held outdoors; bring a notepad, sack lunch and something to sit on in the woods. Suitable for adults and teens. Meeting location dependent on weather; ask at the park gate. Registration and program fee of \$10 per person required in advance. There also is a \$5 per vehicle entry fee to the park, payable at the gate. To register, call 503-797-1650 option 2. *Metro*

Homeschool naturalist program

1 to 4 p.m. Wednesdays, April 21 and May 19

Created for home school families, these natural science classes incorporate hands-on discovery and first-hand outdoor experiences with Oregon state science benchmarks. To accommodate families with multiple children, two classes will run simultaneously each day for ages 6 to 9 and 9 to 12. Registration and payment of \$20 per student required in advance; call 503-629-6350. *Tualatin Hills Park & Recreation District*

Earth Day at Cooper Mountain


10 to 11 a.m. Thursday, April 22

Take a walk in Cooper Mountain Nature Park on Earth Day. Learn about the spring wildflowers and signs of the return of the special resident bluebird. Suitable for ages 2 to 5; parent participation required. Registration and payment of \$8 per child required in advance; call 503-629-6350. *Tualatin Hills Park & Recreation District*

Spring bird identification class

7 to 9:30 p.m. Thursday, April 22

Spring brings thousands of migrating birds to our region; some stay to nest and others pass through. Get ready for great spring birding action with this crash course in identifying spring migrants and summer breeders. Metro naturalist James Davis will show slides, play recordings of bird songs and simplify

what may seem like a confusing variety of birds to beginners. This class is excellent preparation for bird walks at Smith and Bybee Wetlands Natural Area. Suitable for adults and teens. Meet in room 370 at Metro Regional Center in Portland. Registration and payment of \$10 per person required in advance; call 503-797-1650 option 2. *Metro* 

Brunch with the birds

10 a.m. to 1 p.m. Friday, April 23

Join the Columbia Slough Watershed Council and Metro naturalist James Davis for a lunchtime birding tour. Hone your bird watching skills while learning about your local watershed and a new stormwater management facility. Lunch provided. Free. Advance registration required; call 503-281-1132. *Metro and Columbia Slough Watershed Council*

Tryon Creek watershed wide event

9 a.m. to 2 p.m. Saturday, April 24

Join friends and neighbors for a day of hands-on restoration and celebration. There will be more than eight restoration sites located throughout the watershed from Tryon Creek Natural Area to the headwaters of the creek near Multnomah Village and out to Lake Oswego. Volunteers will be removing invasive species and planting native plants as part of continuing efforts to improve habitat for threatened steelhead and salmon. Bring work gloves and water. Tools and snacks provided. Lunch provided from 12:30 to 2 p.m. Free. Advance registration for work site preference and lunch required; call 503-636-4398 ext. 121. *Friends of Tryon Creek State Park*

In search of ... the wild Mount Talbert

10:30 a.m. to 12:30 p.m. Sunday, April 25

Explore the springtime beauty of this unique lava dome as you wander through a white oak woodland in search of wildlife, spring blooms and geologic stories in the stones of Mount

Talbert. One of the newest nature parks in the region, Mount Talbert is home to an incredible patchwork of habitats that provide welcome refuge for migrating songbirds such as warblers, tanagers, orioles and others. Learn new awareness skills and put them to the test as you search for the elusive Western gray squirrel, raptor nests and the beginnings of the spring wildflower emergence. Bring your own binoculars or borrow a pair on site. Suitable for ages 10 to adult. Trails are on the rough side and steep in places. Cost is \$5 for adults; under 18 free. Registration and payment required in advance; call North Clackamas Parks and Recreation District at 503-794-8092 at least two weeks before the program date. *Metro*

Birding Killin Wetlands

10 a.m. to 12:30 p.m. Sunday, April 25

Killin Wetlands in Banks, also known to birders as Cedar Canyon Marsh, is a great place to see (or at least hear) three very hard to find marsh birds: American bittern, sora and Virginia rail. Many other common wetland birds are also seen here this time of year. Join naturalist James Davis at this special place protected by Metro's Natural Areas Program. Suitable for adults and children age 10 and older. Directions provided with registration. Registration and payment of \$5 per person required in advance; call 503-797-1650 option 2. *Metro*

Children's Clean Water Festival

7:45 a.m. to 2 p.m. Tuesday, April 27

Volunteers are needed for the 17th annual Children's Clean Water Festival. Held at Portland Community College, Sylvania campus, the festival brings more than 1,000 local fourth and fifth graders together to learn about water science and watershed ecology. No experience necessary; training and lunch provided. Advance registration required; call 503-665-4179. *Rockwood Water People's Utility District*

Urban coyotes 7 to 8:30 p.m. Tuesday, April 27


The howl of coyotes echoing across the urban landscape has become increasingly common in recent years. Gain valuable insights from wildlife specialist Stanley Gehrt from his study of 220 radio-collared coyotes in an urban setting over a six-year period. Meet at Oregon Zoo's banquet center. Registration and payment of \$10 or \$8 for members required in advance; call 503-226-1561. *Oregon Zoo, Audubon Society of Portland and World Forestry Center*

Wildflower identification at

Oxbow noon to 3 p.m. Sunday, May 2

Have you ever wondered about trailside wildflowers and wished you knew their names? Then this class is for you. Learn how to use plant family information and field guides to aid in identification. Half of the class is indoors and the other half is an outdoor exploration of a flower-rich trail. Suitable for adults and teens. Registration and payment of \$10 required in advance. There is a \$5 per vehicle entrance fee to the park. To register, call 503-797-1650 option 2. *Metro*

Warblers of Oregon 7 to 9:30 p.m. Thursday, May 6

One of the most colorful and musical groups of birds to arrive in spring is the warblers. The different species in the Portland area can be quite confusing to beginning and experienced birders alike. Let Metro naturalist and expert birder James Davis make warbler identification easier for you. This class takes place near the peak of warbler migration so you can get out right away and practice your new skills. Suitable for adults and teens. Meet in room 370 at Metro Regional Center. Registration and payment of \$10 per person required in advance; call 503-797-1650 option 2. *Metro* 

Mother's Day birds and blooms of

Canemah Bluff

1 to 3 p.m. Sunday, May 9

Instead of taking flowers to mom this Mother's Day, why not take her to the wildflowers? Join Metro naturalist Dan Daly for a leisurely stroll through Canemah Bluff Natural Area near Oregon City to see and learn about common wildflowers. Enjoy the serenade of nesting song birds and views of the Willamette River and historic Canemah cemetery. Bring binoculars or borrow a pair on site. The walk covers two miles over uneven trails, mostly flat with some inclines. Suitable for adults and children age 6 and older. Registration and payment of \$5 per adult required in advance; call 503-797-1650 option 2. Site directions sent upon registration. *Metro*

Multnomah Weed Watchers training

noon to 2 p.m. Saturday, May 15

Become a Multnomah Weed Watcher and help protect Oregon's landscape by preventing the spread of harmful invasive species that disrupt ecosystems, push out native plants and decrease the value of your land. Learn how to identify, pull and dispose of invasives in the proper way to prevent spreading. Volunteers become part of an Oregon Early Detection Network. Advance registration required; visit www.wmswcd.org. *West Multnomah Soil & Water Conservation District*

Songbird Festival

10 a.m. to 2:30 p.m. Saturday, May 15

Come celebrate migratory songbirds, wildlife and nature at the 14th annual Songbird Festival at Tualatin River National Wildlife Refuge. Everyone is invited for a day of nature walks, hands-on activities, exhibits, wildlife watching, canoe paddles, nature artwork and more. Free. The winners of the Washington County nature and wildlife photo contest will be announced and their photographs displayed. *Friends of the Tualatin River National Wildlife Refuge and U.S. Fish and Wildlife Service*

Songbirds of Mount Talbert

9:30 a.m. to noon Saturday, May 15

Join James Davis, Metro naturalist and expert birder, to catch the peak of spring migration on Mount Talbert, Clackamas County's newest regional park. Forested hills like Mount Talbert are hot spots for migrating songbirds such as warblers, tanagers, orioles and others. Trails can be muddy or steep in places. This birding adventure is suitable for beginning and experienced bird watchers from teens on up. Bring binoculars or borrow a pair on site. Directions provided upon registration. Registration and payment of \$5 required in advance; call North Clackamas Parks and Recreation District at 503-794-8092. *Metro and North Clackamas Parks and Recreation District*

Ethnobotany at Oxbow

12:30 to 4 p.m. Sunday, May 16

Ethnobotany is the study of how humans use plants. Learn the ethics and safety protocols of plant harvest and take a walk in the springtime woods of Oxbow Regional Park to get to know plants traditionally used for food, medicine, baskets and more. Take home a resource list for further study and create cordage and tea from stinging nettles. Meet at the naturalist office. Registration and payment of \$10 per person required in advance. There is a \$5 per vehicle entrance fee to the park. To register, call 503-797-1650 option 2. *Metro*

Tabor to the river: Cycling for clean rivers

6 to 8 p.m. Wednesday, May 19

Want to be a partner for clean rivers and streams and enjoy a group bike ride? Learn about green streets, rain gardens and eeroofs in the Tabor to the river basin. Bicycle helmets mandatory. Free. Registration not required. For more information, call 503-823-5729. *Portland Bureau of Environmental Services and Portland Bureau of Transportation*



Fly Fishing Shop photo

Sandy River Spey Clave

8 a.m. to 5 p.m. May 14, 15 and 16

Come to Oxbow Regional Park for the largest gathering of anglers devoted to two-hand fly rod fishing in the Western Hemisphere. Visit booths displaying the latest tackle or sign up for free casting lessons. View on-the-water casting demonstrations throughout the weekend. Attend Friday's women's day presentations by female instructors followed by a potluck dinner and presentations Friday night. Breakfast and lunch provided Saturday and Sunday. Overnight camping is available in the park on a first-come, first-served basis for \$20 per night (up to 6 people per site). Gates lock at official sunset. Pets are not allowed. Free with a \$5 entrance fee to the park. For more information, call the Fly Fishing Shop at 503-622-4607. *Fly Fishing Shop and Metro*

Connecting our children to the wild

10:30 a.m. to 12:30 p.m. Sunday, May 23

If you are a parent, mentor or teacher who understands how important a vibrant connection to the natural world is for the healthy development of young people, join Metro naturalist Dan Daly for this lively conversation. As school, work, consumer culture and the disappearance of wild areas continue to draw children's time and attention away from the natural world, spring is a great time to learn and remember how to bring nature alive in families, neighborhoods and schools once again. This program shares both resources and techniques that outdoor-oriented adults can draw from in order to support the young people they care about by unfolding the adventure of a lifetime. Childcare for children age 5 and older is available free of charge

during the program. This class is held at Oxbow Regional Park. Registration and \$8 per person required in advance. There is a \$5 per vehicle entry fee payable at the park. To register, call 503-797-1650 option 2. *Metro*


Smith and Bybee Wetlands canoe and kayak tour

8:30 to 11:30 a.m. Sunday, May 23

Join Metro naturalist James Davis and learn about local wildlife and the natural history of the area on a three-hour canoe and kayak tour of the wetlands. Boat, paddle and personal flotation device provided by NW Discoveries. Participants can select solo kayaks, a tandem kayak with a partner or a canoe with a partner. Two adults in a canoe can add one or two children to ride in the middle at reduced cost. Meet at the Smith and Bybee canoe launch.

continued


Registration and payment of \$25 per adult (age 14 and older) and \$5 per child (ages 5 to 13) accompanied by one paid adult required two weeks in advance; call 503-797-1650 option 2. *Metro*

 **Smith and Bybee Wetlands canoe bimiran tour**

12:30 to 2:30 p.m. Sunday, May 23

Try out a canoe bimiran (two canoes lashed together with 2 x 6 boards) with your child for a two-hour paddle on the wetlands with Metro naturalist James Davis. Custom bimirans are very stable and ideal for first timers. Suitable for adults and children age 5 and older. Meet at the Smith and Bybee canoe launch. Registration and payment of \$10 per adult (age 14 and older) and

\$5 per child (ages 5 to 13) accompanied by one paid adult required two weeks in advance; call 503-797-1650 option 2. *Metro*

 **Evening canoe the slough**

6 to 8 p.m. Wednesday, May 26

Join the Columbia Slough Watershed Council for a special evening canoe tour. Explore Whitaker Slough and look for turtles, great blue herons and wood ducks. These guided trips using extra-sturdy canoe bimirans are ideal for families. All equipment provided. Participants have the choice of two starting times; indicate preference for 6 or 7 p.m. Free. Advance registration required; call 503-281-1132. *Columbia Slough Watershed Council*



City of Portland photo

Connect the drops

Something to see on a rainy day! Green features in your neighborhood are hard at work at this time of year. Gear up for a springtime stroll to check out plants and sculptures that clean water in innovative ways and improve the health of the region's rivers and streams. Use Metro's Connect the Drops regional map to find projects near you or join one of the stormwater tours offered by the City of Portland.

www.oregonmetro.gov/nature

www.portlandonline.com/bes



Spring calendar at a glance

WEEKLY

Wednesdays

Tadpole tales, pg. 8

Saturdays

Saturday guided nature hikes, pg. 8

MARCH

- 1 Cooper Mountain nature play time, pg. 8
- 3 Wild about Cooper Mountain, pg. 8
- 4 Organic gardener program, pg. 8
- 6 Interstate 205 planting, pg. 8
- 6 Johnson Creek watershed wide event, pg. 8
- 6 Owl fest, pg. 8
- 6 Wildlife refuge tree planting, pg. 8
- 7 Rain gardens 101, pg. 8
- 10 Wild about Cooper Mountain, pg. 8
- 11 Mammals of Portland, pg. 8
- 13 Lone Fir Pioneer Cemetery historical tour, pg. 9
- 13 Native Plant Center volunteer ventures, pg. 7
- 13 Slough 101, pg. 9
- 13 Spring bird walk at Smith and Bybee, pg. 9
- 13 Wildlife refuge tree planting, pg. 8
- 13 Women in science day, pg. 9
- 15 Cooper Mountain nature play time, pg. 8
- 16 Refuge volunteer training, pg. 9
- 20 Forest Park Day of Stewardship, pg. 9
- 20 Interstate 205 planting, pg. 8
- 20 TogetherGreen volunteer day, pg. 9
- 23 Green cleaning, pg. 9
- 24 Spring break day camp, pg. 9
- 26 Spring break day camp, pg. 9
- 27 Dirt cheap gardening, pg. 10
- 27 Green cleaning, pg. 9
- 27 Native Plant Center volunteer ventures, pg. 7
- 27 Smith and Bybee paddle, pg. 9
- 29 Cooper Mountain nature play time, pg. 8
- 30 Green roofs and living walls for wildlife, pg. 10
- 31 Wild about Cooper Mountain, pg. 8

APRIL

- 1 Native trees of Forest Park, pg. 10
- 1 Washington County photo contest, pg. 10
- 3 Blue Lake Bunny Bonanza Egg Hunt, pg. 10
- 3 Clackamas River salmon refuge project, pg. 10
- 3 Spring bird walk at Cooper Mountain, pg. 10
- 3 Spring bird walk at Smith and Bybee, pg. 9
- 5 Cooper Mountain nature play time, pg. 8
- 8 Bird watching basics for beginners, pg. 10
- 9 Introduction to Sauvie Island Center, pg. 10
- 10 Green gardening fair and native plant sale, pg. 10
- 10 Lone Fir Pioneer Cemetery historical tour, pg. 9
- 10 Native Plant Center volunteer ventures, pg. 7
- 10 Smith and Bybee kayak tour, pg. 10

- 11 Cooper Mountain wildflower walk, pg. 10
- 12 Cooper Mountain nature play time, pg. 8
- 13 Returning condors to Arizona, pg. 11
- 14 Wild about Cooper Mountain, pg. 8
- 17 Earth Day with the StreamTeam, pg. 11
- 17 Gresham bird survey training, pg. 11
- 17 Native Plant Center volunteer ventures, pg. 7
- 17 Naturescaping basics: site planning, pg. 11
- 17 Painted turtle walk, pg. 11
- 17 SOLV IT, pg. 11
- 17 Spring bird walk at Smith and Bybee, pg. 9
- 17 Wildflower tour at Madrone Wall, pg. 11
- 18 Cooper Mountain wildflower walk, pg. 10
- 18 Introduction to the language of birds, pg. 11
- 18 Smith and Bybee paddle, pg. 9
- 19 Cooper Mountain nature play time, pg. 8
- 21 Gresham bird survey training, pg. 11
- 21 Homeschool naturalist program, pg. 12
- 22 Earth Day at Cooper Mountain, pg. 12
- 22 Spring bird identification class, pg. 12
- 23 Brunch with the birds, pg. 12
- 24 TogetherGreen volunteer day, pg. 9
- 24 Tryon Creek watershed wide event, pg. 12
- 25 Birding Killin Wetlands, pg. 12
- 25 In search of the wild Mount Talbert, pg. 12
- 26 Cooper Mountain nature play time, pg. 8
- 27 Children's Clean Water Festival, pg. 12
- 27 Urban coyotes, pg. 12
- 28 Wild about Cooper Mountain, pg. 8

MAY

- 1 Native Plant Center volunteer ventures, pg. 7
- 2 Wildflower identification at Oxbow, pg. 13
- 3 Cooper Mountain nature play time, pg. 8
- 5 Wild about Cooper Mountain, pg. 8
- 6 Warblers of Oregon, pg. 12
- 8 Spring bird walk at Cooper Mountain, pg. 10
- 9 Mother's Day birds and blooms, pg. 13
- 12 Wild about Cooper Mountain, pg. 8
- 15 Multnomah Weed Watchers training, pg. 13
- 15 Native Plant Center volunteer ventures, pg. 7
- 15 Songbird Festival, pg. 13
- 15 Songbirds of Mount Talbert, pg. 13
- 16 Ethnobotany at Oxbow, pg. 13
- 17 Cooper Mountain nature play time, pg. 8
- 19 Cycling for clean rivers, pg. 13
- 19 Homeschool naturalist program, pg. 12
- 22 Painted turtle walk, pg. 11
- 22 Spring bird walk at Smith and Bybee, pg. 9
- 23 Connecting our children to the wild, pg. 13
- 23 Smith and Bybee canoe and kayak tour, pg. 13
- 23 Smith and Bybee canoe bimiran tour, pg. 14
- 26 Evening canoe the slough, pg. 14
- 29 Smith and Bybee paddle, pg. 9

You're invited

There are so many great things to do in the Portland metropolitan area that they won't all fit on these pages. Check out Metro's online calendar for hundreds of nature activities, volunteer ventures, tours, pedals, walks, workshops, seminars and public meetings. Visit www.oregonmetro.gov/calendar.

Places to go

Metro's parks offer wildlife watching, hiking, boating, camping, fishing and more. Visit www.oregonmetro.gov/parks or call 503-797-1850 to get directions and park information, reserve a picnic shelter or plan a field trip.

Sustainable living

Make the region greener at home, in your garden and on the road. Visit www.oregonmetro.gov/sustainableliving for guides to biking, walking, reducing waste, green cleaning and gardening with nature.

Getting rid of stuff

Discover everything you need to know about recycling, composting and disposing of garbage and hazardous waste on Metro's web site. Find your hauler, become a recycling star and help keep your neighborhood clean. Call Metro Recycling Information at 503-234-3000.

Volunteer

As a Metro volunteer, you will be directly involved in improving and protecting the region's great places for people and wildlife now and in the future. Find volunteer stories and opportunities at www.oregonmetro.gov/volunteer.

Participate

Help shape the future of the region by contributing your ideas on land, transportation, recycling, parks, trails and how we grow. Visit www.oregonmetro.gov/participate for public comment opportunities, meeting schedules and more.

Featured places

Blue Lake Regional Park
20500 NE Marine Drive, Fairview
503-665-4995

Oxbow Regional Park
3010 SE Oxbow Parkway, east of Gresham
503-663-4708

Smith and Bybee Wetlands Natural Area
5300 N. Marine Drive, Portland
503-797-1650

Mount Talbert Nature Park
10695 SE Mather Road, Clackamas
503-742-4353

Cooper Mountain Nature Park
18892 SW Kemmer Road, Beaverton
503-629-6350

Metro's natural techniques garden
6800 SE 57th Ave., Portland
503-234-3000

Oregon Zoo
4001 SW Canyon Road, Portland
www.oregonzoo.org
503-226-1561



Cooper Mountain Nature Park provides stunning views of the Tualatin Valley. The park's 3 1/2 miles of trails show off a dazzling variety of wildflowers in spring.

C. Bruce Forster photo

Metro | People places. Open spaces.

Clean air and clean water do not stop at city limits or county lines. Neither does the need for jobs, a thriving economy and good transportation choices for people and businesses in our region. Voters have asked Metro to help with the challenges that cross those lines and affect the 25 cities and three counties in the Portland metropolitan area.

A regional approach simply makes sense when it comes to protecting open space, caring for parks, planning for the best use of land, managing garbage disposal and increasing recycling. Metro oversees world-class facilities such as the Oregon Zoo, which contributes to conservation and education, and the Oregon Convention Center, which benefits the region's economy.

www.oregonmetro.gov



Metro Council

From left: Carl Hosticka, district 3; Rod Park, district 1; Kathryn Harrington, district 4; David Bragdon, Council President; Carlotta Collette, district 2; Robert Liberty, district 6; Rex Burkholder, district 5

Auditor

Suzanne Flynn

On the cover

Flowering tree at Cooper Mountain, C. Bruce Forster photo; and child enjoying the discovery garden at Blue Lake Regional Park, Kent Derek photo.

If you have a disability and need accommodations, call 503-813-7565, or call Metro's TDD line at 503-797-1804. If you require a sign interpreter, call at least 48 hours in advance. Activities marked with this symbol are wheelchair accessible: ♿

Bus and MAX information:

503-238-RIDE (7433)

To be added to the GreenScene mailing list or to make any changes, call 503-797-1650 option 2.



Metro

600 NE Grand Ave.
Portland, OR 97232-2736

ADDRESS SERVICE REQUESTED

Presorted Standard
U.S. Postage
PAID
Portland, OR
Permit No. 1246

Discover GreenScene online



Sign up to get GreenScene by e-mail
www.oregonmetro.gov/greenscene



Subscribe to the GreenScene calendar RSS feed
www.oregonmetro.gov/calendar



Become a fan of GreenScene on Facebook
www.facebook.com/metrogreenscene



Follow GreenScene on Twitter
www.twitter.com/metrogreenscene

Pledge to make your home and yard pesticide-free

Ready to show harmful chemicals the door? Make the "pesticide-free" pledge for your home and garden, and receive a beautiful, long-lasting yard sign that lets the world know. For details, visit www.oregonmetro.gov/garden or call 503-234-3000. Good while supplies last.



Grow Smart, Grow Safe




Enjoy a beautiful, productive garden without toxic chemicals. Metro's updated consumer guide ranks 600 pesticides, fertilizers and soil amendments, helping you find products least hazardous to people, pets and the planet.

For a free copy, call Metro Recycling Information at 503-234-3000 or visit www.oregonmetro.gov/garden. Free copies also available during seminars listed in calendar.

Questions? Call Metro Recycling Information at 503-234-3000, or visit www.oregonmetro.gov/garden.

Metro's natural gardening program is made possible in cooperation with Oregon State University Extension Service Community and Urban Horticulture Program, Clackamas Community College, City of Gresham, City of Portland, Tualatin Hills Park & Recreation District, Oregon Tilth, Tualatin Valley Water District, Mary Woodward Elementary, participating host home gardeners, more than 30 garden supply retailers and many additional individuals, agencies and organizations.

 Metro | *People places. Open spaces.*

Metro, the regional government that serves 1.5 million people who live in the 25 cities and three counties of the Portland metropolitan area, provides planning and other services that protect the nature and livability of our region.

Metro Council David Bragdon, Council President; Rod Park, district 1; Carlotta Collette, district 2; Carl Hosticka, district 3; Kathryn Harrington, district 4; Rex Burkholder, district 5; Robert Liberty, district 6.

Auditor Suzanne Flynn

 **OSU** Extension Service

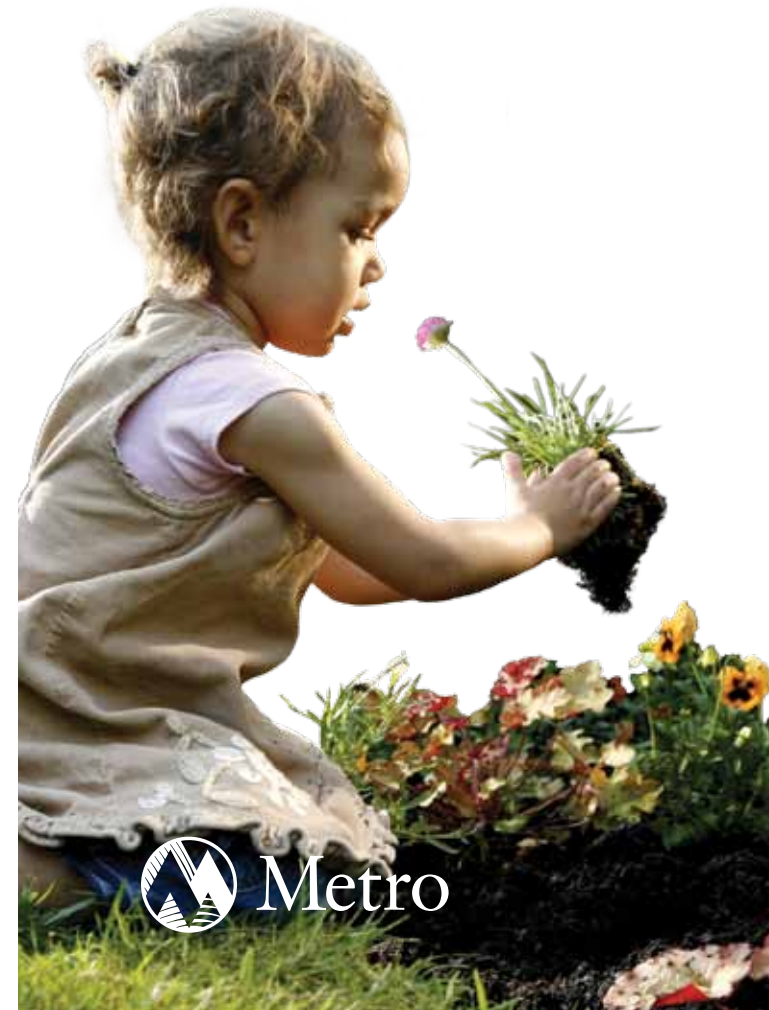
Photos by
Jim Cruce, Kent Derek, C. Bruce Forster, Jerome Hart and Metro staff.

Printed on recycled-content paper. 10012

HEALTHY HOMES. HEALTHY FAMILIES.

Grow green

2010 Natural gardening workshops and resources



Grow a natural garden to protect the ones you love



You can grow a garden that's not only beautiful and abundant but safe for children, pets, forests and streams. Join your many neighbors who care for their yards without pesticides, conserve water

with compost and mulch and choose native plants. With organic gardening, you'll taste the delicious difference when harvesting homegrown foods. Want to learn more? Read on to discover an array of workshops, demonstration gardens and resources.



Jim Cruce photo

Visit your local learning garden

Blue Lake Natural Discovery Garden

Open for self-guided visits 8 a.m. to sunset daily

Drop-in activity sessions (adult supervision required)

- **Toddler times**
9 to 11 a.m. Thursdays in April, May and September
- **All ages**
1 to 5 p.m. weekends and 9 to 11 a.m. Thursdays, June through August

Blue Lake Regional Park, next to the water spray ground
21160 NE Blue Lake Road, Fairview

Free with parking fee

Dig in the soil, smell the flowers, touch the leaves and explore the beauty and ease of a natural garden. Gather ideas to make your yard pesticide-free and friendly for kids, songbirds, lakes and streams. Enjoy make-and-take strawberry planting, water-creature crafting and other drop-in family activities with a garden educator.

Oregon Zoo Backyard Makeover Exhibit

Open daily during zoo hours

Drop-in natural gardening clinics noon to 4 p.m. weekends, April through October

At Oregon Zoo, between the Insect Zoo and Lorikeet Landing

Free with zoo admission

Explore side-by-side "before" and "after" gardens, learning how easy it is to turn a ho-hum yard into a nature-friendly head turner. Get free natural gardening advice from Oregon State University Extension Service Master Gardeners during garden clinic times.



Natural Techniques Demonstration Garden

Open 7 a.m. to 7 p.m. daily

At SE 57th Avenue and Cooper Street, Portland

Seminars 10 to 11:30 a.m. third Saturdays, April through October (except May – see calendar)

Free

Gather design ideas for a yard full of natural beauty. Explore colorful blooms, native plants, edible landscaping and rain garden solutions for stormwater runoff.

Cooper Mountain Demonstration Garden

Open dawn to dusk daily, unless otherwise posted

Cooper Mountain Nature Park
18892 SW Kemmer Road, Beaverton

Free

Visit this ornamental showcase featuring colorful plants that are low-maintenance and wildlife-friendly. Gather design ideas to create a beautiful yard without harmful chemicals.



Water Efficient Demonstration Garden

Open dawn to dusk daily

Clackamas Community College
19600 S. Molalla Ave., Oregon City

Free

Explore diverse garden styles that delight the senses and minimize watering needs. Garden and educational materials created in partnership with Clackamas River Water Providers. For more information, call 503-723-3511.



Get inspired with free workshops featuring local garden experts. Drop-ins welcome per available space, unless registration required. For registration, accessibility or complete listing details, visit www.oregonmetro.gov/garden or call Metro Recycling Information at 503-234-3000.

MARCH

- 3 Organic soil amendments**
6 to 7 p.m. Wednesday
Concentrates Inc., SE Portland
- 6 Vegetable gardening**
9 a.m. to noon Saturday
Milwaukie Center, Milwaukie
Terrific turf without toxics
10 to 11 a.m. Saturday
Garden Fever! NE Portland – registration required
- Edible native plants**
1 to 2 p.m. Saturday
Dennis' Seven Dees, SE Portland
- 7 Planting for frogs, birds and other wildlife**
1 to 2 p.m. Sunday
Bosky Dell Natives, West Linn
- 13 Gardens of eatin'**
10:45 a.m. to 12:45 p.m. Saturday
Cooper Mountain Nature Park, Beaverton
Organic soils and compost
Noon to 1 p.m. Saturday
Naomi's Organic Farm Supply, SE Portland
- 14 Organic soils and compost**
1 to 2 p.m. Sunday
Dennis' Seven Dees, Lake Oswego
- 20 Grow your own organic veggies**
10 to 11 a.m. Saturday
Larsen Farm Nursery, Wilsonville
Pesticide-free pest control
10 to 11 a.m. Saturday
Schedeens, Gresham
Terrific turf without toxics
10 to 11 a.m. Saturday
Ace Hardware, Forest Grove
- 26 Starting veggie seeds**
3 to 4 p.m. Friday
Better Living Show, Expo Center, North Portland



- 28 Grow your own organic veggies**
1 to 2 p.m. Sunday
Dennis' Seven Dees, SW Portland
- 30 Blooms for birds, bees and butterflies**
6:30 to 8 p.m. Tuesday
Oregon Food Bank Eastside Learning Garden, NE Portland

APRIL

- 3 Starting a vegetable garden**
10 to 11 a.m. Saturday
Livingscape Nursery, North Portland
- 5 Blooms for birds, bees and butterflies**
6:30 to 8 p.m. Monday
Berry Botanic Garden, SW Portland
- 10 Gardens for kids and pets**
10 to 11 a.m. Saturday
Larsen Farm Nursery, Hillsboro
- Making great compost**
10 to 11 a.m. Saturday
Linnton Feed & Seed, NW Portland
- Native plants**
10 to 11:30 a.m. Saturday
Covenant Presbyterian Church, Gresham
- Worm composting basics, Green gardening fair**
11 to 11:30 a.m. Saturday
Nature Park Interpretive Center, Beaverton
- 11 Grow your own organic veggies**
1 to 2 p.m. Sunday
Portland Nursery – Stark, SE Portland
- 17 Sustainable gardening essentials**
10 to 11:30 a.m. Saturday
Natural Techniques Demonstration Garden, SE Portland
- Terrific turf without toxics**
10 to 11:30 a.m. Saturday
Cooper Mountain Nature Park, Beaverton
- 24 Organic soils and compost**
10 to 11:30 a.m. Saturday
Clackamas Community College, Oregon City



MAY

- 1 Sustainable gardening essentials**
10 to 11:30 a.m. Saturday
Cooper Mountain Nature Park, Beaverton
- 2 Raised-bed vegetable gardening**
9 to 10 a.m. Sunday
Cornell Farm, SW Portland

- 8 Organic soils and compost**
10 to 11:30 a.m. Saturday
Washington County Fair Complex, Hillsboro

Composting basics
11 a.m. to noon Saturday
Portland Nursery – Division, SE Portland

- 9 Growing fragrant family heirloom plants**
1 to 2:30 p.m. Sunday
Home garden: Corinne Gosnell, Hillsboro

- 15 Raised-bed vegetable gardening**
10 to 11:30 a.m. Saturday
Mary Woodward Elementary, Tigard

Native plants and wildlife
1 to 2 p.m. Saturday
Cedar Hills United Church of Christ, SW Portland

- 16 Fruit tree pollination**
1 to 2 p.m. Sunday
Urban Farm Store, SE Portland

Terrific turf without toxics
1 to 2:30 p.m. Sunday
Home garden: Caroline and Steven Matthews, Sherwood

- 22 Petals without poisons**
9 to 10:30 a.m. Saturday
Nature Park Interpretive Center, Beaverton

Pesticide-free pest control
10 to 11:30 a.m. Saturday
Clackamas Community College, Oregon City

- 23 Grow your own organic veggies**
1 to 2 p.m. Sunday
Boring Square Garden Center, Boring

JUNE

- 5 Water-wise gardening**
9 to 10:30 a.m. Saturday
Nature Park Interpretive Center, Beaverton
- Blooms for birds, bees and butterflies**
10 to 11 a.m. Saturday
Drake's 7 Dees, SE Portland
- 12 Terrific turf without toxics**
10 to 11:30 a.m. Saturday
Washington County Fair Complex, Hillsboro
- Blooms for birds, bees and butterflies**
10 to 11:30 a.m. Saturday
Blue Lake Regional Park, SE Portland



- 13 Organic soils and compost**
1 to 2 p.m. Sunday
Farmington Gardens, Hillsboro
- 19 Pesticide-free pest control**
10 to 11:30 a.m. Saturday
Natural Techniques Demonstration Garden, SE Portland

- 20 Water-wise gardening**
1 to 2 p.m. Sunday
Buffalo Gardens, NE Portland

- 26 Water-wise gardening**
10 to 11:30 a.m. Saturday
Tualatin Valley Water District, Beaverton

Water-wise gardening
10 to 11:30 a.m. Saturday
Clackamas Community College, Oregon City

- 27 Organic soils and compost**
1 to 2:30 p.m. Sunday
Home garden: Kathleen and Ron Fortune, Gresham

JULY

- 10 Native plants**
11 a.m. to noon Saturday
Echo Valley Natives, Oregon City

- 11 Sustainable gardening essentials**
1 to 2:30 p.m. Sunday
Home garden: Marcia and Dennis Peck, Beaverton

- 17 Organic soils and compost**
9 to 10:30 a.m. Saturday
Cooper Mountain Nature Park, Beaverton

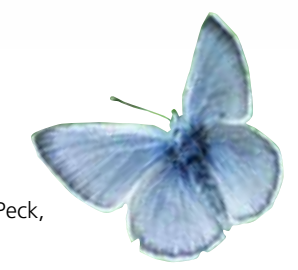
Terrific turf without toxics
10 to 11:30 a.m. Saturday
Natural Techniques Demonstration Garden, SE Portland

- 18 Composting basics**
1 to 2 p.m. Sunday
Pistils Nursery, North Portland

- 24 Planting vegetables for winter harvest**
10 to 11 a.m. Saturday
Flat Creek Garden Center, Gresham

Native plants
10 to 11:30 a.m. Saturday
Clackamas Community College, Oregon City

- 25 Growing fruit in any yard**
1 to 2:30 p.m. Sunday
Home garden: Glen Andresen, NE Portland



- 31 Edible landscaping**
1 to 2 p.m. Saturday
Hughes Water Gardens, Tualatin

AUGUST

- 11 Grow your own organic veggies**
6 to 7:30 p.m. Wednesday
Oregon Tilth Organic Education Center, Lake Oswego

- 14 Water-wise gardening**
10 to 11:30 a.m. Saturday
Washington County Fair Complex, Hillsboro

- 15 Edible landscaping, naturally**
1 to 2:30 p.m. Sunday
Home garden: Monica Mumper, Oregon City

- 21 Petals without poisons**
10 to 11:30 a.m. Saturday
Natural Techniques Demonstration Garden, SE Portland

- 28 Gardens for kids and pets**
10 to 11:30 a.m. Saturday
Clackamas Community College, Oregon City

SEPTEMBER

- 11 Cooking from the garden**
11 a.m. to 1 p.m. Saturday
Home garden: Charlene Murdock and Richard White, Forest Grove

- 12 Parking-strip paradise: water-saving natives**
1 to 2:30 p.m. Sunday
Home garden: Kym Pokorny, North Portland

- 18 Winter cover crops for soil health**
10 to 11:30 a.m. Saturday
Natural Techniques Demonstration Garden, SE Portland

- 25 Blooms for birds, bees and butterflies**
10 to 11:30 a.m. Saturday
Clackamas Community College, Oregon City

OCTOBER

- 9 Grow your own organic veggies**
10 to 11:30 a.m. Saturday
Washington County Fair Complex, Hillsboro

- 16 Transplanting perennials and natives**
10 to 11:30 a.m. Saturday
Natural Techniques Demonstration Garden, SE Portland



Go natural, get a discount!

Save \$5 off a total \$20 purchase of compost, native plants or hand-weeding tools. Discount coupon available during free seminars listed in the calendar section, or visit www.oregonmetro.gov/garden.

Many thanks to the participating retailers:

- | | |
|-------------------------------------------------------------------|--------------------------------------------------------------|
| Ace Hardware , Forest Grove and Milwaukie | The Garden Corner , Tualatin |
| Bark Blowers , Tigard | Garden Fever! Portland |
| Beaumont Hardware , Portland | Gardener's Choice , Tigard |
| Best Buy in Town | Hughes Water Gardens , Tualatin |
| Landscape Supply , Hillsboro | Landscape Products & Supply , Hillsboro |
| Boring Square Garden Center , Boring | Larsen Farm Nursery , Wilsonville |
| Bosky Dell Natives , West Linn | Linnton Feed & Seed , Portland |
| Buffalo Gardens , Portland | Livingscape Nursery , Portland |
| Clackamas Compost Products , Clackamas | Mt. Scott Fuel , Boring and Portland |
| Concentrates Inc. , Portland | Naomi's Organic Farm Supply , Portland |
| Cornell Farm , Portland | Pistils Nursery , Portland |
| Dennis' Seven Dees , Cedar Hills, Lake Oswego and Portland | Portland Nursery , Portland |
| Drake's 7 Dees , Portland | S&H Landscape Supplies & Recycling , Tualatin |
| Echo Valley Natives , Oregon City | Schedeens , Gresham |
| Farmington Gardens , Beaverton | Urban Farm Store , Portland |
| Flat Creek Garden Center , Gresham | |

Questions? Call Metro Recycling Information at 503-234-3000 for free group presentations, specially priced compost bins, free natural gardening publications and more, or visit www.oregonmetro.gov/garden.