

BEFORE THE METRO COUNCIL

FOR THE PURPOSE OF AMENDING THE) RESOLUTION NO. 10-4161
AGREEMENT WITH CLACKAMAS COUNTY)
REGARDING THE DESIGNATION OF URBAN) Introduced by Councilor Harrington
AND RURAL RESERVES)

WHEREAS, Metro entered into an intergovernmental agreement (IGA) with Clackamas County on February 25, 2010, for the purpose of designating urban reserves and rural reserves in Clackamas County, pursuant to ORS 195.141; and

WHEREAS, the IGA between Metro and Clackamas County included a map ("IGA map") showing the urban and rural reserves the governments would designate in Clackamas County by ordinance following adoption of the IGA; and

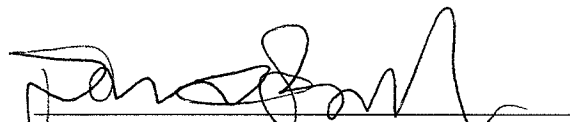
WHEREAS, the IGA between Metro and Clackamas County provides for revisions to the IGA map that may become advisable in response to public comment received during proceedings leading to adoption of ordinances to implement the IGA; and

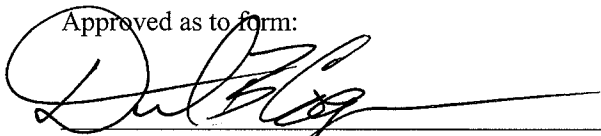
WHEREAS, elected officials of Metro, Clackamas County, Multnomah County and Washington counties followed the provisions in the IGAs to consider proposed revisions to the IGA map of urban and rural reserves in Clackamas County and the officials from Metro and Clackamas County recommend revisions to the IGA map; now, therefore

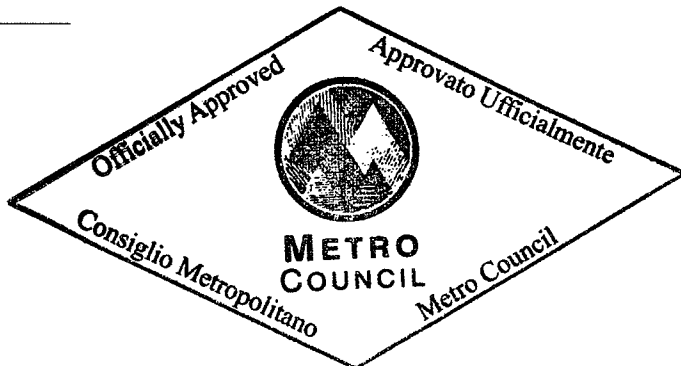
BE IT RESOLVED that the Metro Council

1. Approves the revisions to the IGA map of urban and rural reserves in Clackamas County, attached as Exhibit A, as an amendment to the February 25, 2010, IGA with the county.
2. Authorizes Council President David Bragdon to sign an amended IGA with Clackamas County with a revised map consistent with Exhibit A to this resolution.

ADOPTED by the Metro Council this 3rd day of June, 2010.


David Bragdon, Council President

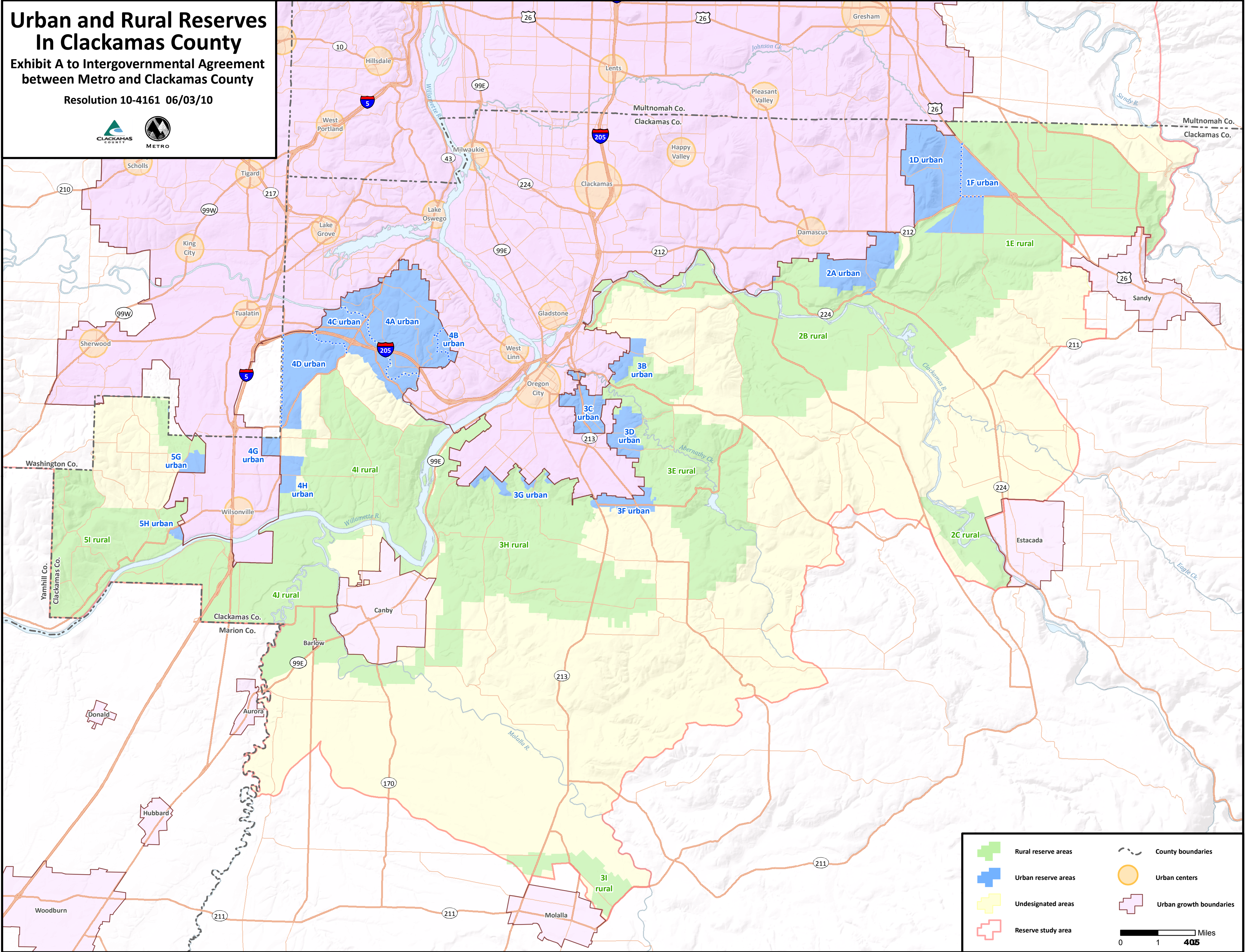
Approved as to form:

Daniel B. Cooper, Metro Attorney



Urban and Rural Reserves In Clackamas County

Exhibit A to Intergovernmental Agreement
between Metro and Clackamas County

Resolution 10-4161 06/03/10



	Rural reserve areas		County boundaries
	Urban reserve areas		Urban centers
	Undesignated areas		Urban growth boundaries
	Reserve study area		Miles 0 1 405