



## Natural Areas Program Performance Oversight Committee

---

**Meeting:** New member orientation  
**Date:** September 20, 2010  
**Time:** 11 a.m. to 1:30 p.m.  
**Location:** Metro Regional Center, Room 401

---

11:00	<b>Welcome and introductions</b>	Committee Chair Linda Craig
11:05	<b>Role of Committee for the Metro Council</b>	Councilor Kathryn Harrington
11:15	<b>Overview of Natural Areas Program</b>	Kathleen Brennan-Hunter/Jim Desmond, Metro
12:00	<b>History and role of the Oversight Committee</b>	Committee Chair Linda Craig
12:15	<b>Work of the Committee to date</b> (review materials, performance measures, financial report, etc.)	Kathleen Brennan-Hunter, Metro
12:45	<b>Q &amp; A</b>	
1:00	<b>Wrap up/overview of upcoming meetings</b>	Committee Chair Linda Craig
1:30	<b>Adjourn</b>	

**Lunch will be provided.**

*Validated parking is available in the parking structure accessed from Northeast Irving Street.  
Please have parking ticket validated at Metro reception desk as you leave.*



## **Natural Areas Program Performance Oversight Committee**

### **New Member Orientation**

September 20, 2010

---

**Committee members in attendance:** Drake Butsch, Linda Craig (committee chair), Brad Fletcher, Walt McMonies, Rick Mishaga, Shawn Narancich, Andrew Nordby, David Pollock, Autumn Rudisel, Kendra Smith, Cam Turner

**Metro:** Councilor Kathryn Harrington, Kathleen Brennan-Hunter, Tim Collier, Jim Desmond, Ashley McCarron

---

### **Welcome and introductions**

Kathleen Brennan-Hunter welcomed the committee and thanked them for coming. Committee members introduced themselves and provided a brief background.

### **Role of Committee for the Metro Council**

Councilor Harrington welcomed the committee and outlined how the committee assists the Metro Council in overseeing the performance of the Natural Areas Program. She noted that the committee ensures regional politics are not a factor in program decisions. David Pollock agreed that he has found the no-politics policy to be true. Councilor Harrington attends most committee meetings.

### **Overview of Natural Areas Program**

Kathleen distributed and briefly discussed Resolution No. 06-3672B which sets out the parameters for the bond measure. She discussed the program's components (regional acquisition, local share and capital grants) and Jim Desmond gave an overview of The Intertwine and how it relates to the Natural Areas Program (see attached PowerPoint presentation).

### **History and role of the Oversight Committee**

Linda Craig reflected on the history of the committee and discussed the committee's two reports and several topics the committee has focused on to date.

### **Ethical responsibilities**

Program attorney Ashley McCarron distributed and reviewed Metro's ethical standards memorandum. She requested members sign and return the acknowledgement page. She asked that members inform Chair Linda Craig of any conflicts of interest.

### **Work of the Committee to date**

Kathleen discussed several reports that are periodically sent to members, including acquisition and stabilization reports, income statements and closing memos. Kathleen also discussed the CD that was distributed. In addition to the refinement plans for each of the 27 target areas, the CD also includes minutes from all Oversight Committee meetings, various reports and legislation related to the program. Kathleen noted that Metro is working with an external consultant on a comprehensive database.

**Next steps**

Linda reiterated the charge of the committee:

**An independent citizen advisory committee shall review progress in the acquisition of regional target areas, local share project implementation and grant administration. Res. 06-3672B**

Councilor Harrington added that the committee has also reported to the Metro Council, which has in turn made suggestions of topics they would like to see the committee review to ensure their constituents' money is well spent. Jim noted that committee members each bring some specific knowledge to the committee, including real estate, law, finance/accounting, biological expertise, etc. He and Tim Collier discussed current bond spending and the potential for a third bond.

Linda discussed the Metro Council's recent suggestions for committee review:

- Staffing and program overhead
- Progress by target area – regional equity
- Unusual circumstances clause – review past instances
- Bond sale – sequencing of bond sale and cash management

Linda would like the committee's work plan to also include review of stabilization funding, partnership opportunities and continued development of performance measures. She noted that the work plan will be discussed in more detail at the Oct. 12 committee meeting.

**Upcoming meetings**

The next regular committee meeting is **9 a.m. to noon, Tuesday, Oct. 12 in the Council Chambers**. Linda distributed a survey for members to list their preferences for meeting days and times. She expects to hold approximately 5 meetings per year.

**Adjournment**

The meeting adjourned at 1:20 p.m.

**Minutes recorded by Marybeth Haliski.**




## Natural Areas Program

Presented to the Natural Areas Program Performance Oversight Committee


September 20, 2010



### 1995 Open Spaces, Parks and Streams bond measure



- 62% voted “yes”
- \$135.6 million total
- 8,120 acres and 74 miles of river and stream frontage
- \$25 million funded over 100 local neighborhood projects



### 1995 Open Spaces, Parks and Streams bond measure



- One million trees and shrubs planted
- 50,000 volunteer hours donated to natural areas
- \$2 million in grant funds leveraged for restoration




### 2006 Natural Areas bond measure



- Key messages tested
- Ballot title tested
- Size of measure tested
- Blue Ribbon Committee
- Public outreach/ community meetings
- Grassroots, professional campaign



### The 2006 vision



- Build on investment and success of 1995 bond measure
- Protect water quality and critical habitat
- Save the best of what’s left
- Secure a legacy for future generations



### 2006 Natural Areas bond measure – \$227.4 million



- Regional natural areas, trails and greenway acquisition (\$168.4 million)
- Local acquisition and natural area improvements (\$44 million)
- Capital grant program for neighborhood projects (\$15 million)



**2006 Natural Areas bond measure – broad support**



- Nearly 60% in favor
- Largest land acquisition program approved in the U.S. in 2006 for a region of our size



**2006 Natural Areas bond measure – accountability and fiscal management**



- Metro AAA bond rating reduced cost to tax payers (\$.17/\$1,000)
- Metro AAA bond rating increased amount of bonds (\$6-8 million)
- Citizen Oversight Committee, annual audits as directed by voters



**Regional program – \$168.4 million**



- Protect larger, more significant natural areas
- Secure regional trail corridors
- Water quality, habitat protections



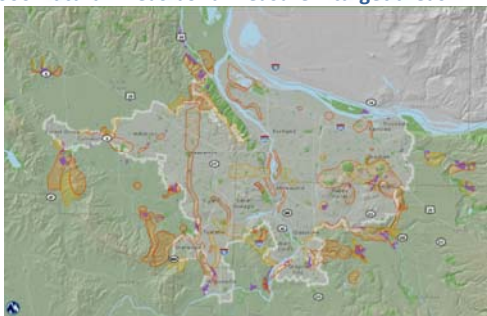
**Protecting regional natural areas**



- Water quality
- Habitat value
- Rarity
- Parcel size
- Restoration
- Connectivity
- Scenic resources
- Public access
- Partnerships



**2006 Natural Areas bond measure – target areas**



**2006 Natural Areas bond measure – refinement and public involvement process**



- 27 target areas and trails
- Scientific research and assessments
- Stakeholder interviews
- 8 community meetings
- 1,000+ surveys completed
- 3,000+ website visitors (unique visits)
- Acquisition plans adopted by Council resolution





### Regional share accomplishments

- 61 transactions
- 2,500+ acres
- 15 miles of river and stream frontage





### Local projects – \$44 million

- Direct “pass through” to local governments
- Trail design and construction
- Land acquisition
- Habitat restoration
- Improve access to nature
- Environmental education facilities






### Local share accomplishments

**\$16.5 million spent to date (38%)**

**Spring Park improvements**  
City of Milwaukie  
Total project cost: \$83,747  
Local Share funds used: \$80,000



**Grace Johnson Trust**  
16.87 acre acquisition  
City of Hillsboro  
Total project cost: \$329,649  
Local Share funds used: \$329,649




### Capital grant program – \$15 million

- “Re-nature” neighborhoods
- Engage communities
- Build partnerships and leverage resources
- Improve water quality, fish and wildlife habitat
- Increase access to nature
- Innovative projects and design solutions





### Capital grant accomplishments

**\$3.3 million awarded to date (12 projects)**


**Nadaka Nature Park Acquisition**  
City of Gresham  
Total project cost: \$660,000  
Capital grant award: \$220,000




**Humboldt Learning Garden**  
Lower Col. River Estuary Partnership  
Total project cost: \$99,000  
Capital grant award: \$33,686




### What is the Intertwine?

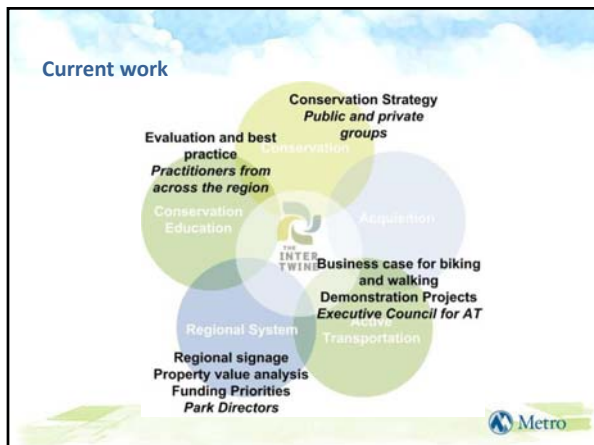
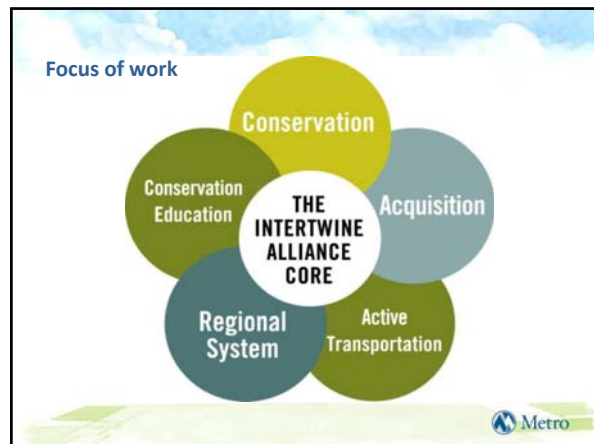


- a place
- a way of doing business
- a focus of work



### Collaboration

Logos of partner organizations: Clackamas County, Happy Valley, KEEN, Barlow Trail Association, and others.



### Some Intertwine accomplishments

- Trails BRC changed paradigm, helped create Active Transportation
- Marketing campaign sponsors include Keen Footwear and TriMet
- 26 park directors are meeting to collaborate on problems and solutions

[www.TheIntertwine.org](http://www.TheIntertwine.org)

### History and role of the Oversight Committee

October 2008 **A clear view**  
A report to the community from the Natural Areas Program Performance Oversight Committee

March 2010 **Staying on course**  
A report to the community from the Natural Areas Program Performance Oversight Committee

### Work of the Committee to-date

#### 2006 Natural Areas Program Acquisitions (including purchase price)

Area	Acquire	Area	Purchase Price	Acquisition Status	County	Acres	Total Acres	% State	% Metro	% Other
<b>Albany/Forest West Creek</b>	Goal: 238 acres									
2006	238	1,100,000	100%	Completed	Clatsop	238	238	100%	0%	0%
<b>Handmade</b>	0	0	0%	0%	0%	0	0	0%	0%	0%
<b>Clatsop Forest</b>	Goal: 450 acres									
2006	450	2,000,000	100%	Completed	Clatsop	450	450	100%	0%	0%
<b>Clatsop Ridge to Ridge</b>	Goal: 450 acres									
2006	450	2,000,000	100%	Completed	Washington	450	450	100%	0%	0%
2007	0	0	0%	0%	0%	0	0	0%	0%	0%
<b>Clatsop Ridge Forest Area</b>	Goal: 450 acres									
2006	450	2,000,000	100%	Completed	Washington	450	450	100%	0%	0%
<b>Handmade</b>	0	0	0%	0%	0%	0	0	0%	0%	0%
<b>Clatsop River (Bull) and Overlook</b>	Goal: 450 acres									
2006	450	2,000,000	100%	Completed	Clatsop	450	450	100%	0%	0%
2007	0	0	0%	0%	0%	0	0	0%	0%	0%
<b>Clatsop River</b>	Goal: 450 acres									
2006	450	2,000,000	100%	Completed	Clatsop	450	450	100%	0%	0%
<b>Handmade</b>	0	0	0%	0%	0%	0	0	0%	0%	0%
<b>Clatsop Slough</b>	Goal: 20 acres									
2006	20	1,000,000	100%	Completed	Washington	20	20	100%	0%	0%
2007	0	0	0%	0%	0%	0	0	0%	0%	0%
<b>Clatsop Slough</b>	Goal: 20 acres									
2006	20	1,000,000	100%	Completed	Washington	20	20	100%	0%	0%
<b>Handmade</b>	0	0	0%	0%	0%	0	0	0%	0%	0%
<b>Butte and Willapa River Confluence</b>	Goal: 100 acres									
2006	100	5,000,000	100%	Completed	Washington	100	100	100%	0%	0%
<b>Handmade</b>	0	0	0%	0%	0%	0	0	0%	0%	0%

**2008 Natural Areas Bond Fund**  
Summary of Revenues, Expenditures and Changes in Fund Balance (Continued)

Account	FY08		FY09		FY10 as of		Program Total
	Actual	Encum	Actual	Encum	Actual	Actual	
Recurring Fund Balance							
Revenues							
State Revenue	130,670,390	0	0	0	0	0	130,670,390
General Fund	1,917,230	5,850,500	2,000,000	822,215	822,215	822,215	4,902,890
Other Revenues	192,000	197,500	2,225,000	79,263	79,263	79,263	3,293,546
<b>Subtotal Revenues</b>	<b>132,869,620</b>	<b>6,075,000</b>	<b>2,227,200</b>	<b>931,578</b>	<b>931,578</b>	<b>931,578</b>	<b>138,895,804</b>
Expenditures							
Capital Outlay	117,000	4,300	200,000	5,300	420,215	5,300	1,045,730
Staff Costs	1,100	0	0	0	4,500	4,500	101,141
Materials & Supplies	1,500	0	2,750	0	1,000	0	10,350
Capital Costs	1,900	0	20,750	0	1,970	0	60,750
<b>Sub Total</b>	<b>121,500</b>	<b>4,300</b>	<b>223,700</b>	<b>5,300</b>	<b>432,690</b>	<b>9,300</b>	<b>1,218,371</b>
Debt Obligations							
Staff Costs	0	5,400	412,000	5,000	420,215	5,000	1,001,730
Materials & Supplies	48,750	0	160,750	0	100,474	0	220,225
<b>Subtotal</b>	<b>48,750</b>	<b>5,400</b>	<b>572,750</b>	<b>5,000</b>	<b>520,689</b>	<b>5,000</b>	<b>1,221,955</b>
Capital Projects							
Staff Costs	15,750	3,400	140,250	3,400	140,250	3,400	320,141
Materials & Supplies	204	0	177,400	0	360,500	0	700,615
Expenditures to Subcontract	450,000	0	4,700,000	4,300,000	4,879,269	4,300,000	14,100,789
<b>Subtotal</b>	<b>465,954</b>	<b>3,400</b>	<b>5,260,500</b>	<b>4,303,400</b>	<b>5,160,069</b>	<b>4,303,400</b>	<b>15,121,645</b>
Capital Projects							
Staff Costs	0	6,847	93,000	6,847	93,302	6,847	197,340
Materials & Supplies	0	1,400	1,900	1,900	300	300	5,901
Grant Payments	0	0	40,750	0	100,000	0	379,250
<b>Subtotal</b>	<b>0</b>	<b>8,247</b>	<b>135,650</b>	<b>8,747</b>	<b>193,602</b>	<b>7,147</b>	<b>582,831</b>
Debt Issuance Costs	200,000	0	0	0	0	0	200,000
Subtotal	1,477	0	0	0	0	0	3,300
Materials & Supplies	300,000	0	80,000	0	0	0	407,000
Grant Admin Costs	230,000	4,837	107,044	4,837	460,722	4,837	1,300,104
Staff Costs	30,000	0	100,400	0	100,400	0	300,120
Interest Expense (Cost)	80,000	0	100,000	0	400,000	0	1,400,000
<b>Subtotal</b>	<b>640,000</b>	<b>4,837</b>	<b>387,444</b>	<b>4,837</b>	<b>961,122</b>	<b>4,837</b>	<b>3,400,324</b>
<b>Subtotal Expenditures</b>	<b>2,664,700</b>	<b>30,147</b>	<b>12,147,600</b>	<b>12,147,600</b>	<b>12,147,600</b>	<b>12,147,600</b>	<b>36,147,600</b>
Ending Fund Balance	122,200,940	6,075,000	11,972,200	6,075,000	60,898,216	6,075,000	60,898,216
Reconciliation to TPL							
Capital Assets	10,000	0	0	0	0	0	0
Other Assets	0	0	0	0	0	0	0
Other Liabilities	0	0	0	0	0	0	0
<b>Reconciliation Total</b>	<b>112,200,940</b>	<b>6,075,000</b>	<b>11,972,200</b>	<b>6,075,000</b>	<b>60,898,216</b>	<b>6,075,000</b>	<b>60,898,216</b>

**Metro | Memo**

Date: January 6, 2010  
 To: Board of Directors, Council President  
 From: Kathleen Brennan, Director, Natural Areas Program Director  
 Re: Natural Areas Program Bond Issuance

**Request:** Chehalis Ridge to Bridge  
**File Number:** 09-012  
**Subject:** Trust for Public Land  
**Ownership Type:** Private  
**Average:** 1,143 acres  
**Target Area Average:** 1,143  
**Target Area Average Goal:** 400 acres

The request meets the requirements for this target area in the following way:

**Reference Plan Goal:**  
 The new Chehalis Ridge Natural Area would be a 1,143-acre site, which would be a significant addition to the Trust for Public Land's portfolio of natural areas. The site is located in the Chehalis River watershed, which is a high priority area for the Trust's conservation efforts. The site is also a high priority area for the Trust's conservation efforts. The site is also a high priority area for the Trust's conservation efforts.

**Water quality:**  
 An initial inspection of the property indicates there are approximately 100 acres of potential water quality and wildlife habitat benefits. The site is located in the Chehalis River watershed, which is a high priority area for the Trust's conservation efforts. The site is also a high priority area for the Trust's conservation efforts. The site is also a high priority area for the Trust's conservation efforts.

**Wildlife habitat connectivity:**  
 The site is located in the Chehalis River watershed, which is a high priority area for the Trust's conservation efforts. The site is also a high priority area for the Trust's conservation efforts. The site is also a high priority area for the Trust's conservation efforts.

**Public access potential:**  
 The site is located in the Chehalis River watershed, which is a high priority area for the Trust's conservation efforts. The site is also a high priority area for the Trust's conservation efforts. The site is also a high priority area for the Trust's conservation efforts.

