



Meeting: Natural Areas Program Performance Oversight Committee
Date: October 12, 2010
Time: 9 a.m. to noon
Location: Metro Regional Center, Council Chambers

9:00	Welcome and introductions	Linda Craig
9:10	Target area progress report	Kathleen Brennan-Hunter
10:15	Conclusions, questions for follow-up and recommendations	Committee discussion
10:30	Break	
10:40	Overview of the program's priorities for the year	Kathleen Brennan-Hunter Jim Desmond
11:15	Oversight Committee work plan for the year <i>These topics have been suggested for our review:</i> <ul style="list-style-type: none">• Progress by target area• Staffing and program overhead• Bond sale sequence and cash management• Performance measures/database• Unusual circumstances clause• Stabilization• Partners and future management	Committee discussion
Noon	Adjourn	

Coffee, pastries and fruit will be provided.

Validated parking is available in the parking structure accessed from Northeast Irving Street.
Please have parking ticket validated at Metro reception desk as you leave.



Metro | Minutes

Natural Areas Program Performance Oversight Committee

October 12, 2010

Committee members in attendance: Drake Butsch, Michelle Cairo, Bridget Cooke, Linda Craig (committee chair), Christine Dupres, Kay Hutchinson, Walt McMonies, Rick Mishaga, Sean Narancich, Andrew Nordby, Norman Penner, Autumn Rudisel, Kendra Smith, Cam Turner, Steve Yarosh

Committee members excused: Dean Alterman, John Esler, Brad Fletcher, Sindy Maher, David Pollock, Dietra Stivahtis

Metro: Councilor Kathryn Harrington, Kathleen Brennan-Hunter, Tim Collier, Jim Desmond, Brian Kennedy, Heather Kent, Ashley McCarron

Welcome and introductions

Committee chair Linda Craig welcomed the committee and thanked them for coming.

Target area progress report

Kathleen Brennan-Hunter discussed the refinement plans and provided an overview of acquisition progress in each of the 27 target areas (see attached presentation). Councilor Harrington noted that the refinement plans are very important and help to ensure that regional politics are not a factor in program decisions.

Conclusions, questions for follow-up and recommendations

Shawn Narancich inquired about Metro's specific goals for the properties. Jim Desmond said that each refinement plan has specific goals. Many refinement plan goals are very habitat oriented, while in some target areas the refinement plans make clear that Metro is trying to assemble land to eventually develop a park.

Bridget Cooke asked if there is public access to the Killin Wetlands and who manages the property. Kathleen replied that the property does not have formal public access, but many people use it for bird watching. Jim said that developing more suitable access to the Killin Wetlands would be high on his list, but for now Metro does not have the necessary funds. Land use issues prevent stop-gap measures such as putting gravel down in the parking area. The area is managed by Metro.

Walt McMonies noted that \$58 million had been spent to date and asked if that was on track for the acres of land, habitat quality, etc. that Metro wanted to acquire by the end of the program. Jim said he believes Metro is on course, maybe a little ahead. Kathleen said the overall goal is 3500-4500 acres and Metro has acquired 2500 acres to date. Performance measures help to demonstrate how each acquisition meets the target area goals.

Autumn Rudisel suggested the 1140-acre Chehalem Ridge acquisition skews the numbers and would like to review the acquisition totals without Chehalem. She also asked if there will be a rollup report/graph showing all acquisitions. Kathleen said Metro is developing a database which will produce such reports.

Cam Turner inquired about other strategic goals, besides acres. Jim said connectivity, access to nature, habitat quality, etc. are all basic parameters that were the basis of the refinement plans.

Bridget Cooke asked about partnerships for maintaining and managing properties. Kathleen said within the refinement plans there are some partnership goals and that partnership is fundamental to what Metro does. There are a lot of opportunities for Metro to leverage and be strategic in working with other

agencies. Properties are often managed by a local jurisdiction following acquisition and stabilization. Bridget asked if there was a procedure in place to evaluate the partnerships over time. Kathleen said this is a very active conversation among her staff.

Cam Turner asked if the data is self-supported or if there is any outside verification. Kathleen said the committee's diversity of experience is helpful, and is why she includes them in the group of Metro Councilors and staff who receive the acquisition closing memos. Cam asked if there are any areas that should be verified by outside sources. Kathleen discussed the performance measure criteria, which includes habitat classification standards that Metro staff use to rate each acquisition. Jim noted that if one of Metro's regional partners questioned an acquisition it would certainly be brought to his attention, but there is no one entity that is tracking the refinement plans vs. the land Metro purchases. Drake Butsch suggested expanding the closing memo distribution list to include some of Metro's regional partners. Kathleen offered to arrange additional field trips so members can familiarize themselves with some of Metro's recently acquired property. Linda Craig suggested a field trip to several areas with a group of independent scientists to see how the performance measurement charts compare with their assessments. Rick Mishaga noted that scientists tend to have different views of the same habitats and that the committee should assess *how* Metro evaluated each acquisition, not the various ways they *could* be evaluated. Kendra Smith concurred.

Cam Turner asked how the refinement plans were formulated. Kathleen explained the refinement process, including the extensive stakeholder and public meetings and surveys.

In summary, Linda Craig noted that the target area performance measures are subjective, and recommended a review by independent scientists of the performance measure criteria and how it is being applied. In addition, the committee requested a total acreage report without the Chehalem Ridge acquisition.

Overview of the program's priorities for the year

Kathleen discussed several of the projects on Metro's agenda.

- Finalize and implement program communications plan to demonstrate progress, transparency and accountability to public.
- Continue to develop and refine performance measures and data management. She noted that besides regional acquisition, performance measure criteria have been created for trails acquisition and capital grants awards. In addition, she plans a report showing performance measures across target areas.
- Continue to improve and make progress in each area of the program:
 - Regional acquisition – be proactive and continue landowner outreach.
 - Local share – coordinate with local partners and provide them with the tools they need to support their acquisition efforts.
 - Capital grants – continue outreach efforts and technical support for applicants.
- Focus on local partnerships to ensure they are functioning as they should.

Kathleen and Tim Collier reviewed the financial report (attached). Linda Craig asked what the interest rate on the bond funds is and if there were any negatives to not spending the initial bond sale funds within three years. Tim indicated Metro expects no negative consequences for failing to spend the entire amount. He was unsure about the exact interest rate but will make sure this is communicated to the committee at the next meeting. Kathleen noted that Tim has recently been appointed Metro's deputy chief financial officer and introduced Brian Kennedy, who replaces Tim as finance manager. Brian will email the financial statement to members for their review prior to each meeting.

Kendra Smith asked for more information on what the local jurisdictions have been using their local share funds for. Kathleen said there are closing memos for the completed projects. Jim noted that some of the

jurisdictions have revised their proposed project lists. Kendra requested a report similar to the acquisition/stabilization report listing jurisdiction, project, amount spent, etc. Autumn Rudisel suggested adding another column for the amount allocated to each jurisdiction.

Oversight Committee work plan for the year

Linda Craig discussed the proposed work plan (attached). The first four topics were suggested by former Council President David Bragdon and the Metro Council. Several of the topics will lend themselves to subcommittees. Linda will contact committee members about potential subcommittee assignments (see partial list below).

- Staffing and program overhead – The committee has reviewed these costs each year. Currently, administrative costs are 7.36%. The committee will explore how staff time is allocated and determine whether administrative costs are appropriate. Councilor Harrington noted that staff costs were determined using best practices and the committee should review whether program staff is sized correctly. A report is scheduled for the December meeting. **Subcommittee: Drake Butsch, Michelle Cairo**
- Progress by target area/database/performance measures – The committee will review progress by target area and determine the appropriateness of program performance measures, as well as assist staff with proposed database parameters (see discussion above). A February report is scheduled. **Subcommittee: David Pollock, Walt McMonies, Linda Craig**
- Unusual circumstances clause – Metro’s chief operating officer has authority to approve deals that meet the standards of the program work plan (included on the committee’s CD). Staff must present all unusual circumstances to the Metro Council for approval. Council members asked that this topic be reviewed because it is the only area of the program in which they are directly involved. The committee should determine if political considerations are a factor. A report is scheduled for April. **Subcommittee: Cam Turner, Autumn Rudisel**
- Bond sale sequence and cash management – See discussion above. The full committee will hear a report from staff at the December meeting. Whether a subcommittee is needed to follow up will be determined in December.
- Stabilization – \$881,850 has been spent to date to improve properties following acquisition. The committee will determine if bond monies are being spent in a way to ensure best practices. **Subcommittee: Kendra Smith, Rick Mishaga**
- Partners and future management – The committee could explore whether appropriate partnerships have been pursued with local governments and other regional organizations that can help with long term management of Metro’s properties. Linda noted that this review is a little outside of the committee’s charge, but looks to the future of how properties are managed. The committee may hear a report in February.
- Relationship of program to The Intertwine – The committee recommended in their 2008 annual report that Metro “think big” in considering how best to leverage the program with other regional efforts. The committee will review The Intertwine’s efforts to see how they complement the program’s goals. A staff report is planned for February.
- Communication plan – Increased and more transparent communication has been recommended by the Metro Auditor, external auditors, the Blue Ribbon Committee and the Metro Council. The committee may consider to what extent bond measure money should be spent communicating Metro’s activities related to the program. A report is scheduled for December.

Discussion followed about whether the work plan is too ambitious. The committee decided that they will select their report topics from this list as time permits.

Next meeting

A survey was distributed with potential dates and times for the December 2010 meeting. Linda Craig will send a meeting notice after polling absent members and tabulating the results. ***NOTE: The meeting has been scheduled for 9 a.m. to noon on Friday, Dec. 10.***

Adjournment

The meeting adjourned at noon.

Minutes recorded by Marybeth Haliski.

2006 Natural Areas Bond Fund

Summary of Resources, Requirements and Changes in Fund Balance
(Unaudited)

	<u>FY07</u>	<u>FY08</u>	<u>FY09</u>	<u>FY10</u>	<u>FY11</u> <u>To 8/31/2010</u>	<u>Program</u> <u>Total</u>
	<u>Amount</u>	<u>Amount</u>	<u>Amount</u>	<u>Amount</u>	<u>FTE</u> <u>Amount</u>	<u>Amount</u>
Beginning Fund Balance	0	122,299,840	93,979,814	77,117,027	56,800,428	0
Resources						
Bond Proceeds	130,678,369	0	0	0	0	130,678,369
Interest Earnings	1,301,230	5,600,503	2,538,906	940,859	(140,983)	10,240,515
Other Resources	10,000	27,380	5,322,056	385,730	6,670	5,751,836
Subtotal Resources	131,989,599	5,627,883	7,860,962	1,326,589	(134,313)	146,670,720
Requirements						
Land Acquisition						
Staff Costs	117,956	206,692	425,072	465,329	6.3 86,229	1,301,278
Materials & Services	6,786	2,599	334,980	328,153	165	672,683
Land Costs	7,596,372	25,224,753	14,517,160	10,274,472	1,063,290	58,676,047
Due Diligence						
Staff Costs	0	412,029	492,589	455,774	5.0 70,728	1,431,119
Materials & Services	96,539	199,756	183,474	299,244	29,705	808,719
Stabilization						
Staff Costs	19,578	116,534	190,606	290,234	4.7 64,005	680,957
Materials & Services	294	177,441	345,330	284,874	73,918	881,858
Local Share						
Staff Costs	0	36,269	43,872	47,458	0.5 8,134	135,733
Materials & Services	0	25	188	3,500	4,250	7,962
Payments to Jurisdictions	400,000	4,798,366	4,316,165	5,399,109	867,802	15,781,442
Capital Grants						
Staff Costs	0	63,831	89,352	125,466	0.8 14,699	293,349
Materials & Services	0	1,400	1,363	811	0	3,573
Grant Payments	0	0	49,750	534,899	131,100	715,749
Capital Construction						
Staff Costs	0	84,071	113,921	115,064	0.9 16,956	330,012
Capital	455,072	1,513,347	2,503,147	1,841,075	190,667	6,503,308
Administration						
Bond Issuance Costs	295,889	0	0	0	0	295,889
Refinement						
Staff Costs	1,477	5,426	0	0	0	6,903
Materials & Services	382,030	85,882	0	0	0	467,912
Direct Admin Costs						
Staff Costs	230,815	527,644	490,722	750,704	3.7 109,875	2,109,759
Materials & Services	25,980	152,422	51,490	56,082	2,460	288,434
Indirect Admin Costs*	60,971	339,422	574,569	370,939	95,872	1,441,773
Other Requirements	0	0	0	0		0
Subtotal Requirements	9,689,759	33,947,909	24,723,748	21,643,188	2,829,855	92,834,460
Ending Fund Balance	122,299,840	93,979,814	77,117,027	56,800,428	### 53,836,259	53,836,259

	<u>FY07</u>	<u>FY08</u>	<u>FY09</u>	<u>FY10</u>	<u>FY11 YTD</u>	<u>Total</u>
Administration as % of Total Expenditures	10.29%	3.27%	4.52%	5.44%	7.36%	4.97%

* Indirect Administrative Expenses are those charged through internal allocation, and include services such as Human Resources, risk management, payroll, building rents, etc.

Note: Due Diligence staff costs have been removed from "Indirect Admin Costs" and the FTE for these positions is shown as a direct expense.

DRAFT

Natural Areas Program Performance Oversight Committee Work Plan October 2010 - June 2011

October 2010	Progress by target area Overview of natural area program priorities for the year Finalize Oversight Committee Work Plan
Early December 2010	Program updates Communication plan Staffing and program overhead Bond sale sequence and cash management Stabilization overview
February 2011	Program updates Performance measures/database report Intertwine update Partners and future management
Late April 2011	Program updates Subcommittee reports <ul style="list-style-type: none">• Use of unusual circumstances clause• Updates from other subcommittees
June 2011	Program updates Wrap-up subcommittee work Outline annual committee report

Topics for Committee work suggested by Metro Council:

- Staffing and program overhead
- Progress by target area
- Use of the unusual circumstances clause
- Bond sale sequence and cash management

Other topics to be considered:

- Stabilization funds
- Partners and future management
- Relationship of bond measure program to Intertwine.
- Data base
- Communication plan

NOTE: Subcommittees may be needed for some of these topics; others can be considered by the full committee.



Target area progress report

Presented to the Natural Areas Program Performance Oversight Committee


October 12, 2010



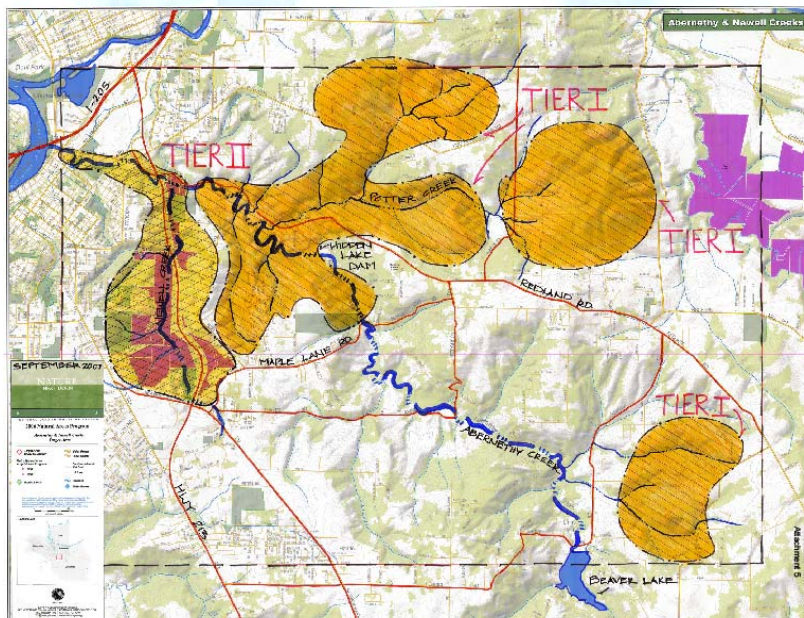
What is a refinement plan?

The compilation of available information about each target area:

- Biologist field visits and expert analysis of maps
- Interviews with key stakeholders
- Eight public open houses throughout the region
- A “virtual” open house available via the internet



Abernethy and Newell Creeks



Abernethy and Newell Creeks

Refinement Plan goals

Protect undeveloped lands along lower Newell Creek for future restoration (especially threatened habitat for native steelhead and cutthroat populations) and wildlife connectivity.

Protect natural corridors and uplands along the main stem of Abernethy Creek and its major tributaries to protect water quality and wildlife habitat.

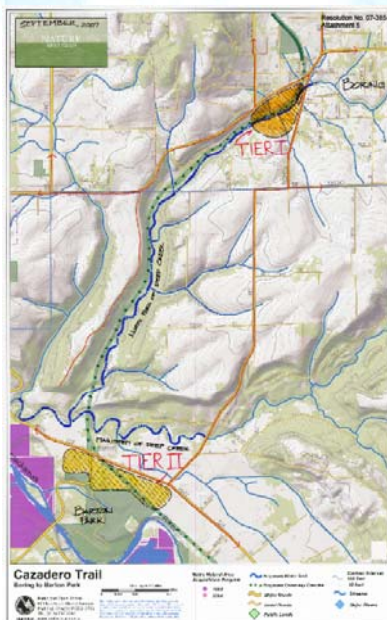
Acquisitions to date

Aug. 2007	Evanson/TPL	106.7 acres
-----------	-------------	-------------

Refinement Plan goal: 150 acres



Cazadero Trail



Cazadero Trail

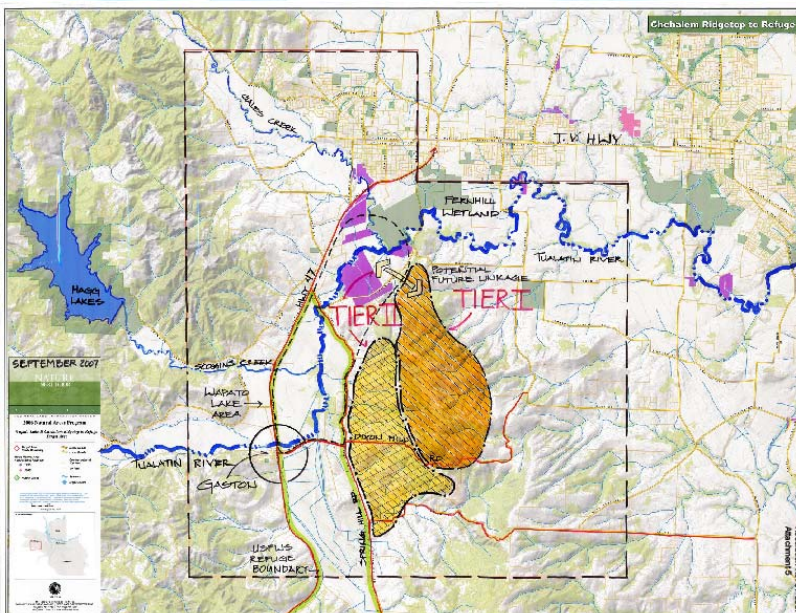
Refinement Plan goals

Acquire lands necessary to complete the Cazadero Trail between Boring and Barton Park.

Acquisitions to date

May 2010	OSU Foundation	24.63 acres
----------	----------------	-------------

Chehalem Ridgetop to Refuge



Chehalem Ridgetop to Refuge

Refinement Plan goals

Protect large, undeveloped tracts of forestland to protect water quality, wildlife habitat and connections, and to provide public access opportunities.

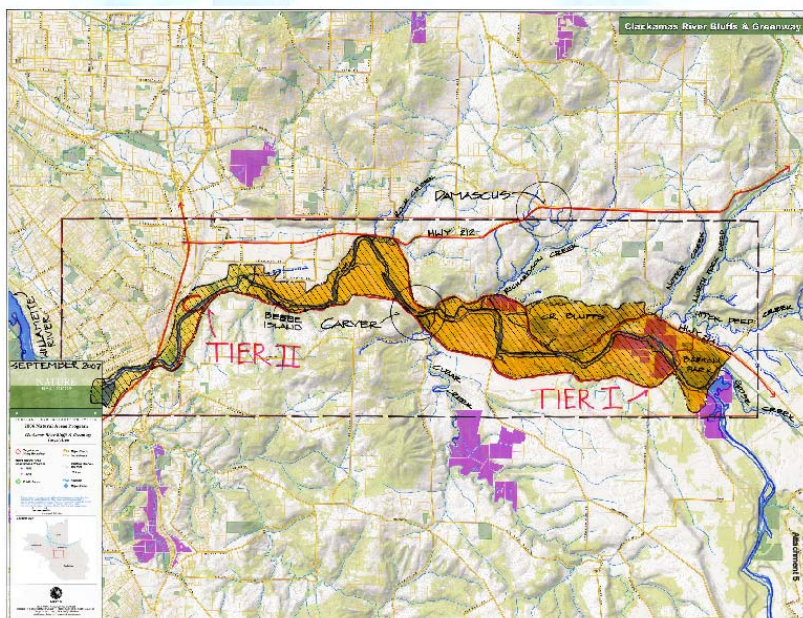
Acquisitions to date

Dec. 2007	Berry (Hamacher/Ponzi)	4.2 acres
Feb. 2008	Berry (Hamacher/Ponzi)	36.3 acres
Jan. 2010	TPL/Chehalem Ridge Natural Area	1143 acres

Refinement Plan goal: 400 acres



Clackamas River Bluffs and Greenway



Clackamas River Bluffs and Greenway

Refinement Plan goals

Protect sensitive riparian areas, wetlands and side channels along the Clackamas River from Goose Creek west towards the confluence with the Willamette River for fish and wildlife habitat protection, enhancement and restoration. Protect water quality and improve fish and wildlife habitat in the lower Clackamas River by acquiring and restoring native plant communities and side channels.

Protect unique geological features, habitat for rare species and lands that could provide a regionally significant nature park on the mostly undeveloped Clackamas River Bluffs.

Clackamas River Bluffs and Greenway

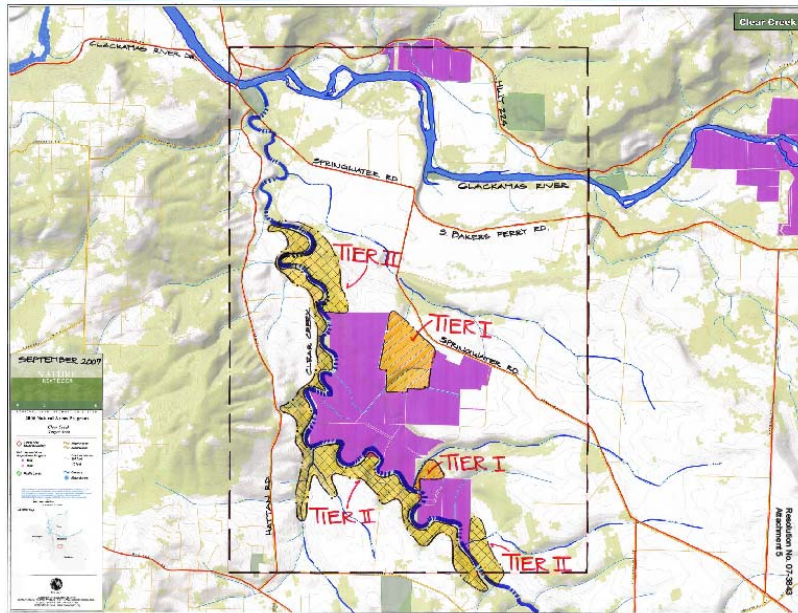
Acquisitions to date

Feb. 2008	Anderson	.7
Feb. 2008	Thompson	.3
May 2008	ODOT/Carver Curves	16.2
Oct. 2009	Pratt	88.3

Refinement Plan goal: 450 acres



Clear Creek



Clear Creek

Refinement Plan goals

Protect the water quality and fish and wildlife habitat of Clear Creek and Clear Creek Canyon.

Protect the public investment made to date in establishing a significant, publicly accessible regional natural area.

Acquisitions to date

None.

Refinement Plan goal: 60 acres



Columbia Slough



Columbia Slough

Refinement Plan goals

Protect and enhance habitat and linkages along the Columbia Slough.

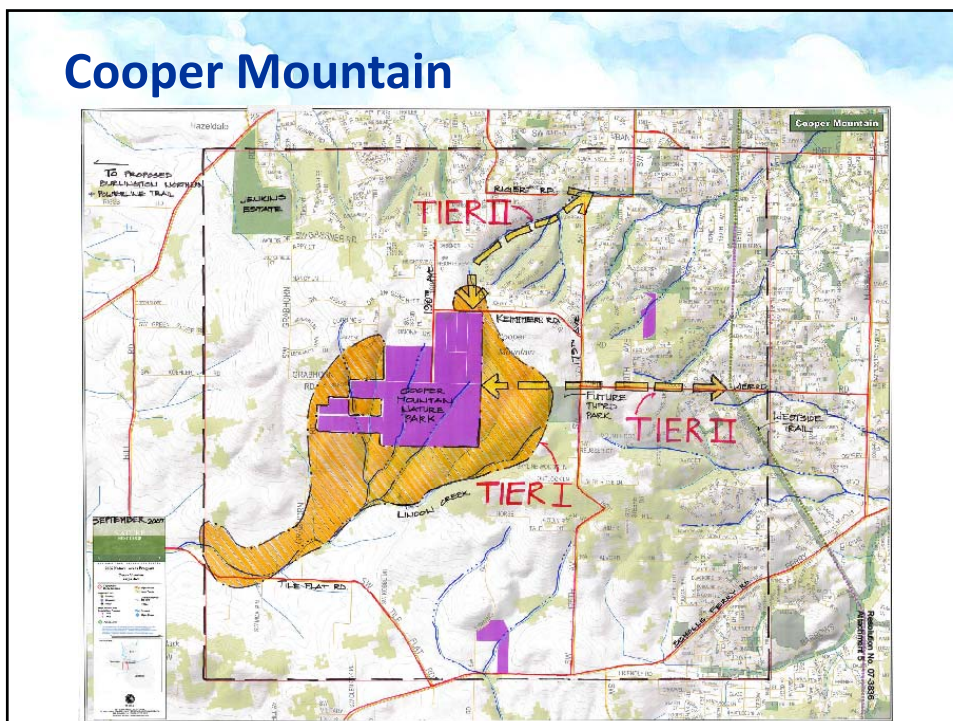
Acquisitions to date

Oct. 2007	Multnomah County tax transfer	2.0 acres
Dec. 2007	Oregon Parks donation	xx acres
June 2010	City of Portland easement	1.0 acre
July 2010	Dominguez	.3 acres
July 2010	Duck's Moorage	.2 acres
July 2010	Zakharyuk	.2 acres
July 2010	Archaeological Conservancy	.1 acres

Refinement Plan goal: 50 acres



Cooper Mountain



Cooper Mountain

Refinement Plan goals

Acquire key land parcels in the Cooper Mountain target area to build on Metro's successful efforts using 1995 bond funds to:

- Expand habitat protection of Oregon white oak and rare prairie habitat and riparian corridors along Lindow and McKerns Creeks.
- Enhance access to Cooper Mountain Nature Park by land acquisition and securing trail connections between publicly-owned properties.
- Keep important wildlife corridors and buffers intact.

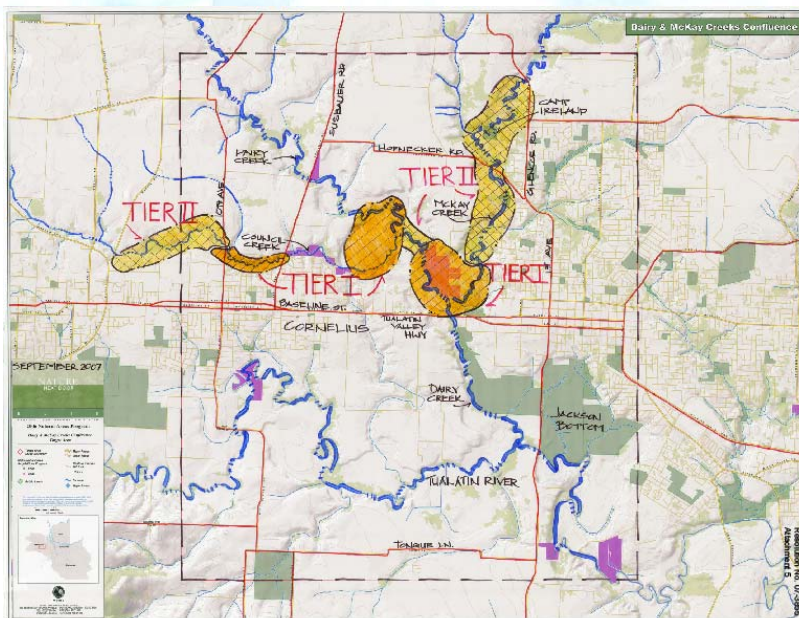
Acquisitions to date

None.

Refinement Plan goal: 204 acres



Dairy and McKay Creeks Confluence



Dairy and McKay Creeks Confluence

Refinement Plan goals

Protect the riparian areas and associated wetlands in the Dairy and McKay Creeks confluence area to contribute significantly to improved water quality in these major tributaries of the Tualatin River.

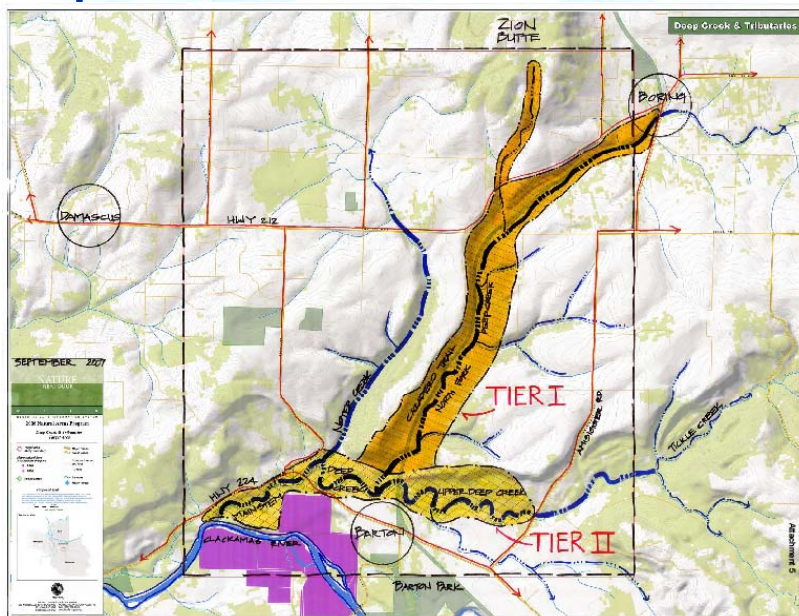
Acquisitions to date

Apr. 2007	Wetter Trust	93.3 acres
Jan. 2009	Saxton	6.7 acres

Refinement Plan goal: 140 acres



Deep Creek and Tributaries



Deep Creek and Tributaries

Refinement Plan goals

Preserve and protect the canyons and streams of Deep Creek that provide vital natural areas and green space for water quality, fish and wildlife habitat.

Protect the North Fork of Deep Creek to connect the Clackamas River to the Zion-Tower-Sunshine-Butler Ridge system of linked wildlife habitat.

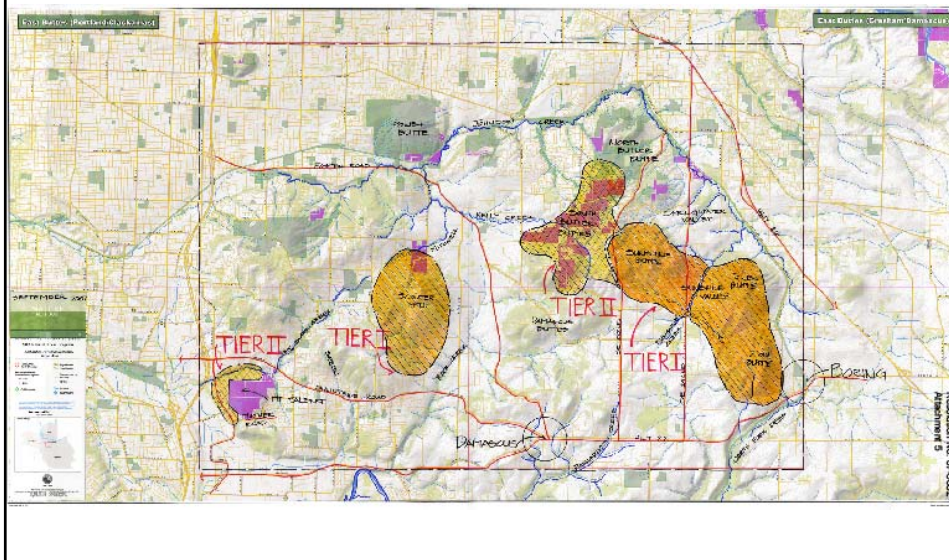
Acquisitions to date

Oct. 2009	Mabel Johnson Trust	17.9 acres
-----------	---------------------	------------

Refinement Plan goal: 200 acres



East Buttes



East Buttes

Refinement Plan goals

Connect the substantial Butler Ridge natural area in public ownership to create a wildlife corridor and potential access to the Clackamas River via Sunshine Butte, Tower Butte, Zion Butte and the North Fork Deep Creek.

Protect butte tops and slopes for wildlife habitat and corridors between these wooded slopes and create scenic vistas that provide visual relief to urban residents.

Protect headwaters of healthy streams through acquisition of wooded hillsides on Scouter Mountain and Mount Talbert.

East Buttes

Acquisitions to date

June 2007	Darby Ridge	37.3 acres
July 2007	Persimmon	78.0 acres
June 2008	Miller	21.0 acres
Oct. 2008	McMoriara Inc.	15.0 acres
June 2010	Sunnyside Brook	22.5 acres

Refinement Plan goal: 52 acres



Fanno Creek Linkages



Fanno Creek Linkages

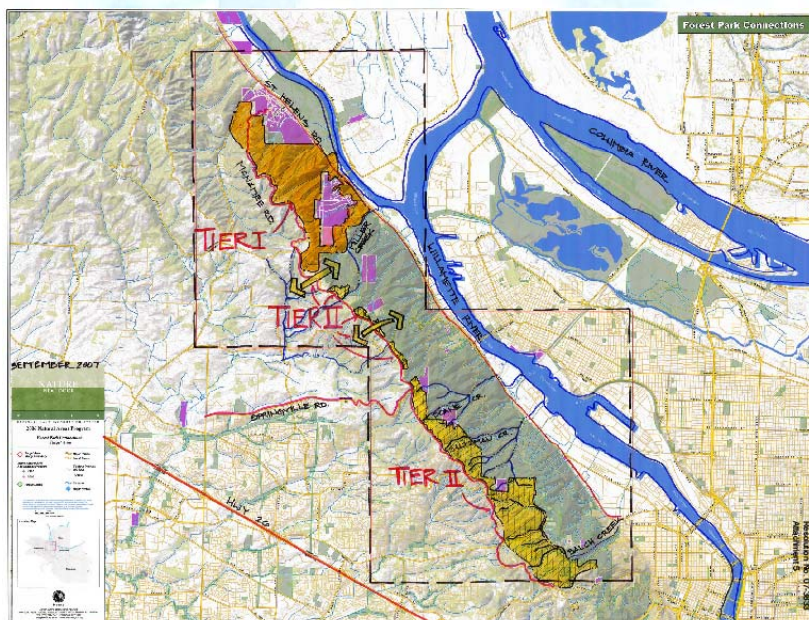
Refinement Plan goals

Complete a continuous greenway trail from the Tualatin River into a highly urbanized, “walker challenged” area of Portland, and further protect water quality along Fanno Creek and its tributaries.

Acquisitions to date

Apr. 2010	Tigard Industrial	2.2 acres
Apr. 2010	Elliot	1.0 acres

Forest Park Connections



Forest Park Connections

Refinement Plan goals

Acquire key properties to connect Forest Park to other public lands.

Connect Forest Park to Rock Creek and the Westside Trail to keep important wildlife corridors intact and provide trail connections between the region's largest urban park and Washington County.

Protect important headwater areas on east side of the ridgeline.

Acquisitions to date

Mar. 2007	Margolis	57.5 acres
Sep. 2008	Multnomah County foreclosure	2.8 acres
Nov. 2008	Oregon Parks Foundation/Audubon	86.5 acres

Refinement Plan goal: 60 acres



Gresham-Fairview Trail



Gresham-Fairview Trail

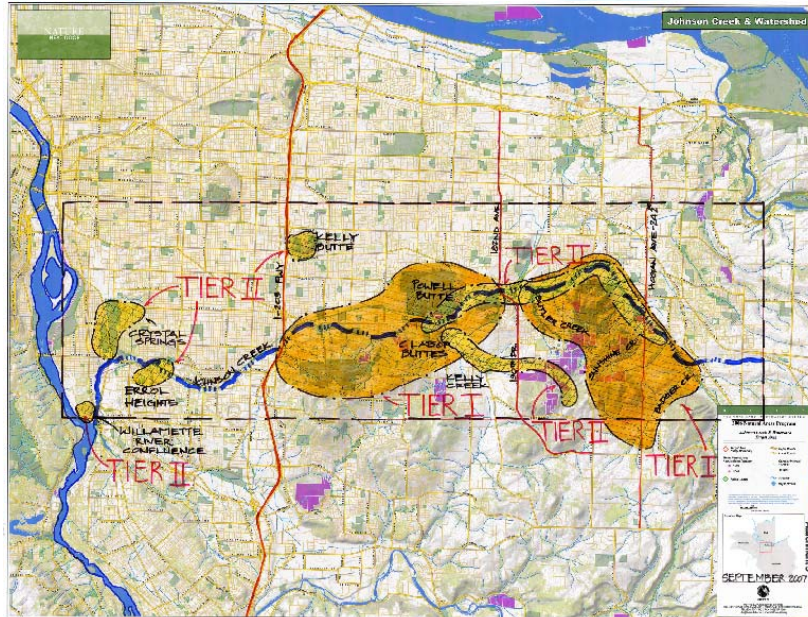
Refinement Plan goals

Complete this important eastern spine of the regional trail system by securing a complete public corridor along the proposed Gresham-Fairview Trail while also looking to provide access and connectivity to and from adjacent parks, greenspaces, trails and a potential regional trailhead.

Acquisitions to date

None.

Johnson Creek and Watershed



Johnson Creek and Watershed

Refinement Plan goals

Pursue opportunities to acquire tracts within the remaining upland habitat areas adjacent to the main stem, along major tributary creeks, and within the Johnson Creek floodplain to protect water quality and connect existing public holdings.

Refinement Plan goal: 200 acres



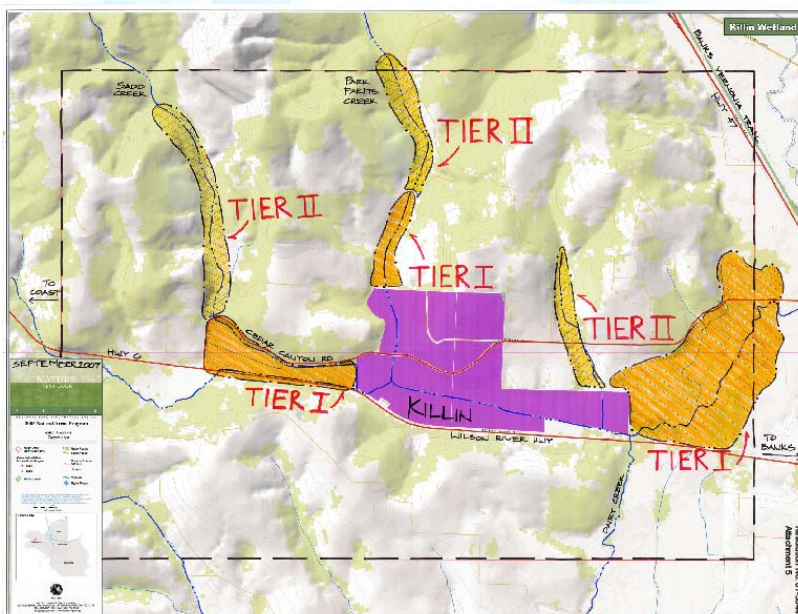
Johnson Creek and Watershed

Acquisitions to date

Dec. 2006	Spani/Seely	1.0 acres
June 2007	Wong/Gilberts Ridge	10.0 acres
July 2007	Clatsop Buttes/Jersey	49.0 acres
July 2007	Allesina	1.3 acres
Nov. 2007	Telford	20.0 acres
Nov. 2007	Reeves	52.7 acres
Jan. 2008	Clatsop Buttes 2/Hedges	1.5 acres
May 2008	Emmert/Clatsop	11.3 acres
July 2008	Stickney	2.0 acres
Oct. 2008	Jones/Ambleside	.5 acres
Dec. 2008	Gonzales	.4 acres
Aug. 2009	Emmert/Lents	10.0 acres
Feb. 2010	Parson	5.6 acres



Killin Wetlands



Killin Wetlands

Refinement Plan goals

Although much of the Killin Wetlands is currently in public ownership, acquisition of the critical remaining portions of the wetlands and main tributaries will build on the public's investment to date and ensure long-term protection and public enjoyment of the highly valuable fish and wildlife habitat in one of the largest remaining peat soil wetlands in the Willamette Valley.

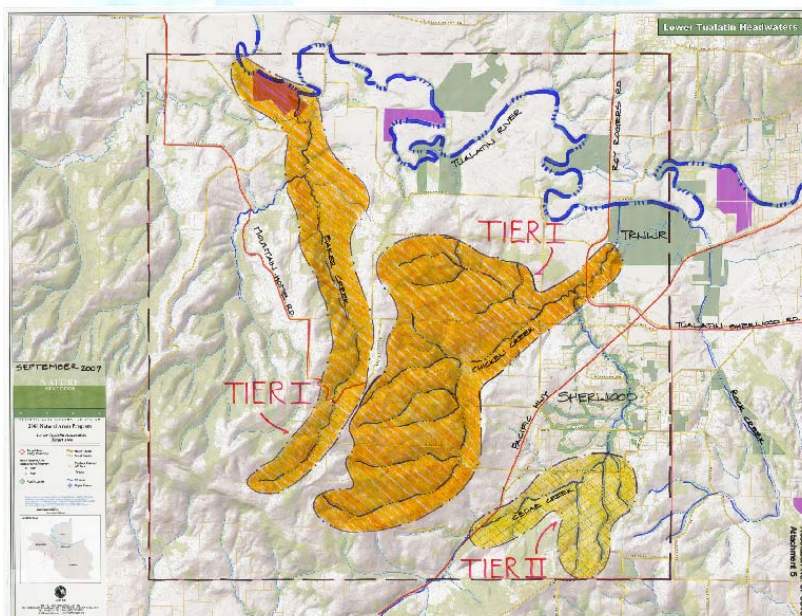
Acquisitions to date

Dec. 2008	Williams	3.6 acres
-----------	----------	-----------

Refinement Plan goal: 60 acres



Lower Tualatin Headwaters



Lower Tualatin Headwaters

Refinement Plan goals

Protect lands within the Baker, Chicken and Cedar creek watersheds in the southwest Chehalem Mountains that retain significant wildlife habitat and contribute to water quality in the Tualatin River Basin.

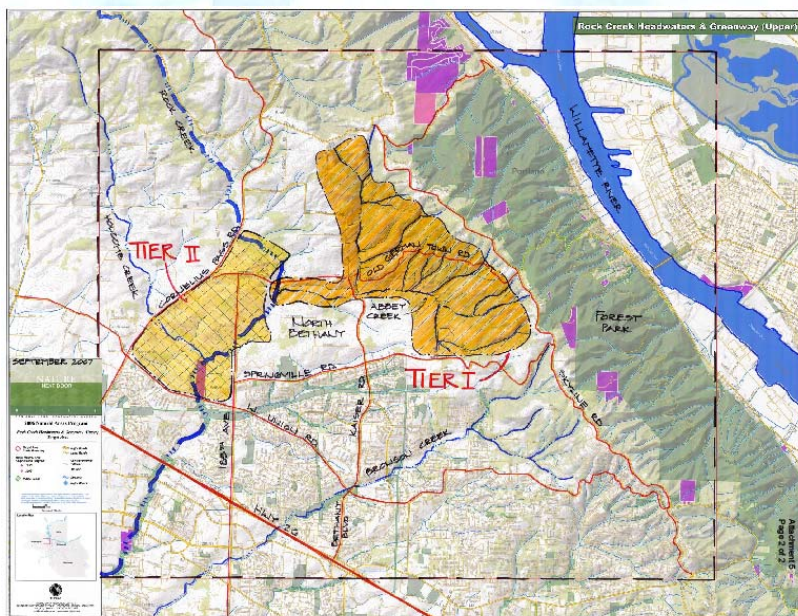
Acquisitions to date

Apr. 2007	Brown	44.2 acres
May 2007	Burge Trust	52.9 acres
Oct. 2008	Holmes	38.6 acres
June 2009	Cole	5.0 acres
June 2009	Streeter	23.2 acres
Aug. 2010	Ralston	34.0 acres

Refinement Plan goal: 400 acres



Rock Creek Headwaters and Greenway



Rock Creek Headwaters and Greenway

Refinement Plan goals

Protect the upper watershed to meet water quality protection goals in the lower watershed.

Protect key undeveloped sites in the lower reaches of Rock Creek to buffer growth, protect water quality and provide nature in neighborhoods.

Protect habitat along key tributaries and associated wetlands.

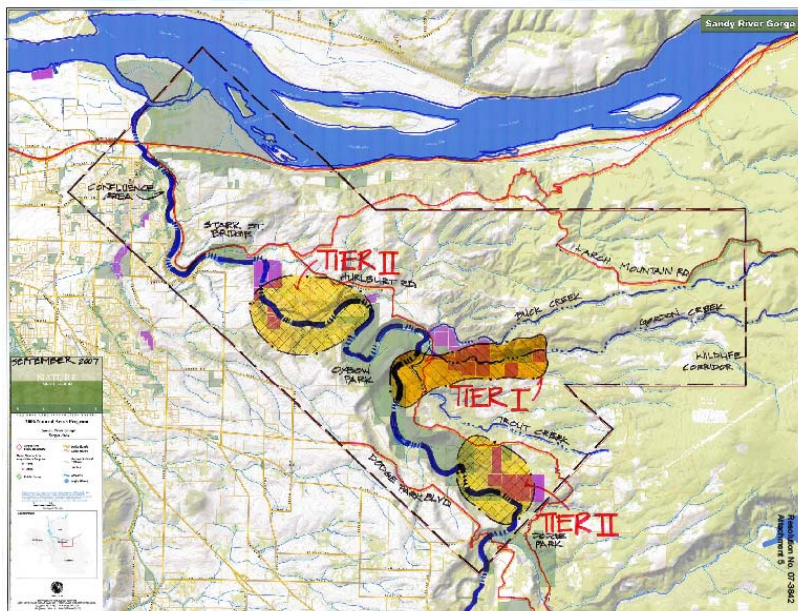
Acquisitions to date

Sep. 2009	Chang	20.0 acres
Apr. 2010	Keystone Construction	20.6 acres
June 2010	Cho	40.0 acres

Refinement Plan goal: 190 acres



Sandy River Gorge



Sandy River Gorge

Refinement Plan goals

Protect biological linkages by acquiring essential properties along the Sandy River and its tributaries for the protection of fish and wildlife habitat and water quality benefits.

Pursue partnerships throughout the target area to achieve objectives and maximize the leveraging of regional bond funds.

Acquisitions to date

Dec. 2009	Friberg	41.8 acres
-----------	---------	------------

Refinement Plan goal: 20 acres



Springwater Corridor



Springwater Corridor

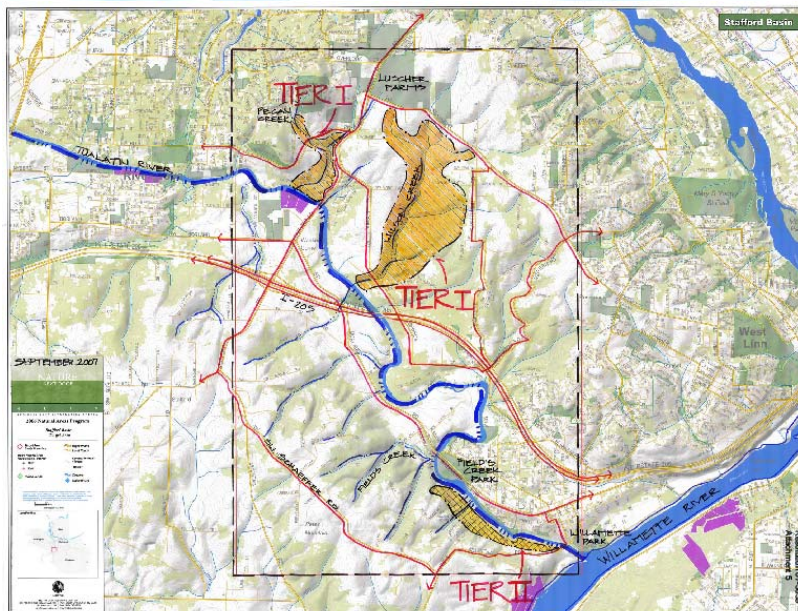
Refinement Plan goals

Complete the 1-mile corridor between the existing Springwater on the Willamette Trail and the Three Bridges project at SE 19th Avenue in Portland. This will provide the final connection of the Springwater Corridor between downtown Portland east through Milwaukie and Gresham to Boring.

Acquisitions to date

Sep. 2010	Oregon Pacific Railroad	.75 acres
-----------	-------------------------	-----------

Stafford Basin



Stafford Basin

Refinement Plan goals

Protect lands in the Stafford basin along tributary creeks to the Tualatin River to enhance water quality protection, provide floodplain storage, secure diverse natural areas for local residents and provide regional trail connections.

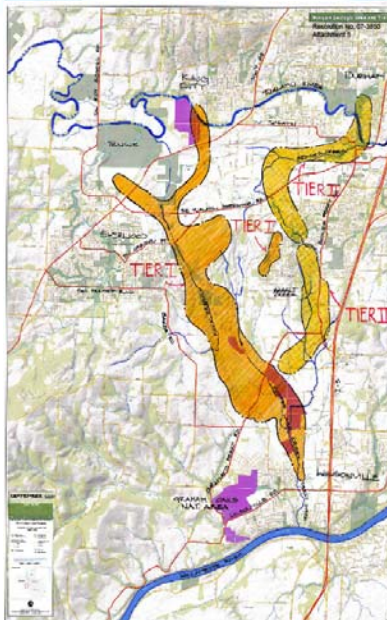
Acquisitions to date

June 2008	Stevens	24.7 acres
June 2009	Landover Properties	63.9 acres

Refinement Plan goal: 200 acres



Tonquin Geologic Area



Tonquin Geologic Area

Refinement Plan goals

Protect unique geologic features that provide valuable wildlife habitat. Acquire additional lands needed for a future regional trail corridor connecting Wilsonville to Tualatin.

Acquisitions to date

July 2008	State of Oregon/Dammasch	19.7 acres
-----------	--------------------------	------------

Refinement Plan goal: 213 acres



Tryon Creek Linkages



Tryon Creek Linkages

Refinement Plan goals

Acquire few key land parcels to complete the connection between existing public lands and Tryon Creek State Natural Area.

Protect connections to adjacent watersheds to maintain important wildlife corridors.

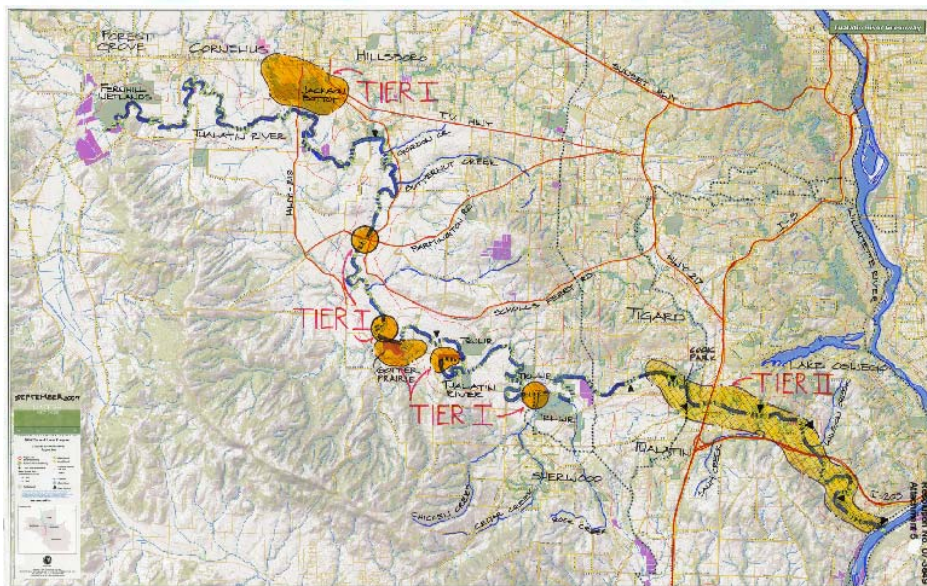
Acquisitions to date

None.

Refinement Plan goal: 7 acres



Tualatin River Greenway



Tualatin River Greenway

Refinement Plan goals

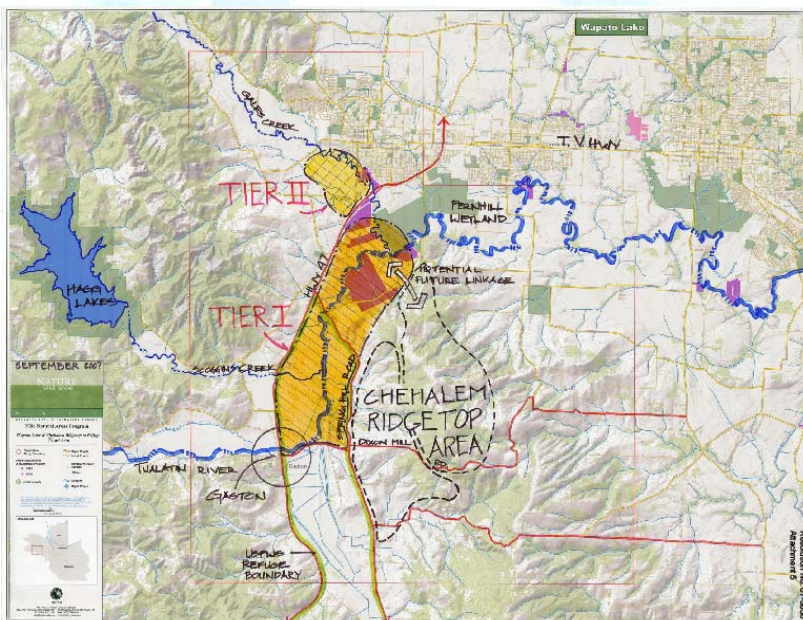
Protect and restore riparian areas and floodplains to improve water quality and to support a diversity of plants and wildlife.

Provide additional or enhanced access that will allow people to enjoy the river.

Acquisitions to date

Sep. 2007	Kapuan	.4 acres
Oct. 2008	Icon Construction	1.5 acres

Wapato Lake



Wapato Lake

Refinement Plan goals

Protect lands in the Wapato Lake area for water quality and wildlife habitat benefits.

Acquisitions to date

None.

Refinement Plan goal: 400 acres



Westside Trail



Westside Trail

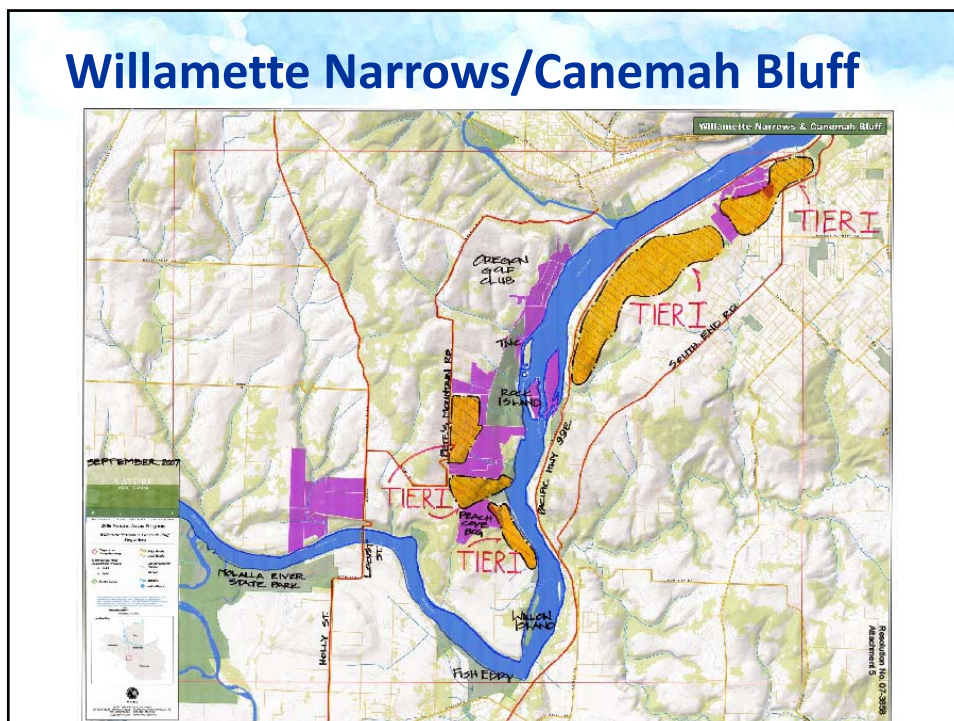
Refinement Plan goals

Develop a continuous trail corridor from the Tualatin River north to and east through Forest Park to connect to the Willamette River Greenway and 40-Mile Loop Trail.

Acquisitions to date

None.

Willamette Narrows/Canemah Bluff



Willamette Narrows/Canemah Bluff

Refinement Plan goals

Acquisition of strategic additions in the Willamette Narrows and Canemah Bluff target area will protect the unique biological, geological and scenic values of this area and allow for a publicly accessible regional natural area to be established.

Acquisitions to date

Mar. 2009	Davis	24.3 acres
Mar. 2009	Kahre	13.3 acres

Refinement Plan goal: 90 acres



Willamette River Greenway



Willamette River Greenway

Refinement Plan goals

Protect fish and wildlife habitat, water quality, scenic resources and improve public access to the river along the greenway from Wilsonville to the Multnomah Channel.

Acquisitions to date

Aug. 2010

6710 LLC

6.3 acres