

BEFORE THE CHIEF OPERATING OFFICER

RELATING TO A REVISION TO THE EMPLOYMENT)
AND INDUSTRIAL AREAS MAP OF TITLE 4 OF THE) Order No. 07-042
URBAN GROWTH MANAGEMENT FUNCTIONAL)
PLAN (INDUSTRIAL AND OTHER EMPLOYMENT)
AREAS) TO CONFORM THE MAP TO A)
COMPREHENSIVE PLAN AMENDMENT BY THE)
CITY OF FOREST GROVE)
)

WHEREAS, the City of Forest Grove amended its comprehensive plan by Ordinance No. 2007-06 and its land use regulations by Ordinance No. 2007-07, both on May 14, 2007, to change the plan and zone map designations on 3.85 acres from General Industrial to General Commercial pursuant to Metro Code section 3.07.450C; and

WHEREAS, the subject property is designated Industrial Area on the Employment and Industrial Areas Map of Title 4 (Industrial and Other Employment Areas) of Metro's Urban Growth Management Functional Plan; and

WHEREAS, subsection 3.07.450C authorizes local governments to amend their comprehensive plans to allow uses that are not allowed by Title 4 under the circumstances set forth in the subsection; and

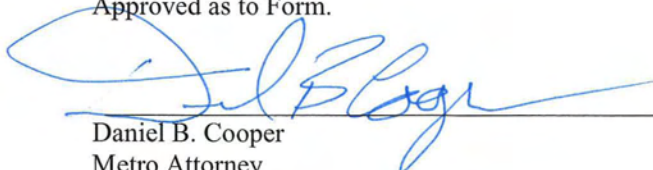
WHEREAS, subsection 3.07.450E requires the Chief Operating Officer to conform the Industrial Area on the Employment and Industrial Areas Map to the amendment by a local government within 30 days following notification from the local government that no appeal pursuant to ORS 197.825 was filed within 21 days following the amendment; now, therefore,

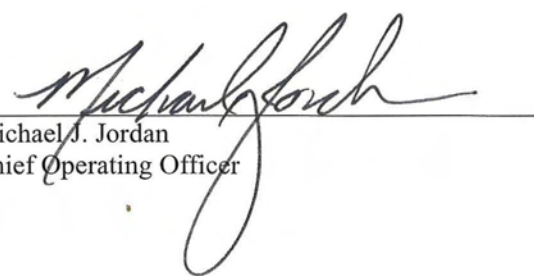
IT IS ORDERED THAT:

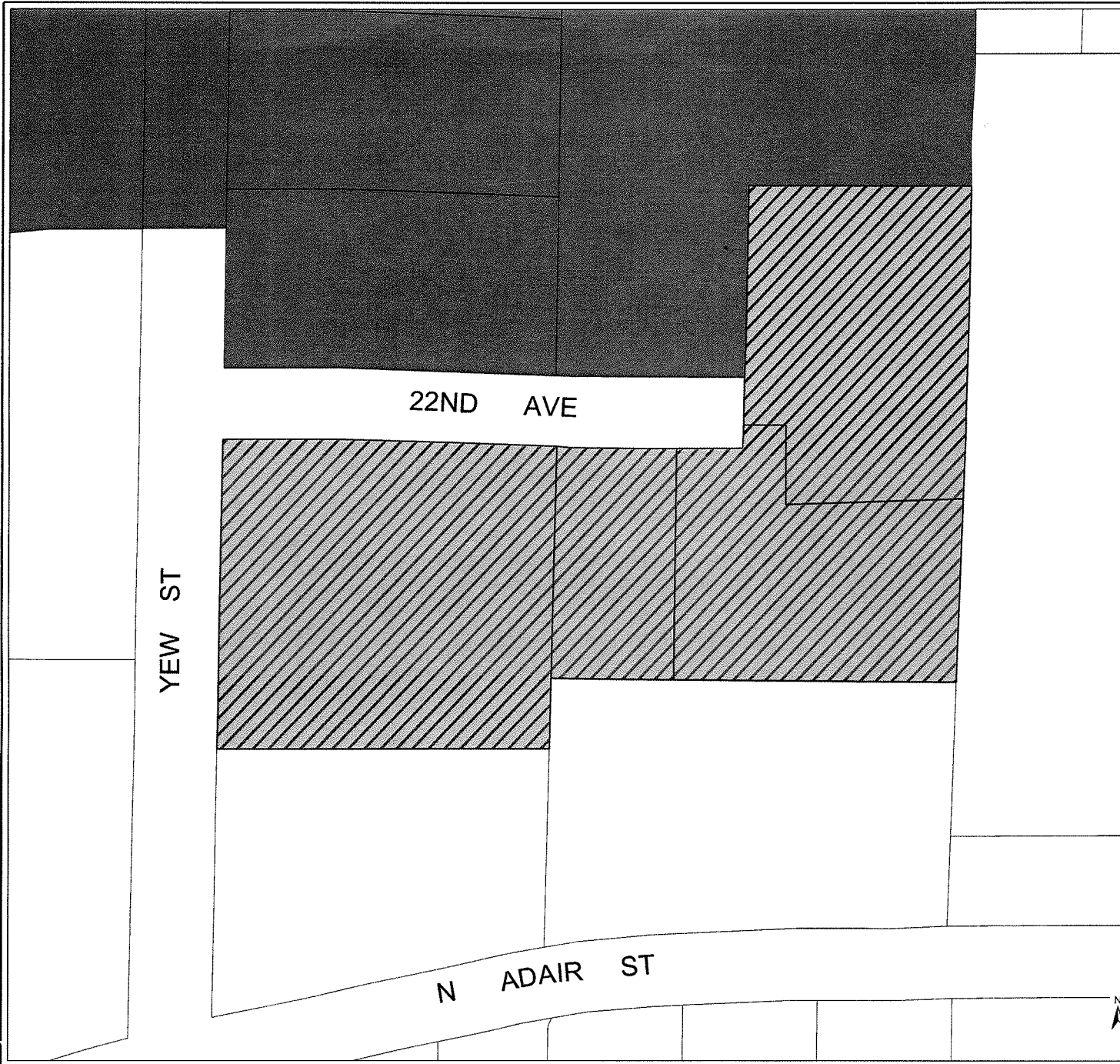
The Employment and Industrial Areas Map of Title 4 of Metro's Urban Growth Management Functional Plan is hereby revised for 3.85 acres as shown on Exhibit "A", attached to this order and incorporated herein.

ENTERED this 21st day of June, 2007.

Approved as to Form.


Daniel B. Cooper
Metro Attorney


Michael J. Jordan
Chief Operating Officer





City of Forest Grove

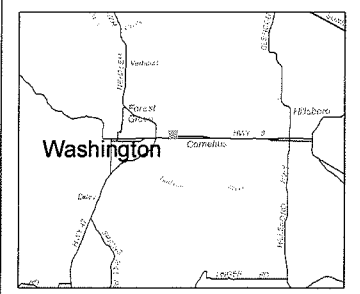
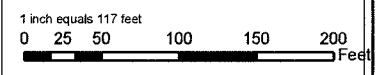
Title 4 Change

Exhibit A of Metro Order No. 07-042

 Area Changed from Industrial to Employment

Title 4
 Employment Land
 Industrial Land

The information on this map was derived from digital databases on Metro's GIS. Care was taken in the creation of this map. Metro cannot accept any responsibility for errors, omissions, or positional accuracy. There are no warranties, expressed or implied, including the warranty of merchantability or fitness for a particular purpose, accompanying this product. However, notification of any errors will be appreciated.



Location Map


METRO
 METRO DATA RESOURCE CENTER
 600 NORTHEAST GRAND AVENUE | PORTLAND, OREGON 97232-2736
 TEL (503) 797-1742 | FAX (503) 797-1909
 dro@metro.dst.or.us | www.metro-region.org