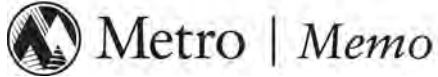


Metro | Agenda

Meeting: East Metro Connections Plan Steering Committee meeting
Date: Wednesday, July 27, 2011
Time: 1 to 3 p.m.
Place: Gresham City Hall, Barlow and Oregon Trail rooms
1333 NW Eastman Parkway, Gresham
Purpose: **Establish working problem statement based on existing and future needs, opportunities and constraints**
Outcomes: 1. Shared understanding of current and preliminary future conditions
2. Discussion among steering committee members
3. Refinement and confirmation of working problem statement

- 1:00 **Meeting called to order**
- *Meeting purpose, outcomes and format*
- 1:03 **Welcome and opening remarks by Metro Council President Tom Hughes and Chair Shirley Craddick**
- *Protocols and goals confirmed at last meeting*
- 1:10 **Timeline and milestones**
- *Overall process, public involvement and steering committee milestones*
 - *Preliminary problem statement and objectives*
- 1:20 **Analysis, opportunities and constraints**
- *Transportation results (15 mins)*
 - *Discussion (30 mins)*
 - *How does this jibe with your experience?*
 - *What other information would you like?*
 - *Thoughts on the working problem statement?*
 - *Other results (10 mins)*
 - *Discussion (20 mins)*
 - *How does this reflect your local aspirations?*
 - *What other information would you like?*
 - *Thoughts on the working problem statement?*
- 2:35 **Problem statement and objectives**
- *Overall problem statement*
 - *How objectives will be used*
 - *Discussion*
- 2:50 **Next steps**
- *Next steering committee meeting mid September to mid October*
 - *All - Clarifying questions*
- 2:55 **Public comment**
- 3:00 **Adjourn**



Date: Thursday, July 21, 2011
To: Members of the East Metro Connections Plan Steering Committee
From: Chair and Metro Councilor Shirley Craddick
Subject: In preparation for our July 27 meeting

Greetings fellow committee members,

Our next meeting is fast approaching and I want to be sure we are prepared to have a successful experience. On Wednesday, July 27, we will get the chance to discuss what the technical analysis has begun to uncover. We've created an agenda that keeps staff presentation brief and gives us time to talk to each other. **Our charge for this meeting is to confirm a working problem statement.** This is a critical step because the way we define the problem shapes the solutions we will eventually consider.

The attached materials contain a preliminary working problem statement **developed and reviewed by the partners' technical staff.** We will use this as a jumping off point to start our discussion. The rest of the packet summarizes information used to draw those conclusions. We know some of you are more interested in technical details, some less. Please at minimum **read the working problem statement and narrative (page 2 of the working problem statement packet) before our meeting.** Our success is dependent on us coming to the meeting prepared.

I've spoken with all of you one-on-one and I've heard questions about the **focus of the effort.** We have the opportunity to emerge from this process with real transportation solutions. Next week's meeting should give us a clear picture of the transportation needs and challenges we are facing. You'll also see there are real, related issues that affect or are affected by the transportation choices we make. You've said it's important for us to focus on substance and base our decisions on both qualitative and quantitative information. I've also heard questions about our **committee's process and milestones.** We've created time to address this at the beginning of the meeting.

I look forward to our discussion. I know it will be interesting.

cc: East Metro Connections Plan Technical Advisory Committee
City and county managers/administrators

EAST METRO CONNECTIONS PLAN - **Steering committee decision timeline**

Spring 2011	Goals	<ul style="list-style-type: none"> ▪ Honors the 2007 MOU ▪ Reflects new mobility corridor approach - community investment strategy ▪ Developed by technical staff and elected officials, as well as affected interests ▪ Confirmed by the steering committee (April 27 meeting) ▪ Public outreach includes web updates, fact sheet, newsfeeds and community events
Summer 2011	Problem statement and objectives	<ul style="list-style-type: none"> ▪ Reflects existing and anticipated future conditions related to transportation, economic and community development and natural resources ▪ Identifies existing and future needs, opportunities and constraints ▪ Refined and confirmed by the steering committee (July 27 meeting) ▪ Presentations to full city councils ▪ Public outreach includes web updates, web survey, local newsletters, videos, newsfeeds, community events and panels of experts related to school operations, economic and community development, equity, freight and natural resources
Fall 2011	Initial strategies	<ul style="list-style-type: none"> ▪ Ties anticipated future conditions and potential solutions to local aspirations ▪ Illuminates the tradeoffs between different courses of action ▪ Reflects public and expert input ▪ Refined by the steering committee (mid-September to mid-October meeting) ▪ Public outreach includes public workshop, web updates, local newsletters, videos, newsfeeds and community events
	Preferred strategies	<ul style="list-style-type: none"> ▪ Narrows solutions based on future conditions, local aspirations and the tradeoffs between different courses of action ▪ Ties solutions to a timeline ▪ Reflects input from local elected councils ▪ Refined and confirmed by the steering committee (mid-November meeting) ▪ Public outreach includes web updates, videos, newsfeeds and community events
Winter 2012	Initial implementation plan	<ul style="list-style-type: none"> ▪ Identifies phased investments in the plan area ▪ Reflects input from local elected councils ▪ Refined by the steering committee (January or February meeting) ▪ Public outreach includes public workshop (tentative), web updates, local newsletters, videos, newsfeeds and community events
Spring 2012	Final implementation plan	<ul style="list-style-type: none"> ▪ Confirms phased investments in the plan area and identifies local implementation actions ▪ Confirmed by the steering committee (April or May meeting) ▪ Jurisdiction-specific components confirmed by local elected councils ▪ Public outreach includes web updates, local newsletters, videos, newsfeeds and community events

Public involvement progress report

July 27, 2011

Public involvement goals

- Communicate complete, accurate, understandable and timely information to the public
- Gather input from the community by providing meaningful opportunities to participate
- Provide adequate public notice of opportunities to participate
- Solicit the needs of traditionally under-served populations

Public involvement requirements

It is the policy of the Metro Council to assure full compliance with Title VI of the Civil Rights Act of 1964, the Civil Rights Restoration Act of 1987, Executive Order 12898 on Environmental Justice and related statutes and regulations in all programs and activities. Title VI requires that no person in the United States of America shall, on the grounds of race, color, sex, or national origin, be excluded from the participation in, be denied the benefits of, or be otherwise subjected to discrimination under any program or activity for which Metro receives federal financial assistance.

Timeline

<p>Spring 2011 Goals - honors the 2007 MOU and reflects new mobility corridor approach - community investment strategy</p>	<ul style="list-style-type: none"> ▪ Developed by technical staff and elected officials, as well as affected interests ▪ Confirmed by the steering committee (April 27) ▪ Public outreach includes web updates, fact sheet, newsfeeds and community events
<p>Summer 2011 Problem statement and objectives - reflects existing and anticipated future conditions related to transportation, economic and community development and natural resources and identifies existing and future needs, opportunities and constraints</p>	<ul style="list-style-type: none"> ▪ Refined and confirmed by the steering committee (July 27) ▪ Presentations to full city councils ▪ Public outreach includes web updates, web survey, local newsletters, videos, newsfeeds, community events and panels of experts related to school operations, economic and community development, equity, freight and natural resources
<p>Fall 2011 Initial strategies - ties anticipated future conditions and potential solutions to local aspirations and illuminates the tradeoffs between different courses of action</p>	<ul style="list-style-type: none"> ▪ Reflects public and expert input ▪ Refined by the steering committee (mid-September to mid-October meeting) ▪ Public outreach includes public workshop, web updates, local newsletters, videos, newsfeeds and community events

<p>Preferred strategies - narrows solutions based on future conditions, local aspirations and the tradeoffs between different courses of action ties solutions to a timeline</p>	<ul style="list-style-type: none"> ▪ Reflects input from local elected councils ▪ Refined and confirmed by the steering committee (mid-November meeting) ▪ Public outreach includes web updates, videos, newsfeeds and community events
<p>Winter 2012 Initial implementation plan - identifies phased investments in the plan area</p>	<ul style="list-style-type: none"> ▪ Reflects input from local elected councils ▪ Refined by the steering committee (January or February meeting) ▪ Public outreach includes public workshop (tentative), web updates, local newsletters, videos, newsfeeds and community events
<p>Spring 2012 Final implementation plan - confirms phased investments in the plan area and identifies local implementation actions</p>	<ul style="list-style-type: none"> ▪ Confirmed by the steering committee (April or May meeting) ▪ Jurisdiction-specific components confirmed by local elected councils ▪ Public outreach includes web updates, local newsletters, videos, newsfeeds and community events

Outreach to date

Outreach Asterisk (*) indicates activities funded by resources outside of EMCP budget	Date	Audience targeted	Type	Number reached
East Multnomah County Transportation Committee (EMCTC) meeting	1/10/2011	Elected officials and interested persons	Meeting	
EMCTC meeting	2/7/2011	Elected officials and interested persons	Meeting	
Website published	3/1/2011	General	Web and social media	
Interested persons email list created	3/18/2011	Interested persons	Web and social media	
EMCTC meeting	4/11/2011	Elected officials and interested persons	Meeting	
Inter council get together	4/20/2011	Elected officials	Meeting	6
East Metro Connections Plan steering committee meeting	4/22/2011	Elected officials and interested persons	Meeting	30
Newsfeed - Local leaders advocate for prosperity	4/29/2011	General	Web and social media	64
Website updated (steering committee page created)	5/1/2011	General	Web and social media	

Outreach Asterisk (*) indicates activities funded by resources outside of EMCP budget	Date	Audience targeted	Type	Number reached
Metro weekly digest (4/29 newsfeed)	5/2/2011	General	Web and social media	917
Metro planning and development weekly digest (4/29 newsfeed)	5/2/2011	General	Web and social media	253
Shirley Craddick weekly digest (4/29 newsfeed)	5/2/2011	General	Web and social media	54
Barbara Roberts weekly digest (4/29 newsfeed)	5/2/2011	General	Web and social media	55
EMCTC meeting	5/9/2011	Elected officials and interested persons	Meeting	
East Gresham information fair	5/25/2011	Residents	Open house	25
EMCP fact sheet - spring 2011	5/25/2011	General	Print	
Inter council get together	5/26/2011	Elected officials	Meeting	
Gresham Barlow School District	6/2/2011	School board	Meeting	
City of Gresham - HEAL (Healthy Eating Active Living) engagement interview*	6/3/2011	Equity	Interview	
EMCTC meeting	6/6/2011	Elected officials and interested persons	Meeting	
Multnomah County Health Department (Healthy Communities by Design) engagement interview*	6/8/2011	Equity	Interview	
Website updated (public participation page created)	6/10/2011	General	Web and social media	
Newsfeed - Calling all East County residents	6/10/2011	General	Web and social media	
Metro planning and development weekly digest (6/10 newsfeed)	6/13/2011	General	Web and social media	252
Metro weekly digest (6/10 newsfeed)	6/13/2011	General	Web and social media	907
Coalition of Gresham Neighborhood Associations	6/14/2011	Community leaders	Meeting	14
Inter council get together	6/15/2011	Elected officials	Meeting	
Invite to sign up for interested persons list (via email)	6/15/2011	Residents	Web and social media	
Coalition of Gresham Neighborhoods engagement interview*	6/16/2011	Equity	Interview	
Coalition for a Livable Future (CLF) engagement interview*	6/17/2011	Equity	Interview	

Outreach Asterisk (*) indicates activities funded by resources outside of EMCP budget	Date	Audience targeted	Type	Number reached
Neighborhood Connections enewsletter (Gresham) (link to 6/10 newsfeed)	6/17/2011	Interested persons	Web and social media	500
Oregon truck driving championship	6/18/2011	Freight drivers	Open house	25
People for Parks engagement interview*	6/20/2011	Equity	Interview	
Davis, Hibbitts & Midghall, Inc. engagement interview*	6/20/2011	Equity	Interview	
Barbara Roberts weekly digest (6/10 newsfeed)	6/20/2011	General	Web and social media	52
Shirley Craddick weekly digest (6/10 newsfeed)	6/20/2011	General	Web and social media	51
Habitat for Humanity engagement interview*	6/21/2011	Equity	Interview	
Human Solutions, Inc. engagement interview*	6/21/2011	Equity	Interview	
Eastside United FC (Youth Soccer Club) engagement interview*	6/22/2011	Equity	Interview	
Gresham Downtown Development Association engagement interview*	6/22/2011	Equity	Interview	
Newsfeed - East Metro's cultural richness drives new outreach strategies	6/24/2011	General	Web and social media	
Gresham Library (Multnomah County Public Library System, City of Gresham Downtown Branch) engagement interview*	6/24/2011	Equity	Interview	
Metro planning and development weekly digest (6/24 newsfeed)	6/27/2011	General	Web and social media	255
APANO (Asian Pacific American Network of Oregon) engagement interview*	6/27/2011	Equity	Interview	
Center for Diversity and the Environment engagement interview*	6/28/2011	Equity	Interview	
Healthy Eating Active Living Community Forum	6/28/2011	Residents	Open house	

Outreach Asterisk (*) indicates activities funded by resources outside of EMCP budget	Date	Audience targeted	Type	Number reached
Home Forward (Housing Authority of Portland) engagement interview*	6/28/2011	Equity	Interview	
Upstream Public Health (UPH) engagement interview*	6/29/2011	Equity	Interview	
Worksource (East County Latino Service Providers) engagement interview*	6/29/2011	Equity	Interview	
General - Neighborhood Liaison (Gresham) engagement interview*	no date	Equity	Interview	
Fairview newsletter	7/1/2011	Residents	Direct mailing	
Troutdale newsletter	7/1/2011	Residents	Direct mailing	
Wood Village newsletter	7/1/2011	Residents	Direct mailing	
Gresham newsletter		Residents	Direct mailing	
Shirley Craddick weekly digest (6/24 newsfeed)	7/5/2011	General	Web and social media	51
City of Wood Village engagement interview*	7/6/2011	Equity	Interview	
Portland Plan engagement interview*	7/7/2011	Equity	Interview	
City of Portland, Public Involvement Advisory Committee engagement interview*	7/7/2011	Equity	Interview	
El Programa Hispano (Catholic Charities) engagement interview*	7/7/2011	Equity	Interview	
EMCTC meeting	7/11/2011	Elected officials	Meeting	
East Metro travel survey	7/12/2011	General	Web and social media	
City of Portland Disability Services engagement interview*	7/12/2011	Equity	Interview	
Oregon Opportunity Network engagement interview*	7/13/2011	Equity	Interview	
Neighborhood Connections enewsletter (Gresham) (link travel survey)	7/15/2011	Interested persons	Web and social media	500
Newsfeed - How do you travel?	7/22/2011	General	Web and social media	
Immigrant & Refugee Community Organization (IRCO) staff presentation*	7/22/2011	Equity	Meeting	100

Outreach Asterisk (*) indicates activities funded by resources outside of EMCP budget	Date	Audience targeted	Type	Number reached
Metro weekly digest (7/22 newsfeed)	7/25/2011	General	Web and social media	
Metro planning and development weekly digest (7/22 newsfeed)	7/25/2011	General	Web and social media	
Gresham Transportation System Plan open house	7/26/2011	General	Open house	
East Metro Connections Plan steering committee meeting	7/28/2011	Elected officials and interested persons	Meeting	
IRCO email outreach to community leaders*	July TBD	Equity	Web and social media	300
El Programa Hispano staff meeting*	August TBD	Equity	Meeting	
School district panel of experts	August TBD	Schools	Meeting	
Natural resources and parks panel of experts	August TBD	Environmental	Meeting	
Economic development panel of experts	August TBD	Economic development	Meeting	
Freight panel of experts	August TBD	Freight	Meeting	
EMCTC meeting	8/8/2011	Elected officials	Meeting	
Schools Uniting Neighborhoods transportation forum*	Sept TBD	Equity	Meeting	
EMCTC meeting	10/10/2011	Elected officials	Meeting	
East Metro Connections Plan public workshop	Oct TBD	General	Meeting	
EMCTC meeting	11/7/2011	Elected officials	Meeting	
EMCTC meeting	12/5/2011	Elected officials	Meeting	

Media appendix

The following news articles covered the East Metro Connections Plan during the months of April, May, June and July 2011.



Metro news

- HOME
- CALENDAR
- PLACES AND ACTIVITIES
- GARBAGE AND RECYCLING
- SUSTAINABLE LIVING
- PLANNING AND CONSERVATION
- MAPS AND DATA
- GRANTS
- JOBS AT METRO
- VOLUNTEER
- DOING BUSINESS
- NEWS
 - METRO NEWS
 - NEWS RELEASE ARCHIVE
 - VIDEOS
- ABOUT METRO

SUBSCRIBE TO FEED

RSS

SUBSCRIBE TO DIGEST

You can receive daily, weekly, or monthly e-mail digests of newsfeed posts. [Sign up for digest](#)

CONNECT WITH METRO



503-797-1700
503-797-1804 TDD
503-797-1797 fax

April 29, 2011 11:54 AM

Local leaders focus on the prosperity of East Metro

Advocates for the east side of the Portland metropolitan region agreed that economic vitality, livability, safety and environmental quality should be enhanced by the East Metro Connections Plan - a community investment strategy that will identify specific transportation, community and economic development projects in Fairview, Gresham, Troutdale, Wood Village and Multnomah County.

During the first meeting of the Steering Committee on April 22, elected officials, community and business leaders listened to Metro Council President Tom Hughes' insights from spending the morning touring the East Metro area. He asserted that the eastern part of the region has great bones in terms of future job growth and that the area has the opportunity to become one of the most important driving economic forces for the rest of the region. To realize that potential, he said, communities there are going to have to pull together to maximize our ability for economic development.

East Metro Connections Plan implements a new approach to allocating limited transportation dollars to ensure that regional transportation investments support local land use, community and economic development and the environment. Given this new approach, agreement on priorities will help the cities advocate for their local needs, while capitalizing on the opportunity to address issues that cross jurisdictional boundaries.

A few themes were repeated as Steering Committee members shared their hopes for the outcome of this effort. There was rousing agreement that everyone wants East Metro Connections Plan to be successful with the process resulting in economic development and prosperity. Some expressed the importance of focusing on the Interstate 84/U.S. Highway 26 transportation connection, while others endorsed broader aspirations. A comprehensive analysis of the transportation system will illuminate effective ways to serve residents, businesses and those who travel through the area. The transportation system is intrinsically connected to other elements that will also be analyzed, including economic, community and environmental issues.

The East Metro Connections Plan began in fall 2010 and will wrap up during summer 2012. The public will be invited to attend a workshop this summer to learn more about the project and provide input on local needs, evaluation criteria and the types of solutions decision-makers will be asked to consider.

[Read more about the East Metro Connections Plan](#)

[Learn about the Steering Committee and download meeting materials](#)

SHARE THIS:

SEARCH THE SITE

[»advanced search](#)

July 25, 2011 5:47 PM

[METRO NEWS HOME](#)

[ABOUT THE METRO NEWSFEED](#)

[MEDIA CONTACT](#)

UPDATES BY KEYWORD

- [activities \(164\)](#)
- [climate change \(33\)](#)
- [Community Investment Strategy \(91\)](#)
- [development \(140\)](#)
- [employment \(40\)](#)
- [field notes \(9\)](#)
- [finances and funding \(52\)](#)
- [grants \(38\)](#)
- [maps and data \(26\)](#)
- [natural areas \(103\)](#)
- [news coverage \(180\)](#)
- [parks and trails \(137\)](#)
- [pioneer cemeteries \(3\)](#)
- [planning and policy \(390\)](#)
- [public comment \(84\)](#)
- [reporting by Nick Christensen \(134\)](#)
- [solid waste \(35\)](#)
- [sustainable living \(193\)](#)
- [transportation \(238\)](#)
- [urban and rural reserves \(91\)](#)
- [urban growth boundary \(81\)](#)
- [visitor venues \(83\)](#)
- [volunteering \(22\)](#)

MONTHLY ARCHIVES

- [July 2011 \(33\)](#)
- [June 2011 \(53\)](#)
- [May 2011 \(68\)](#)
- [April 2011 \(53\)](#)
- [March 2011 \(58\)](#)
- [February 2011 \(59\)](#)
- [January 2011 \(49\)](#)
- [December 2010 \(50\)](#)
- [November 2010 \(50\)](#)
- [October 2010 \(61\)](#)
- [September 2010 \(72\)](#)
- [August 2010 \(60\)](#)
- [July 2010 \(57\)](#)
- [June 2010 \(45\)](#)
- [May 2010 \(54\)](#)
- [April 2010 \(34\)](#)
- [March 2010 \(24\)](#)
- [February 2010 \(38\)](#)
- [January 2010 \(29\)](#)
- [December 2009 \(38\)](#)
- [November 2009 \(8\)](#)
- [October 2009 \(35\)](#)
- [September 2009 \(33\)](#)
- [August 2009 \(4\)](#)

ABOUT

Find news, stories and things to do on Metro's website. Subscribe to daily, weekly or monthly e-mail digests, or view updates in your news reader.

[METRO HOME](#) | [PLACES AND ACTIVITIES](#) | [GARBAGE AND RECYCLING](#) | [SUSTAINABLE LIVING](#) | [PLANNING AND STEWARDSHIP](#) | [MAPS AND DATA](#) | [GRANTS](#) | [JOBS AT METRO](#) | [VOLUNTEER](#) | [DOING BUSINESS](#) | [NEWS](#) | [CALENDAR](#) | [ABOUT METRO](#) |

© 2011 Metro Regional Government. All rights reserved.
Contact feedback@oregonmetro.gov with questions regarding this site.



- HOME
- CALENDAR
- PLACES AND ACTIVITIES
- GARBAGE AND RECYCLING
- SUSTAINABLE LIVING
- PLANNING AND CONSERVATION
- MAPS AND DATA
- GRANTS
- JOBS AT METRO
- VOLUNTEER
- DOING BUSINESS
- NEWS
 - METRO NEWS
 - NEWS RELEASE ARCHIVE
 - VIDEOS
- ABOUT METRO

SUBSCRIBE TO FEED

RSS

SUBSCRIBE TO DIGEST

You can receive daily, weekly, or monthly e-mail digests of newsfeed posts. [Sign up for digest](#)

CONNECT WITH METRO



503-797-1700
503-797-1804 TDD
503-797-1797 fax

June 10, 2011 4:48 PM

Calling all East County residents

Did you know your city government is working to prioritize how it will spend its share of state and federal dollars over the next 20 years? This process is called the East Metro Connections Plan, and it will result in agreement on near- and long-term investments.

In your neighborhood, these improvements should help you and your neighbors better meet your daily needs. For example, you may see new or safer crosswalks and better traffic flow at intersections. For employers and community developers, the plan will provide certainty and incentive for long-term investments. Agreement on near- and long-term investments also increases local government's ability to leverage regional, state and federal funds for our communities.

You are a critical part of the East Metro Connections Plan. By mid-2012, your feedback will contribute to agreements and an implementation plan for future investments in Fairview, Gresham, Troutdale, Wood Village and Multnomah County. Visit the East Metro Connections Plan webpage below to see the latest fact sheet, subscribe to plan updates and sign up to learn about opportunities to get involved.

The plan's timeline includes multiple opportunities to participate in key decisions this year.

- Spring 2011– Identify the problems we need to solve
- Summer 2011– Develop potential solutions
- Fall 2011– Evaluate and prioritize solutions
- Winter and spring 2012 – Agree on local and regional actions to implement solutions

The East Metro Connections Plan brings governments together to develop a community investment strategy that supports the prosperity and livability of the East Metro area. Born out of a transportation focus, it breaks new ground by linking previously separate efforts on jobs, parks, housing, equity and transportation. In this way, different investments reinforce each other and can add up to more than the sum of their parts.

[Learn more about the East Metro Connections Plan](#)

SHARE THIS:

SEARCH THE SITE

[»advanced search](#)

July 25, 2011 5:47 PM

- METRO NEWS HOME
- ABOUT THE METRO NEWSFEED
- MEDIA CONTACT

UPDATES BY KEYWORD

- activities (164)
- climate change (33)
- Community Investment Strategy (91)
- development (140)
- employment (40)
- field notes (9)
- finances and funding (52)
- grants (38)
- maps and data (26)
- natural areas (103)
- news coverage (180)
- parks and trails (137)
- pioneer cemeteries (3)
- planning and policy (390)
- public comment (84)
- reporting by Nick Christensen (134)
- solid waste (35)
- sustainable living (193)
- transportation (238)
- urban and rural reserves (91)
- urban growth boundary (81)
- visitor venues (83)
- volunteering (22)

MONTHLY ARCHIVES

- July 2011 (33)
- June 2011 (53)
- May 2011 (68)
- April 2011 (53)
- March 2011 (58)
- February 2011 (59)
- January 2011 (49)
- December 2010 (50)
- November 2010 (50)
- October 2010 (61)
- September 2010 (72)
- August 2010 (60)
- July 2010 (57)
- June 2010 (45)
- May 2010 (54)
- April 2010 (34)
- March 2010 (24)
- February 2010 (38)
- January 2010 (29)
- December 2009 (38)
- November 2009 (8)
- October 2009 (35)
- September 2009 (33)
- August 2009 (4)

ABOUT

Find news, stories and things to do on Metro's website. Subscribe to daily, weekly or monthly e-mail digests, or view updates in your news reader.

METRO HOME | PLACES AND ACTIVITIES | GARBAGE AND RECYCLING | SUSTAINABLE LIVING | PLANNING AND STEWARDSHIP | MAPS AND DATA | GRANTS | JOBS AT METRO | VOLUNTEER | DOING BUSINESS | NEWS | CALENDAR | ABOUT METRO |

© 2011 Metro Regional Government. All rights reserved.
Contact feedback@oregonmetro.gov with questions regarding this site.



EDITORIAL

Focus on jobs, jobs, jobs for a better economy

The Gresham Outlook, Jun 18, 2011

Take heart Oregon, but do not be satisfied. The state's unemployment rate is finally approaching the national average of 9.1 percent and the number of working Oregonians is gradually rising after robust job increases in January and February.

The Oregon Employment Department on Tuesday announced that Oregon's unemployment rate was 9.3 percent in May. The state's economy added 1,300 non-farm jobs in May and employment has grown by 16,800 jobs since the start of 2011.

But these statistics also show just how far Oregon's economy has to climb before it can provide a job for everyone who wants one. Oregon's place in the national economy remains woeful. The state's unemployment rate in April was the nation's 12th-worst — tied with Idaho and Tennessee.

179,201 workers still without jobs

While incremental employment increases are welcome indeed, they hardly are an indication of a booming economy and do little to improve the fate of the 179,201 Oregonians who would like to work, but remain unemployed. Many more people are underemployed in jobs that don't provide the wages or hours that these workers were accustomed to before the recession.

Oregon's rate of economic growth is being slowed, in part, by factors outside the state's control, including high gasoline prices that depress discretionary spending among consumers. Yet, there are steps that Oregon and metro-area leaders can take to improve economic performance in the short and long term.

Gov. John Kitzhaber highlighted two of those measures on Tuesday when he responded to the most recent employment report. Kitzhaber pointed to the Legislature's movement on his so-called "Cool Schools" initiative, which would allow school districts to apply for low-interest loans to retrofit aging K-12 schools with energy-efficient technology.

He also put in a plug for his industrial-lands legislation, which speeds up the permitting process for key industrial sites.

If approved by the Legislature, both of these bills could help improve the overall economy. But local communities also must take action to help spur economic change, including these measures:

- Regionally, the Metro Council and its local government partners — including cities as well as Multnomah, Washington and Clackamas counties — must protect manufacturing-job sites from conversion to other uses or from undue restrictions. They also must help foster the cleanup of brownfield sites that are unused because of contamination.
- This fall, these same regional partners must focus on adding a reasonable supply of new industrial land sites to the regional urban growth boundary. Such expansion of available land for jobs will ensure that new or existing businesses have a place to locate or grow in the near future.
- Local jurisdictions should cap taxes and fees for anything other than existing services until Oregon starts meeting Kitzhaber's job growth goals for six consecutive months. Otherwise, businesses and families will continue to bear a tax burden that will dampen economic recovery and new job creation.
- Private sector, educational, local government and civic leaders should implement immediate strategies that help employ Oregonians in higher-wage, high-value jobs. The Oregon Business Plan and Kitzhaber made this same call to action earlier this year. Without such focus, we will be a region and an economy that adds new jobs, but whose residents earn far less than people in places such as Denver, Minneapolis or Austin.

These and other policies and practices must be an immediate priority for Oregon's residents and leaders — unless this state wants to be satisfied with a tepid recovery that could prove to be both insufficient and short-lived.

Copyright 2011 Pamplin Media Group, 6605 S.E. Lake Road, Portland, OR 97222 • 503-226-6397



Metro news

- HOME
- CALENDAR
- PLACES AND ACTIVITIES
- GARBAGE AND RECYCLING
- SUSTAINABLE LIVING
- PLANNING AND CONSERVATION
- MAPS AND DATA
- GRANTS
- JOBS AT METRO
- VOLUNTEER
- DOING BUSINESS
- NEWS
 - METRO NEWS**
 - NEWS RELEASE ARCHIVE
 - VIDEOS
- ABOUT METRO

SUBSCRIBE TO FEED

[RSS](#)

SUBSCRIBE TO DIGEST

You can receive daily, weekly, or monthly e-mail digests of newsfeed posts. [Sign up for digest](#)

CONNECT WITH METRO



503-797-1700
503-797-1804 TDD
503-797-1797 fax

June 24, 2011 4:05 PM

East Metro's cultural richness drives new outreach strategies

The East Metro area is home to one of the region's most diverse populations. In the area that includes the cities of Fairview, Gresham, Troutdale and Wood Village, regional and local governments are working together to ensure sometimes underrepresented communities have meaningful opportunities to influence projects that can improve their daily lives.

A key component of Metro's involvement in the **East Metro Connections Plan** is a focus on equity and health. Current efforts include developing an on-the-ground understanding of diverse populations and identifying culturally-relevant engagement methods, conventional or not. This work includes learning from neighborhood leaders and community-based organizations that provide services to minority, elderly, disabled, youth and at-risk populations. The goal is to maximize the opportunities for public input that is representative of the community and enhance outreach efforts to similar populations for future projects.

The plan will be a part of several community events over the summer. On Tuesday, June 28, a bilingual (English/Spanish) community forum will engage participants on healthy eating and active living and what communities should be doing to improve their built environment. This event, sponsored by the City of Gresham's Healthy Eating Active Living program, will take place from 5:30 to 7:30 p.m. at the Rockwood Library, 17917 SE Stark Street.

Input from this and other events will influence the East Metro Connections Plan and other local processes. The East Metro Connections Plan brings governments together to develop a community investment strategy that supports the prosperity and livability of the East Metro area. Born out of a transportation focus, it breaks new ground by linking previously separate efforts on jobs, parks, housing, equity and transportation. In this way, different investments reinforce each other and can add up to more than the sum of their parts. It will result in agreement on near- and long-term investments. In your neighborhood, these improvements should help you and your neighbors meet your daily needs. For example, you may see new or safer crosswalks and better traffic flow at intersections.

[Get details on the June 28 Healthy Eating Active Living community forum](#)

[Learn more about the East Metro Connections Plan](#)

SHARE THIS:

SEARCH THE SITE

[»advanced search](#)

July 25, 2011 5:46 PM

- METRO NEWS HOME
- ABOUT THE METRO NEWSFEED
- MEDIA CONTACT

UPDATES BY KEYWORD

- [activities \(164\)](#)
- [climate change \(33\)](#)
- [Community Investment Strategy \(91\)](#)
- [development \(140\)](#)
- [employment \(40\)](#)
- [field notes \(9\)](#)
- [finances and funding \(52\)](#)
- [grants \(38\)](#)
- [maps and data \(26\)](#)
- [natural areas \(103\)](#)
- [news coverage \(180\)](#)
- [parks and trails \(137\)](#)
- [pioneer cemeteries \(3\)](#)
- [planning and policy \(390\)](#)
- [public comment \(84\)](#)
- [reporting by Nick Christensen \(134\)](#)
- [solid waste \(35\)](#)
- [sustainable living \(193\)](#)
- [transportation \(238\)](#)
- [urban and rural reserves \(91\)](#)
- [urban growth boundary \(81\)](#)
- [visitor venues \(83\)](#)
- [volunteering \(22\)](#)

MONTHLY ARCHIVES

- [July 2011 \(33\)](#)
- [June 2011 \(53\)](#)
- [May 2011 \(68\)](#)
- [April 2011 \(53\)](#)
- [March 2011 \(58\)](#)
- [February 2011 \(59\)](#)
- [January 2011 \(49\)](#)
- [December 2010 \(50\)](#)
- [November 2010 \(50\)](#)
- [October 2010 \(61\)](#)
- [September 2010 \(72\)](#)
- [August 2010 \(60\)](#)
- [July 2010 \(57\)](#)
- [June 2010 \(45\)](#)
- [May 2010 \(54\)](#)
- [April 2010 \(34\)](#)
- [March 2010 \(24\)](#)
- [February 2010 \(38\)](#)
- [January 2010 \(29\)](#)
- [December 2009 \(38\)](#)
- [November 2009 \(8\)](#)
- [October 2009 \(35\)](#)
- [September 2009 \(33\)](#)
- [August 2009 \(4\)](#)

ABOUT

Find news, stories and things to do on Metro's website. Subscribe to daily, weekly or monthly e-mail digests, or view updates in your news reader.

METRO HOME | PLACES AND ACTIVITIES | GARBAGE AND RECYCLING | SUSTAINABLE LIVING | PLANNING AND STEWARDSHIP | MAPS AND DATA | GRANTS | JOBS AT METRO | VOLUNTEER | DOING BUSINESS | NEWS | CALENDAR | ABOUT METRO |

The funding for the project came from the Metro Parks Bond. The project was designed by Harper Houf Peterson Righellis Inc. The permitting was done by ESA and Associates. The boardwalk was designed by Scott Sloan, City of Wood Village. Construction was by Henderson Land Services.



The process is not yet complete and may never be as the City looks to the future for what else might be done to add value to the natural environment and opportunities for all of us to experience it.



Investing in Wood Village and the East Metro area

by Metro Councilor Shirley Craddick

One of my goals as your Metro Councilor is to do what I can to ensure that Wood Village's aspirations come to fruition. This part of the Metro region needs more jobs; good jobs that can support a family. Metro and the City of Wood Village are being proactive on this front by partnering with other nearby cities on the East Metro Connections Plan.

This effort will bring governments together to identify important public investment projects and commit to implementing those that **advance our prosperity**. Agreement on near- and long-term investments increases our ability to leverage regional, state and federal funds for our communities.

In **your neighborhood**, these improvements would help you and your neighbors meet your daily needs. For example, you may see new or safer crosswalks and better traffic flow at intersections. For employers and community developers, a plan with agreement from local jurisdictions that looks out to 2035 provides certainty and incentive for long-term investments.

East Metro Connections Plan will be successful to the degree that it reflects the values and interests of the community it is intended to serve. **That means there's an important role for you!**

- Visit the project website at www.oregonmetro.gov/eastmetro
- Sign up for email updates by sending a request to trans@oregonmetro.gov
- Request a briefing for your neighborhood association or local event
- Attend a Steering Committee meeting and share your comments
- Participate in public workshops later this year; stay tuned for more information or check the project website



Next steps include

- Spring 2011 – Identify the problems we need to solve
- Summer 2011 – Develop potential solutions
- Fall 2011 – Evaluate and prioritize solutions
- Winter and spring 2012 – Agree on local and regional actions to implement solutions

We hope you will become involved and let us know if you have questions, 503-797-1756.

East Metro Connections Plan

Investing in Troutdale and the East Metro Area

by Shirley Craddick, Metro Councilor



One of my goals as your Metro Councilor is to do what I can to ensure that Troutdale's aspirations come to fruition. This part of the Metro region needs more jobs, good jobs that can support a family. Metro and the City of Troutdale are being proactive on this front by partnering with other nearby cities on the East Metro Connections Plan.

This effort will bring governments together to identify important public investment projects and commit to implementing those that advance our prosperity. Agreement on near and long-term investments increases our ability to leverage regional, state and federal funds for our communities.

In your neighborhood, these improvements would help you and your neighbors meet your daily needs. For example, you may see new or safer crosswalks and better traffic flow at intersections. For employers and community developers, a plan with agreement from local jurisdictions that looks out to Year 2035 provides certainty and incentive for long-term investments.

The East Metro Connections Plan will be successful to the degree that it reflects the values and interests of the community it is intended to serve. That means there's an important role for you!

- Visit the project website at www.oregonmetro.gov/eastmetro
- Sign up for email updates by sending a request to trans@oregonmetro.gov
- Request a briefing for your neighborhood association or local event
- Attend a Steering Committee meeting and share your comments
- Participate in public workshops later this year; stay tuned for more information or check the project website

Next steps include:

- Spring 2011 – Identify the problems we need to solve
- Summer 2011 – Develop potential solutions
- Fall 2011 – Evaluate and prioritize solutions
- Winter and spring 2012 – Agree on local and regional actions to implement solutions

Let us know if you have questions, by calling the Metro Planning Department at 503-797-1756. We hope you will become involved.

Our office has been receiving an increasing number of inquiries regarding chickens and roosters. We do not as yet have a Municipal Code addressing the issue.

CODE CORNER

by John Copeland, Code Enforcement Officer

Can I Raise Chickens in Troutdale?

Under the City of Troutdale Development Code, Chapter 3, Zoning Districts, the only locations where live-stock or poultry can be kept are those lots zoned R-20, low density residential. These lots have a minimum lot size of 20,000 square feet per single family dwelling. On R-20 lots the code states that no poultry or livestock, other than household pets, shall be housed within 100 feet of any residence other than a dwelling on the same lot.

The cities of Portland and Gresham both have specific municipal codes relating to chickens and roosters. They allow up to three chickens to be kept in residential areas after a permit has been obtained. Both cities prohibit roosters. There are a number of restrictions regarding coops and runs. Both must be at least ten feet from all property lines and coops must be at least twenty five feet from residences on a different lot or parcel.

For the time being we are advising those who wish to have chickens that we will allow up to three chickens, but no roosters, as long as we don't receive nuisance complaints from neighbors. Most of the complaints our office receives are regarding roosters crowing at all hours and disturbing nearby residents.

At this point we do not have a permit process so we will respond to complaints on a case by case basis; however, construction of chicken coops will be subject to the accessory structure standards of the Troutdale Development Code.



Check with the Community Development Department for those standards at 503-674-7228.

Another issue that generates a large number of complaints this time of year is tall grass and weeds.

Troutdale Municipal Code 8.28.070(19) - Prohibits uncontrolled or uncultivated growth of weeds, brush, poison

Grass: How High is Too High?

oak, poison ivy, tansy ragwort or grasses over fourteen inches in height which offer vector or rodent harborage, contribute noxious pollens to the atmosphere, constitute a fire hazard or unreasonably interfere with the use and enjoyment of abutting public or private property.

This code applies to the whole property, not just the front yard. It is much easier to keep a yard maintained than it is to bring it into compliance after it gets out of control. Please do your part. Together we can ensure that Troutdale continues to be a great place to live.

Building Department Changes Begin July 1

Inspection schedule and permit counter assistance is affected, so call before you go to City Hall!

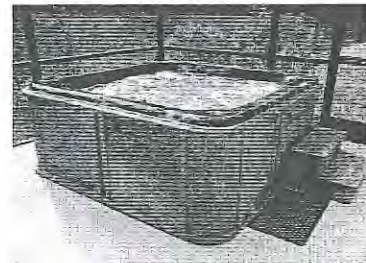
Effective July 1, 2011, The Building Safety Department will perform inspections ON TUESDAYS AND THURSDAYS ONLY. Please request your inspection by phone at 503-674-7204, or by fax at 503-667-0524, or e-mail inspection@ci.troutdale.or.us.

Before coming to visit, please call ahead at 503-674-7229 or 503-665-5175 to ensure that Building Safety Department staff is available to see you. You can also visit our web site to view a monthly inspection calendar at <http://www.ci.troutdale.or.us/building/> and click the calendar icon.

Things to Know Before Installing that Hot Tub or Swimming Pool

Thinking about installing a hot tub or an above ground swimming pool? You need to know that there are certain code requirements that go along with these additions to your property. The following regulations and questions apply to hot tubs and above ground pools over 24 inches in depth.

You must apply for a City Development Permit before installing the hot tub or pool. The permit application asks that you show where the hot tub or pool will be located on the property, its dimensions, and the maximum depth of water it can hold. The Development Permit fee is \$25.00. Review time is less than one week. Permit applications can be obtained from the City's Community Development Department.



Troutdale Development Code requires you to enclose your spa or swimming pool with a fence or other enclosure.

- A hot tub or pool must be placed at least three feet from the house.
- A fence at least four feet high with a self-closing, self-latching gate is required around the pool or hot tub.
- The hot tub or pool must be set back from the rear and side property lines the same distance as is required for other residential accessory structures (the setback differs by zone).
- Electrical and plumbing permits might also apply. Check with the Building Department about these permits.
- Where will you drain the hot tub or swimming pool? Draining the water into the street is prohibited. Draining the water onto the ground must not flow onto your neighbor's property. Draining water to the sanitary sewer system requires a plumbing permit and authorization from the City Public Works Department.

Follow these rules and you are on your way to enjoying the simple pleasures that a home hot tub or swimming pool has to offer. For questions and assistance in this process, or to obtain the Development Permit Application, please call the Senior Planner at 503-674-7228.

History Tidbit

by Tim Hills, McMenamins Historian

(Continued from Page 1)

A series of floods and fires brought prosperous saloonman Joe Penny to Edgefield; family politics brought General Stonewall Jackson's nephew here. Frankie of Frankie and Johnny notoriety had just won the prestigious Urban League award when she became a ward of the county. Then, there was Mrs. McMenamin, who told her boys that such a fate would be theirs, too, if they kept on with those taverns... they did; she was right, but it's turned out quite nicely in the end.

Of course, the McMenamin brothers wouldn't have been able to launch their Edgefield adventure had it not been for the tenaciousness of the small but mighty Troutdale Historical Society, which kept the wrecking ball from swinging.

Maintain Your Street Trees

The City of Troutdale needs your help to keep our streets clean and neighborhoods livable. Please do your part to trim the street trees adjacent to your property to these height requirements. Troutdale's Municipal Code requires that street trees be maintained at a height of 11 feet over the curb and 7 1/2 feet over the sidewalk. Any limbs that obstruct street and stop signs should be trimmed. For questions regarding street trees or street sweeping, call the Public Works Streets Division at 503-674-3300.



Metro news

- HOME
- CALENDAR
- PLACES AND ACTIVITIES
- GARBAGE AND RECYCLING
- SUSTAINABLE LIVING
- PLANNING AND CONSERVATION
- MAPS AND DATA
- GRANTS
- JOBS AT METRO
- VOLUNTEER
- DOING BUSINESS
- NEWS
 - METRO NEWS
 - NEWS RELEASE ARCHIVE
 - VIDEOS
- ABOUT METRO

SUBSCRIBE TO FEED

[RSS](#)

SUBSCRIBE TO DIGEST

You can receive daily, weekly, or monthly e-mail digests of newsfeed posts. [Sign up for digest](#)

CONNECT WITH METRO



503-797-1700
503-797-1804 TDD
503-797-1797 fax

July 22, 2011 3:14 PM

How do you get around East Metro? Take a short survey

Help decision-makers understand what you experience as you drive, bike, walk or take transit in the East Metro area. Next spring, the cities of Gresham, Fairview, Wood Village and Troutdale will prioritize near- and long-term transportation investments. Participate in a short survey to let them know what works for you and what you think should be improved.

In your neighborhood, these future improvements should help you and your neighbors meet daily needs. For example, you may see new or safer crosswalks and better traffic flow at intersections. For employers and community developers, this agreement provides certainty and incentive for long-term investments. Agreement on near- and long-term investments increases local government's ability to leverage regional, state and federal funds for communities.

The East Metro Connections Plan brings governments together to develop a community investment strategy that supports the prosperity and livability of the East Metro area. Born out of a transportation focus, it breaks new ground by linking previously separate efforts on jobs, parks, housing, equity and transportation. In this way, different investments reinforce each other and add up to more than the sum of their parts.

- [Take the survey](#)
- [Find out more about East Metro Connections Plan](#)
- [Sign up for email updates](#)

SHARE THIS:

SEARCH THE SITE

[»advanced search](#)

July 25, 2011 5:42 PM

- [METRO NEWS HOME](#)
- [ABOUT THE METRO NEWSFEED](#)
- [MEDIA CONTACT](#)

UPDATES BY KEYWORD

- [activities \(164\)](#)
- [climate change \(33\)](#)
- [Community Investment Strategy \(91\)](#)
- [development \(140\)](#)
- [employment \(40\)](#)
- [field notes \(9\)](#)
- [finances and funding \(52\)](#)
- [grants \(38\)](#)
- [maps and data \(26\)](#)
- [natural areas \(103\)](#)
- [news coverage \(180\)](#)
- [parks and trails \(137\)](#)
- [pioneer cemeteries \(3\)](#)
- [planning and policy \(390\)](#)
- [public comment \(84\)](#)
- [reporting by Nick Christensen \(134\)](#)
- [solid waste \(35\)](#)
- [sustainable living \(193\)](#)
- [transportation \(238\)](#)
- [urban and rural reserves \(91\)](#)
- [urban growth boundary \(81\)](#)
- [visitor venues \(83\)](#)
- [volunteering \(22\)](#)

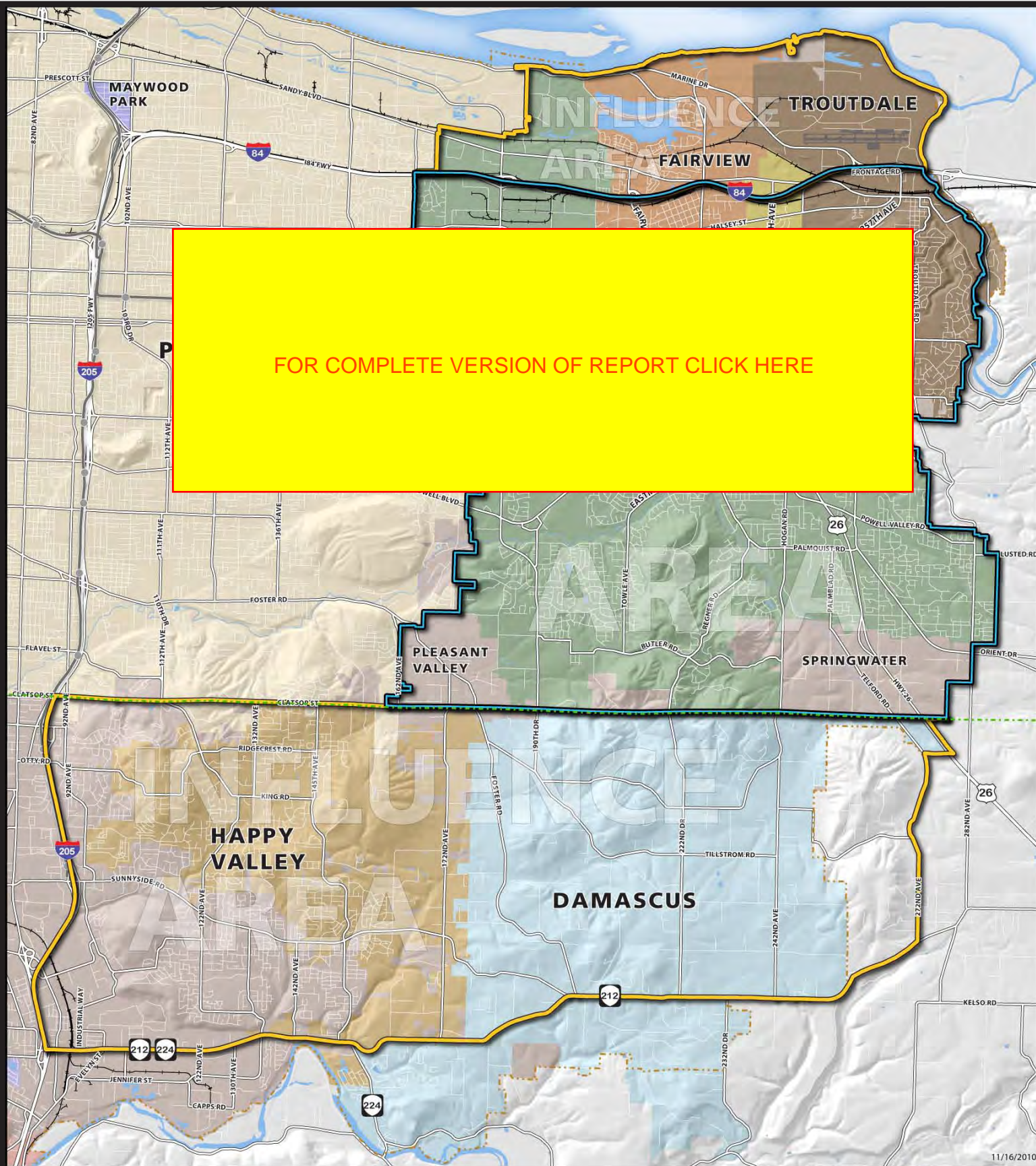
MONTHLY ARCHIVES

- [July 2011 \(33\)](#)
- [June 2011 \(53\)](#)
- [May 2011 \(68\)](#)
- [April 2011 \(53\)](#)
- [March 2011 \(58\)](#)
- [February 2011 \(59\)](#)
- [January 2011 \(49\)](#)
- [December 2010 \(50\)](#)
- [November 2010 \(50\)](#)
- [October 2010 \(61\)](#)
- [September 2010 \(72\)](#)
- [August 2010 \(60\)](#)
- [July 2010 \(57\)](#)
- [June 2010 \(45\)](#)
- [May 2010 \(54\)](#)
- [April 2010 \(34\)](#)
- [March 2010 \(24\)](#)
- [February 2010 \(38\)](#)
- [January 2010 \(29\)](#)
- [December 2009 \(38\)](#)
- [November 2009 \(8\)](#)
- [October 2009 \(35\)](#)
- [September 2009 \(33\)](#)
- [August 2009 \(4\)](#)

ABOUT

Find news, stories and things to do on Metro's website. Subscribe to daily, weekly or monthly e-mail digests, or view updates in your news reader.

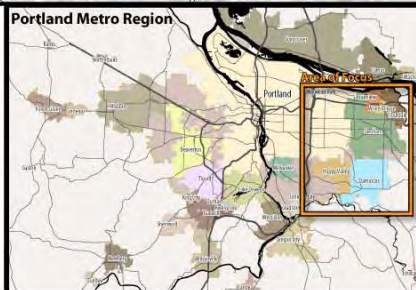
METRO HOME | PLACES AND ACTIVITIES | GARBAGE AND RECYCLING | SUSTAINABLE LIVING | PLANNING AND STEWARDSHIP | MAPS AND DATA | GRANTS | JOBS AT METRO | VOLUNTEER | DOING BUSINESS | NEWS | CALENDAR | ABOUT METRO |



**East Metro Connections Plan
Plan and Influence Areas**

 Plan Area
 County Line
 Light Rail
 Influence Area
 Urban Growth Boundary
 Railroad

Plan Area (Area for which improvements will be proposed): East Multnomah County, which includes the four city area of Gresham, Fairview, Wood Village, Troutdale and the unincorporated Pleasant Valley and Springwater areas between I-84 (north) and the County Line (south).
 Influence Area: Comprises two areas within two county/six city area (including Happy Valley and Damascus): 1) The portions of the 4 city area between the Columbia River (north) to I-84 (south) and 2) Between the County Line (north) and HWY 212 (south), and I-205 (west) to 272nd Avenue (east). The Influence Area will include a level of analysis sufficient to assess connectivity and land use relationships with the Plan Area.



- Project Goals**
 Support north/south connectivity between I-84 and US 26, as well as east/west connectivity and capacity in the East Metro plan area.
- Make the best use of the existing transportation system.*
- Develop multiple solutions that encompass all transportation modes.*
- Foster economic vitality.*
- Distribute both benefits and burdens of growth.*
- Enhance the livability and safety of East Metro communities. Ensure that East Metro is a place where people want to live, work and play.*
- Support the local land use vision of each community.*
- Enhance the natural environment.*

Overview

This document is intended to orient you to preliminary technical findings of the East Metro Connections Plan. The findings focus on the transportation system and related issues. From these findings, we can begin to see problems and opportunities. When we knit these together, we form an overall picture of the problem that the East Metro Connections Plan can address.

The Steering Committee will provide input and seek to confirm a working problem statement. This problem statement is based on what we know now and what we anticipate in the future. The Steering Committee will revisit the working problem statement should we discover new or contrary information.

Next Steps

From a shared understanding of the problem, we can begin to talk about solutions. A range of strategies designed to solve the problems will be proposed and evaluated in fall 2011. The Steering Committee, local elected councils and commissions, key stakeholders and the general public will be asked to provide feedback on proposed strategies.

As the evaluation yields results for consideration, the Steering Committee will work to refine and confirm preferred strategies in collaboration with their respective elected bodies during the winter and spring of 2012. The Steering Committee will also weigh in on an implementation plan that identifies specific investments and gives a blueprint to phasing and funding, in order to achieve the plan goals and move the communities forward, together.

Table of Contents

Problem Statement.....Page 2
 Current Vehicular Conditions.....Page 3
 Freight and Goods Movement.....Page 5
 Transit.....Page 7
 Active Transportation (walking, biking, access to transit).....Page 8
 Transportation System Utilization.....Page 10
 Safety.....Page 11
 Households, Jobs, and Demographics.....Page 12
 Economic Development.....Page 13
 Parks and Natural Resources.....Page 15
 Travel Districts.....Page 16
 Relationship of Plan Goals to Topic Areas.....Page 17

July 27, 2011

**East Metro
Connections Plan
Working Problem
Statement Packet**