

# Work plan approach



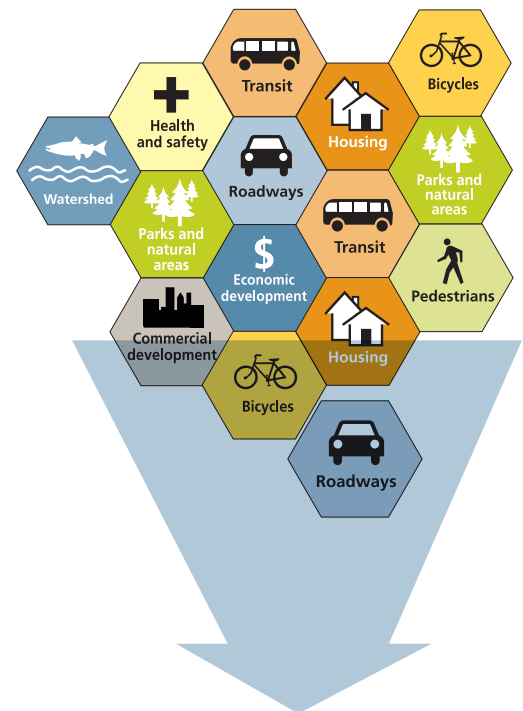
**1** Identify policy framework and existing conditions



Opportunities and challenges  
Goals and objectives  
Evaluation criteria

**2**

Develop wide range of alternatives



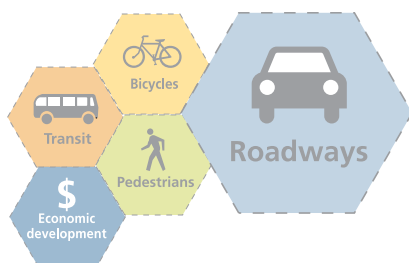
**3**

Narrow range of alternatives

**4**

Define integrated strategies that best meet goals and objectives

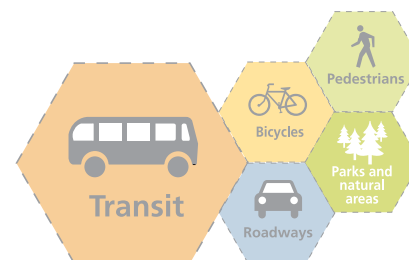
Example A



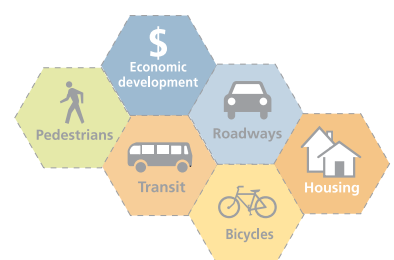
Example B



Example C



Example D



**5**

Evaluate and prioritize preferred integrated strategy

**6**

Identify commitments and implementation strategy

