



G R E A T P L A C E S

Corridor

Portland • Sherwood • Tigard • Tualatin
Beaverton • Durham • King City • Lake Oswego
Multnomah County • Washington County
ODOT • TriMet • Metro

Building the shared investment strategies

Southwest Corridor Plan Steering
Committee | November 26, 2012

Screening process



Approach and methodology:

- ◆ Meets the needs in the corridor
- ◆ Enhances or supports the existing system
- ◆ Identifies potential investment magnitudes and impacts

Screening process

Results:

- ◆ Identifies projects that support the land use goals
- ◆ Focus on the most promising projects
- ◆ Identifies level of effort needed for implementation



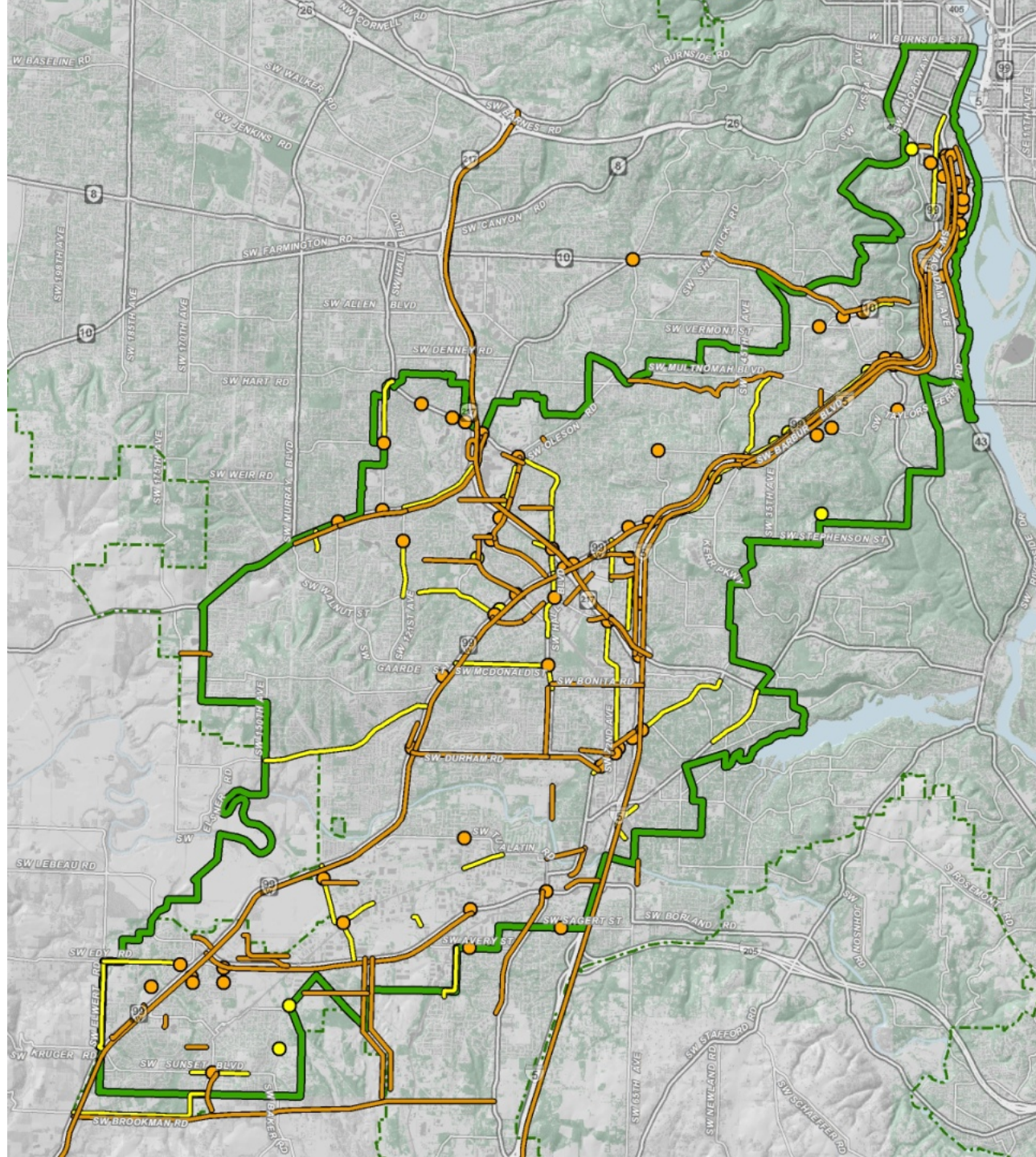
Project inventories

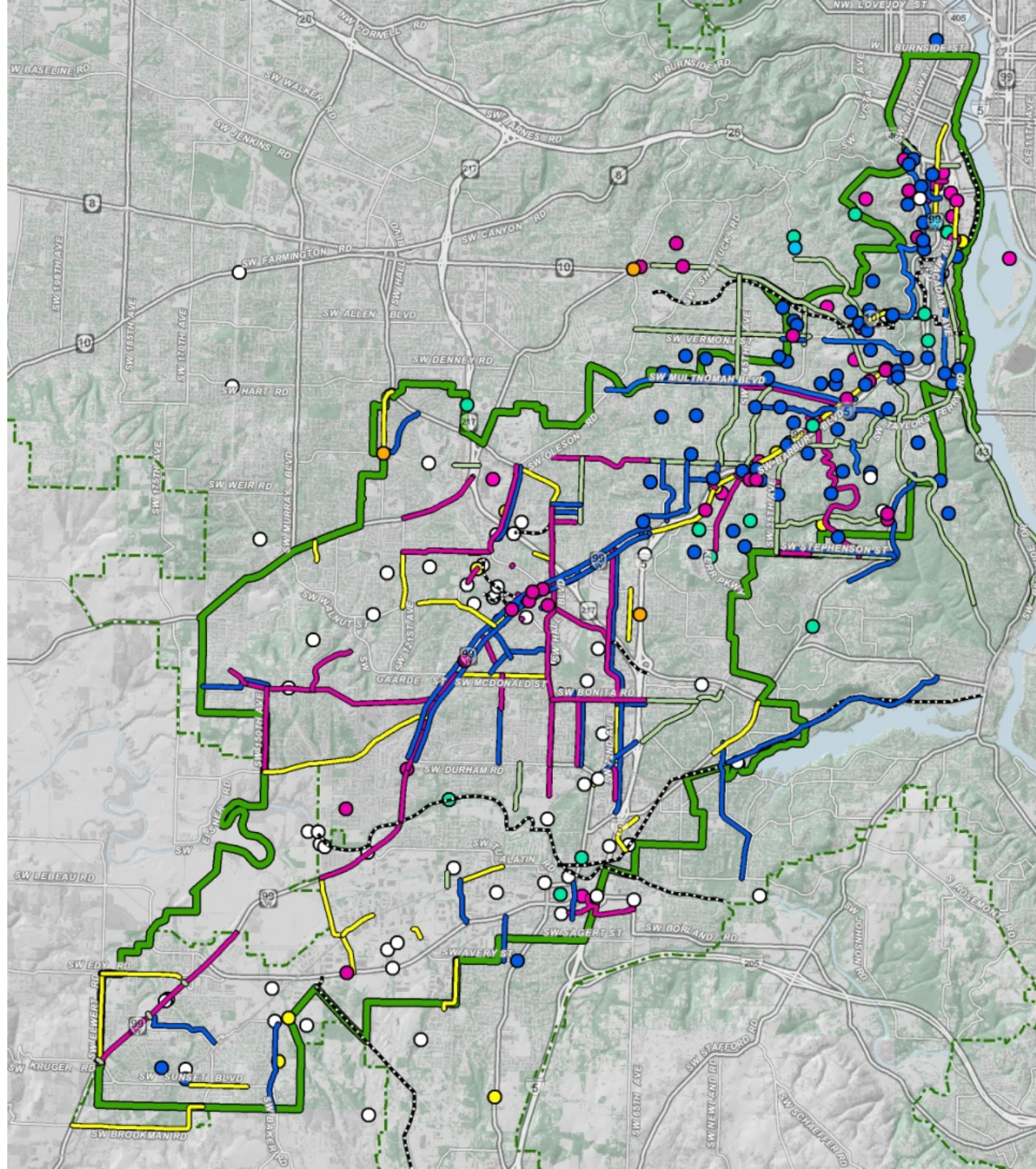
Project lists:

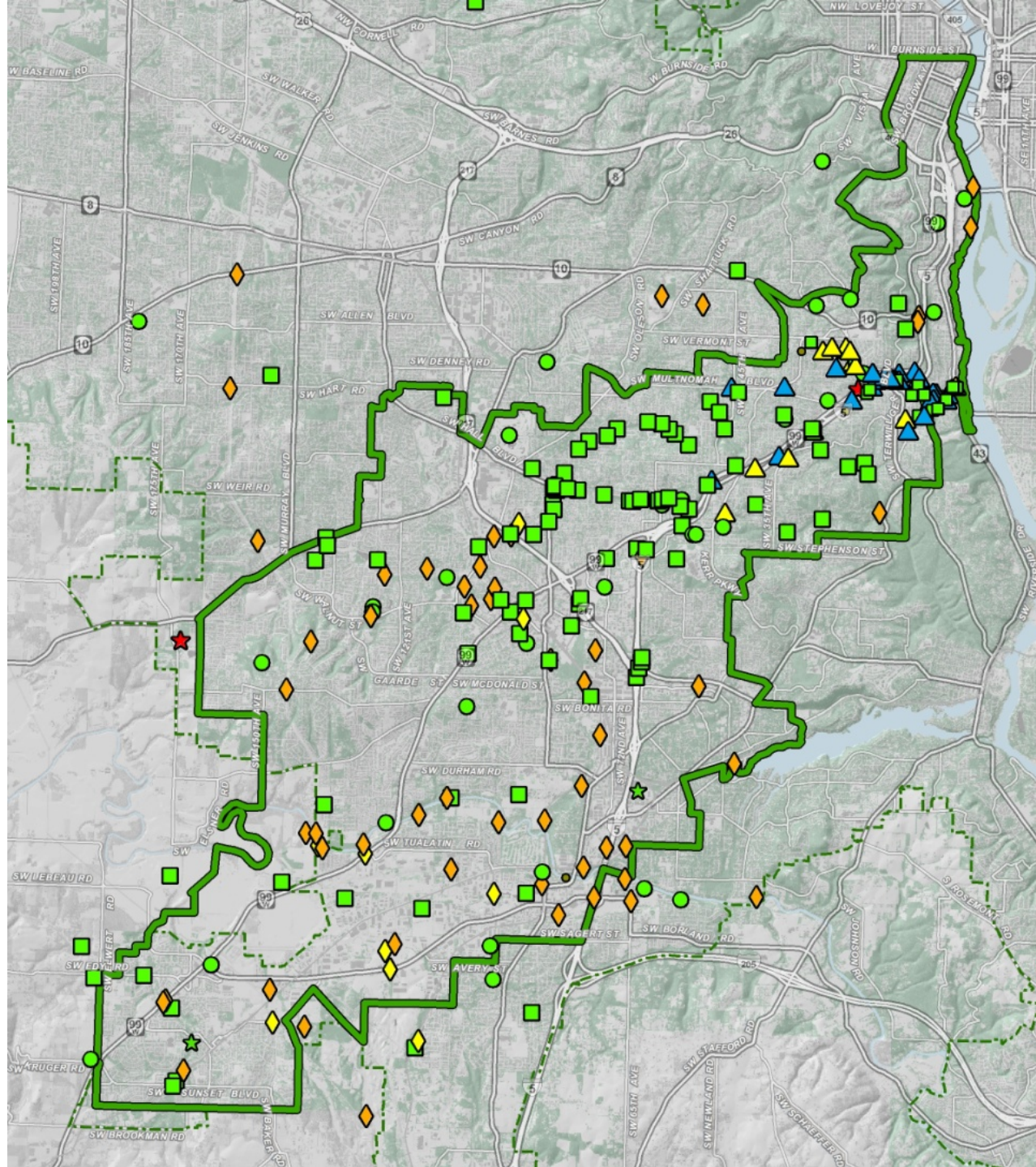
- ♦ **Active transportation:** 300 projects
- ♦ **Parks and natural resources:** 450
- ♦ **Roadway improvements:** 150
- ♦ **Transit projects:** narrowed to 6 concepts



DRAFT 11/26/2012







Shared investment strategies



- Shared investment strategies will be mutually developed to meet the vision and needs of the communities in corridor and will strive to meet a balance of the project goals

Southwest corridor vision

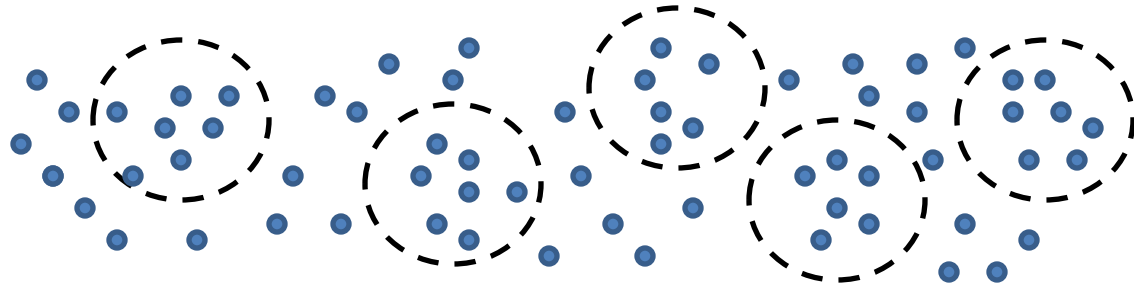
- Support, strengthen and connect livable and prosperous places from Portland to Sherwood
- Provide an open and inclusive community process to select land use and transportation alternatives for implementation.
- Enhance employment, housing choices, the environment, and quality of life
- Use public resources efficiently, thoughtfully and equitably
- Stimulate private and public investment.

Southwest corridor goals

- **Accountability and partnership** – Manage resources responsibly, foster collaborative investments, implement strategies effectively and fairly, and reflect community support.
- **Prosperity** – People can live, work, play and learn in thriving and economically vibrant communities where everyday needs are easily met.
- **Health** – An environment that supports the health of the community and ecosystems.
- **Access and mobility** – People have a safe, efficient and reliable network that enhances economic vitality and quality of life.

Building shared investment strategies

- Community/land use vision
- Choose from project inventories



- Identify regulatory policies or programs

Building shared investment strategies | community vision

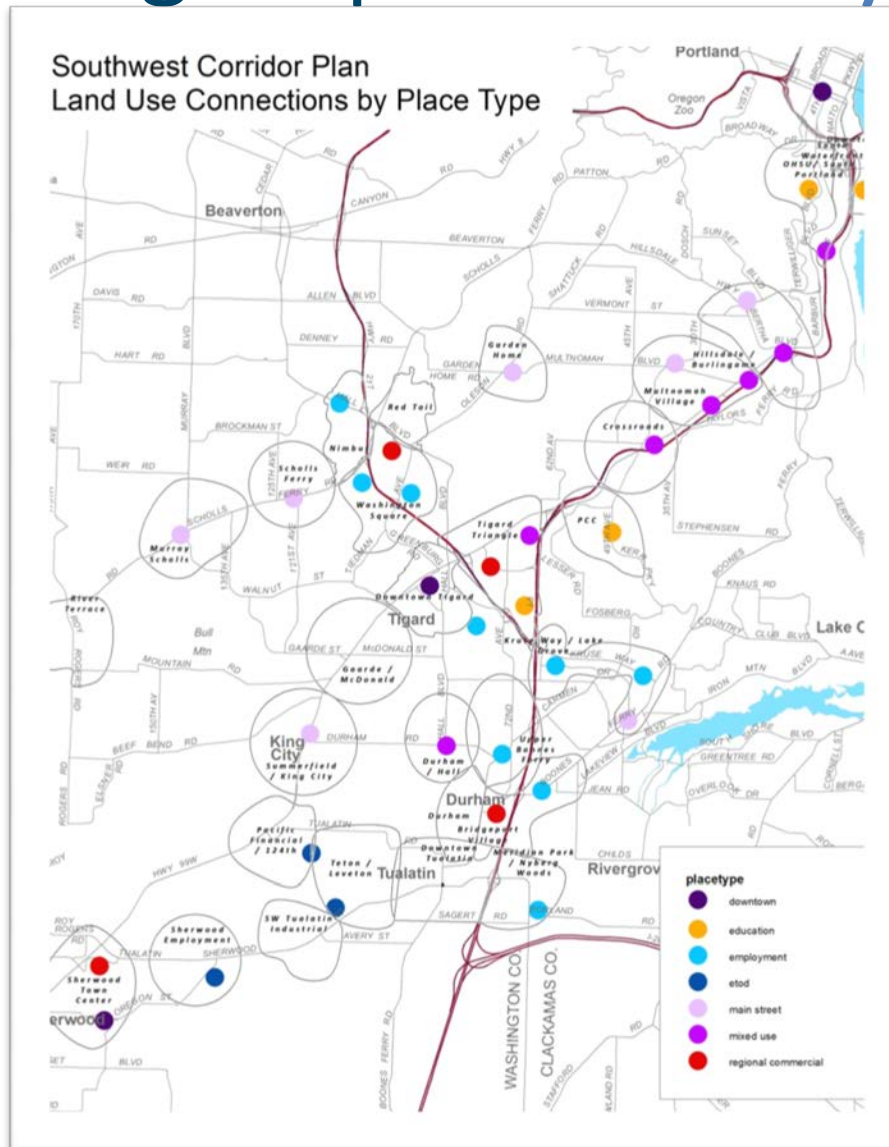
START WITH
THE LAND
USE

TRANSIT
OPTIONS

STATION
AREAS

FOCUS
AREAS

CORRIDOR
NEEDS



Building shared investment strategies | transit options

START WITH
THE LAND
USE

TRANSIT
OPTIONS

STATION
AREAS

FOCUS
AREAS

CORRIDOR
NEEDS



Building shared investment strategies | station areas

START WITH
THE LAND
USE

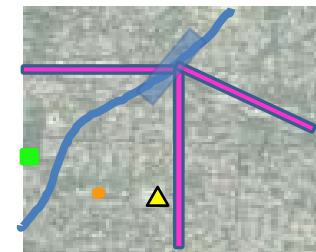
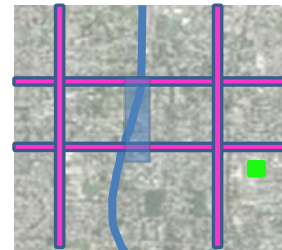
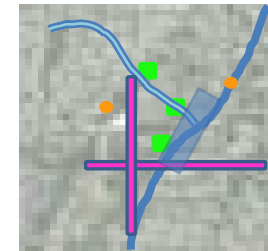
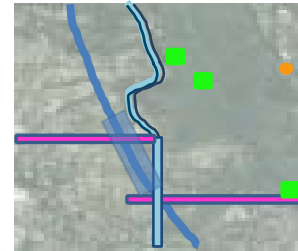
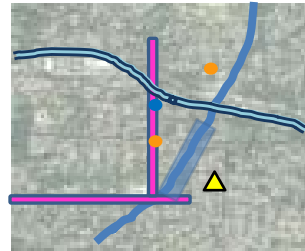
TRANSIT
OPTIONS

STATION
AREAS

FOCUS
AREAS

CORRIDOR
NEEDS

- Support community vision/land use goals
- Support transit options
- Support transit stations



Building shared investment strategies | focus areas

START WITH
THE LAND
USE

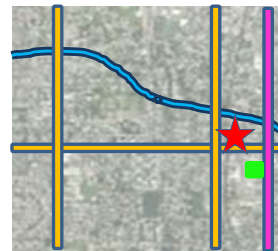
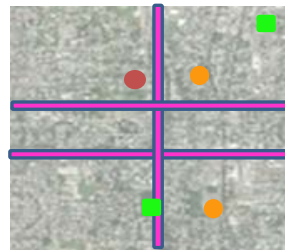
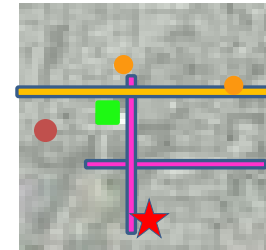
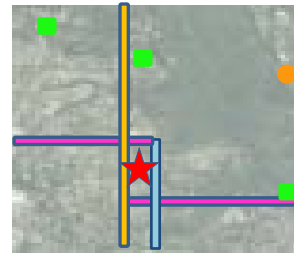
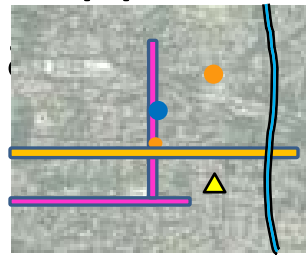
TRANSIT
OPTIONS

STATION
AREAS

FOCUS
AREAS

CORRIDOR
NEEDS

- Support community vision/land use goals
- Support focus areas without transit
- Support connections between focus



Building shared investment strategies | corridor needs

START WITH
THE LAND
USE

TRANSIT
OPTIONS

STATION
AREAS

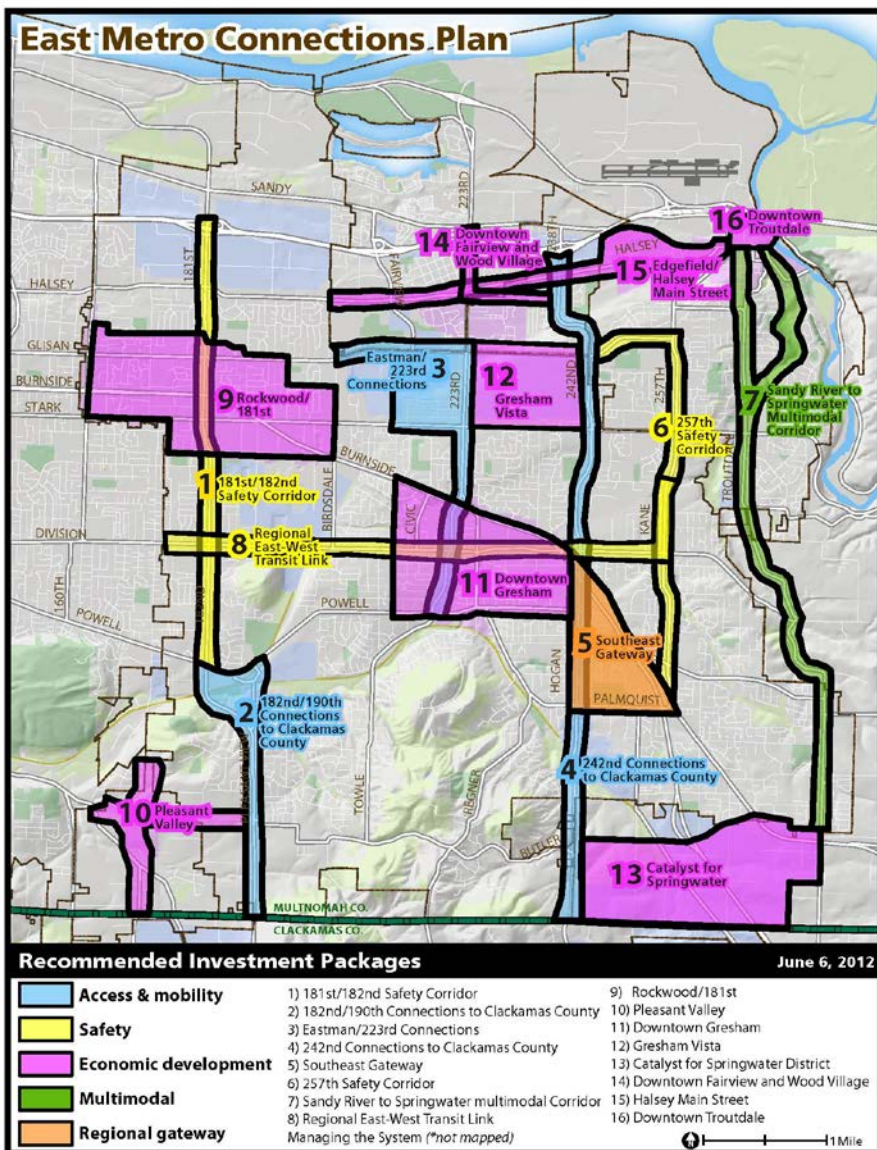
FOCUS
AREAS

CORRIDOR
NEEDS

- Support community vision/land use goals
- Address needs not yet met within the corridor
- Improve the corridor networks
 - ♦ Auto/freight
 - ♦ Bike and pedestrian
 - ♦ Wildlife and streams
 - ♦ Parks

Building shared investment strategies | next steps

- Develop 5 shared investment strategies
- Evaluation
- Compare to “low-build”
- Refine as needed
- Recommend preferred strategies
- Develop implementation strategy



Building shared investment strategies | **action requested**

- Agreement on the approach and methodology for developing the project inventories
- Agreement on the approach to developing the shared investment strategies