

GREAT PLACES
SW Corridor Plan
 Portland • Sherwood • Tigard • Tualatin
 Beaverton • Durham • King City • Lake Oswego
 Multnomah County • Washington County
 ODOT • TriMet • Metro

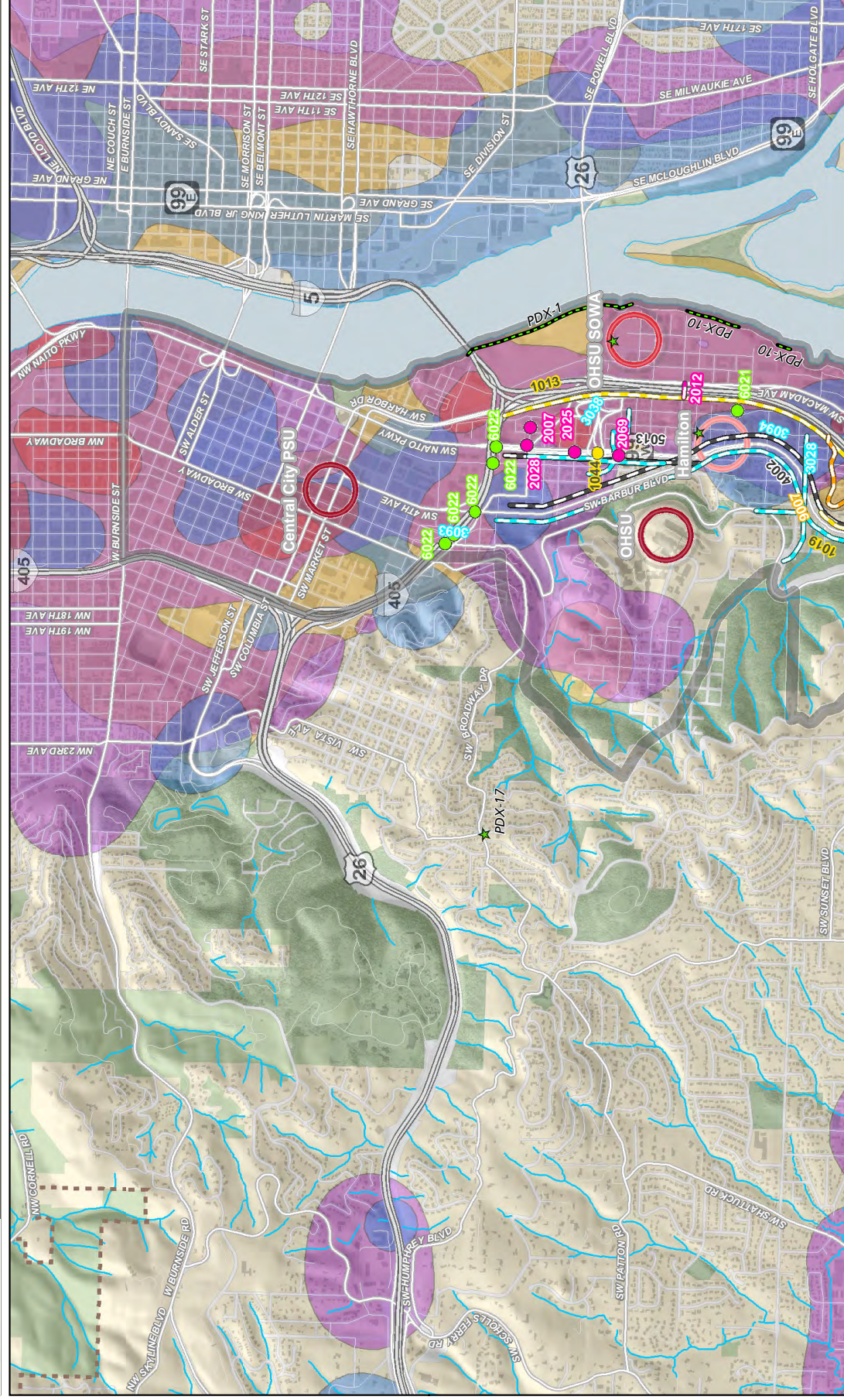
Draft steering committee recommendation | Attachment A
Roadway, active transportation, parks, trails and nature
projects map book and project lists

Southwest Corridor Plan Steering Committee discussion:
 July 8, 2013

Map tiles	2
Roadway and active transportation list	9
Parks, natural areas and environmental restoration list	13
<i>Maps are included for location purposes only.</i>	



Roadway, Active Transportation, and Green Projects – Section 1



Projects by Type

- Bicycle
- Bike/Ped
- AT Trail
- Pedestrian
- Auto/Freight
- Multimodal

Projects by

- Fish Projects
- Natural Resource
- Park/
- Natural Resource
- Stormwater
- Trails

Development Categories

- Commercial/Industrial
- Employment
- Mixed Use
- Higher Intensity Residential

Key Places

- Essential
- Priority
- Opportunity
- Neighborhood

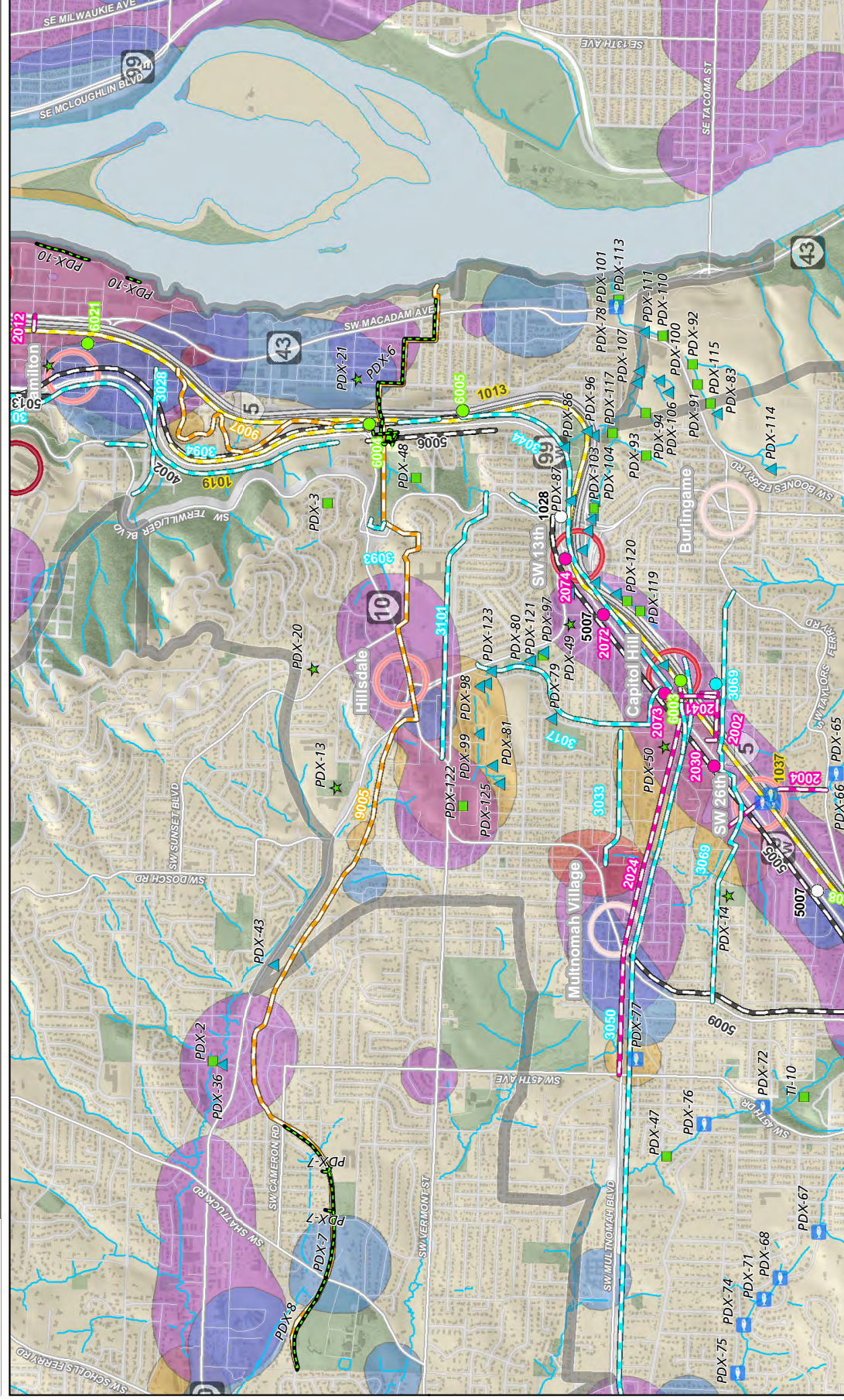
Urban Growth Boundary

- Parks
- SW Corridor

Scale: 0 to 1,000 Feet. Metro, June 24, 2013.



Roadway, Active Transportation, and Green Projects – Section 2



Projects by Type

- Bicycle
- Bike/Ped
- AT Trail
- Pedestrian
- Auto/Freight
- Multimodal

Projects by

- Fish Projects
- Natural Resource
- Park/
- Natural Resource
- Stormwater
- Trails

Development Categories

- Commercial/Industrial
- Employment
- Mixed Use
- Higher Intensity Residential

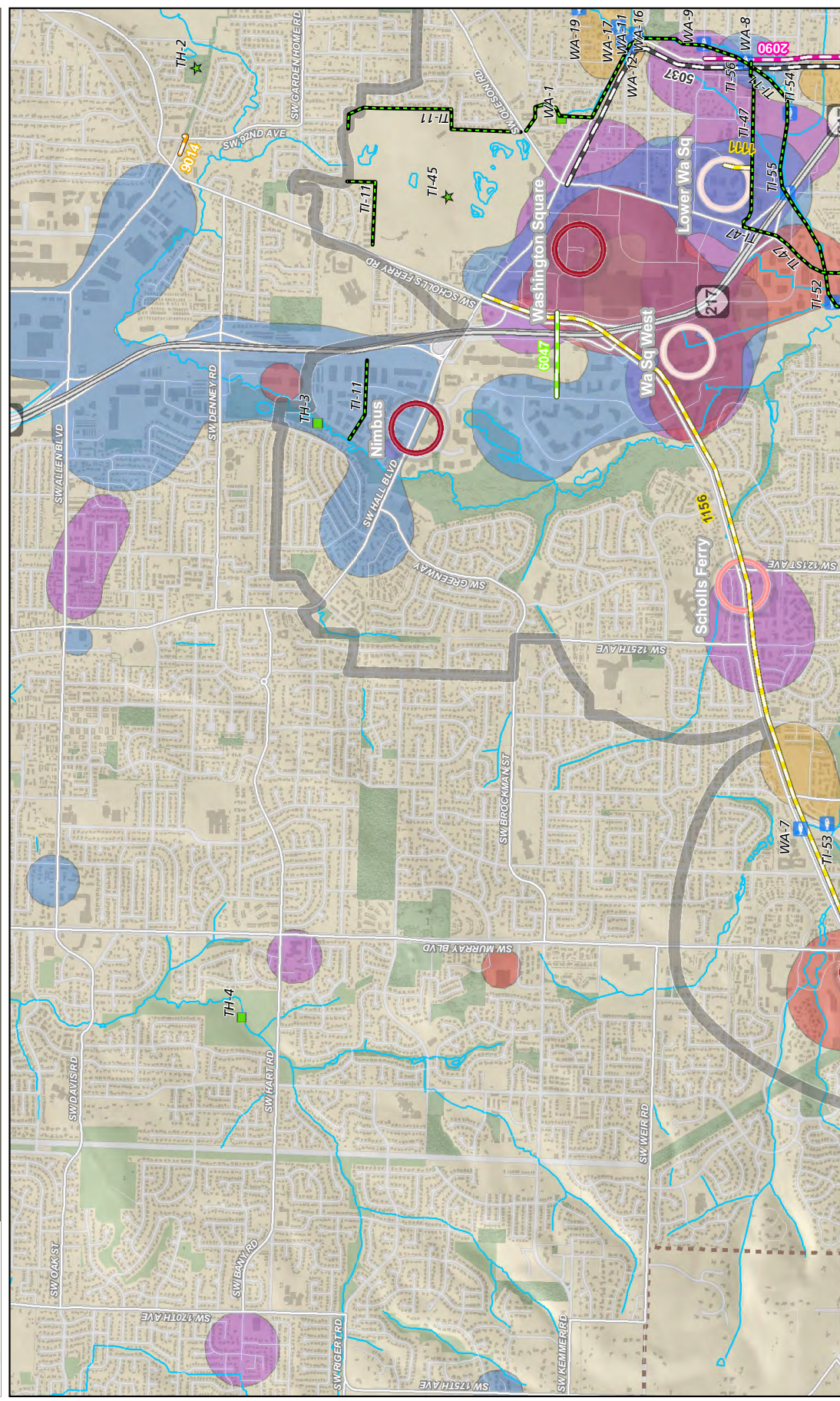
Key Places

- Essential
- Priority
- Opportunity
- Neighborhood

Urban Growth Boundary

- Parks
- SW Corridor

Scale: 0 to 1,000 Feet. Metro, June 24, 2013.



Projects by Type

- Bicycle
- Bike/Ped
- AT Trail
- Pedestrian
- Auto/Freight
- Multimodal

Fish Projects

- Natural Resource
- Park/
- Natural Resource
- Stormwater
- Trails

Development Categories

- Commercial/Industrial
- Employment
- Mixed Use
- Higher Intensity Residential

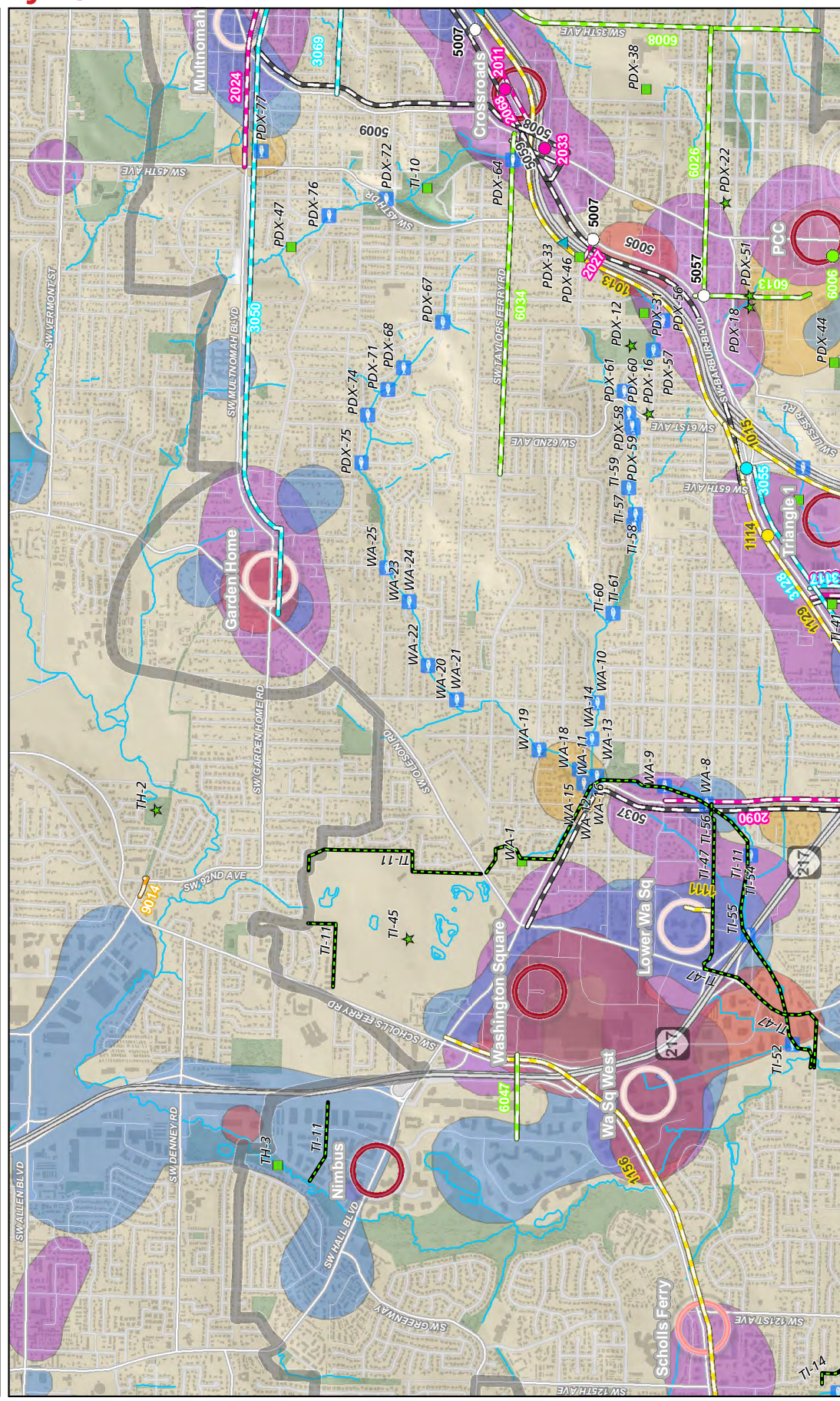
Places Key

- Essential
- Priority
- Opportunity
- Neighborhood

Urban Growth Boundary

- Parks
- SW Corridor

Metro June 24, 2013



Projects by Type

- Bicycle
- Bike/Ped
- AT Trail
- Pedestrian
- Auto/Freight
- Multimodal

Fish Projects

- Natural Resource
- Park/
- Natural Resource
- Stormwater
- Trails

Development Categories

- Commercial/Industrial
- Employment
- Mixed Use
- Higher Intensity Residential

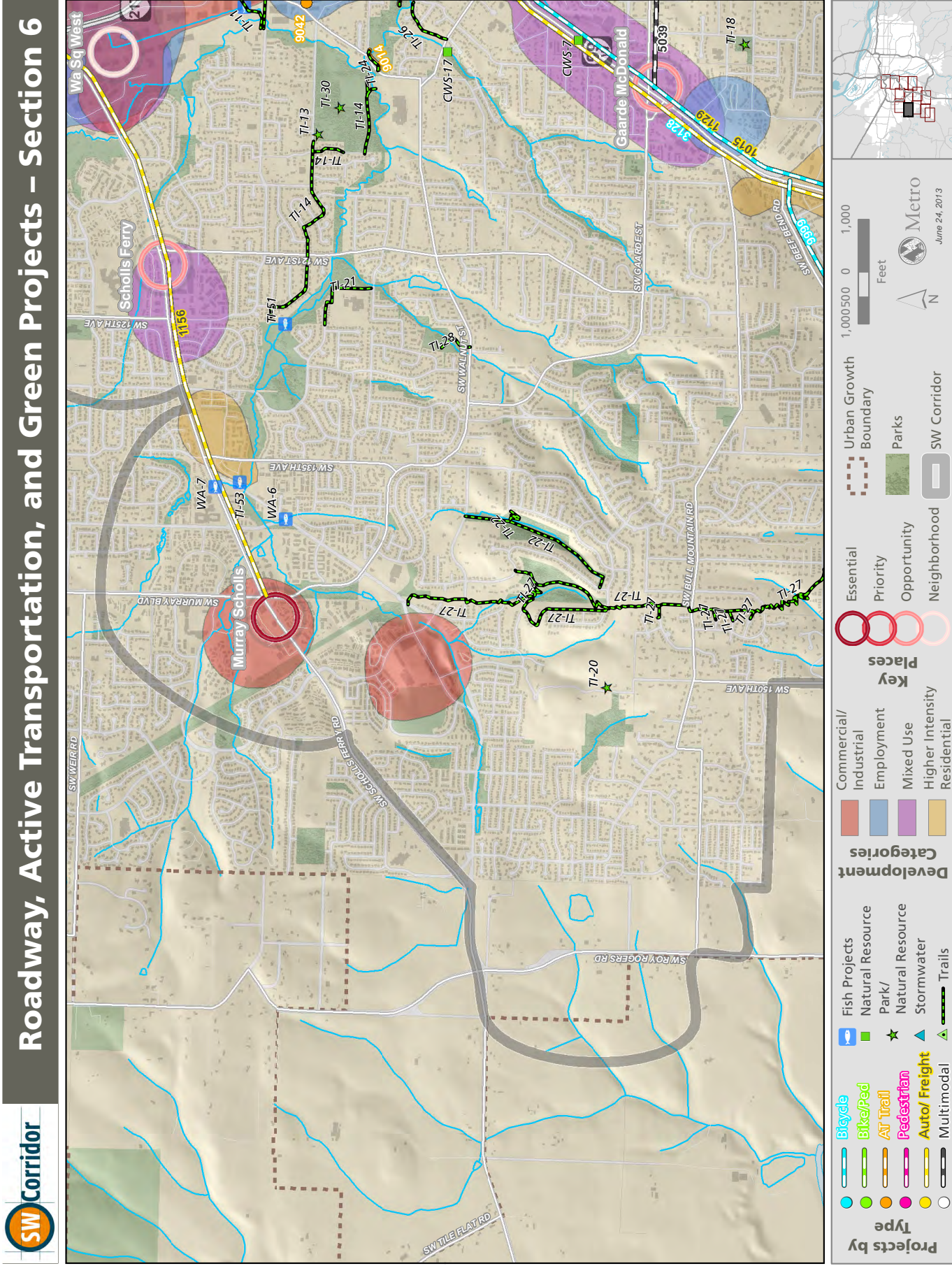
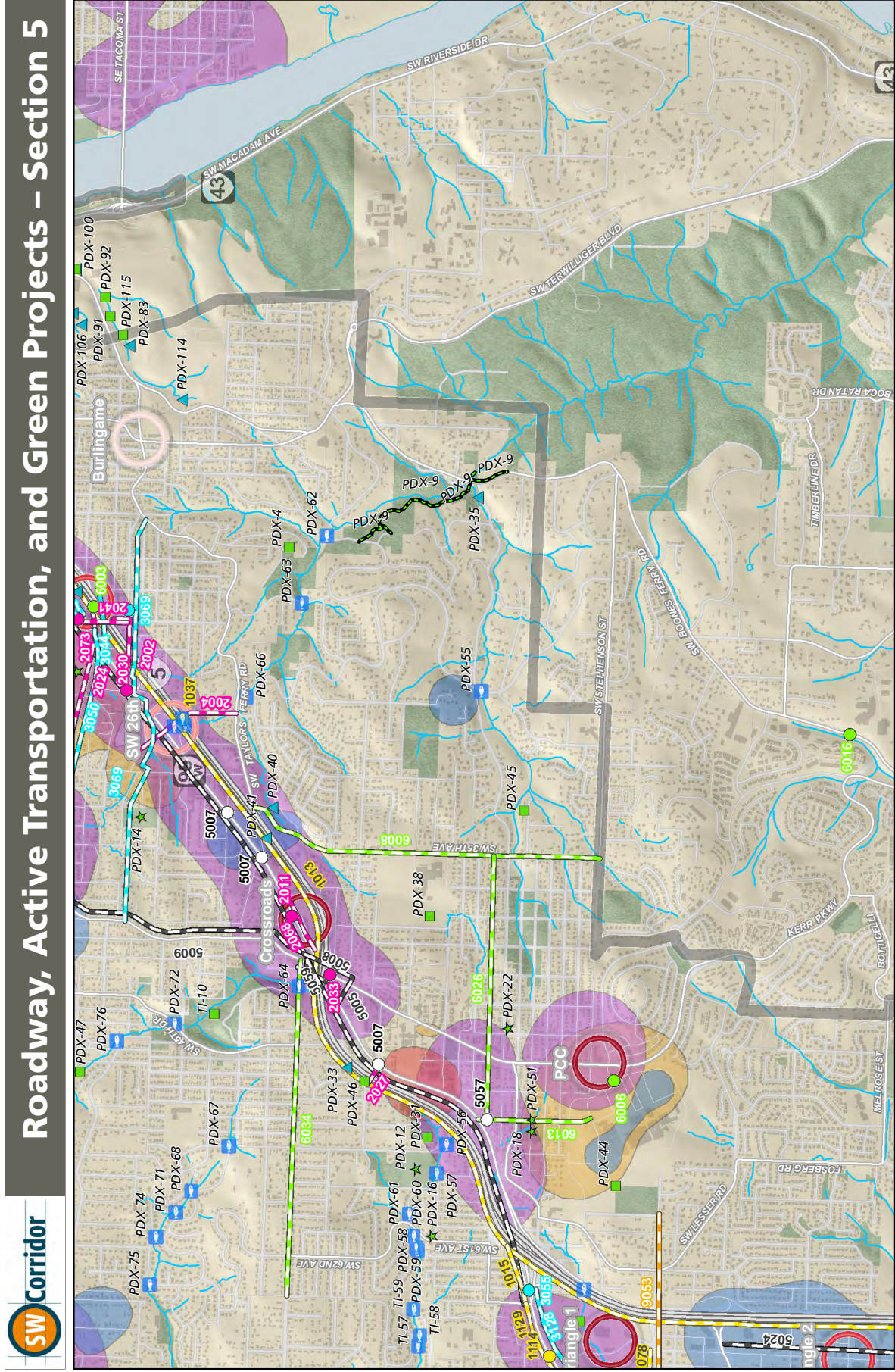
Places Key

- Essential
- Priority
- Opportunity
- Neighborhood

Urban Growth Boundary

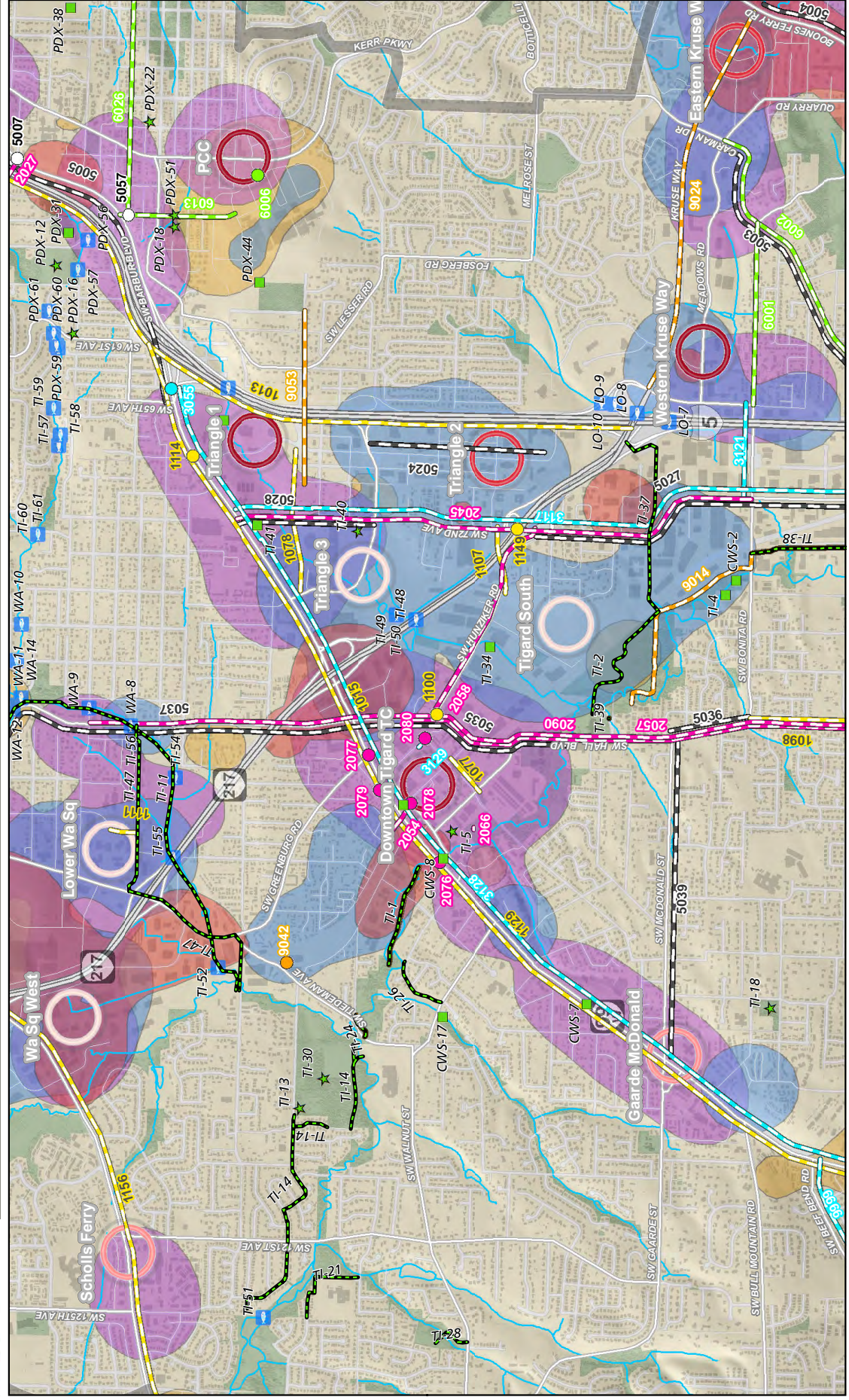
- Parks
- SW Corridor

Metro June 24, 2013





Roadway, Active Transportation, and Green Projects – Section 7



Projects by Type

- Bicycle
- Bike/Ped
- AT Trail
- Pedestrian
- Auto/Freight
- Multimodal

Development Categories

- Commercial/Industrial
- Employment
- Mixed Use
- Higher Intensity Residential

Key Places

- Essential
- Priority
- Opportunity
- Neighborhood

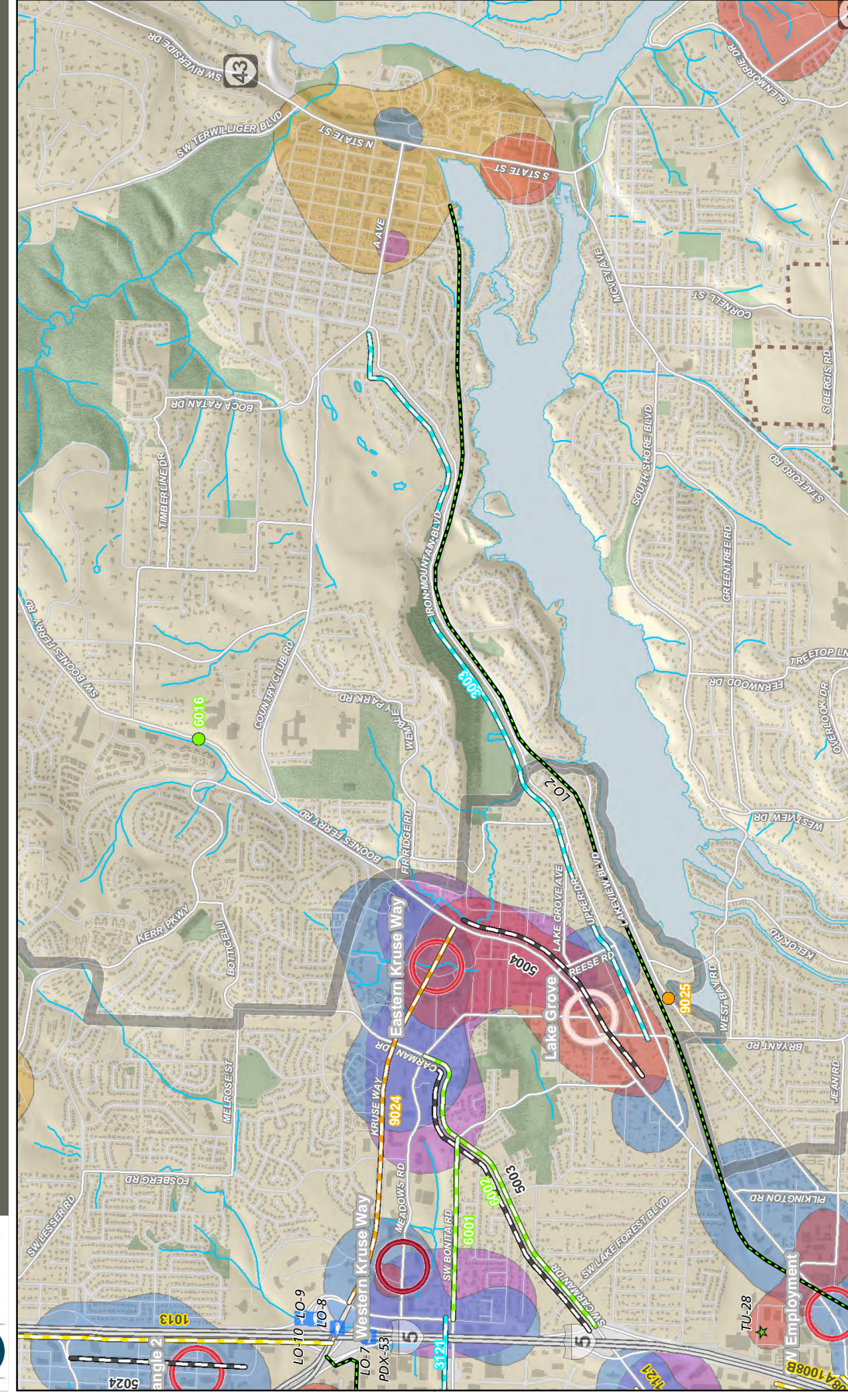
SW Corridor

- Urban Growth Boundary
- Parks

Metro June 24, 2013



Roadway, Active Transportation, and Green Projects – Section 8



Projects by Type

- Fish Projects
- Natural Resource
- Park/Natural Resource
- Stormwater
- Trails

Development Categories

- Commercial/Industrial
- Employment
- Mixed Use
- Higher Intensity Residential

Key Places

- Essential
- Priority
- Opportunity
- Neighborhood

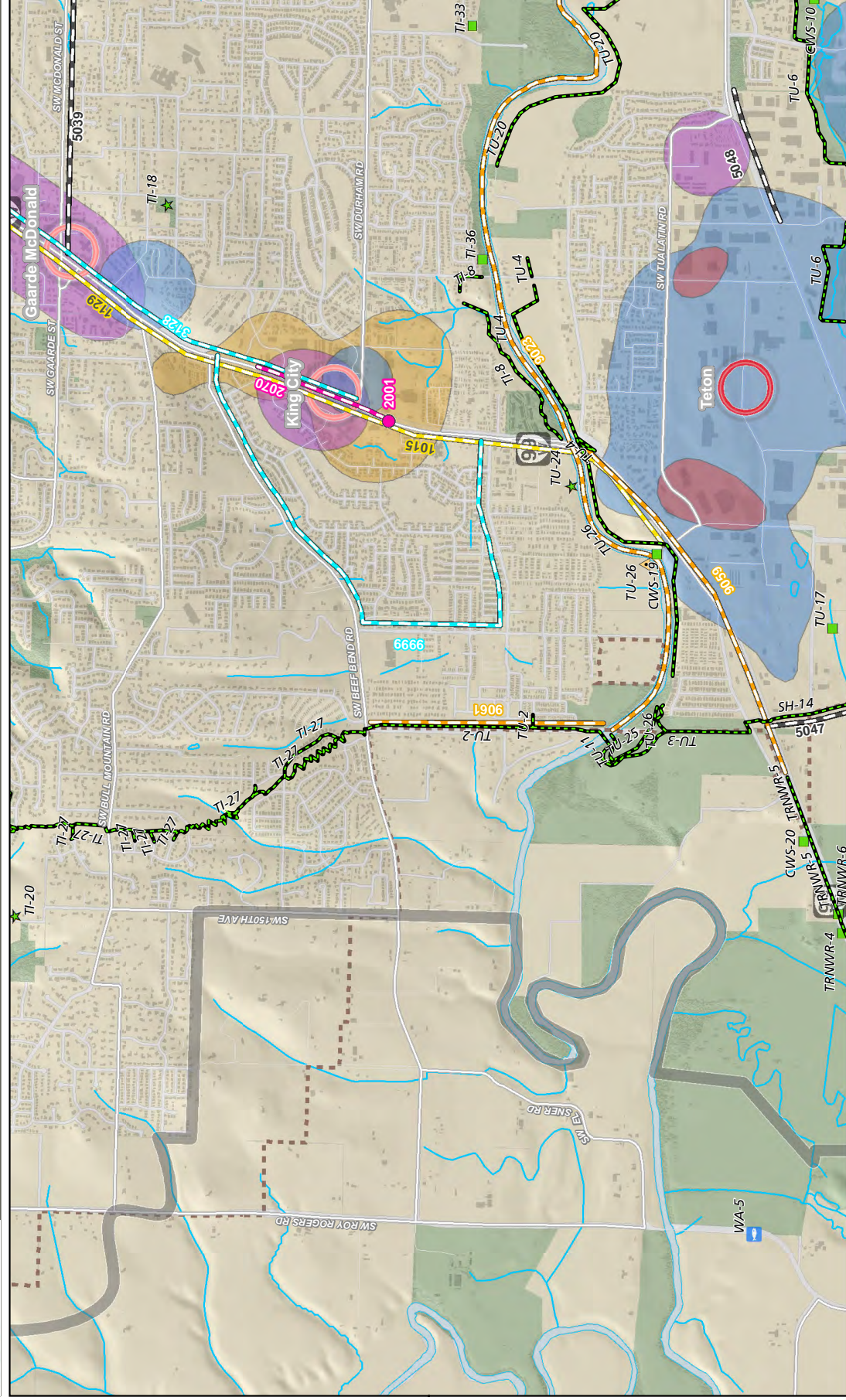
SW Corridor

- Urban Growth Boundary
- Parks

Metro June 24, 2013



Roadway, Active Transportation, and Green Projects – Section 9



Projects by Type

- Bicycle
- Bike/Ped
- AT Trail
- Pedestrian
- Auto/Freight
- Multimodal

Fish Projects

- Natural Resource
- Park/
- Natural Resource
- Stormwater
- Trails

Development Categories

- Commercial/Industrial
- Employment
- Mixed Use
- Higher Intensity Residential

Key Places

- Essential
- Priority
- Opportunity
- Neighborhood
- SW Corridor

Urban Growth Boundary

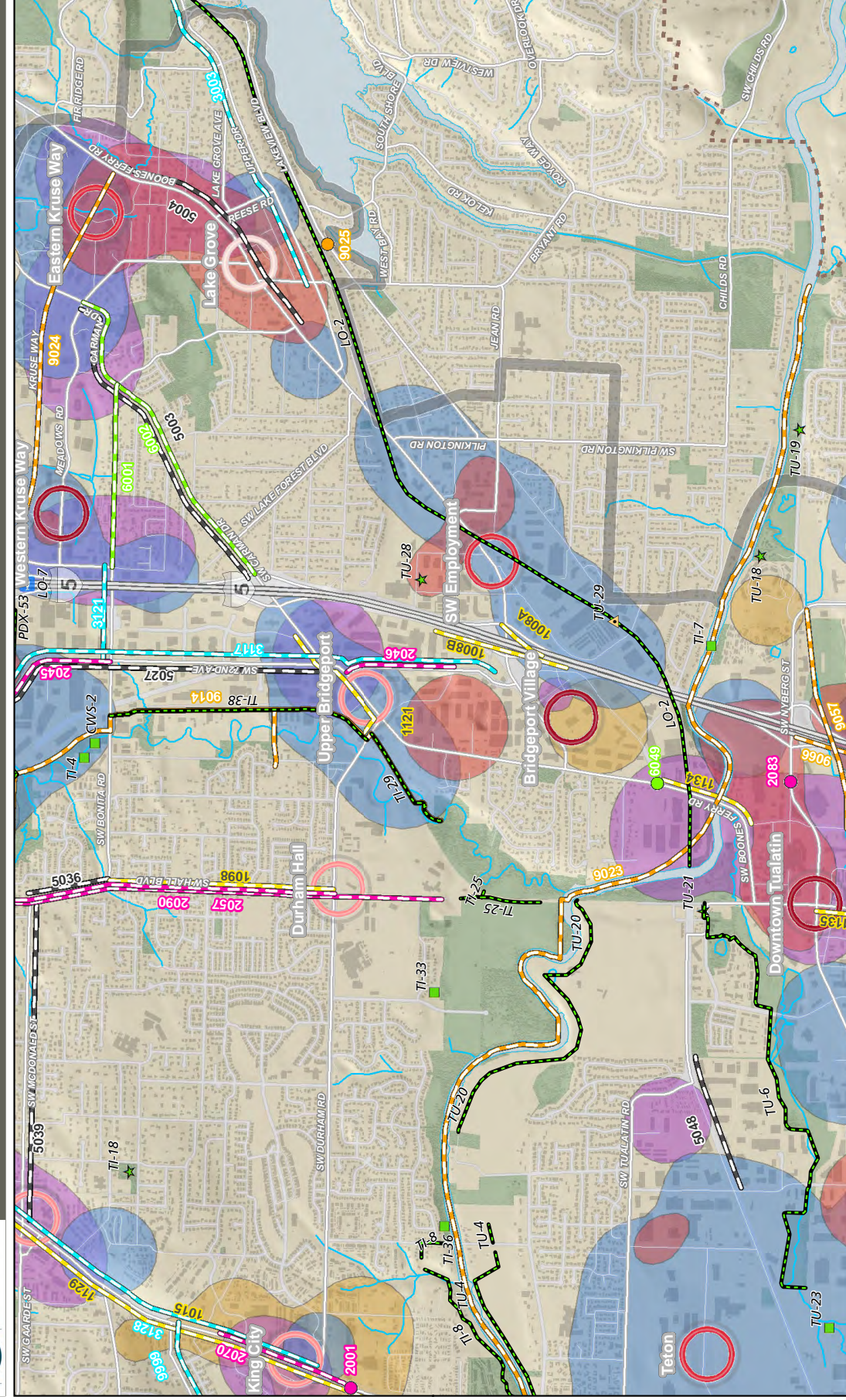
Parks

Scale: 1,000 500 0 500 1,000 Feet

Metrol
June 24, 2013



Roadway, Active Transportation, and Green Projects – Section 10



Projects by Type

- Bicycle
- Bike/Ped
- AT Trail
- Pedestrian
- Auto/Freight
- Multimodal

Fish Projects

- Natural Resource
- Park/
- Natural Resource
- Stormwater
- Trails

Development Categories

- Commercial/Industrial
- Employment
- Mixed Use
- Higher Intensity Residential

Key Places

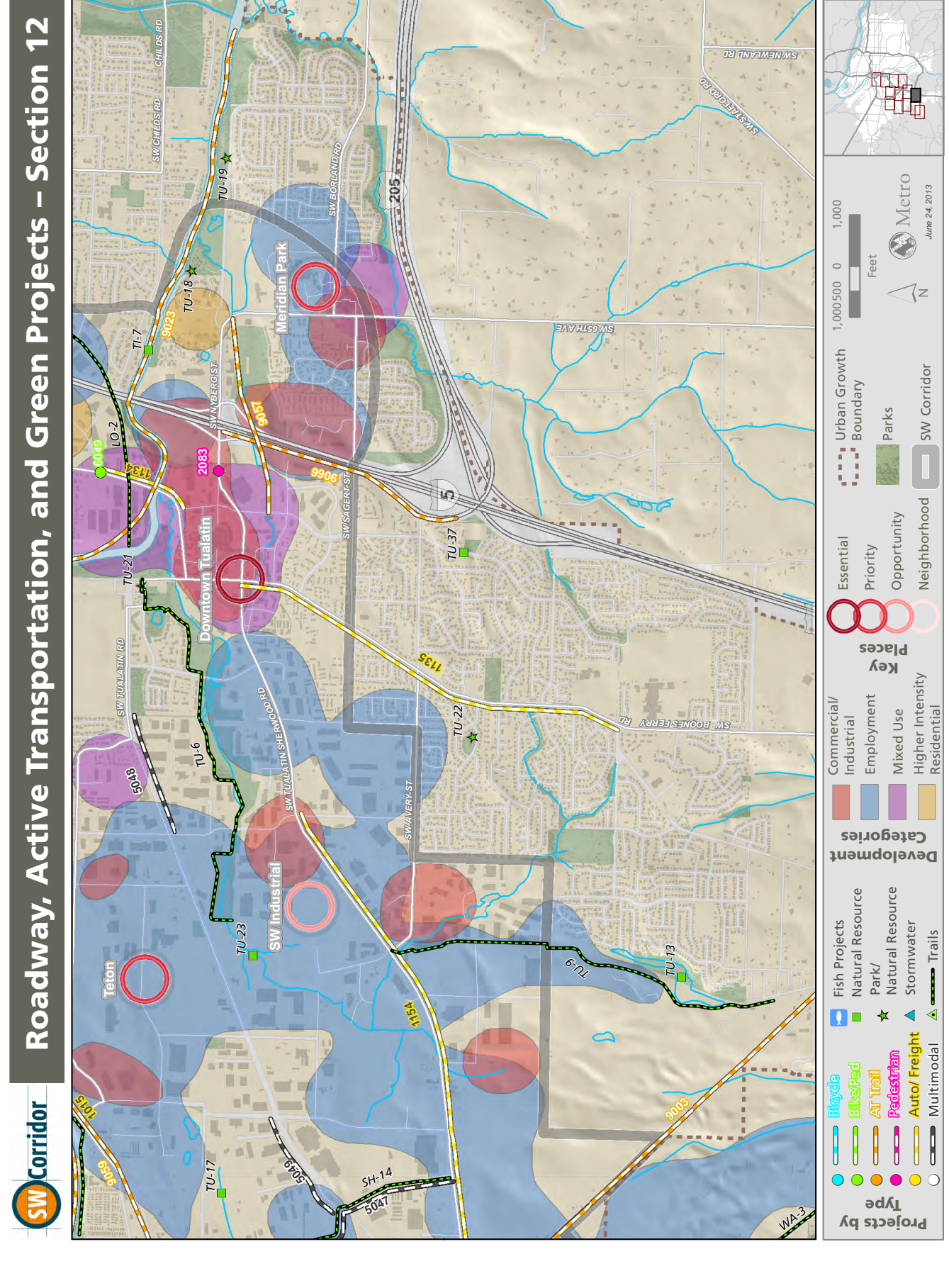
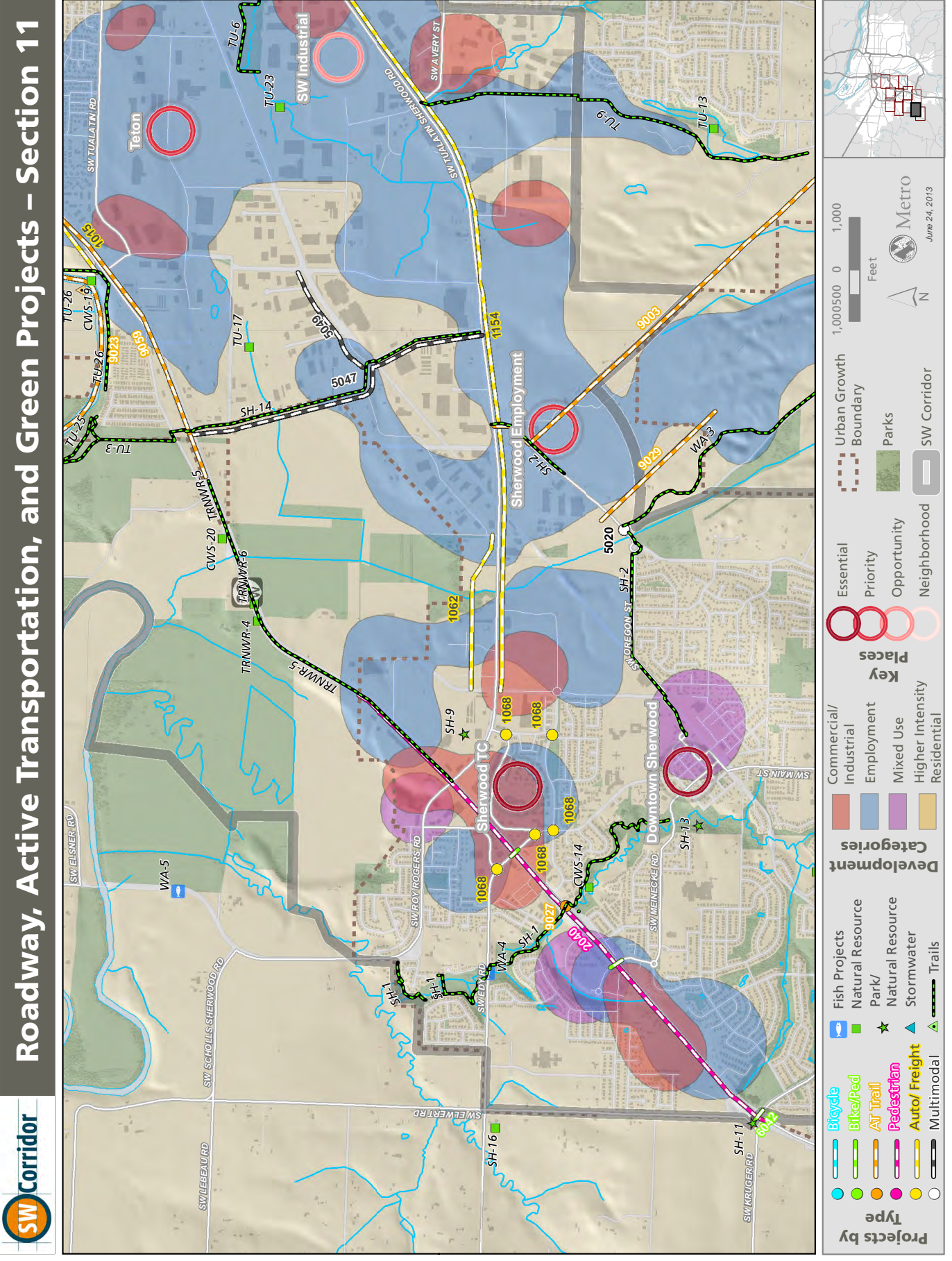
- Essential
- Priority
- Opportunity
- Neighborhood
- SW Corridor

Urban Growth Boundary

Parks

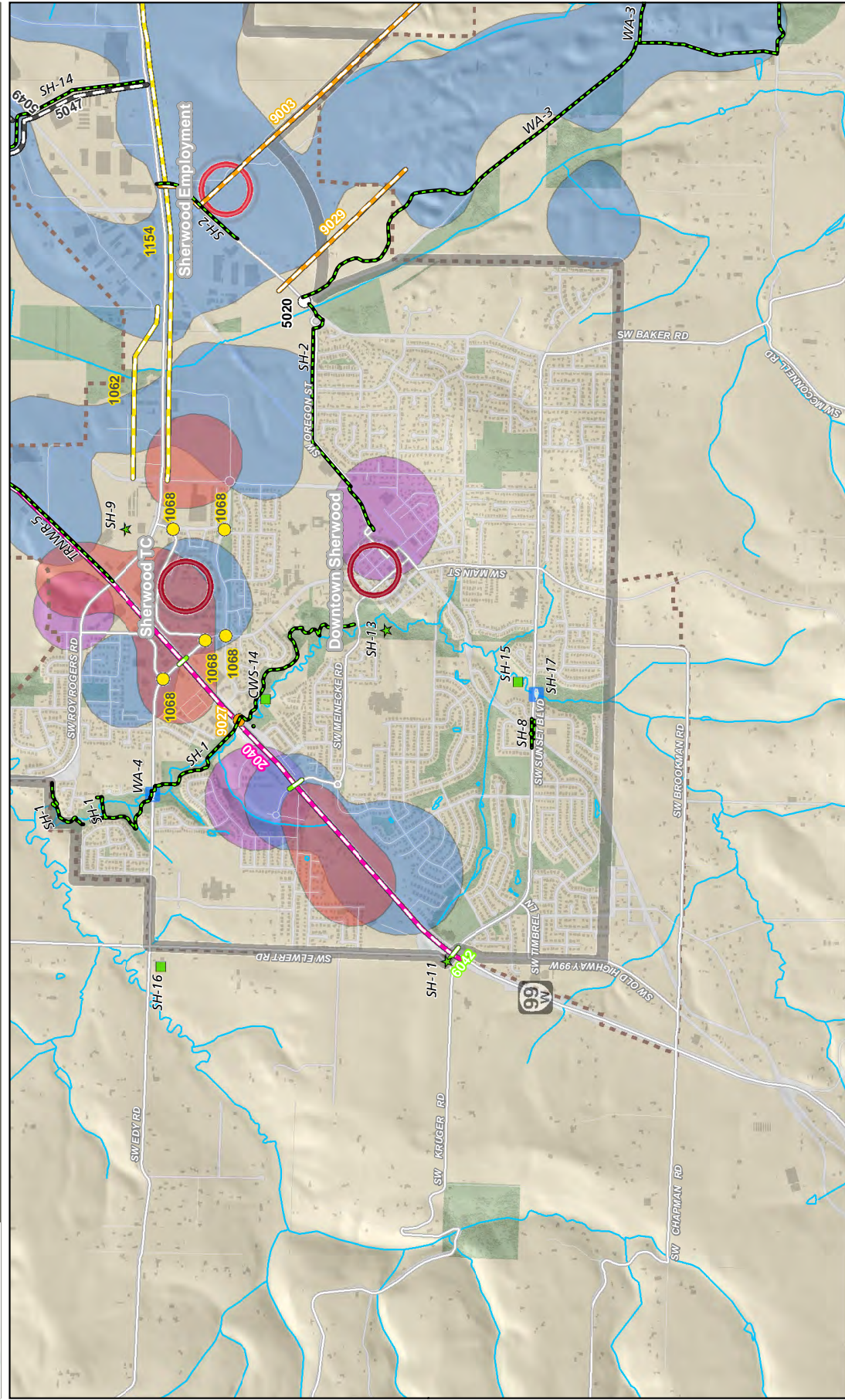
Scale: 1,000 500 0 500 1,000 Feet

Metrol
June 24, 2013





Roadway, Active Transportation, and Green Projects – Section 13



Projects by Type

- Bicycle
- Bike/Ped
- AV Trail
- Pedestrian
- Auto/ Freight
- Multimodal

Development Categories

- Commercial/Industrial
- Employment
- Mixed Use
- Higher Intensity Residential

Key Places

- Essential
- Priority
- Opportunity
- Neighborhood

Development

- Fish Projects
- Natural Resource Park/Natural Resource
- Stormwater
- Trails

SW Corridor

- Urban Growth Boundary
- Parks
- SW Corridor

Scale: 0 to 1,000 Feet
 Metro
 June 24, 2013

CRITERIA FOR PROJECT SELECTION

Highly supportive of high capacity transit

Critical

- Does it create or improve ped access on a connection HCT will use?
- Does it help people safely access a station by walking or bicycling within 1/4 mile or a trail within 1 mile?

High

- Does it help people safely access a station by walking or bicycling within 1/4 - 1/2 mile or a trail within 2 miles?

Medium

- Does it help people safely access a station by walking or bicycling within 1/2 - 1 mile or a trail within 3 miles?
- Does it improve local transit service accessing the HCT?
- Does it improve road connections to an end-of-line park and ride?

Low

- None of the above, or covered by another project

Highly supportive of the land use vision in essential or priority places

- Is the project in an essential/priority place?
- Is the project supportive of the local land use vision for the place?
- Does the project support land use by providing safe crossings or pedestrian/bicycle connections (active transportation)?

DRAFT STEERING COMMITTEE RECOMMENDATION

Southwest Corridor: Roadway and Active Transportation Projects - 6/21/13



Location/ Ownership	#	Project Title	Project Description	Cost	Highly supportive of HCT	Highly supportive of land use goals, esntl/prty places
Portland ODOT	1044	South Portland Circulation and Connectivity (Ross Island Bridge ramp connections)	Adds a new ramp connection between I-405 and the Ross Island Bridge from Kelly Avenue. Restore at-grade intersections along Naito Parkway, with new signalized intersections at Ross Island Bridge access and at Hooker Street. Removes several roadways and ramp connections.	\$\$\$\$	5	all other
Tigard	1077	Ash Avenue railroad crossing (new roadway)	Extend Ash Avenue across the railroad tracks from Burnham to Commercial Street.	\$		
Tigard	1078	Atlanta Street Extension (new roadway)	Extend Atlanta Street west to Dartmouth Street	\$		
Tigard WashCo.	1098	Hall Boulevard Widening, Bonita Road to Durham	Widen to 3 lanes; build sidewalks and bike lanes; safety improvements (construct 3 lanes with development, preserve ROW for 5 lanes)	\$	4	all other
Tigard WashCo.	1100	Hall/Hunziker/Scoffins Intersection Realignment	Realign offset intersection to cross intersection to alleviate congestion and safety issues	\$		
Tigard WashCo.	1107	Hwy. 217 Over-crossing - Hunziker Hampton Connection	Build new connection of Hunziker Road to 72nd Avenue at Hampton St., requires over-crossing over Hwy 217, removes or revises existing 72nd Avenue/Hunziker intersection/connection.	\$\$\$\$		Not E/P place
Tualatin WashCo.	1134	Boones Ferry Road (reconstruct/widen from Martinazzi to Lower Boones Ferry)	Reconstruction/widen to 5 lanes from Martinazzi to Lower Boones Ferry Road, including bridge.	\$\$\$	1	
Portland	2004	26th Ave, SW (Spring Garden - Taylors Ferry): Pedestrian Improvements	Construct a walkway for pedestrian travel and access to transit and install street lighting	¢		
Portland ODOT	2011	Connections to Transit/Transit Improvements: Barbur & Taylors Ferry	New steps/ramp connecting SW Taylors Ferry frontage road to Barbur across from transit center at existing signalized crossing.	¢		
Portland ODOT	2018	Huber Street Sidewalk Project 37th Ave. -43rd Ave./I-5 On-Ramp	Construct new concrete sidewalks, curbs, and curb ramps on south side of SW Huber Street from 37th Ave. to 43rd Ave.	¢		
Portland ODOT	2027	Pedestrian Overpass near Markham School	Construct pedestrian path and bridge over Barbur Blvd. and I-5 to connect SW Alfred and SW 52nd to the rear of Markham School.	\$\$		
Portland	2041	SW 19th Ave sidewalks: Barbur - Spring Garden	Construct new sidewalks where none exist (DA)	¢		
Tigard	2045	72nd Avenue sidewalks: 99W to Bonita	Complete gaps in sidewalk on both sides of street from Highway 99W to Bonita Road	\$	3	all other
Tigard	2046	72nd Avenue sidewalks: Upper Boones Ferry to Durham	Install sidewalk on both sides of street from Upper Boones Ferry Road to Durham Road	\$	1	
Tigard	2054	Commercial Street sidewalks: Main to Lincoln	Install sidewalks on both sides of the street from Main Street to Lincoln Street	¢		
Tigard	2057	Hall Boulevard sidewalks: Hunziker to city limits	Complete gaps in sidewalk on alternating sides of street from Hunziker Street to the South City Limits.	\$	4	all other
Tigard	2058	Hunziker Street Sidewalks: 72nd to Hall	Install sidewalk on both sides of the street from 72nd Avenue to Hall Boulevard	\$		
Tigard ODOT	2066	Tigard Town Center (Downtown) Pedestrian Improvements	Improve sidewalks, lighting, crossings, bus shelters and benches throughout the downtown including: Highway 99W, Hall Blvd, Main Street, Hunziker, Walnut and neighborhood streets.	\$		
Tigard ODOT	2076	Tigard Transit Center 99W sidewalk infill.	Build sidewalks that are at least 10 ft. wide along SW Pacific Hwy (99W), where there are none, and widen existing sidewalk corridors all along 99W, so there is landscaped buffer between pedestrians and the motor vehicles.	¢		
Tigard ODOT	2077	Tigard Transit Center crossing improvements.	Shorten crossing distances, make crosswalks more visible, and provide more time for pedestrians to cross at the intersections of 99W and SW Greenburg Rd., 99W & SW Hall Blvd., and 99W & SW Dartmouth St.	\$		
Tigard	2078	Tigard Transit Center Park & Ride pedestrian path.	Provide a designated pedestrian path through the transit center park and ride lot, connecting to SW Main St.	¢		

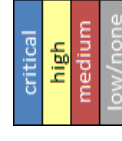
Footnotes:

1 - HCT to Tualatin only; 2 - HCT to Sherwood only; 3 - 72nd HCT alignment only; 4 - Hall HCT alignment only; 5 - Naito HCT alignment only; 6 - Barbur/53rd station only

Estimated Cost Magnitudes: ¢ - up to \$500,000; \$ - up to \$5 Million; \$\$ - up to \$10 Million; \$\$\$ - up to \$20 Million; \$\$\$\$ - More than \$20 Million

DRAFT STEERING COMMITTEE RECOMMENDATION (continued)

Southwest Corridor: Roadway and Active Transportation Projects - 7/1/13



Location/ Ownership	#	Project Title	Project Description	Cost	Highly supportive of HCT	Highly supportive of land use goals, esntl/prty places
Tigard	2079	Tigard Transit Center pedestrian path	Formalize the informal path running from Center Street Connection from SW Commercial St. to SW Hall Blvd., by paving it, making it ADA accessible, providing lighting, and wayfinding signage.	¢		
Tigard	2080	Tigard Transit Center sidewalk infill.	Build sidewalks, where there are none, along SW Scoffins St. & SW Ash St. These streets are near the Tigard Transit Center and provide access to it. Ensure there is a landscaped buffer between pedestrians and motor vehicles.	¢		
Tigard	2090	Hall Blvd sidewalks: Locust to Hunziker	Locust St to Durham Rd- pedestrian infill (Note: to be consistent with SW project list this should be Locust to Hunziker)	\$	4	all other
Portland	2999	Pedestrian connection from Barbur to Tenwilliger at Gibbs	Construct a new pedestrian walkway under the tram within the Gibbs right-of-way through the Tenwilliger Parkway. The steep grade and forested area will require lighting and stairs.	\$		
Portland	3017	Capitol Hill Rd bikeway -from SW Barbur Blvd to SW Bertha Blvd.	Multiple bicycle facility types: bicycle boulevard or enhanced shared roadway (Barbur - Troy; 21st - Custer); bicycle boulevard or advisory bike lane (Troy - 21st); enhanced shared roadway (Custer - Bertha)	¢		
Portland	3028	Inner Hamilton bikeway -from SW Tenwilliger Blvd to SW Corbett Ave.	Enhanced shared roadway. Includes connection to Terwilliger on SW Hamilton Terrace	¢		
Portland	3033	Inner Troy bikeway -from SW Capitol Hwy to SW Capitol Hill Rd.	Bike boulevard from SW Capitol Hwy to SW Capitol Hill Rd	¢		
Portland	3038	Lower SW 1st bikeway -from SW Barbur Blvd to SW Arthur St.	Multiple bicycle facility types: separated in-roadway (Corbett: Gibbs - Grover); bicycle boulevard (all other segments). Includes connection to SW Kelly Ave on SW Grover St and SW Corbett Ave	¢		
Portland ODOT	3044	Middle Barbur bikeway -from SW 23rd Ave to SW Capitol Hwy-Barbur Blvd Ramp.	Separated bicycle route in-roadway. Listed as a Regional Bicycle Parkway in the Regional Active Transportation Plan (5/9/13).	\$		
Portland	3069	Spring Garden, SW (Taylors Ferry - Capitol Hwy): Bikeway	Provide bike lanes on existing street	\$		
Portland	3093	Tenwilliger bikeway gaps	Separated bicycle route in-roadway. Eliminate key gaps in the Terwilliger Blvd bikeway	¢		
Portland	3101	Vermont-Chestnut bikeway -from SW Capitol Hwy to SW Terwilliger Blvd.	Bicycle boulevard	¢		
Tigard Tualatin	3117	72nd Avenue bikeway: 99W to city limits	Install bike facilities on both sides of the street from Highway 99W to South City Limits	\$	3	all other
Tigard Oswego	3121	Bonita Road bike lanes: 72nd to I-5	Install bike lanes in eastbound direction from 72nd Avenue to I-5 Bridge	¢	1	
Tigard ODOT	3128	Pacific Hwy-99W Bike Lanes in Tigard	Fill in gaps in bike lanes along Pacific Hwy-99W within the Tigard city limits. Listed as a Regional Bicycle Parkway in the Regional Active Transportation Plan (5/9/13).	¢		
Tigard	3129	Tigard Transit Center Bicycle Hub	Provide bicycle hub at Tigard Transit Center	¢		
Portland ODOT	4002	Barbur Blvd, SW (3rd - Terwilliger): Multi-modal improvements	Construct improvements for transit, bikes and pedestrians. Transit improvements include preferential signals, pullouts, shelters, left turn lanes, sidewalks, and crossing improvements.	\$\$		
Portland ODOT	5005	Barbur Blvd, SW (Terwilliger - City Limits): Multi-modal Improvements	Complete boulevard design improvements including sidewalks and street trees, safe pedestrian crossings, enhance transit access and stop locations, and bike lanes (Terwilliger - SW 64th or Portland City Limits).	\$\$\$\$		
Portland	5009	Capitol Hwy improvements (replace roadway and add sidewalks)	Improve SW Capitol Highway from SW Multnomah Boulevard to SW Taylors Ferry Road per the Capitol Highway Plan. Replace Existing Roadway and add sidewalks, bike lanes and green stormwater features.	\$\$\$		
Portland ODOT	5013	Naito/South Portland Improvements (left turn pockets with bike/ped and remove tunnel, ramps and viaduct)	Reconstruct Naito Pkwy as two-lane road w/bike lanes, sidewalks, left turn pockets, & on-street parking. Remove grade separation along Naito at Barbur Blvd. (tunnel), the Ross Island Bridge, Arthur/Kelly (viaduct), and the Grover pedestrian bridge.	\$\$\$\$	5	all other
Tigard	5024	68th Avenue (widen to 3 lanes)	Widen to 3 lanes or for transitway including sidewalks and bike lanes between Dartmouth/I-5 Ramps and south end	\$\$\$		
Tigard WashCo. ODOT	5035	Hall Boulevard Widening, Highway 99W to Fanno Creek	Widen to 3 lanes plus on-street parking (or potential 5 lanes); build sidewalks and bike lanes; safety improvements	\$	4	all other
Tigard WashCo.	5036	Hall Boulevard Widening, McDonald Street to Fanno Creek including creek bridge	Widen to 3 lanes; preserve ROW for 5 lanes; build sidewalks and bike lanes; safety improvements	\$\$\$	4	all other
Portland	5057	SW 53rd and Pomona (improves safety of ped/bike users)	Reconfigure and improve intersection to manage traffic turning speeds, and improve safety of ped/bike users between Barbur and Pomona.	¢	6	all other
Portland ODOT	5059	SW Portland/ Crossroads Multimodal Project (roadway realignments and modifications to Barbur Blvd., Capitol Hwy., and the I-5 southbound on-ramp)	Implement Barbur Concept Plan walk audit recommendations in the SW Portland TC, including modifications to Barbur Blvd., Capitol Hwy., and the I-5 southbound on-ramp to support safer and more efficient operation for all modes. Project specifics include intersection types and roadway realignments to be refined.	\$\$\$\$		
Lake Oswego	6001	Bonita Rd. sidewalks and bike lanes - Carman Dr. to Bangy Rd.	Sidewalks and bike lanes: supplement to Tigard project #3121 which continues to 72nd.	¢	1	
Portland	6003	Multnomah viaduct bicycle and pedestrian facilities	Construct new bicycle and pedestrian facilities at/parallel to Multnomah St. viaduct	\$		
Portland	6013	Barbur/PCC ped/bike Connection	Neighborhood greenway connection between Barbur and PCC via SW 53rd.	¢	6	all other
Portland	6021	Hood Avenue Pedestrian Improvements (Lane to Macadam)	Install sidewalk with barrier along east side and pedestrian crossing at Lane Street.	\$		
Portland ODOT	6022	I-405 Bike/Ped Crossing Improvements	Improve opportunities for bicycles and pedestrians to cross over/under I-405 on Harbor Drive, Naito Parkway, 1st, 4th, 5th, 6th and Broadway.	\$		
Portland	6026	Pomona St: Bicycle and Ped improvements (35th to Barbur)	provide bike lanes and sidewalks	\$		

Footnotes:

1 - HCT to Tualatin only; 2 - HCT to Sherwood only; 3 - 72nd HCT alignment only; 4 - Hall HCT alignment only; 5 - Naito HCT alignment only; 6 - Barbur/53rd station only
Estimated Cost Magnitudes: ¢ - up to \$500,000; \$ - up to \$5 Million; \$\$ - up to \$10 Million; \$\$\$ - up to \$20 Million; \$\$\$\$ - More than \$20 Million

DRAFT STEERING COMMITTEE RECOMMENDATION (continued)

Southwest Corridor: Roadway and Active Transportation Projects - 7/1/13



Highly supportive of land use goals, esnt/prty places

Location/ Ownership	#	Project Title	Project Description	Cost	Highly supportive of HCT	Highly supportive of land use goals, esnt/prty places
Portland	6034	Taylor's Ferry, SW (Capitol Hwy - City Limits): Bicycle & Pedestrian Improvements	SW Taylor's Ferry Rd: Provide bicycle lanes, including shoulder widening and drainage, and construct sidewalks for access to transit.	\$		
Durham	6049	Boones Ferry Sidewalks	Improve sidewalks and bicycle lane at Boones Ferry to Lower Boones Ferry	¢	1	
Portland	9005	Red Electric Trail: Fanno Creek Trail to Willamette Park	Provide east-west route for pedestrians and cyclists in SW Portland that connects and extends the existing Fanno Creek Greenway Trail to Willamette Park. Listed as a Regional Bicycle Parkway and Regional Pedestrian Parkway in the Regional Active Transportation Plan (5/9/13).	\$\$\$		
Portland	9007	Slavin Road to Red Electric Trail: Barbur to Corbett	Build Multi use trail on Slavin Road from Barbur to Corbett. The Red Electric Trail is listed as a Regional Bicycle Parkway and Regional Pedestrian Parkway in the Regional Active Transportation Plan (5/9/13).	\$		
Tigard	9014	Fanno Creek Trail - Tualatin River to Tigard St.	Complete gaps along the Fanno Creek multiuse path from the Tualatin River to Tigard Library and from Pacific Hwy-99W to Tigard Street. Listed as a Regional Bicycle Parkway and Regional Pedestrian Parkway in the Regional Active Transportation Plan (5/9/13).	\$		
Tigard Tualatin	9023	Tualatin River Pathway	Develop a continuous multi-use pathway along the Tualatin River from Boones Ferry Road under I-5 to the Tualatin River Greenway and Browns Ferry Park. Listed as a Regional Bicycle Parkway and Regional Pedestrian Parkway in the Regional Active Transportation Plan (5/9/13).	\$\$	1	
Portland Tigard	9053	Ped/Bike Connection between Tigard Triangle and PCC-Sylvania	Provide pedestrian/bicycle connection between the Tigard Triangle area and PCC-Sylvania	\$		
Tualatin	9057	Nyberg Creek Greenway	Connecting east and west of I5 then north and south to Hwy 99 to I5 bikeway (south) and Tualatin River Greenway (north)	\$	1	
Tualatin ODOT	9066	North/South I-5 Parallel Path in Tualatin	Ped/bike pathway	\$\$	1	

DISCUSSION DRAFT, July 1, 2013

Portland ODOT	1019	Barbur Lane Diet - Capitol to Hamilton (reduce northbound lanes from three to two with multi-modal improvements)	Reduce number of northbound lanes from three to two from Capitol Hwy (north) to 1/4 mile south of Hamilton to reduce speeds and improve safety, improve ped/bike crossing safety and add protected bike lanes	¢		
Sherwood	1062	Arrow Street (Herman Road) - Build 3 lanes with sidewalks and bike lanes	Construct new road to collector standards. Build new 3 lane roadway with stream crossing and with bike lanes and sidewalks from Langer Farms Parkway Phase 2 to Gerda Lane/Galbreath Drive.	\$\$	2	all other
Sherwood	1068	Town Center Signal & Intersection Improvements (Downtown Sherwood)	Improve 3-leg intersection at Edy & Borchers; remove traffic signal at Baler; on Sherwood Blvd. remove traffic signal at Langer and disallow left turns from Langer to Sherwood, and add traffic signal at Century Dr.	\$		
Tigard ODOT	1129	Highway 99W access management in Tigard	Implement access management strategies and median projects, including additional pedestrian crossing locations, in Hwy 99W Plan.	\$\$		
Tualatin Sherwood WashCo.	1154	Tualatin-Sherwood Rd. (Langer Parkway to Teton Ave.) - Widening to 5 lanes with ped./bike	Widen from 3 to 5 lanes with bike lanes and sidewalks from Langer Parkway to Teton Ave.	\$\$\$\$	all other	2
King City ODOT	2001	King City Town Center Pedestrian Improvements	Improve sidewalks, lighting, bus shelters and benches, and pedestrian crossings for Highway 99W.	\$		
Tigard King City ODOT	2070	99W pedestrian improvements to serve King City transit stops	Provide pedestrian access and crossing opportunities at transit stops on 99W in the vicinity of Royalty Parkway and Durham Rd in King City.	¢		
Lake Oswego	5004	Boones Ferry Road Boulevard improvements (turn lanes with bike/ped. - Madrona to Kruse Way)	Widen to include bike lanes, sidewalks, and turn lanes. This project is Phase 2, Oakridge/Reese to Kruse Way. Phase 1 (\$23 Million) is in Low Build.	\$\$		
Portland ODOT	5006	Barbur Lane Diet: Terwilliger to Capitol	Reduce number of northbound travel lanes on Barbur from Terwilliger to Capitol Highway (north) from two to one to reduce speed and improve safety. Adds bike lanes over Newberry and Vermont bridges.	¢		
Sherwood Tigard WashCo. ODOT	5020 5037	Oregon-Tonquin Intersection & Street Improvements Hall Boulevard Widening, Oleson to 99W	Intersection improvements (consider roundabout) on Oregon at Tonquin Road; sidewalks and bike access through the intersection. Widen to 3 lanes; build sidewalks and bike lanes; safety improvements	\$ \$		
Tualatin WashCo.	5047	Cipole Rd. (widen to 3 lanes with ped./bike)	Reconstruct/widen to 3 lanes from 99W to Tualatin-Sherwood Road with sidewalks and bike lanes.	\$\$\$	2	all other
Tualatin	5048	Herman (multi-modal improvements, Teton to Tualatin Rd.)	Improve to urban standard from Teton to Tualatin.	\$		
Tualatin	5049	Herman (multi-modal improvements, Cipole to 124th)	Reconstruction from Cipole to 124th with sidewalks and bike lanes	\$		
Lake Oswego	6002	Carman Dr. sidewalks and bike lanes	Add bike lanes and pedestrian pathway	\$		
Portland ODOT	6004	Newbury viaduct bicycle and pedestrian facilities	Construct new bicycle and pedestrian facilities at/parallel to Newbury St. viaduct	\$		
Portland ODOT	6005	Vermont viaduct bicycle and pedestrian facilities	Construct new bicycle and pedestrian facilities at/parallel to Vermont St. viaduct	\$\$		
Sherwood ODOT	6042	99W - Sherwood TC Bicycle/Ped. Bridges	Ped/bike under/overcrossings of 99W at Sunset, Meinecke, Edy. Listed as a Regional Bicycle Parkway in the Regional Active Transportation Plan (5/9/13).	\$\$\$	2	all other
Sherwood	9029	Westside Trail segments	Trail opportunities within easements of BPA and PGE for connectivity. Listed as a Regional Bicycle Parkway and Regional Pedestrian Parkway in the Regional Active Transportation Plan (5/9/13).	\$	2	all other
Tualatin	9061	Westside Trail - Tualatin River Bridge	New bike/ped bridge over the Tualatin River. Could be a joint effort with the Willamette River Water consortium. Listed as a Regional Bicycle Parkway in the Regional Active Transportation Plan (5/9/13).	\$\$		

Footnotes:

1 - HCT to Tualatin only; 2 - HCT to Sherwood only; 3 - 72nd HCT alignment only; 4 - Hall HCT alignment only; 5 - Naito HCT alignment only; 6 - Barbur/53rd station only

Estimated Cost Magnitudes: ¢ - up to \$500,000; \$ - up to \$10 Million; \$\$ - up to \$20 Million; \$\$\$ - up to \$50 Million; \$\$\$\$ - More than \$20 Million

DRAFT STEERING COMMITTEE RECOMMENDATION (continued)

Southwest Corridor: Parks, Natural Areas and Environmental Restoration Projects -7/1/13

This is a list of parks, trails and natural resources projects described by staff in each jurisdiction as well as projects located within jurisdictions collected from regional or other plans. The purpose of the list is to serve as a reference document for project coordination and development. **Projects highlighted in green** meet the criteria for proximity to potential transit or key places identified in the Land Use Vision. **Projects highlighted in blue** are the highest priority for the City of Tualatin and the Tualatin River National Wildlife Refuge.

Funding Amount (scale of funding for associated projects): HIGH: 5 million and up, MEDIUM: 1/2 million to 5 million, LOW - Under 1/2 million

Funding Timing: SHORT TERM: 0-5 years, MID TERM: 5-15 years or LONG TERM: Beyond 15 years

Criteria/Identified Needs:

SERVICE NEED: 10-minute walk of a park, trail, or natural area

DEVELOPMENT COMPLEMENT: Parks, trails, and natural resource investments can support higher density housing and provide links to transit and neighborhood services.

LAND ACQUISITION: Assemble and Acquire large parcels - Parks greater than 5 acres are desirable.

CONNECTIVITY: access to nature both along the trails and by connecting parks and natural areas

WATER QUALITY AND QUANTITY

STREAMS AND RIPARIAN HEALTH

WILDLIFE HABITAT

WILDLIFE CROSSING

LOW IMPACT DEVELOPMENT: LID(A)s

URBAN FOREST Canopy – Trees

Project Size: S: SMALL is under an acre, M: MEDIUM is 1 acre to 5 acres, L: LARGE is more than 5 acres

Note 1: **Projects highlighted in turquoise** are representative of a policy for use in the Southwest corridor.

Jurisdiction and project number	Project Title /Location	Project Description	Funding	Funding Timing	Estimated Cost	Recommendation	Jurisdictional Priorities
CITY OF PORTLAND							
PDX-1	Willamette Greenway trail gaps	The goal is to protect fish and wildlife habitat, water quality, scenic resources and improve public access to the river along the greenway from Wilsonville to the Multnomah Channel.	Yes, Limited Metro Bond Funds	MID TERM: 5-15 years	HIGH - 5 million and up	MID TERM: 5-15 years	
PDX - 2	Acquire 56 Acres: Fanno Creek Watershed	Fanno Creek is one of the acquisition targets for Natural Areas in the <i>Park System Development Charge Acquisition & Development Plan</i> for the SW Corridor.	Yes, Limited Metro Bond Funds	MID TERM: 5-15 years	MEDIUM - 1/2 million to 5 million	MID TERM: 5-15 years	
PDX - 3	Acquire 56 Acres: Westside Wildlife Corridor	A westside wildlife corridor is one of the acquisition targets for Natural Areas in the <i>Park System Development Charge Acquisition & Development Plan</i> for the SW Corridor.	Yes, Limited Metro Bond Funds	MID TERM: 5-15 years	MEDIUM - 1/2 million to 5 million	MID TERM: 5-15 years	
PDX - 4	Acquire 84 Acres: Tryon Creek Watershed	Land in the Tryon Creek watershed is one of the acquisition targets for Natural Areas in the <i>Park System Development Charge Acquisition & Development Plan</i> for the SW Corridor.	Limit Metro Bond Funds	MID TERM: 5-15 years	MEDIUM - 1/2 million to 5 million	MID TERM: 5-15 years	
PDX - 5	Red Electric Trail	Implement the 2007 Red Electric Trail Planning Study (Fanno Creek Trail through PDX) by developing a bike/ped crossing at Barbur Blvd to the old SW Slavin Rd. R.O.W.	No	MID TERM: 5-15 years	HIGH - 5 million and up	MID TERM: 5-15 years	
PDX - 6	Red Electric Trail	Implement the 2007 Red Electric Trail Planning Study (Fanno Creek Trail through PDX) by developing a bike friendly connection from Park Hill Dr. to the Willamette Greenway.	No	MID TERM: 5-15 years	HIGH - 5 million and up	MID TERM: 5-15 years	
PDX - 7	Red Electric Trail	Implement the 2007 Red Electric Trail Planning Study (Fanno Creek Trail through PDX) by developing SW Shattuck to SW Cameron section of RE Trail (project is funded for SW 30th to SW Vermont).	Yes	SHORT TERM: 0-5 years; 2013	MEDIUM - 1/2 million to 5 million	SHORT TERM: 0-5 years	
PDX - 8	Red Electric Trail	Implementation of the 2007 Red Electric Trail Planning Study (Fanno Creek Trail through PDX) • Acquire & Develop: Washington County Line to SW Shattuck section of RE Trail	No	MID TERM: 5-15 years	MEDIUM - 1/2 million to 5 million	MID TERM: 5-15 years	
PDX-9	Hillsdale to Lake Oswego Trail	Develop a sustainable trail (soft surface) between Tryon Creek State Natural Area and Marshall Park, and contribute to funded BES culvert replacement project at Boones Ferry Road, Arnold and Tryon Creeks. Make -up short fall to provide for pedestrian passage.	Yes; Partially funded	SHORT TERM: 0-5 years; 2014	MEDIUM - 1/2 million to 5 million	SHORT TERM: 0-5 years	

DRAFT STEERING COMMITTEE RECOMMENDATION (continued)

Southwest Corridor: Parks, Natural Areas and Environmental Restoration Projects -7/1/13

Jurisdiction and project number	Project Title /Location	Project Description	Funding	Funding Timing	Estimated Cost	Recommendation	Jurisdictional Priorities
PDX-10	South Waterfront Greenway Phase I	Create a new high-density urban community while supporting the habitats along the Willamette River. Phase 1 is partially funded for Riverward improvements - additional funding needed to finish project.	Yes; Partially funded	SHORT TERM: 0-5 years; 2012-2013	HIGH - 5 million and up	SHORT TERM: 0-5 years	
PDX-11	City Greenways	Develop city connections, greenways and corridors. A system of habitat connections, neighborhood greenways and civic corridors will weave nature into the city and sustain healthy, resilient neighborhoods, watersheds and Portlanders.	No	MID TERM: 5-15 years	HIGH - 5 million and up	MID TERM: 5-15 years	
PDX-12	Dickinson Park	Implement master plan vision for this underdeveloped PP&R property.	No	MID TERM: 5-15 years	MEDIUM - 1/2 million to 5 million	MID TERM: 5-15 years	
PDX-13	Hillisdale Park	Implement master plan vision for this underdeveloped PP&R property.	No	MID TERM: 5-15 years	MEDIUM - 1/2 million to 5 million	MID TERM: 5-15 years	
PDX-14	Spring Garden Park	Implement master plan vision for this underdeveloped PP&R property.	No	MID TERM: 5-15 years	MEDIUM - 1/2 million to 5 million	MID TERM: 5-15 years	
PDX-15	Heritage Tree Park	Focus on undeveloped PP&R properties in need of Master Plans and development.	No	MID TERM: 5-15 years	MEDIUM - 1/2 million to 5 million	MID TERM: 5-15 years	
PDX-16	SW Dickinson & 62nd	Focus on undeveloped PP&R properties in need of Master Plans and development.	No	MID TERM: 5-15 years	MEDIUM - 1/2 million to 5 million	MID TERM: 5-15 years	
PDX-17	SW Talbot Property	Focus on undeveloped PP&R properties in need of Master Plans and development.	No	MID TERM: 5-15 years	MEDIUM - 1/2 million to 5 million	MID TERM: 5-15 years	
PDX-18	Sylvania Park	Focus on undeveloped PP&R properties in need of Master Plans and development.	No	MID TERM: 5-15 years	MEDIUM - 1/2 million to 5 million	MID TERM: 5-15 years	
PDX-19	Acquire & Develop 4 acres: So. Waterfront	Implement parks targets for acquisition and development in the Park System Development Charge Acquisition & Development Plan (park deficient areas) for the SW Corridor.	No	MID TERM: 5-15 years	HIGH - 5 million and up	MID TERM: 5-15 years	
PDX-20	Acquire & Develop 4 acres: Hillisdale	Implement parks targets for acquisition and development in the Park System Development Charge Acquisition & Development Plan (park deficient areas) for the SW Corridor.	No	MID TERM: 5-15 years	MEDIUM - 1/2 million to 5 million	MID TERM: 5-15 years	
PDX-21	Acquire & Develop 2 acres: John's Landing:	Implement parks targets for acquisition and development in the Park System Development Charge Acquisition & Development Plan (park deficient areas) for the SW Corridor.	No	MID TERM: 5-15 years	MEDIUM - 1/2 million to 5 million	MID TERM: 5-15 years	
PDX-22	Acquire & Develop 10 acres: Southwest - largest gap in service	Implement parks targets for acquisition and development in the Park System Development Charge Acquisition & Development Plan (park deficient areas) for the SW Corridor.	No	MID TERM: 5-15 years	MEDIUM - 1/2 million to 5 million	MID TERM: 5-15 years	
PDX-23	Watershed Health	Implement Watershed Health Strategy to Reduce impervious surfaces and retrofit impervious surfaces to reduce impacts.	Partial	Ongoing	MEDIUM - 1/2 million to 5 million	Policy	

DRAFT STEERING COMMITTEE RECOMMENDATION (continued)

Southwest Corridor: Parks, Natural Areas and Environmental Restoration Projects -7/1/13

DISCUSSION DRAFT, July 1, 2013

Jurisdiction and project number	Project Title /Location	Project Description	Funding	Funding Timing	Estimated Cost	Recommendation	Jurisdictional Priorities
PDX-24	Watershed Health	Implement Watershed Health Strategy to manage all stormwater runoff from new development and redevelopment in accordance with the requirements of the Stormwater Management	Partial	Ongoing	MEDIUM - 1/2 million to 5 million	Ongoing	
PDX-25	Watershed Health	Watershed Health Strategy - Assess, repair and/or replace existing stormwater outfalls along Barbur Boulevard as needed. In particular, outfall repairs and/or replacements should be designed so as not to cause erosion and degradation of receiving streams.	No	MID TERM: 5-15 years	MEDIUM - 1/2 million to 5 million	Ongoing	
PDX-26	Watershed Health	Watershed Health Strategy - Restore stream functions and stability in planning areas when possible.	Partial	Ongoing	MEDIUM - 1/2 million to 5 million	Ongoing	
PDX-27	Watershed Health	Watershed Health Strategy - Restore habitat connectivity through revegetation, land acquisition, stream daylighting, culvert replacement, and other methods when possible.	Partial	Ongoing	MEDIUM - 1/2 million to 5 million	Ongoing	
PDX-28	Watershed Health	Watershed Health Strategy - Increase canopy and other vegetative cover and improve the quality and composition of vegetation including street trees.	Partial	Ongoing	MEDIUM - 1/2 million to 5 million	Ongoing	
PDX-29	Watershed Health	Watershed Health Strategy - Protect sites and features with high watershed value. This could include acquisition, easements, or other methods	Partial	Ongoing	MEDIUM - 1/2 million to 5 million	Ongoing	
PDX-31	S. Ash Creek Stream Enhancement	Design is underway for this stream and sewer protection project in the Fanno Creek natural area in the Tryon Creek watershed. The project will stabilize the channel, protect the sewer pipe where it crosses the stream, and improve water quality. Construction is planned in summer 2014	Yes	SHORT TERM: 0-5 years	MEDIUM - 1/2 million to 5 million	MID TERM: 5-15 years	1
PDX-33	Tryon Creek Trunk Sewer Repair Projects	The Tryon Creek Trunk Sewer is a 30-inch, above-ground pipe that carries sewer from parts of southwest Portland and Lake Oswego to the City of Portland's Tryon Creek Wastewater Treatment Plant in Lake Oswego. BES is planning repairs, including seismic upgrade, to a portion of the 50-year old pipe between Tryon Creek State Natural Area to the Lake Oswego treatment plant. Project design began in early 2013 and	Yes	SHORT TERM: 0-5 years	MEDIUM - 1/2 million to 5 million	MID TERM: 5-15 years	1
PDX-35	Boones Ferry Culvert Replacement	The culvert in Tryon Creek under Boones Ferry Road is a fish passage barrier. BES is planning to replace the culvert to enable fish passage, increase hydraulic capacity, and improve in-stream habitat. Project design will begin in spring 2013 and will take about two years. Construction is planned in 2015 or 2016.	Yes	SHORT TERM: 0-5 years; 2012-2013	MEDIUM - 1/2 million to 5 million	SHORT TERM: 0-5 years	1
PDX-36	Fanno SW 45th Avenue Culvert Replacement CIP #86	The culvert in Fanno Creek under SW 45th Avenue is undersized and is a passage barrier for native resident fish. BES is planning to replace the culvert to improve conveyance capacity, enable fish passage, and improve localized aquatic habitat. Project design will begin in summer 2013 and is expected to take about two years. Construction is planned in 2015 or 2016.	Yes	SHORT TERM: 0-5 years	MEDIUM - 1/2 million to 5 million	SHORT TERM: 0-5 years	1
PDX-37	Tryon I-5 at SW 26th WQ Facility CIP #8679	In partnership with the Oregon Department of Transportation (ODOT), BES is now designing three stormwater management facilities that will be located on ODOT right-of-way between I-5 and SW Barbur Boulevard at SW 26th. The facilities will detain and treat stormwater runoff from I-5, Barbur Blvd., and nearby residential and commercial areas. Design will be completed in 2013. Construction is planned in 2014.	Yes	SHORT TERM: 0-5 years	MEDIUM - 1/2 million to 5 million	SHORT TERM: 0-5 years	1
PDX-38	Jackson MS Stream Daylighting & Stormwater Retro CIP #8680	Falling Creek is currently piped under Jackson Middle School. This project will replace the pipe with an open stream channel. It will also construct stormwater facilities to detain and treat stormwater runoff from school parking lots. Design is scheduled to start in 2014 and construction in 2015 and/or 2016.	Yes	SHORT TERM: 0-5 years	MEDIUM - 1/2 million to 5 million	SHORT TERM: 0-5 years	1
PDX-40	Stormwater Outfall Maintenance CIP #8677	BES is now designing improvements to one stormwater outfall to Falling Creek (a tributary to Tryon Creek) and two outfalls to Fanno Creek main stem near Beaverton Hillisdale Highway. These projects will upgrade stormwater infrastructure. Design is scheduled to be completed in 2013 and construction is planned in 2014.	Yes	SHORT TERM: 0-5 years	MEDIUM - 1/2 million to 5 million	SHORT TERM: 0-5 years	1
PDX-41	Fanno/Tryon Water Quality Facilities CIP #8687	These are four sites for stormwater management facilities. One facility in Fanno Creek was constructed in 2010 and the other Fanno Creek site has been incorporated into another project. Two potential sites in upper Tryon Creek remain.	NO	SHORT TERM: 0-5 years	MEDIUM - 1/2 million to 5 million	SHORT TERM: 0-5 years	

DRAFT STEERING COMMITTEE RECOMMENDATION (continued)

Southwest Corridor: Parks, Natural Areas and Environmental Restoration Projects - 7/1/13

Jurisdiction and project number	Project Title /Location	Project Description	Funding	Funding Timing	Estimated Cost	Recommendation	Jurisdictional Priorities
PDX-43	Beaverton Hillside Highway Drainage Improvement	BES is now designing stormwater retrofits for Beaverton Hillside Highway. These projects will detain and treat stormwater runoff from the roadway. Design is scheduled to be completed in summer 2014 and construction is planned in 2014/2015.	Yes	SHORT TERM: 0-5 years	MEDIUM - 1/2 million to 5 million	SHORT TERM: 0-5 years	1
PDX-45	Western end of the Arnold/Tryon Creek corridor	Address fragmented wildlife corridors by installing a diverse mix of site-appropriate herbs, trees and shrubs to the extent that there are not significant gaps in tree cover. Maximize the width of the vegetated corridor. Create occasional meadows but not at the expense of leaving a gap in tree cover connection along the corridor. Stabilize soil erosion using bioengineering practices.	Yes	SHORT TERM: 0-5 years; 2012-2013	MEDIUM - 1/2 million to 5 million	SHORT TERM: 0-5 years	
PDX-46	The narrow treed area between Ash Creek Natural Area and Woods Memorial Natural Area	Address fragmented wildlife corridors by installing a diverse mix of site-appropriate herbs, trees and shrubs to the extent that there are not significant gaps in tree cover. Maximize the width of the vegetated corridor. Create occasional meadows but not at the expense of leaving a gap in tree cover connection along the corridor. Stabilize soil erosion using bioengineering practices.	Yes	SHORT TERM: 0-5 years; 2012-2013	MEDIUM - 1/2 million to 5 million	SHORT TERM: 0-5 years	
PDX-47	Corridors between Woods Memorial Natural Area to Gabriel and April Hill Parks	Address fragmented wildlife corridors by installing a diverse mix of site-appropriate herbs, trees and shrubs to the extent that there are not significant gaps in tree cover. Maximize the width of the vegetated corridor. Create occasional meadows but not at the expense of leaving a gap in tree cover connection along the corridor. Stabilize soil erosion using bioengineering practices.	Yes	MID TERM: 5-15 years	MEDIUM - 1/2 million to 5 million	MID TERM: 5-15 years	
PDX-48	Corridor from Riverview Cemetery through any of three potential routes to (a) George Himes Park, (b) Terwilliger natural areas, (c) Marquam Nature Park, Council Crest and eventually Forest Park	Address fragmented wildlife corridors by installing a diverse mix of site-appropriate herbs, trees and shrubs to the extent that there are not significant gaps in tree cover. Maximize the width of the vegetated corridor. Create occasional meadows but not at the expense of leaving a gap in tree cover connection along the corridor. Stabilize soil erosion using bioengineering practices.	Yes	SHORT TERM: 0-5 years; 2012-2013	MEDIUM - 1/2 million to 5 million	SHORT TERM: 0-5 years	
PDX-49	Park Site behind Fred Meyer	Preliminary concept idea for implementing neighborhood park for proposed increased density at focus areas on Barbur Boulevard	No	MID TERM: 5-15 years	MEDIUM - 1/2 million to 5 million	MID TERM: 5-15 years	
PDX-50	Park Site behind Safeway	Preliminary concept idea for implementing neighborhood park for proposed increased density at focus areas on Barbur Boulevard	No	MID TERM: 5-15 years	MEDIUM - 1/2 million to 5 million	MID TERM: 5-15 years	
PDX-51	SW 53rd Neighborhood Greenway	Provide safe pedestrian/bike facilities for connectivity	No	SHORT TERM: 0-5 years; 2012-2013	MEDIUM - 1/2 million to 5 million	SHORT TERM: 0-5 years	
PDX-52	Sidewalks, Street Trees, and Green Streets in SW Corridor	Improving active transportation links, new sidewalks, greenways for better access and connectivity	No	Ongoing	LOW - Under 1/2 million	Ongoing	
PDX-53	Remove Fish Barrier	Remove unnamed culvert ODFW ID #7 on Ball Creek. Unknown passage status. Barrier subtype is 'full box.'	No	MID TERM: 5-15 years	MEDIUM - 1/2 million to 5 million	MID TERM: 5-15 years	
PDX-54	Remove Fish Barrier	Remove unnamed culvert ODFW ID #15. Unknown passage status. Barrier subtype is 'round.' Culvert assessment by ODFW staff (1996-1999) using guidelines and criteria to determine fish passage. Culvert is not on straight-line chart. Lower 25' backflows, possible velocity barrier.	No	MID TERM: 5-15 years	MEDIUM - 1/2 million to 5 million	MID TERM: 5-15 years	
PDX-55	Remove Fish Barrier	Remove unnamed culvert ODFW ID #24 on Arnold Creek. Passage status is blocked. Barrier subtype is 'round.' Professional judgment was used to evaluate this culvert, located at SW Lancaster Rd. It is 1.3M concrete.	No	MID TERM: 5-15 years	MEDIUM - 1/2 million to 5 million	MID TERM: 5-15 years	

DRAFT STEERING COMMITTEE RECOMMENDATION (continued)

Southwest Corridor: Parks, Natural Areas and Environmental Restoration Projects -7/1/13

DISCUSSION DRAFT, July 1, 2013

Jurisdiction and project number	Project Title /Location	Project Description	Funding	Funding Timing	Estimated Cost	Recommendation	Jurisdictional Priorities
PDX-56	Remove Fish Barrier	Remove unnamed culvert ODFW ID #26 on South Fork Ash Creek. Barrier subtype is unknown. Passable passage status. Professional judgment was used to evaluate this culvert, located as SW 55th.	No	MID TERM: 5-15 years	MEDIUM - 1/2 million to 5 million	MID TERM: 5-15 years	
PDX-57	Remove Fish Barrier	Remove unnamed culvert ODFW ID #27 on South Fork Ash Creek. Barrier subtype is unknown. Professional judgment was used to evaluate this culvert.	No	MID TERM: 5-15 years	MEDIUM - 1/2 million to 5 million	MID TERM: 5-15 years	
PDX-58	Remove Fish Barrier	Remove unnamed structure ODFW ID #29 on South Fork Ash Creek. Barrier type is an exposed sewer pipe. Partially blocked passage status. Professional judgment was used to evaluate this structure.	No	MID TERM: 5-15 years	MEDIUM - 1/2 million to 5 million	MID TERM: 5-15 years	
PDX-59	Remove Fish Barrier	Remove unnamed structure ODFW ID #31 on South Fork Ash Creek. Passable passage status. Professional judgment was used to evaluate the structure. Comment says, 'house on top of creek SW Lauradel.'	No	MID TERM: 5-15 years	MEDIUM - 1/2 million to 5 million	MID TERM: 5-15 years	
PDX-60	Remove Fish Barrier	Remove unnamed culvert ODFW ID #33 on South Fork Ash Creek. Partially blocked passage status. Professional judgment was used to evaluate this culvert at SW 62nd, at a housing development.	No	MID TERM: 5-15 years	MEDIUM - 1/2 million to 5 million	MID TERM: 5-15 years	
PDX-61	Remove Fish Barrier	Remove unnamed culvert ODFW ID #34 on South Fork Ash Creek. Passable passage status. Professional judgment was used to evaluate the culvert, near a walking path.	No	MID TERM: 5-15 years	MEDIUM - 1/2 million to 5 million	MID TERM: 5-15 years	
PDX-62	Remove Fish Barrier	Remove unnamed culvert ODFW ID #46 on Tryon Creek. Partially blocked passage status. Barrier subtype is 'round'. Professional judgment was used to evaluate the culvert at SW Maple Crest Dr. It is 1.7m metal.	No	MID TERM: 5-15 years	MEDIUM - 1/2 million to 5 million	MID TERM: 5-15 years	
PDX-63	Remove Fish Barrier	Remove unnamed culvert ODFW ID #48 on Tryon Creek. Passable passage status. Barrier subtype is 'round'. Professional judgment was used to evaluate this culvert at SW 18th Pl. It is 1.7m metal.	No	MID TERM: 5-15 years	MEDIUM - 1/2 million to 5 million	MID TERM: 5-15 years	
PDX-64	Remove Fish Barrier	Remove unnamed culvert ODFW ID #49 on Woods Creek. Blocked passage status. Barrier subtype is 'round'. Professional judgment was used to evaluate this culvert at SW Taylors Ferry Rd. It is 0.8m metal.	No	MID TERM: 5-15 years	MEDIUM - 1/2 million to 5 million	MID TERM: 5-15 years	
PDX-65	Remove Fish Barrier	Remove unnamed culvert ODFW ID #50 on Tryon Creek. Passable passage status. Barrier subtype is 'round'. Professional judgment was used to evaluate this culvert.	No	MID TERM: 5-15 years	MEDIUM - 1/2 million to 5 million	MID TERM: 5-15 years	
PDX-66	Remove Fish Barrier	Remove unnamed culvert ODFW ID #51 on Tryon Creek. Passable passage status. Barrier subtype is 'round'. Professional judgment was used to evaluate this culvert.	No	MID TERM: 5-15 years	MEDIUM - 1/2 million to 5 million	MID TERM: 5-15 years	
PDX-67	Remove Fish Barrier	Remove unnamed culvert ODFW ID #54 on Ash Creek. Barrier subtype is 'round'. Professional judgment was used to evaluate this culvert at SW 55th. It is 0.8m concrete.	No	MID TERM: 5-15 years	MEDIUM - 1/2 million to 5 million	MID TERM: 5-15 years	
PDX-68	Remove Fish Barrier	Remove unnamed culvert ODFW ID #58 on Ash Creek. Barrier subtype is 'round'. Professional judgment was used to evaluate this culvert at SW Lancaster. It is 0.7m concrete.	No	MID TERM: 5-15 years	MEDIUM - 1/2 million to 5 million	MID TERM: 5-15 years	
PDX-69	Remove Fish Barrier	Remove unnamed culvert ODFW ID #59 on Falling Creek. Barrier subtype is 'round'.	No	MID TERM: 5-15 years	MEDIUM - 1/2 million to 5 million	MID TERM: 5-15 years	

DRAFT STEERING COMMITTEE RECOMMENDATION (continued)

Southwest Corridor: Parks, Natural Areas and Environmental Restoration Projects -7/1/13

Jurisdiction and project number	Project Title /Location	Project Description	Funding	Funding Timing	Estimated Cost	Recommendation	Jurisdictional Priorities
PDX-70	Remove Fish Barrier	Remove unnamed culvert ODFW ID #60 on Falling Creek. Barrier subtype is 'round.'	No	MID TERM: 5-15 years	MEDIUM - 1/2 million to 5 million	MID TERM: 5-15 years	
PDX-71	Remove Fish Barrier	Remove unnamed structure ODFW ID #62 on Ash Creek. Partially blocked passage status. Barrier type is an exposed sewer pipe. Professional judgment was used to evaluate this structure. Comment says: "step ht=0.45m exposed sewer pipe crossing."	No	MID TERM: 5-15 years	MEDIUM - 1/2 million to 5 million	MID TERM: 5-15 years	
PDX-72	Remove Fish Barrier	Remove unnamed culvert ODFW ID #63 on Woods Creek. Blocked passage status. Barrier subtype is 'round.' Professional judgment was used to evaluate this culvert at SW 45th. It is 0.9m metal.	No	MID TERM: 5-15 years	MEDIUM - 1/2 million to 5 million	MID TERM: 5-15 years	
PDX-73	Remove Fish Barrier	Remove unnamed culvert ODFW ID #64. Unknown passage status. Barrier subtype is 'round.'	No	MID TERM: 5-15 years	MEDIUM - 1/2 million to 5 million	MID TERM: 5-15 years	
PDX-74	Remove Fish Barrier	Remove unnamed culvert ODFW ID #65 on Ash Creek. Barrier subtype is 'round.' Professional judgment was used to evaluate this culvert at SW Orchid Dr. It is 1.2m concrete.	No	MID TERM: 5-15 years	MEDIUM - 1/2 million to 5 million	MID TERM: 5-15 years	
PDX-75	Remove Fish Barrier	Remove unnamed culvert ODFW ID #66 on Ash Creek. Barrier subtype is 'round.' Professional judgment was used to evaluate this culvert at SW Dolph. It is 1.0m concrete.	No	MID TERM: 5-15 years	MEDIUM - 1/2 million to 5 million	MID TERM: 5-15 years	
PDX-76	Remove Fish Barrier	Remove unnamed culvert ODFW ID #67 on Wood Creek. Barrier subtype is 'round.' Professional judgment was used to evaluate this culvert SW Garden Home Rd. It is 1.0m metal.	No	MID TERM: 5-15 years	MEDIUM - 1/2 million to 5 million	MID TERM: 5-15 years	
PDX-77	Remove Fish Barrier	Remove unnamed culvert ODFW ID #68 on Vermont Creek. Barrier subtype is 'round.' Professional judgment was used to evaluate this culvert. Comments include, "end of survey; cr. Never surface 0.65m concrete no drop."	No	MID TERM: 5-15 years	MEDIUM - 1/2 million to 5 million	MID TERM: 5-15 years	
PDX-78	Remove Fish Barrier	Remove unnamed culvert ODFW ID #69. Barrier subtype is 'round.' Owner is ODOT. Culvert assessment by ODFW staff (1996-1999) using guidelines and criteria to determine fish passage. Comments include, "not on straight-line chart. 0.4 miles north of Sellwood Br. 4' falls above culvert. City culvert below appears to be velocity barrier."	No	MID TERM: 5-15 years	MEDIUM - 1/2 million to 5 million	MID TERM: 5-15 years	
PDX-79	Custer Park Pollution Reduction Facility	Custer Park pollution reduction facility upgrade; expansion of capacity and function of existing swale and pond located along Custer Creek in Custer Park to improve stormwater services and recreation use. BES: Project 5.2/2014 CIP - \$230,000	No	SHORT TERM: 0-5 years	LOW - Under 1/2 million		1
PDX-80	Stephens Creek Nature Park Detentions and Wetland facilities	Stephens Nature Park in-line detention and wetland enhancement; construct detention facility in Stephens Creek upstream of the Burlingame culvert and enhance existing wetland, consistent with 2005 A Functional Plan for Stephens Creek Nature Park and planned 2013 trail improvements. BES: Project 31.1a/b /2014 CIP - \$750,000	No	SHORT TERM: 0-5 years	MEDIUM - 1/2 million to 5 million		1
PDX-81	Raz Wetlands	Raz property wetland detention facility; detention and stream channel construction in undeveloped property at the headwaters of Stephens Creek. BES has a signed contract in place to purchase this property. BES: Project 24.6/2014 CIP - \$1,030,000	No	SHORT TERM: 0-5 years	MEDIUM - 1/2 million to 5 million		1
PDX-82	Greater Portland Bible Church neighborhood facility	Greater Portland Bible Church neighborhood facility; an opportunity exists to construct a vegetated stormwater treatment facility on a tax lot adjacent to the Greater Portland Bible Church. BES: Project 6.1/6.3/ CIP 2014	No	SHORT TERM: 0-5 years	LOW - Under 1/2 million		
PDX-83	Stephens Creek Tributaries Outfall Repair	Repair and enhancement of 17 public and private stormwater outfalls on the River View, River View South, and Ruby Creek tributaries of Stephens Creek. BES: Project /CIP 2014 - \$960,000	No	SHORT TERM: 0-5 years	MEDIUM - 1/2 million to 5 million		1

DRAFT STEERING COMMITTEE RECOMMENDATION (continued)

Southwest Corridor: Parks, Natural Areas and Environmental Restoration Projects -7/1/13

DISCUSSION DRAFT, July 1, 2013

Jurisdiction and project number	Project Title /Location	Project Description	Funding	Funding Timing	Estimated Cost	Recommendation	Jurisdictional Priorities
PDX-84	Right-of-way Retrofit Shell	Provides a flexible means to construct stormwater retrofits to the existing system on streets identified as high-priority for detention and/or and pollution reduction. I-5. BES: Project / CIP 2014 - \$1,000,000	No	SHORT TERM: 0-5 years	MEDIUM - 1/2 million to 5 million		1
PDX-85	SW Terwilliger Shared Detention Facility	ODOT Shared Detention and Pollution Reduction Facilities - SW Terwilliger shared detention facility. BES: Project 23.1a/ CIP 2015 - \$220,000	No	SHORT TERM: 0-5 years	LOW - Under 1/2 million		1
PDX-86	Fulton Park Neighborhood Wetland Facility	ODOT Shared Detention and Pollution Reduction Facilities - Fulton Park neighborhood wetland facility adjacent to the community garden. BES: Project 21.2b/ CIP 2015 - \$470,000	No	SHORT TERM: 0-5 years	LOW - Under 1/2 million		1
PDX-87	A-Boy Plumbing neighborhood detention facility	ODOT Shared Detention and Pollution Reduction Facilities - A-Boy Plumbing neighborhood detention facility adjacent to I-5 in existing low point. BES: Project 21.1a/ CIP 2015 - \$1,280,000	No	SHORT TERM: 0-5 years	MEDIUM - 1/2 million to 5 million		
PDX-88	Stormwater filter vault at ODOT right-of-way	ODOT Shared Detention and Pollution Reduction Facilities - Stormwater filter vault at ODOT right-of-way, which can treat both I-5 runoff, city streets, and private property. BES: Project 23.2/ CIP 2015 - \$500,000	No	SHORT TERM: 0-5 years	LOW - Under 1/2 million		1
PDX-89	Local stormwater treatment facilities on I-5 overpasses	ODOT Shared Detention and Pollution Reduction Facilities - Local stormwater treatment facilities on I-5 overpasses. BES: Project 23.3/ CIP 2015 - \$110,000	No	SHORT TERM: 0-5 years	LOW - Under 1/2 million		1
PDX-90	Rain gardens for bioremediation of I-5 outfalls	ODOT Shared Detention and Pollution Reduction Facilities - Rain gardens for bioremediation of I-5 outfalls adjacent to Stephens Creek. BES: Project 25.5/ CIP 2015 - \$140,000	No	SHORT TERM: 0-5 years	LOW - Under 1/2 million		1
PDX-91	River View Tributary Improvements	Stephens Creek Tributaries Habitat Restoration - River View Tributary—improve near-stream habitat; this project will improve habitat conditions in the stream by restoring in-stream habitats and wetlands, and improving habitat connectivity through bank layback, and installation of large wood. It will improve the diversity of native plants in the riparian area. BES: Project 9.3a/ CIP 2015 - \$260,000	No	SHORT TERM: 0-5 years	LOW - Under 1/2 million		
PDX-92	River View neighborhood scale wetland facility	Stephens Creek Tributaries Habitat Restoration - River View neighborhood scale wetland facility; this project will enhance wetlands associated with River View and Taylors Ferry tributaries to improve habitat, peak flows, and water quality. BES: Project 9.5/ CIP 2015 - \$67,000	No	SHORT TERM: 0-5 years	LOW - Under 1/2 million		1
PDX-93	Crestline Creek Stream Improvements	Stephens Creek Tributaries Habitat Restoration - Crestline Creek—improve near-stream habitat; this project will include removal of invasive plants and revegetation with native plants, improvement of near-stream habitat, and educate and encourage property owners to remove invasive plants and re-populate with riparian vegetation along the Crestline Creek riparian corridor, including the area along the surface channel near the headwaters. BES: Project 12.4/CIP 2015 - \$40,000	No	SHORT TERM: 0-5 years	LOW - Under 1/2 million		1
PDX-94	Ruby Creek Stream Improvements	Stephens Creek Tributaries Habitat Restoration - Ruby Creek—improve near-stream habitat; this project will focus on education and outreach to encourage property owners to remove invasive plants and re-populate revegetation with native plants and riparian vegetation along the Ruby Creek riparian corridor to where it flows into the mainstem Stephens Creek. BES: Project 19.3/ CIP 2015 - \$22,000	No	SHORT TERM: 0-5 years	LOW - Under 1/2 million		
PDX-95	Private Property Partnership Shell	Stephens Creek Tributaries Habitat Restoration - This shell will fund projects that mitigate stormwater runoff from existing impervious surface on private property or create stormwater assets not owned and operated by BES. The Private Property Partnership Shell is intended as a flexible means to incentivize stormwater projects on private properties that help cost-effectively meet BES's stormwater system improvements needs. This could include funding larger facilities than would otherwise be required by the SWMM or construction of habitat and restoration projects in natural systems that are impaired by runoff from the BES stormwater system. BES: Project BWR/2/ Select projects for CIP 2015 - \$2,007,000 + \$50,000 for commercial property retrofits with ecoroof and pervious pavement.	No	SHORT-TERM: 0-5 years	MEDIUM - 1/2 million to 5 million		

DRAFT STEERING COMMITTEE RECOMMENDATION (continued)

Southwest Corridor: Parks, Natural Areas and Environmental Restoration Projects -7/1/13

Jurisdiction and project number	Project Title /Location	Project Description	Funding	Funding Timing	Estimated Cost	Recommendation	Jurisdictional Priorities
PDX-96	Fulton Park stream daylighting	Headwaters Stream Enhancement and Daylighting - Fulton Park stream daylighting; there is an opportunity to daylight the piped stormwater runoff in Fulton Park to the adjacent historic channel (Miles Creek), which would ultimately lead to improved habitat and biological communities. The runoff would be attenuated and treated before returning to the pipe and being conveyed under I-5. BES: Project 32.1/CIP 2017 - \$860,000	No	SHORT TERM; 0-5 years	MEDIUM - 1/2 million to 5 million		
PDX-97	In-stream habitat improvements at Cloverleaf Apartment	Headwaters Stream Enhancement and Daylighting - Improve in-stream habitat at Cloverleaf Apartments; this project consists of restoration work at the Clover Leaf reach of the Stephens Creek mainstem. This project should consider the presence of hydric soils and work to improve connectivity of the stream to springs and remnant floodplain elevations. Riparian and in-stream restoration will include bank layback where downcutting has occurred, installation of large wood complexes to create small in-stream pools, addition of coarse sediment materials to improve in-stream habitat. Riparian enhancement will include replanting with riparian and emergent vegetation. Reconstruct discharge outfalls from building and parking stormwater runoff to enhance floodplain function. BES: Project 31.4/CIP 2017 - \$471,000	No	SHORT TERM; 0-5 years	LOW - Under 1/2 million		
PDX-98	Capitol Hills Condos stream daylighting	Headwaters Stream Enhancement and Daylighting - Capitol Hills Condos stream daylighting; work with private property owners to remove piped section of Stephens Creek through the Condo complex. Replace with restored stream channel and adjacent riparian area. BES: Project 24.8/ CIP 2017 - \$1,470,000	No	SHORT TERM; 0-5 years	MEDIUM - 1/2 million to 5 million		
PDX-99	Shadow Hills Apartments stream enhancement	Headwaters Stream Enhancement and Daylighting - Shadow Hills Apartments stream enhancement; restoration work at the Shadow Hills reach of Stephens Creek should consider the presence of hydric soils and work to improve connectivity of the stream to springs and remnant floodplain elevations (present or created). Riparian and in-stream restoration of the Shadow Hills reach of Stephens Creek will include bank layback where downcutting has occurred, installation of large wood complexes to create small in-stream pools, addition of coarse sediment materials to improve in-stream habitat. Riparian enhancement will include replanting with riparian and emergent vegetation. Reconstruct discharge outfalls from building and parking stormwater runoff to enhance floodplain function. BES: Project 24.9/ CIP 2017 - \$470,000	No	SHORT TERM; 0-5 years	LOW - Under 1/2 million		
PDX-100	Taylor's Ferry improve in-stream habitat	Headwaters Stream Enhancement and Daylighting - Taylor's Ferry improve in-stream habitat; add in-stream cover for aquatic organisms and to stabilize banks. This project is intended to meet the alternative themes to emphasize biological communities and habitat restoration. BES: Project 28.3d/ CIP 2017 - \$1,080,000	No	SHORT TERM; 0-5 years	MEDIUM - 1/2 million to 5 million		
PDX-101	Replace Macadam Culvert	Remove existing culverts under Highway 43 and replace with a larger culvert/span and restore natural substrate to Stephens Creek. Remove invasive species (English ivy and Himalayan blackberry) and plant native riparian vegetation in the currently degraded buffer zones between Macadam and Stephens Creek. Increase in-stream habitat to support benthic invertebrates and native fish. BES: Project 29.1/ CIP 2017 - \$440,000	No	SHORT TERM; 0-5 years	LOW - Under 1/2 million		
PDX-102	Lay back banks Burlingame reach	Lay back banks Burlingame reach. BES:25.1a/ No CIP identified \$334,000	No	Medium term: 5-15 years	LOW - Under 1/2 million		
PDX-103	Improve in-stream habitat Burlingame reach	Improve in-stream habitat Burlingame reach. BES:25.1c/ No CIP identified - \$1,862,000	No	Medium term: 5-15 years	MEDIUM - 1/2 million to 5 million		
PDX-104	Wetland enhancement Burlingame reach	Wetland enhancement Burlingame reach. BES: Project 25.2/No CIP identified- \$67,000	No	Medium term: 5-15 years	LOW - Under 1/2 million		1
PDX-105	Stephens Canyon I-5 Runoff to Willamette or Combined System	Stephens Canyon I-5 Runoff to Willamette or Combined System. BES: Project 26.1, 26.1f/ No CIP identified at this time - \$4,069,000	No	Medium term: 5-15 years	MEDIUM - 1/2 million to 5 million		1

DRAFT STEERING COMMITTEE RECOMMENDATION (continued)

Southwest Corridor: Parks, Natural Areas and Environmental Restoration Projects -7/1/13

Jurisdiction and project number	Project Title /Location	Project Description	Funding	Funding Timing	Estimated Cost	Recommendation	Jurisdictional Priorities
PDX-106	Mausoleum Tributary property acquisition	Mausoleum Tributary property acquisition. BES: Project 27.4b/No CIP identified at this time - \$2,268,000	No	Medium term: 5-15 years	MEDIUM - 1/2 million to 5 million		
PDX-107	Mausoleum North property acquisition	Mausoleum North property acquisition. BES: Project 27.6/ No CIP identified at this time - \$851,000	No	Medium term: 5-15 years	MEDIUM - 1/2 million to 5 million		
PDX-108	Wetland enhancement Burlingame reach	Wetland enhancement Burlingame reach, separate location- this is not a repeat of PDX-104. BES: Project 27.3/ No CIP identified at this time - \$67,000	No	Medium term: 5-15 years	LOW - Under 1/2 million		
PDX-109	Mausoleum property revegetation	Mausoleum property revegetation. BES: Project 27.4a/No CIP identified at this time - \$161,000	No	Medium term: 5-15 years	LOW - Under 1/2 million		
PDX-110	Taylor's Ferry stream daylighting	Taylor's Ferry stream daylighting. BES: Project 28.3b/No CIP identified at this time - \$1,386,000	No	Medium term: 5-15 years	MEDIUM - 1/2 million to 5 million		
PDX-111	Taylor's Ferry culvert replacement	Taylor's Ferry culvert replacement. BES: Project 28.3a /No CIP identified at this time - \$326,000	No	Medium term: 5-15 years	LOW - Under 1/2 million		1
PDX-112	Natural fish ladder above Hwy 43 culvert	Natural fish ladder above Hwy 43 culvert. BES: Project 28.3c /No CIP identified at this time - \$1,318,000	No	Medium term: 5-15 years	High - 5 million+		
PDX-113	Macadam improve near-stream habitat	Macadam improve near-stream habitat. BES: Project 29.5/No CIP identified at this time - \$188,000	No	Medium term: 5-15 years	LOW - Under 1/2 million		
PDX-114	Boones Ferry neighborhood detention pond	2.1b Boones Ferry neighborhood detention pond. BES: Project 2.1b/No CIP identified at this time - \$405,000	No	Medium term: 5-15 years	LOW - Under 1/2 million		
PDX-115	River View Cemetery improve in-stream habitat	River View Cemetery improve in-stream habitat. BES: Project 9.3b/No CIP identified at this time - \$8,972,000	No	Medium term: 5-15 years	High - 5 million+		
PDX-116	Restore in-stream connectivity for fish passage	Restore in-stream connectivity for fish passage - Taylor's Ferry tributary. BES: Project 9.4/No CIP identified at this time - No cost estimate at this time.	No	Medium term: 5-15 years	High - 5 million+		
PDX-117	Large wood installations, invasives control and revegetation in Stephens Canyon	Large wood installations, invasives control and revegetation in Stephens Canyon. BES: Project 26.2/No CIP identified at this time - \$890,000	No	Medium term: 5-15 years	MEDIUM - 1/2 million to 5 million		
PDX-118	SW Evans neighborhood facilities	SW Evans neighborhood facilities. BES: Project 17.3/No CIP identified at this time - \$626,000	No	Medium term: 5-15 years	MEDIUM - 1/2 million to 5 million		
PDX-119	SW Terwilliger improve near-stream habitat in ODOT right-of-way	23.4a SW Terwilliger improve near-stream habitat in ODOT right-of-way. BES: Project 23.4a/No CIP identified at this time - \$55,000	No	Medium term: 5-15 years	LOW - Under 1/2 million		

DRAFT STEERING COMMITTEE RECOMMENDATION (continued)

Southwest Corridor: Parks, Natural Areas and Environmental Restoration Projects -7/1/13

Jurisdiction and project number	Project Title /Location	Project Description	Funding	Funding Timing	Estimated Cost	Recommendation	Jurisdictional Priorities
PDX-120	SW Terwilliger improve in-stream habitat	SW Terwilliger improve in-stream habitat. BES: Project 23.4b/No CIP identified at this time - \$419,000	No	Medium term: 5-15 years	LOW - Under 1/2 million		
PDX-121	Improve near-stream habitat Clover Leaf Apt.	Improve near-stream habitat Clover Leaf Apt. BES: Project 31.3/No CIP identified at this time - \$2,000	No	Medium term: 5-15 years	LOW - Under 1/2 million		1
PDX-122	Spring Creek riparian restoration	Spring Creek riparian restoration. BES: Project 24.10/No CIP identified at this time - \$3,000	No	Medium term: 5-15 years	LOW - Under 1/2 million		1
PDX-123	Raz Transportation acquisition, stream daylighting, LUST Cleanup	Raz Transportation acquisition, stream daylighting, LUST Cleanup. BES: Project 31.2a, b, c/No CIP identified at this time - \$1,341,000	No	Medium term: 5-15 years	MEDIUM - 1/2 million to 5 million		
PDX-124	Culvert removal and daylighting in Burlingame reach	Culvert removal and daylighting in Burlingame reach. BES: Project 25.1b /No CIP identified at this time - \$145,000	No	Medium term: 5-15 years	LOW - Under 1/2 million		
PDX-125	Expand and enhance Texas Wetland	Expand and enhance Texas Wetland. BES: Project 3.1 /Op CIP 2014 - \$21,000	Partial	SHORT TERM: 0-5 years	LOW - Under 1/2 million		1
PDX-126	Restore historic channel at Miles Creek	Restore historic channel at Miles Creek. BES: Project 26.7 /on hold in WIF - \$437,000	No	SHORT TERM: 0-5 years	LOW - Under 1/2 million		1
PDX-127	Real time controls stormwater retrofit at Burlingame Fred Meyer and nearby apartments	Real time controls stormwater retrofit at Burlingame Fred Meyer and nearby apartments. BES: Project 32.3 /No CIP identified at this time - \$76,000	No	Medium term: 5-15 years	LOW - Under 1/2 million		
PDX-128	Curb extension retrofits on PBOT high-priority streets	BWRF.1 Curb extension retrofits on PBOT high-priority streets BES: Project BWRF.1 /No CIP identified at this time - \$4,565,000 Select projects identified for CIP 2014	No	SHORT TERM: 0-5 years	MEDIUM - 1/2 million to 5 million		1
PDX-129	Curb extension retrofits on all right-of-way	BWRF.2 Curb extension retrofits on all right-of-way. BES: Project BWRF.2 /No CIP identified at this time \$23,386,000	No	Medium term: 5-15 years	High- 5 million +		
PDX-130	Basin wide tree planting	Basin wide tree planting. BES: Project BWRF.4/ No CIP identified at this time - \$1,660,000	No	Medium term: 5-15 years	MEDIUM - 1/2 million to 5 million		
PDX-131	Apt Retrofit (Spring Creek, Shadow Hills and Capitol Hill)	Apt Retrofit (Spring Creek, Shadow Hills and Capitol Hill). BES project 24.5. \$1,602,000 NO CIP identified at this time.	No	Medium term: 5-15 years	MEDIUM - 1/2 million to 5 million		
PDX-132	Capitol Hill School and St Claire Church Retrofits	Capitol Hill School and St Claire Church Retrofits. BES project 22.1. \$2,653,000 NO CIP identified at this time.	No	Medium term: 5-15 years	MEDIUM - 1/2 million to 5 million		
PDX-133	Stormwater retrofit at Hilldale Community Church	Stormwater retrofit at Hilldale Community Church. BES project 3.4. \$668,000 NO CIP identified at this time.	No	Medium term: 5-15 years	MEDIUM - 1/2 million to 5 million		

DRAFT STEERING COMMITTEE RECOMMENDATION (continued)

Southwest Corridor: Parks, Natural Areas and Environmental Restoration Projects -7/1/13

DISCUSSION DRAFT, July 1, 2013

Jurisdiction and project number	Project Title /Location	Project Description	Funding	Funding Timing	Estimated Cost	Recommendation	Jurisdictional Priorities
PDX - 200	Roadside Drainage and Shoulder Improvements, SW Hamilton	BES is planning to construct drainage (improving existing roadside ditches) and road shoulder improvements on selected uncurbed streets in the Fanno and Tryon watersheds in the next five years. Currently design of improvements to SW Hamilton (between SW Shattuck and SW Dorsch) will be completed this summer and construction is planned in spring 2014. Funding for additional identified streets is planned to start in 2015/16.	Yes	SHORT TERM: 0-5 years	MEDIUM - 1/2 million to 5 million		1
PDX - 201	Roadside Drainage and Shoulder Improvements, SW Stephenson	BES is planning to construct drainage (improving existing roadside ditches) and road shoulder improvements on selected uncurbed streets in the Fanno and Tryon watersheds in the next five years. Currently design of improvements to SW Stephenson (between SW 35 th and SW Boones Ferry) will be completed this summer and construction is planned in spring 2014. Funding for additional identified streets is planned to start in 2015/16.	Yes	SHORT TERM: 0-5 years	MEDIUM - 1/2 million to 5 million		1
PDX - 202	Portland Community College Sylvania Campus Stormwater Retrofits	Forty-seven potential stormwater retrofit projects have been identified on the PCC campus. One project was constructed in 2009.	No	Medium term: 5-15 years	MEDIUM - 1/2 million to 5 million		1
PDX - 203	Marquam Woods Subwatershed Improvement Strategies Opportunities	BES's Willamette Watershed Team has produced an Improvement Strategies report that identifies opportunities to improve watershed health in the Marquam-Woods subwatershed. Recommended actions include stormwater retrofits, planting trees, removing invasive plants and restoring native vegetation. http://www.portlandoregon.gov/bes/article/251889	Partial	varied	MEDIUM - 1/2 million to 5 million		1
PDX - 204	Carolina-Terwilliger Subwatershed Improvement Strategies Opportunities	BES's Willamette Watershed Team has produced an Improvement Strategies report that identifies opportunities to improve watershed health in the Carolina-Terwilliger subwatershed. Recommended actions include stormwater retrofits, planting trees, removing invasive plants and restoring native vegetation. http://www.portlandoregon.gov/bes/article/251888	Partial	varied	MEDIUM - 1/2 million to 5 million		1
PDX - 205	California Subwatershed Improvement Strategies Opportunities	BES's Willamette Watershed Team has produced an Improvement Strategies report that identifies opportunities to improve watershed health in the California subwatershed. Recommended actions include stormwater retrofits, planting trees, removing invasive plants and restoring native vegetation. http://www.portlandoregon.gov/bes/article/251885	Partial	varied	MEDIUM - 1/2 million to 5 million		1
PDX-206	Fulton Park revegetation FORMERLY PDX - 125 DUPLICATE NUMBER	Fulton Park revegetation. BES: Project 32.3 /Op CIP 2014 - \$36,000	No	SHORT TERM: 0-5 years	LOW-Under 1/2 million		1
PDX-207	Mausoleum Retrofits Formerly PDX-127 DUPLICATE NUMBER	Mausoleum Retrofits. BES: Project 27.1, 27.2/No CIP identified at this time - \$55,000	No	Medium term: 5-15 years	LOW-Under 1/2 million		
CITY OF TIGARD							
T1-1	Fanno Creek Corridor Trail (T7)	Woodward Park to Grant (partially funded), Grant to Main (partially funded), Planning and Acquisition, MORE important	Yes; Partially funded	SHORT TERM: 0-5 years	MEDIUM - 1/2 million to 5 million	SHORT TERM: 0-5 years	
T1-2	Fanno Creek Corridor Trail (T11)	Trail link from Tigard Public Library to Milton Court/Bonita Road	No	SHORT TO MID TERM: 0-15 years	MEDIUM - 1/2 million to 5 million	SHORT TERM: 0-5 years	
T1-3	Fanno Creek Corridor Trail (T6)	Trail link from Fanno Creek/Tigard Street to Tigard Transit Center	Yes; Partially funded	SHORT TERM: 0-5 years	MEDIUM - 1/2 million to 5 million	SHORT TERM: 0-5 years	

DRAFT STEERING COMMITTEE RECOMMENDATION (continued)

Southwest Corridor: Parks, Natural Areas and Environmental Restoration Projects -7/1/13

Jurisdiction and project number	Project Title /Location	Project Description	Funding	Funding Timing	Estimated Cost	Recommendation	Jurisdictional Priorities
TI-4	Fanno Creek stormwater	Stormwater and protection of trail	Yes; Partially funded	SHORT TERM: 0-5 years	MEDIUM - 1/2 million to 5 million	SHORT TERM: 0-5 years	1
TI-5	Fanno Creek Park: Urban Plaza	Acquisition and development of urban plaza for downtown Tigard. The Downtown Plaza was designed to meet the need for a community gathering space for events and everyday use, and the goal of initiating redevelopment under a new Urban Renewal District approved in May of 2006.	Yes; Partially funded	SHORT TO MID TERM: 0-15 years	MEDIUM - 1/2 million to 5 million	SHORT TERM: 0-5 years	1
TI-7	Tualatin River Corridor	Limit pollution and restore native vegetation in riparian zone	No	MID TERM: 5-15 years	HIGH - 5 million and up	MID TERM: 5-15 years	
TI-8	Tualatin River Trail	108th Avenue Grading and Existing Trail Improvements, 108th Avenue to Pacific Highway Extension	No	MID TERM: 5-15 years	MEDIUM - 1/2 million to 5 million	MID TERM: 5-15 years	
TI-9	Tualatin River Water Trail	CWS, Bruce Roll	No	MID TERM: 5-15 years	MEDIUM - 1/2 million to 5 million	MID TERM: 5-15 years	
TI-10	Ash Creek Corridor	Limit pollution and restore native vegetation in riparian zone	Yes	SHORT TERM: 0-5 years; 2012-2013	MEDIUM - 1/2 million to 5 million	SHORT TERM: 0-5 years	1
TI-11	Washington Square Connection/Washington Square Loop	Trail Loop complete in THPRD. Fanno Creek to Highway 217 Sidewalk and Bikeway improvements, less important	No	LONG TERM: Beyond 15 years	HIGH - 5 million and up	LONG TERM: Beyond 15 years	
TI-13	Dirksen Nature Park Education Center	Dirksen Nature Park Education Center. Update and improve the education facility and parking area.	Yes; Partially funded	SHORT TERM: 0-5 years	LOW - Under 1/2 million	SHORT TERM: 0-5 years	1
TI-14	Summer Creek Trail and Corridor	Summer Crest Drive and Tigard Street sidewalk and bikeway improvements, Fowler Nature Education Trail	Yes; Partially funded	SHORT TERM: 0-5 years	LOW - Under 1/2 million	SHORT TERM: 0-5 years	
TI-15	Red Rock Creek, Tigard Triangle	Limit pollution and restore native vegetation in riparian zone	No	MID TO LONG TERM: 5-15 years or beyond	LOW - Under 1/2 million	MID TERM: 5-15 years	
TI-18	East Butte Heritage Park	Upland restoration, enhancement, and invasive species removal	Yes; Partially funded	SHORT TERM: 0-5 years	LOW - Under 1/2 million	SHORT TERM: 0-5 years	1
TI-20	Sunrise and Cach Community Park	Design for additional facilities and programming of park	Yes	SHORT TERM: 0-5 years	MEDIUM - 1/2 million to 5 million	SHORT TERM: 0-5 years	1
TI-21	Krueger Creek and Summer Creek Trail Connections	Summer Creek Trail to Mary Woodard School	No	MID TERM: 5-15 years	LOW - Under 1/2 million	MID TERM: 5-15 years	
TI-22	Ascension Trail	Ascension Trail Improvements	No	MID TERM: 5-15 years	LOW - Under 1/2 million	MID TERM: 5-15 years	

DRAFT STEERING COMMITTEE RECOMMENDATION (continued)

Southwest Corridor: Parks, Natural Areas and Environmental Restoration Projects -7/1/13

DISCUSSION DRAFT, July 1, 2013

Jurisdiction and project number	Project Title /Location	Project Description	Funding	Funding Timing	Estimated Cost	Recommendation	Jurisdictional Priorities
TI-23	Tigard Street trail connection	Fanno Creek/north Dakota Street to Tiedeman Street	No	MID TERM: 5-15 years	LOW - Under 1/2 million	MID TERM: 5-15 years	
TI-24	Fanno Creek (crossing realignment)	Tiedeman Avenue Crossing Re-alignment	No	MID TERM: 5-15 years	MEDIUM - 1/2 million to 5 million	MID TERM: 5-15 years	
TI-25	Fanno Creek - 85th Avenue to Durham	85th Avenue Trail to Durham City/Ki-A-Kuts. Complete an important gap in the trail from Bonita Road to Durham Road. Trail will be built in the street right-of-way of SW 74th Avenue. Tonquin Trail at Ki-A-Kuts bridge over the Tualatin River.	No	MID TERM: 5-15 years	MEDIUM - 1/2 million to 5 million	MID TERM: 5-15 years	
TI-26	Pathfinder-Genesis Trail (T8)	Fanno Creek to Pathfinder Court Trail	Yes: Partially funded	SHORT TERM: 0-5 years	MEDIUM - 1/2 million to 5 million	SHORT TERM: 0-5 years	
TI-27	Westside Trail (T10)	Planned Portland to Tualatin expansion	No	MID TO LONG TERM: 5-15 years or beyond	HIGH - 5 million and up	MID TERM: 5-15 years	
TI-28	Krueger Creek Trail	Walnut Street to Jack Park	Yes: Partially funded	SHORT TERM: 0-5 years	LOW - Under 1/2 million	SHORT TERM: 0-5 years	
TI-29	Fanno Creek Trail - Durham Rd to Tualatin River Trail Connection	Durham Road to Tualatin River Trail	No	MID TERM: 5-15 years	MEDIUM - 1/2 million to 5 million	MID TERM: 5-15 years	
TI-30	Dirksen Nature Park Property	Dirksen Nature Park restoration, enhancement, and invasive species removal. Site improvements including loop trail, parking, natural play area, and sidewalk/street improvements. Acquisition is complete.	Yes: Partially funded	SHORT TERM to MID TERM: 0-15 years	MEDIUM - 1/2 million to 5 million	SHORT TERM: 0-5 years	1
TI-31	Tree Grove protection	Focus on preserving large groves of native trees.	No	Ongoing	MEDIUM - 1/2 million to 5 million	Ongoing	1
TI-32	River Terrace Annexation	Property acquisition for new parks in River terrace UGB expansion area	No	Ongoing	HIGH - 5 million and up	Ongoing	1
TI-33	Looping north of the Tualatin River	Address fragmented wildlife corridors by installing a diverse mix of site-appropriate herbs, trees and shrubs to the extent that there are not significant gaps in tree cover. Maximize the width of the vegetated corridor. Create occasional meadows but not at the expense of leaving a gap in tree cover connection along the corridor. Stabilize soil erosion using bioengineering practices.	No	LONG TERM: Beyond 15 years	MEDIUM - 1/2 million to 5 million	LONG TERM: Beyond 15 years	
TI-34	Fanno Creek forks to the northeast at Fanno Creek Park	Address fragmented wildlife corridors by installing a diverse mix of site-appropriate herbs, trees and shrubs to the extent that there are not significant gaps in tree cover. Maximize the width of the vegetated corridor. Create occasional meadows but not at the expense of leaving a gap in tree cover connection along the corridor. Stabilize soil erosion using bioengineering practices.	No	LONG TERM: Beyond 15 years	MEDIUM - 1/2 million to 5 million	LONG TERM: Beyond 15 years	
TI-35	Fanno Creek	Address fragmented wildlife corridors by installing a diverse mix of site-appropriate herbs, trees and shrubs to the extent that there are not significant gaps in tree cover. Maximize the width of the vegetated corridor. Create occasional meadows but not at the expense of leaving a gap in tree cover connection along the corridor. Stabilize soil erosion using bioengineering practices.	No	LONG TERM: Beyond 15 years	MEDIUM - 1/2 million to 5 million	LONG TERM: Beyond 15 years	

DRAFT STEERING COMMITTEE RECOMMENDATION (continued)

Southwest Corridor: Parks, Natural Areas and Environmental Restoration Projects -7/1/13

Jurisdiction and project number	Project Title /Location	Project Description	Funding	Funding Timing	Estimated Cost	Recommendation	Jurisdictional Priorities
TI-36	South of SW Riverwood Lane, between SW Greenland Brice & SW Wood Crest Avenue	Address fragmented wildlife corridors by installing a diverse mix of site-appropriate herbs, trees and shrubs to the extent that there are not significant gaps in tree cover. Maximize the width of the vegetated corridor. Create occasional meadows but not at the expense of leaving a gap in tree cover connection along the corridor. Stabilize soil erosion using bioengineering practices.	No	LONG TERM: Beyond 15 years	MEDIUM - 1/2 million to 5 million	LONG TERM: Beyond 15 years	
TI-37	Kruse Way Trail	There is an existing bike/ped bridge crossing I-5 at the Hwy 217 interchange. The bridge is part of Lake Oswego's Kruse Way Trail. The trail needs to be extended to the west only a short distance to connect to the Fanno Creek Trail.	No	LONG TERM: Beyond 15 years	HIGH - 5 million and up	LONG TERM: Beyond 15 years	
TI-38	Fanno Creek Trail - Bonita Road to Durham Road Connection	Complete an important gap in the trail from Bonita Road to Durham Road. Trail will be built in the street right-of-way of SW 74th Avenue.	No	MID TERM: 5-15 years	MEDIUM - 1/2 million to 5 million	MID TERM: 5-15 years	
TI-39	Red Rock Creek Bike/Ped Crossing	Provide bike/ped connectivity with bridge crossing of Red Rock Creek	No	MID TERM: 5-15 years	MEDIUM - 1/2 million to 5 million	MID TERM: 5-15 years	
TI-40	Tigard Triangle Park	Create neighborhood park in underserved area of Tigard triangle	No	MID TERM: 5-15 years	MEDIUM - 1/2 million to 5 million	MID TERM: 5-15 years	1
TI-41	Acquire TDRs on Red Rock Creek	Purchase TDRS on Red Rock Creek for preservation of riparian corridor	No	MID TERM: 5-15 years	MEDIUM - 1/2 million to 5 million	MID TERM: 5-15 years	1
TI-42	Tigard Main Street Green Street	Provide new green street facilities on Main Street	No	MID TERM: 5-15 years	MEDIUM - 1/2 million to 5 million	MID TERM: 5-15 years	1
TI-43	Connection between Tigard Triangle and PCC-Sylvania	Provide pedestrian/bicycle connection between the Tigard Triangle area and PCC-Sylvania	No	MID TERM: 5-15 years	MEDIUM - 1/2 million to 5 million	MID TERM: 5-15 years	
TI-44	Complete Green Spines in Downtown	Provide "green" boulevards for downtown Tigard as planned in Fannon Creek Master Plan	No	MID TERM: 5-15 years	MEDIUM - 1/2 million to 5 million	MID TERM: 5-15 years	
TI-45	Open Space/Park development in Washington Square	Provide additional open space or neighborhood park in Washington Square	No	MID TERM: 5-15 years	MEDIUM - 1/2 million to 5 million	MID TERM: 5-15 years	1
TI-46	Pedestrian Crossing /Sky Bridge over I-5 at Ash Creek	Provide sky bridge pedestrian/bicycle crossing over Interstate 5 at Ash Creek	No	MID TERM: 5-15 years	HIGH - 5 million and up	MID TERM: 5-15 years	
TI-47	Washington Square Greenbelt	The Washington Square Regional Center Plan - September 1999 established a plan for an interconnected open space system and a green belt around the center that would potentially add property value and attract quality developments that ultimately will create a great place to live and work for the region.	No	MID TERM: 5-15 years	MEDIUM - 1/2 million to 5 million	MID TERM: 5-15 years	
TI-48	Remove Fish Barrier	Remove unnamed culvert ODFW ID #11. Unknown passage status. Barrier subtype is 'full box.'	No	MID TERM: 5-15 years	MEDIUM - 1/2 million to 5 million	MID TERM: 5-15 years	

DRAFT STEERING COMMITTEE RECOMMENDATION (continued)

Southwest Corridor: Parks, Natural Areas and Environmental Restoration Projects -7/1/13

Jurisdiction and project number	Project Title /Location	Project Description	Funding	Funding Timing	Estimated Cost	Recommendation	Jurisdictional Priorities
TI-49	Remove Fish Barrier	Remove unnamed culvert ODFW ID #12. Unknown passage status. Barrier subtype is 'round.' Owner is ODOT. Culvert assessment by ODFW staff (1996-1999) using guidelines and criteria to determine fish passage. Comments include, "1 mile from I-5. Double culvert (24" x 2) Steps fall 2' over 5' long cascade. Initial steps are 16" and 12". Subterranean above. Below runs alongside of large pond. Listed as irrigation ditch in straight-line chart."	No	MID TERM: 5-15 years	MEDIUM - 1/2 million to 5 million	MID TERM: 5-15 years	
TI-50	Remove Fish Barrier	Remove unnamed culvert ODFW ID #13. Unknown passage status. Barrier subtype is 'round.' Owner is ODOT. Culvert assessment by ODFW staff (1996-1999) using guidelines and criteria to determine fish passage. Comments include, "1 mile from I-5. Double culvert (24" x 2) Steps fall 2' over 5' long cascade. Initial steps are 16" and 12". Subterranean above. Below runs alongside of large pond. Listed as irrigation ditch in straight-line chart."	No	MID TERM: 5-15 years	MEDIUM - 1/2 million to 5 million	MID TERM: 5-15 years	
TI-51	Remove Fish Barrier	Remove Stark Reservoir ODFW ID #14 over unnamed stream. Barrier subtype is 'permanent dam.' Owner is Herbert & Roth Stark.	No	MID TERM: 5-15 years	MEDIUM - 1/2 million to 5 million	MID TERM: 5-15 years	
TI-52	Remove Fish Barrier	Remove unnamed culvert ODFW ID #17 on Ash Creek. Barrier subtype is 'round.' Unknown passage status. Comments include, "historic St. presence above culvert on Ash Creek."	No	MID TERM: 5-15 years	MEDIUM - 1/2 million to 5 million	MID TERM: 5-15 years	
TI-53	Remove Fish Barrier	Remove unnamed culvert ODFW ID #18. Passable passage status. Owner is ODOT. Culvert assessment by ODFW staff (1996-1999) using guidelines and criteria to determine fish passage. Not in straight-line chart.	No	MID TERM: 5-15 years	MEDIUM - 1/2 million to 5 million	MID TERM: 5-15 years	
TI-54	Remove Fish Barrier	Remove unnamed culvert ODFW ID #20 on Ash Creek. Partially blocked passage status. Professional judgment used to evaluate culvert. Comments include, "step ht=0.4m; old irr dam."	No	MID TERM: 5-15 years	MEDIUM - 1/2 million to 5 million	MID TERM: 5-15 years	
TI-55	Remove Fish Barrier	Remove unnamed culvert ODFW ID #21 on Ash Creek. Barrier subtype is 'round.' Owner is ODOT. Passable passage status. Culvert assessment by ODFW staff (1996-1999) using guidelines and criteria to determine fish passage. Labeled as "Hedges Cr" on road.	No	MID TERM: 5-15 years	MEDIUM - 1/2 million to 5 million	MID TERM: 5-15 years	
TI-56	Remove Fish Barrier	Remove unnamed culvert on ODFW ID #22 on Ash Creek. Barrier subtype is 'full box.'	No	MID TERM: 5-15 years	MEDIUM - 1/2 million to 5 million	MID TERM: 5-15 years	
TI-57	Remove Fish Barrier	Remove unnamed dam on ODFW ID #28 on South Fork Ash Creek. Partially blocked passage status. Professional judgment used to evaluate dam. Comments include, "step ht=0.8m; backyard dam."	No	MID TERM: 5-15 years	MEDIUM - 1/2 million to 5 million	MID TERM: 5-15 years	
TI-58	Remove Fish Barrier	Remove unnamed culvert on ODFW ID #30 on South Fork Ash Creek. Blocked passage status. Professional judgment used to evaluate culvert on SW Ventura Dr.	No	MID TERM: 5-15 years	MEDIUM - 1/2 million to 5 million	MID TERM: 5-15 years	
TI-59	Remove Fish Barrier	Remove unnamed culvert on ODFW ID #32 on South Fork Ash Creek. Passable passage status. Professional judgment used to evaluate culvert. Comments include, "T=12.0C path; county boundary."	No	MID TERM: 5-15 years	MEDIUM - 1/2 million to 5 million	MID TERM: 5-15 years	
TI-60	Remove Fish Barrier	Remove unnamed culvert on ODFW ID #35 on South Fork Ash Creek. Barrier subtype is 'round.' Professional judgment used to evaluate culvert. Comments include, "1.0m concrete no drop."	No	MID TERM: 5-15 years	MEDIUM - 1/2 million to 5 million	MID TERM: 5-15 years	
TI-61	Remove Fish Barrier	Remove unnamed culvert on ODFW ID #36 on South Fork Ash Creek. Barrier subtype is 'round.' Professional judgment used to evaluate culvert. Comments include, "1.0m concrete no drop."	No	MID TERM: 5-15 years	MEDIUM - 1/2 million to 5 million	MID TERM: 5-15 years	

DRAFT STEERING COMMITTEE RECOMMENDATION (continued)

Southwest Corridor: Parks, Natural Areas and Environmental Restoration Projects -7/1/13

Jurisdiction and project number	Project Title /Location	Project Description	Funding	Funding Timing	Estimated Cost	Recommendation	Jurisdictional Priorities
TI-200	Fanno Creek Corridor Fields Property	Master plan, design and construction of a natural areas park at the Fields Property.	No			SHORT TERM: 0-5 years	
CITY OF TUALATIN							
TU-1	Ice Age Tonquin Trail	Land use, acquisition, and trail development, also Tigard, King City, Durham and Washington County	No	LONG TERM: Beyond 15 years	HIGH - 5 million and up	LONG TERM: Beyond 15 years	
TU-2	Westside Trail	New bike/ped bridge over the Tualatin River. Could be a joint effort with the Willamette River Water consortium.	No	MID TERM: 5-15 years	HIGH - 5 million and up	MID TERM: 5-15 years	
TU-3	Tualatin National Wildlife Refuge Trail Connection	Complete linkage to create connection to Tualatin National Wildlife Refuge	No	LONG TERM: Beyond 15 years	MEDIUM - 1/2 million to 5 million	LONG TERM: Beyond 15 years	
TU-4	Tualatin River Greenway	Land acquisition and path development, West and east of I5, extending past 99W to the Westside Trail, desire for more acquisition and larger setbacks	No	LONG TERM: Beyond 15 years	HIGH - 5 million and up	LONG TERM: Beyond 15 years	1
TU-5	Tualatin River Water Trail	Development Tualatin River Water Trail within Tualatin	No	MID TERM: 5-15 years	HIGH - 5 million and up	MID TERM: 5-15 years	
TU-6	Hedges Creek Wetland Area	Trail easement needed along private properties east of Myslony St. to Pazcuzzi Pond. East of Pazcuzzi pond there are approx. 30 acres in Tualatin ownership and rest in Wetlands Conservancy ownership. Trail route to follow CWS Cipole Trunk Sewer easement. Easements needed east of 90th Avenue to where built section of trail exists.	No	LONG TERM: Beyond 15 years	HIGH - 5 million and up	LONG TERM: Beyond 15 years	
TU-7	Fanno Creek Trail	Improve riparian corridor and complete spur connections	No	LONG TERM: Beyond 15 years	MEDIUM - 1/2 million to 5 million	LONG TERM: Beyond 15 years	
TU-8	Tonquin Trail Connection to WES	Connect Tonquin Trail, Tualatin River Greenway and Hedges Creek Wetlands to WES Station	No	LONG TERM: Beyond 15 years	MEDIUM - 1/2 million to 5 million	LONG TERM: Beyond 15 years	
TU-9	Koller Wetlands and Ponds	Purchase trail easement from landowners to west of railroad tracks so that future trail users will have views of Koller Wetlands and ponds. Purchase perched wetland (Kolk pond) on top of bedrock. Tonquin Trail likely built after this area annexed by Tualatin.	Yes	SHORT TERM: 0-5 years; 2012	MEDIUM - 1/2 million to 5 million	SHORT TERM: 0-5 years	
TU-10	Nyberg Creek Greenway	Land acquisition and path development. Connecting east and west of I5 then north and south to Hwy 99 to I5 bikeway (south) and Tualatin River Greenway (north)	No	LONG TERM: Beyond 15 years	MEDIUM - 1/2 million to 5 million	LONG TERM: Beyond 15 years	1
TU-11	Moran Property	Tonquin Trail trailhead, river access and bike/pedestrian bridge over Tualatin River on Metro owned land. Ongoing DEQ monitored clean-up of oil-contaminated soil. Tonquin Trail will connect to built section of Tualatin River Greenway to east of Moran. Metro and TRNWR have IGA for natural resource restoration work that the Refuge conducts on Metro land.	Yes	LONG TERM: Beyond 15 years	MEDIUM - 1/2 million to 5 million	LONG TERM: Beyond 15 years	
TU-12	99W Parallel Path	Off Street route parallel to 99W	No	LONG TERM: Beyond 15 years	MEDIUM - 1/2 million to 5 million	LONG TERM: Beyond 15 years	1

DRAFT STEERING COMMITTEE RECOMMENDATION (continued)

Southwest Corridor: Parks, Natural Areas and Environmental Restoration Projects -7/1/13

DISCUSSION DRAFT, July 1, 2013

Jurisdiction and project number	Project Title /Location	Project Description	Funding	Funding Timing	Estimated Cost	Recommendation	Jurisdictional Priorities
TU-13	Koik Property - Kohler Wetland	Perched wetland on top of bedrock desirable for acquisition and protection	No	LONG TERM: Beyond 15 years	MEDIUM - 1/2 million to 5 million	LONG TERM: Beyond 15 years	
TU-14	Ice Age Discovery Trail	Overlap NPS Ice Age Discovery Trail with Tualatin portion of the Tonquin Trail. Incorporate NPS Ice Age Marketing Plan, Ice Age Visitor Plan, Historical Society and Chamber support.	No	MID TERM: 5-15 years	MEDIUM - 1/2 million to 5 million	MID TERM: 5-15 years	1
TU-15	Nyberg Undercrossing at I-5	Provide pedestrian/bicycle connection under the intersection of Nyberg and Interstate 5	No	LONG TERM: Beyond 15 years	MEDIUM - 1/2 million to 5 million	LONG TERM: Beyond 15 years	1
TU-16	Parallel Facility to I-5	Land use, acquisition and path development. Provide a safe parallel pedestrian/bicycle facility parallel to Interstate 5	No	LONG TERM: Beyond 15 years	HIGH - 5 million and up	LONG TERM: Beyond 15 years	1
TU-17	Wildlife Corridor south of the Tualatin River	Address fragmented wildlife corridors by installing a diverse mix of site-appropriate herbs, trees and shrubs to the extent that there are not significant gaps in tree cover. Maximize the width of the vegetated corridor. Create occasional meadows but not at the expense of leaving a gap in tree cover connection along the corridor. Stabilize soil erosion using bioengineering practices.	No	LONG TERM: Beyond 15 years	MEDIUM - 1/2 million to 5 million	LONG TERM: Beyond 15 years	
TU-18	Brown's Ferry Park Barn: Master Plan	A Master Plan for the renovation of the barn at Brown's Ferry Park will identify improvements to be made to the historic structure so that it is safe for public use, to gain new utility from it as a three season picnic shelter and to preserve a historic feature of Tualatin's agrarian past.	Yes	SHORT TERM: 0-5 years; 2014-2015	LOW - Under 1/2 million	SHORT TERM: 0-5 years	
TU-19	Brown's Ferry Park Com Ctr: Feasibility Study	The BFCC Feasibility Study will determine what improvements should be made to modernize the facility, maximize functionality, and prolong its useful life. The Feasibility Study will study ways to update technological systems, improve access, enhance health and safety conditions, reduce energy use, enlarge recreation program spaces, and improve inter-facility connectivity.	Yes	SHORT TERM: 0-5 years; 2014-2015	LOW - Under 1/2 million	SHORT TERM: 0-5 years	
TU-20	Tualatin River Greenway: Land Acquisition	Land is a basic ingredient of a park and recreation system, and as such the Parks and Recreation Master Plan emphasizes land acquisition as a major goal and, in particular land for riverfront parks. Additional riverfront park land will strengthen the Greenway as a recreational corridor by providing land for facilities (bikeways, docks, viewing areas) and improving public access to the river and serving as a focus for river related activities. Financial readiness for acquisition is of critical importance because once the land has been developed, it may never again be available for public ownership.	Yes	SHORT TERM: 0-5 years; 2012-2013, 2013-2014, 2014-2015, 2015-2016, 2016-2017	HIGH - 5 million and up	SHORT TERM: 0-5 years	
TU-21	Van Raden Com Ctr: Feasibility Study	Feasibility Study for Van Raden Community Center to define	Yes	SHORT TERM: 0-5 years; 2014-2015	LOW - Under 1/2 million	SHORT TERM: 0-5 years	
TU-22	Lafky Park: Playground/Swing set Replacement	Lafky Park is located at 9655 SW Siletz Drive, serving the residential neighborhoods in the south central areas of town. The existing playground structure is a wooden timber framed structure built in 1984. At the age of 27 years this structure is at the end of its life cycle, the swing set was removed from service (August 2011) as a result of a failure of the timber supports, the remaining structure is in similar decline. A complete removal and replacement with updated playground system is due.	Yes	SHORT TERM: 0-5 years; 2014-2015	LOW - Under 1/2 million	SHORT TERM: 0-5 years	
TU-23	Placeholder for additional project - Intentionally blank						
TU-24	Park targeted for acquisition /Tualatin River and 99W	Neighborhood park acquisition and development	No	MID TERM: 5-15 years	MEDIUM - 1/2 million to 5 million	MID TERM: 5-15 years	
TU-25	Connection of Tualatin River Greenway to Moran Property	Bike/ped facilities for connectivity	No	MID TERM: 5-15 years	MEDIUM - 1/2 million to 5 million	MID TERM: 5-15 years	

DRAFT STEERING COMMITTEE RECOMMENDATION (continued)

Southwest Corridor: Parks, Natural Areas and Environmental Restoration Projects -7/1/13

Jurisdiction and project number	Project Title /Location	Project Description	Funding	Funding Timing	Estimated Cost	Recommendation	Jurisdictional Priorities
CWS-1	Stormwater treatment and Floodplain reconnection of the Tualatin River watershed	LONG TERM PROGRAMMATIC Acquire developed flood plain properties and restore to riparian corridor for flood storage	No	LONG TERM: Beyond 15 years	HIGH - 5 million and up	LONG TERM: Beyond 15 years	
CWS-2	Fanno Creek Restoration	Hall Street to Durham Road, including Bonita Natural Areas	No	LONG TERM: Beyond 15 years	MEDIUM - 1/2 million to 5 million	LONG TERM: Beyond 15 years	
CWS-3	Ash Creek Wetland	Large existing wetland (approximately 30 ac) north of Hwy 217; used for grazing; opportunity for enhancement and floodplain storage; no current development plans; no funding identified for acquisition.	No	LONG TERM: Beyond 15 years	MEDIUM - 1/2 million to 5 million	LONG TERM: Beyond 15 years	
CWS-4	Restore riparian health	LONG TERM PROGRAMMATIC Property acquisition and restoring the flood plain. Change geomorphology conditions of streams as a long term strategy to address hydrology and hydraulics	No	LONG TERM: Beyond 15 years	HIGH - 5 million and up	LONG TERM: Beyond 15 years	
CWS-5	Restore riparian health	All open streams provide for riparian canopy to improve health and function	No	LONG TERM: Beyond 15 years	HIGH - 5 million and up	LONG TERM: Beyond 15 years	
CWS-6	Preserve existing forest	For ecosystem services including stormwater management	No	LONG TERM: Beyond 15 years	MEDIUM - 1/2 million to 5 million	LONG TERM: Beyond 15 years	
CWS-7	Hwy 99W Median Retrofit	Provide stormwater treatment using open space available in the Hwy 99W in Tigard/King City. Project partnered with ODOT and city of Tigard. Pre-design funded for FY2011-12. Design planned for FY2012-13 – future funding dependent on report	Yes	SHORT TERM: 0-5 years; 2011-2012, 2012, 2013	MEDIUM - 1/2 million to 5 million	SHORT TERM: 0-5 years	1
CWS-8	Fanno Creek Stormwater Basin Master Plan	Sub-basin watershed master plan to identify conveyance improvement, culvert replacement, facility/outfall retrofits, and water quality treatment challenges and opportunities for enhancement projects, Project funded for FY2013-14 no funding identified for potential solutions	Yes	SHORT TERM: 0-5 years; 2011-2012, 2012-2013	LOW - Under 1/2 million	SHORT TERM: 0-5 years	1
CWS-9	Stormwater Outfall and Facility Retrofits	Located throughout the SW Corridor; retrofit opportunities exist to address stormwater treatment and will be identified when alignment is selected.	Yes; Limited District Funding Available	SHORT TERM: 0-5 years	HIGH - 5 million and up	MID TERM: 5-15 years	
CWS-10	Hedges Creek and Wetland Enhancement	Should be coordinated with the City of Tualatin. When Tonquin Trail is constructed over CWS' Cipole Sanitary Trunk Sewer easement between Pazcuzzi Pond east to built sections of trail near Tualatin Police Station, opportunities will exist for habitat improvement, invasive species removal and native plantings. Also, opportunity to improve wildlife passage at culvert where trail will cross Teton Ave. Most of the wetlands are owned by Wetland Conservancy and City of Tualatin.	District will partner with Metro and City funding from partners	LONG TERM: Beyond 15 years	MEDIUM - 1/2 million to 5 million	LONG TERM: Beyond 15 years	
CWS-11	Fanno Creek Improvement - Downtown	Near City Hall – streambank stabilization and enhancement project. Most of the wetlands is owned by City of Tigard; no funding identified	Yes	SHORT TERM: 0-5 years	LOW - Under 1 million	LONG TERM: Beyond 15 years	1
CWS-13	Culvert Replacement	Located throughout the SW Corridor; opportunities exist to address fish passage and capacity and will be identified when the alignment is selected.	Yes; Limited District Funding Available	MID TERM: 5-15 years	MEDIUM - 1/2 million to 5 million	MID TERM: 5-15 years	

DRAFT STEERING COMMITTEE RECOMMENDATION (continued)

Southwest Corridor: Parks, Natural Areas and Environmental Restoration Projects -7/1/13

DISCUSSION DRAFT, July 1, 2013

Jurisdiction and project number	Project Title /Location	Project Description	Funding	Funding Timing	Estimated Cost	Recommendation	Jurisdictional Priorities
CWS-14	Cedar Creek Corridor	Local and regional trails being constructed (Tonquin Trail); potential impact on existing natural resources; opportunity for enhancing degraded corridor, including improving wildlife passage when new trail crossing built beneath highway 99. Wildlife passage improvements also recommended where Cedar Creek crosses beneath Eddy Road and Roy Rodgers Road when trail is built over road in these locations. Metro funded trail master plan; enhancement is not funded.	District will partner with Metro and City for trail; District does not have funding for this project	MID TERM: 5-15 years	MEDIUM - 1/2 million to 5 million	MID TERM: 5-15 years	
CWS -15	Deek Creek and Edgewater Subdivisions	Located in King City; presently being developed; opportunity for constructing a regional stormwater treatment facility exists	No	SHORT TERM: 0-5 years; 2012-2013	MEDIUM - 1/2 million to 5 million	SHORT TERM: 0-5 years	
CWS-17	Derry Dell at Walnut	This Project, in partnership with the City of Tigard, removes five exposed sewer crossings, adds 1,200 feet of sanitary sewer, and removes several manholes in the Woodard city park. Benefits include fish passage and streambank stabilization on 400-feet of Derry Dell Creek. Proposed schedule: Construction in summer of 2014.	Yes	SHORT TERM: 0-5 years; 2012-2013	MEDIUM - 1/2 million to 5 million	SHORT TERM: 0-5 years	
CWS-18	Fanno Interceptor Upgrade	Sanitary trunk upgrade that is located in the Fanno Creek Corridor, phased construction in FY2014-2018.	Yes	SHORT TERM: 0-5 years; 2012-2013	High: 5 million+	SHORT TERM: 0-5 years	1
CWS-19	Upper Tualatin Interceptor Upgrade	Sanitary trunk upgrade pending sanitary sewer model verification; located near Hwy 99W corridor	Yes	SHORT TERM: 0-5 years; 2012-2013	MEDIUM - 1/2 million to 5 million	SHORT TERM: 0-5 years	1
CWS-20	Onion Flat Trunk Sewer Upgrade	Sanitary trunk upgrade to support future industrial growth in Sherwood and Tualatin UGB; located south of Hwy 99W corridor. Opportunity to coordinate with acquisition and protection targeted by City of Sherwood in Project SH-12.	Yes	SHORT TERM: 0-5 years; 2012-2013	MEDIUM - 1/2 million to 5 million	SHORT TERM: 0-5 years	1
WASHINGTON COUNTY							
WA-1	Wildlife corridor between Ash Creek and Red Tail Golf Course	Address fragmented wildlife corridors by installing a diverse mix of site-appropriate herbs, trees and shrubs to the extent that there are not significant gaps in tree cover. Maximize the width of the vegetated corridor. Create occasional meadows but not at the expense of leaving a gap in tree cover connection along the corridor. Stabilize soil erosion using bioengineering practices.	No	LONG TERM: Beyond 15 years	MEDIUM - 1/2 million to 5 million	LONG TERM: Beyond 15 years	
WA-3	Interim Tonquin Trail	Interim Tonquin Trail to serve connectivity needs while overall trail is acquired and developed.	No	MID TERM: 5-15 years	MEDIUM - 1/2 million to 5 million	MID TERM: 5-15 years	
WA-4	Remove Fish Barrier	Remove unnamed culvert ODFW ID #5 on Cedar Creek. Owner is Washington County. Passable passage status. Culvert assessment by ODFW staff (1996-1999) using guidelines and criteria to determine fish passage. Comments include, "0.5 miles east of Elwert Rd."	No	MID TERM: 5-15 years	MEDIUM - 1/2 million to 5 million	MID TERM: 5-15 years	
WA-5	Remove Fish Barrier	Remove Tualatin Refuge Dam ODFW ID #6. Owner is USFWS. Barrier subtype is a permanent dam.	No	MID TERM: 5-15 years	MEDIUM - 1/2 million to 5 million	MID TERM: 5-15 years	
WA-6	Remove Fish Barrier	Remove unnamed culvert ODFW ID #16 on Summer Creek. Passable passage status. Owner is ODOT. Culvert assessment by ODFW staff (1996-1999) using guidelines and criteria to determine fish passage.	No	MID TERM: 5-15 years	MEDIUM - 1/2 million to 5 million	MID TERM: 5-15 years	Tualatin River Wildlife Refuge priority
WA-7	Remove Fish Barrier	Remove unnamed barrier ODFW ID #19. Passage status unknown. Barrier type not indicated on map.	No	MID TERM: 5-15 years	MEDIUM - 1/2 million to 5 million	MID TERM: 5-15 years	

DRAFT STEERING COMMITTEE RECOMMENDATION (continued)

Southwest Corridor: Parks, Natural Areas and Environmental Restoration Projects -7/1/13

Jurisdiction and project number	Project Title /Location	Project Description	Funding	Funding Timing	Estimated Cost	Recommendation	Jurisdictional Priorities
WA-8	Remove Fish Barrier	Remove unnamed culvert ODFW ID #23 on Ash Creek. Barrier subtype 'full box.'	No	MID TERM: 5-15 years	MEDIUM - 1/2 million to 5 million	MID TERM: 5-15 years	
WA-9	Remove Fish Barrier	Remove unnamed culvert ODFW ID #25 on Ash Creek. Passable passage status. Barrier subtype 'full box.' Professional judgment used to evaluate culvert on SW Locust. It is 1.5m box culvert.	No	MID TERM: 5-15 years	MEDIUM - 1/2 million to 5 million	MID TERM: 5-15 years	
WA-10	Remove Fish Barrier	Remove unnamed culvert ODFW ID #37 on Ash Creek. Barrier subtype 'round.' Passable passage status. Professional judgment used to evaluate culvert on SW 80th. It is 1.9m concrete, with no drop.	No	MID TERM: 5-15 years	MEDIUM - 1/2 million to 5 million	MID TERM: 5-15 years	
WA-11	Remove Fish Barrier	Remove unnamed culvert ODFW ID #38 on South Fork Ash Creek. Passable passage status. Barrier subtype is 'round.' Professional judgment used to evaluate culvert at SW 80th. It is 1.5m metal, with no drop.	No	MID TERM: 5-15 years	MEDIUM - 1/2 million to 5 million	MID TERM: 5-15 years	
WA-12	Remove Fish Barrier	Remove unnamed culvert ODFW ID #39 on South Fork Ash Creek. Passable passage status. Barrier subtype is 'round.' Professional judgment used to evaluate culvert. It is at a private driveway and is 0.9m concrete.	No	MID TERM: 5-15 years	MEDIUM - 1/2 million to 5 million	MID TERM: 5-15 years	
WA-13	Remove Fish Barrier	Remove unnamed culvert ODFW ID #40 on South Fork Ash Creek. Passable passage status. Barrier subtype is 'round.' Professional judgment used to evaluate culvert at SW 82nd. It is 1.5m metal with no drop.	No	MID TERM: 5-15 years	MEDIUM - 1/2 million to 5 million	MID TERM: 5-15 years	
WA-14	Remove Fish Barrier	Remove unnamed culvert ODFW ID #41 on South Fork Ash Creek. Passable passage status. Barrier subtype is 'round.' Professional judgment used to evaluate culvert at SW 82nd. It is 1.5m metal with no drop.	No	MID TERM: 5-15 years	MEDIUM - 1/2 million to 5 million	MID TERM: 5-15 years	
WA-15	Remove Fish Barrier	Remove unnamed culvert ODFW ID #42 on Ash Creek. Passable passage status. Barrier subtype is 'round.' Professional judgment used to evaluate culvert. It is 1.7m metal, at a private driveway.	No	MID TERM: 5-15 years	MEDIUM - 1/2 million to 5 million	MID TERM: 5-15 years	
WA-16	Remove Fish Barrier	Remove unnamed culvert ODFW ID #43 on Ash Creek. Passable passage status. Barrier subtype is 'round.' Professional judgment used to evaluate culvert. It is 1.7m metal, at a private driveway.	No	MID TERM: 5-15 years	MEDIUM - 1/2 million to 5 million	MID TERM: 5-15 years	
WA-17	Remove Fish Barrier	Remove unnamed culvert ODFW ID #44 on Ash Creek. Passable passage status. Barrier subtype is 'round.' Professional judgment used to evaluate culvert. It is 1.7m metal, at a private driveway.	No	MID TERM: 5-15 years	MEDIUM - 1/2 million to 5 million	MID TERM: 5-15 years	
WA-18	Remove Fish Barrier	Remove unnamed dam ODFW ID #45 on Ash Creek. Comments include, "concrete structure 'slide' to damn pond."	No	MID TERM: 5-15 years	MEDIUM - 1/2 million to 5 million	MID TERM: 5-15 years	
WA-19	Remove Fish Barrier	Remove unnamed culvert ODFW ID #47 on Ash Creek. Passable passage status. Barrier subtype is 'round.' Professional judgment used to evaluate culvert at SW Cedarcrest. It is 1.5m metal.	No	MID TERM: 5-15 years	MEDIUM - 1/2 million to 5 million	MID TERM: 5-15 years	
WA-20	Remove Fish Barrier	Remove unnamed culvert ODFW ID #52 on Ash Creek. Partially blocked passage status. Barrier subtype is 'round.' Professional judgment used to evaluate culvert at SW 80th. It is 0.9m concrete.	No	MID TERM: 5-15 years	MEDIUM - 1/2 million to 5 million	MID TERM: 5-15 years	
WA-21	Remove Fish Barrier	Remove unnamed culvert ODFW ID #53 on Ash Creek. Partially blocked passage status. Barrier subtype is 'round.' Professional judgment used to evaluate culvert at SW 80th. It is 0.9m concrete.	No	MID TERM: 5-15 years	MEDIUM - 1/2 million to 5 million	MID TERM: 5-15 years	

DRAFT STEERING COMMITTEE RECOMMENDATION (continued)

Southwest Corridor: Parks, Natural Areas and Environmental Restoration Projects -7/1/13

Jurisdiction and project number	Project Title /Location	Project Description	Funding	Funding Timing	Estimated Cost	Recommendation	Jurisdictional Priorities
WA-22	Remove Fish Barrier	Remove unnamed culvert ODFW ID #55 on Ash Creek. Passable passage status. Barrier subtype is 'unknown.' Professional judgment used to evaluate culvert. It is at a private driveway.	No	MID TERM: 5-15 years	MEDIUM - 1/2 million to 5 million	MID TERM: 5-15 years	
WA-23	Remove Fish Barrier	Remove unnamed culvert ODFW ID #56 on Ash Creek. Passable passage status. Barrier subtype is 'round.' Professional judgment used to evaluate culvert at SW 74th. It is 1.0m concrete.	No	MID TERM: 5-15 years	MEDIUM - 1/2 million to 5 million	MID TERM: 5-15 years	
WA-24	Remove Fish Barrier	Remove unnamed culvert ODFW ID #57 on Ash Creek. Passable passage status. Barrier subtype is 'round.' Professional judgment used to evaluate culvert at SW 74th. It is 1.0m concrete.	No	MID TERM: 5-15 years	MEDIUM - 1/2 million to 5 million	MID TERM: 5-15 years	
WA-25	Remove Fish Barrier	Remove unnamed culvert ODFW ID #61 on Ash Creek. Passable passage status. Barrier subtype is 'unknown.' Professional judgment used to evaluate culvert at an old driveway - not used anymore.	No	MID TERM: 5-15 years	MEDIUM - 1/2 million to 5 million	MID TERM: 5-15 years	
CITY OF SHERWOOD							
SH-1	Cedar Creek Trail	Provide pedestrian/bike connection	No	LONG TERM: Beyond 15 years	MEDIUM - 1/2 million to 5 million	LONG TERM: Beyond 15 years	
SH-2	Tonquin Trail	Oregon Street/Tonquin Road intersection to Roy Rodgers Road.	Yes	SHORT TERM: 0-5 years; 2013-2014	MEDIUM - 1/2 million to 5 million	SHORT TERM: 0-5 years	
SH-3	99W culvert underpass	Provide pedestrian/bike connection	No	MID TERM: 5-15 years	MEDIUM - 1/2 million to 5 million	MID TERM: 5-15 years	
SH-4	Adams Park north	Acquire and develop neighborhood park	No	MID TERM: 5-15 years	MEDIUM - 1/2 million to 5 million	MID TERM: 5-15 years	
SH-5	Complete the Trail System	Complete the Trail System and Connect the Community	No	Ongoing	HIGH - 5 million and up	Ongoing	
SH-7	Design and Construct a Skatepark	Acquire and develop skate park	No	LONG TERM: Beyond 15 years	LOW - Under 1/2 million	LONG TERM: Beyond 15 years	
SH-8	Bike Ped Bridge Crossing of Railroad tracks	Provide safe pedestrian/bike crossing of train tracks	No	LONG TERM: Beyond 15 years	HIGH - 5 million and up	LONG TERM: Beyond 15 years	
SH-9	Town Center Plan - Open Space	Acquire and develop open space	No	MID TERM: 5-15 years	MEDIUM - 1/2 million to 5 million	MID TERM: 5-15 years	
SH-10	Tannery Site	Acquire and develop	No	MID TERM: 5-15 years	MEDIUM - 1/2 million to 5 million	MID TERM: 5-15 years	
SH-11	Roundabout Development	Set aside remnant land from transportation project for construction of a roundabout and a park or open space.	No	MID TERM: 5-15 years	LOW - Under 1/2 million	MID TERM: 5-15 years	
Sh: 12	Chicken Creek Watershed	Acquisition opportunities for watershed protection	No	MID TERM: 5-15 years	MEDIUM - 1/2 million to 5 million	MID TERM: 5-15 years	
SH-13	Stella Olsen Park	Improve Amphitheater in Stella Olsen Park, wetland improvements - Address fragmented wildlife corridors by installing a diverse mix of site-appropriate herbs, trees and shrubs to the extent that there are not significant gaps in tree cover. Maximize the width of the vegetated corridor. Create occasional meadows but not at the expense of leaving a gap in tree cover connection along the corridor. Stabilize soil erosion using bioengineering practices.	No	MID TERM: 5-15 years	LOW - Under 1/2 million	MID TERM: 5-15 years	1
SH-14	BPA and PGE Line Easements	Trail opportunities within easements of BPA and PGE for connectivity	No	MID TERM: 5-15 years	MEDIUM - 1/2 million to 5 million	MID TERM: 5-15 years	
SH-15	Floodplain Improvements north of Sunset Boulevard	Address fragmented wildlife corridors by installing a diverse mix of site-appropriate herbs, trees and shrubs to the extent that there are not significant gaps in tree cover. Maximize the width of the vegetated corridor. Create occasional meadows but not at the expense of leaving a gap in tree cover connection along the corridor. Stabilize soil erosion using bioengineering practices. Excavate to connect isolated floodplains and to create additional floodplain areas terraces adjacent to streams. Plant the terraces with a diverse mix of site appropriate herbs, trees and shrubs. Grade the terraces to prevent fish entrapment when flood water levels decrease.	No	LONG TERM: Beyond 15 years	MEDIUM - 1/2 million to 5 million	LONG TERM: Beyond 15 years	1

DRAFT STEERING COMMITTEE RECOMMENDATION (continued)

Southwest Corridor: Parks, Natural Areas and Environmental Restoration Projects -7/1/13

Jurisdiction and project number	Project Title /Location	Project Description	Funding	Funding Timing	Estimated Cost	Recommendation	Jurisdictional Priorities
SH-16	Chicken Creek (Elwort and Edy Intersection)	Address fragmented wildlife corridors by installing a diverse mix of site-appropriate herbs, trees and shrubs to the extent that there are not significant gaps in tree cover. Maximize the width of the vegetated corridor. Create occasional meadows but not at the expense of leaving a gap in tree cover connection along the corridor. Stabilize soil erosion using bioengineering practices. Excavate to connect isolated floodplains and to create additional floodplain areas terraces adjacent to streams. Plant the terraces with a diverse mix of site appropriate herbs, trees and shrubs. Grade the terraces to prevent fish entrapment when flood water levels decrease.	No	LONG TERM: Beyond 15 years	MEDIUM - 1/2 million to 5 million	LONG TERM: Beyond 15 years	1
SH-17	Remove Fish Barrier	Remove unnamed culvert ODFW ID #1 on Cedar Creek. Passable passage status. Owner is Washington County. Culvert assessment by ODFW staff (1996-1999) using guidelines and criteria to determine fish passage. Culvert is 0.4 miles west of Parrot Mt. Rd.	No	MID TERM: 5-15 years	MEDIUM - 1/2 million to 5 million	MID TERM: 5-15 years	

TUALATIN HILLS PARKS AND RECREATION DISTRICT

TH-1	SW Community Park	This project will be the development of a brand new Community Park in THPRD's southwest quadrant. Project amenities have yet to be determined, but may include athletic fields, picnic areas, play equipment, pathways, or community gardens. More details will become available as project start-up approaches.	Yes	SHORT TERM: 0-5 years; 2012-2016	HIGH - 5 million and up; 7.5 million	SHORT TERM: 0-5 years	
TH-2	Vista Brook Park	Master planning for Vista Brook Park began in fall 2010. Renovations will include pathways, play equipment, picnic areas, basketball court upgrades, parking improvements, landscape plantings and natural area restoration.	Yes	SHORT TERM: 0-5 years; 2013	LOW - Under 1/2 million; 500000.00	SHORT TERM: 0-5 years	
TH-3	Fanno Creek Park	The Natural Resources Department will conduct extensive weed treatment and intensive tree/shrub plantings to provide shade and habitat diversity at the 20-acre Fanno Creek Park. A study site for creek and water flow improvements will also be incorporated	Yes	SHORT TERM: 0-5 years; 2013-2014	LOW: Under 1/2 million; 158000.00	SHORT TERM: 0-5 years	
TH-4	Lowami Hart Woods	The Natural Resources Department will be completing a large-scale removal of non-native weeds then replanting with native plants and/or shrubs. During this process, the Natural Resources Department will be re-routing and/or closing illegal trails. The 27.75-acre park is predominantly forested with a sloping terrain. A section of South Johnson Creek flows through the park from south to north. Tributary streams and wetlands also exist on-site. The 2001 master plan calls for trails through the natural area, with a main trail segment planned to be part of the future South Johnson Creek Community Trail. Other master plan amenities include a small parking lot with adjacent picnic areas and informational kiosk, an informal central gathering area for environmental education of small groups, and new pedestrian bridges.	Yes	SHORT TERM: 0-5 years; 2010-2015	MEDIUM - 1/2 million to 5 million	SHORT TERM: 0-5 years	
TH-5	Vista Brook Park	The Natural Resources Department will be enhancing the natural area by removing non-native plants. They will then replant with native trees and shrubs after the park development occurs. In order to further preserve habitats, this project will likely enhance pond edges and potentially add basking logs for wildlife.	Yes	SHORT TERM: 0-5 years; 2011-2012	LOW - Under 1/2 million; 20,600.00	SHORT TERM: 0-5 years	
TH-6	Westside Trail - Segment no. 1 (Barrows Rd to Scholls Ferry Road)	(Barrows Rd to Scholls Ferry Road) of the Westside Trail is a 0.39-mile-long trail that will begin at the Tigard city limits at Barrows Road, connecting the east/west Summercreek Community Trail then continuing north toward Scholls Ferry Road. Along with the initial benefit of connecting multiple regional and community trails, this trail will also allow easy access for local patrons to the Murray-Scholls Town Center area.	Yes	SHORT TERM: 0-5 years; 2009-2013	MEDIUM - 1/2 million to 5 million; 4,150,000	SHORT TERM: 0-5 years	
TH-7	Westside Trail - Segment no. 4 (Galena Way to Rigert Road)	(Galena Way to Rigert Road) of the Westside Trail will connect Galena Way to Rigert Road. After completion, this segment will connect 3.32 miles of the Westside Trail.	Yes	SHORT TERM: 0-5 years; 2009-2013	HIGH - 5 million and up	SHORT TERM: 0-5 years	
TH-8	Westside Trail - Segment no. 7 (Mt. Williams-Burntwood Way to Davis Road)	(Mt. Williams-Burntwood Way to Davis Road) of the Westside Trail will connect Burntwood Way to Davis Road over the Mount Williams parcel. This is a partnership project with the city of Beaverton and is a very challenging segment due to steep topography and existing natural resources (trees). Westside Trail -	Yes	SHORT TERM: 0-5 years; 2009-2013	HIGH - 5 million and up	SHORT TERM: 0-5 years	

CITY OF LAKE OSWEGO

LO-2	Surf to Turf Trail	Develop Surf to Turf Trail that is planned to connect Fanno Creek Trail and the Tonquin Trail by following the Pacific and Western Railroad alignment.	No	MID TERM: 5-15 years	HIGH - 5 million and up	MID TERM: 5-15 years	
LO-3	Create children's nature play areas	Develop areas for children's play/nature play	No	SHORT TERM: 0-5 years; 2012-2017	LOW - Under 1/2 million	SHORT TERM: 0-5 years	
LO-4	Opportunities to be close to nature	Create opportunities to be close to nature	No	SHORT TERM: 0-5 years; 2012-2017	LOW - Under 1/2 million	SHORT TERM: 0-5 years	
LO-5	Opportunities for connectivity	Promote opportunities for connectivity	No	Ongoing	MEDIUM - 1/2 million to 5 million	Ongoing	
LO-6	Acquire park/natural resource lands	Acquire park/natural resource lands (over 30 acres)	No	Ongoing	HIGH - 5 million and up	Ongoing	

DRAFT STEERING COMMITTEE RECOMMENDATION (continued)

Southwest Corridor: Parks, Natural Areas and Environmental Restoration Projects -7/1/13

Jurisdiction and project number	Project Title /Location	Project Description	Funding	Funding Timing	Estimated Cost	Recommendation	Jurisdictional Priorities
LO-7	Remove Fish Barrier	Remove unnamed culvert ODFW ID #7 on Ball Creek. Unknown passage status. Barrier subtype is 'full box.'	No	MID TERM: 5-15 years	MEDIUM - 1/2 million to 5 million	MID TERM: 5-15 years	
LO-8	Remove Fish Barrier	Remove unnamed culvert ODFW ID #8 on Ball Creek. Unknown passage status. Barrier subtype is 'round.'	No	MID TERM: 5-15 years	MEDIUM - 1/2 million to 5 million	MID TERM: 5-15 years	
LO-9	Remove Fish Barrier	Remove unnamed culvert ODFW ID #9 on Ball Creek. Unknown passage status. Barrier subtype is 'round.'	No	MID TERM: 5-15 years	MEDIUM - 1/2 million to 5 million	MID TERM: 5-15 years	
LO-10	Remove Fish Barrier	Remove unnamed culvert ODFW ID #10. Unknown passage status. Barrier subtype is 'round.'	No	MID TERM: 5-15 years	MEDIUM - 1/2 million to 5 million	MID TERM: 5-15 years	
OREGON DEPARTMENT OF FISH AND WILDLIFE							
ODFW -1	Protect native turtle populations	Implement OCS strategies to protect the Western Painted and Western Pond turtle that remain in planning area. Focus on breeding populations by creating Turtle Conservation Areas to provide strongholds for source populations to sustain populations into the future as development continues. Take actions that support TCA's (connectivity, acquisition, adjacent upland acquisition, safe road crossings, protections, etc.).	No	Ongoing	HIGH - 5 million and up	Ongoing	
ODFW -2	Guidelines for trails outside of habitat areas	Delineate areas where trails may not be appropriate in order to protect wildlife populations into the future while still providing trails/transportation connectivity and green space experiences.	No	Ongoing	LOW - Under 1/2 million	Ongoing	
ODFW -3	Identify valuable uplands	Identify uplands prior to development in expanding UGB that would be appropriate for a trail in order to avoid unnecessary impact to sensitive resources/wildlife. Preserving greenspace in uplands that trails can run through will get away from relying too heavily on riparian areas for trail connectivity and nature trails.	No	Ongoing	LOW - Under 1/2 million	Ongoing	
ODFW -4	Create cap for linear feet of trail	Create cap for linear feet of trail (any trail-city, parks, or Metro) per acre, per square mile, or percent of total Creek length.	No	Ongoing	LOW - Under 1/2 million	Ongoing	
ODFW -5	Support Heritage Tree Program	Create greater participation/incentive for heritage tree program at Metro level and/or City level.	No	Ongoing	MEDIUM - 1/2 million to 5 million	Ongoing	
ODFW -6	Guidelines for commuter trails	Create guidelines that help identify where federally funded commuter trails (16-20 foot wide asphalt trails) are and are not appropriate for ecosystem health and function.	No	Ongoing	LOW - Under 1/2 million	Ongoing	
ODFW -7	Incentivize maintaining riparian buffer	Encroachment of buffers across city entities is a large and unenforced issue. Incentivize maintaining riparian buffer on private property.	No	Ongoing	LOW - Under 1/2 million	Ongoing	
ODFW -8	Protect properties along the Tualatin River	Prioritize acquisition/protection of properties along the Tualatin to Willamette via Rock Creek/Coffee Lake Creek Wildlife Corridor.	No	Ongoing	HIGH - 5 million and up	Ongoing	
ODFW -9	Create Oak Conservation Areas	Identify and create Oak Conservation Areas (OCS strategy habitat). Prioritize parcels 10 acres+ for protection acquisition. Incentivize oak (single tree or group) preservation on private property.	No	Ongoing	HIGH - 5 million and up	Ongoing	
TUALATIN RIVER NATIONAL WILDLIFE REFUGE							
TRNWR - 1	Additional turn-out lanes on 99W	Acceleration/deceleration lanes on HWY 99 at Refuge entry are needed, very dangerous coming to visitor's center, especially from the south.	No	MID TERM: 5-15 years	MEDIUM - 1/2 million to 5 million	MID TERM: 5-15 years	
TRNWR - 2	Restoration of Rock Creek	Restore Rock Creek to its meandering channel and improve hydrology.	No	MID TERM: 5-15 years	MEDIUM - 1/2 million to 5 million	MID TERM: 5-15 years	
TRNWR - 4	Improve Bus Access to TNWR	#12 Bus Service to Refuge is needed to maintain and expand service. There are current bus stop issues at this location. A safe crossing or dedicated stopping lane is needed with a bus shelter.	No	MID TERM: 5-15 years	MEDIUM - 1/2 million to 5 million	MID TERM: 5-15 years	
TRNWR - 5	Develop Tonquin Trail and 99W to TNWR	Develop biking and walking access to TNWR along 99W from Tualatin.	No	MID TERM: 5-15 years	LOW - Under 1/2 million	MID TERM: 5-15 years	

DRAFT STEERING COMMITTEE RECOMMENDATION (continued)

Southwest Corridor: Parks, Natural Areas and Environmental Restoration Projects -7/1/13

Jurisdiction and project number	Project Title /Location	Project Description	Funding	Funding Timing	Estimated Cost	Recommendation	Jurisdictional Priorities
TRNWR - 6	Improve wildlife passage across 99W	Improve wildlife passage from properties across 99W including Onion Flats to TNWR.	No	MID TERM: 5-15 years	MEDIUM - 1/2 million to 5 million	MID TERM: 5-15 years	

TUALATIN RIVERKEEPERS

TRV - 1	Implement Washington Square Regional Center Plan	Ensure livability and environmental goals of Washington Square Regional Center Plan	No		HIGH - 5 million and up	Policy	
TRV - 2	Separation of bikes and cars	Separation of bikes and cars is needed and consider shallow drainages that separate vehicle types	No		HIGH - 5 million and up	Policy	
TRV - 3	Natural Resource acquisition in Corridor	Have the City of Tigard consider buying natural resources and then selling the developable portions	No		HIGH - 5 million and up	Policy	
TRV - 4	SW 80th Additional bike path and sidewalks	SW 80th extending from Oelison Road on to the north needs to be connected to HWY 99 by bike path as well as sidewalk system	No		MEDIUM - 1/2 million to 5 million	Policy	
TRV - 5	Restoration of South Fork Ash Creek	Full drainage length of South Fork Ash Creek extending underneath I-5 and Barbur Boulevard down to Mt. Sylvania needs to be considered and protected	No		MEDIUM - 1/2 million to 5 million	Policy	
TRV - 6	Restoration of Red Rock Creek	Full drainage length of Red Rock Creek which enters Fanno Creek opposite the Tigard Library needs to be considered and protected	No		MEDIUM - 1/2 million to 5 million	Policy	
TRV - 7	99W Center swale conversion	Wide center median on 99W needs to be used for stormwater quality and quantity. 99W center swale conversion for stormwater quality and quantity.	No		MEDIUM - 1/2 million to 5 million	Policy	
TRV - 9	Improve Fanno Creek bridge crossings	Bridge crossings need to be expanded to allow for creek meander, provide safe wildlife passages and adequate room for pedestrian and bike trails.	No		HIGH - 5 million and up	Policy	
TRV - 10	Removal of watershed barriers	Removal of small dams in the SW Corridor would improve water quality and fish habitat and be supportive of the goals of the Tualatin Basin Healthy Streams plan.	No		HIGH - 5 million and up	Policy	
TRV - 11	Improve Stormwater Quality	There are a lot of huge parking lots in the SW Corridor including Washington Square, the Tigard Triangle and big box retailers in Sherwood. We should use this	No		HIGH - 5 million and up	Policy	
TRV - 12	Pedestrian Crossing /Sky Bridge over 99W	Bus access to the Tualatin River National Wildlife Refuge is good outbound but not inbound. A sky bridge or tunnel across 99W would provide Tri-Met riders a safe way to	No		HIGH - 5 million and up	Policy	

TUALATIN RIVER WATERSHED COUNCIL

TUWC- 1	Remove stream barriers to endemic species	Remove barriers such as dams and culverts and/or mitigate their impacts to endemic species. Prioritize Tualatin River, Scoggins Creek Basin, Dairy-McKay	No		HIGH - 5 million and up	Policy	
TUWC- 2	Remove stream barriers to Cutthroat Trout	Remove barriers such as dams and culverts and/or mitigate their impacts to cut throat trout species. Prioritize Bronson, Willow, Cedar Mill, Wapato, Ayers, Hill	No		HIGH - 5 million and up	Policy	
TUWC- 3	Improve hydrologic conditions	Geographic priorities: Tualatin River main stem and all sub-basins. Improve hydrologic conditions: Ensure adequate water flow to meet endemic fish needs	No		HIGH - 5 million and up	Policy	
TUWC- 4	Improve hydrologic conditions	Geographic priorities: Tualatin River main stem and all sub-basins. Improve hydrologic conditions: Manage peak flows and storm water in urbanized areas.	No		HIGH - 5 million and up	Policy	
TUWC- 5	Improve riparian conditions	Improve geomorphic conditions: increase bank stability, increase sinuosity (remove channel straightening), decrease channel entrenchment/increase flood plain	No		HIGH - 5 million and up	Policy	
TUWC- 6	Restore riparian conditions	Manage invasive species to gain increase in native plant community diversity, expand stream cover, and increase woody debris. Prioritize project sites that affect longer	No		HIGH - 5 million and up	Policy	
TUWC- 7	Improve Water Quality	Implement strategies to improve water quality in the Tualatin River. The DEQ lists the Tualatin River as 'water quality limited' due to its higher temperature (low flows	No		HIGH - 5 million and up	Policy	
TUWC- 8	Restore wetlands and floodplains	Preserve, restore, and enhance wetlands and floodplains, including emergent wetlands in all areas of Tualatin River watershed.	No		HIGH - 5 million and up	Policy	
TUWC- 9	Preserve intact upland areas	Preserve intact upland areas such as oak woodlands, prairie and oak savannas in all areas of Tualatin River watershed.	No		HIGH - 5 million and up	Policy	
TUWC- 10	Remove invasive species	Priority removal of invasive species in all areas of Tualatin River watershed.	No		HIGH - 5 million and up	Policy	
TUWC- 11	Prioritize connectivity of uplands	Prioritize connectivity of uplands to support wildlife corridors in all areas of the Tualatin River watershed.	No		HIGH - 5 million and up	Policy	