

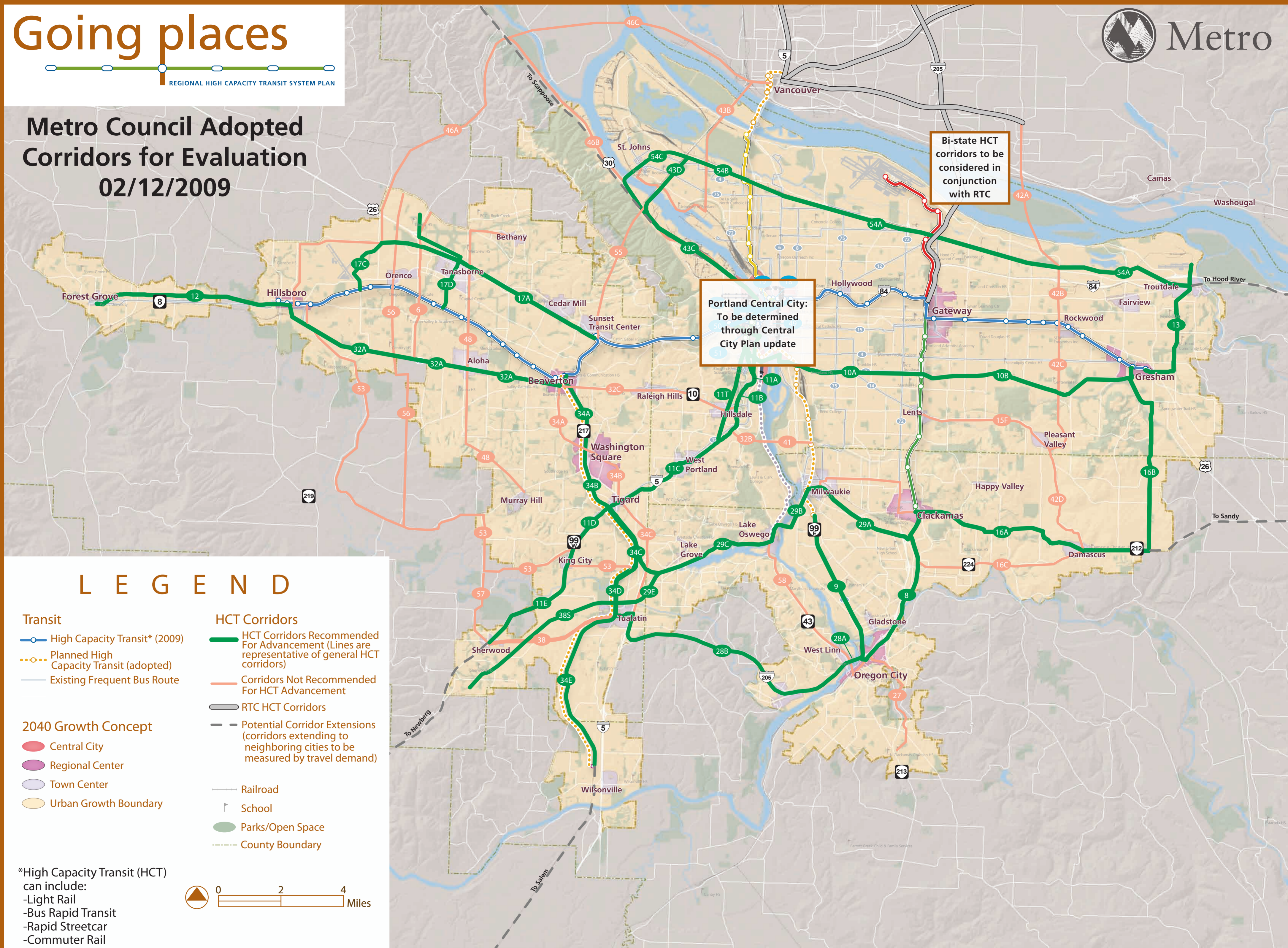
Going places



REGIONAL HIGH CAPACITY TRANSIT SYSTEM PLAN



Metro Council Adopted Corridors for Evaluation 02/12/2009



Portland Central City:
To be determined
through Central
City Plan update

Bi-state HCT
corridors to be
considered in
conjunction
with RTC

LEGEND

Transit

- High Capacity Transit* (2009)
- Planned High Capacity Transit (adopted)
- Existing Frequent Bus Route

2040 Growth Concept

- Central City
- Regional Center
- Town Center
- Urban Growth Boundary

HCT Corridors

- HCT Corridors Recommended For Advancement (Lines are representative of general HCT corridors)
- Corridors Not Recommended For HCT Advancement
- RTC HCT Corridors
- Potential Corridor Extensions (corridors extending to neighboring cities to be measured by travel demand)
- Railroad
- School
- Parks/Open Space
- County Boundary

*High Capacity Transit (HCT) can include:
-Light Rail
-Bus Rapid Transit
-Rapid Streetcar
-Commuter Rail

