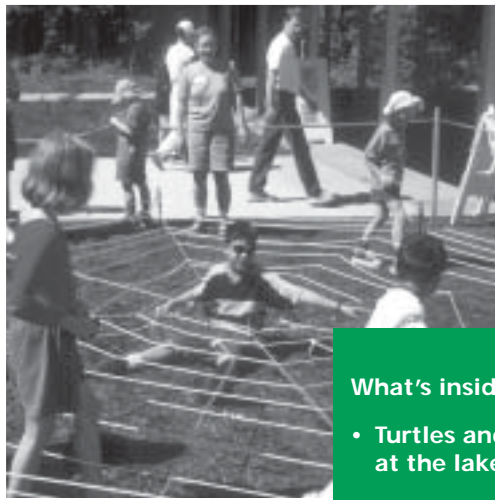


Metro GreenScene

NEWS & THINGS TO DO

Summer 2002



What's inside?

- Turtles and twilight at the lakes
- Johnson Creek dam removal project
- Around the campfire at Oxbow
- Summer fun for kids
- Nature activities for everyone



METRO

PEOPLE PLACES
OPEN SPACES

Summer at the lakes

Smith and Bybee Lakes Wildlife Area



The wildlife area offers a universally accessible paved trail with two wildlife viewing platforms.

At nearly 2,000 acres, Metro's Smith and Bybee Lakes Wildlife Area is the largest protected wetland within an American city. This natural area is one of the region's best-kept secrets, hiding in a part of Portland surrounded by port terminals, warehouses and other commercial developments. Most visitors are surprised to find beaver, river otter, black-tailed deer, osprey, bald eagles and Western painted turtles living only minutes from downtown Portland.

Twilight Tuesdays

7 to 9 p.m. June 18,
July 2 and 16
6:30 to 8:30 p.m. July 30,
Aug. 6 and 20

These unique evening walks at Smith and Bybee Lakes Wildlife Area take advantage of the long summer days and give you a chance to unwind after work. Dusk is one of the best times to see wildlife, especially in summer, and it is about the only time you can see most mammals such as beaver, otter, muskrat, raccoon, nutria, deer and mink. Metro naturalist James Davis will teach the basics of wildlife watching and identification. All ages are welcome, but children must be able to be quiet, sneaky and patient. Bring drinking water and insect repellent. To register, call (503) 797-1850 option 4.



Metro People places • open spaces

Metro serves 1.3 million people who live in Clackamas, Multnomah and Washington counties and the 24 cities in the Portland metropolitan area. The regional government provides transportation and land-use planning services and oversees regional garbage disposal and recycling and waste reduction programs.

Metro manages regional parks and greenspaces and owns the Oregon Zoo. It also oversees operation of the Oregon Convention Center, the Portland Center for the Performing Arts and the Portland Metropolitan Exposition (Expo) Center, all

managed by the Metropolitan Exposition Recreation Commission.

For more information about Metro or to schedule a speaker for a community group, call (503) 797-1510 (public affairs) or (503) 797-1540 (council).

Metro's web site
www.metro-region.org

Your Metro representatives
Executive Officer – Mike Burton;
Auditor – Alexis Dow, CPA;
Metro Council – Presiding Officer Carl Hosticka, District 3; Deputy Presiding Officer Susan McLain, District 4; Rod Park, District 1; Bill Atherton, District 2; Rex Burkholder, District 5; Rod Monroe, District 6; David Bragdon, District 7.

Metro GreenScene is produced by Metro's Regional Parks and Greenspaces Department; Charles Ciecko, director.

On the cover

(clockwise from top left): a blanket of oxalis at Metro's Ambleside property, a bird-watcher at Smith and Bybee Lakes Wildlife Area, children enjoying Bug Fest, a river otter.

Photographs by Bruce Barbarasch, Martin Campos, Janelle Geddes, Lupine Hudson, Dan Miller, Linnea Nelson, Bob Sallinger and Lia Waiwaiole

Illustrations by Carey Cramer, Kathy Deal, Janice Larson, Barbara Macomber and Antonia Manda

If you have a disability and need accommodations, call (503) 797-1850, or call Metro's TDD line at (503) 797-1804. If you require a sign interpreter, call at least 48 hours in advance. Activities marked with this symbol are wheelchair accessible:




Bus and MAX information:
(503) 238-RIDE (238-7433).

To be added to the mailing list (or to make any changes), call (503) 797-1850 option 3.

Painted Turtle Walk 'n Talk

noon to 1:30 p.m.

Saturdays, June 8 and 22, July 6 and 20, Aug. 3 and 31, Sept. 7

Smith and Bybee Lakes Wildlife Area is home to one of the largest remaining populations of the Western painted turtle in Oregon. Why are they called "painted" turtles? Why has this beautiful reptile become so rare? What can be done to help these turtles make a comeback? Find out all about these famous residents of the wildlife area and study them with binoculars and spotting scopes as they bask on logs. Suitable for adults and children 6 and older. To register, call (503) 797-1850 option 4. 

Summer Bird Watching 9 to 11 a.m.

Saturdays, June 8 and 22, July 6 and 20

Wander the trails at Smith and Bybee Lakes Wildlife

Area with Metro naturalist and birding expert James Davis. The nesting birds will be settled in and some migrants still will be passing through, making for lots of action. Songbirds will be singing and we'll spend time learning to identify the most common by their songs. Suitable for adults and children 12 and older. To register, call (503) 797-1850 option 4. 

Stewardship Days at Smith and Bybee Lakes 9 a.m. to 1 p.m.

Saturdays, June 15 and July 13

Help restore this 2,000-acre North Portland wetland by weeding around native plantings, removing invasive species, collecting native plant seeds and picking up trash. We'll also take a break to check out the wildlife that we are helping. To register, (503) 797-1850 option 8.

Paddle Trips with the Friends

Traveling by canoe or kayak is the best way to explore Metro's Smith and Bybee Lakes Wildlife Area in North Portland. Meet at the parking lot on North Marine Drive. Trips are free. Advance registration required by calling the trip leader. Bring your own kayak or canoe and personal flotation device. *Friends of Smith and Bybee Lakes*

6:30 to 10 p.m.

Friday, June 21

Trip leader: Frank Opila, (503) 283-1145

noon to 4 p.m.

Sunday, July 14

Trip leader: Troy Clark, (503) 249-0482

Also at the lakes

See page 9 for information about Wetland Explorers, a summer series for children.

Fourth of July fireworks and music

at Metro's Blue Lake Regional Park in Fairview

Celebrate Independence Day with fireworks, music and fun. Pack a picnic, load up your loved ones and join us at Blue Lake for a good time for the whole family.

Music from 4 to 10 p.m.

The Let's Dance Band

A 16-piece big band playing classic American favorites

Conjunto Alegre


High-energy Latin dance music

The Mt. Hood Community College Latino Dancers

Lively and colorful dance performance

Girls' Night Out

Blues and country fun featuring Sonny Hess and Kathy Walker

Admission is \$6 per vehicle. No pets, alcohol or personal fireworks. 

Presented by

Yoshida Group

Sponsored by

The Gresham Outlook

Merchants Bank

Metro

KOIN 6

Boeing

Mt. Hood Community College

Multnomah Greyhound Park

Getting there All activities at the wildlife area meet in the parking lot 2.5 miles west of I-5 on North Marine Drive. Don't let the construction on North Marine Drive scare you away; you can still get into the parking lot. Watch for the blue and white sign.



Trolley Trail open house

**10 a.m. to 1 p.m.
Saturday, June 8**

A public open house kicks off a trail planning and design process for the future 6-mile Trolley Trail between Milwaukie and Gladstone. Visit one of two information stations along this historic streetcar line and learn more about this exciting project.

Information stations:

- Southeast Torbank Road and Arista Drive near North Oak Grove Elementary School
- Amazing Grace Lutheran Church at Southeast Concord Road and Arista Drive

Share your ideas for the part of the trail that runs through your neighborhood. Take a guided walking tour at 10:30 a.m., 11:30 a.m. or 12:30 p.m. For more information about the open house, call Metro project manager Jane Hart at (503) 797-1585 or send e-mail to hartj@metro.dst.or.us.

Hosted by: Friends of the Trolley Trail, Portland State University Planning Workshop, Metro, North Clackamas Parks and Recreation District and the city of Milwaukie.

Open spaces

Dam removal restores Johnson Creek fish passage

Metro's restoration work on a 40-acre property on Ambleside Drive in southeast Gresham will allow cutthroat trout and coho salmon to once again spawn upstream in Johnson Creek. The property includes more than a half mile of both Johnson Creek and the popular Springwater Corridor Trail, used by approximately 600,000 people annually. Originally developed at the turn of the century as a summer haven for citizens who traveled by rail to the site, the Ambleside property could serve as a future trailhead and community park along the trail. Someday residents of the region will be able to cycle out to this lush retreat, stroll beneath 100-year-old Hogan cedars (opposite page), watch fish passing by, enjoy a picnic in the cool shady grove and lounge in the sunny meadow.

Purchased by Metro and the city of Gresham with funds from Metro's 1995 open spaces, parks and streams bond measure, the Ambleside property included a concrete and earthen dam across one of two channels of Johnson Creek. The dam was originally built for a road crossing that has since been relocated. With funds from an Oregon Watershed Enhancement Board grant, Metro removed the dam from the south channel in August 2001 to improve fish passage conditions and enhance access to upstream habitats. This

includes access to the reach on Metro's property that contains, according to Oregon Department of Fish and Wildlife (ODFW), the best fish refuge potential on Johnson Creek, with shade cover, deep pools, large woody debris and backwaters.

ODFW reports that allowing fish to access this reach may play one of the most valuable roles in promoting salmon, trout and steelhead populations in the watershed. The dam was the only known structural obstacle on Johnson Creek preventing or

inhibiting fish passage to the headwaters.

Metro took special precautions to minimize adverse impact during the dam removal and to further improve the natural habitat of the stream. Two riffles, or small rapids, and a resting pool were constructed in the stream using strategically placed graded cobble, gravel and sand, and a large downed cedar tree with a root wad to mimic natural conditions. The entire site was washed to interlock the fine gravel and sand with the cobble and to maintain surface stream flow.

A new meandering trench in the center of the streambed collects the summer low flows, with the overall project serving to create channel stability and control flood flows. Fine sediments that had accumulated behind the dam were excavated and deposited off-site. Precise calculations were used to create natural stream

conditions and execute a project that is now completely undetectable as a construction site.

The project received further assistance in labor, equipment and materials from local volunteer groups and partnering agencies, including the Johnson Creek Watershed Council, the city of Gresham, Portland General Electric and SOLV. Volunteers helped remove exotic plant species, especially English ivy, and replant the riparian areas with native plants. Metro replanted 3.5 acres of the site with 2,100 plants and volunteers planted more than 200 plants on an island in the stream. Staff and volunteers will continue to improve and monitor the site.

As of May 15, 2002, Metro has acquired 7,767 acres and more than 62 miles of stream and river frontage with funds from the 1995 open spaces, parks and streams bond measure.



In August 2001, Metro removed a dam from Johnson Creek on its Ambleside open space property in Gresham to improve fish passage.



With the dam removed, cutthroat trout and coho salmon in Johnson Creek now can access upstream habitats, including a reach on Metro property considered to be the best fish refuge on Johnson Creek.

Hogan cedars

Metro's 40 acres on Johnson Creek in Gresham include a stand of 100 majestic towering Hogan cedars, a unique variant of the western red cedar. This is believed to be one of the largest remaining native groves of these trees, distinguished by their tall conical shape, closely spaced short branches and dense foliage. Named after Hogan Road, where they stand, the first descriptions of the unusually narrow trees appeared in 1913. Designated under the city of Gresham's codes as a significant grove and species, this stand was a major factor in preventing a proposed Mt. Hood freeway from paving over the site 30 years ago. Purchase of the property by Metro and the city of Gresham insures that the trees will be protected in perpetuity and available for all to enjoy as a future community nature park.

Ambleside Amble

*11 a.m. to 2 p.m.
Sunday, July 14*

The Ambleside property is not currently open to the public, but you can get a sneak peak on a guided tour with Metro naturalist James Davis. See the results of the dam removal project, learn about the restoration work going on at the site and get a close-up look at the Hogan cedars. To register, call (503) 797-1850 option 4.


Pat Nystrom and his family began volunteering at Ambleside restoration work parties in January 2001. He enjoyed the experience so much that he went through Metro's crew leader training that spring so that he could lead volunteer work parties throughout the region. Since then, the Nystroms have volunteered 150 hours (valued at \$2,400). Recently, the Nystroms became Metro's "site stewards" for Ambleside. Now, they can volunteer on the site at any time, completing restoration projects in coordination with Metro staff.



Clockwise from top left are Parker, Pat, Stephanie, Zoe and Marshall Nystrom.

Around the campfire

at Oxbow Regional Park

Bring the family to Oxbow Regional Park for weekend evening campfire stories, nature programs and old-fashioned entertainment. Due to popular demand, we've expanded our Friday night music series. On Saturday nights, we will continue to feature favorite natural history and storytelling performances. Campfire programs are held in the outdoor forest amphitheater across from the campground. It's a great way to spend the evening when you're camping at Oxbow, but you don't have to camp to enjoy them. Although the park closes at sunset, those who attend the campfire program and want to leave afterward will be let out at the gate by the rangers. Please park in the designated area near the boat ramp. Park entry fee is \$3 per car. No reservations required. For more information, call Metro at (503) 797-1850. 

Campfire Songs and Sing-along

8:30 to 9:30 p.m.

Friday, July 5

Brad Price, former guitarist for the Oregon Trail Band, will make a special musical appearance at Oxbow. He'll strum and sing favorites of his family and yours, including "Puff the Magic Dragon" and many other great campfire songs.

Woody and His Pals

8:30 to 9:30 p.m.

Saturday, July 6

Metro naturalist and resident "bird-clown" James Davis will present slides and stories about Oregon's wacky woodpeckers, some of his favorite birds. Sometimes James starts to look like the birds he talks about. There are rumors of a strange costume.

The Folk Music of Juliet Wyers

8:30 to 9:30 p.m.

Friday, July 12

Join us for a special evening with folk singer and songwriter Juliet Wyers. As one reviewer wrote, Juliet has "a masterful poetic sense with vibrant acoustic guitar work."

Birds of Prey of the Pacific Northwest

8:30 to 9:30 p.m.

Saturday, July 13

Live birds of prey visit the campfire circle with Leslie Rapacki from Hawk Haven. Find out some neat raptor facts and meet these beautiful hawks and falcons up close. Tonight only – an eagle makes an appearance.

Jen and Wendy's Eclectic Tunes

8:30 to 9:30 p.m.

Friday, July 19

Children aren't the only ones who will enjoy Jen and Wendy's wacky theatrical performance style and vocal harmonies. Find your family caught up in a whirlwind of enthusiastic energy with interactive songs featuring bears, bugs and more.

Salmon Stories, Bear Tales and the Legend of Swallowing Monster

8:30 to 9:30 p.m.

Saturday, July 20

Join master storyteller Will Hornyak for an entrancing evening of Northwest myths, legends and tall tales, including many he has not shared here before. Discover interesting facts about the earliest peoples of Oregon and the four-legged, swimming, crawling and flying "people" as well.

Old-Time Bluegrass Campfire Tunes

8:30 to 9:30 p.m.

Friday, July 26

Bluegrass musicians Greg Stone and Lon Jones will play guitar and mandolin and sing old-time tunes around the campfire. Tap your feet, dance with your children or just sit back and enjoy the music.

The Dream Catcher

8:30 to 9:30 p.m.

Saturday, July 27

The performers of Rattling Thunder share Native American dancing, drumming and stories, complete with authentic costumes and instruments. Hear about the connections between native culture and the natural world, with opportunities for audience interaction and questions.

Western Trail Tales and Camp Songs

8 to 9 p.m.

Friday, Aug. 2

Dynamic performer and musician Anne-Louise Sterry brings a collection of interactive stories and songs for all ages. Once upon a time, these tales and tunes were used to while away the long hours on the trail and to keep spirits high around the nighttime campfire.

The Green Bird, A Mexican Story

9 to 10 p.m.*

Saturday, Aug. 3

Drums roll and cymbals crash. Behind Oregon Shadow Theater's illuminated screen, colorful shadow puppets come to life. In this original play inspired by Mexican folktales and accompanied by live music, a boy is turned into a bird, and our brave heroine must save him.

* Note later start time

The Folk Music of Juliet Wyers

8 to 9 p.m.

Friday, Aug. 9

See July 12 description.

Owls, Creatures of the Night

8 to 9 p.m.

Saturday, Aug. 10

What can fly silently, has sharp talons and coughs up hairballs? That's right, owls! Investigate the lives of these mysterious and enchanting creatures with Metro naturalist Emily Thomas. Enjoy slides of Oregon owls and handle real feathers and talons.



**Old-time Bluegrass
Campfire Tunes**
8 to 9 p.m.
Friday, Aug. 16
See July 26 description.

**Cougars, Wolves and
Bears: Tracking the Large
Predators**
8 to 9 p.m.
Saturday, Aug. 17
Tracking these great predators, we'll follow the dance of their stories, listen to the magic language of birds and find our connection to nature awakened. Join professional animal trackers Al Thieme and Heather Stevens of Cascadia Wild! for an evening of stories and fun.

Surefire Duet
8 to 9 p.m.
Friday, Aug. 23
Dave Elliott and Randy Oman, members of the Surefire Bluegrass Band, return to Oxbow. Young Buddy Elliott will join them on standup bass. Enjoy old-style brother duets and sing along with some favorites.



A few days before his 89th birthday, Oxbow regular Bill Ulrich accidentally broke his fishing rod. When park supervisor Jim Lind found out, he organized a quick collection among some of the park staff and several of the anglers who have been fishing with Bill at Oxbow for years. On his birthday, they all surprised him with a new rod and reel, with which he promptly caught a 9-pound winter steelhead.

**Birds of Prey of the
Pacific Northwest**
8 to 9 p.m.
Saturday, Aug. 24
See July 13 description.

Tall Tales and Blue Grass
8 to 9 p.m.
Friday, Aug. 30
Mitch Lockett is a gifted spinner of yarns, a man with an unusual affinity for birds and an old-time musician with "a yodel that will float your eyeballs." Whether it's Ozark tall tales or banjo songs, Mitch brings us a humorous and sometimes poignant performance.

**Storytelling to the Beat
of the Drum**
8 to 9 p.m.
Saturday, Aug. 31
Gordon Munro brings together the ancient arts of drumming and storytelling. For this Labor Day weekend campfire, you'll enjoy hearing folk stories from different cultures all around the world.

Question about nature?

Ask the park naturalist. While you're at Oxbow, keep your eyes open for one of our roving naturalists. They will be visiting the picnic areas and the boat ramp on summer weekends, providing information about wildlife and recreation opportunities in the park. You also can schedule a guided nature hike or activity for your youth group or family picnic. Call (503) 797-1899 for information.

Camping at Oxbow

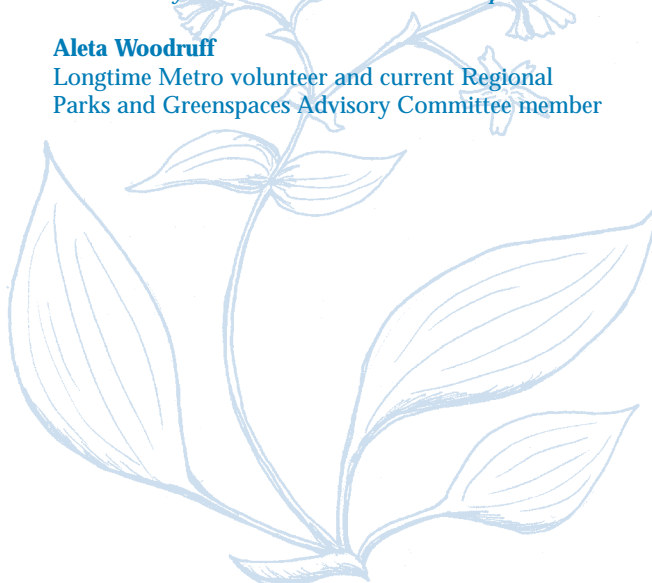
Oxbow Regional Park's 67 campsites each include a picnic table, fire pit/cooking grill and lantern pole. Camping fee is \$13 per night and all sites are available on a first-come, first-served basis. Two new restroom/shower buildings boast hot and cold running water, coin-operated showers, heated-air hand dryers, radiant floor heating and Oxbow's first flush toilets. The restroom facilities and two campsites are accessible by wheelchair. For more information, call (503) 797-1850 or visit the Metro web site at www.metro-region.org.

Oxbow Park

*Oh, mossy bearded cedar bough bend low
And drip clear drops collected from the fog.
Wild violets and pink calypso, grow
and keep blooming by your water-reed filled bog
And let some whispered ancient secrets flow
First captured in the rings within this fallen log.*

*This is a green and gray and golden place.
I promise to leave nothing on the trail
Except my feeble footprints as they trace
My passing through this lovely misty vale
Addressing living creatures I embrace
Their beauty and that their wildness shall prevail.*

Aleta Woodruff
Longtime Metro volunteer and current Regional
Parks and Greenspaces Advisory Committee member



Kid stuff



OXBOW Adventures

1 to 2:30 p.m. Tuesdays
The edge of an ancient forest at Oxbow Regional Park is the setting for this series of children's nature programs led by Metro park naturalists. Meet at Group Picnic Area A. Arrive at the park entrance at about 12:45 p.m. to get to the area on time. Suitable for children 5 or older. Family groups and day care centers are welcome. Free with park entry fee of \$3 per car or \$6 per bus, but advance registration is required. To register, call (503) 797-1850 option 4. Wheelchair accessible by arrangement, except River Roundup.

Osprey Adventure July 2

What does an osprey eat? How big is its nest? Find out all about these big birds of prey, then take a walk to see a real osprey nest – and with luck, the “fish-hawks” themselves. Try out your “wings” on our osprey obstacle course, too.

Bird Detectives July 9

Have you ever wondered what a bird is saying? Bring your eyes and ears to enter the fascinating world of our feathered friends and take home a secret bird decoder ring. Learn about some of the cool birds that live at Oxbow in the summer and how to tell them apart.

Barefoot and Bear Feet July 16

Summer is barefoot time. How do your feet compare to the feet of a bear, a duck or a deer? What can you tell about an animal from its footprints? What other evidence tells you about animal activity? Put yourself in the animals' place by trying to move like it does and take a ticklish barefoot walk.

Bug Mania July 23

Summer time is bug time. Insects and other arthropods burst into activity during the warm months, and this is the time to find them and watch all the amazing things they do. We'll go on a bug safari and solve some bug mysteries. Bugs are great to study because you can catch them, get a close look, and then let them go.

Forest Fashion July 30

What are the animals wearing this summer season? Why is it hard to see the animals living around us? How can you copy the animals to sneak up on them? We will increase our observation and stalking skills so you can see more wildlife everywhere.

River Roundup Aug. 6

Discover firsthand the many creatures that live in and near the Sandy River. We'll have a great time catching and releasing waterbugs, crayfish and more.



BLUE LAKE Nature Crafts

10 to 11 a.m. Wednesdays

Join the fun at Blue Lake Regional Park learning about nature and making crafts to take home. Programs are held at the Clatsop shelter. Cost is \$2 per child for materials, payable the day of the event. Park entrance fee is an additional \$3 per car or \$6 per bus. Activities are suitable for ages 4-14. Advance registration is required. Call (503) 797-1850 option 4 to reserve your space.

Pioneer Candles June 26

Make a candle from scratch using an old-fashioned method used by pioneers. Learn neat techniques to make your candle unique.

Bead Bugs July 3

Bugs are beautiful and helpful. Especially when they are made with beads as a key chain. Create and take home your own “bead-dazzling” bug charm. *Age 8 or older.*

Tiny Clay Creatures July 10

Create your own tiny wildlife scene from clay. Take home a few local critter facts as you get your hands muddy and play in clay.

Animal Footprint Book July 17

Collect animal prints in your own cool journal. Create your own nature journal and take home a new collection of animal paws and claws.

Paper Making July 24

Wasps do it – so can you. Create and take home a sheet of cool handmade paper. Use recycled paper and help save the trees.

Sand Painting July 31

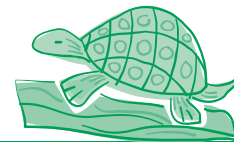
Step back into time and design your own beautiful colored sand painting. Try your hand at this ancient art used in many cultures.

Animal Masks Aug. 7

Let your imagination run wild as you create the likeness of the four-footed and winged ones and capture their images in masks decorated with feathers, fur and paint.

Track T-shirts and Track Casting Aug. 14

How many toes does a red fox have? What is the shape of a beaver's front foot? Find out as you make plaster casts of animals and decorate t-shirts or bandanas with tracks. (Bring your own t-shirt or bandana.)



NATURALLY for Kids

2 to 2:45 p.m. Wednesdays

Join us at Blue Lake Regional Park for nature shows, magic, juggling, world beat music and other great entertainment for children. Focusing on fun, discovery and learning, outdoor performances are designed for children 3-10. Programs are in the bandstand area. If it rains, look for us in the Chinook shelter. Day care groups are welcome. Free with regular park admission of \$3 per car or \$6 per bus. No reservations required.

OMSI Creature Feature
June 26

See a large variety of animals and discover their fascinating features. What is the difference between a land turtle and a water turtle or a lizard and a snake? Get a close look at animals and their adaptations for survival in “wildly” different environments.

Leapin’ Louie
Lichtenstein
July 3

Be ready for a truly leaping performance as Louie combines his funny sketch comedy with trick roping, juggling and other surprises to keep you laughing and anxiously awaiting his next unpredictable act of daring.

Jen and Wendy’s
Eclectic Tunes
July 10

These wacky theatrical ladies joyfully harmonize to bring you a magically entertaining and interactive performance. Filled with eclectic themes, their music brings a whirlwind of positive enthusiastic energy sure to engage children and parents alike.

Northwest Birds of Prey
July 17

Get up close and personal with some of the magnificent eagles, hawks and owls from Hawk Haven. Learn about the important role raptors play in maintaining a healthy environment.

Jugglemania with Rhys
Thomas
July 24

Charmingly charismatic, absurdly versatile and great with youngsters and adults alike, Rhys combines stand-up comedy with daring feats of the circus to deliver his delightful show.

Anne-Louise Sterry and
Cascade Urban Cowboys
July 31

This sophisticated crew of singing cowboys and storytellers will sing and spin the craziest selection of yarns and range songs you have ever heard. From prairie opera to saddle jazz, they’ll make you wonder where you left your boots.

Comedy 4 Da Kids
Aug. 7

A magician hero, Arthur Atsma provides an enthusiastic show of unbelievable sleight-of-hand mixed with kid-friendly humor and lots of opportunities to volunteer in the act.

Milagro Bailadores
Aug 14

Enjoy a dazzling array of exuberant dance compositions and musical pieces, featuring dance and music from Mexico, Brazil and Cuba. Learn about the cultures of these faraway places through dynamic rhythms and colorful dances.

Bird Day
July 4

What birds nest at Smith and Bybee lakes? Why do they sing so much? Who’s the smartest bird at the lakes? Bring your binoculars, if you have them, and we’ll find the answers to these questions.
Age 9 or older.

Turtle Day
July 11

Smith and Bybee lakes are home to the Western painted turtle. Why are these beautiful reptiles so rare? Why are they called “painted?” During the sunny days of summer, it is common to see dozens of these turtles. We’ll keep our eyes open for other reptiles and amphibians as well. *Age 6 or older.*

Mammal Day
July 18

Mammals are very hard to see, especially during the day, but we often find evidence that they are around. We’ll look for animal tracks and scat, beaver chews, mouse trails and other signs of mammals that live at the lakes. *Age 8 or older.*

Bug Day
July 25

Summer is big time bug time and we should find lots of different kinds of insects, spiders and other creepy crawlies in the air, on the land and especially in the water. Come prepared to crawl around on the ground and get dirty. *Age 6 or older.*

Wildlife Watching and
Animal Camo Day
Aug. 1

Why don’t most people see animals in the wild? How can you see animals before they run away? Can you tell what animals live at the lakes without really seeing them? Learn to see wildlife and read their signs as we look for all kinds of animals. *Age 9 or older.*

Wet Animals Day
Aug. 8

We will focus on animals that live in the water – beaver, frogs, insects and our famous Western painted turtles. *Age 6 or older.*

MORE
Summer Fun

Tot Walks

11 a.m. to noon Mondays, June 10, 17 and 24
Explore the “wild side” of different urban parks in the Lake Oswego area. This program is for children 6 and younger with a parent. \$3 per day for Lake Oswego residents; \$5 for all others. To register, call (503) 675-2549. *Lake Oswego Parks and Recreation*

Summer Nature Camps
Weekly, June 24-Aug. 23

The Tualatin Hills Nature Park offers summer day camps for children 4-12. Full and half-day programs give the chance to study nature, hike, observe critters, make crafts, play games and go on field trips. A different theme is explored each week. Times and fees vary by age group. For more information, call (503) 644-5595. *Tualatin Hills Park and Recreation District*

Cascadia Wild! Camps
Monday through Friday, June 24-28, July 8-12, July 15-19 and July 29-Aug. 2

Embark on a summer nature adventure. Explore the arts of animal tracking, bird language, wilderness survival and edible/medicinal plants. Spend three days in Forest Park and then go to Oxbow Regional Park for a two-day overnight camping experience. For youth age 10-14. \$200 per session; scholarships available. To register, call (503) 235-9533. *Cascadia Wild!*



WETLAND
Explorers

10 a.m. to noon
Thursdays

Spend Thursday mornings exploring the diverse wildlife at Metro’s Smith and Bybee Lakes Wildlife Area with naturalist James Davis. Bring drinking water and snacks and binoculars, if you have them. These free programs are for school-age children accompanied by a parent (see individual age guidelines listed with each activity). To register, call (503) 797-1850 option 4.



VOLUNTEERING – it's your nature

Making a difference at Lone Fir Pioneer Cemetery

A Midsummer Night's Living History Tour 6 to 9 p.m.

Saturday, June 29

Join Friends of Lone Fir Cemetery and the Six Feet Above Ground Cast on a tour through Metro's Lone Fir Cemetery. Our region's history will come to life in an interactive tour of this special landmark. Children are welcome, but please leave pets at home. \$5 suggested donation. For more information, call (503) 232-1643. ♿

Monumental Evenings 6:30 p.m. to sunset

Tuesdays

Last year, Monumental Evenings volunteers cared for more than 400 gravestones at Metro's Lone Fir Cemetery. Join them this year as they tackle "block one" of this historic pioneer cemetery. Feel free to bring a sack dinner. Children are welcome, but

please leave pets at home. For more information, call (503) 232-1643. ♿

Community Pioneers Work Day

9 a.m. to noon

**Saturdays, June 15, July 20
and Aug. 17**

Join the Friends of Lone Fir Cemetery for invasive species removal, monument cleaning and other volunteer activities at this historic pioneer cemetery. Volunteers are invited on a small tour of the cemetery at the end of each work party. Children are welcome, but please leave pets at home. For more information, call (503) 232-1643. ♿



Two of Lone Fir Cemetery's best "friends" are Joe Lyons and Christina Walsh. Joe first took an interest in this historic place when he came out to participate in a work party in 1999. He fell in love with the site and designed and founded a nonprofit "friends" group to enhance the restoration and education opportunities at Lone Fir. Joe organizes workdays and historical tours and is president of Friends of Lone Fir Cemetery. Christina has single-handedly obliterated the trash problem at the cemetery. She comes four to five times a week to pick up trash, talk to visitors and keep an eye on the 30-acre history park. (She even keeps a tally of all the bottles, cans and interesting trash she finds.) Christina has recently completed training to become a volunteer site steward for Lone Fir Cemetery. Thank you to Joe, Christina and all the other Friends of Lone Fir Cemetery for making all of this happen.



VOLUNTEER Ventures

First Saturdays at Oxbow

11 a.m. to 2 p.m.

**Saturdays, June 1, July 6
and Aug. 3**

Lend a hand at Oxbow Regional Park combating the spread of non-native plants. Bring gloves, snacks, long sleeves and water. For more

information, call (503) 797-1850 option 8. *Metro Regional Parks and Greenspaces Department*

Natural Area Tree Care

**9 a.m. to noon every
Saturday**

Join Friends of Trees and others in your community on Saturday mornings to do vital restoration work at urban natural areas. No experience is necessary; tools and training are provided. No registration required. Find out where events are being held by visiting www.friendsoftrees.org and clicking on "upcoming

events," or by calling (503) 284-TREE. *Friends of Trees*

New Volunteer Orientations

**noon to 1 p.m. or 6 to 7 p.m.
Wednesdays, June 5, July 3
and Aug. 7**

Join us for new volunteer orientation either during the lunch hour or in the evening at Metro Regional Center, 600 NE Grand Ave. Learn about Metro's Regional Parks and Greenspaces Department, hear about the benefits of volunteering, receive information on volunteer job opportunities in the field and office, complete your volunteer application and enjoy the

company of other new volunteers. Afternoon orientations are in room 275; evening orientations are in room 370. To register, call (503) 797-1850 option 7. *Metro Regional Parks and Greenspaces Department*

Powell Butte Nature Park Trail Maintenance

**9 a.m. to noon Saturdays,
June 8, July 13 or Aug. 10**

Help rebuild the trail that connects Powell Butte Nature Park to the Springwater Corridor Trail. Bring water, gloves and sturdy shoes. Meet at the parking lot at the top of the hill on Southeast 162nd

Avenue off Powell Boulevard.
To register, call (503) 823-6131. *city of Portland*

Community Ivy Pull at Tryon Creek
9 a.m. to 1 p.m. Saturdays, June 8, July 13 and Aug. 10
Volunteers gather at Tryon Creek State Park on the second Saturday of every month to help rid the park of invasive English ivy. Bring gloves and wear sturdy shoes. For more information, call (503) 636-4398. *Friends of Tryon Creek State Park*

Errol Heights Wetlands
9 a.m. to noon Saturdays, June 15, July 20 and Aug. 17
Help restore this 10-acre wetland by removing invasive plants including English ivy and clematis. Meet at the corner of Southeast 52nd and Tenino. Bring water, gloves and sturdy shoes. To register, call (503) 823-6131. *city of Portland*

Willamette Narrows
1 to 4 p.m. Sunday, June 16
This 200-acre site near the Canby ferry has wonderful access to the Willamette River. It also has a large English ivy problem killing trees adjacent to the river and along a nearby ridge. Bond with your family, friends and other community members as you work together to protect the site's natural resources for current and future generations. To register and receive directions, call (503) 797-1850 option 8. *Metro Regional Parks and Greenspaces Department*

Glendoveer Fitness Trail
9 to 11 a.m. Wednesdays, June 19 and July 17
Fore! Help repair sections of this popular nature trail around Glendoveer Golf Course. We will be clearing the trail and removing invasive vegetation. Meet at the parking lot at Northeast

148th Avenue and Halsey Street. Bring gloves. For more information or to register, call (503) 797-1850 option 7. *Metro Regional Parks and Greenspaces Department*

Third Thursday Work Party at Tryon Creek
10 a.m. to 1 p.m. Thursdays, June 20, July 18 and Aug. 15
On the third Thursday of each month, Friends of Tryon Creek State Park welcomes new and seasoned volunteers to help with projects such as preparing exhibit space and bulk mailings. For more information, call (503) 636-4398. *Friends of Tryon Creek State Park*

Clackamas River Work Party
9 a.m. to noon Saturday, June 22
Enjoy the scenery of the Clackamas River as you improve habitat for fish and wildlife. We need your help to remove Japanese knotweed and "old growth" scotch

broom from the riverbanks of this Metro open space acquisition. These two invasive species are displacing native plants, a necessary component of a healthy ecosystem. This site is located near Barton Park on the south side of the river. To register and receive directions, call (503) 797-1850 option 8. To learn more about a collaborative effort to remove Japanese knotweed from the Clackamas and Sandy rivers or to get involved, call (503) 813-7554. *Metro Regional Parks and Greenspaces Department*

Fifth of July Reclamation
9 a.m. to noon Friday, July 5
Help "reclaim" Blue Lake Regional Park the morning after the big Fourth of July fireworks celebration. Thousands of people come to the park to enjoy fireworks and music, and it takes a lot

of work to get the park back to normal afterwards. As an individual, family or organized group, you will work with staff on a variety of projects and continue your appreciation of the park long past the fireworks. For more information, call (503) 797-1850 option 8. *Metro Regional Parks and Greenspaces Department*

Sandy River
1 to 4 p.m. Sunday, July 28
This Metro open space acquisition borders both the Sandy River and a small tributary near the community of Springdale. Help Metro protect and beautify this site by removing the English ivy suffocating the trees and picking up debris. To register and receive directions, call (503) 797-1850 option 8. *Metro Regional Parks and Greenspaces Department*

HELP WANTED - Volunteer Classified

These jobs are opportunities to work with Metro's Regional Parks and Greenspaces Department staff and volunteers. Training is provided for all positions, although some preferred qualifications are listed. The commitment for these positions varies and each opportunity can be matched with your particular skills and interests. For more information, call (503) 797-1850 option 8 or send e-mail to parkvol@metro.dst.or.us.

Historical gardeners
Howell Territorial Park on Sauvie Island has some history in need of repair. Work with the site coordinator from Oregon Historical Society and Metro gardeners on the herb, rose and perennial gardens. Help with weeding, planting, planning and maintenance of these historic gardens.

Are you a do-it-yourself type of person?

Do people call you handy? Do you like to putter in your garage, working on projects ranging from tool maintenance to carpentry, plumbing and painting? We would love to talk with you about ways to use your skills to benefit parks and greenspaces in your community.

Regional Parks Advisory Committee

It's indoor work that makes a big difference outdoors. Applications are being accepted for five openings on Metro's Regional Parks and Greenspaces Advisory Committee. The 11-member committee meets each month to help guide Metro in planning and operating its parks and greenspaces.

Weld for Salmon's Sake

Would you like to put your welding or metal smithing skill to good use for the health of salmon? In preparation for the annual Salmon Festival at Ox-bow Regional Park, we need to build stands for our banners that will line the drive down to the festival. Your design and material ideas and suggestions are encouraged.

Blue Mondays

Would you like to brighten your Monday morning with a walk in Blue Lake Regional Park? In the summer months, we need help on Monday mornings for a couple of hours cleaning up after the busy weekend. Walk around the park, stroll along the swim beach and help pick up trash. Litter picker, gloves and bags provided. Come one Monday a month or come for all of them.

Wilsonville Tract

9 a.m. to noon

Saturday, Aug. 10

Help Metro and the city of Wilsonville tear down fences to allow for easier travel for wildlife and to open up areas for invasive species removal. Help remove the English ivy threatening to topple many trees at this Metro open space acquisition. We will work along the boundary of a 73-acre forest that includes several streams shaded by big-leaf maple, Douglas fir, red alder and Western red cedar. To register and receive directions, call (503) 797-1850 option 8. *Metro Regional Parks and Greenspaces Department*

Johnson Creek Cleanup

9 a.m. to noon Saturday, Aug. 17

Join Johnson Creek Watershed Council staff and volunteers to remove trash

and litter from Johnson Creek. Take advantage of the break in spawning seasons to get your feet wet in Johnson Creek, which is critical habitat for steelhead, chinook and coho. To register, call (503) 239-3932. *Johnson Creek Watershed Council*

Salmon Watch Program Training

8 a.m. to 12:15 p.m. Saturdays, Aug. 24 and Sept. 14

Help teach Portland area youth about salmon and watersheds with Oregon Trout's Salmon Watch program, an award-winning educational program that centers on streamside field trips to view spawning chinook salmon. You will learn more about water quality, aquatic insects, riparian zones and working with youngsters. To register, call (503) 222-9091 ext. 20. *Oregon Trout*

Second Annual Butterfly Count at Cooper Mountain and Clear Creek

**10 a.m. to 1 p.m.
Saturday, July 13**



Come to the second annual butterfly count at either Cooper Mountain in Washington County or Clear Creek near the Clackamas River. This event is designed to collect information about regional butterfly populations and

introduce the public to new Metro greenspaces acquired with funds from the open spaces, parks, and streams bond measure. Bring binoculars, a butterfly field guide and butterfly net if you have them (not required) and an interest in butterflies (required). This event is geared toward all levels of knowledge and experience. If it rains, the count will be rescheduled for Saturday, July 20. For more information or to register, call (503) 797-1850 option 8. *Metro Regional Parks and Greenspaces Department and Xerces Society*

More nature activities

Lunch with the Birds at Jackson Bottom

noon to 1 p.m. every Wednesday

Meet a Jackson Bottom naturalist and spend your lunch hour learning to identify all the migrating waterfowl and other cool birds at Jackson Bottom Wetlands. Spotting scopes, binoculars and field guides will be provided. Meet at the north viewing shelter next to the Clean Water Services sewage treatment plant on Highway 219 south of Hillsboro. Free. For more information, call (503) 681-6278. *Jackson Bottom Wetlands Preserve* ♿

Guided Hike at Tryon Creek

10 to 11:30 a.m. Every Saturday

Join a naturalist for an informative guided hike through Tryon Creek State Park. Meet at the nature center. Free. No registration required. For weekly topics, call (503) 636-4398. *Friends of Tryon Creek State Park* ♿

Breeze into Summer Ride

9 a.m. to noon Saturday, June 8

Visit Summerlake Park and learn how to bike to Tigard and Washington Square in a scenic fashion. The ride is 10-12 miles with some rolling hills; all ages and abilities are welcome. Meet at the Tualatin Hills Nature Park parking lot. Helmets required. For more information, call (503) 645-2970. *Tualatin Hills Park and Recreation District Trails Advisory Committee*

Springwater Corridor Bike Rides

10 a.m. to 1 p.m. Saturdays, June 8, July 27 or Aug. 24

Enjoy a leisurely bike ride along different sections of the Springwater Corridor Trail and learn about Johnson Creek, one of the Metro area's last freely flowing streams. Visit restoration sites to see what is being done to improve water quality, restore riparian areas and improve fish and wildlife habitat. Bring a lock, a helmet, water and a snack. Some parts of the tours will be on unpaved trails. To register, call (503) 239-3932. *Johnson Creek Watershed Council*

From Salamanders to Stars at Jackson Bottom

7 p.m. until after dark Saturday, June 15

Make your own star chart, create a comet and go for an evening stroll through the wetland with a naturalist. Discover the amazing world of nocturnal animals, investigate insects, look for amphibians and listen for bats. When the sun goes

down, take a look at the night sky through telescopes. Families welcome. \$3 fee per person; children 6 and younger are free. To register, call (503) 681-6278. *Jackson Bottom Wetlands Preserve and Rose City Astronomers*

Fanno Creek Greenway Trail Walk

9 a.m. to noon Saturdays, June 15, July 20 and Aug. 17

Tour a completed section of the 15-mile Fanno Creek Greenway Trail, a multi-use trail planned from the Willamette River in Portland to the Tualatin River in Tualatin. For more information and to register, call Bob

Bothman at (503) 244-7206 or Nathalie Darcy at (503) 452-4320. *Tualatin Hills Park and Recreation District Trails Committee* ♿

Father's Day Ancient Forest Hike and Brunch at Oxbow

11 a.m. to 12:30 p.m. Sunday, June 16
Bring Dad to Oxbow Regional Park and enjoy an easy naturalist-guided hike. We'll walk through the old-growth forest, pausing to enjoy the majestic 800-year-old trees and abundant birds and wildflowers. Enjoy a light picnic brunch that we'll provide at the end of the hike, then return along the river at your own pace. The hike is 2 miles and suitable for adults and children 5 or older. Meet at the ancient forest trailhead 1.25 miles into the park. \$3 per person fee is required in advance. There is also a park entry fee of \$3 per car. Call (503) 797-1850 option 4 to reserve a spot. *Metro Regional Parks and Greenspaces Department*

Larch Mountain 9 a.m. to 3 p.m. Thursday, June 20

Take a guided 6-mile trip through a magnificent old-growth forest, a marshy meadow and a verdant creek. To register, call (503) 636-4112 ext. 22. *Berry Botanical Garden*

CREST Tour and Tract Walk 10 a.m. to noon Saturday, June 22

Meet at CREST (next to the new Boones Ferry Primary School on Wilsonville's west side) for a tour of this new environmental education facility. Then explore the nearby woods on Metro's Wilsonville Tract property and learn about native plants. Light refreshments will be provided for those who stick

around to do some volunteer gardening. To register, call (503) 570-1522. *city of Wilsonville*

Explorando el Columbia Slough

4 to 8 p.m. Saturday, June 29
Join the Columbia Slough Watershed Council for the first Spanish language slough festival. Free food, music and guided canoe trips will be provided. Come to the Whitaker Ponds Environmental Education Center, 7040 NE 47th Ave. For more information, call (503) 281-1132. *Columbia Slough Watershed Council*

Dirt Time

9 a.m. to noon Sundays, June 30, July 28 and Aug. 25
"Dirt time" means spending time practicing the art of animal tracking. Join regional expert trackers and gain experience identifying and interpreting the subtle and complex clues left by wildlife. Meet at the floodplain parking lot at Metro's Oxbow Regional Park. Dirt Time is free with a \$3 per vehicle entry fee to the park. All ages and skill levels are welcome. No advance registration required. *The Tracking Club*

Wildlife Observation and Tracking Skills

Saturday, July 6 8:30 to 11:30 a.m.
Find out about different wildlife observation, tracking and trailing techniques, learn how to identify different kinds of animal scat, chews, trails, nests, tracks and skulls and spend time in the Jackson Bottom Wetlands Preserve practicing naturalist skills. This workshop is for adults and youngsters 8 and older. Bring your sense of curiosity and adventure. \$10. To register, call (503) 681-6278. *Jackson Bottom Wetlands Preserve*

Walk on the Wild Side of Wilsonville

10 a.m. to 12:30 p.m. Saturday, July 13

Take an educational walk along the Boeckman Creek Crossing and into the lush foliage of Memorial Park. Along the way, you'll observe and learn about various plant and animal life. A free BBQ lunch follows the walk. To register, call (503) 570-1522. *city of Wilsonville* ♿

Bull Run Watershed Tour

8:30 a.m. to 4:30 p.m. Saturdays, July 20 and Aug. 24 and Friday, Aug. 2

Don't miss these rare opportunities to see Portland's tap water at its source. Learn about the protected resources that provide Portland with uniquely high-quality drinking water. \$15. To register, call (503) 823-7407. *Portland Bureau of Water Works* ♿ *by arrangement*

Wapato Island Wild Food Expedition

9 a.m. to noon Saturday, Aug. 3

Explore edible plants of Sauvie Island. Investigate wild foods from marshes, fields and woods – including wapato or Indian potato, wild cherry and more. \$22. To register, call (503) 775-3828. *Wild Food Adventures*

Water Quality: A Watershed Tour

8 a.m. to 4 p.m. Thursday, Aug. 8

Examine the effects of forest management, forest fire, agriculture and urban and industrial development on water quality. Options for maintaining and enhancing this vital resource will also be highlighted. Meet at Mt. Hood Community College. Free. To register, call (503) 229-6718 ext. 27. *Oregon Forest Resources Institute*

Bug Fest

12:30 to 4:30 p.m.

Saturday, Aug. 24

It's not money that makes the world go round. It's bugs. These tiny critters help recycle fallen trees, pollinate flowers and get eaten by larger animals. Celebrate bugs and discover more about our little friends at the Tualatin Hills Nature Park where games, displays, live bugs and guided activities await the whole family. Thanks to an environmental education grant from Metro and U.S. Fish and Wildlife Service, this year's festival will include a new "bug lab." The lab will feature live invertebrates, microscopes, magnifiers and expert naturalists to help you see it all. Admission to the festival is \$1 per person. Most activities are wheelchair accessible. For more information, call (503) 644-5595. *Tualatin Hills Nature Park and Xerces Society*



Calendar at a glance

Blue Lake sports events

Blue Lake Triathlon (USAT Regional Club/ Team Championships)
Sunday, June 2

Women's Sprint Triathlon and Kids "Splash - Pedal - Dash"
Saturday, Aug. 3

Mid-Summer Triathlon
(Sanctioned by USAT; includes ITU Junior Development Wave for ages 15-23)
Sunday, Aug. 4

For more information about these events, call AA Sports at (503) 531-3140 or visit www.racecenter.com.

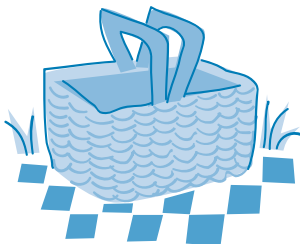
Check out the

GreenScene e-Zine

on the

Metro web site at

www.metro-region.org



June

- 1 First Saturday Workday at Oxbow, pg. 10
- 4 Monumental Evenings, pg. 10
- 5 New Volunteer Orientation at Metro, pg. 10
- 8 Painted Turtle Walk 'n Talk, pg. 3
- 8 Community Ivy Pull at Tryon Creek, pg. 11
- 8 Summer Bird Watching at Smith and Bybee Lakes, pg. 3
- 8 Breeze into Summer Ride, pg. 12
- 8 Springwater Corridor Bike Ride, pg. 12
- 8 Powell Butte Nature Park Trail Maintenance, pg. 10
- 8 Trolley Trail Open House, pg. 3
- 10 Tot Walk through Waluga Park, pg. 9
- 11 Monumental Evenings, pg. 10
- 11 Community Pioneers Work Day at Lone Fir, pg. 10
- 15 Stewardship Day at Smith and Bybee Lakes, pg. 3
- 15 From Salamanders to Stars at Jackson Bottom, pg. 12
- 15 Fanno Creek Greenway Trail Walk, pg. 12
- 15 Errol Heights Wetlands, pg. 11
- 16 Father's Day Ancient Forest Hike and Brunch at Oxbow, pg. 13
- 16 Willamette Narrows, pg. 11
- 17 Tot Walk through Tryon Creek State Park, pg. 9
- 18 Twilight Tuesday at Smith and Bybee Lakes, pg. 2
- 18 Monumental Evenings, pg. 10
- 19 Glendoveer Fitness Trail, pg. 11
- 20 Larch Mountain, pg. 13
- 20 Third Thursday Work Party at Tryon Creek, pg. 11
- 21 Smith and Bybee Lakes Paddle, pg. 3
- 22 Clackamas River Work Party, pg. 11
- 22 Summer Bird Watching at Smith and Bybee Lakes, pg. 3
- 22 CREST Tour and Tract Walk, pg. 13
- 22 Painted Turtle Walk 'n Talk, pg. 3
- 22 Cascadia Wild! Summer Day Camps, pg. 9
- 24 Tot Walk through Springbrook Park, pg. 9
- 25 Monumental Evenings, pg. 10
- 26 Blue Lake Nature Crafts: Pioneer Candles, pg. 8
- 26 Naturally for Kids: OMSI Creature Feature, pg. 9
- 29 A Midsummer Night's Living History Tour, pg. 10
- 29 Explorando el Columbia Slough, pg. 13
- 30 Dirt Time: Animal Tracking at Oxbow, pg. 13

July

- 2 Twilight Tuesday at Smith and Bybee Lakes, pg. 2
- 2 Monumental Evenings, pg. 10
- 2 Oxbow Adventures: Osprey Adventure, pg. 8
- 3 Naturally for Kids: Leapin' Louie Lichtenstein, pg. 9
- 3 Blue Lake Nature Crafts: Bead Bugs, pg. 8
- 3 New Volunteer Orientation at Metro, pg. 10
- 4 Fireworks and music and Blue Lake Regional Park, pg. 3
- 4 Wetland Explorers: Bird Day, pg. 9
- 5 Oxbow Campfire Program: Campfire Songs and Sing-along, pg. 6
- 5 Fifth of July Reclamation, pg. 11
- 6 Oxbow Campfire Program: Woody and His Pals, pg. 6
- 6 Painted Turtle Walk 'n Talk, pg. 3
- 6 Wildlife Observation and Tracking Skills, pg. 13
- 6 First Saturday Workday at Oxbow, pg. 10
- 6 Summer Bird Watching at Smith and Bybee Lakes, pg. 3
- 8 Cascadia Wild! Summer Day Camps, pg. 9
- 9 Oxbow Adventures: Bird Detectives, pg. 8
- 9 Monumental Evenings, pg. 10
- 10 Blue Lake Nature Crafts: Tiny Clay Creatures, pg. 8
- 10 Naturally for Kids: Jen and Wendy's Eclectic Tunes, pg. 9
- 11 Wetland Explorers: Turtle Day, pg. 9
- 12 Oxbow Campfire Program: The Folk Music of Juliet Wyers, pg. 6
- 13 Walk on the Wild Side of Wilsonville, pg. 13
- 13 Oxbow Campfire Program: Birds of Prey, pg. 6
- 13 Butterfly Count at Cooper Mountain and Clear Creek, pg. 12
- 13 Stewardship Day at Smith and Bybee Lakes, pg. 3
- 13 Powell Butte Nature Park Trail Maintenance, pg. 10
- 13 Community Ivy Pull at Tryon Creek, pg. 11
- 14 Ambleside Amble, pg. 5
- 14 Smith and Bybee Lakes Paddle, pg. 3
- 15 Cascadia Wild! Summer Day Camps, pg. 9
- 16 Twilight Tuesday at Smith and Bybee Lakes, pg. 2

- 16 Oxbow Adventures: Barefoot and Bear Feet, pg. 8
- 16 Monumental Evenings, pg. 10
- 17 Blue Lake Nature Crafts: Animal Footprint Book, pg. 8
- 17 Glendoveer Fitness Trail, pg. 11
- 17 Naturally for Kids: Northwest Birds of Prey, pg. 9
- 18 Wetland Explorers: Mammal Day, pg. 9
- 18 Third Thursday Work Party at Tryon Creek, pg. 11
- 19 Oxbow Campfire Program: Jen and Wendy's Eclectic Tunes, pg. 6
- 20 Oxbow Campfire Program: Storytelling with Will Hornyak, pg. 6
- 20 Summer Bird Watching at Smith and Bybee Lakes, pg. 3
- 20 Painted Turtle Walk 'n Talk, pg. 3
- 20 Fanno Creek Greenway Trail Walk, pg. 12
- 20 Community Pioneers Work Day at Lone Fir, pg. 10
- 20 Errol Heights Wetlands, pg. 11
- 20 Bull Run Watershed Tour, pg. 13
- 23 Oxbow Adventures: Bug Mania, pg. 8
- 23 Monumental Evenings, pg. 10
- 24 Blue Lake Nature Crafts: Paper Making, pg. 8
- 24 Naturally for Kids: Jugglemania by Rhys Thomas, pg. 9
- 25 Wetland Explorers: Bug Day, pg. 9
- 26 Oxbow Campfire Program: Oldtime Bluegrass, pg. 6
- 27 Oxbow Campfire Program: The Dream Catcher, pg. 6
- 27 Springwater Corridor Bike Ride, pg. 12
- 28 Dirt Time: Animal Tracking at Oxbow, pg. 13
- 28 Sandy River Work Day, pg. 11
- 29 Cascadia Wild! Summer Day Camps, pg. 9
- 30 Monumental Evenings, pg. 10
- 30 Twilight Tuesday at Smith and Bybee Lakes, pg. 2
- 30 Oxbow Adventures: Forest Food and Fashion, pg. 8
- 31 Naturally for Kids: Cascade Urban Cowboys, pg. 9
- 31 Blue Lake Nature Crafts: Sand Painting, pg. 8

August

- 1 Wetland Explorers: Wildlife Watching and Animal Camo Day, pg. 9
- 2 Bull Run Watershed Tour, pg. 13
- 2 Oxbow Campfire Program: Western Trail Tales and Songs, pg. 6
- 3 Oxbow Campfire Program: The Green Bird, pg. 6
- 3 Wapato Island Wild Food Expedition, pg. 13
- 3 Painted Turtle Walk 'n Talk, pg. 3
- 3 First Saturday Workday at Oxbow, pg. 10
- 6 Twilight Tuesday at Smith and Bybee Lakes, pg. 2
- 6 Monumental Evenings, pg. 10
- 6 Oxbow Adventures: River Roundup, pg. 8
- 7 Blue Lake Nature Crafts: Animal Masks, pg. 8
- 7 Naturally for Kids: Comedy 4 Da Kids, pg. 9
- 7 New Volunteer Orientation at Metro, pg. 10
- 8 Water Quality: A Watershed Tour, pg. 13
- 8 Wetland Explorers: Wet Animals Day, pg. 9
- 9 Oxbow Campfire Program: The Folk Music of Juliet Wyers, pg. 6
- 10 Powell Butte Nature Park Trail Maintenance, pg. 10
- 10 Oxbow Campfire Program: Owls, Creatures of the Night, pg. 6
- 10 Wilsonville Tract, pg. 12
- 10 Community Ivy Pull at Tryon Creek, pg. 11
- 13 Monumental Evenings, pg. 10
- 14 Naturally for Kids: Milagro Bailadores, pg. 9
- 14 Blue Lake Nature Crafts: Track T-shirts and Track Casting, pg. 8
- 14 Third Thursday Work Party at Tryon Creek, pg. 11
- 16 Oxbow Campfire Program: Old-time Bluegrass, pg. 7
- 17 Oxbow Campfire Program: Cougars, Wolves and Bears, pg. 7
- 17 Community Pioneers Work Day at Lone Fir, pg. 10
- 17 ohnson Creek Cleanup, pg. 12
- 17 Errol Heights Wetlands, pg. 11
- 17 Fanno Creek Greenway Trail Walk, pg. 12
- 20 Monumental Evenings, pg. 10
- 20 Twilight Tuesday at Smith and Bybee Lakes, pg. 2
- 23 Oxbow Campfire Program: Surefire Duet, pg. 7
- 24 Oxbow Campfire Program: Birds of Prey, pg. 7
- 24 Salmon Watch Program Training, pg. 12
- 24 Bull Run Watershed Tour, pg. 13
- 24 Springwater Corridor Bike Ride, pg. 12
- 24 Bug Fest at Tualatin Hills Nature Park, pg. 13
- 25 Dirt Time: Animal Tracking at Oxbow, pg. 13
- 27 Monumental Evenings, pg. 10
- 30 Oxbow Campfire Program: Tall Tales and Bluegrass, pg. 7
- 31 Oxbow Campfire Program: Storytelling to the Beat of the Drum, pg. 7
- 31 Painted Turtle Walk 'n Talk, pg. 3

See you there!

Metro regional parks, greenspaces and facilities

Blue Lake Regional Park

provides archery, volleyball, softball, horseshoes, playgrounds, food concessions, bike and boat rentals, swimming, fishing and large picnic shelters perfect for family reunions and company picnics. Bikers, runners and walkers enjoy the trails along the lake and throughout the park. The Lake House is an elegant site for weddings and other special events.

Location: Between Marine Drive and Sandy Boulevard off Northeast 223rd Avenue. From I-84, take the Fairview exit (14) and go north on 207th Avenue to Sandy Boulevard. Turn right onto Sandy and travel east to 223rd and turn left. Proceed north to Blue Lake Road and the park.

Entrance fee: \$3 per car and \$6 per bus.

Oxbow Regional Park, a 1,200-acre natural area park located within the wild and scenic Sandy River Gorge, offers the opportunity to walk through an old-growth forest or watch fall chinook salmon swim upstream to spawn. The river draws swimmers, rafters, kayakers and anglers. Hiking trails, wooded campsites, reservable picnic areas, horse trails, playgrounds and play fields are also available.

Location: Eight miles east of Gresham. From I-84, take the Troutdale exit (17). Go past the truck stop to the light. Turn right on 257th, go 3 miles to Division Street. Turn left onto Division. Follow the signs 6.5 miles and turn left. Follow the road to the park.

Entrance fee: \$3 per car and \$6 per bus.

Howell Territorial Park on Sauvie Island is a scenic blend of natural and cultural history. The Oregon Historical Society provides interpretive tours of a pioneer house and agricultural museum on summer weekends. Picnickers and birdwatchers enjoy this idyllic site, which also includes nine acres of wetland and surrounding pastoral land.

Location: Take Highway 30 north past Linnton to the Sauvie Island Bridge. Cross the bridge, proceed north approximately 1 mile and turn right onto Howell Park Road.

Smith and Bybee Lakes

Wildlife Area is the largest protected wetland within an American city. Home to beaver, river otter, black-tailed deer, osprey, bald eagles and Western painted turtles, this 2,000-acre wildlife area offers a paved trail with two wildlife viewing platforms. Non-motorized boats are welcome.

Location: On Marine Drive between the Expo Center and Kelley Point Park. Take I-5 to Marine Drive west exit (307). Go west 2.5 miles on Marine Drive to the parking area on the south side of the road.

Beggars-tick Wildlife

Refuge, a 20-acre greenspace located along the Springwater Corridor Trail, was named after a species of native sunflower. The refuge is home to a variety of native plant species and wildlife, and provides open water for migratory waterfowl in the winter.

Location: Southeast 111th Avenue, just north of Foster Road. Also accessible from the Springwater Corridor Trail.

Pioneer cemeteries in Multnomah County offer a unique look into the history of the region and are managed as operating facilities. Dating back as early as 1851, 14 pioneer cemeteries offer scenic tranquility and a glimpse into the past.

Chinook Landing Marine

Park, a 67-acre marine park with six launching lanes on the Columbia River, is the largest public boating facility in Oregon. The park offers picnic and viewing areas, wetland and wildlife habitat, disabled-accessible docks, restrooms and a seasonal river patrol station.

Location: Adjacent to Blue Lake Regional Park on Marine Drive.

Entrance fee: \$4 per vehicle.

M. James Gleason Memorial

Boat Ramp is a convenient public boat launch on the Columbia River, minutes from downtown Portland. Amenities include launch lanes, boarding docks, restrooms, river maps and a river patrol office.

Location: Northeast 43rd Avenue and Marine Drive.

Entrance fee: \$3 per vehicle.

Sauvie Island Boat Ramp

enables boaters to enjoy the quiet waters and wildlife of Multnomah Channel. Picnic tables, parking and restrooms are available.


Location: At the junction of Burlington Ferry and Sauvie Island roads.

Glendoveer Golf Course

provides challenging play for every level with two 18-hole golf courses. A 2-mile fitness trail along the perimeter of the course draws joggers and walkers to the natural setting. There are also tennis and racquetball courts, a driving range and a restaurant.

Location: 140th and Northeast Glisan Street.

Note: In order to protect wildlife habitat, and for their own safety, **pets are not permitted** at any Metro park or greenspace.

 Except for Howell Territorial Park and Glendoveer Golf Course, the parks and facilities above each provide some wheelchair access. For more specific accessibility information, call (503) 797-1728.

Getting there

Tri-Met bus service to Metro parks and greenspaces is limited. For information about combining a bus trip with a walk or a bicycle ride to one of Metro's facilities, call (503) 797-1728.

Information numbers

General number

(503) 797-1850

Picnic reservations

(503) 797-1850 option 2

Registration for Metro activities

(503) 797-1850 option 4

Open spaces

(503) 797-1555

Blue Lake Regional Park

(503) 665-4995

The Lake House

(503) 667-3483

Oxbow Regional Park

(503) 663-4708

Howell Territorial Park

(503) 665-6918

James Bybee House

(503) 222-1741

Smith and Bybee Lakes Wildlife Area

(503) 797-1515

Marine facilities

(503) 665-6918

Glendoveer Golf Course

(503) 253-7507

Pioneer cemeteries

(503) 988-3622



Summer paddle trips

Willamette Narrows Paddle

8 to 11 a.m. Saturday, June 8

Join Willamette Riverkeeper on an excursion to the Rock Island area to explore some great back channels and a fantastic local island complex. Though it is close to the city, this scenic stretch of the Willamette feels like it's a thousand miles away. See some fine examples of madrone, oak and fir forests. Meet at Willamette Park in West Linn. Free. For more information, call (503) 223-6418. *Willamette Riverkeeper*

Tualatin River Discovery Day Paddle

9 a.m. to 2 p.m. Saturday, June 22

The 13th annual Tualatin River Discovery Day paddle trip will pass from a quiet rural setting into a gradually more urbanized environment. Even in the more urbanized settings, many will be surprised at the beauty of the river. Be sure to join us at the end of the paddle for the community fair in Tualatin Community Park. To register, call (503) 590-5813. *Tualatin Riverkeepers*

Sea Kayaking at Sauvie Island


9 a.m. to 6 p.m. Saturday, July 20

Enjoy a relaxing yet invigorating day of paddling at Sauvie Island while viewing orioles, blue herons, osprey, sandhill cranes, various ducks and an occasional bald eagle. Additional staff and adaptive equipment can be provided to support people with disabilities. \$45 includes all equipment, instruction and transportation from Forest Grove. To register, call (503) 681-9471. *Adventures Without Limits* 

Columbia Slough Small Craft Regatta

9 a.m. to 1 p.m. Sunday, July 28

The eighth annual Small Craft Regatta celebrates the Columbia Slough, a waterway with unique history, abundant wildlife and many recreational opportunities. Human-powered boats are featured at this "unrace" to see the slough. Bring the whole family for paddling, short hikes and information about the watershed.

Participants will receive a free t-shirt, refreshments and recreation maps of the slough. Meet at Whitaker Ponds Environmental Learning Center. For more information, call (503) 281-1132. *Columbia Slough Watershed Council*  by arrangement

Rivergrove Paddle

9 a.m. to 1 p.m. Saturday, Aug. 3

Search for river otters, kingfishers, beavers and herons as you enjoy a cool, quiet paddle on the slow moving waters of the Tualatin. To register, call (503) 590-5813. *Tualatin Riverkeepers and Lake Oswego Parks and Recreation*

Willamette Narrows Paddle

10 a.m. to 3 p.m. Sunday, Aug. 4

Just up the Willamette River from its confluence with the Tualatin River is an amazing area with high cliffs and rocky islands known as Willamette Narrows. The views are dramatic and from some spots in the water, it's hard to imagine you are near

a city. Meet Metro naturalist James Davis at Willamette Park in "old West Linn" and paddle about 2 miles upstream, poke around the rocky islands and paddle back. This is easy flat-water paddling with little or no current but wind can be a factor. This free trip is most suitable for canoes and touring or sea kayaks. Participants must provide their own boat and equipment and enough food and water for the trip. To register, call (503) 797-1850. *Metro Regional Parks and Greenspaces Department*

Midsummer Night's Paddle Trip

6 to 8 p.m. Saturday, Aug. 24

Not a morning person? Here's your chance to explore the Tualatin River at dusk. To register, call (503) 590-5813. *Tualatin Riverkeepers*



METRO

PEOPLE PLACES
OPEN SPACES

600 NE Grand Ave.
Portland, OR 97232-2736

New activities will be
added all summer
to the
GreenScene e-Zine
at
www.metro-region.org

ADDRESS SERVICE REQUESTED

Presorted Standard
U.S. Postage Paid
Portland, OR
Permit No. 1246