

Metro GreenScene

NEWS & THINGS TO DO

Spring 2004



METRO

PEOPLE PLACES
OPEN SPACES

What's inside?

- Expanded offerings of Metro trips and classes
- Blue camas nature note
- New volunteer monitoring program
- Planning the nature of the region
- Spring nature activities

New greenspaces advisory committee created

Letter from the director

This winter, the Metro Council created the Greenspaces Policy Advisory Committee to advise Metro as we work to establish and protect a regional system of parks, greenspaces and trails in the Portland metropolitan area. An all-star team of elected officials, park directors, businesspersons, citizen advocates and conservation professionals has been appointed to the committee. Jim Zehren, a partner at the Stoel Rives law firm and a long-time parks and greenspaces advocate, will serve as chair.

Committee members come from all corners of the region and reflect the diverse community of stakeholders in the future of our parks, trails and open spaces. I am thrilled that such knowledgeable and experienced people will be working together to assure a cooperative and effective approach to protecting water quality, improving fish and wildlife

habitat and providing access to nature and recreation opportunities to the people of the region.

By establishing the advisory committee, the Metro Council puts planning for parks, trails and greenspaces on par with such important regional policy areas as land use and transportation. With this heightened level of coordination and consideration, the region takes another big step in the development of the finest regional park system in the country.

I will continue to use GreenScene to keep you posted about the work of the committee. Committee meetings are open to the public; times and locations are listed on the Metro web site at calendar.metro-region.org.

*Jim Desmond, director,
Metro Regional Parks and
Greenspaces
(503) 797-1914
desmondj@metro.dst.or.us*

Greenspaces Policy Advisory Committee members

Ernie Drapela, interim manager, city of Gresham Parks and Recreation Division

Kim Gilmer, director, city of Lake Oswego Parks and Recreation

Steve Greagor, interim director, city of Hillsboro Parks and Recreation

John Griffiths, president, Tualatin Hills Park and Recreation District Board

Faun Hosey, citizen parks and greenspaces advocate

Mike Houck, urban naturalist, Audubon Society of Portland, Urban Greenspaces Institute

Esther Lev, executive director, Wetlands Conservancy

Doug Neeley, commissioner, Oregon City Board of Commissioners

Chris Noble, citizen parks and greenspaces advocate

Mike Ragsdale, Costa Pacific Homes, and former Metro Council presiding officer

Tim Raphael, finance program director, The Trust for Public Land

Zari Santner, director, Portland Parks and Recreation

Dick Schouten, commissioner, Washington County

Don Trotter, chair, North Clackamas Parks and Recreation District Citizen Advisory Board

Jim Zehren, citizen parks and greenspaces advocate

Metro People places • open spaces

Clean air and clean water do not stop at city limits or county lines. Neither does the need for jobs, a thriving economy and good transportation choices for people and businesses in our region. Voters have asked Metro to help with the challenges that cross those lines and affect the 24 cities and three counties in the Portland metropolitan area.

A regional approach simply makes sense when it comes to protecting open space, caring for parks, planning for the best use of land, managing garbage disposal and increasing

recycling. Metro oversees world-class facilities such as the Oregon Zoo, which contributes to conservation and education, and the Oregon Convention Center, which benefits the region's economy.

Your Metro representatives

Metro Council President –

David Bragdon

Metro Councilors – Rod Park, District 1; Brian Newman, deputy council president, District 2; Carl Hosticka, District 3; Susan McLain, District 4; Rex Burkholder, District 5; Rod Monroe, District 6.

Auditor – Alexis Dow, CPA

Metro's web site
www.metro-region.org


Metro GreenScene is produced by Metro's Regional Parks and Greenspaces Department.

On the cover

(clockwise from top left): Young nature enthusiasts at Clear Creek, blue camas, wildlife watching at Gotter Bottom and an evening grosbeak.

Photographs by Scott Earle, C. Bruce Forster, Ron Klein, Mary Ordal, Lora Price, Bob Woods and Curt Zonick

Illustrations by Carey Cramer, Kathy Deal, Barbara Macomber, Antonia Manda

If you have a disability and need accommodations, call (503) 797-1850, or call Metro's TDD line at (503) 797-1804. If you require a sign interpreter, call at least 48 hours in advance. Activities marked with this symbol are wheelchair accessible: 

Bus and MAX information:
(503) 238-RIDE (238-7433).

To be added to the mailing list (or to make any changes), call (503) 797-1850 option 3.

Metro naturalist James Davis takes his show on the road

Nature classes and trips now available in Washington and Clackamas counties



Beginning this spring, Metro naturalist and bird expert James Davis will offer his popular bird watching programs at new locations in Clackamas and Washington counties. Both sites are wheelchair accessible and near TriMet bus or MAX lines.

John Inskeep Environmental Learning Center

Clackamas Community College in Oregon City is home to the John Inskeep Environmental Learning Center, a restored natural area at the headwaters of Newell Creek. The 5-acre site features an observatory and a small trail network that provides easy access to wildlife viewing. Classes will meet in a cozy indoor meeting space overlooking a pond.

Driving directions will be mailed to program participants.

Owls of Oregon

7 to 9:30 p.m. Thursday, March 11

Join James at the John Inskeep Environmental Learning Center for a program about owls. Owls have always fascinated people with their unique appearance and their amazing adaptations for nocturnal hunting. But despite their popularity, owls are very hard to see in the wild and remain a mysterious and confusing group of birds. Learn how owls make their living and how to tell Oregon's owls apart. For adults and teens. Registration and payment of \$8 per person are required in advance; call (503) 797-1850 option 4. ♿

Bird Watching Basics for Beginners

7 to 9:30 p.m. Thursday, April 15

Join James for this special Clackamas County offering of his popular beginning bird watching class. Meet at the John Inskeep Environmental Learning Center, where there will be lots of birds to see right outside the classroom. For registration instructions and more information about this class, see the April 1 description on page 12. ♿

Orchard Park in Hillsboro

Hillsboro's newly developed Orchard Park is a quiet retreat for people and wildlife along Rock Creek. Acquired with funds from Metro's open spaces, parks and streams bond measure, this 21-acre site near the Oregon Graduate Institute is managed by the city of Hillsboro. The park features accessible trails, bridges and boardwalks that wind through woodlands, meadows and wetlands and offer rich bird watching opportunities and views of the creek.

Orchard Park is located at 20900 NW Amberwood Drive, just south of Northwest Cornell Road and west of John Olsen Avenue. The park is one mile north of the Quatama MAX Station and walking distance from TriMet bus routes 48 and 49.

Bird Watching at Orchard Park

10 a.m. to noon Sunday, April 25

Meet James for a bird walk at Orchard Park. Bring your binoculars or borrow a pair of ours. Free. Advance registration required; call (503) 797-1850 option 4. ♿

Evening Bird Walks at Orchard Park

7 to 8:30 p.m. Thursdays, May 6 and 20 and June 3

Join James at Orchard Park for some late spring birding at one of the most pleasant times of the day. Bring your binoculars or borrow a pair of ours. Free. Advance registration required; call (503) 797-1850 option 4. ♿



Boardwalks and bridges protect sensitive creek and wetland areas while providing wheelchair access at Orchard Park in Hillsboro.

Nature note

Blue camas

by Metro chief naturalist
Deb Scrivens

On June 12, 1806, Meriwether Lewis wrote in his journal about the plant we know today as common camas:

“The quawmash is now in bloom and from the color of its bloom at a short distance it resembles lakes of fine clear water, so complete in this deception that on first sight I could have sworn it was water.”

Almost 200 years later, the vibrant blue petals in a field full of camas still create the illusion that Lewis describes in this passage. This sort of abundance of camas, once common throughout the Northwest, is now quite rare, but this effect can be viewed for a short time each spring from one of Metro’s open space properties in Washington County (see Gotter Bottom tour).

Camas grows best in wet places that dry out later in the summer. Many parts of the million-acre prairie that once covered much of the Willamette Valley were ideal growing places for camas. The Kalapuyan people maintained this prairie by selectively burning parts of it each fall. As prairie and other habitats such as oak savannah have become more scarce, so has camas. Although populations of camas may be smaller today, they still occur in a wide range from Southern

British Columbia to Northern California and east to Northern Utah, Wyoming and Montana.

Camas is related to the better-known trillium, both in the lily family. There are three species of blue camas in the Northwest (genus *Camassia*) and three species of white camas, better known as death camas (genus *Zigadenus*). The bulbs of death camas are highly toxic and potentially fatal if eaten. Since blue and white camas grow in exactly the same habitat, bulbs are harvested when the plant is flowering to avoid confusion and potential poisoning.

Common camas (*camassia quamash*) is a type of blue camas that native peoples of the Northwest once relied upon as a food staple and many still enjoy today. The Bannock War of 1878, the last major Indian uprising in the Northwest, was a result of the Bannock Indians trying to protect their food supply of camas from being destroyed by ranchers.

More than two dozen different tribes prepare and cook camas in at least 15 distinctly different ways. In the past, more than 100 pounds of camas would be cooked in one batch and served immediately at potlatches or large feasts. Camas can be pit-roasted, baked, boiled, smashed and pressed and then boiled in stew, cooked and ground into meal to make pancakes, or made into loaves, cakes, mash, gravy or syrup. It also can be dried and stored for winter use. Cooked camas cakes taste a little like baked pear.



The brilliant blue blossoms of common camas color the region's past and present.

Scott Earle/Harkspurbooks.com

Since camas is increasingly scarce, you should not harvest it from the wild. If you are inspired to learn to cook with camas, order some bulbs of edible blue camas and plant your own supply. Then you can enjoy the flowers and feast on them, too.

Gotter Bottom Tour 1 to 3 p.m. Sunday, May 2

Less than 1 percent of the original wet prairie habitat that once covered the Willamette Valley remains today. The Tualatin Riverkeepers and Metro are working together to re-establish a wet prairie and other rare habitat types at Gotter Bottom, a Metro open space near the Tualatin River. Accompany Metro naturalist Deb Scrivens to learn more about these rare areas and the wildlife they support. We are timing our visit in hopes of viewing a beautiful blue “sea” of camas flowers. For adults and older children. Free. Advance registration required; call (503) 797-1850 option 4. You will

receive directions to the meeting place and other details after you register. Metro

Botany of Camassia **Nature Preserve** 1:30 to 4:30 p.m. Thursday, April 29

The Nature Conservancy Camassia Preserve is only 26 acres and yet supports an extraordinary diversity of habitats including oak madrone woodlands, ponds and wet meadows. On this easy hike with geologist Dick Thoms, learn where the dark gray basalt bedrock came from and how it became exposed. See the unique flora of the site, including the stunning camas for which this preserve was named. Be prepared for muddy trails. \$10. To register, call (503) 636-4112 ext. 22. Berry Botanic Garden

Planning the nature of the region

Participate



Protecting fish and wildlife habitat

Metro, your regional government, is working with cities and counties to develop a regional fish and wildlife habitat protection plan. After a regional plan is adopted, cities and counties will be responsible for implementing a local habitat protection plan.

Development of Metro's habitat protection plan is guided by statewide land-use planning Goal 5 (OAR 660-023) and supports the federal Clean Water and Endangered Species acts. In 2000, Metro began a community-wide planning effort to ensure a coordinated program for fish and wildlife habitat protection. In 2002, the Metro Council adopted an inventory that identifies 80,000 acres of regionally significant fish and wildlife habitat.

During 2003, Metro identified the economic, social, environmental and energy (ESEE) consequences of protecting – or not protecting – habitat on a regional scale. This spring, Metro will complete an analysis of six possible protection options and recommend areas where development would be limited in order to protect habitat. The final step is to develop a program to protect regionally significant habitat using tools such as education, incentives, acquisition and regulation.

Join us at an open house to learn more about the Metro's analyses and recommendations. Share your views and advice on where and how fish and wildlife habitat should be protected.

All open houses in this series are 4 to 8 p.m.

March 1

Washington County Public Services Building cafeteria and room 140
155 N First Ave., Hillsboro
Take MAX light rail and TriMet bus 46

March 4

Tualatin Police Department community room
8650 SW Tualatin Rd.
Take TriMet bus 76 and 96 (at peak times)

March 11

Gresham City Hall, Oregon and Springwater Trail rooms
1333 NW Eastman Parkway
Take MAX light rail and TriMet bus 4

March 15

Pioneer Community Center
615 Fifth St., Oregon City
Take TriMet bus 33 and 99

March 16

Sunnybrook Service Center auditorium
9101 SE Sunnybrook Blvd., Clackamas
Take TriMet bus 29 and 31

March 17

Airport Holiday Inn, Salon B
8439 NE Columbia Blvd., Portland
Take TriMet bus 72 and 86

March 18

Mittleman Jewish Community Center auditorium
6651 SW Capitol Hwy., Portland
Take TriMet bus 44 and 45

Identifying industrial lands

In December 2002, following extensive public outreach, the Metro Council approved a major expansion of the urban growth boundary.

However, this expansion did not fully meet the region's need for industrial land for uses such as manufacturing, warehousing or fabrication. In July 2003, the Metro Council directed staff to begin a study of 68,000 acres outside the boundary to determine which lands are suitable for industrial use.

After evaluating factors such as slope, proximity to the boundary and other industrial uses and access to transportation the Metro Council voted in December 2003 to reduce the number of acres being studied to 29,000. Metro is scheduled to make a final decision on adding 2,700 acres for industrial use by June 30, 2004.

In preparation for this decision, the Metro Council invites you to attend an open

house where you can learn more about the proposed boundary expansion intended to meet industrial land needs and share your views and advice.

All open houses in this series are 4:30 to 7:30 p.m.

March 2

Pioneer Community Center
615 Fifth St., Oregon City
Take TriMet bus 33 and 99

March 8

Washington County Public Services Building cafeteria
155 N. First Ave., Hillsboro
Take MAX light rail or TriMet bus 46

March 9

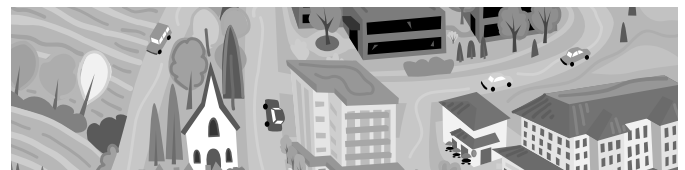
Damascus Community Church
14251 SE Rust Way, Boring

March 10

Metro Regional Center room 370
600 NE Grand Ave., Portland
Take MAX light rail or TriMet bus 6

March 11

St. Cyril Catholic Church social hall
9205 SW Fifth St., Wilsonville
Take SMART Route Bus 204 or take exit 283 off I-5, go west on Wilsonville Road, south on Boones Ferry Road and east on Fifth Street to Fir Street



Choices

For more information, visit Metro's web site at www.metro-region.org or call Metro's planning information hotline at (503) 797-1888 and press option 1 for industrial land or option 2 for fish and wildlife habitat protection.

VOLUNTEERING – *it's your nature*

Wildlife monitoring

With the help of AmeriCorps volunteer Rebecca Wahl, Metro is expanding its volunteer wildlife monitoring program. Armed with binoculars and hip-waders, Rebecca and her recruits will keep an eye on bird and amphibian populations and plant communities at several Metro open space properties (including Cooper Mountain, Coffee Lake, Killin Wetlands, Multnomah Channel, Clear Creek Canyon and River Island).

The valuable information collected by volunteer monitors helps Metro's natural resources team plan and evaluate its restoration efforts. It also is an important factor in planning for appropriate public use at a site.

Rebecca will be developing and implementing a long-term monitoring program. She will recruit and train other volunteers to conduct winter waterfowl surveys, winter amphibian egg mass surveys, spring breeding bird surveys and year-round larval amphibian surveys.



AmeriCorps volunteer Rebecca Wahl is a lifelong resident of the Pacific Northwest and has spent most of her life mucking about its wild and not-so-wild places on foot, on her trusty bike, on skis, and in boats.

HELP WANTED: VOLUNTEER WILDLIFE MONITORS

Do you have skills in local bird, plant or amphibian identification and a commitment to protecting our local environmental heritage? Metro is seeking long-term volunteers with some wildlife experience to collect survey data on local species on open spaces. See specific descriptions that follow. For more information, call Rebecca at (503) 797-1928.

Bird monitors

Adopt a site for seasonal or year-round monitoring. Metro seeks enthusiastic, responsible people with intermediate to expert bird identification skills. Must be able to make a minimum one-year commitment and be able to get up with the birds.

Aquatic amphibian monitors

Metro seeks long-term monitors for larval amphibian surveys on two key properties. Training in amphibian identification and survey techniques will be provided. Must love water, boats, rain, mud and tadpoles.

Plant monitors

Metro seeks six botanically oriented people to help map native and exotic plant targets in combination with a butterfly-monitoring program. Some familiarity with Northwest plants is desired.

Metro celebrates outstanding volunteers

In 2003, more than 1,500 volunteers donated 18,339 hours to Metro Regional Parks and Greenspaces Department, an in-kind donation valued at \$303,327. For a copy of the 2003 volunteer program report, call (503) 797-1939.

Metro volunteers make a significant contribution to the nature of the region by caring for our parks and greenspaces, educating others about our natural resources, building stewardship in our communities, or supporting the day to day work of planning and protecting a regional system of parks, natural areas and trails. These contributions directly benefit fish, wildlife and people today and help ensure a lasting legacy of clean air and water and access to nature for generations to come. Metro councilors and staff honored exceptional volunteers at an awards ceremony in January.

2003 volunteer award winners

Charis Ridge Residential Program
Northwest Service Academy
Portland State University Urban Studies Team

Tualatin Riverkeepers
Bob Bothman
Troy Clark
Larry Everson
Bob and Laila Hungerford
Jeff Locke
Vannessa McClelland
Duane Meissner
Tom Oxley
Mike Pence
Richard Saulsbury
George Smith
Michael Weinberg
Marv Welt
Tammy Young





Volunteer VENTURES

Friends of Trees Work Days

9 a.m. to 1 p.m. Saturdays and some Sundays

Join Friends of Trees and others in your community at weekend work parties to plant neighborhood trees or do vital restoration work at urban natural areas. No experience is necessary; tools and training are provided. Find out where the work parties are by calling (503) 284-8733 or by visiting www.friendsoftrees.org. *Friends of Trees*

Blackberry Pull at Bauman Park

9 a.m. to 1 p.m. Saturday, March 6

Help remove Himalayan blackberry from a section of the Fanno Creek riparian corridor. Bring loppers, a shovel and work gloves, if possible. Refreshments will be provided. Meet at the end of the dead end road just south of Southwest Ames and Oleson roads. For more information, call Melissa at (503) 644-8469 ext. 31. *Tualatin Hills Park and Recreation District*

SOLV Restoration Plantings

9 a.m. to noon Saturdays, March 13 and 20

Join SOLV in its work to preserve this treasure called Oregon. Help plant native trees and plants at parks and stream restoration sites all over the Portland metropolitan area. Tools will be provided. For more information, call Monica at (503) 844-9571. *SOLV*

Powell Butte Nature Park Trail Maintenance

9 a.m. to noon Saturdays, March 13, April 10 and May 8

Help restore the trail system at Powell Butte Nature Park. Bring water, gloves and sturdy shoes. Meet at the parking lot at the top of the hill on Southeast 162nd Avenue off Powell Boulevard. To register, call (503) 823-6131. *Portland Parks and Recreation*

New Volunteer Orientations

noon to 1 p.m. or 6 to 7 p.m. Wednesdays, March 17, April 21 and May 19

Start your Metro volunteer experience off on the right foot. Join us for new volunteer orientation either during the lunch hour or in the evening at Metro Regional Center, 600 NE Grand Ave. Learn about Metro's Regional Parks and Greenspaces Department, hear about the benefits of volunteering, receive information on volunteer job opportunities in the field and office, complete your volunteer application and enjoy the company of other new volunteers. To register, call (503) 797-1850 option 7. *Metro*

Errol Heights Wetland Restoration

9 a.m. to noon Saturdays, March 20, April 17 and May 15

Help restore this 14-acre wetland in the heart of Southeast Portland. Remove invasive plants and replace them with native plants. Meet at the corner of Southeast 52nd and Tenino. Bring water, gloves and sturdy shoes. To register, call (503) 823-6131. *Portland Parks and Recreation*

Woods Memorial Natural Area Restoration

9 a.m. to noon Saturdays, March 20, April 17 and May 15

Help remove invasive plants and replace them with native plants at this park in Southwest Portland. Meet at the corner of Southwest Alice Street and 43rd Avenue. Bring water and gloves. For more information, call (503) 823-6131. *Portland Parks and Recreation*

Mayor's Work Day at Mary S. Young State Park

9 a.m. to noon Saturdays, March 20, April 17, May 15

On the third Saturday of each month, the mayor of West Linn and the Oregon State Parks Department welcome volunteers to help remove invasive English ivy at Mary S. Young State Park. Bring gloves and clippers. For more information, call (503) 723-2544. *city of West Linn*

Tualatin Hills Nature Park Project Day

9 a.m. to 1 p.m. Saturday, March 20

Join ranger Elisa at the Tualatin Hills Nature Park and help eliminate an unofficial trail off the Ponderosa Loop Trail. Restore the area by removing invasive plants and planting natives in their place. Bring work gloves and drinking water. Volunteers younger than 14 must be accompanied by an adult. To register, call (503) 644-5595. *Tualatin Hills Park and Recreation District*

Tualatin Hills Nature Park Project Day

9 a.m. to 1 p.m. Sunday, March 21

Join ranger Ben at the Tualatin Hills Nature Park and help remove scotch broom from the area around the tadpole ponds. Bring work gloves and drinking water. Volunteers younger than 14 must be accompanied by an adult. To register, call (503) 644-5595. *Tualatin Hills Park and Recreation District*

Stewardship Days at Smith and Bybee Lakes

9 a.m. to 1 p.m. Sundays, March 21 and May 16

Help restore this 2,000-acre North Portland wetland by weeding around native plantings, removing invasive species, and picking up trash. We'll also take a break to check out the wildlife that we are helping. For more information, call (503) 797-1850 option 8. *Metro*


Butterfly Park Planting

9 a.m. to noon Saturday, March 27

Plant native trees and shrubs with Portland Parks and Friends of Trees. Meet at Willamette Park picnic area and walk to Butterfly Park. Bring water and gloves. For more information, call (503) 823-6131. *Portland Parks and Recreation*


Great Oregon Spring Beach Cleanup

10 a.m. to 1 p.m. Saturday, March 27

Join thousands of volunteers to help clean up the 362-mile Oregon coastline. Visit www.solv.org for more information and a list of the 42 meeting sites. Bring gloves and wear sturdy shoes. Groups of 20 or more are asked to register in advance. Call (800) 322-3326 for more information. SOLV  *by arrangement*

Arbor Day Tree Planting and Barbecue

10 a.m. to 2 p.m. Saturday, April 10

What better time than Arbor Day to plant trees and celebrate the many useful functions they serve. After a couple hours of planting in Memorial Park in Wilsonville, volunteers will be treated to a barbecue lunch. Advance registration required; call (503) 682-3727. *city of Wilsonville* 

SOLV IT

9 a.m. to 1 p.m. Saturday, April 24

SOLV IT is the largest Earth Day event of its kind in the nation and you can be a part of it. Join a project at one of these Metro sites where all kinds of cleanup and restoration work will be accomplished. There are almost 100 work sites to choose from in the region and thousands of volunteers will participate. Register online at www.solv.org or by calling (503) 844-9571. SOLV WCA

Lone Fir Pioneer Cemetery (22nd and Southeast Morrison) – Clean headstones, pick up litter and help with gardening, trimming and edging at this 30-acre wooded site, rich in local history.

Smith and Bybee Lakes Wildlife Area (North Portland) – Remove litter, eradicate invasive species and care for native plants at the largest protected wetland inside a U.S. city.

Beggars-tick Wildlife Refuge (111th and Southeast Foster) – Help remove lots of litter and loads of invasive Himalayan blackberry from a 21-acre wetland. Enjoy seeing the many birds that rely on this location.

Trolley Trail (between Milwaukie and Gladstone) – Remove debris and clear overgrown areas along this future regional trail.

Killin Wetlands (Banks) – Help restore valuable habitat for rare native plants and birds.

No Ivy Day

9 a.m. to 1 p.m. Saturday, May 8

Join ivy busters throughout Western Oregon to save our trees and stop ivy seeds. Sponsor a site, adopt a site or volunteer as an individual or a group. Visit www.noivyleague.com to see all the available work sites, or consider volunteering at Metro's Blue Lake Regional Park, Clear Creek Canyon or Cooper Mountain. For more information, call (503) 823-3681. *No Ivy League*

Down by the Riverside


9 a.m. to 1 p.m. Friday and Saturday, May 21-22

Down by the Riverside is a day for volunteers to do enhancement work and clean up public spaces around Oregon's rivers, streams and lakes. Hundreds of projects are planned all over the state. For more information, call Monica at (503) 844-9571.

Metro will participate with work parties at Oxbow Regional Park, Chinook Landing Marine Park and Canemah Bluff in Oregon City. To volunteer at a Metro site (Saturday only), call (503) 797-1850 option 8. SOLV and Metro

Wilsonville WERK Day

9 a.m. to 1 p.m. Saturday, May 22

Join the Wilsonville Environmental Resource Keepers for this citywide cleanup and restoration effort. In conjunction with SOLV's "Down By the Riverside," the WERK Day offers opportunities for volunteer participation at a variety of sites including Metro's Wilsonville Tract. Volunteers will be treated to breakfast, a free t-shirt and prizes. Individuals, families, businesses and service groups are encouraged to participate. For more information, call (503) 570-1525. *city of Wilsonville* 

More spring nature activities



PADDLE Trips

Smith and Bybee Lakes Paddle Trips

Traveling by canoe or kayak is the best way to explore Metro's Smith and Bybee Lakes Wildlife Area in North Portland. Meet at the parking lot on North Marine Drive. Free. Advance registration required. Bring your own kayak or canoe and personal flotation device. Friends of Smith and Bybee Lakes

noon to 4 p.m.

Saturday, March 20

To register, call Dale Svart at (503) 285-3084.

10 a.m. to 2 p.m.

Saturday, April 17

To register, call Frank Opila at (503) 283-1145.

noon to 4 p.m.

Sunday, May 9

To register, call Emily Roth at (503) 235-6272.

Tualatin River Paddle Tours

10 a.m. to 2 p.m. Saturdays, May 8 and June 12

Join Metro naturalist James Davis and members of the Tualatin Riverkeepers for a leisurely paddle upstream and back from one of Metro's future river access points west of Tigard. Explore the habitats of the Tualatin River looking for wildlife and wildflowers. Beaver, nutria and river otter are common in this stretch of the Tualatin and we'll see plenty of evidence of their activities, even if we don't see the critters themselves. Bird life is abundant. After the paddle trip (about 3 hours), participants will be invited to take a brief walk to explore the forested part of the property, good for wildflowers and woodpeckers. Bring drinking water, snacks and waterproof binoculars if you have them. Registration fee for members of the Tualatin Riverkeepers is \$5 and canoe use is free. Non-members pay \$10 to register for the trip with their own boat and can rent a canoe for an additional \$20. Advance registration and payment are required; call Tualatin Riverkeepers at (503) 590-5813. *Metro and Tualatin Riverkeepers*

River Safety Event

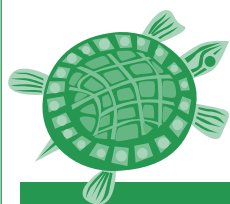
10 a.m. to 3 p.m. Saturday, May 22

Bring the whole family to Metro's Chinook Landing Marine Park and be on your way to a safer summer boating season. Multnomah County Sheriff's River Patrol is hosting this interactive event designed to increase your knowledge of boat and water safety. Information about boat and fishing licensing and boater education requirements will be available. There is a \$4 vehicle entry fee; free with your annual Metro parks pass. *Multnomah County Sheriff's River Patrol*

Canoe the Slough

*6 to 8 p.m. Thursday,
May 20*

Join the Columbia Slough Watershed Council for a free paddle tour of the narrow, tree-lined reaches of the middle slough. The flat, calm waters of the slough are perfect for experienced and novice paddlers alike. Canoes will be provided. Advance registration required; call (503) 281-1132. *Columbia Slough Watershed Council*



NATURE Discoveries

Saturday Afternoons at Jackson Bottom

1 to 3 p.m. every Saturday
Learn about the wildlife, history and geology of Jackson Bottom Wetlands Preserve at a series of workshops at the new Wetlands Education Center. Topics will vary each week; call (503) 681-6278 for a list of upcoming classes. *Jackson Bottom Wetlands Preserve*

Magness Memorial Tree Farm Walks

2 to 3 p.m. every Sunday
Come to the Magness Memorial Tree Farm near Wilsonville for a free guided tour on an easy 1-mile trail. Learn about the forest, its many uses, as well as how to identify plants, animals, bugs and birds. Registration is not required. Meet at the parking lot on Ladd Hill Road. For more information, visit www.worldforestry.org or call (503) 228-1367. *World Forestry Center*


Damascus Hike

*9 a.m. to 1 p.m. Saturday,
March 6*

Join Jayne Cronlund from Three Rivers Land Conservancy, Metro Councilor Brian Newman and local resident Dean Apostol to explore a Metro greenspace on Butler Ridge. Learn the inside scoop on efforts to conserve nature in the Damascus area on this 3-mile hike. Meet at the Lake Oswego public parking lot on the east side of Highway 43 at Foothills Drive. Carpooling will be necessary; compensation of \$2 per rider will go to the drivers. To register, call (503) 699-9825. *Three Rivers Land Conservancy*

Slough 101

*9 a.m. to 1 p.m. Saturday,
March 6*

Do you live, work or play near the Columbia Slough? Come to a hands-on class that will give you an understanding of the unique character, challenges and opportunities of the slough and its watershed. For more information or to register, call (503) 823-2934. *Columbia Slough Watershed Council*  *by arrangement*

Stories about Stumps

*10 to 11:30 a.m. Saturdays,
March 6 and May 15*

Join a park naturalist for a free guided hike through the second growth urban forest at Tryon Creek State Natural Area. Explore the landscape and learn about the history of the park by listening to the stories each tree or stump has to tell. All ages welcome. For more information, call (503) 636-9886 ext. 25. *Tryon Creek State Natural Area*

Commonwealth Lake Bike Trip

*9 a.m. to noon Saturday,
March 13*

Gear up for spring with this popular bike ride through the northeast quadrant of the Tualatin Hills Park and Recreation District. The ride is

approximately 15 miles with some rolling hills; all ages and abilities are welcome. Meet at the Tualatin Hills Nature Park parking lot. Helmets required. For more information, call Hal Ballard at (503) 617-9501. *Tualatin Hills Park and Recreation District Trails Advisory Committee*

Signs of Spring Guided Hikes

*10 to 11:30 a.m. Saturdays,
March 13 and April 24*

Join a park naturalist for a free guided hike through the spring forest at Tryon Creek State Natural Area. Many of the plants at Tryon Creek start to reappear as early as February and March. Buds are opening, ferns are unfurling and flowers are blooming. Learn how to identify the signs of spring. All ages welcome. For more information, call (503) 636-9886 ext. 25. *Tryon Creek State Natural Area*

Clear Creek Tour

*12:30 to 3:30 p.m. Saturday,
March 20*

Join Metro naturalist James Davis for a natural history tour of one of the most beautiful new sites protected by Metro's open spaces acquisition program. This forested tributary of the Clackamas River has excellent water quality and significant wild fish runs. Beaver and river otter sign are common along the creek and there is a good variety of other wildlife and plants on the property. Free. Suitable for adults and children 8 and older. Advance registration required; call (503) 797-1850 option 4. You will receive directions and other information after you register. *Metro*

Spring Babies Guided Hikes

*10 to 11:30 a.m. Saturdays,
March 20, April 17 and
May 22*

Join a park naturalist for a free guided hike through the early spring forest at Tryon Creek State Natural Area. Learn how the animals of this forest care for their babies in the busy springtime months. All ages welcome. For more information, call (503) 636-9886 ext. 25. *Tryon Creek State Natural Area*

Spring Break Nature Camp

*8 a.m. to 4 p.m. Monday
through Friday, March 22-26*
Children ages 7-11 are invited to explore natural science and Oregon history at the Tualatin Hills Nature Park. Learn how ancient peoples and pioneer settlers used the forest, plants and animals to survive here. Cooking and art projects will add to hiking in the park. A mystery guest from the past will visit. Childcare is available after the program. \$125 in-district; \$216.50 out-of-district. To register, call (503) 644-5595. *Tualatin Hills Park and Recreation District*

Spring Break Animal Tracking Adventure

*10 a.m. to 1 p.m. Wednesday,
March 24*

Look through the eyes of the animals as you explore animal tracks at Oxbow Regional Park. We'll discover how to read clues like footprints, skulls and feathers, and try special stealth techniques that will help you see wildlife up close. Then we will try out our new skills on a cross-country hike to the Sandy River, looking for the tracks of wildlife like deer, river otter and red fox. Dress for the weather, wear sturdy shoes and bring a sack lunch in a backpack. Led by volunteer naturalist and tracker Terry Kem, this outdoor class is for children in grades 2-6,

continued

accompanied by an adult. Registration and a program fee of \$3 per person are required in advance. There is a \$4 per vehicle entry fee to the park, payable at the gate. To register, call (503) 797-1850 option 4. *Metro*

Painted Turtle Walks

12:30 to 2 p.m. Saturdays, March 27, April 3 and 17, May 15, 22 and June 5
Oregon's turtles are rare, shy and hard to find, but Smith and Bybee Lakes Wildlife Area is home to one of the largest populations of Western painted turtles in the Northwest. See these beautiful reptiles with the help of Metro naturalist James Davis, who will have small telescopes for a close look. Learn about the natural history of painted turtles and why they are so rare. Suitable for adults and children 5 and older. Meet in the parking area on North Marine Drive. Free. Advance registration required; call (503) 797-1850 option 4. *Metro* ♿

Introduction to Wild Foods

9 a.m. to noon Saturday, April 3
Join wild food expert John Kallas and learn the essentials of wild food use on a hike through Mount Tabor. Become a successful forager, sample plants and get expert advice. \$16. Advanced registration required; call (503) 775-3828. *Wild Food Adventures*

Trillium Festival at Tryon Creek

10 a.m. to 4 p.m. Saturday and Sunday, April 3-4
Come to Tryon Creek State Natural Area to see the trilliums in bloom and celebrate spring. The festival features a native plant sale, guided walks, raffle, music, food and activities for children. Free. For more information, call (503) 636-4398. *Tryon Creek State Natural Area*

Ethnobotany at Oxbow

12:30 to 4 p.m. Sunday, April 4 and Saturday, May 8
Ethnobotany is the study of how humans use plants. This entertaining workshop will include the ethics and safety protocols involved in plant harvest and a walk in the springtime woods of Oxbow Regional Park to get to know plants traditionally used for food, medicine, baskets, etc. You also will receive a resource list for further study. We will create cordage and tea from stinging nettles. Meet at the naturalist office. Program is free with a \$4 entry fee to the park. Advance registration is required; call (503) 797-1850 option 4. *Metro*

Wilderness Edibles of Forest Park

1 to 5 p.m. Sunday, April 4
Join wild food expert John Kallas and explore edible plants of the Wildwood Trail deep in Forest Park. Enjoy the abundance of spring and a diversity of native plants. \$18. Advanced registration required; call (503) 775-3828. *Wild Food Adventures*

Soup on the Slough

11 a.m. to 1:30 p.m. Friday, April 9
You are invited for lunch, slough stories and a tour of Whitaker Ponds. This casual event is open to everyone interested in learning more about the Columbia Slough watershed. Advance registration required. For more information, call (503) 823-2934. *Columbia Slough Watershed Council and Portland Bureau of Environmental Services* ♿

Tax Relief Ride

9 a.m. to noon Saturday, April 10
Pedal the rugged hills of the southwest quadrant of the Tualatin Hills Park and Recreation District along Grabhorn, Miller Hill and Sexton Mountain roads and the Murray Hill Powerline Trail. Enjoy a nutritious treat

at the southern end of the ride before returning. Riders of greater endurance and hill-climbing skills will like this tough 20-mile trip. Meet at the Tualatin Hills Nature Park parking lot. Helmets required. For more information, call Hal Ballard at (503) 617-9501. *Tualatin Hills Park and Recreation District*

Ethnobotany Guided Hikes

10 to 11:30 a.m. Saturdays, April 10 and May 8
Join a park naturalist for a free guided hike through the spring forest at Tryon Creek State Natural Area. Two centuries ago the native people who lived on this land relied on the forest to survive. Learn how Native Americans used this forest for food, shelter, medicine and transportation. All ages welcome. For more information, call (503) 636-9886 ext. 25. *Tryon Creek State Natural Area*

Ancient Forest Walk

1 to 3 p.m. Sunday, April 11
Spend Easter afternoon in an 800-year-old cathedral forest at Oxbow Regional Park. Naturalist Deb Scrivens will guide this easy 1-mile hike. The pace will be slow and quiet to fully appreciate this magnificent forest. Bring binoculars if you have them. Meet in the parking area across from Group Picnic Area A. Best for adults and older children. The hike is free with a \$4 entry fee to the park. Advance registration is required; call (503) 797-1850 option 4. *Metro*

Animal Tracking Workshop

11 a.m. to 2:30 p.m. Saturday, April 17
Oxbow Regional Park is rich in tracks at this time of year, when beaver, otter, fox, mink, mouse and deer often leave clear footprints in the sand. With practice, you can learn to read the ground like a book. We'll also learn to make

plaster casts of animal tracks. Local tracker Terry Kem will introduce you to the basics of track identification and interpretation and the awareness and stealth skills needed to watch wildlife at close range. Suitable for adults and families. Bring a snack and meet at the floodplain parking area. Registration and a \$10 fee are required in advance. There is a \$4 per vehicle entry fee, payable at the gate. To register, call (503) 797-1850 option 4. *Metro*

Earth Day at Tualatin Hills Nature Park

10 a.m. to 1 p.m. Saturday, April 17
Learn to see the forest for the trees at Tualatin Hills Nature Park. Discover how trees are used by people and wildlife. Booths, activities and presentations will share lumber, forestry, recycling, hiking and creature information. Children will not want to miss the papermaking station, face painting booth and hands-on activity area with touchable natural treasures. The annual native plant sale, which runs until 2 p.m., will feature trees, shrubs and flowering plants in a variety of sizes and price ranges. Free and fun for all ages. For more information, call (503) 644-5595. *Tualatin Hills Park and Recreation District* ♿

Fanno Creek Greenway Tours

9 a.m. to noon Saturdays, April 17 and May 15
Tour the completed sections of the 15-mile Fanno Creek Greenway Trail, a multi-use trail planned from the Willamette River in Portland to the Tualatin River in Tualatin. You'll also hear about the action plan to complete the trail. Free. For more information and to register, call Bob Bothman at (503) 244-7206. *Tualatin Hills Park and Recreation District*

Stafford Basin Hike

9 a.m. to noon Tuesday,
April 20

Join Debbie Craig and Sandy Wright from Three Rivers Land Conservancy on an exploration of the new trail system just south of Lake Oswego in a developing greenbelt area. Learn the inside scoop on efforts to conserve nature in the Stafford Basin area on this 4-mile hike. Meet at the Lake Oswego public parking lot on the east side of Highway 43 at Foothills Drive. Carpooling will be necessary; compensation of \$2 per rider will go to the drivers. To register, call (503) 699-9825. *Three Rivers Land Conservancy*

Earth Day at Tryon Creek

2 to 4 p.m. Sunday, April 25

Come to Tryon Creek State Natural Area for an Earth Day celebration. Visit tented science, craft and food stations on the Trillium Trail to learn about snakes. The winners of an essay-writing contest ("Why Snake Has No Legs") will be honored. Free. For more information, call (503) 636-9886 ext. 25. *Tryon Creek State Natural Area* ♿

Wildflower Identification at Oxbow Regional Park

1 to 4 p.m. Sunday, April 25 and Saturday, May 15

Have you ever wondered about trailside wildflowers and wished you knew their names? This class is for you. We will learn how to use plant family information and field guides to aid in identification. Half of this class is indoors, and the other half is an outdoor exploration of a flower-rich trail. For adults and interested teens. Registration and a program fee of \$5 per person are required in advance. There is a \$4 per vehicle entry fee to the park, payable at the gate. To register, call (503) 797-1850 option 4. *Metro*



A young nature lover gets to know Oxbow Regional Park.

The Underwater Guided Hikes

10 to 11:30 a.m. Saturdays,
May 1 and May 29

Join a park naturalist for a free guided hike to explore Tryon Creek. Experience what life would be like underwater as a fish, crawdad or even a salamander. All ages welcome. For more information, call (503) 636-9886 ext. 25. *Tryon Creek State Natural Area*

Mother's Day Meander

9 a.m. to noon Saturday,
May 8

This guided ride begins at the Tualatin Hills Nature Park Interpretive Center and loops through many of the parks in Beaverton. This is an easy, "class A" 12-mile ride. Helmets are required and water is recommended. For more information, call Hal Ballard at (503) 617-9501. *Tualatin Hills Park and Recreation District*

Mother's Day Birds and Blooms

1 to 3 p.m. Sunday, May 9

Instead of bringing flowers to Mom this Mother's Day, why not bring Mom to the flowers? Stroll along the forest trails at Oxbow Regional Park and learn about our

common wildflowers with naturalist Deb Scrivens. And what better accompaniment than the songs of the birds. The 1-mile walk will be at a leisurely pace since we'll be looking at and listening to everything. Meet at the naturalist office. Program is free with a \$4 per vehicle entrance fee to the park. Advance registration is required; call (503) 797-1850 option 4. *Metro*

Wetlands 101 Seminar and Field Trip

5:30 to 8:30 p.m. Thursday,
May 13

Join us for Wetlands 101, a two-part seminar designed to give both a classroom and a hands-on overview of wetlands ecology and regulations. The evening seminar is followed by a field trip from 9 a.m. to noon on Saturday, May 15. Seminar topics include wetland function and values, wetland mitigation and regulation. Field trip activities include digging and examining wetland soils, viewing wildlife, and plant identification. Participants must register for both the workshop and the field trip; call Sarah Murphy at (503) 281-1132. *Columbia Slough Watershed Council* ♿ *by arrangement*

Sandy River Spey Clave

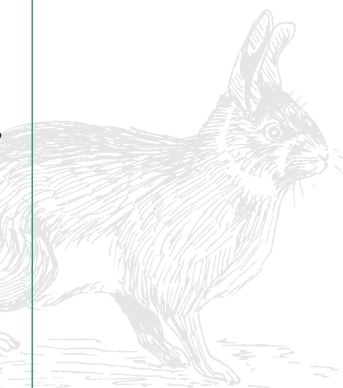
6:30 a.m. to sunset
Saturday and Sunday,
May 15-16

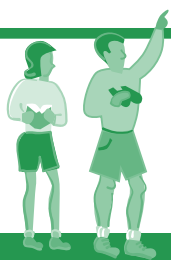
Come to Oxbow Regional Park for a gathering of anglers interested in two-hand fly rod fishing. There will be casting demonstrations on the water as well as fly tying, leader making and fly line modification demonstrations in the covered pavilion. Overnight camping is available in the park on a first-come, first-served basis for \$15 per night (up to six people per site). Program is free with a \$4 entrance fee to the park. For more information, call Mark Bachman at The Fly Fishing Shop at (503) 622-4607. *Metro* and *The Fly Fishing Shop*

Canemah Bluff

9:30 to 11:30 a.m. Sunday,
May 16

Join Metro naturalist Deb Scrivens on an exploration of Canemah Bluff, a Metro open space overlooking the Willamette River just south of Oregon City. We will identify wildflowers and native conifers, including the famous Pacific yew tree. Our mid-morning start will let us see some of the spring bird activity that begins at dawn. Wear shoes that can get wet and muddy. For all ages; children must be accompanied by an adult. Free. Advance registration required; call (503) 797-1850 option 4. You will receive directions to the meeting place and other details after you register. *Metro*





BIRD Watching

See page 3 for more bird watching activities.

Lunch with the Birds noon to 1 p.m. every Wednesday

Meet a Jackson Bottom naturalist and spend your lunch hour learning to identify migrating waterfowl and other cool birds at Jackson Bottom Wetlands. Spotting scopes, binoculars and field guides will be provided. Meet at the north viewing shelter next to the Clean Water Services sewage treatment plant on Highway 219 south of Hillsboro. Free. For more information, call (503) 681-6278. *Jackson Bottom Wetlands Preserve*

Introduction to the Language of Birds 9:30 a.m. to 1 p.m. Saturday, March 13

What can you learn from birds as they communicate with each other and other wild animals? Join naturalists Elisabeth Neely and James Davis at Oxbow Regional Park for this introduction to the fascinating art of interpreting the meaning of bird songs and calls, using methods learned from well-known tracker Jon Young. This popular class combines modern birding tools and techniques with ancient awareness skills known to native people worldwide. Class will be indoor/outdoor; bring a notepad, sack lunch and something to sit on in the woods. Meeting location is dependent on weather; ask at the gate. Registration and a program fee of \$5 per person are required in advance. There is a \$4 per vehicle entry

fee to the park, payable at the gate. To register, call (503) 797-1850 option 4. *Metro*

Smith and Bybee Lakes Spring Bird Walks

9 to 11 a.m. Saturdays,
March 27, April 3 and 17,
May 15 and 22, and June 5
Spring brings more than 25 different songbirds to join the resident birds nesting at Smith and Bybee Lakes Wildlife Area. Linger winter waterfowl and birds of prey add to the hot birding action at the wildlife area in spring. Meet Metro naturalist James Davis in the wildlife area parking lot on North Marine Drive. Learn to identify birds by sight and songs. Bring your binoculars or borrow a pair of ours. Free. Advance registration is required; call (503) 797-1850 option 4. *Metro* ♿

Bird Watching Basics for Beginners

7 to 9:30 p.m. Thursday,
April 1
Metro naturalist James Davis has been getting beginning bird watchers off to a good start for more than 20 years. Discuss the basics of bird identification, talk about the best field guides and binoculars and watch a slide show of the "top 20" birds of the Portland metropolitan area. This class is excellent preparation for Metro's Saturday bird watching trips and other bird classes. For adults and teens. Meet in room 370 at Metro Regional Center, 600 NE Grand Ave., Portland. Registration and payment of \$8 per person are required in advance; call (503) 797-1850 option 4. *Metro* ♿

Bird Migration Walks

7 to 8:30 a.m. Tuesdays,
April 6 through June 1
Enjoy an early morning bird walk at Tualatin Hills Nature Park with birder Paul Sullivan. Look and listen for birds during the peak of spring migration. Meet in front of the interpretive center. The walks are free and will last until people have to leave for work. For more information, call (503) 644-5595. *Tualatin Hills Park and Recreation District*

Tualatin River Watershed Shorebirds

6:30 to 9 p.m. Wednesday,
April 21
Join instructor Doug Robberson and learn about the birds of the Tualatin River watershed. This indoor evening session (location to be determined) will be followed by a Saturday morning field trip at Gotter Bottom on April 24. \$20 for Tualatin Riverkeepers; \$30 for non-members. For more information or to register, call (503) 590-5813. *Tualatin Riverkeepers*

Spring Birds Identification Class

7 to 9:30 p.m. Thursday,
April 22
Spring brings thousands of migrating birds to the region. Get ready for some great spring birding with this crash course in identifying spring migrants and summer breeders. Metro naturalist James Davis will show slides and play recordings of bird songs and simplify what seems like a confusing variety of birds to many beginners. This class is excellent preparation for bird walks at Smith and Bybee Lakes Wildlife Area. For adults and teens. Meet in room 370 at Metro Regional Center, 600 NE Grand Ave., Portland. Registration and payment of \$8 per person are required in advance; call (503) 797-1850 option 4. *Metro* ♿

Spring Migration on Mt. Talbert

10 a.m. to noon Saturday,
April 24
Be among the first bird watchers to catch the action during the peak of spring migration at Mount Talbert in Clackamas County. Join Metro naturalist James Davis at this greenspace acquired with funds from the open spaces, parks and streams bond measure. Forested hills like this one are hot spots for warblers, tanagers, orioles, vireos, flycatchers and other spring migrants moving through the region. There are no developed trails or other facilities; some walking will be on rough ground. Bring your binoculars or borrow a pair of ours. Free. Advance registration required; call (503) 794-8081. You will receive directions and other information after you register. *Metro and North Clackamas Parks and Recreation District*

Warblers of Oregon

7 to 9:30 p.m. Thursday,
April 29
One of the most colorful and musical groups of birds to arrive in spring is the warblers. The different species in the Portland area can be quite confusing to beginning and experienced birders alike. Let Metro naturalist James Davis make warbler identification easier for you. This class takes place near the peak of warbler migration so you can get out right away and practice your new skills. For adults and teens. Meet in room 370 at Metro Regional Center, 600 NE Grand Ave., Portland. Registration and payment of \$8 per person are required in advance; call (503) 797-1850 option 4. *Metro* ♿

**Song of the Land:
Listening to the
Messages of Birds**

*10 a.m. to 4 p.m. Saturday,
May 15*

Each morning, the birds all around us are speaking with one another in an ancient and beautiful language of song and call. Bear and bobcat, fox and deer, rabbit and robin are listening, and our own ancestors knew to heed the warnings of the birds, but to most modern-day people, this is a language lost to our understanding. In this class, recover the skills to understand this wonderful element of nature, and to interpret what you see and hear from birds that live in your own backyard. Discover an exciting window into nature and a

wonderful way to quiet yourself and listen to the mysteries and messages of the land. Instructed by naturalists Terry Kem and Elisabeth Neely, this class is suitable for all levels of experience. The location will be within an hour's drive of Portland. Registration and program fee of \$20 per person are required in advance; call (503) 452-4483. *The Earth and Spirit Council*

**Birding the Killin
Wetlands**

*10:30 a.m. to 12:30 p.m.
Sunday, May 16*

The Killin Wetlands in Banks, known to local birders for years as Cedar Canyon Marsh, is a great place to see (or at least hear) three very hard to find marsh birds –

American bittern, sora and Virginia rail. Many other common wetland birds are also seen here this time of year, making it a regular stop on Audubon's Birdathon. Join Metro naturalist James Davis for the first public bird watching trip to this special place that has been protected by Metro's open spaces acquisition program. Free. Advance registration required; call (503) 797-1850 option 4. You will receive directions and other information after you register. *Metro*

**Tualatin River Watershed
Birds of Summer**

*6:30 to 9 p.m. Wednesday,
June 2*

Join instructor Doug Robberston and learn about the birds of the Tualatin River watershed. This indoor evening session (location to be determined) will be followed by a Saturday morning paddle trip from Cook Park in Tigard. \$20 for Tualatin Riverkeepers; \$30 for non-members. For more information or to register, call (503) 590-5813. *Tualatin Riverkeepers*



**NATURAL
Gardening**

Green Grass Naturally
*10 a.m. to noon Saturday,
March 20*

The grass doesn't always have to be greener on the other side. Learn how to grow beautiful grass without all of the chemicals and maintenance at Tualatin Hills Nature Park. Use less water and fertilizer, mow less and enjoy the extra time you will have to enjoy your beautiful lawn. \$9 in-district; \$15 out-of-district. For more information, call (503) 644-5595. *Tualatin Hills Park and Recreation District*



Backyard Habitats
2 to 4 p.m. Saturday, April 3

Come to Tualatin Hills Nature Park and discover ways to bring birds and other wildlife into your garden with attractive native plants in enticing combinations and arrangements. Find out about creative water sources that will keep the critters returning throughout the year. \$8 in-district; \$14 out-of-district. For more information, call (503) 644-5595. *Tualatin Hills Park and Recreation District*



**Wildflowers of the
Columbia Gorge**

*7 to 9 p.m. Wednesday,
April 7*

Join photographer and biology teacher Paul Slichter for an armchair foray into the wildflowers of the Columbia River Gorge. See beautiful photographs of wildflowers and find out where they can be found and when they bloom. Paul also will offer suggestions about wildflowers that are suitable for use

in Willamette Valley gardens. \$10. To register, call (503) 636-4112 ext. 22. *Berry Botanic Garden*



Hypertufa Planter Party
*6 to 9 p.m. Tuesdays, May 4
and 18*

What the heck is hypertufa? It is the art of creating antique-looking planters from cement, sand and peat moss. Picture the weathered aggregate planters in English gardens. Join Metro staff for a hands-on workshop to create these planters for your spring garden. In the first session, we will mix and form the planters; during the second session, we will plant them with spring color spots. \$25 per planter (includes materials and plants). Cardboard boxes are used for forms (computer paper boxes work best). Bring your own or use some of ours. Meet at the Curry Maintenance Building at Blue Lake Regional Park. Advance registration required; call (503) 665-6918. *Metro*



**Wild Gourmet Garden
Vegetables**

*9 a.m. to 1 p.m. Saturday,
May 15*

Tired of pulling garden weeds? Get revenge by eating them. Learn which wild vegetables are edible and how to prepare them. Meet at Sauvie Island to gather, prepare and eat a wild gourmet salad. Bring a salad bowl and a fork. \$25. To register, call (503) 775-3828. *Wild Food Adventures*

For information
about Metro's natural
gardening seminars
and other resources,
visit www.metro-region.org.

Summer jobs in Metro parks

During the busy months of summer, Metro adds a small army of temporary rangers, fee collectors and grounds maintenance staff to its ranks. If you're looking for a summer job and enjoy working outside, consider joining the fun, fast-paced atmosphere at Metro's parks, greenspaces, marine facilities and pioneer cemeteries. You will get to

work at beautiful places with people who love their jobs, and you'll receive on-the-job training in customer service, law enforcement, building and grounds maintenance, and money handling.

Approximately 40 temporary full-time and part-time positions are available for three to six months beginning this spring. Wages range from \$8.25-\$9.75 per hour. You must be at least 18 years old and possess a valid driver's license. For more information and application materials, call (503) 797-1570.

Job descriptions

Grounds and building maintenance

Assists in providing a safe and enjoyable experience for visitors. Performs ground maintenance, including mowing, trimming, weeding, irrigation, garbage removal and cleaning restrooms.

Fee collector – Performs cash handling and reconciliation, answers questions and distributes park information.

Night ranger – This position is directly responsible for after-hours security at Oxbow and Blue Lake regional parks. Tasks include irrigation, garbage/litter removal, restroom maintenance, park patrol and public relations.

Lake ranger – Requires current lifeguard, CPR and first aid certification. Tasks include enforcing swim beach, boating and park regulations, and keeping records of incidents and accidents.

Calendar at a glance

Weekly

Friends of Trees weekend work days, pg. 7
Saturday afternoons at Jackson Bottom, pg. 9
Magness Memorial Tree Farm walks, pg. 9
Lunch with the birds, pg. 12
Bird migration walks, pg. 12

March

6 Damascus hike, pg. 9
6 Slough 101, pg. 9
6 Blackberry pull at Bauman Park, pg. 7
6 Stories about stumps, pg. 9
11 Owls of Oregon, pg. 3
13 Signs of spring guided hike, pg. 9
13 Introduction to the language of birds, pg. 12
13 Powell Butte trail maintenance, pg. 7
13 Commonwealth Lake bike trip, pg. 9
13 SOLV restoration planting, pg. 7
14 Cooper Mountain birds and wildflowers, back cover
17 New volunteer orientation at Metro, pg. 7
20 Errol Heights Wetland restoration, pg. 7
20 Green grass naturally, pg. 13
20 Clear Creek Canyon tour, pg. 9
20 Spring babies guided hike, pg. 9
20 Woods Memorial Natural Area restoration, pg. 7
20 Tualatin Hills Nature Park project day, pg. 7
20 Mayor's Work Day at Mary S. Young State Park, pg. 7
20 Smith and Bybee Lakes Wildlife Area paddle trip, pg. 8

20 SOLV restoration planting, pg. 7
21 Tualatin Hills Nature Park project day, pg. 7
21 Stewardship day at Smith and Bybee Lakes Wildlife Area, pg. 7
22 Spring break nature camp, pg. 9
24 Spring break animal tracking adventure, pg. 9
27 Painted turtle walk, pg. 10
27 Butterfly Park planting, pg. 7
27 Spring bird walk at Smith and Bybee Lakes Wildlife Area, pg. 12
27 Great Oregon spring beach cleanup, pg. 7

April

1 Bird watching basics for beginners, pg. 12
3 Painted turtle walk, pg. 10
3 Spring bird walk at Smith and Bybee Lakes Wildlife Area, pg. 12
3 Introduction to wild foods, pg. 10
3 Backyard habitats, pg. 13
4 Ethnobotany at Oxbow, pg. 10
4 Wilderness edibles of Forest Park, pg. 10
3-4 Trillium Festival at Tryon Creek, pg. 10
7 Wildflowers of the Columbia Gorge, pg. 13
9 Soup on the Slough, pg. 10
10 Tax relief bike ride, pg. 10
10 Arbor Day tree planting and barbecue, pg. 7
10 Powell Butte trail maintenance, pg. 7
10 Ethnobotany guided hike, pg. 10
11 Ancient forest walk at Oxbow, pg. 10
15 Bird watching basics for beginners, pg. 3
17 Errol Heights Wetland restoration, pg. 7
17 Painted turtle walk, pg. 10
17 Animal tracking workshop at Oxbow, pg. 10

17 Spring babies guided hike, pg. 9
17 Smith and Bybee Lakes Wildlife Area paddle trip, pg. 8
17 Spring bird walk at Smith and Bybee Lakes Wildlife Area, pg. 12
17 Woods Memorial Natural Area restoration, pg. 7
17 Fanno Creek Greenway Trail walk, pg. 10
17 Mayor's Work Day at Mary S. Young State Park, pg. 7
17 Earth Day at Tualatin Hills Nature Park, pg. 10
18 Cooper Mountain birds and wildflowers, back cover
20 Stafford Basin hike, pg. 11
21 Tualatin River watershed shorebirds, pg. 12
21 New volunteer orientation at Metro, pg. 7
22 Spring birds identification class, pg. 12
24 SOLV IT, pg. 8
24 Spring migration on Mt. Talbert, pg. 12
24 Signs of spring guided hike, pg. 9
25 Wildflower identification at Oxbow Regional Park, pg. 11
25 Bird watching at Orchard Park, pg. 3
25 Earth Day at Tryon Creek, pg. 11
29 Warblers of Oregon, pg. 12
29 Geology and botany of Camassia Nature Preserve, pg. 4

May

1 The underwater guided hike, pg. 11
2 Gotter Bottom tour, pg. 4
4 Hypertufa planter party, pg. 13
6 Evening bird walk at Orchard Park, pg. 3
8 Powell Butte trail maintenance, pg. 7
8 Ethnobotany guided hike, pg. 10
8 Ethnobotany at Oxbow, pg. 10
8 Mother's Day bike ride, pg. 11

8 Tualatin River paddle tour, pg. 8
8 No Ivy Day, pg. 8
9 Smith and Bybee Lakes Wildlife Area paddle trip, pg. 8
9 Mother's Day birds and blooms, pg. 11
13 Wetlands 101 seminar and field trip, pg. 11
15 Spring bird walk at Smith and Bybee Lakes Wildlife Area, pg. 12
15 Song of the land: listening to the messages of birds, pg. 13
15 Stories about stumps, pg. 9
15 Errol Heights Wetland restoration, pg. 7
15 Fanno Creek Greenway Trail walk, pg. 11
15 Woods Memorial Natural Area restoration, pg. 7
15 Wildflower identification at Oxbow Regional Park, pg. 11
15 Wild gourmet garden vegetables, pg. 13
15 Mayor's Work Day at Mary S. Young State Park, pg. 7
15 Painted turtle walk, pg. 10
16 Canemah Bluff tour, pg. 11
16 Birding the Killin Wetlands, pg. 13
16 Stewardship day at Smith and Bybee Lakes Wildlife Area, pg. 7
19 New volunteer orientation at Metro, pg. 7
20 Evening bird walk at Orchard Park, pg. 3
20 Canoe the Slough, pg. 9
21-22 Down by the Riverside, pg. 8
22 Spring bird walk at Smith and Bybee Lakes Wildlife Area, pg. 12
22 Wilsonville WERK Day, pg. 8
22 Painted turtle walk, pg. 10
22 Spring babies guided hike, pg. 9
22 River safety event, pg. 8
23 Cooper Mountain birds and wildflowers, back cover
29 The underwater guided hike, pg. 11

See you there!

Metro regional parks, greenspaces and facilities

Blue Lake Regional Park provides archery, volleyball, softball, horseshoes, playgrounds, food concessions, bike and boat rentals, swimming, fishing and large picnic shelters perfect for family reunions and company picnics. Bikers, runners and walkers enjoy the trails along the lake and throughout the park. The Lake House is an elegant site for weddings and other special events.

Location: Between Marine Drive and Sandy Boulevard off North-east 223rd Avenue. From I-84, take the Fairview exit (14) and go north on 207th Avenue to Sandy Boulevard. Turn right onto Sandy and travel east to 223rd and turn left. Proceed north to Blue Lake Road and the park.

Entrance fee: \$4 per car and \$7 per bus.

Oxbow Regional Park, a 1,200-acre natural area park located within the wild and scenic Sandy River Gorge, offers the opportunity to walk through an old-growth forest or watch fall chinook salmon swim upstream to spawn. The river draws swimmers, rafters, kayakers and anglers. Hiking trails, wooded campsites, reservable picnic areas, horse trails, playgrounds and play fields are also available.

Location: Eight miles east of Gresham. From I-84, take the Troutdale exit (17). Go past the truck stop to the light. Turn right on 257th, go 3 miles to Division Street. Turn left onto Division. Follow the signs 6.5 miles and turn left. Follow the road to the park.

Entrance fee: \$4 per car and \$7 per bus.

Howell Territorial Park on Sauvie Island is a scenic blend of natural and cultural history. The Oregon Historical Society provides interpretive tours of a pioneer house and agricultural museum on summer weekends. Picnickers and birdwatchers enjoy this idyllic site, which also includes nine acres of wetland and surrounding pastoral land. There are two rustic areas that can be reserved for small picnics or weddings.

Location: Take Highway 30 north past Linnton to the Sauvie Island Bridge. Cross the bridge, proceed north approximately 1 mile and turn right onto Howell Park Road.

Smith and Bybee Lakes Wildlife Area is the largest protected wetland within an American city. Home to beaver, river otter, black-tailed deer, osprey, bald eagles and Western painted turtles, this 2,000-acre wildlife area offers a paved trail with two wildlife viewing platforms. Non-motorized boats are welcome.

Location: On Marine Drive between the Expo Center and Kelley Point Park. Take I-5 to exit 307. Go west on N. Marine Drive for 2.2 miles. Turn left at the large brown and white wildlife area sign.

Beggars-tick Wildlife Refuge, a 20-acre greenspace located along the Springwater Corridor Trail, was named after a species of native sunflower. The refuge is home to a variety of native plant species and wildlife, and provides open water for migratory waterfowl in the winter.

Location: Southeast 111th Avenue, just north of Foster Road. Also accessible from the Springwater Corridor Trail.

Pioneer cemeteries in Multnomah County offer a unique look into the history of the region and are managed as operating facilities. Dating back as early as 1851, 14 pioneer cemeteries offer scenic tranquility and a glimpse into the past.

Chinook Landing Marine Park, a 67-acre marine park with six launching lanes on the Columbia River, is the largest public boating facility in Oregon. The park offers picnic and viewing areas, wetland and wildlife habitat, disabled-accessible docks, restrooms and a seasonal river patrol station.

Location: Adjacent to Blue Lake Regional Park on Marine Drive.

Entrance fee: \$5 per vehicle.

M. James Gleason Memorial Boat Ramp is a convenient public boat launch on the Columbia River, minutes from downtown Portland. Amenities include launch lanes, boarding docks, restrooms, river maps and a river patrol office.

Location: Northeast 43rd Avenue and Marine Drive.

Entrance fee: \$4 per vehicle.

Sauvie Island Boat Ramp enables boaters to enjoy the quiet waters and wildlife of Multnomah Channel. Picnic tables, parking and restrooms are available.

Location: At the junction of Burlington Ferry and Sauvie Island roads.

Glendoveer Golf Course provides challenging play for every level with two 18-hole golf courses. A 2-mile fitness trail along the perimeter of the course draws joggers and walkers to the natural setting. There are also tennis and racquetball courts, a driving range and a restaurant.

Location: 140th and Northeast Glisan Street.

Note: In order to protect wildlife habitat, and for their own safety, **pets are not permitted** at any Metro park or greenspace.

Except for Howell Territorial Park and Glendoveer Golf Course, the parks and facilities above each provide some wheelchair access. For more specific accessibility information, call (503) 797-1728.

Reserve early for group picnics

Reservations are now being accepted for group picnics at Oxbow and Blue Lake regional parks and Howell Territorial Park for 2004. Make reservations by calling (503) 797-1850 option 2. Detailed information about the parks and picnic areas is available on the Metro web site at www.metro-region.org/parks.

Information numbers

General number
(503) 797-1850

Picnic reservations
(503) 797-1850 option 2

Registration for Metro activities
(503) 797-1850 option 4

Blue Lake Regional Park
(503) 665-4995

The Lake House
(503) 667-3483

Oxbow Regional Park
(503) 663-4708

Howell Territorial Park
(503) 665-6918

James Bybee House
(503) 222-1741

Smith and Bybee Lakes Wildlife Area
(503) 797-1515

Marine facilities
(503) 665-6918

Glendoveer Golf Course
(503) 253-7507

Pioneer cemeteries
(503) 797-1709



Cooper Mountain happenings

Nature park takes shape on Cooper Mountain

Together with the public, Metro and its partners have begun planning for a nature park on Cooper Mountain. With funds from the open spaces, parks and streams bond measure, Metro has acquired 256 acres on Cooper Mountain, including the summit and southern slope of the mountain. Just minutes from downtown Beaverton and the bustle of urban Washington County, the site is home to many native plants and wildlife and offers stunning views of the Tualatin Valley and Chehalem Mountains.

Planning for public access to the site will strike a balance between protecting Cooper Mountain's natural resources and providing nature-based recreation opportunities.

Stay in touch with the planning process by visiting www.metro-region.org (go to "Quicklinks" and select "Cooper Mountain master plan").

To be added to the Cooper Mountain mailing list, call (503) 797-1774.

If you would like to get a sneak peak at Cooper Mountain, join a Metro naturalist for a Sunday afternoon nature walk.

Cooper Mountain Birds and Wildflowers

12:30 to 4 p.m. Sundays, March 14, April 18 and May 23

The tale of the Cooper Mountain landscape includes volcanoes and wildfire, Oregon white oaks and perched wetlands, and rare birds and wildflowers. Recent controlled burns have encouraged a proliferation of native wildflowers, including a rare larkspur. Get a sneak preview of this future nature park with a Metro naturalist. We may spot a savannah sparrow, a lesser goldfinch, a Western bluebird or an elusive lazuli bunting. Bring a snack and plenty of water for this stroll. Terrain is steep and rough in some places. For adults and children 6 or older; children must be accompanied by an adult. Free. Advance registration required; call (503) 797-1850 option 4. You will receive directions to the meeting place and other details after you register.



METRO

PEOPLE PLACES
OPEN SPACES

600 NE Grand Ave.
Portland, OR 97232-2736

ADDRESS SERVICE REQUESTED

Presorted Standard
U.S. Postage Paid
Portland, OR
Permit No. 1246

