

# GreenScene

Discover nature in neighborhoods

SUMMER 2005



- Bird watching
- Volunteer ventures
- Nature discoveries
- Paddle trips



METRO



## Dear GreenScene Reader:



If I were to ask you what you liked about living in the Metro region, I know there would be something green in your answer. Whether it's the view of Mount Hood when you leave your house or a visit to Tualatin Hills Nature Park or a walk on the Springwater Corridor, there's something green here that's special for you.

As Oregonians, we don't take these natural riches for granted. We know that fish and wildlife need protection as the region grows. That's why I am pleased to announce that on April 7, 2005, Councilor Carl Hosticka and I introduced a resolution to launch the Nature in Neighborhoods initiative. This resolution directs staff in every Metro department to work in more effective ways to coordinate and expand Metro's investments in conservation education and habitat restoration.

A small signal of this change is the new cover that begins with this edition of GreenScene. Readers have told us over and over how GreenScene helps them connect to nature through learning, stewardship and exploration. We know you have come to rely on GreenScene as your comprehensive guide to nature activities and volunteer opportunities all over the region. GreenScene will continue to provide that service while bringing you news and stories from the front lines of the region-wide effort to protect and restore nature in neighborhoods.

The 25 cities and three counties that make up the Metro region share in the benefits and the responsibilities of enjoying and protecting nature. Wherever you live and whatever your level of involvement and interest, Nature in Neighborhoods is a promise from the Metro Council that as the region grows we will work to keep more green in the landscape around us, for now and for the future.

David Bragdon  
Metro Council President



### Metro

#### People places • open spaces

Clean air and clean water do not stop at city limits or county lines. Neither does the need for jobs, a thriving economy and good transportation choices for people and businesses in our region. Voters have asked Metro to help with the challenges that cross those lines and affect the 25 cities and three counties in the Portland metropolitan area.

A regional approach simply makes sense when it comes to protecting open space, caring for parks, planning for the best use of land, managing garbage disposal and increasing recycling. Metro oversees world-class facilities such as the Oregon Zoo, which contributes to conservation and education, and the Oregon Convention Center, which benefits the region's economy.

#### Metro's web site

[www.metro-region.org](http://www.metro-region.org)

### Your Metro representatives

#### Metro Council President

David Bragdon

#### Metro Councilors

Rod Park, District 1

Brian Newman, District 2

Carl Hosticka, District 3

Susan McLain, District 4

Rex Burkholder, deputy

council president, District 5

Robert Liberty, District 6

#### Auditor

Alexis Dow, CPA

#### On the cover

Young nature lovers on the banks of Clear Creek and a meadowhawk dragonfly.

#### Photographs by

C. Bruce Forster, Chris Hagel, Elisabeth Neely, Lora Price, Lydia Rich, Tualatin Hills Nature Park staff and Curt Zonick.

#### Illustrations by

Antonia Manda

**If you have a disability** and need accommodations, call (503) 797-1850, or call Metro's TDD line at (503) 797-1804. If you require a sign interpreter, call at least 48 hours in advance. Activities marked with this symbol are wheelchair accessible:

#### Bus and MAX information:

(503) 238-RIDE (238-7433).

To be added to the mailing list or to make any changes, call (503) 797-1850 option 3.



## Protecting nature in neighborhoods: our opportunity

**W**e all share in the benefits and responsibilities of conserving, protecting and restoring the nature around us. The Metro Council has proposed the Nature in Neighborhoods initiative to bring people and government together to ensure a healthy urban ecosystem.

The Nature in Neighborhoods initiative will align successful conservation programs at Metro and around the region behind a single, strategic effort to protect clean water and healthy natural areas for fish, wildlife and people.

Nature in Neighborhoods will add more hands-on capacity for conservation education and habitat restoration. Metro is planning for a new funding measure to acquire open spaces and high-value habitat from willing sellers. Metro will also offer assistance and incentives to conservation groups, developers, businesses and homeowners to protect watersheds and wildlife habitat through voluntary efforts.

With Nature in Neighborhoods, Metro is taking a leadership role in working with other governments and nonprofit organizations to implement the following activities:

**Conservation education** – builds on Metro’s successful track record of partnering with others to restore key wetland, streamside and upland sites and provides programs that educate the public about the value of natural areas.

**Acquisition** – creates a funding source to acquire critical fish and wildlife habitat in the urban area. (The Metro Council intends to place a funding measure before the voters in 2006.)

**Restoration** – supports individual, nonprofit and government-sponsored restoration and conservation efforts in regional watersheds.

**Habitat-friendly development practices** – encourages innovative site design, new materials and engineering techniques.

## Open spaces, treasured places

*Just minutes from your door, gems of green, breathtaking views, rushing rivers and quiet meandering streams await. Meadows, forests, stream banks and butte-tops provide lasting opportunities for people to connect with nature in their neighborhoods.*

In 1995, voters in the Portland metropolitan region made an important investment for the future with their overwhelming support of Metro’s open spaces, parks and streams bond measure. Ten years later, more than 8,000 acres of valuable natural areas and nearly 74 miles of stream and river frontage have been protected. More than 100 local park projects in neighborhoods across the region offer biking, hiking and wildlife watching opportunities close to home. By protecting clean air and water and fish and wildlife habitat, this highly successful land conservation effort will benefit the region for generations to come.

As we mark the 10th anniversary of Metro’s open spaces acquisition program, you’ll have more opportunities than ever to get to know the nature of the region. As always, GreenScene will be your guide. On these pages, and in a special fall edition, you’ll find hundreds of ways to celebrate “open spaces, treasured places.”

**Flexible development standards** – establishes a consistent regional standard for fish and wildlife habitat protection that provides additional support for improving water quality. Promotes planning for growth in new urban areas to better protect natural areas.

**Monitoring and reporting** – measures the progress made in protecting and restoring habitat. Reports results to all partners to use to refine the program.

For more information, visit [www.metro-region.org/nature](http://www.metro-region.org/nature) or call the Nature in Neighborhoods hotline at (503) 797-1555.



# Around the campfire at Oxbow Regional Park

**B**ring the family to Oxbow Regional Park for weekend evening campfire stories, nature programs and old-fashioned entertainment. On Friday nights, we feature live music in the park, and on Saturday nights we bring in fascinating natural history presentations and master storytellers.

Campfire programs are held in the outdoor forest amphitheater across from the campground. They are a great way to spend the evening when you're camping at Oxbow, but you don't have to camp to enjoy them. Although the park closes at sunset, those who attend the campfire program and want to leave afterward will be let out at the gate by the rangers. Park in the designated area near the boat ramp. Programs are free, but there is a \$4 per vehicle entry fee to the park. No registration required. For more information, call Metro at (503) 797-1850.



## **Jen and Wendy's eclectic tunes**

8:30 to 9:30 p.m. Friday,  
July 1

The whole family will enjoy Jen and Wendy's theatrical performance style and vocal harmonies, with trailside songs featuring bears, bugs and the great outdoors.

## **Birds of prey of the Pacific Northwest**

8:30 to 9:30 p.m. Saturday,  
July 2

Live birds of prey visit the campfire circle from Hawk Haven. Find out cool raptor facts and see these beautiful birds up close.

## **The folk music of Juliet Wyers**

8:30 to 9:30 p.m. Friday,  
July 8

Folk/pop singer and songwriter Juliet Wyers' vibrant music and lyrics are a pleasure to the ears.

## **Salmon stories, bear tales and the legend of the swallowing monster**

8:30 to 9:30 p.m. Saturday,  
July 9

Join master storyteller Will Hornyak for an entrancing evening of Northwest myths, legends and tall tales.

## **Old-time bluegrass tunes**

8:30 to 9:30 p.m. Friday,  
July 15

Bluegrass musicians Greg Stone and Lon Jones will play guitar and mandolin and sing old-time tunes around the campfire. Tap your feet, dance or just sit back and enjoy the music.

## **The amazing nightlife of bats**

8:30 to 9:30 p.m. Saturday,  
July 16

What's faster than a speeding mosquito, more powerful than bug repellent and able to navigate the night? Bats! Naturalist Kim Wilson shares great bat slides while we watch and listen for real live bats.

## **Fiddlin' in the park with Greg Clarke**

8:30 to 9:30 p.m. Friday,  
July 22

Join Metro Councilor Rod Park as musician Greg Clarke brings us old-time tunes around the campfire. Enjoy the sounds of banjo, fiddle and mandolin among the trees. It's a contagious performance sure to get your toes tapping.

## **Slithering tales**

8:30 to 9:30 p.m. Saturday,  
July 23

Discover the fascinating world of snakes, lizards and turtles. Metro naturalist James Davis reveals the truth behind the many myths about reptiles. Some live reptiles will join the program.

## **Old-time music with Dave and Will Elliott**

8:30 to 9:30 p.m. Friday,  
July 29

This father and son duet returns to Oxbow with great bluegrass tunes. Enjoy old-style duets and sing along with some favorites.

## **Discovering ethnobotany of the Northwest**

8:30 to 9:30 p.m. Saturday,  
July 30

Learn how plants have been used for thousands of years for food and medicine with naturalists Natalie Norman and Miriam Burk from Portland Parks and Recreation. Get to know several common plants to use as natural insect repellent and more.

## **Old-time bluegrass tunes**

8 to 9 p.m. Friday, Aug. 5  
See July 15 description.

## **Birds of prey of the Pacific Northwest**

8 to 9 p.m. Saturday, Aug. 6  
See July 2 description.

## **Fiddlin' in the park with Greg Clarke**

8 to 9 p.m. Friday, Aug. 12  
See July 22 description.

## The amazing nightlife of bats

8 to 9 p.m. Saturday, Aug. 13  
See July 16 description.

## Old-time music with Dave and Will Elliott

8 to 9 p.m. Friday, Aug. 19  
See July 29 description.

## Discovering ethnobotany of the Northwest

8 to 9 p.m. Saturday, Aug. 20  
See July 30 description.

## Jen and Wendy's eclectic tunes

8 to 9 p.m. Friday, Aug. 26  
See July 1 description.

## Storytelling to the beat of the drum

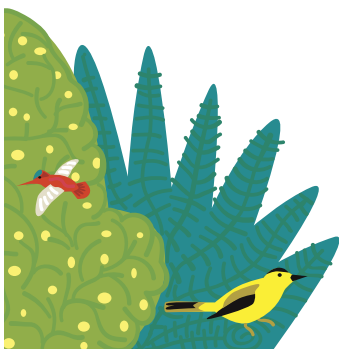
8 to 9 p.m. Saturday, Aug. 27  
Gordon Munro returns with his special blend of the ancient arts of drumming and storytelling. You'll enjoy folk stories from different cultures around the world.

## The music of Juliet Wyers

8 to 9 p.m. Friday, Sept. 2  
See July 8 description.

## Shadow puppets

8:30 to 9:30 p.m. Saturday, Sept. 3  
Behind Oregon Shadow Theatre's illuminated screen, colorful shadow puppets come to life accompanied by live music. Anansi the spider plays tricks on everyone in this much-loved tale. Note the later start time.



# Oxbow Adventures

10:30 a.m. to noon  
Tuesdays

The edge of an ancient forest at Oxbow Regional Park is the setting for this series of nature programs for children ages 5-10 led by Metro naturalist Elisabeth Neely. Meet at the Alder Shelter (group picnic area A); arrive at the park entrance at about 10:15 a.m. to get to the area on time. Wheelchair accessible by arrangement, except River Roundup.

 by arrangement

Advance registration is required. There is a program fee of \$2 per participating child, payable at time of program for families (adults and non-participating siblings do not pay). For childcare centers and other organized

groups, a \$20 deposit covering the fees of the first 10 children in your group is required in advance. There is a park entry fee of \$4 per car or \$7 per bus. To register, call (503) 797-1928.

## Osprey adventure

June 28

What does an osprey eat? How big is its nest? Find out all about these big birds of prey, then take a walk to see a real osprey nest – and with luck, the “fish-hawks” themselves. Then try out your “wings” on our osprey obstacle course.

## Barefoot and bear feet

July 5

Summer is barefoot time. How do your feet compare to the feet of a bear, a duck or a deer? What can you tell about an animal from its footprints? Have fun as you try to move like wild animals and take a ticklish barefoot walk.

## Sneaky scavenger hunt

July 12

We'll break into small clans and our naturalist leaders will guide us through the deep shady forest on a scavenger hunt for cool nature stuff and a bag of treasure. But beware – the others might be sneaking up on us!

## Forest fashion

July 19

What are the animals wearing this season? Why is it hard to see wildlife? Can we copy the animals to get closer to them? Find out how to camouflage yourself, and play a wild camo hide-and-seek game.

## River roundup

July 26

Discover firsthand the many creatures that live in and near the Sandy River on this popular trip. We'll have a great time catching and releasing water bugs, crayfish and more. Nets and magnifying glasses are provided for a close-up view.

## Osprey Day on Father's Day

10 a.m. to 1 p.m.  
Sunday, June 19

Bring the family to the second annual Osprey Day, and celebrate Father's Day with the birds. Enjoy nature along the wild and scenic Sandy River at Metro's Oxbow Regional Park.

Join a park naturalist on a guided walk to observe an osprey (“fish-hawk”) nest in the towering old-growth forest; most years we can see mom, dad and young osprey in the nest. Spotting scopes will give you an up-close view. Then head down the trail to explore the river and discover the many wild animals that live there. Guides will be on hand providing nets and magnifying glasses for a look at some amazing water creatures. Gardeners can check out Metro's mobile garden to learn about wildlife-friendly gardening techniques and take home a native plant. Bring a picnic lunch if you like.

Activities begin regularly across from the Alder Shelter and are suitable for adults or families with children. The walks are slow and easy with a distance of 1/2 mile roundtrip; the river trail is short but includes an incline and walking on a rocky sandbar (not stroller or wheelchair accessible). Free with your annual pass or park entry fee of \$4 per car or \$7 per bus. Registration is not required. For more information, call (503) 797-1928.



# Metro's new native plant center takes root

In an inventive response to a persistent problem, Metro's natural resources team is creating a native plant materials center at an open space property along the Tualatin River.

At targeted natural areas around the region, Metro's restoration work is aimed at reestablishing rare but vital habitat types that once thrived throughout the Willamette Valley. Often the native plant materials needed to do the job are hard to come by. Commercial stock can be unavailable, insufficient or too expensive; at times, the genetics and collection practices are in question.

Metro's new native plant materials center, located near Wanker's Corner in Tualatin, will provide a critical supply

of native plant materials for use at Metro's parks and natural areas all over the region. A long-term goal of the project is to be able to share the stock and seeds with other agencies and organizations working on restoration in the region.

Two acres of pasture have been plowed, disked and planted with a native annual cover crop. A water conservation irrigation system is being installed in the plant propagation and holding area. More than 4,500 native trees and shrubs, potted by an EnviroCorps team, are earmarked for volunteer planting projects next fall and winter. Propagation beds for willows and emergent plants are under construction. A shade structure will be built from salvaged building materials.



AmeriCorps volunteer Marsha Holt-Kingsley brings an education in environmental science and a background in the wholesale nursery business to her position as coordinator of the native plant materials center. In addition to getting the plant center off the ground, Marsha is developing a volunteer program to support seed collection and center operations and educational programs to increase public awareness of the importance of native plants.

## HELP WANTED at native plant center

*Do you have skills in native grass, sedge and forb identification and a commitment to restoring threatened, rare and endangered indigenous plant species? Do you have an interest in gardening, horticulture or ethnobotany? Metro is seeking long-term volunteers who are available on weekdays and have a passion for native plants. If you are interested in one of the positions described below, call Marsha Holt-Kingsley at (503) 813-7554.*

### Native seed collectors/ processors

Metro seeks committed volunteers for native seed collection from Metro open space sites throughout the region. These volunteers will also help process collected seed at the native plant center. Training in native plant identification, seed collection protocol, and

processing and site mapping will be provided. People who can volunteer at least twice per month are preferred. Collection and processing are under way now and continue through November. Some native plant identification skills required.

### Native plant center assistants

Adopt a seed bed; plant native seed collected from a variety of Metro sites; weed, monitor and harvest the seed for planting back at Metro restoration sites. If you have the yearning to get dirt under your fingernails and learn to propagate native grasses, sedges, forbs, willows and emergents, this is the opportunity for you. People who can volunteer at least once every other week for six months are preferred. Assistant positions are available year-round.

## Gardening naturally at home



Learn about composting, gardening with native plants and how to use less pesticides and chemicals in your yard on Metro's web site at [www.metro-region.org](http://www.metro-region.org) or by calling (503) 234-3000. Metro offers natural gardening workshops and seminars, a natural techniques demonstration garden and the annual Gardens of Natural Delights tour.

# Summer calendar

ENJOY NATURE IN NEIGHBORHOODS

## Metro councilors hit the trail

This summer, Metro councilors will grab their binoculars, pull on their hiking boots and join you on bird walks, open space tours and nature programs all over the region. Come to the special GreenScene activities below to meet your Metro councilors.

**June 19**  
**Canemah Bluff tour**  
Councilor Brian Newman  
and Council President  
David Bragdon  
pg. 8

**June 22**  
**Orchard Park bird walk**  
Councilor Susan McLain  
pg. 11

**June 26**  
**Bird watching at Noble  
Woods Park**  
Councilor Susan McLain  
pg. 11

**June 28**  
**Twilight Tuesday**  
Councilor Rex Burkholder  
pg. 8

**July 6**  
**Orchard Park bird walk**  
Councilor Susan McLain  
pg. 11

**July 9**  
**Painted turtle walk**  
Councilor Rex Burkholder  
pg. 7

**July 10**  
**Ambleside Amble on the  
Springwater**  
Councilor Robert Liberty  
and Council President  
David Bragdon  
pg. 9

**July 17**  
**Kolk pond tour**  
Council President David  
Bragdon  
pg. 9

**July 22**  
**Campfire program at  
Oxbow**  
Councilor Rod Park  
pg. 4


**Aug. 21**  
**Lower Clackamas River  
trip**  
Council President David  
Bragdon and Councilor  
Brian Newman  
pg. 12


## Nature Discoveries

**Painted turtle walks**  
12:30 to 2 p.m. Saturdays,  
June 4, July 9 and 16  
Smith and Bybee Wetlands  
Natural Area is home to one  
of the largest remaining popu-  
lations of Western painted  
turtles in the Northwest.  
Learn about the natural histo-  
ry of painted turtles and why  
they are so rare with the help  
of Metro naturalist James  
Davis, who will have small  
telescopes for a close look.  
On July 9, Metro Councilor



*Metro Councilor Rex Burkholder and his colleagues on the Metro Council will be joining you at GreenScene programs throughout the summer.*

Rex Burkholder will be our special guest. Suitable for adults and children 6 and older. Meet in the parking area on North Marine Drive. Free. Advance registration required; call (503) 797-1928. Metro 

**Ranger programs at  
Tualatin Hills Nature  
Park**  
2 to 2:30 p.m. Saturdays and  
Sundays  
Learn about the amazing  
plants, animals and history  
of Tualatin Hills Nature Park  
with a park ranger. Topics  
will vary from week to week.  
Free. Groups of six or more  
are asked to call ahead for  
special group programs. For  
more information, call (503)  
629-6350. *Tualatin Hills Park  
and Recreation District*  
 by arrangement

**Tot walk at George  
Rogers Park**  
11 a.m. to noon Monday,  
June 6  
Play on the sandy beach  
and stroll through the shady  
woods at George Rogers Park  
on the Willamette River with  
a naturalist. The program is

for children 6 and younger  
with a parent. \$3 for Lake  
Oswego residents; \$4 for  
others. To register, call (503)  
675-2549. *Lake Oswego  
Parks and Recreation*

**Cycle the wellfield**  
9 a.m. to 1 p.m. Saturday,  
June 11  
Enjoy a bicycle ride through  
the groundwater protection  
area and learn how you can  
help protect our important  
groundwater source. Bring  
a helmet, water and lunch.  
Meet at the Parkrose Transit  
Center parking lot near the  
MAX Red Line stop. Free.  
Advance registration re-  
quired; call (503) 281-1132.  
*Columbia Slough Watershed  
Council and Portland Bureau  
of Water Works*

**Tot walk at Bryant  
Woods**  
11 a.m. to noon Monday,  
June 13  
Join other children and par-  
ents as you explore Bryant  
Woods Nature Park with a  
naturalist. Look for raccoons,  
deer and other critters in a  
rich natural area with forest,

meadow and wetlands. The program is for children 6 and younger with a parent. \$3 for Lake Oswego residents; \$4 for others. To register, call (503) 675-2549. *Lake Oswego Parks and Recreation*

**Twilight Tuesdays at Smith and Bybee Wetlands Natural Area**  
7 to 9:30 p.m. Tuesdays, June 21 and 28, July 12 and 26

*Time change for August walks:*  
6:30 to 9 p.m. Tuesdays, Aug. 9 and 23

This relaxing walk at Smith and Bybee Wetlands Natural Area takes advantage of those long summer days and gives you a chance to unwind after work. Dusk is one of the best times to see wildlife, especially during the summer. It is about the only time you can see most mammals such as beaver, otter, muskrat, raccoon, deer and mink. Birds also are more active. Discuss the basics of wildlife watching and identification with Metro naturalist James Davis. On June 28, Metro Councilor Rex Burkholder will be our special guest. Bring your binoculars or borrow a pair of ours. All ages are welcome, but children must be able to be quiet, sneaky and patient. Payment of \$5 per adult is required in advance; children are free. Call (503) 797-1928. *Metro* ♿

**Canemah Bluff tour**  
1 to 3 p.m. Sunday, June 19  
This natural area perched atop a cliff features a wonderful view of the Willamette River, a great variety of native plants, rich local history and amazing examples of the Pacific yew tree. Join Metro naturalist Deb Scrivens, Metro Councilor Brian Newman and Metro Council President David Bragdon for a leisurely exploration. You will receive directions after you register. Payment of \$5 per

adult is required in advance; children are free. Call (503) 797-1928 to register. *Metro*

**Tot walk at Tryon Creek**  
11 a.m. to noon Monday, June 20

Many forest creatures live at Tryon Creek State Natural Area. Join a naturalist and other families on a search for tracks and other clues they leave behind. The program is for children 6 and younger with a parent. \$3 for Lake Oswego residents; \$4 for others. To register, call (503) 675-2549. *Lake Oswego Parks and Recreation*

**A bug's life in the Columbia Slough**  
5:30 to 7 p.m. Tuesday, June 21

Ever wondered what creatures lurk beneath the surface of Portland's waterways? Join the Xerces Society and the Columbia Slough Watershed Council for an evening of underwater exploration. Experience the world of invertebrates in a hands-on environment, and learn about sampling methods and identification. Free. Advance registration required; call Jeff at (503) 232-6639. *Columbia Slough Watershed Council and Xerces Society* ♿ by arrangement

**Animal tracking workshop and practice**  
7 to 8:30 p.m. Wednesday, June 22, and 9:30 a.m. to 12:30 p.m. Saturday, June 25

Have you ever wondered who or what made those footprints on the sides of trails? With practice, you can learn to read the ground like a book. Join Metro naturalist and animal tracker Deb Scrivens at Tualatin Hills Nature Park for an evening indoor class and slide show. Then practice your skills the following Saturday on a special tour of Cooper Mountain Natural Area. The class includes the basics of animal signs, track identification and interpreting

animal movement. You will learn stealth skills needed to watch wildlife at close range and make plaster casts of tracks to bring home. \$16 in-district; \$28 out-of-district. Advance registration required; call (503) 629-6350. *Metro and Tualatin Hills Park and Recreation District*

**Exploring the great outdoors: for parents and children**

1 to 2 p.m. Thursday, June 23  
Encouraging children's innate sense of wonder is at least as important as teaching them the names of plants and animals. But as a parent, wouldn't it be nice to know the names of the plants and animals as well? Or at least know how to find out? If you have ever felt less-than-adequately prepared to introduce your child to nature, this class is for you. Metro naturalist Deb Scrivens will cover the basics of nature observation and show you how to use field guides. Suggestions for easy outdoor nature study activities and a bibliography of the best field guides will be available. Children are welcome. Meet at the St. Johns Library, 7510 N. Charleston Ave., Portland. Registration is not required. For details, call (503) 797-1928. *Metro and Multnomah County Library* ♿

**Explorando el Columbia Slough**

1 to 5 p.m. Saturday, June 25  
Join the Columbia Slough Watershed Council for a Spanish language environmental education festival. Canoe trips, music, bird watching, environmental games and displays, bilingual storytelling, face painting and refreshments will be provided. Activities are offered in both Spanish and English. Come to Whitaker Ponds Natural Area at 7040 NE 47th Ave., Portland. Free. For details, call (503) 281-1132. *Columbia Slough Watershed Council* ♿

**Fanno Creek Greenway Trail walks**

9 a.m. to noon Saturdays, June 25, July 16 and Aug. 27  
Tour completed sections of the Fanno Creek Greenway Trail, a 15-mile multi-use trail planned from the Willamette River in Portland to the Tualatin River in Tualatin. Begin at the Denney Road trailhead west of Highway 217 and travel approximately 5 miles along Fanno Creek. Free. To register, call Bob Bothman at (503) 244-7206. *Tualatin Hills Park and Recreation District Trails Committee* ♿

**Discover nature in your park**

8 a.m. to noon Tuesday through Thursday, June 28-30  
Hillsboro has some wonderful public parks with amazing opportunities to see wildlife. On this three-day adventure, children ages 7-10 will travel to a different park each day to explore the different habitats, search for pileated woodpeckers, great horned owls and other critters. A snack is provided. \$60 for Hillsboro residents; \$90 for non-residents. To register, call (503) 681-5397. *Hillsboro Parks and Recreation*

**Twilight hike at Jackson Bottom**

7 to 9 p.m. Saturday, July 9  
Take a leisurely evening walk around Jackson Bottom Wetlands Preserve with naturalist Sarah Pinnock to watch for birds, listen for frogs and look for animal tracks and sign. Families are welcome, but strollers do not navigate well on the trails. Bring binoculars if you have them. \$4 per person. Advance registration is required; call (503) 681-6278. *Jackson Bottom Wetlands Preserve*





## **Ambleside amble on the Springwater Corridor**

**11 a.m. to 1 p.m. Sunday, July 10**

The Ambleside property in Gresham is not open to the public, but you can get a sneak peek on a guided tour with Metro naturalist James Davis. Metro Councilor Robert Liberty and Council President David Bragdon also will attend. On this leisurely walk along Johnson Creek, you can see the results of a dam removal project that has made this stretch some of the best fish habitat in the watershed. This also is the only place in the region where the Hogan cedar, a unique variety of Western red cedar, occurs naturally. Suitable for adults and children age 8 and older. You will receive directions and other information after you register. Payment of \$5 per adult is required in advance; children are free. Call (503) 797-1928 to register. *Metro*

## **Scout game at Oxbow**

**11 a.m. to 2 p.m. Sunday, July 10**

Imagine if you could go back in time, join a band of your ancient ancestors and roam the landscape that is now Oxbow Regional Park. Game participants will divide into small bands, trek through the woods and along the river, use tracking and concealment techniques, and locate food caches for their group. The game is designed to fully activate sensory awareness and nature observation abilities. No experience necessary, but participants must be willing to walk 1-2 miles over varied terrain, get a little dirty, and use their sense of adventure and humor. Appropriate for all ages; children must be accompanied by an adult. Dress for the weather and bring a small bottle of water. Meet at the floodplain parking area. Registration and a program fee of \$4 per person are required in advance. There also

is a \$4 per vehicle entry fee to the park, payable at the gate. To register, call (503) 797-1928. *Metro*

## **Wetland Adventures**

**8 a.m. to 4 p.m. Monday through Friday, July 11-15**  
Children ages 7-9 will explore the natural world, learn about everything from insects to plants, build a fort, do lots of hands-on activities and have a great time outside. Each day has a different focus, while children learn about wetlands and all the amazing creatures that live in these muddy, squishy places. \$120 for Hillsboro residents; \$130 for non-residents. To register, call (503) 681-5397. *Hillsboro Parks and Recreation*

## **Bugs and Blooms Mini Camp**

**9 to 11:30 a.m. or 1 to 3:30 p.m. Wednesday through Friday, July 13-15**  
Step into the children's garden at Luscher Farm to explore the world of sun, plants and bugs at this three-day camp for children ages 4-6. Your little "bugs" can crawl in the green bean teepee, make garden crafts and harvest vegetables. \$43 for Lake Oswego residents; \$48 for others. To register, call (503) 675-2549. *Lake Oswego Parks and Recreation*

## **Soup on the Slough**

**11:30 a.m. to 1:30 p.m. Friday, July 15**  
You are invited for lunch, slough stories and a tour of Whitaker Ponds, a thriving natural area and environmental education center that was once a junkyard. This casual event is open to everyone interested in learning more about the Columbia Slough watershed. Free. Advance registration required; call (503) 281-1132. *Columbia Slough Watershed Council*

 by arrangement

## **Kolk pond tour**

**1 to 3 p.m. Sundays, July 17 and Aug. 7**

Do you remember the flood in our region in 1996? Can you imagine a 400-foot-deep flood in the same area? More than 12,000 years ago, repeated floods of this scale came down the Columbia River and scoured out low spots in the Portland-Vancouver basin. Join Metro naturalist Deb Scrivens on an exploration of a pond formed in one of these low spots in Tualatin. On July 17, Metro Council President David Bragdon will be our special guest. Discover what native flora and fauna reside there. Suitable for adults and children age 10 and older. Payment of \$5 per adult is required in advance; children are free. Call (503) 797-1928 to register. *Metro*

## **Little Adventures**

**8:30 to 10 a.m. or 10:30 a.m. to noon Monday through Wednesday, July 18-20**  
Children ages 4-7 will learn about frogs, birds and the amazing world of insects. There will be lots of hands-on activities, art projects and time for exploration and adventures outside. \$25 for Hillsboro residents; \$37 for non-residents. To register, call (503) 681-5397. *Hillsboro Parks and Recreation*

## **Family bat outing**

**7 to 9 p.m. Friday, July 22**  
Learn about owls, the magnificent hunters of the night, in a combination class and walk suitable for older children and adults. Meet at Backyard Bird Shop in Beaverton for a 45-minute class, then carpool to Tualatin Hills Nature Park for

## **Encounter at Nicháqwli at Blue Lake Regional Park**

**1 to 8 p.m. Saturday, Aug. 6**



In 1807, led by a Chinookan-speaking guide from a village known as Nicháqwli, William Clark and a small party of men headed down the Columbia to find a big river they'd missed in November 1805 and again in 1806. On their way to map what we now know as the Willamette River,

Clark wrote about a Native American village near Blue Lake whose people had been decimated by smallpox.

Step into life on the river at a family-friendly cultural event at Blue Lake Regional Park. Explore life in a tribal village as it existed 200 years ago and learn about historical and contemporary Native American culture.

The event will begin with the dedication of a monument honoring the native peoples of the Columbia River region. The monument has a special place in a beautiful natural area at the west end of the park. Visitors also will enjoy music, drumming, dancing, a traditional canoe exhibit, a salmon bake, children's activities and more.

The event is hosted by the Confederated Tribes of Grand Ronde, the Lewis and Clark Trail Heritage Foundation, the West Columbia Gorge Chamber of Commerce and Metro.

the owl prowl. A \$5 registration fee will be refunded with a \$5 gift certificate the night of the class. To register, call (503) 626-0949. *Backyard Bird Shop*

### **Bull Run watershed tours**

**8:30 a.m. to 4:30 p.m. Saturdays, July 23 and Aug. 20**  
Don't miss this rare opportunity to see Portland's tap water at its source. Learn about the protected resources that provide Portland with uniquely high-quality drinking water. \$15. Advance registration required; call (503) 823-7407. *Portland Bureau of Water Works* ♿ by arrangement

### **Graham Oaks Natural Area tours**

**1 to 3 p.m. Sundays, July 24 and Aug. 14**  
Join Metro naturalist Deb Scrivens for a nature walk at Graham Oaks Natural Area in Wilsonville. The walk will focus on native plant communities, signs of wildlife and future plans for the area that include a public nature park. Our route will take us past several huge old growth Douglas fir trees. Suitable for adults and children 8 and older. Wear hiking shoes that can get muddy. Meet at the CREST center, 11265 SW Wilsonville Rd. Payment of \$5 per adult is required in advance; children are free. Call (503) 797-1928 to register. *Metro*

### **Wild berries and food**

**3 to 5 p.m. Sunday, July 24**  
The forest has many tasty berries and wild foods. Join ranger Ben Pettitt on a hike through Tualatin Hills Nature Park to learn which are edible and how Native Americans used many different forest plants to survive. Suitable for adults and children age 12 and older. \$10 in-district; \$17.50 out-of-district. To register, call (503) 629-6350. *Tualatin Hills Park and Recreation District* ♿ by arrangement

### **Wetland Explorers**

**8 a.m. to 4 p.m. Monday through Friday, July 25-29**  
Children ages 10-12 will enjoy a week-long adventure exploring the amazing diversity of life from the very tiny to the incredibly big. Children will study birds, mammals, amphibians, reptiles, insects, spiders and plants, go on field trips to other natural areas, build forts, do art projects and spend lots of time outside. \$120 for Hillsboro residents; \$130 for non-residents. To register, call (503) 681-5397. *Hillsboro Parks and Recreation*

### **Midsummer night at Lone Fir**

**5 to 8 p.m. Saturday, July 30**  
Bring a blanket to sit on as you enjoy live music, eat ice cream and watch Portland history come to life as local performers present tales of the famous and infamous folks whose final resting places are at Lone Fir Pioneer Cemetery. Pack up the whole family and a picnic dinner. Suggested donation is \$5 per person or \$10 per family or group. For more information, call (503) 775-6278. *Friends of Lone Fir Cemetery* ♿

### **Arnold Creek anniversary celebration beginning at 4 p.m. Sunday, July 31**

Celebrate the 10th anniversary of the purchase of the headwaters of Arnold Creek, one of the first natural areas protected by Metro's open spaces, parks and streams bond measure. Enjoy a potluck and meet your neighbors. Meet at Southwest Arnold Street near Pomona Street and 37th Avenue. Free. For more information, call Amanda at (503) 244-9958. *West Portland Park Neighborhood Association* ♿



## Bug Fest

**12:30 to 4 p.m. Saturday, Aug. 27**

Come to the Tualatin Hills Nature Park for the fifth annual Bug Fest. Celebrate the many spineless creatures both big and small that keep the environment healthy and in balance. All those tiny critters, like beetles, butterflies, bees, slugs and spiders, help recycle fallen trees, pollinate flowers, and are food for other animals. Games, displays, crafts, live bugs and guided activities await the whole family. You even can bring a bug to be identified by an expert. Admission to the festival is \$1.50 per person. For more information, call (503) 629-6350. *Tualatin Hills Park and Recreation District and Metro* ♿

### **Enviro Camp**

**9 a.m. to 4 p.m. Monday through Friday, Aug. 8-12**  
Children ages 6-11 enjoy a week of nature discovery at George Rogers Park in Lake Oswego. Learn to identify animals and plants, explore other local parks and creeks and play nature games. \$175 for Lake Oswego residents; \$192 for others. To register, call (503) 675-2549. *Lake Oswego Parks and Recreation*

### **Life at dusk**

**7 to 9 p.m. Friday, Aug. 12**  
Join ranger Elisa Joy Payne for an evening stroll through Tualatin Hills Nature Park to explore plants and animals at dusk. This is when creatures in the forest change shifts. Find out who wakes up and who goes to sleep at dusk. Suitable for adults and

children age 12 and older. \$10 in-district; \$17.50 out-of-district. To register, call (503) 629-6350. *Tualatin Hills Park and Recreation District* ♿ by arrangement

### **Wapato Island wild food expedition**

**9 a.m. to noon Saturday, Aug. 13**  
Join wild food expert John Kallas and explore edible wild plants of Sauvie Island. You will investigate wild foods from marshes, fields and woods, including wapato, wild cherry and more. \$22. Advanced registration required; call (503) 775-3828. *Wild Food Adventures*

## Marshmallow, meringue and s'mores from wild plants

**1 to 5 p.m. Sunday, Aug. 14**  
Join wild food expert John Kallas and learn how to find and gather wild plants from which we'll prepare luxurious meringues, marshmallows and s'mores. Anyone with a sweet tooth will love this wild food adventure. \$25. Advanced registration required; call (503) 775-3828. *Wild Food Adventures* ♿ by arrangement

## Let's have an adventure 8 a.m. to noon Monday through Wednesday, Aug. 22-24

Children ages 7-10 will hike in a forest, walk along a stream, check out pond life and explore many of the natural areas around the Tualatin Basin. Each day is a different adventure as children learn about the cool plants and animals that live in their watershed. A snack is provided. \$60 for Hillsboro residents; \$90 for non-residents. To register, call (503) 681-5397. *Hillsboro Parks and Recreation*

## Bird Watching

### Great blue heron hike

**8 to 11 a.m. Saturday, June 4**  
Join wetlands education specialist Sarah Pinnock for a walk to the east side of Jackson Bottom Wetlands Preserve to see a colony of great blue herons on nests high in the Douglas fir trees. You should be able to observe young and adult herons as they go about feeding and flight instruction. \$4 per person. Advance registration is required; call (503) 681-6278. *Jackson Bottom Wetlands Preserve* ♿

### Spring bird walk

**9 to 11 a.m. Saturday, June 4**  
Spring brings more than 25 different songbirds to join the resident birds nesting at Smith and Bybee Wetlands Natural Area. Lingering winter waterfowl and birds of prey add to hot birding action at the wetlands in early spring. Meet Metro naturalist and expert birder James Davis in the parking lot on North Marine Drive. Learn to identify birds by sight and song. Bring binoculars or borrow a pair of ours. Suitable for adults and children 10 and older. Free. Advance registration is required; call (503) 797-1928. *Metro* ♿

### Fanno Creek bird walk 8 to 10:30 a.m. Sunday, June 5

Learn about bird identification and behavior on a nature walk along Fanno Creek with naturalist Elaine Murphy. Suitable for older children and adults. To carpool, meet at Beaverton Backyard Bird Shop. Free. Advance registration required; call (503) 626-0949. *Backyard Bird Shop*

### Lunch with the birds noon to 1 p.m. Wednesdays through June 29

Meet a Jackson Bottom naturalist and spend your lunch hour learning how to identify migrating waterfowl and other cool birds at Jackson Bottom Wetlands Preserve. Spotting scopes, binoculars and field guides will be provided. Meet at the north viewing shelter next to the Clean Water Services sewage treatment plant on Highway 219 south of Hillsboro. Free. Registration is not required. For more information, call (503) 681-6278. *Jackson Bottom Wetlands Preserve* ♿

### Tualatin River birds

**6:30 to 8:30 p.m. Wednesday, June 8**  
Join instructor Doug Roberson and learn about the birds of the Tualatin River watershed. This indoor evening session will be followed by a Saturday morning guided bird walk at a location to be determined. \$10 for members of Tualatin Riverkeepers; \$20 for non-members. Advance registration required; call (503) 590-5813. *Tualatin Riverkeepers* ♿

### Sandy River delta bird walk

**8 to 10:30 a.m. Saturday, June 11**  
Learn about wild bird identification and bird behavior on a nature walk at the Sandy River delta. Suitable for adults and older children with beginning to intermediate birding skills. To carpool, meet at the Gresham Backyard Bird Shop. Free. Advance registration required; call (503) 661-4944. *Backyard Bird Shop*

### Evening bird walks at Orchard Park

**7 to 8:30 p.m. Wednesdays, June 22 and July 6**  
Join Metro naturalist James Davis and Metro Councilor Susan McLain at Orchard Park in Hillsboro for some summer birding during one of the most pleasant times of the day. This 20-acre site in the Rock Creek greenway was purchased by Metro with funds from the open spaces, parks and streams bond measure. The park features an accessible looped trail system through woodlands and meadows and across floodplain and wetland areas via boardwalks. Bring your binoculars or borrow a pair of ours. Suitable for all levels of bird watchers age 9 and older. Free. Advance registration required; call (503) 797-1928. *Metro and Hillsboro Parks and Recreation* ♿

### Sauvie Island bird walk 8 to 10:30 a.m. Saturday, June 25

Explore the Oak Island Nature Trail with naturalist Elaine Murphy. Sauvie Island is a great place to view raptors, herons and lots of songbirds. Suitable for older children and adults with beginning to intermediate birding skills. To carpool, meet at the Vancouver Backyard Bird Shop. Free. Advance registration required; call (360) 253-5771. *Backyard Bird Shop*

### Bird watching at Noble Woods Park

**10 a.m. to noon Sunday, June 26**  
Noble Woods is a 37-acre wooded park in Hillsboro with a mix of forest habitats and an excellent trails system. Join Metro naturalist and expert birder James Davis for his first birding program at Noble Woods. James suspects that this beautiful spot is a bird magnet. Find out if he's right. Bring your binoculars or borrow a pair of ours. Suitable for all levels of bird watchers, teens and adults. Metro Councilor Susan McLain will be our special guest. Free. Advance registration required; call (503) 797-1928. *Metro and Hillsboro Parks and Recreation*

### Mary S. Young State Park bird walk

**8 to 10:30 a.m. Saturday, July 9**  
Join naturalist Elaine Murphy on a nature walk at Mary S. Young State Park and learn about wild bird identification and bird behavior. To carpool, meet at Backyard Bird Shop in Lake Oswego. Advance registration required; call (503) 635-2044. *Backyard Bird Shop*



### Summer bird watching at Smith and Bybee Wetlands Natural Area

9 to 11 a.m. Saturdays, July 9 and 16

Join Metro naturalist and birding expert James Davis for some great birding as the nesting season winds down at Smith and Bybee Wetlands Natural Area. See young birds that have left the nest and “family activities” such as feeding and flocking. Learn to identify the most common birds by their song as well as their appearance. Suitable for adults and children 12 and older. Bring your binoculars or borrow a pair of ours. Free. Advance registration required; call (503) 797-1928. *Metro* ♿

### Greenway Trail bird walk

8 to 10:30 a.m. Saturday, July 23

Explore the Greenway Trail in Vancouver on a bird-oriented nature walk. Suitable for older children and adults with beginning to intermediate birding skills. To carpool, meet at the Vancouver Backyard Bird Shop. Free. Advance registration required; call (360) 253-5771. *Backyard Bird Shop*

### Cedar Creek Trail bird walk

8 to 10:30 a.m. Saturday, Aug. 6

Enjoy viewing native flora and fauna with naturalist Elaine Murphy on a bird-oriented nature walk on the Cedar Creek Trail. Suitable for adults and older children with beginning to intermediate birding skills. To carpool, meet at the King City Backyard Bird Shop. Free. Advance registration required; call (503) 968-9295. *Backyard Bird Shop*

### Kelley Point Park bird walk

8 to 10:30 a.m. Sunday, Aug. 14

Enjoy the flora and fauna of Kelley Point Park and learn about wild bird identification and bird behavior on a nature walk with Backyard Bird Shop. Suitable for adults and older children. To carpool, meet at the Vancouver Backyard Bird Shop. Advance registration required; call (360) 253-5771. *Backyard Bird Shop*

## Paddle Trips

### Tualatin River paddle tour and nature walk

10 a.m. to 2 p.m. Saturday, June 11

Join Metro naturalist James Davis and members of the Tualatin Riverkeepers for a leisurely paddle upstream and back from one of Metro’s future river access points west of Tigard. Before the paddle trip we’ll take a brief walk to explore the forested part of the property, looking for wildflowers, birds, and animal sign. Then explore the habitats of this area paddling the river for about three hours. Birds will be singing from the banks for the entire trip. Bring drinking water, snacks, insect and sun protection, and waterproof binoculars if you have them. Advance registration and payment are required. The registration fee is \$5 for members of the Tualatin Riverkeepers and includes free canoe use. Non-members pay \$10 to register for the trip with their own boat and can rent a canoe from the riverkeepers for an additional \$20. To register, call Tualatin Riverkeepers at (503) 590-5813. *Metro and Tualatin Riverkeepers*

### Tualatin River accessible canoe trip

9 a.m. to 5 p.m. Saturday, June 18

Paddle the Tualatin River and look for river otter, beaver, mink, nutria, red-legged frogs, herons, ducks and a variety of songbirds. The trip will begin at Cook Park in Tigard and head upriver. Take advantage of the Tualatin’s leisurely pace and quiet twists and turns to strengthen your paddling skills and enjoy the scenery. Adaptive equipment and trained staff are available to support people with special needs. \$45 program fee includes equipment, clothing, instruction and transportation from Forest Grove or designated pickup spots in the Portland area. Advance registration required; call (503) 681-9471. *Adventures Without Limits* ♿

### Smith and Bybee Wetlands paddle trips

Traveling by canoe or kayak is the best way to explore Smith and Bybee Wetlands Natural Area in North Portland. Bring your own kayak or canoe and personal flotation device. The trip leader will contact participants if it is necessary to cancel the trip due to low water levels. Meet at the parking lot on North Marine Drive. Advance registration required. *Friends of Smith and Bybee Lakes*

6:30 to 9:30 p.m. Monday, June 20

To register, call Frank Opila at (503) 283-1145.

8 a.m. to noon Sunday, July 24

To register, call Troy Clark at (503) 249-0482.

noon to 4 p.m. Saturday, Aug. 13

To register, call Dale Svart at (503) 285-3084.

### Columbia Slough Regatta

9 a.m. to 1 p.m. Sunday, July 31

This family-focused event attracts hundreds of canoeists and kayakers each year to the banks of the Columbia Slough, a waterway with unique history, abundant wildlife and many recreational opportunities. Participants receive a free t-shirt, refreshments and maps of the slough. A \$5 donation per boat is requested. Advance registration required; call (503) 281-1132. *Columbia Slough Watershed Council*

### Lower Clackamas River raft trip

10 a.m. to 3 p.m. Sunday, Aug. 21

Paddle a raft down a leisurely stretch of the lower Clackamas River on this all-day adventure. Metro naturalist Deb Scrivens will point out the natural wonders and wildlife along the way, and river guide Ken Barker will teach you how to control your raft through the mild rapids. Metro Councilor Brian Newman and Council President David Bragdon will be our special guests. This is a great trip for beginners and families. Bring your lunch. \$35 fee includes instruction, raft equipment and shuttle. To register and for details, call (503) 797-1928. *Metro and Northwest Discoveries*



## Volunteer Ventures

### KEEP NATURE IN NEIGHBORHOODS

#### Bauman Park work day

9 a.m. to noon Saturday, June 4

Help remove Himalayan blackberry and English ivy from the natural areas of Bauman Park. Bring a shovel, loppers and work gloves, if possible. Refreshments will be provided. The park is southwest of the intersection of Southwest Oleson Road and Ames Way. Meet at the dead end on the north side of the park. To register, call Melissa at (503) 629-6305 ext. 2953. *Tualatin Hills Park and Recreation District*

#### Hideaway Park work day

9 a.m. to noon Saturday, June 4

Help remove Himalayan blackberry and English ivy from the natural areas of Hideaway Park. Bring loppers, a shovel and work gloves, if possible. Refreshments will be provided. Meet at the park entrance on Southwest Oleson Road south of Miles Court. To register, call Melissa at (503) 629-6305 ext. 2953. *Tualatin Hills Park and Recreation District*

#### Dickinson Park ivy removal

9 a.m. to noon Saturdays, June 11, July 9 and Aug. 13

Help remove ivy from this small nature park in Southwest Portland. Meet at the turnout on Southwest 55th Avenue south of Taylors Ferry Road. Bring gloves and water. To register, call (503) 823-6131. *Portland Parks and Recreation*

#### Friends of Trees at the refuge

9 a.m. to noon Saturday, June 11

Help with weeding and mulching at Tualatin River National Wildlife Refuge in Tualatin. Tools and training will be provided. For meeting location and directions, visit [www.friendsoftrees.org](http://www.friendsoftrees.org) and click on “planting schedule” or call (503) 284-8846. There is no need to register unless you are bringing a group of 10 or more. *Friends of Trees*  by arrangement

#### Friends of Trees neighborhood coordinator training

9 a.m. to 1 p.m. Saturday, June 11

Neighborhood residents learn how to organize tree plantings in their neighborhoods during next year’s planting season. Advance registration required; call Rachel at (503) 282-8846 ext. 19. *Friends of Trees*

#### Powell Butte trail maintenance

9 a.m. to noon Saturdays, June 11, July 9 and Aug. 13

Help repair the trails at Powell Butte Nature Park. Bring water and gloves. Meet at the parking lot at the top of the hill on Southeast 162nd Avenue south of Powell Boulevard. To register, call (503) 823-6131. *Portland Parks and Recreation*

#### Stewardship day at Smith and Bybee Wetlands

9 a.m. to noon Sunday, June 12

Help restore native plant communities at a variety of sites around Metro’s 2,000-acre Smith and Bybee Wetlands Natural Area in North Portland. Restoration activities include maintaining native plants and removing invasive species that threaten the habitat. Wear long pants and sleeves and sturdy shoes. Tools, snacks and water

will be provided. Advance registration required; call (503) 797-1928. *Metro*

#### Monumental evenings at Lone Fir

6:30 p.m. to sunset Tuesdays, June 14 and 28, July 12 and 26, and Aug. 9 and 23

Enjoy the beauty and tranquility of Lone Fir Pioneer Cemetery in Southeast Portland. Discover stories of days gone by as you help care for the headstones and landscape of this historic pioneer cemetery. The focus this year is tombstone transcription, site maintenance and beautification. Meet at the entrance at Southeast 21st Avenue and Morrison Street. For more information, call Becky at (503) 775-6278. *Friends of Lone Fir Cemetery*

#### Errol Heights wetlands work days

9 a.m. to noon Saturdays, June 18, July 16 and Aug. 20

Help restore the Errol Heights property in the heart of Southeast Portland. This 12-acre site has three spring-fed ponds and is used by local school children as an outdoor laboratory. Meet at the corner of Southeast 52nd and Tenino. Bring water and gloves. To register, call (503) 823-6131. *Portland Parks and Recreation*

#### Friends of Trees at Bonita Park

9 a.m. to noon Saturday, June 18

Help with weeding and mulching at Bonita Park in Tigard. Tools and training will be provided. For meeting location and directions, visit [www.friendsoftrees.org](http://www.friendsoftrees.org) and click on “planting schedule” or call (503) 284-8846. There is no need to register unless you are bringing a group of 10 or more. *Friends of Trees*  by arrangement

#### Lone Fir work days

10 a.m. to 1 p.m. Saturdays, June 18, July 16 and Aug. 20  
Help restore Metro’s Lone Fir Pioneer Cemetery. Activities include cleaning and leveling headstones, raising sunken stones, gardening, landscaping and recording headstone information for a research project. For more information, call Becky at (503) 775-6278. *Friends of Lone Fir Cemetery*

#### Tualatin Hills Nature Park project days

9 a.m. to 1 p.m. Saturdays and Sundays, June 18 and 19, July 16 and 17, and Aug. 20 and 21

Help a Tualatin Hills Nature Park ranger remove invasive plants and create a desirable habitat for native plants and wildlife. Bring work gloves and drinking water. Volunteers younger than 18 need a parent waiver form, and volunteers younger than 14 must be accompanied by an adult. To register, call (503) 629-6350. *Tualatin Hills Park and Recreation District*


#### Woods Memorial Natural Area restoration

9 a.m. to noon Saturdays, June 18, July 16 and Aug. 20

Help restore this 34-acre wooded park in Southwest Portland by removing non-native plants and building a new trail system. Bring water and gloves. To register, call (503) 823-6131. *Portland Parks and Recreation*

#### Friends of Trees at Gresham Woods

9 a.m. to noon Saturday, June 25

Help with weeding and mulching at this natural area in Gresham. Tools and training will be provided. For meeting location and directions, visit [www.friendsoftrees.org](http://www.friendsoftrees.org) and click on “planting schedule” or call (503) 284-8846. There is no need to register unless you are bringing a group of 10 or more. *Friends of Trees*  by arrangement

## Fourth of July fireworks and music

at Metro's Blue Lake  
Regional Park in  
Fairview

**C**elebrate Independence Day with fireworks, music and fun. Pack a picnic, load up your loved ones and join us at Blue Lake for a good time for the whole family. Activities are located at the west end of the park.

**Family activities**  
1 to 5 p.m.

**International food  
court**  
1 to 10 p.m.

**Music**  
The group Slam will perform classic rock, smooth jazz and rhythm and blues music from the '80s and '90s.  
6 to 10 p.m.

**Fireworks above  
the park**  
10 to 11 p.m.

Admission is \$7 per vehicle. No pets, alcohol or personal fireworks.

**Presented by**  
Yoshida Group

**Sponsored by**  
The Gresham Outlook  
Merchants Bank  
Metro  
Mt. Hood Community  
College  
Murray Chevrolet  
Special thanks  
Fairview Police  
Department  
Multnomah County  
Sheriff's Office  
Gresham Fire Department  
Gresham Chamber of  
Commerce  
West Columbia Gorge  
Chamber of Commerce  
Volunteers in the Gorge  
Gresham Optimists Club

# Calendar at a Glance

## JUNE

- 1 Lunch with the birds at Jackson Bottom, pg. 11
- 4 Painted turtle walk, pg. 7
- 4 Hideaway Park work day, pg. 13
- 4 Bauman Park work day, pg. 13
- 4 Great blue heron hike at Jackson Bottom, pg. 11
- 4 Spring bird walk at Smith and Bybee Wetlands, pg. 11
- 5 Fanno Creek bird walk, pg. 11
- 6 Tot walk at George Rogers Park, pg. 7
- 8 Tualatin River birds, pg. 11
- 8 Lunch with the birds at Jackson Bottom, pg. 11
- 11 Powell Butte trail maintenance, pg. 13
- 11 Tualatin River paddle tour and nature walk, pg. 12
- 11 Friends of Trees at the refuge, pg. 13
- 11 Dickinson Park ivy removal, pg. 13
- 11 Sandy River Delta bird walk, pg. 11
- 11 Cycle the Wellfield, pg. 7
- 11 Friends of Trees neighborhood coordinator training, pg. 13
- 12 Stewardship Day at Smith and Bybee Wetlands, pg. 13
- 12 Tot walk at Bryant Woods Nature Park, pg. 7
- 14 Monumental evenings at Lone Fir Cemetery, pg. 13
- 15 Lunch with the birds at Jackson Bottom, pg. 11
- 18 Tualatin Hills Nature Park project day, pg. 13
- 18 Lone Fir work day, pg. 13
- 18 Errol Heights wetlands work day, pg. 13
- 18 Tualatin River accessible canoe trip, pg. 12
- 18 Woods Memorial Natural Area restoration, pg. 13
- 18 Friends of Trees at Bonita Park, pg. 13
- 19 Tualatin Hills Nature Park project day, pg. 13
- 19 Canemah Bluff tour, pg. 8
- 19 Osprey Day on Father's Day, pg. 5
- 20 Summer solstice paddle at Smith and Bybee Wetlands, pg. 12
- 20 Tot walk at Tryon Creek State Natural Area, pg. 8
- 21 Twilight Tuesday at Smith and Bybee Wetlands, pg. 8
- 21 A bug's life in the Columbia Slough, pg. 8
- 22 Evening bird walk at Orchard Park, pg. 11
- 22 Lunch with the birds at Jackson Bottom, pg. 11
- 22 Animal tracking workshop and practice, pg. 8
- 23 Exploring the great outdoors: for parents and children, pg. 8
- 25 Fanno Creek Greenway Trail walk, pg. 8
- 25 Explorando el Columbia Slough, pg. 8
- 25 Friends of Trees at Gresham Woods, pg. 13
- 25 Sauvie Island bird walk, pg. 11
- 26 Bird watching at Noble Woods Park, pg. 11
- 28 Monumental evenings at Lone Fir Cemetery, pg. 13
- 28 Oxbow adventures: Osprey adventure, pg. 5
- 28 Discover nature in your park, pg. 8
- 28 Twilight Tuesday at Smith and Bybee Wetlands, pg. 8
- 29 Lunch with the birds at Jackson Bottom, pg. 11

## JULY

- 1 Oxbow campfire program: Jen and Wendy's tunes, pg. 4
- 2 Oxbow campfire program: Birds of prey, pg. 4
- 4 Fourth of July fireworks at Blue Lake, pg. 14
- 5 Oxbow adventures: Barefoot and bear feet, pg. 5
- 6 Evening bird walk at Orchard Park, pg. 11
- 8 Oxbow campfire program: The folk music of Juliet Wyers, pg. 4
- 9 Twilight hike at Jackson Bottom, pg. 8
- 9 Dickinson Park ivy removal, pg. 13
- 9 Oxbow campfire program: Storytelling with Will Hornyak, pg. 4
- 9 Summer bird watching at Smith and Bybee Wetlands, pg. 12
- 9 Powell Butte trail maintenance, pg. 13
- 9 Painted turtle walk, pg. 7
- 9 Mary S. Young State Park bird walk, pg. 11
- 10 Ambleside amble on the Springwater Corridor, pg. 9
- 10 Scout game at Oxbow, pg. 9
- 11 Wetland Adventures, pg. 9
- 12 Oxbow adventures: Sneaky scavenger hunt, pg. 5
- 12 Twilight Tuesday at Smith and Bybee Wetlands, pg. 8
- 12 Monumental evenings at Lone Fir Cemetery, pg. 13
- 13 Bugs and Blooms Mini Camp, pg. 9
- 15 Oxbow campfire program: Old-time bluegrass tunes, pg. 4
- 15 Soup on the Slough, pg. 9
- 16 Oxbow campfire program: Bats, pg. 4
- 16 Summer bird watching at Smith and Bybee Wetlands, pg. 12
- 16 Painted turtle walk, pg. 7
- 16 Tualatin Hills Nature Park project day, pg. 13
- 16 Lone Fir work day, pg. 13
- 16 Errol Heights wetlands work day, pg. 13
- 16 Woods Memorial Natural Area restoration, pg. 13
- 16 Fanno Creek Greenway Trail walk, pg. 8
- 17 Tualatin Hills Nature Park project day, pg. 13
- 18 Little Adventures, pg. 9
- 19 Oxbow adventures: Forest fashion, pg. 5
- 22 Oxbow campfire program: Fiddling in the park, pg. 4
- 22 Family bat outing, pg. 9
- 23 Bull Run watershed tour, pg. 10
- 23 Oxbow campfire program: Slithering tales, pg. 4
- 23 Greenway Trail bird walk, pg. 12
- 24 Wild berries and food, pg. 10
- 24 Smith and Bybee Wetlands Natural Area paddle trip, pg. 12
- 24 Graham Oaks Natural Area tour, pg. 10
- 25 Wetland Explorers, pg. 10
- 26 Monumental evenings at Lone Fir Cemetery, pg. 13
- 26 Oxbow adventures: River roundup, pg. 5
- 26 Twilight Tuesday at Smith and Bybee Wetlands, pg. 8
- 29 Oxbow campfire program: Old-time music, pg. 4
- 30 Oxbow campfire program: Discovering ethnobotany, pg. 4
- 30 Midsummer night at Lone Fir, pg. 10
- 31 Columbia Slough Regatta, pg. 12
- 31 Arnold Creek anniversary celebration, pg. 10

## AUGUST

- 5 Oxbow campfire program: Old-time bluegrass tunes, pg. 4
- 6 Oxbow campfire program: Birds of prey, pg. 4
- 6 Encounter at Nicháqwi, pg. 9
- 6 Cedar Creek Trail bird walk, pg. 12
- 7 Kolk pond tour, pg. 9
- 8 Enviro Camp, pg. 10
- 9 Monumental evenings at Lone Fir Cemetery, pg. 13
- 9 Twilight Tuesday at Smith and Bybee Wetlands, pg. 8
- 12 Oxbow campfire program: Fiddling in the park, pg. 4
- 12 Life at dusk, pg. 10
- 13 Oxbow campfire program: The amazing night life of bats, pg. 5
- 13 Wapato Island wild food expedition, pg. 10
- 13 Smith and Bybee Wetlands Natural Area paddle trip, pg. 12
- 13 Powell Butte trail maintenance, pg. 13
- 13 Dickinson Park ivy removal, pg. 13
- 14 Kelley Point Park bird walk, pg. 12
- 14 Marshmallow, meringue and s'mores from wild plants, pg. 11
- 14 Graham Oaks Natural Area tour, pg. 10
- 19 Oxbow campfire program: Old-time music, pg. 5
- 20 Woods Memorial Natural Area restoration, pg. 13
- 20 Tualatin Hills Nature Park project day, pg. 13
- 20 Errol Heights wetlands work day, pg. 13
- 20 Oxbow campfire program: Discovering ethnobotany, pg. 5
- 20 Bull Run watershed tour, pg. 10
- 20 Lone Fir work day, pg. 13
- 21 Tualatin Hills Nature Park project day, pg. 13
- 21 Lower Clackamas River raft trip, pg. 12
- 22 Let's have an adventure, pg. 11
- 23 Twilight Tuesday at Smith and Bybee Wetlands, pg. 8
- 23 Monumental evenings at Lone Fir Cemetery, pg. 13
- 26 Oxbow campfire program: Jen and Wendy's eclectic tunes, pg. 5
- 27 Bug Fest at Tualatin Hills Nature Park, pg. 10
- 27 Oxbow campfire program: Storytelling, pg. 5
- 27 Fanno Creek Greenway Trail walk, pg. 8

## SEPTEMBER

- 2 Oxbow campfire program: The folk music of Juliet Wyers, pg. 5
- 3 Oxbow campfire program: Shadow puppets, pg. 5

# See you there!

## Metro regional parks, greenspaces and facilities

**Blue Lake Regional Park** provides archery, volleyball, softball, horseshoes, playgrounds, food concessions, bike and boat rentals, swimming, fishing and large picnic shelters perfect for family reunions and company picnics. Bikers, runners and walkers enjoy the trails along the lake and throughout the park. The Lake House is an elegant site for weddings and other special events.

**Accessible features:** parking, restrooms, archery, fishing dock, picnic areas, water play area, playgrounds, park paths, office, food concession, wetlands observation deck and trail loop.

**Location:** Between Marine Drive and Sandy Boulevard off Northeast 223rd Avenue. From I-84, take the Fairview exit (14) and go north on 207th Avenue to Sandy Boulevard. Turn right onto Sandy and travel east to 223rd and turn left. Proceed north to Blue Lake Road and the park.

**Entrance fee:** \$4 per car and \$7 per bus.

**Oxbow Regional Park**, a 1,200-acre natural area park located within the wild and scenic Sandy River Gorge, offers the opportunity to walk through an old-growth forest or watch fall chinook salmon swim upstream to spawn. The river draws swimmers, rafters, kayakers and anglers. Hiking trails, wooded campsites, reservable picnic areas, horse trails, playgrounds and play fields are also available.

**Accessible features:** parking, office, restrooms, shower buildings, three campsites, picnic shelters and campground amphitheater.

**Location:** Eight miles east of Gresham. From I-84, take the Troutdale exit (17). Go past the truck stop to the light. Turn right on 257th, go 3 miles to Division Street. Turn left onto Division. Follow the signs 6.5 miles and turn left. Follow the road to the park.

**Entrance fee:** \$4 per car and \$7 per bus.

**Howell Territorial Park** on Sauvie Island is a scenic blend of natural and cultural history. The Oregon Historical Society provides interpretive tours of a pioneer house and agricultural museum on summer weekends. Picnickers and birdwatchers enjoy this idyllic site, which also includes nine acres of wetland and surrounding pastoral land. There are two rustic areas that can be reserved for small picnics or weddings.

**Accessible features:** restrooms, picnic areas and barn museum.

**Location:** Take Highway 30 north past Linnton to the Sauvie Island Bridge. Cross the bridge, proceed north approximately 1 mile and turn right onto Howell Park Road.

**Smith and Bybee Wetlands Natural Area** is the largest protected wetland within an American city. Home to beavers, river otters, black-tailed deer, osprey, bald eagles and Western painted turtles, this 2,000-acre wildlife area offers a paved trail with two wildlife viewing platforms. Non-motorized boats are welcome.

**Accessible features:** parking, Interlakes Trail, wildlife viewing platforms and restrooms.

**Location:** On Marine Drive between the Expo Center and Kelley Point Park. Take I-5 to exit 307. Go west on North Marine Drive for 2.2 miles. Turn left at the large brown and white natural area sign.

**Beggars-tick Wildlife Refuge**, a 20-acre greenspace located along the Springwater Corridor Trail, was named after a species of native sunflower. The refuge is home to a variety of native plant species and wildlife, and provides open water for migratory waterfowl in the winter.

**Accessible features:** parking and paths (compacted gravel).

**Location:** Southeast 111th Avenue, just north of Foster Road. Also accessible from the Springwater Corridor Trail.

**Pioneer cemeteries** in Multnomah County offer a unique look into the history of the region and are managed as operating facilities. Dating back as early as 1851, 14 pioneer cemeteries offer scenic tranquility and a glimpse into the past.

**Chinook Landing Marine Park**, a 67-acre marine park with six launching lanes on the Columbia River, is the largest public boating facility in Oregon. The park offers picnic and viewing areas, wetland and wildlife habitat, disabled-accessible docks, restrooms and a seasonal river patrol station.

**Accessible features:** parking, restrooms, picnic area and observation deck.

**Location:** Adjacent to Blue Lake Regional Park on Marine Drive.

**Entrance fee:** \$5 per vehicle.

**M. James Gleason Memorial Boat Ramp** is a convenient public boat launch on the Columbia River, minutes from downtown Portland. Amenities include launch lanes, boarding docks, restrooms, river maps and a river patrol office.

**Accessible features:** parking and restrooms.

**Location:** Northeast 43rd Avenue and Marine Drive.

**Entrance fee:** \$4 per vehicle.

**Sauvie Island Boat Ramp** enables boaters to enjoy the quiet waters and wildlife of Multnomah Channel. Picnic tables, parking and restrooms are available.

**Accessible features:** parking, restrooms and picnic area.

**Location:** At the junction of Burlington Ferry and Sauvie Island roads.

**Glendoveer Golf Course** provides challenging play for every level with two 18-hole golf courses. A 2-mile fitness trail along the perimeter of the course draws joggers and walkers to the natural setting. There also are tennis and racquetball courts, a driving range and a restaurant.

**Location:** 140th and Northeast Glisan Street.

## Information numbers

**General number**  
(503) 797-1850

**Picnic reservations**  
(503) 797-1928

**Registration for Metro activities**  
(503) 797-1928

**Blue Lake Regional Park**  
(503) 665-4995

**The Lake House**  
(503) 797-1928

**Oxbow Regional Park**  
(503) 663-4708

**Howell Territorial Park**  
(503) 665-6918

**James Bybee House**  
(503) 222-1741


**Smith and Bybee Wetlands Natural Area**  
(503) 797-1844

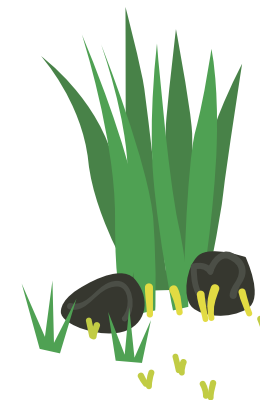
**Marine facilities**  
(503) 665-6918

**Glendoveer Golf Course**  
(503) 253-7507

**Pioneer cemeteries**  
(503) 797-1709

**Note:** In order to protect wildlife habitat, and for their own safety, **pets are not permitted** at any Metro park or greenspace.

 The “accessible features” listed above are facilities and activities that are accessible to wheelchair users. For information about other kinds of access or accommodations, call (503) 797-1728.



# Blue Lake Shuttle

Summer weekend bus service to  
Metro's Blue Lake Regional Park

**Saturdays, Sundays and holidays,  
May 28 through Sept. 5**

**B**oating, fishing, swimming, picnicking and biking abound at Metro's Blue Lake Regional Park in Fairview – a summertime hot spot for all ages. TriMet is launching a pilot service, called the Blue Lake Shuttle, to provide another way for people to get to the park on summer weekends and holidays.

The shuttle runs every 20 minutes from 10 a.m. to 5 p.m. between Gresham Central Transit Center and the park via Northeast 223rd Avenue on Saturdays, Sundays, Memorial Day, Independence Day and Labor Day. Complete schedules and trip planning are available at [trimet.org](http://trimet.org) or by calling (503) 238-RIDE. Regular TriMet fares apply; riders get into the park for free.



METRO

600 NE Grand Ave.  
Portland, OR 97232-2736

ADDRESS SERVICE REQUESTED

Presorted Standard  
U.S. Postage  
PAID  
Portland, OR  
Permit No. 1246



Nature in  
Neighborhoods