

BEFORE THE COUNCIL OF THE  
METROPOLITAN SERVICE DISTRICT

FOR THE PURPOSE OF ESTABLISHING	)	RESOLUTION NO. 90-1261
A POLICY ADVISORY COMMITTEE TO	)	
ASSIST THE METRO COUNCIL IN	)	INTRODUCED BY THE
COORDINATING THE PARKS AND NATURAL	)	EXECUTIVE OFFICER
AREAS PLANNING PROGRAM	)	

WHEREAS, ORS 268.030 (4) allows the Metropolitan Service District to provide for those aspects of land-use planning having metropolitan significance; and

WHEREAS, ORS 268.380 allows the Metropolitan Service District to adopt land-use planning goals and objectives; and

WHEREAS, ORS 268.390 (2) allows the Metropolitan Service District to prepare and adopt functional plans for those aspects of metropolitan development that the Council may identify; and

WHEREAS, on February 9, 1989, by Resolution No. 89-1043, the Council of the Metropolitan Service District expressed its support for a continued parks and natural areas planning and coordination role for the Metropolitan Service District; and

WHEREAS, after more than two years of planning for regional parks and natural areas in cooperation with the local jurisdictions, regional state and federal agencies, and nonprofit park advocate organizations, it is time to commence a formal policy development phase; and

WHEREAS, the existing Parks and Natural Areas Advisory Group consists almost entirely of professional staff and representatives of park advocate organizations, and has operated successfully as an informal group; and

WHEREAS, on August 24, 1989, by Resolution No. 89-1129, the Metropolitan Service District is conducting an inventory and analysis of natural areas within the region; and,

WHEREAS, a formally established policy group consisting of elected officials and citizens is necessary to assist the Metro Council in developing a functional plan to preserve, protect, acquire and manage natural areas; and

WHEREAS, the Plan will be coordinated with the Urban Growth Management Program and be developed in consultation with the local jurisdictions, special districts, regional, state and federal agencies, park advocate organizations, the business and development community, neighborhood associations and citizens; and,

WHEREAS, the Plan will be reviewed by the Intergovernmental Relations Committee prior to review and approval by the Metro Council.


BE IT RESOLVED,

1.) That the Metropolitan Service District hereby establishes a Policy Advisory Committee for its Parks and Natural Areas Planning Program.

2.) The purpose, composition, charge, and appointment procedures for the committee are hereby adopted as shown on Exhibit "A".

3.) That the Metropolitan Service District intends to initiate the development of a Natural Areas and Open Space Functional Plan which will identify and map natural areas, corridors and trails, regional significance, and outline policies and strategies to preserve, protect, acquire and manage natural areas, open space and regional corridors and trails.

ADOPTED: by the Council of the Metropolitan Service District this 28th day of June, 1990.

  
Tanya Collier, Presiding Officer

RESOLUTION.MH  
June 12, 1990

## EXHIBIT A

- 1) The Policy Advisory Committee (hereinafter referred to as "PAC") shall make recommendations to the Metro Council, and may take public testimony on its recommendations prior to forwarding its work products, policy recommendations and the proposed Natural Areas and Open Space Plan to the Metro Council for review and approval.
- 2) The Metro Council, assisted by the PAC, will develop a regional consensus in the development of a Natural Areas and Open Space Plan.
- 3) The Metro Council, assisted by the PAC and the Planning and Development Department, shall serve as the liaison with local jurisdictions, special districts, regional, state and federal agencies, and park advocate organizations on all aspects of the program.
- 4) The Metro Council, assisted by the PAC, shall review the technical reports and studies, maps, policy recommendations and strategies, and draft Natural Areas and Open Space Plan developed by the Parks and Natural Areas Advisory Group and its sub-committees. The Metro Council shall review and approve all program policies and plans.
- 5) The Metro Council, assisted by the PAC, in consultation with local jurisdictions, special districts, regional, state and federal agencies, park advocate organizations, business and development community, and citizens, shall also develop a Regional Corridors and Trails Chapter, Management and Operations Chapter and Acquisition and Finance Plan Chapter; these chapters will be components of the overall Natural Areas and Open Space Plan.
- 6) The PAC shall be composed of the following members:
  - a) One elected official from the Boards of County Commissioners of each of the three metropolitan counties.
  - b) One member of the Portland City Council.
  - c) Three elected city council representatives, one each on behalf of the cities in Washington, Multnomah, and Clackamas counties.
  - d) One representative of the Tualatin Hills Park and Recreation District
  - e) Three Metro Council members appointed by the Presiding Officer in consultation with the Chair of the Intergovernmental Relations Committee of the Council. One of the Metro Council members of the PAC shall be designated Chair of the PAC by the Presiding Officer.

- f) Two representatives from the business and development community.
- g) Two representatives from the environmental community.
- h) Two citizens at-large.

The Policy Advisory Committee will have 17 voting members.

Ex-officio members may include:

Oregon Parks Commission or Department; Oregon Department of Fish & Wildlife; U.S. Fish & Wildlife Service; Clark County and the Intergovernmental Resource Center of Clark County.

- 7) Appointments to the PAC (except for Metro Council member appointments) shall be made by the Executive Officer, in consultation with the Presiding Officer of the Council and the Chair of the Intergovernmental Relations Committee of the Council, and confirmed by the full Metro Council.
- 8) Members of the PAC shall be appointed for two-year terms and will designate alternates consistent with the intent of this exhibit.
- 9) The PAC may adopt rules of procedure for its activities subject to Council approval.

## INTERGOVERNMENTAL RELATIONS COMMITTEE REPORT

### RESOLUTION NO. 90-1261, ESTABLISHING A POLICY ADVISORY COMMITTEE (PAC) FOR THE PARKS & NATURAL AREAS PLANNING PROGRAM

Date: June 15, 1990

Presented by: Councilor Devlin

COMMITTEE RECOMMENDATION: At the June 12, 1990 Intergovernmental Relations Committee meeting, Councilors McFarland, Ragsdale and myself voted unanimously to recommend Council adopt Resolution No. 90-1261 as amended. Councilors Bauer and Gardner were excused.

COMMITTEE DISCUSSION/ISSUES: The Committee reviewed May 24 meeting discussion points and noted staff had been directed to re-write resolution and exhibit language to clarify the Parks PAC is advisory to the Council. Council staff, following up on the May 24 meeting, presented a brief background of Council actions to date on the Parks and Natural Areas program (see Attachment A hereto).

The Committee reviewed the new language developed by staff and made two additional amendments (both supported unanimously):

- 1) In Exhibit A, number 2, add the words "will develop" to the second line so the sentence reads, "The Metro Council, assisted by the PAC, will develop a regional consensus in the development of a Natural Areas and Open Space Plan.
- 2) In Exhibit A, number 9, replace the word "shall" with "may" and add the phrase "subject to Metro Council approval" so the sentence reads, "The PAC [~~shall~~] may adopt rules of procedure for its activities subject to Metro Council approval."

No further changes were requested and the Committee approved all of the rewritten language developed by the Planning & Development department staff.

jpmfive  
a:\901261.cr

STAFF REPORT

CONSIDERATION OF RESOLUTION NO. 90-1261 FOR THE PURPOSE OF  
ESTABLISHING A POLICY ADVISORY COMMITTEE (PAC) FOR THE PARKS  
& NATURAL AREAS PLANNING PROGRAM

---

Date:

June 12, 1990

Presented By:

Richard H. Carson  
Mel Huie

FACTUAL BACKGROUND AND ANALYSIS

Resolution No. 90-1261 establishes a Policy Advisory Committee (PAC) of elected officials and citizens to make recommendations to the Metro Council on the Parks and Natural Areas Planning Program. The PAC will review reports, studies and maps, and make recommendations to the Metro Council in the development of a Natural Areas and Open Space Plan for the region. The plan will include chapters on Regional Corridors and Trails, Management and Operations, and Acquisition and Finance of natural areas. The Metro Council, assisted by the PAC, will serve as the liaison for the program to the local jurisdictions, special districts, regional, state and federal agencies, park advocate organizations, the business and development community, and citizens in the development of the Natural Areas and Open Space Plan. All program policies, plans and maps shall be reviewed and approved by the Metro Council.

By adopting Resolution No. 89-1043 on February 9, 1989, and Resolution No. 89-1129 on August 24, 1989, the Council expressed its support for an on-going parks and natural areas planning and coordination role for Metro. The establishment of a PAC will continue the spirit of cooperation and partnership on the regional planning and coordination efforts to inventory, identify, map, preserve, protect, acquire and manage natural areas.

EXECUTIVE OFFICER'S RECOMMENDATION

The Executive Officer recommends adoption of Resolution No. 90-1261.



**METRO**

2000 S.W. First Avenue  
Portland, OR 97201-5398  
503/221-1646

# Memorandum

May 8, 1990

To: Council Intergovernmental Relations Committee

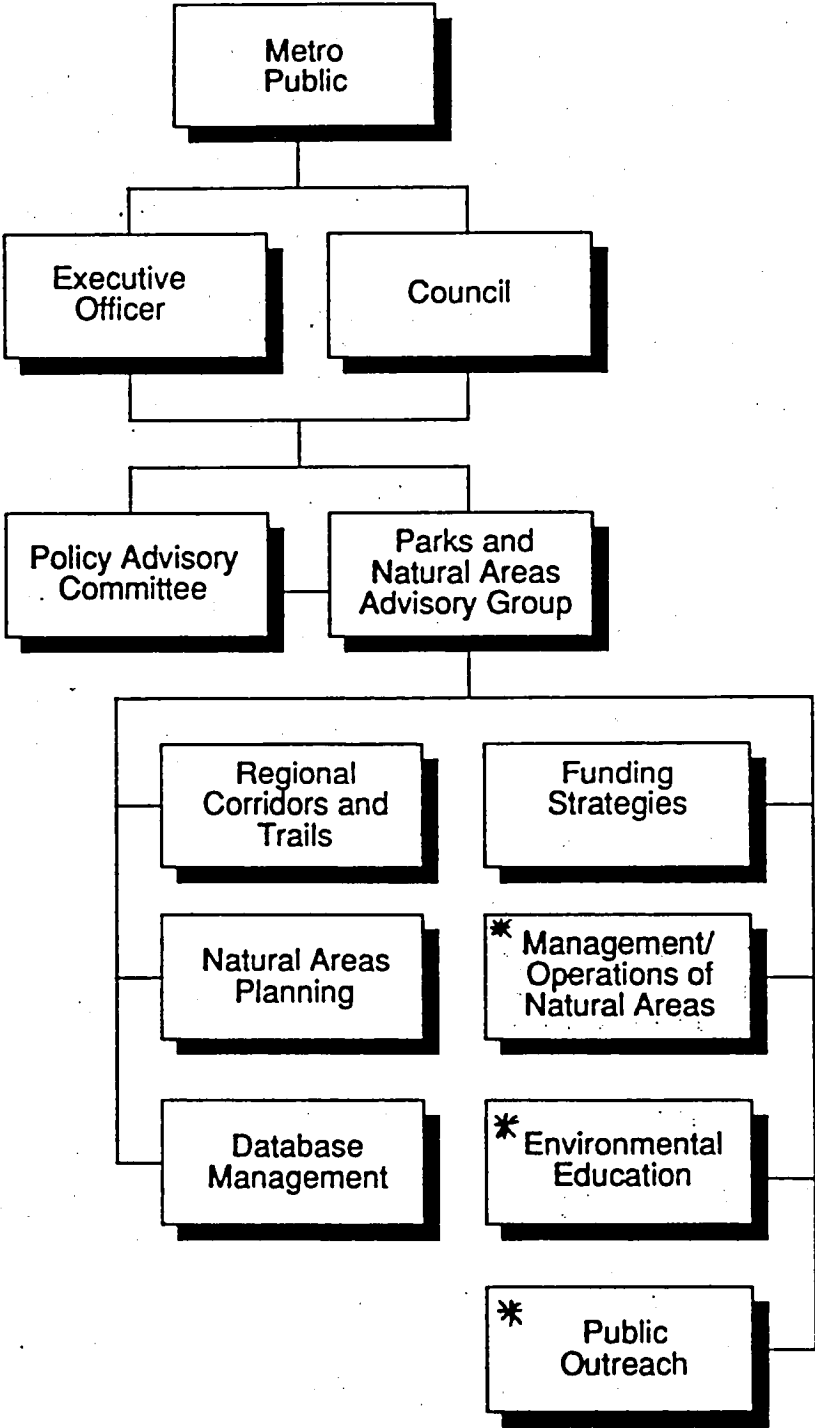
From: <sup>PAC</sup> Richard H. Carson, Director  
Mel Huie, Parks & Natural Areas Planning Coordinator *mt*  
Planning and Development Department

Subject: Parks & Natural Areas Planning Program Update

1. Proposed Six Phases for the Program
2. Planning Process
3. Committee Structure
4. Briefings for City Councils, County Commissions,  
Park Advisory Boards and Planning Commissions
5. Other:



# Metro's Parks and Natural Areas Planning Program



## **METRO**

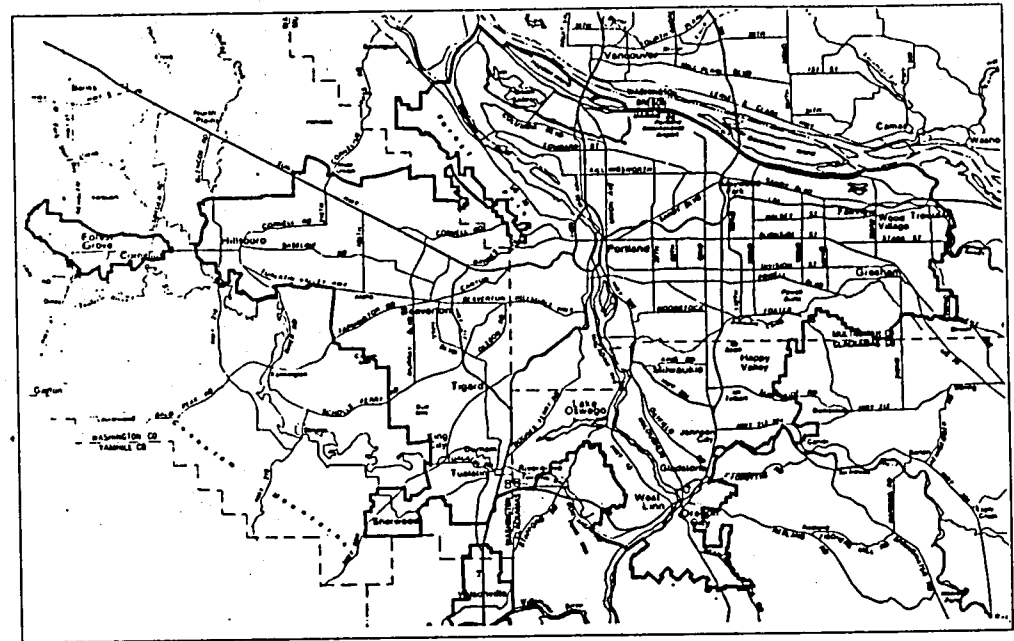
Planning and Development  
Department  
2000 SW First Ave.  
Portland, OR 97201  
(503) 221-1646

Proposed for mid-1990 

# Regional Natural Areas, Open Space and Corridors

Metro, in cooperation with cities, counties, special districts, state and federal agencies, non-profit park advocate organizations and citizens, is taking a leadership role in the development of a regional plan to preserve, protect and potentially acquire natural areas and open space.

As our four-county region continues to grow (+486,000 people during the next 20 years), we need to take a special look at our natural resources. How can we protect our rivers, streams, creeks, wetlands, forests, meadows, parks, greenways and other wildlife habitat which make up a large portion of the quality of life we enjoy? How do we ensure that fish and wildlife will be able to live and thrive in our fast developing urban environment? How can we be stewards of our natural resources for future generations?



## **Phase 1** **June 1989**

Acquisition of color-infrared aerial photographs as a base to identify natural areas and open space.

Coordination with local, state and federal agencies, and non-profit organizations on the project.

Work towards a regional consensus and partnership in developing a program.

Convene the regional Parks and Natural Areas Advisory Group.

## **Phase 2** **September 1989 through July 1990**

Inventory, site visits, developing and incorporating data into Metro's Regional Land Information System (RLIS) and mapping of natural areas within the region.

Establishment of a planning process to include local governments, state and federal agencies, other appropriate organizations and citizens.

Convene a policy advisory committee of elected officials and citizens to guide the planning process.

Identify local, regional, state, federal and private resources.

## **Phase 3** **July 1990 through June 1991**

Development of regional natural areas, open space, policies, strategies, plan and map.

Development of regional corridors and trails plan.

Conduct public outreach and education programs working in cooperation with the Portland Audubon Society's Metropolitan Wildlife Refuge System and other interest groups.

## **Phase 4** **July 1991 through June 1992**

Development of an acquisition and financing plan for natural areas, open space and corridors/trails.

Identify local, regional, state, federal and private resources.

Development of management and operations recommendations for natural areas and regional corridors.

Conduct public outreach and education programs.

Outline political issues through the policy advisory committee.

## **Phase 5** **November 1992 or May 1993**

Coordination of local/regional acquisition and development program(s). Local/regional bond/serial levy(ies) or other funding mechanisms.

Public outreach and education programs.

Election campaign.

## **Phase 6** **1993 and beyond**

Implementation and management of a regional natural areas, green space and corridors system.

**Questions?**  
Contact Mel Huie or Pat Lee at Metro.  
2000 SW First Ave.  
Portland, OR 97201

(503) 221-1646

April 1990

**METRO**



**METRO**

2000 S. W. First Avenue  
Portland, OR 97201-5398  
503/221-1646

# Memorandum

To: Metro's Parks & Natural Areas Advisory Group

From: Mel Huie, Senior Regional Planner *mH*  
Planning and Development Department

Sub: **NATURAL AREAS INVENTORY and COLOR INFRARED AERIAL PHOTOGRAPHY PROJECT:**

**SPONSORS LIST (Agencies and Organizations which have helped pay for the cost of the flight) As of 4/13/90**

1. Metropolitan Service District
2. Audubon Society of Portland
3. Portland State University -- Geography Department
4. Clackamas County
5. Clark County
6. Multnomah County
7. Washington County
8. Unified Sewerage Agency of Washington County
9. Tualatin Hills Park and Recreation District
10. City of Beaverton
11. City of Gresham
12. City of Hillsboro
13. City of Lake Oswego
14. City of Milwaukie
15. City of Oregon City
16. City of Portland
17. City of Tigard
18. City of Troutdale
19. City of Tualatin
20. City of West Linn
21. U.S. Army Corps of Engineers
22. Oregon Department of Fish and Wildlife
23. Oregon Division of State Lands
24. East Multnomah Soil and Water Conservation District
25. Clackamas Water District
26. Oak Lodge Sanitary District
27. Wolf Creek Highway Water District
28. 40-Mile Loop Land Trust
29. The Wetlands Conservancy
30. Interlaken Neighborhood, Inc.
31. Linnton Neighborhood
32. League of Women Voters-West Clackamas County
33. Lynn Sharp, Environmental Consultant
34. Esther Lev, Consultant
35. Scientific Resources, Inc.
36. Paul Fishman, Environmental Consultant
37. Oregon Department of Land Conservation & Development
38. Tri-Met
39. CH2M Hill
40. Oregon Water Resources Department
41. Rittenhouse, Zeman and Associates

*Exhibit A  
attached showing  
amendment  
keep in file*

BEFORE THE COUNCIL OF THE  
METROPOLITAN SERVICE DISTRICT

FOR THE PURPOSE OF ESTABLISHING )  
A POLICY ADVISORY COMMITTEE TO )  
ASSIST THE METRO COUNCIL IN )  
COORDINATING THE PARKS AND NATURAL )  
AREAS PLANNING PROGRAM )

RESOLUTION NO. 90-1261  
INTRODUCED BY THE  
EXECUTIVE OFFICER

WHEREAS, ORS 268.030 (4) allows the Metropolitan Service District to provide for those aspects of land-use planning having metropolitan significance; and

WHEREAS, ORS 268.380 allows the Metropolitan Service District to adopt land-use planning goals and objectives; and

WHEREAS, ORS 268.390 (2) allows the Metropolitan Service District to prepare and adopt functional plans for those aspects of metropolitan development that the Council may identify; and

WHEREAS, on February 9, 1989, by Resolution No. 89-1043, the Council of the Metropolitan Service District expressed its support for a continued parks and natural areas planning and coordination role for the Metropolitan Service District; and

WHEREAS, after more than two years of planning for regional parks and natural areas in cooperation with the local jurisdictions, regional state and federal agencies, and nonprofit park advocate organizations, it is time to commence a formal policy development phase; and

WHEREAS, the existing Parks and Natural Areas Advisory Group consists almost entirely of professional staff and representatives of park advocate organizations, and has operated successfully as an informal group; and

WHEREAS, on August 24, 1989, by Resolution No. 89-1129, the Metropolitan Service District is conducting an inventory and analysis of natural areas within the region; and,

WHEREAS, a formally established policy group consisting of elected officials and citizens is necessary to assist the Metro Council in developing a functional plan to preserve, protect, acquire and manage natural areas; and

WHEREAS, the Plan will be coordinated with the Urban Growth Management Program and be developed in consultation with the local jurisdictions, special districts, regional, state and federal agencies, park advocate organizations, the business and development community, neighborhood associations and citizens; and,

WHEREAS, the Plan will be reviewed by the Intergovernmental Relations Committee prior to review and approval by the Metro Council.


BE IT RESOLVED,

1.) That the Metropolitan Service District hereby establishes a Policy Advisory Committee for its Parks and Natural Areas Planning Program.

2.) The purpose, composition, charge, and appointment procedures for the committee are hereby adopted as shown on Exhibit "A".

3.) That the Metropolitan Service District intends to initiate the development of a Natural Areas and Open Space Functional Plan which will identify and map natural areas, corridors and trails, regional significance, and outline policies and strategies to preserve, protect, acquire and manage natural areas, open space and regional corridors and trails.

ADOPTED: by the Council of the Metropolitan Service District this 28th day of June, 1990.

  
Tanya Collier, Presiding Officer

RESOLUTION.MH  
June 12, 1990

## EXHIBIT A

- 1) The Policy Advisory Committee (hereinafter referred to as "PAC") shall make recommendations to the Metro Council, and may take public testimony on its recommendations prior to forwarding its work products, policy recommendations and the proposed Natural Areas and Open Space Plan to the Metro Council for review and approval.
- 2) The Metro Council, assisted by the PAC, shall have the charge of building a regional consensus ~~will develop a regional consensus~~ in the development of a Natural Areas and Open Space Plan.
- 3) The Metro Council, assisted by the PAC and the Planning and Development Department, shall serve as the liaison with local jurisdictions, special districts, regional, state and federal agencies, and park advocate organizations on all aspects of the program.
- 4) The Metro Council, assisted by the PAC, shall review the technical reports and studies, maps, policy recommendations and strategies, and draft Natural Areas and Open Space Plan developed by the Parks and Natural Areas Advisory Group and its sub-committees. The Metro Council shall review and approve all program policies and plans.
- 5) The Metro Council, assisted by the PAC, in consultation with local jurisdictions, special districts, regional, state and federal agencies, park advocate organizations, business and development community, and citizens, shall also develop a Regional Corridors and Trails Chapter, Management and Operations Chapter and Acquisition and Finance Plan Chapter; these chapters will be components of the overall Natural Areas and Open Space Plan.
- 6) The PAC shall be composed of the following members:
  - a) One elected official from the Boards of County Commissioners of each of the three metropolitan counties.
  - b) One member of the Portland City Council.
  - c) Three elected city council representatives, one each on behalf of the cities in Washington, Multnomah, and Clackamas counties.
  - d) One representative of the Tualatin Hills Park and Recreation District
  - e) Three Metro Council members appointed by the Presiding Officer in consultation with the Chair of the Intergovernmental Relations Committee of the Council. One of the Metro Council members of the PAC shall be

designated Chair of the PAC by the Presiding Officer.

- f) Two representatives from the business and development community.
- g) Two representatives from the environmental community.
- h) Two citizens at-large.

The Policy Advisory Committee will have 17 voting members.

Ex-officio members may include:

Oregon Parks Commission or Department; Oregon Department of Fish & Wildlife; U.S. Fish & Wildlife Service; Clark County and the Intergovernmental Resource Center of Clark County.

- 7) Appointments to the PAC (except for Metro Council member appointments) shall be made by the Executive Officer, in consultation with the Presiding Officer of the Council and the Chair of the Intergovernmental Relations Committee of the Council, and confirmed by the full Metro Council.
- 8) Members of the PAC shall be appointed for two-year terms and will designate alternates consistent with the intent of this exhibit.
- 9) The PAC shall ~~may~~ adopt rules of procedure for its activities ~~subject to Council approval.~~