

Metro | Agenda

Meeting: Smith and Bybee Wetlands Advisory Committee
Date: Tuesday, September 24th, 2013
Time: 5:30 p.m. – 7:30 p.m.
Place: Metro Regional Center - Room 270
600 NE Grand Ave, Portland Oregon 97232

- Welcome and some purple martin photos 5:30 – 5:35 p.m. Troy Clark
- Approve meeting minutes 5:35 – 5:40 p.m. Troy Clark
- Update from Elaine Stewart on work done during the past field season 5:40 – 6:05 p.m. Elaine Stewart
- Discuss the drainage issue for Smith Lake through the channel 6:05 – 6:20 p.m. Elaine Stewart
- Update on recent upgrades to the water control structure (Wildlife Escape Ramps) 6:20 – 6:30 p.m. Dan Moeller
- Update on the Willamette Greenway Trail ODOT grant Jane applied for (if there is one) 6:30 – 6:45 p.m. Janet Bebb
- St. Johns Landfill Remedial Investigation 6:45 – 7:00 p.m. Paul Vandenberg
- Review projects specified by the CNRP and think about Committee next steps 7:00 – 7:30 p.m. Troy Clark
- Adjourn 7:30 p.m.



Smith and Bybee Wetlands Advisory Committee

September 24, 2013

Committee members in attendance

Patt Opdyke *North Portland Neighbors
Troy Clark*Audubon Society of Portland (Chair)
Carrie Butler*Port of Portland (Vice Chair)
Dan Moeller*Metro, Sustainability Center
Eric Tonsager *Oregon Bass and Panfish Club
Dale Svart*Friends of Smith & Bybee Lakes
Lynn Barlow*City of Portland, Parks and Recreation

Others in attendance

Susan BarthelCity of Portland, Bureau of Environmental Services
Janet BebbMetro, Sustainability Center
Elaine StewartMetro, Sustainability Center
Carrie BeldingMetro, Sustainability Center
Paul VandenbergMetro, Parks and Environmental Services
Paul BurnetCH2MHill

Committee members not in attendance

Pam Arden*40 Mile Loop Trust
Sara Henderson*St. Johns Neighborhood Association
Dave Helzer*City of Portland, Bureau of Environmental Services
Bill Briggs*ORRCO
Susan Barnes*Oregon Department of Fish and Wildlife

*Denotes voting Smith and Bybee Wetlands Advisory Committee member.

Welcome

Minutes from the April meeting were approved.

Elaine gave an update on the FY 12-13 work done out at Smith and Bybee over the last year, and what her plans are for FY 13-14. **See attachment 1.**

Elaine said that she is bringing in a consultant to figure out how to get the channel between Smith and Bybee cleared again, while coexisting with beavers. We have to find ways for beaver to be able to build dams, but not right in that channel. The consultant will need to check in with stakeholders, if not the entire committee, then some representatives of the committee. This would likely happen after the first of the year.

Janet Bebb gave an update on the grant that Jane Hart and Mary Anne Cassin applied for. She said that after some discussions with ODOT, we reduced the scope of the project from \$5.6 million down to \$2.6 million. ODOT suggested some different materials to reduce costs on building a bridge using steel trusses only over Columbia Blvd., and a different material, pultruded fiberglass infused resin, over the ground. This allowed our application to be more competitive in the group of 150 applicants. It has now been referred to the Oregon Transportation Commission for final confirmation, and the money would be available to us in two years. Pultruded fiberglass infused resin is the same material used in the renovation of the Bluff Trail at Oaks Bottom.

Janet said this is good news and we're now going into this enthusiastically but with some unanswered questions.

Janet also mentioned that we weren't awarded the TIGER grant.

Elaine gave an update on the waterfowl at Smith and Bybee. **See attachment 2.**

Paul Vandenberg brought Paul Burnet of CH2M HILL to the meeting to present an update on the St. Johns Landfill Remedial Investigation / Feasibility Study. Paul V. summarized by saying that so far the studies that they've completed are generally good news; with regard to both the potential risks and the options for reducing risks. Risks are low and are limited to localized areas near the landfill site. A conclusion is that the landfill was not a significant source of the contaminants. DEQ is currently writing its Staff Report for the project, which will serve as the basis for a DEQ Record of Decision. Paul V. hopes that recommended actions can be implemented about a year from now, in late summer, 2014.

Paul B. reported that after seven years of study and analysis out at the landfill, a lot of data was collected. Most of the focus was on groundwater and sediment. There is contamination of shallow groundwater directly below the landfill, however it is localized, has not extended beyond the perimeter of the landfill, and has not seeped any deeper. Concentrations are stable or reducing. Contamination that is there is not moving very fast. No hot spots were found. There are no patterns of contamination that would indicate that the landfill was a significant source of contamination in the past. There is no current unacceptable level of risk to humans or to birds, fish or mammals. There is risk to humans from fish consumption, due to PCB concentrations in fish tissues, although the PCB levels in sediments around the landfill are not elevated when compared to the rest of the slough. The other significant finding is potential risk to benthic organisms in the sediment. There are four areas with risk above regulatory thresholds. One of the areas was near a stormwater outfall, which was a former combined sewer outfall. The other three are in the large mud flat along the west side of the landfill. It is important to know that the contaminant concentrations/risks in these three areas are low. A wide range of options for addressing risk were evaluated in the Feasibility Study – no action, monitoring, capping, soil amendments, dredging, etc. Treatment of sediments with activated carbon - to bind contaminants and reduce their bioavailability - was considered the option least disruptive to habitat (vs. capping or dredging), and proposed as the preferred option. The carbon would be in a pelletized composite product, and would be applied during a low water period.

In response to a question about potential recontamination of the treated areas, Paul B. said that in general, the levels of contaminants coming from stormwater are decreasing due to a number of improvements in the City's stormwater system, the green streets program, etc.

Paul V. will notify the committee when DEQ publishes its Staff Report.

Susan Barthel gave an update to the group: BNSF Railway came to the City about their expansion plans: nine acres of pervious paving. The nine acres is adjacent to the North Shoreline of Bybee wetland. This would be a development permit not an environmental review or land use review, so there are no comments that can be made. BES provided recommendation to the applicant regarding vegetated buffers for the wetland, preserving turtle nesting habitat, and shielding lighting in the new parking lot.

Dan Moeller gave an update on the wildlife escape ramps that are going to be installed on the water control structure. Dan contracted with Steve Liske at Ducks Unlimited to design escape ramps in the water control structure. **See attachment 3.**

Dan wondered if vector control has come in and presented to the committee. Celeste Mozacatto is planning to put a form together of land managers locally to discuss the issue locally about vector control. Here is a link to the Xerces Society report Patt Opdyke sent around in April of this year:

<http://www.xerces.org/mosquito-management-wetlands/>

Troy wanted to talk about the list of access improvements and begin prioritizing them. He said that policy five in the CNRP is that the Smith and Bybee Wetlands Advisory Committee shall consider to oversee the implementation of this plan. This includes talking about the seven access improvements to be made.

Troy suggested we send out the vision document and the actual CNRP that was submitted.

Vision document can be found here: <http://library.oregonmetro.gov/files/smithbybeecnrp032012.pdf>

Submitted CNRP and decision can be found here: <ftp://ftp.oregonmetro.gov/pub/parks/SmithBybee>

Also, see **attachment 4** for the Smith and Bybee Planning Summary that Janet asked to be distributed.

The meeting adjourned at 7:30 p.m.

Minutes recorded by Carrie Belding.

2012-13 General Work Plan
Smith and Bybee Wetlands Natural Area

Month	Task	Budget	Staff days	Acres	Staff lead	Complete
Habitat restoration						
Nov-Dec	Cage ash trees	\$ 10,000	0.5	10.0	Rick	
April	Leadbetter sedge meadow	\$ 4,000	1.0	6.5	Rick	Y
May-Jun	Knapweed control	\$ 1,500	0.5	3.0	Rick	Y
May-Jun	Yellow flag iris control	\$ 2,000	1.0	TBD	Rick	
Mar-Apr	Ash contract, pending OWEB funds	\$ 7,500	2.0		Elaine	n/a
Monitoring						
Ongoing	Horned lark predator surveys		8.0		Elaine	Y
Aug-Nov	Complete ash forest survey		2.0	27.5	Elaine	N
Aug	Shrub wetland informal monitoring		2.0		Elaine	N
Oct	Ludwigia peploides treatments	\$ 5,000	2.0		Elaine	Y
May-Jun	Bird surveys in upland prairie		2.0		Katy	Y
Water control structure						
Jul-Sep	Wildlife ramps/retro-fits	\$ 15,000			Dan	in process
July-Sep	Data analysis & writing		6.0		Elaine	in process
Sep-Dec	Plan for next round of monitoring		4.0		Elaine	in process
Nov-May	Weekly check of fishway & gage		3.0		Rick	Y
May-July	Drawdown (weekly board removal)		2.0		Rick	Y
Volunteer projects						
Sept.	Pull non-native orchids in forest		0.5		Bonnie	Y
Nov	Planting project		1.0		Bonnie	Y
Feb	Planting project		1.0		Bonnie	Y
March	Invasive removal and planting		3.0		Bonnie	Y
July	Pull non-native orchids in forest		1.0		Bonnie	Y
Other						
Sep-Dec	Plan prairie work, identify grant		3.0		Elaine	Y
Nov-Dec	Write up and submit Ludwigia data		1.0		Elaine	N
Jan	Herbarium contribution?				Elaine	n/a
Nov, Mar	Present water level mgt papers		4.0		Elaine	Y
		<u>\$ 30,000</u>	<u>50.5</u>			

Smith and Bybee Wetlands Work Plan
 FY 2013-2014: July 1, 2013 - June 30, 2014

Month	Task	Budget	Staff days	Acres	Staff lead
Habitat restoration					
Oct	St Johns Prairie site prep	\$ 2,500	0.5	17	Elaine
Nov-Mar	Cage ash trees	\$ 10,000	0.5	10.0	Rick
March	Leadbetter meadow hand cut	\$ 4,000	1.0	6.5	Rick
April	Leadbetter meadow hand spray	\$ 5,000	1.0	6.5	Rick
May-Jun	Knapweed control		0.5	0.3	Rick
May-Jun	Yellow flag iris control	\$ 2,000	1.0	TBD	Rick
May	St Johns Prairie site prep	\$ 2,000	0.5	17	Elaine
Monitoring					
Aug	Shrub wetland informal monitoring		2.0		Elaine
Oct	Ludwigia peploides treatments	\$ 5,000	2.0		Elaine
May-Jun	Bird surveys in upland prairie		1.0		Katy
Water control structure					
Sep-Oct	Wildlife ramps/retro-fits	\$ 15,000			Jeff
Sep-Dec	Plan for next round of monitoring	\$ 10,000	4.0		Elaine
Nov-May	Weekly check of fishway & gage		3.0		Rick
May-July	Drawdown (weekly board removal)		2.0		Rick
Volunteer projects					
Sept.	Pull non-native orchids in forest		0.5		Bonnie
Nov	Planting project		1.0		Bonnie
Feb	Planting project		1.0		Bonnie
March	Invasive removal and planting		3.0		Bonnie
July	Pull non-native orchids in forest		1.0		Bonnie
Other					
Oct-May	Water management plan update	\$ 30,000	10.0		Katy
		<u>\$ 85,500</u>	<u>35.5</u>		



Metro | *People places. Open spaces.*

Smith and Bybee Avian Botulism 2013 Metro Update

Summary

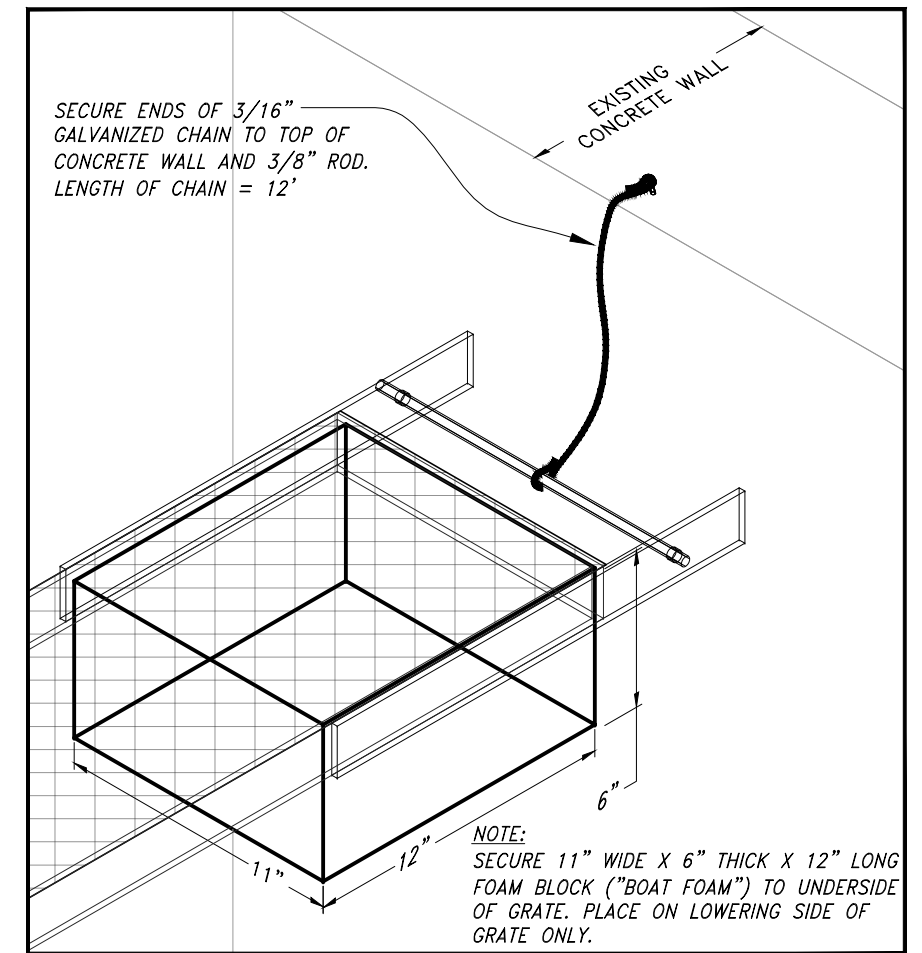
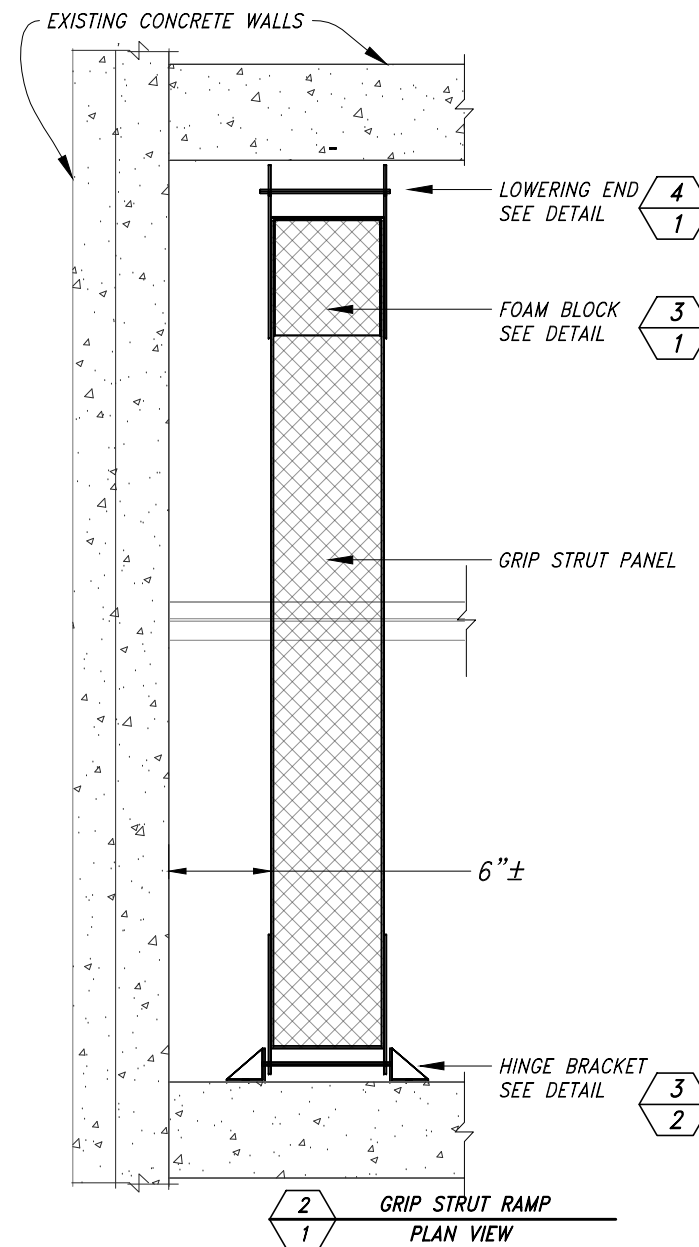
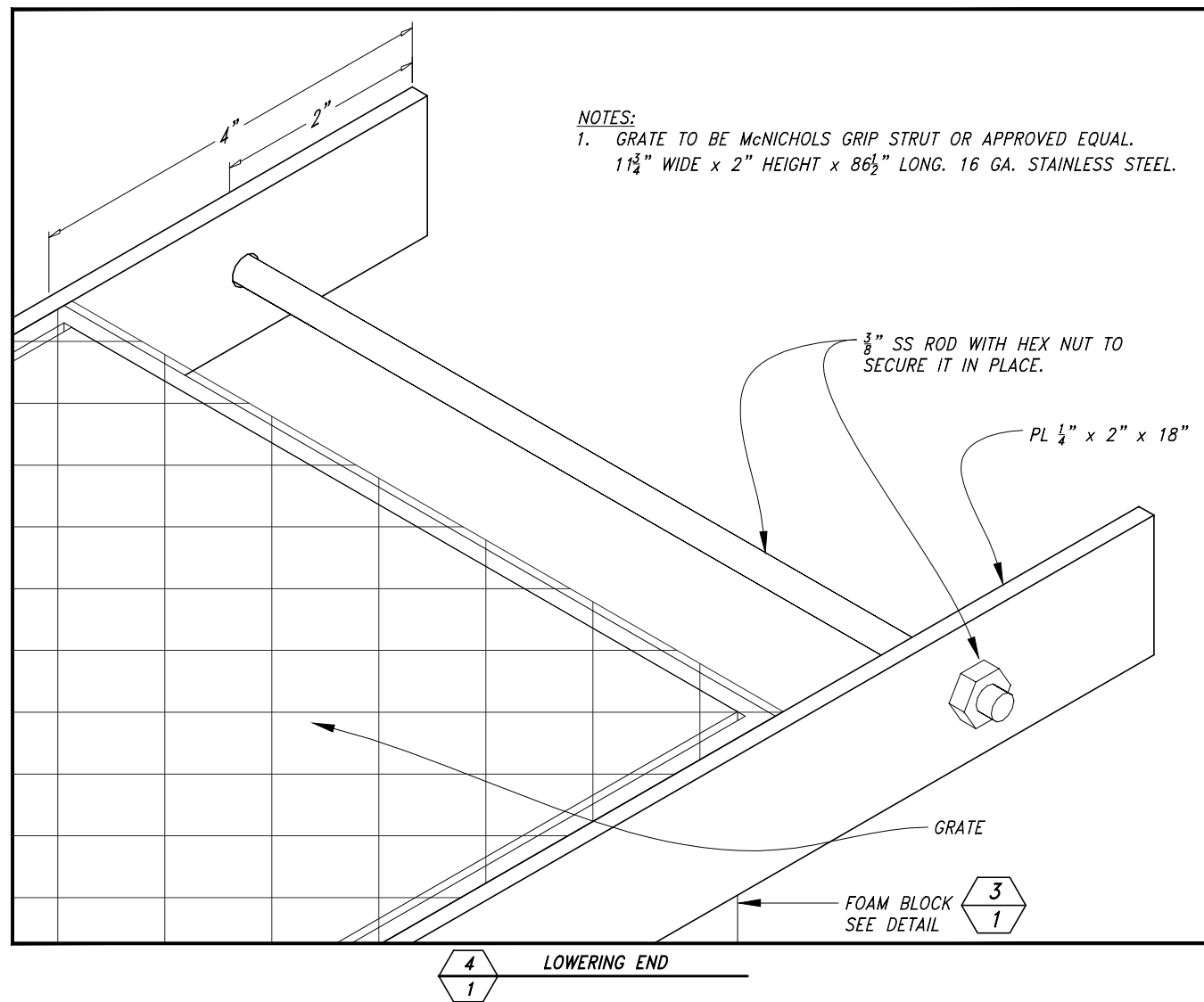
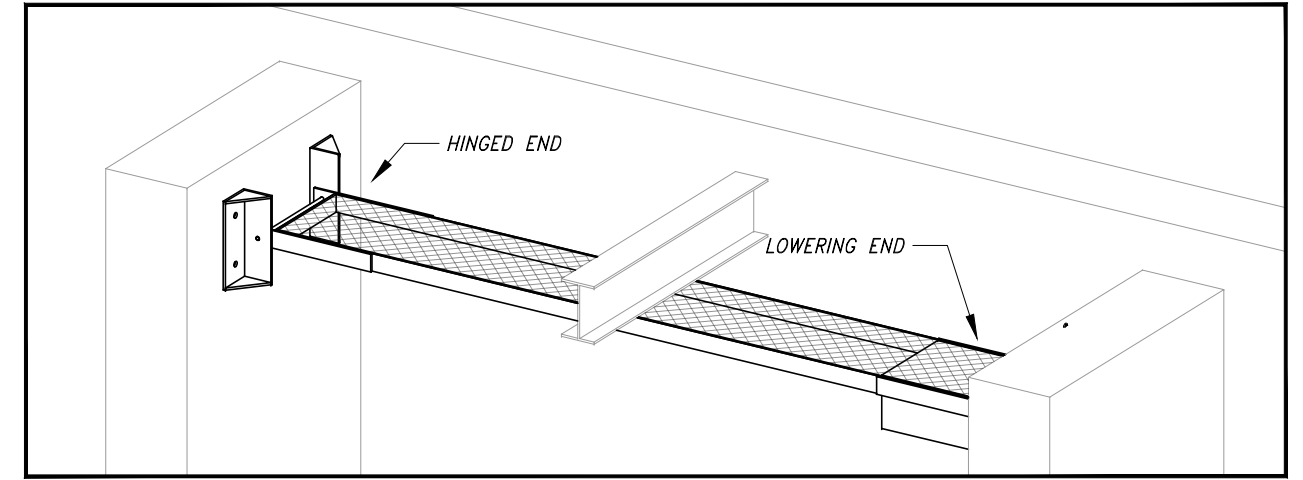
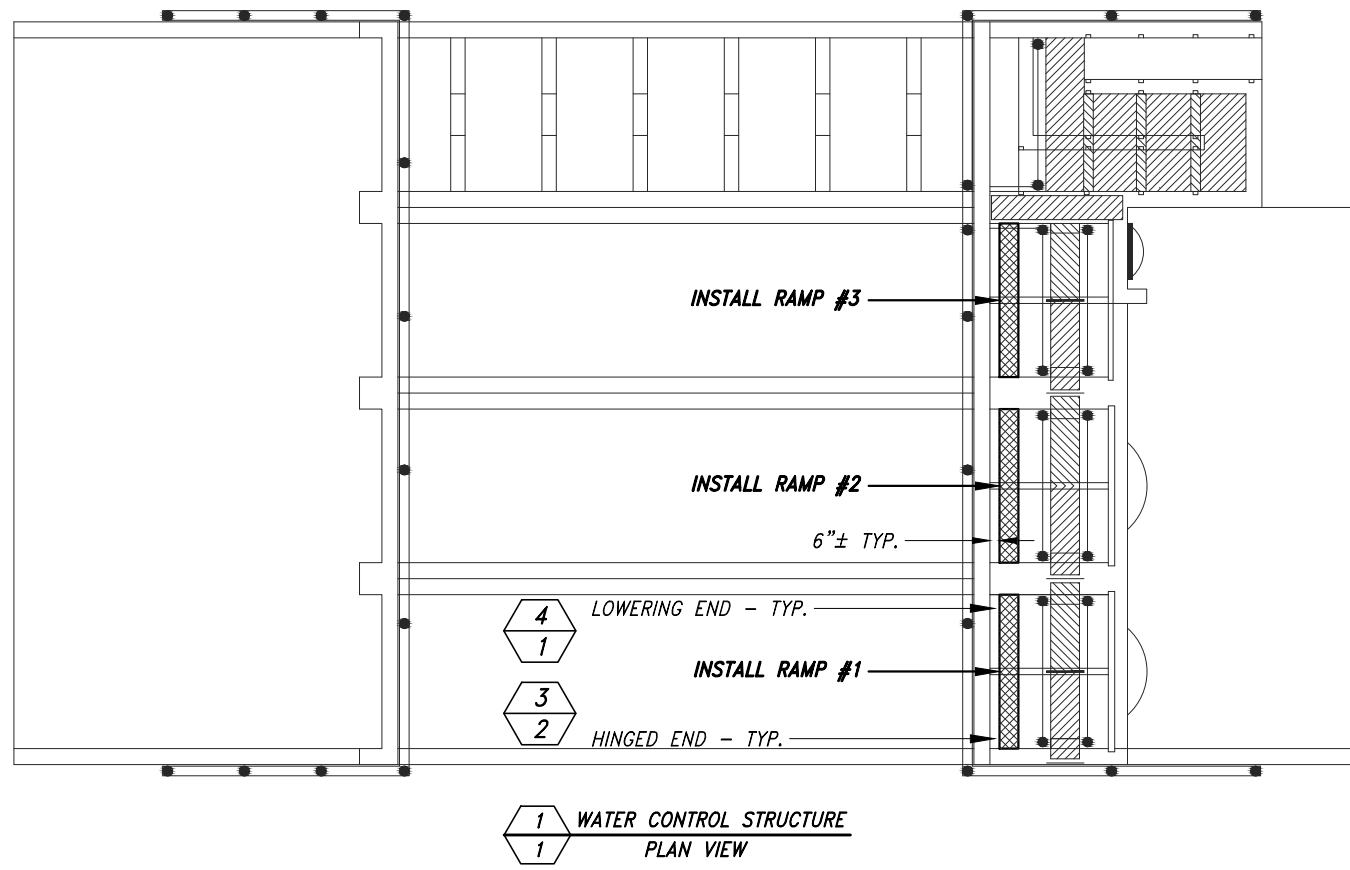
September 10th, 2013 Metro staff met with Oregon Department of Fish and Wildlife veterinarian Julia Burco at Smith and Bybee. We observed a few dead and dying birds at Bybee, and specimens were collected for wildlife health testing. No affected birds were observed at Smith. Also, the water levels at Smith were much lower than last year, which has deterred the same level of use by water birds as last year at this time.

Based upon our observations, Oregon Department of Fish and Wildlife suggested that Metro make efforts to remove sick and dying birds from the wetland to reduce the amount of potential botulism toxin in the system. Metro engaged US Department of Agriculture—Wildlife Services to assist in this response.

ODFW commented that the efforts made to control channel flow last year contributed to the lower levels in Smith Lake this year. Although only modestly successful, these efforts highlighted the importance of maintaining flow control for the future and the important interaction between beavers, nutria, invasive species, and water quality (Until the mid-2000s, Metro had been able to draw down Smith Lake in summer, avoiding the conditions that foster botulism outbreaks in late summer and fall).

Actions Taken in September:

- Bird Removal and Transport by Wildlife Services
 - Bird totals 9/10—9/24/13: approximately 450
 - 60% of all waterfowl were Mallards, 30% Northern shoveler, and the rest Gadwall, Ring-necked duck (only one), Coot (two), and Western sandpiper.
- The Port of Portland reported approximately 25 affected birds. They were able to draw down their larger wetlands substantially early on this season, which greatly reduced the numbers of birds using those sites.

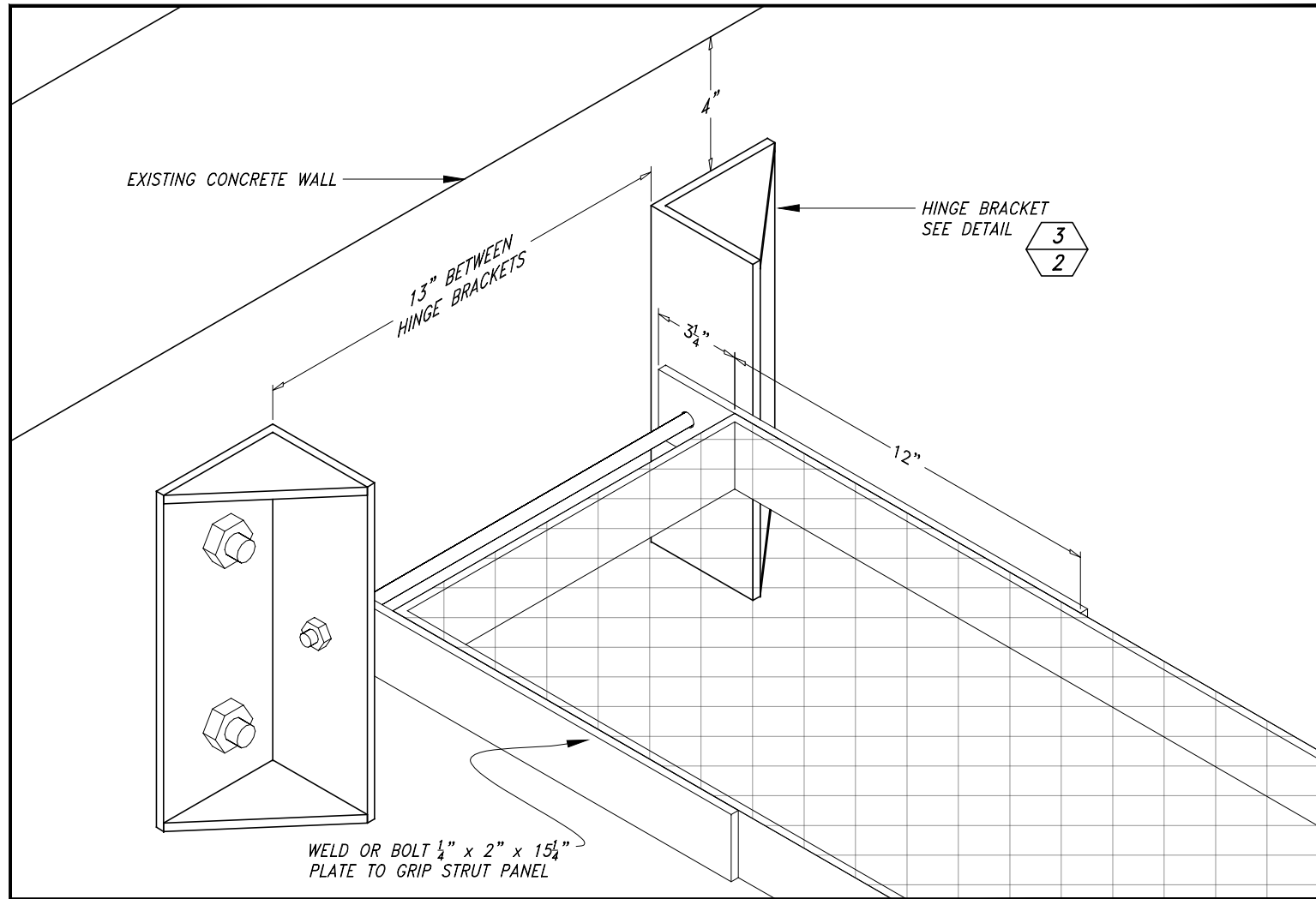


REVISIONS			
REV. NO.	DESCRIPTION	DATE	APPROVED
1			
2			
3			
4			

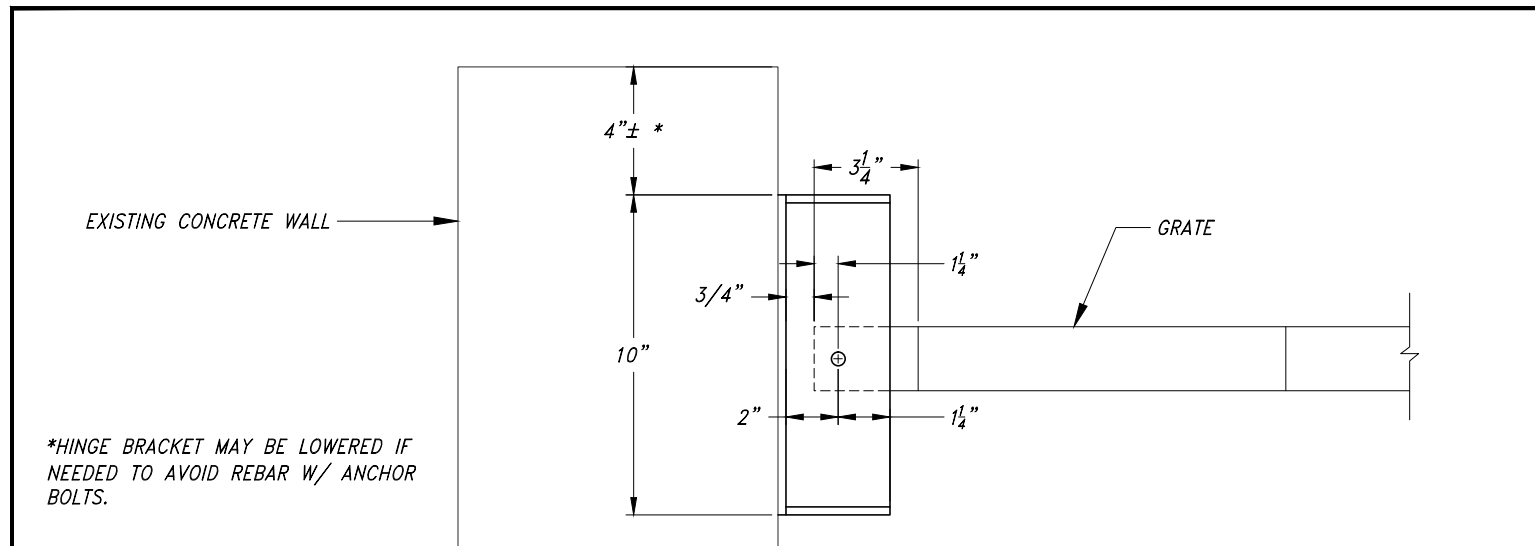
DUCKS UNLIMITED INC.
 PacNW Field Office
 (360) 885-2011
 DATE: 7-1-2013

PROJECT NO. OR-32-7	GENERAL INFORMATION
SMITH & BYBEE LAKES WATER CONTROL STRUCTURE DETAILS GRIP STRUT PANEL INSTALLATION LOWERING END & FOAM BLOCK	DESIGNED BY: SWL DRAWN BY: DMC SURVEYED BY: CHECKED BY:
APPROVED BY:	

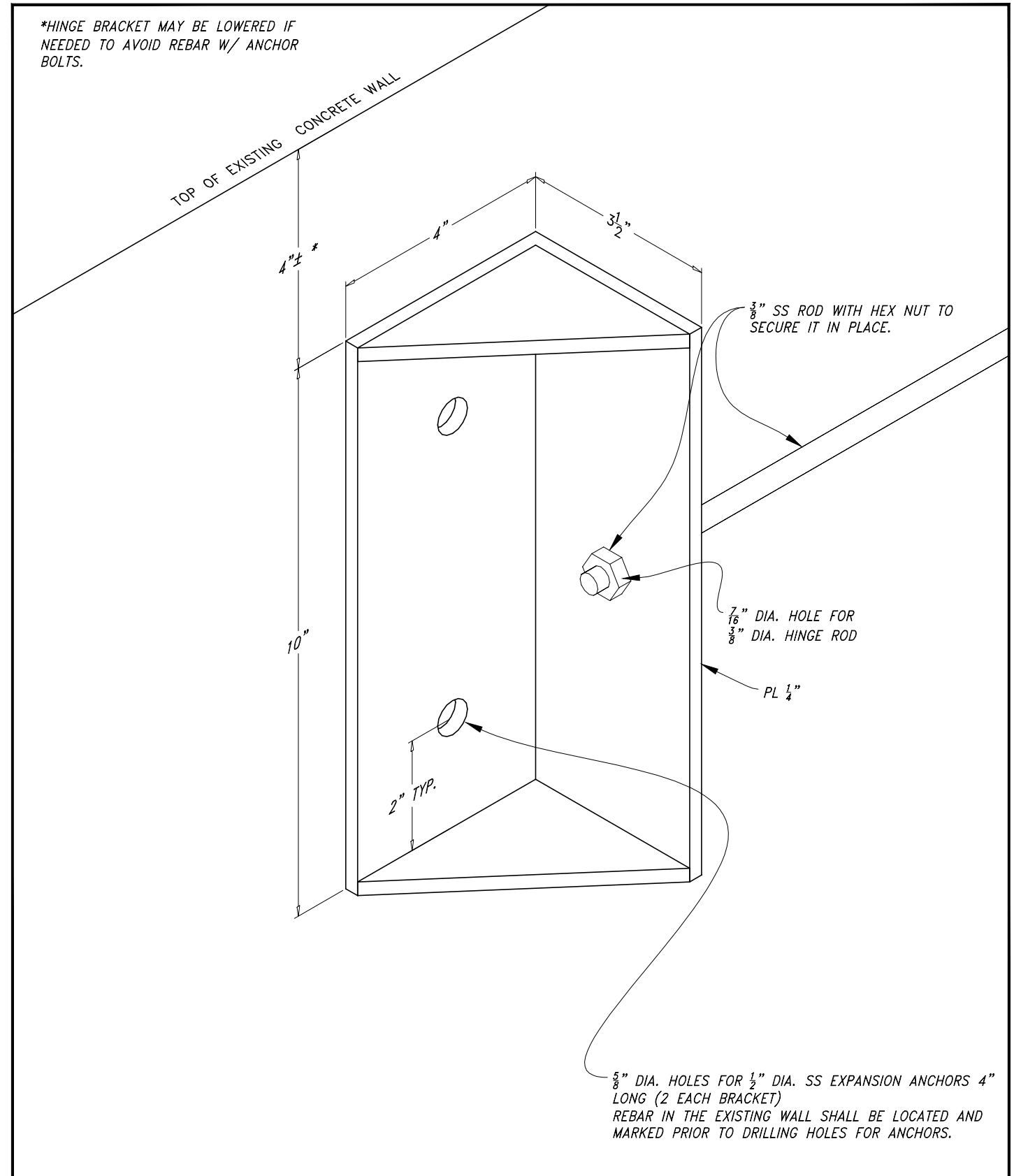
N:\OR Projects\OR-32-7 Metro Smith Bybee WCS Modification\ACAD\OR-32-7 SMITH & BYBEE WCS MODIFICATION.dwg OR-32-7_001_002.dwg 7/1/2013 9:42:23 AM, DMC



1
2 HINGE BRACKET



2
2 HINGE BRACKET



3
2 HINGE BRACKET

N:\OR Projects\OR-32-7 Metro Smith Bybee WCS Modification\CAD\OR-32-7 SMITH & BYBEE WCS MODIFICATION.dwg OR-32-7_001_002.dwg 7/17/2013 9:42:42 AM, DMC



REVISIONS			
REV. NO.	DESCRIPTION	DATE	APPROVED
1			
2			
3			
4			
5			

DUCKS UNLIMITED INC.
 PacNW Field Office
 (360) 885-2011
 DATE: 7-1-2013

PROJECT NO. OR-32-7	GENERAL INFORMATION
SMITH & BYBEE LAKES WATER CONTROL STRUCTURE DETAILS GRIP STRUT PANEL INSTALLATION HINGE BRACKET	DESIGNED BY: SWL DRAWN BY: DMC SURVEYED BY: CHECKED BY:
SHEET NO. 2	APPROVED BY:

Smith and Bybee Planning Summary

October 2013

There are two key documents that finish the Smith and Bybee Wetlands planning work – setting the framework for the next 10 years. The first is the vision document that established the context and work for the upcoming years. During the development of this document, the City of Portland added a Zoning Code provision for a 10-year land use master plan focused on natural resources. This document is referred to as the Comprehensive Natural Resources Plan and replaces the NRMP from 1990.

Vision document

- Completed March 2011
- Based on work with the Smith and Bybee Wetlands Advisory Committee
- Captured the history of the place
- Set conservation targets for 10 years
- Set trail/recreation projects for 10 years

<http://library.oregonmetro.gov/files/smithbybeecnpr032012.pdf>

Comprehensive Natural Resources Plan

- Land use master plan
- Completed June 2013, in force until June 2023
- Final approval of 9 projects
 - Metro recreation
 - Landfill trail and bridge, Interlakes Trail extension and seating, North Slough portage,
 - St. Johns Landfill
 - in-field gas management
 - Levee repair template
 - Landscape restoration

Tentative approval – needs type I review

- St. Johns Landfill
 - Monitoring wells
 - DEQ remediation

- BES
 - Lower slough refugia restoration
 - Lombard Pump Station Improvements

- Port of Portland
 - Rail pedestrian bridge
 - Rivergate Boulevard overcrossing
 - Powerline corridor rail tracks
 - Marine Drive overcrossing

- Metro
 - Solution for beaver dams/avian botulism

M:\suscntr\Natural Areas and Parks\Regional Properties\Smith and Bybee Wetlands Natural Area\Planning\2013 CNRP\June 2013 one-page Planning Summary.docx

COMPREHENSIVE NATURAL RESOURCE PLAN

Smith and Bybee Wetlands Natural Area

Portland, Oregon



www.oregonmetro.gov



EXECUTIVE SUMMARY

Smith and Bybee Wetlands Natural Area
Comprehensive
Natural Resource
Management Plan

Metro | Making a great place



CITY OF PORTLAND
Office of City Auditor LaVonne Griffin-Valade
Hearings Office
1900 SW 4th Avenue, Room 3100
Portland, OR 97201
phone: (503) 823-7307 • fax: (503) 823-4347
web: www.portlandoregon.gov/auditor/hearings



DECISION OF THE HEARINGS OFFICER IN UNCONTESTED CASE

File No.: LU 12-167334 CN (HO 4130004)

Applicant: METRO
Attention: Janet Bobb / Attention: Tim Richard
600 NE Grand Avenue
Portland, OR 97232

Applicant's Representative: Winterbrook Planning
Attention: Tim Brooks
310 SW 4th Avenue, Suite 1100
Portland, OR 97204

Owners: METRO
Attention: Jim Desmond
600 NE Grand Avenue
Portland, OR 97232

City of Portland, BES
Attention: David Helzer
1120 SW 5th Avenue, Room 1000
Portland, OR 97204

Port of Portland
Attention: Tom Beullion
PO Box 3520
Portland, OR 97208

Union Pacific Railroad