



**METRO**

2000 S.W. First Avenue  
Portland, OR 97201-5398  
503 221-1646

# Agenda

Meeting: **Solid Waste Policy Advisory Committee (SWPAC)**  
Date: **May 18, 1987**  
Day: **Monday**  
Time: **12:00 o'clock noon**  
Place: **Conference Room 330**

- 12:00 p.m. - Meeting called to Order  
Approval of April 20, 1987 minutes  
Council members introduction
- 12:15 p.m. - Elections briefing - Wayne Rifer
- 12:30 p.m. - Functional Planning briefing - Becky Crockett
- 1:00 p.m. - Budget briefing - Rich McConaghy
- 1:15 p.m. - Resource Recovery - Debbie Allmeyer
- 1:30 p.m. - Adjourn

SOLID WASTE POLICY ADVISORY COMMITTEE

SWPAC

April 20, 1987

Committee Members Present: Kathy Cancilla, Mike Sandberg, Tom Miller, Michael Pronold, Jeanne Roy, Dee Lockwood (for Gary Newbore), Dave Phillips, Dick Howard, Ruth Selid (for Delyn Kies)

Staff Present: Dennis Mulvihill, Rich McConaghy, Dave Luneke, Tor Lyshaug

Guests: Metro Councilors Sharron Kelley and David Knowles, Estle Harlan, OSSI, Bob Brown, DEQ

Others Present: Bill Webber, Valley Landfills, Inc., Ralph Gilbert, OPRC

The meeting was called to order by Kathy Cancilla at 12:15 p.m.

AGENDA ITEM

APPROVAL OF MINUTES

One item in the minutes of the February 23, 1987 meeting was questioned by Kathy Cancilla: page 5, second paragraph, was it Bruce Rawls or Gary Newbore who had the conflict of interest? It was confirmed that Bruce Rawls was correct. Approval of minutes followed.

The two new SWPAC members, Jeanne Roy and Tom Miller, were introduced.

AGENDA ITEM

RESOURCE RECOVERY REVIEW COMMITTEE

Dave Phillips, a member of the review committee, gave a brief review of the committee's progress. Schedule is sliding somewhat. Public hearings have been scheduled for April 29 and May 4.

Councilor Sharron Kelley, representing District 7, and Councilor David Knowles, representing District 11, were introduced. Ms. Kelley expressed her appreciation of SWPAC and indicated a desire for more intense communication.

AGENDA ITEM

SYSTEM MEASUREMENT STUDY

Dave Luneke, Metro Solid Waste Department, gave a briefing on the System Measurement Study. The second sort has just been

completed. One sort is yet to be completed this spring. A high grade analysis, quantifying waste from specific generator types, has just been completed. This will be used to assess their potential for recycling. The final document is scheduled to be complete around the first of August. Jeanne Roy asked if the system measurement study would regard household hazardous waste. Dave replied that the waste is catalogued into 27 different categories and source coded. Hazardous waste is one of the categories.

#### AGENDA ITEM

#### BUDGET PROCESS

Rich McConaghy was introduced to give a briefing on the budget process. He explained that last November a budget review committee was formed of six citizens and six councilors. Last Tuesday, a presentation of the proposed budget was given to the council. The review committee then has hearings on the proposed budget and makes recommendations after review of the proposed budget. The committee makes recommendations to the Council. The Council will then take the recommendation, hold a public hearing, and then the Council will make a recommendation to TSCC. TSCC then has the budget for a month and a half and comes back in late June and the Council adopts the budget. Rich went on to give a brief explanation of the different programs in the budget. The separate funds in the budget were described. There are four funds: St. Johns Reserve Fund, a sinking fund based on the funds coming in, put aside to take care of the landfill after it closes; Debt Fund, which is used to pay off the current principal interest payments on DEQ loans; Capital Fund, major projects under this fund are WTRC construction, St. Johns Final Improvements, Facilities Development for the new landfill; and the Operating Fund which includes seven programs.

Rich then pointed the key changes in this year's budget from last year's: The budget shows greatly increased direct expenditures for waste diversion, \$2,800,000 to transfer waste other than to St. Johns. The draft financial policies are put into place. The basic idea is to set up a sound basis for purchasing loans and making rates stable. Initially, in the proposed budget, money was included to pay Oregon City .25 per ton royalty. The committee recommended that this be placed in contingency. And the budget has 7.5 new positions. The review committee has approved 3.5 of the new positions, a new engineer for landfill siting, an analyst 3 for functional planning, an office assistant in the Recycling Information Center, and .5 FTE secretary. The committee also recommended three out of five reclasses proposed. Questions followed. Kathy Cancilla requested more information on the justification for the collection study listed in the budget. Kathy Cancilla encouraged anyone who was concerned with the proposed budget to get a copy of the document and go over it and present their concerns at the next meeting.

AGENDA ITEMLEGISLATIVE ISSUES

Kim Duncan was not available for briefing on the legislative issues, however, Dennis Mulvihill provided a short status report and requested questions. Discussion followed. Jeanne Roy questioned HB2929 concerning functional planning and how it relates to solid waste. Solid Waste has authority in ORS.268 that anything that Metro Council designates as having a significant impact on the regional planning. Metro Council has designated solid waste as being a significant area. We are developing a functional plan/systems plan/solid waste management plan for the whole region that would assist us in planning for the siting for facilities or the general operational content of the solid waste system in this region.

AGENDA ITEMWASTE DIVERSION

Tor Lyshaug was introduced to give a briefing on waste diversion. Diversion is not yet anywhere near what is needed to extend the life of St. Johns Landfill. A compaction program is being considered for this spring to see what results will become of increased compaction. Restrictions on drop boxes at St. Johns. Spotters to inspect the garbage and divert as much of the recyclables as possible are planned. Metro is working with the City and DEQ to get approval on using the Waybo Pit. Yard debris is being diverted to Grimm's and East County Recycling. Also under consideration is sending waste to landfills out of the Metro area. Discussion followed.

Kathy Cancilla requested a copy of the entire proposed budget, including the notebook.

The meeting was adjourned at 1:55 p.m.



**METRO**

2000 S.W. First Avenue  
Portland, OR 97201-5398  
503/221-1646

# Memorandum

Date: April 27, 1987

To: Metro Staff, Councilors & Interested Persons

From: Becky Crockett *Becky Crockett*  
Solid Waste Planning Project Manager

Regarding: Summary of Solid Waste Planning Project, FYI

Metro is currently initiating a major planning effort to update the regional Solid Waste Management Plan. The emphasis of this project is to gain consensus to both the planning and siting of solid waste facilities through a regional partnership comprised of Metro, cities, counties, refuse haulers, citizens and other affected parties.

It is intended that the updated Solid Waste Plan identify a comprehensive solid waste management system which incorporates the following key elements.

- \* Provisions for reduce, reuse, recycle, recover, diversion and landfill.
- \* Locations and types of necessary facilities.
- \* Consistency between the Solid Waste Management Plan, local land use plans and state programs.
- \* Defined roles and responsibilities for the ongoing cooperative regional partnership to implement and update the plan.
- \* Continued citizen participation in plan development and implementation.
- \* Recognition of a system that is regionally balanced, cost effective, technically feasible and environmentally and publicly acceptable.

The plan will include, and use as a basis, the recently adopted Waste Reduction Program (May, 1986). Further, it will be developed as a functional plan in accordance with ORS 268.390, Metro Ordinance No.86-207 and Resolution No. 87-740. These documents designate solid waste as appropriate for development of a functional plan.

### DRAFT PROJECT GOAL

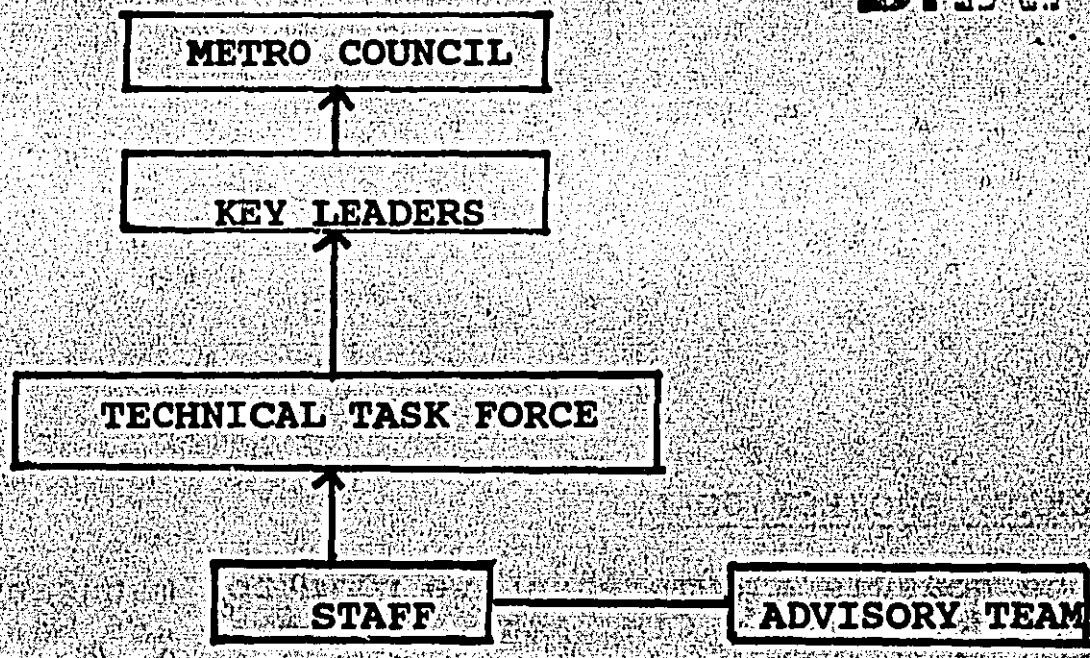
The goal is a comprehensive plan for managing solid waste produced within Clackamas, Multnomah and Washington Counties. The plan will be developed and implemented by a regional partnership of Metro, cities, counties and other affected parties. The plan will be regionally balanced, cost effective, technologically feasible, and environmentally and publicly acceptable.

### DRAFT PROJECT CONCEPTUAL OBJECTIVES

- 1) Include provisions for reduce, reuse, recycle, recover, diversion and landfill.
- 2) Identify locations for necessary facilities.
- 3) Achieve consistency between the Solid Waste Management Plan, local comprehensive plans and state programs.
- 4) Define ongoing roles and responsibilities for regional partnership to implement and update the plan.
- 5) Promote participation by members of the regional partnership.

**ORGANIZATION:**

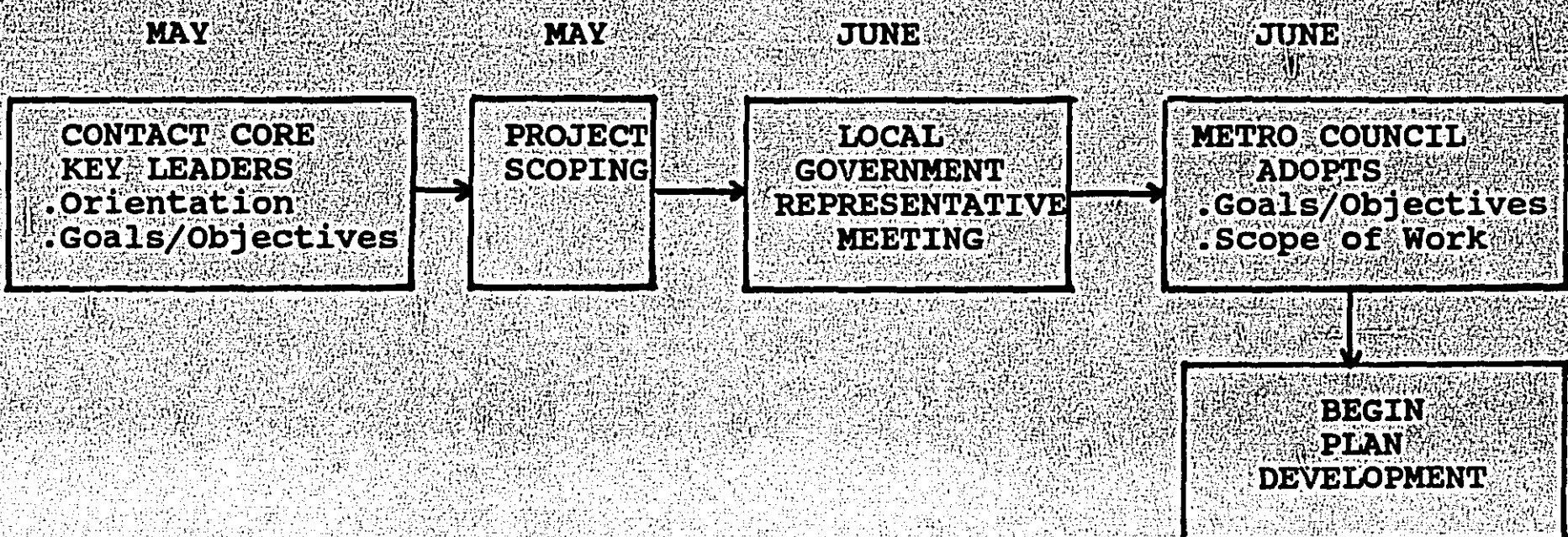
**DRAFT**



**Roles & Responsibilities**

- METRO COUNCIL** - Adoption and implmentation of Plan.
- KEY LEADERS** - Consensus building. Policy recommendations to Council.
- TECHNICAL TASK FORCE** - Technical group. Broad membership of engineers, public works representatives, land use planners, haulers, and citizens.
- ADVISORY TEAM** - Provides periodic advice to staff regarding process and plan content. Current membership is Jim Sitzman, Dave Fredrickson and Ardis Stevenson.

**SCHEDULE:**



# 1987-88 Solid Waste Budget Overview

Excludes intra-departmental fund transfers

## F U N D S

### RESOURCES

	Operating	Capital	Debt	St. Johns Reserve
Rates \$17,821,350	Rates & charges \$15,708,347	\$968,749	\$916,261	\$227,993
Fund balance \$5,215,827	Fund Balance \$1,351,000	Fund balance (transfer) \$2,300,000		Fund Balance \$1,564,827
Interest & miscellaneous \$392,941	Interest & miscellaneous \$189,000	Interest \$120,000		Interest \$83,941
Transfer from CTS fund \$560,000	CTS Fund transfer \$560,000			
Revenue bonds \$8,900,000		Bond proceeds \$7,675,000	\$1,225,000	
<b>Total \$32,890,118</b>	<b>\$17,808,347</b>	<b>\$11,063,749</b>	<b>\$2,141,261</b>	<b>\$1,876,761</b>

### PROGRAM EXPENDITURES

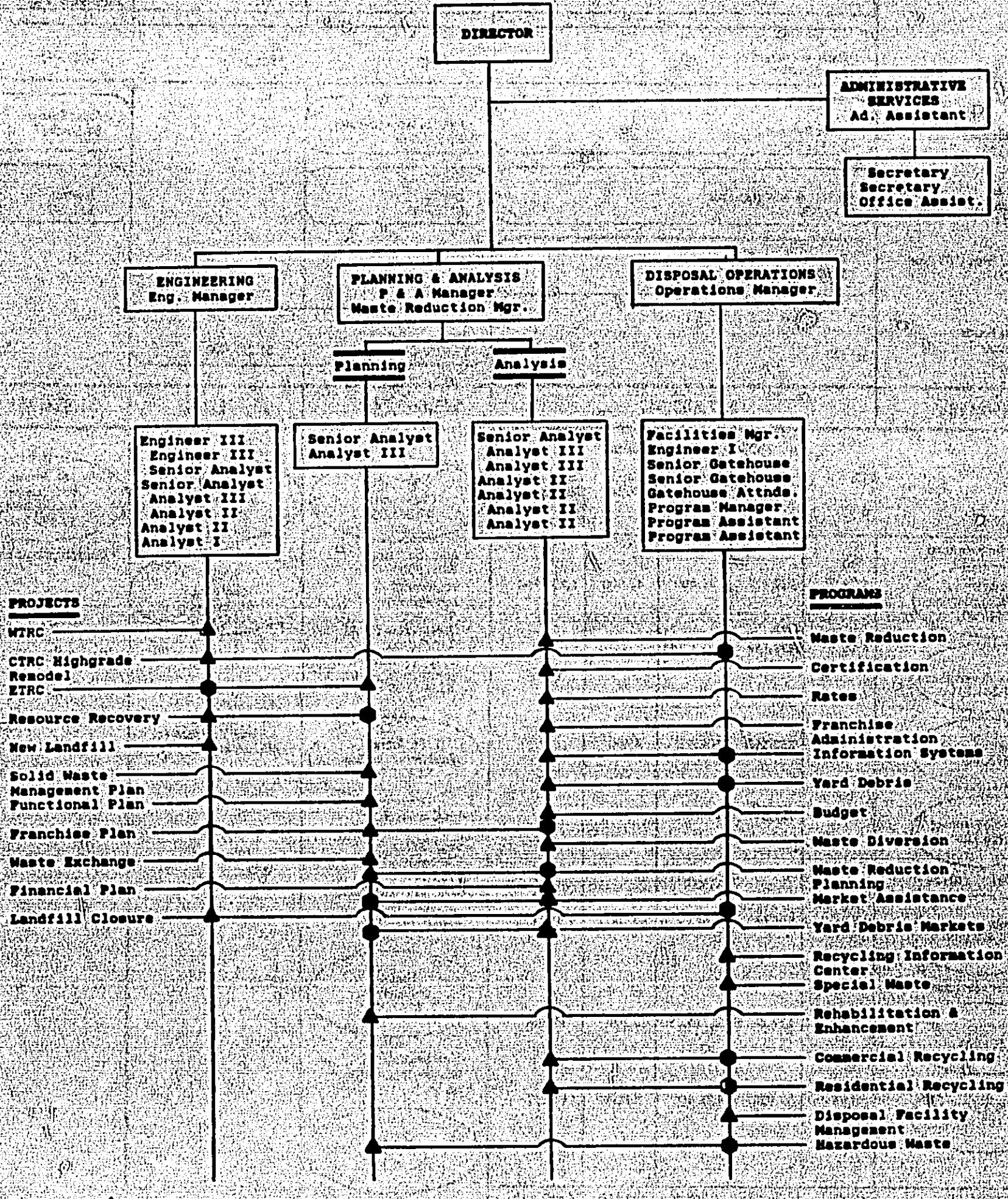
	Operating fund line items					WTRC Construction \$7,675,000	DEQ Bond payments \$916,261	St. Johns post closure sinking fund \$1,876,761
	FTE	Personal services	Materials & services	Capital Outlay	Transfers Contingency Unappropriated Balance			
<b>User fee programs</b>								
Management & administration 1,587,991	5.78	232,627	78,400	40,000	1,236,964	• Additional land \$400,000 • Engineering & management \$245,000 • Construction FY 88 \$1,966,000 • Unappropriated balance, construction FY 89 \$5,064,000	• Construction interest \$555,000 • Unappropriated balance-debt reserve \$670,000	• Unappropriated balance
Facility development 1,344,814	6.98	276,559	1,006,255	2,000				
Waste reduction 376,965	8.57	262,560	109,805	4,600				
Systems planning 226,191	3.12	121,516	104,675					
<b>Disposal operations</b>								
St. Johns Landfill 10,472,890	11.36	306,088	7,563,180	69,000	2,534,622	• Final cover & improvements \$928,000 • Contingency \$95,000 • Unappropriated balance for future years \$1,808,749		
<b>Transfer operations</b>								
CTRC 3,617,119	5.79	152,281	2,715,290	18,800	730,748	• Facility development \$267,000 • New landfill engineering, analysis & design		
WTRC 182,377	0.93	57,920	28,400	5,000	111,857	• Capital reserve \$290,000		
<b>17,808,347</b>	<b>42.53</b>	<b>1,389,551</b>	<b>11,666,005</b>	<b>139,400</b>	<b>4,613,391</b>	• Contingency for future facility repair & pre-development \$250,000 • Unappropriated balance \$40,000		

Summary of transfers, contingency and unappropriated balance

1,307,372	General fund
74,923	Building fund
364,874	Insurance fund (300,000 for EIL)
277,216	Rehab/Enhancement Fund (50¢/ton)
7,500	IRC fund
1,183,086	Contingency (8%)
1,398,416	Unappropriated balance (1,355,000 operating reserve)
<b>4,613,391</b>	



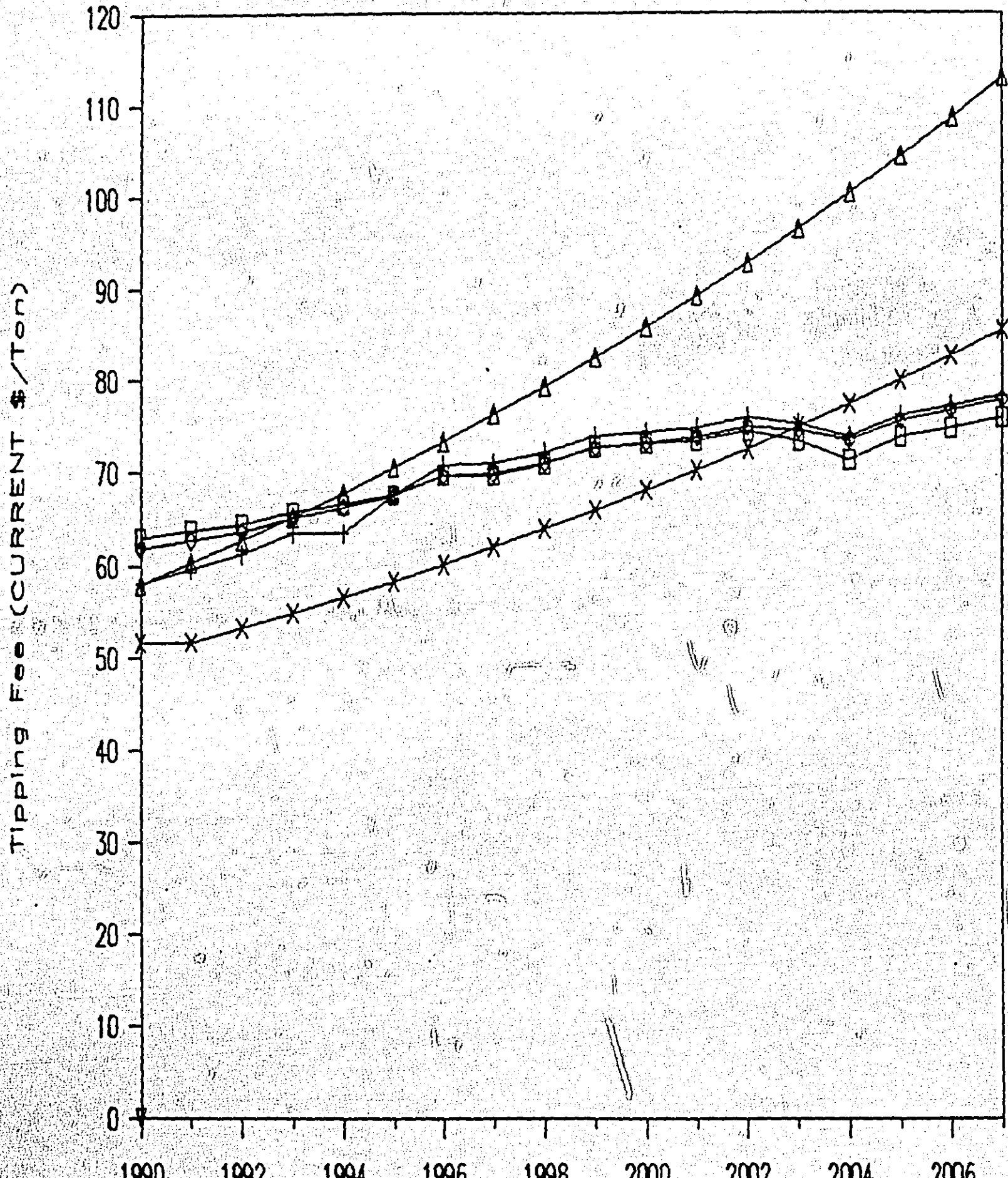
**SOLID WASTE DEPARTMENT ORGANIZATION AND WORK ASSIGNMENTS**



Note:   
 ▲ Denotes lead department.   
 ● Denotes support department.

# Portland Metro Project

## Tipping Fee Comparison

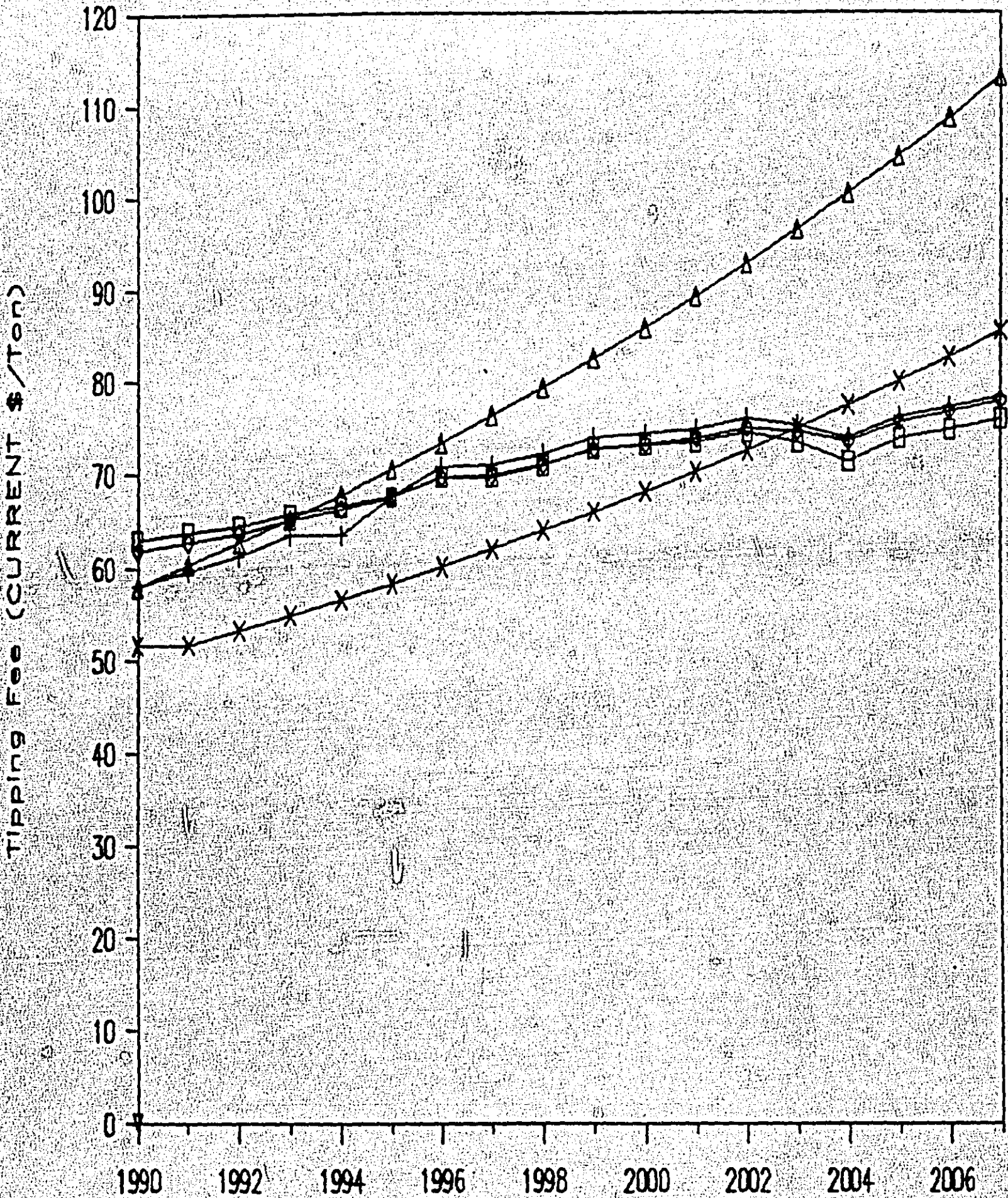


Year (Base Case)

□ CE    + F/SEI    ◊ SO    Δ R/B-M    X RET

# Portland Metro Project

## Tipping Fee Comparison



□ CE    + F/SEI    ◇ SO    Δ R/B-M    X RET